



MONDOLUX MO12 Corelli Maxi Instruction Manual

[Home](#) » [MONDOLUX](#) » MONDOLUX MO12 Corelli Maxi Instruction Manual 

MONDOLUX™

OUTDOOR DOWNLIGHT
Product code MO12
MO12 Corelli Maxi
Instruction Manual

Contents

- [1 MO12 Corelli Maxi](#)
- [2 Care & Refinishing](#)
- [3 Optional Accessories](#)
- [4 Installation Steps](#)
- [5 Documents / Resources](#)
 - [5.1 References](#)
- [6 Related Posts](#)

MO12 Corelli Maxi



Notes

- This fitting requires 220-240V AC/50Hz power input to the driver. Installation should be done by qualified electrician.
- Electrical Wiring and installation should always comply as per the local standards.
- Do not open or interchange any parts of this fitting or the warranty is void.
- The fitting may be hot to touch after continuous use.
- Do not install the fitting near heat source.

- Do not install any inductive loads such as exhaust fans or pond pumps etc. within the same lighting circuit of this fitting. Issues caused by such wirings are not covered under our warranty policy.
- Wherever applicable – waterproof cable joints like junction boxes or heavy walled adhesive lined heat shrinks must be used, or warranty is void.
- If you have any questions about the installation of this product, please contact Mondolux at 1300 601 931.

Care & Refinishing

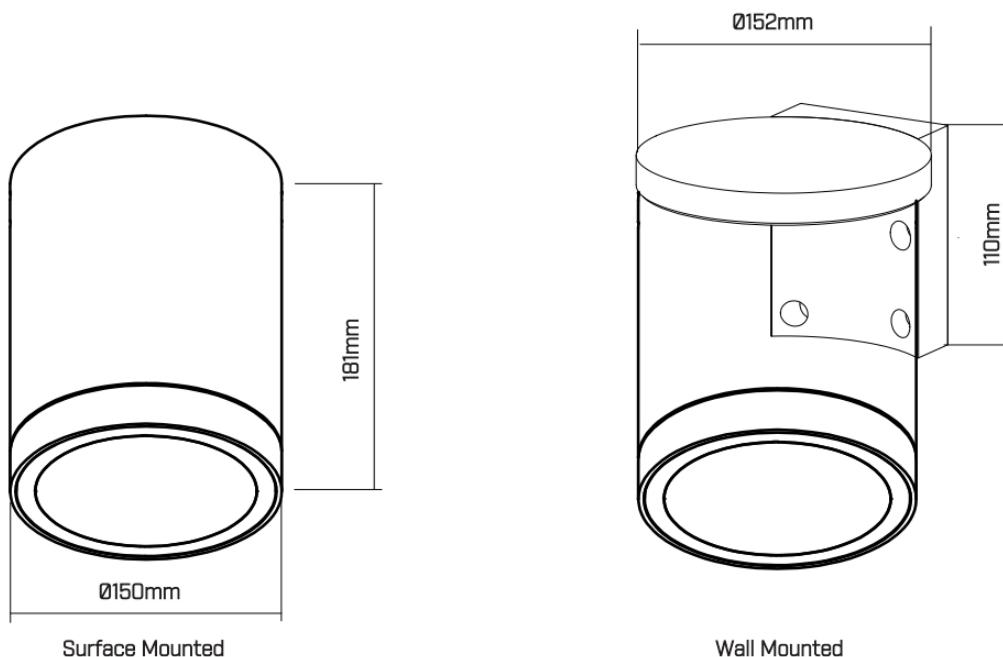
Mondolux strongly recommends following cleaning procedures to maintain proper finish of the product.

- Do not use bleach or concentrated solvents under any circumstances.
- For Black finish: Wipe gently with a soft damp cloth or chamois. Do not use any abrasive compounds.

Optional Accessories

Corelli Mini & Maxi have following optional accessories to suit different lighting and control method requirements.

- Honeycomb Louvre in black finish is available to reduce any further glare.
- Single wall bracket to make it a wall mount fitting. * (as shown below)
- Corelli Maxi comes with standard ON/OFF control. For any other optional control method please contact Mondolux.

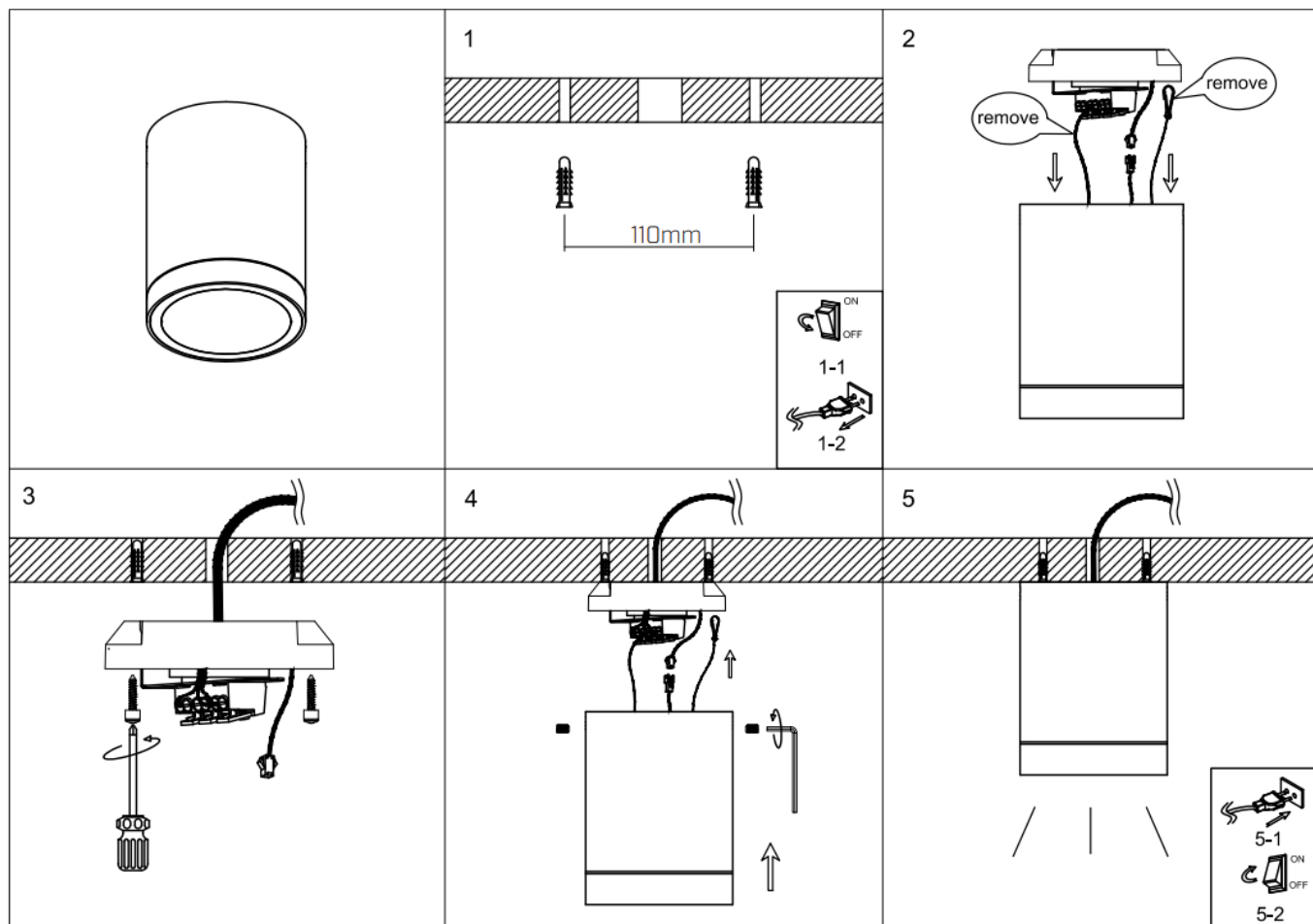


* For specific accessory order details and installation guidelines, please contact Mondolux at

Installation Steps

1. Ensure the mains power is turned off.
2. Drill required number of holes in the ceiling and fix the mounting plate using the provided screws. See picture 1.
3. Pass the power supply cable through the gasket of the mounting plate and secure it. See picture 2.

4. Connect the wires on the supply side to the respective terminals of the driver using quick connectors. See picture 3.
5. Fit and screw to fix the fitting to the mounting plate. See picture 4.
6. Installation is complete. Turn the mains on. See picture 5.



MONDOLUX™
mondolux.com.au

Documents / Resources

	<p>MONDOLUX MO12 Corelli Maxi [pdf] Instruction Manual MO12 Corelli Maxi, MO12, Corelli Maxi, Maxi</p>
--	--

References

- **ML** [Mondolux | Innovative Commercial Lighting Supplier Australia](http://mondolux.com.au)