



## **H2E Headset Helmet Intercom**



# **MOMAN H2E Headset Helmet Intercom User Manual**

[Home](#) » [MOMAN](#) » MOMAN H2E Headset Helmet Intercom User Manual 

### **Contents**

- [1 MOMAN H2E Headset Helmet Intercom](#)
- [2 Packing List](#)
- [3 Product Introduction](#)
- [4 Operation](#)
- [5 Installation](#)
- [6 Charging](#)
- [7 Specifications](#)
- [8 Documents / Resources](#)
  - [8.1 References](#)

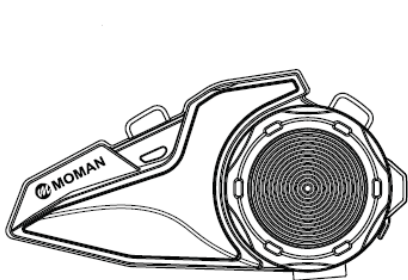


**MOMAN H2E Headset Helmet Intercom**

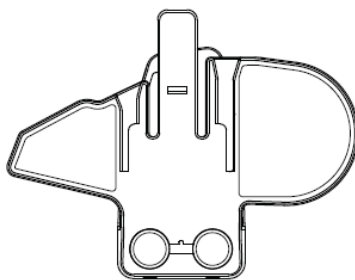


## Packing List

### 2-Rider Kit



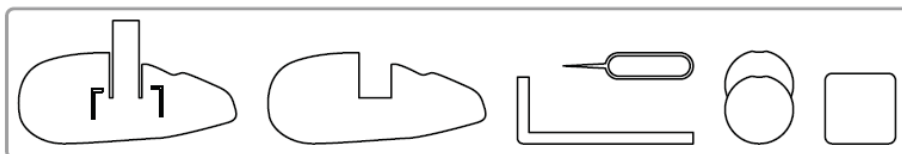
Main Unit x2



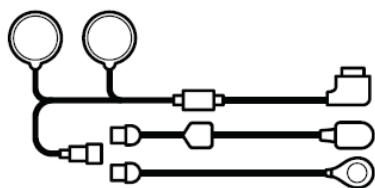
Back Clip x2



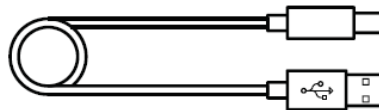
Pattern Shells Kit x2



Velcro Accessories Kit x2



Replaceable Microphone  
Speakers x2

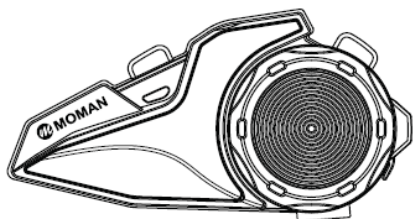


Charging Cable x2

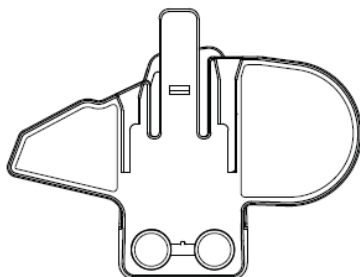


Manual x1

### 1-Rider Kit



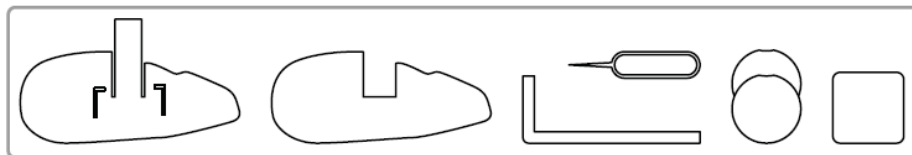
Main Unit x1



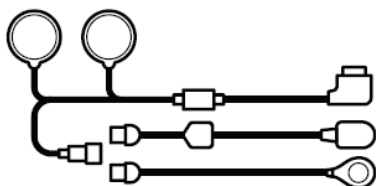
Back Clip x1



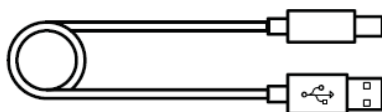
Pattern Shells Kit x1



Velcro Accessories Kit x1



Replaceable Microphone  
Speakers x1

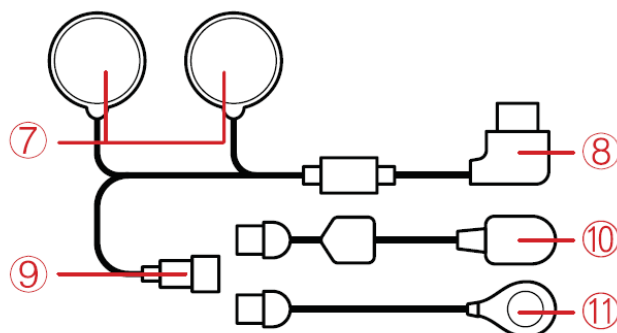
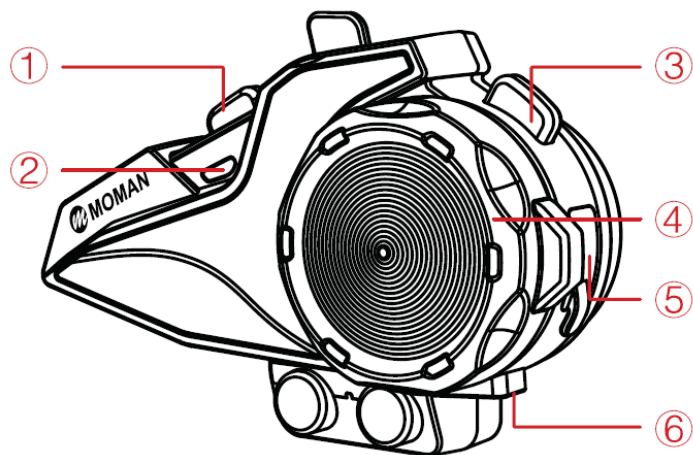


Charging Cable x1



Manual x1

## Product Introduction

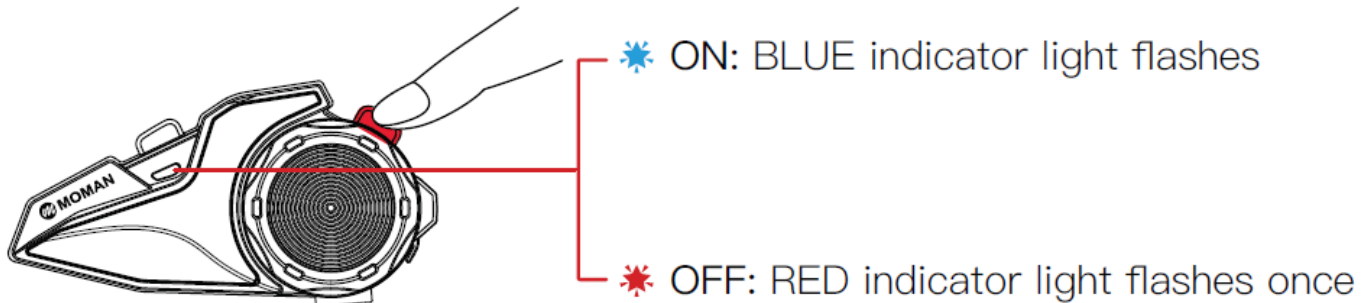


1. Intercom Key
2. Indicator Light
3. On/Off Key
  - Music Share Key
4. Function Key Knob
5. Charging Interface
6. Headset Interface
7. Speakers
8. Headset Plug
9. Microphone Connector
10. Replaceable Hard Mic
11. Replaceable Soft Mic

## Operation

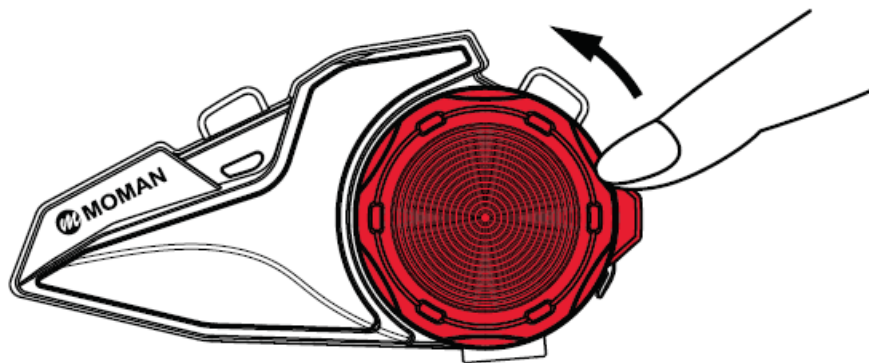
### Power On/Off

- **ON:** Long press and hold On/Off Key for 3 seconds.
- **OFF:** Long press and hold On/Off Key for 3 seconds.

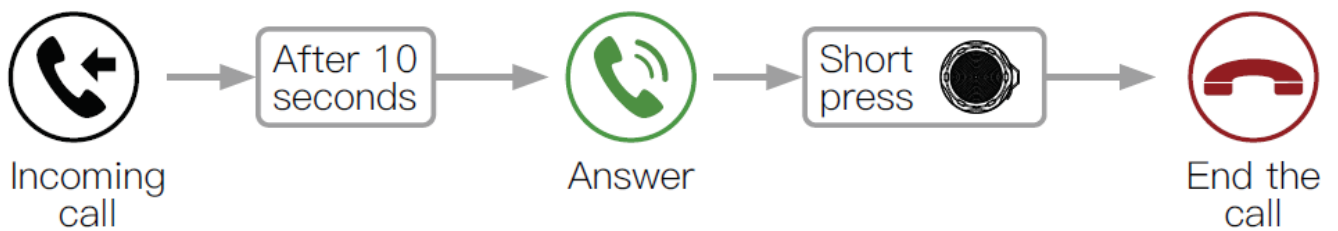


### Phone Control

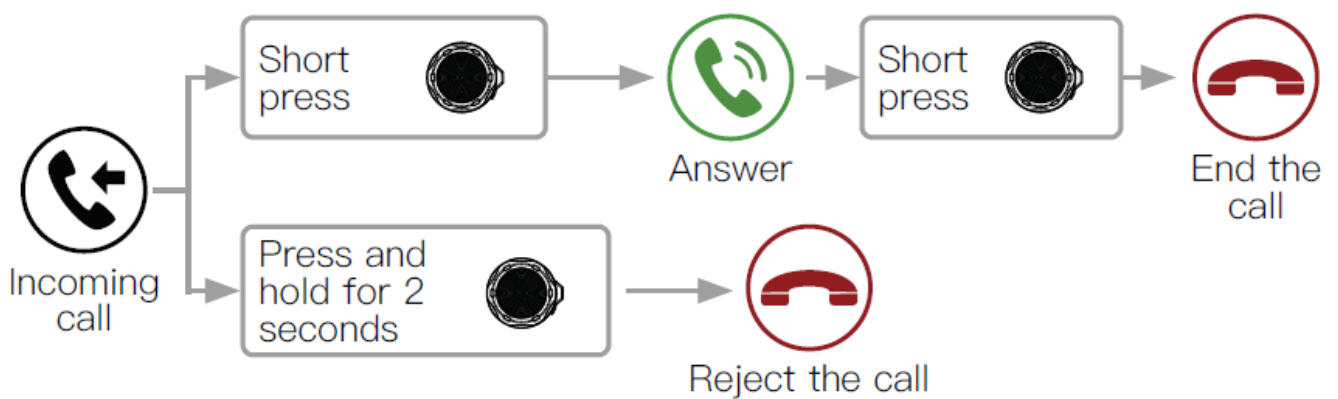
- Quickly turn the knob counterclockwise twice to switch between Automatic Answering Mode and Manual Answering Mode. (Without Bluetooth Connection)



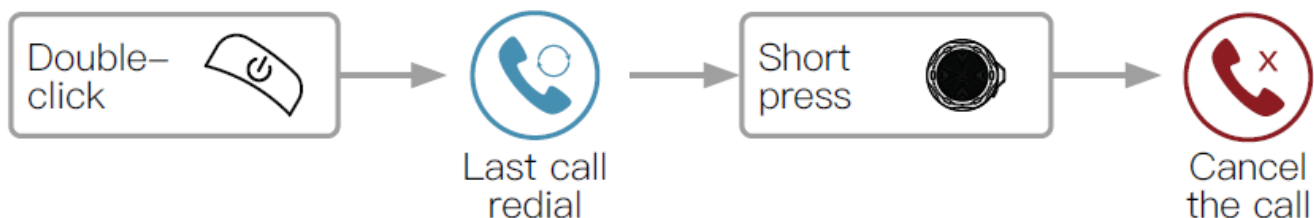
#### 1. Automatic Answering Mode



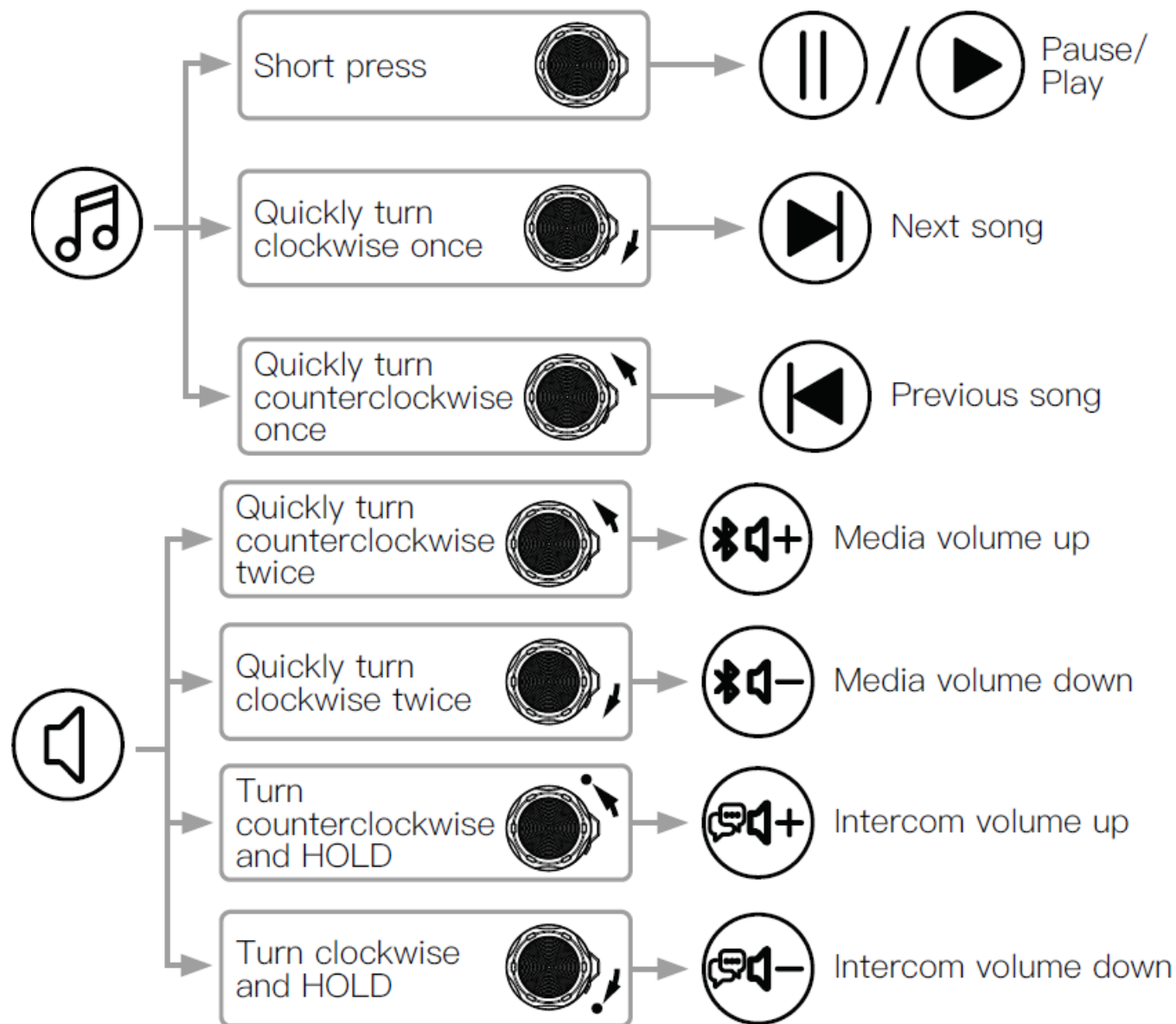
#### 2. Manual Answering Mode



### 3. Redial the last call



### Music Control



### Note:

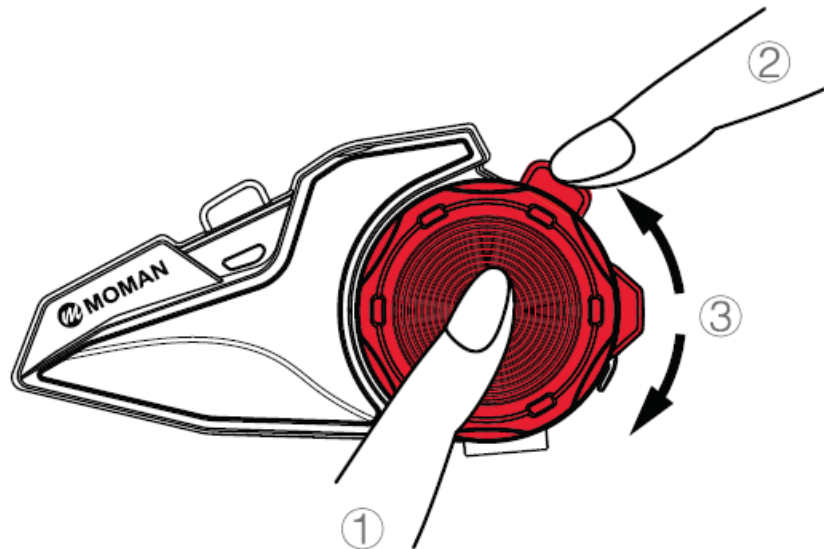
- There is a voice prompt “Dong Dong” for the highest and lowest volume.

### FM Radio

1. **ON/OFF:** Double Click Function Key.
2. **Search Channels:** Short press On/Off Key to start or stop searching.
  - Up to 10 channels will be saved automatically after searching.



3. **Switch Channels:** Quickly turn the knob.

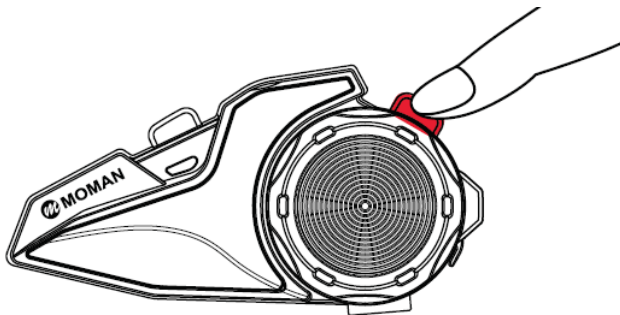


#### Notes:

- If the signal is weak indoor, you could try to turn on the FM radio near window or in the open area.
- When FM radio is turned on and there is a phone calling, the machine will cut off FM radio automatically and connect to the mobile phone. It gets back to the FM radio when the call ends.

#### Language Switch

- Without Bluetooth connection, double click ON/OFF Key.



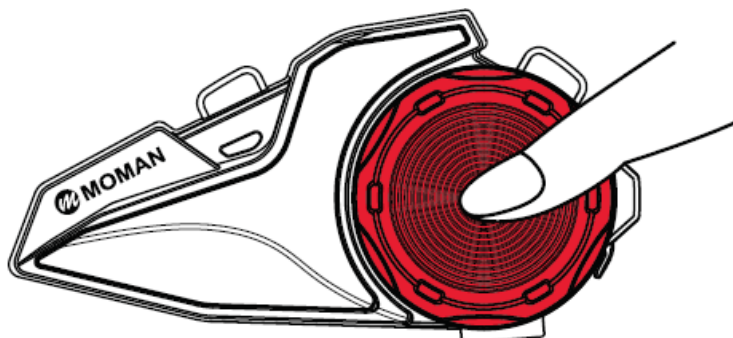
English



Italian

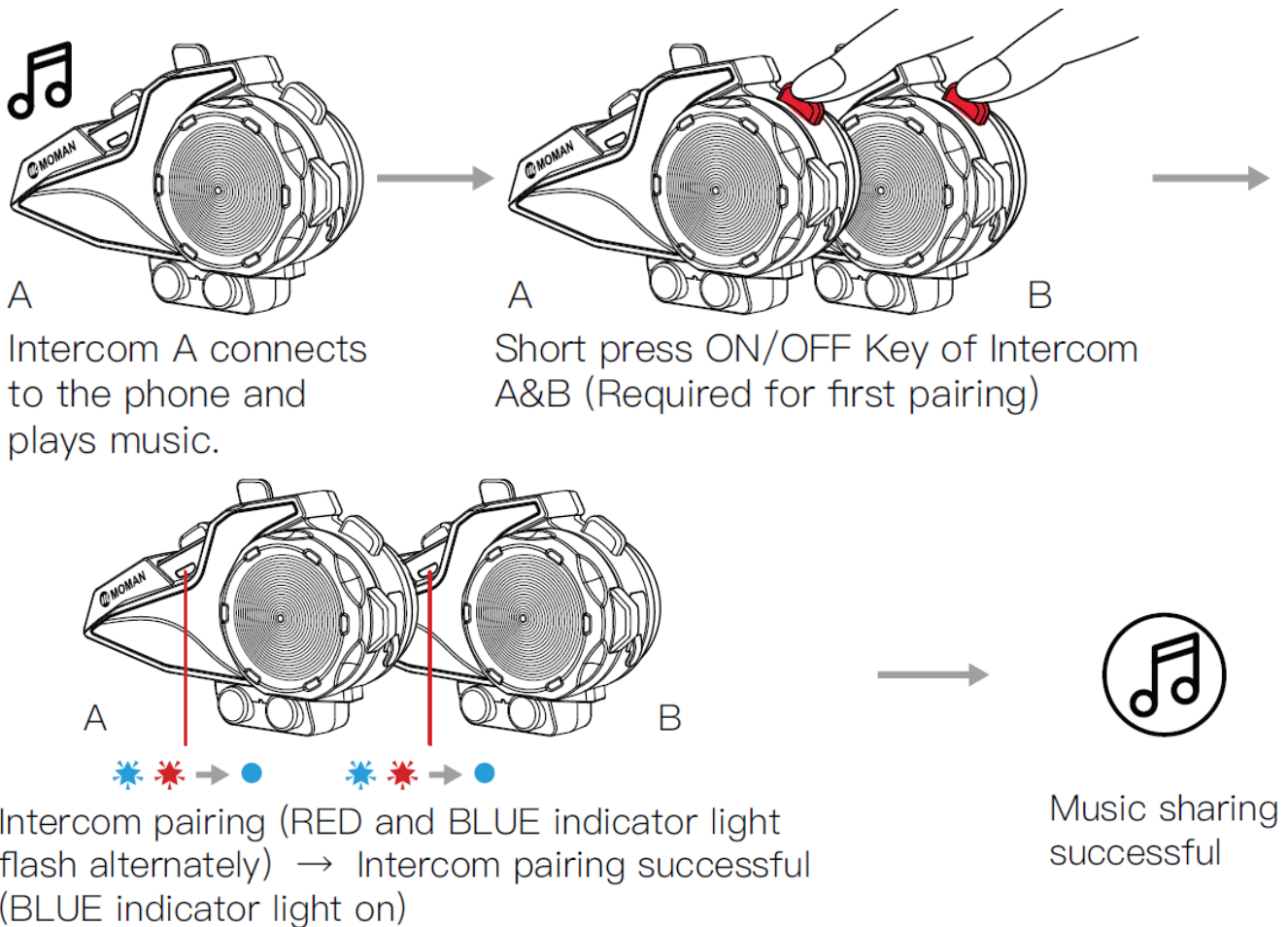
#### Voice Assistant

- With Bluetooth connection, long press Function Key for 2 seconds to wake up or exit the voice assistant.

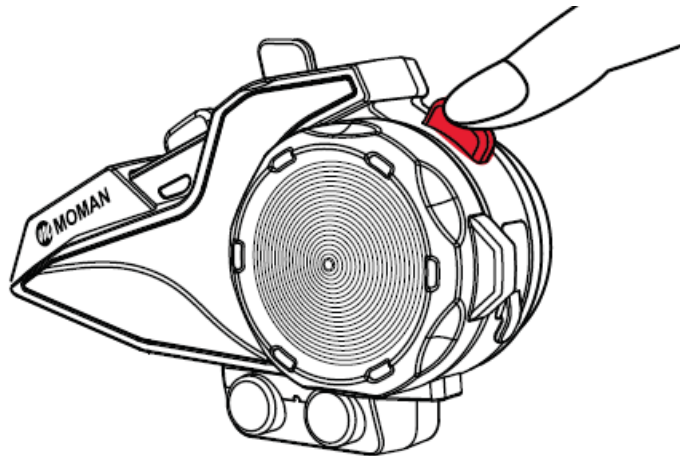


## Music Share

### 1. ON:



### 2. Off: Short press ON/OFF Key



### Note:

1. Music can only shared by one of the devices.
2. During intercom communication, press the ON/OFF Key for music sharing, if one of the devices is playing music.

## Pairing Operation

### With mobile phone:

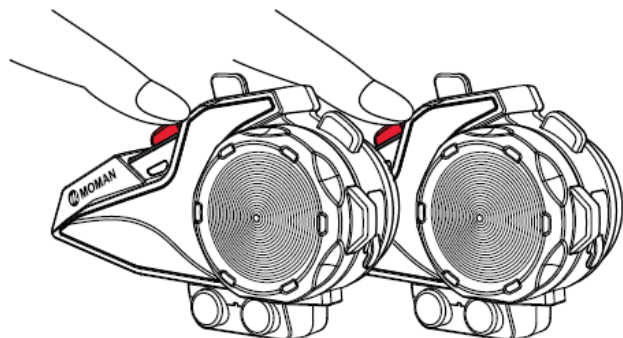
1. After powering on, BLUE indicator light flashes to enter Bluetooth Mode.
2. Turn on the bluetooth function of smartphone, search "MOMAN HE" to connect. Voice prompt "Bluetooth connected"

Voice prompt:  
"Bluetooth connected"

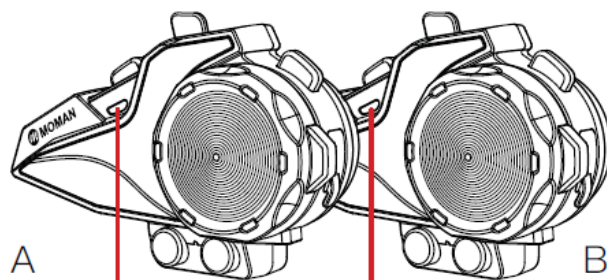


3. After successful pairing, the device connects automatically. No need to repeat pairing.

### Two Intercoms Pairing:



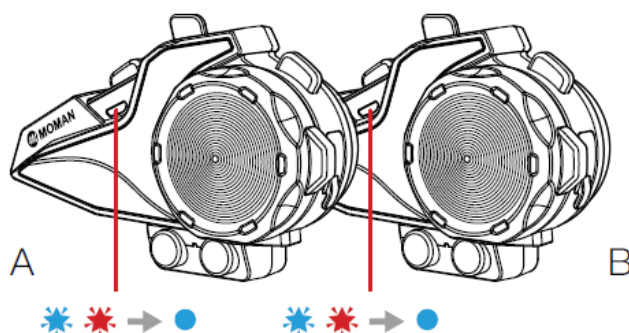
Short press Intercom Key



Enter Intercom Pairing Mode: RED and BLUE indicator light flash alternately



Voice prompt: "Handy Talkie Connected"



Pairing successful with BLUE light on

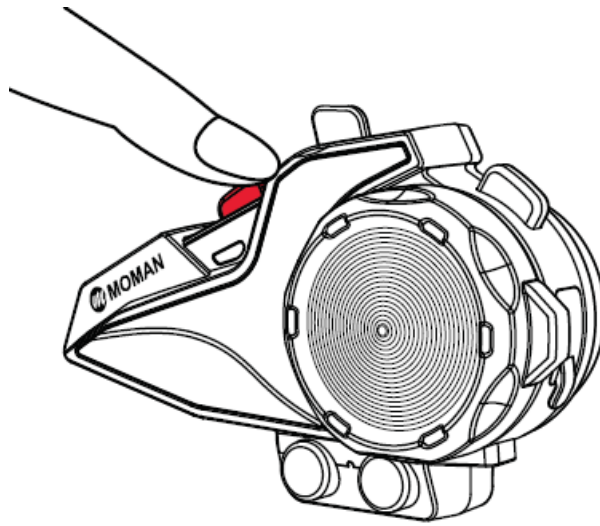
### Notes:

1. After successful pairing, the intercoms pair automatically. No need to repeat pairing.
2. After powering on, short press Intercom Key to repair automatically.
3. Without connecting Bluetooth and intercom, long press Function Key and Intercom Key simultaneously for 8S. After the indicator light flashes purple, all pairing information can be cleared.

### Reconnection and Disconnection

1. **Reconnection:** Short press Intercom Key
2. **Disconnect:** Double click Intercom Key
3. **Exit Intercom:** Long press Intercom Key
4. **Notes:** Within five minutes of disconnection, the intercoms pair automatically; More than five minutes, the intercoms need to be repaired.





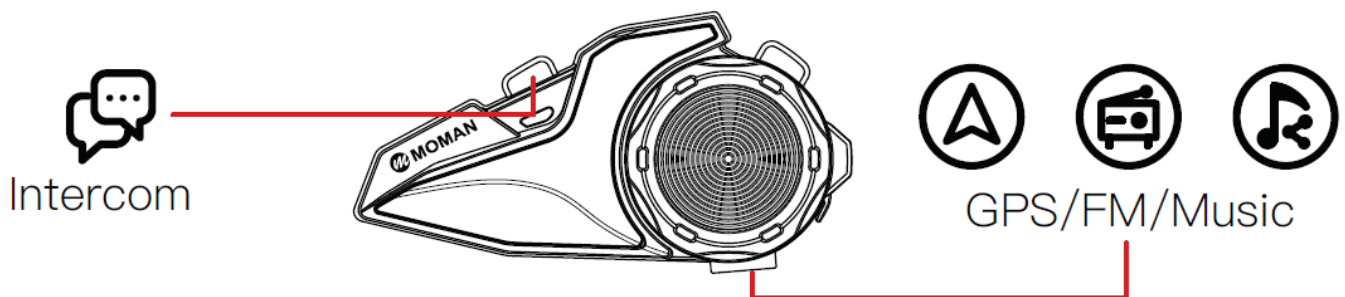
### Intercom Mute

- During intercom communication, short press Intercom Key to enter or exit mute.

### Audio Multitasking

- Dual chips support intercom and Bluetooth to work independently at the same time.

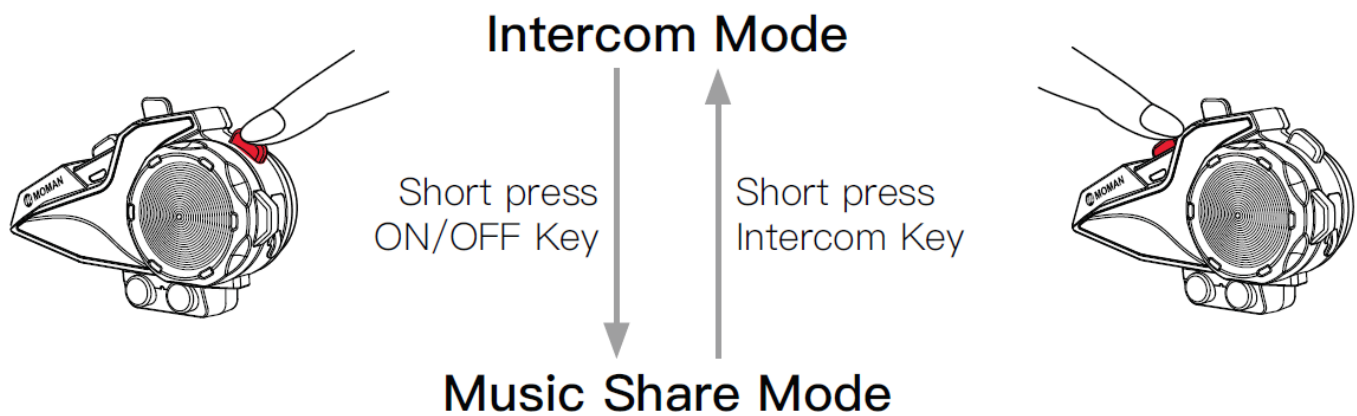
Intercom and Bluetooth both connected



### Function Priority

- **Level 1:** Phone Call
- **Level 2:** Intercom/Music/FM Radio/GPS

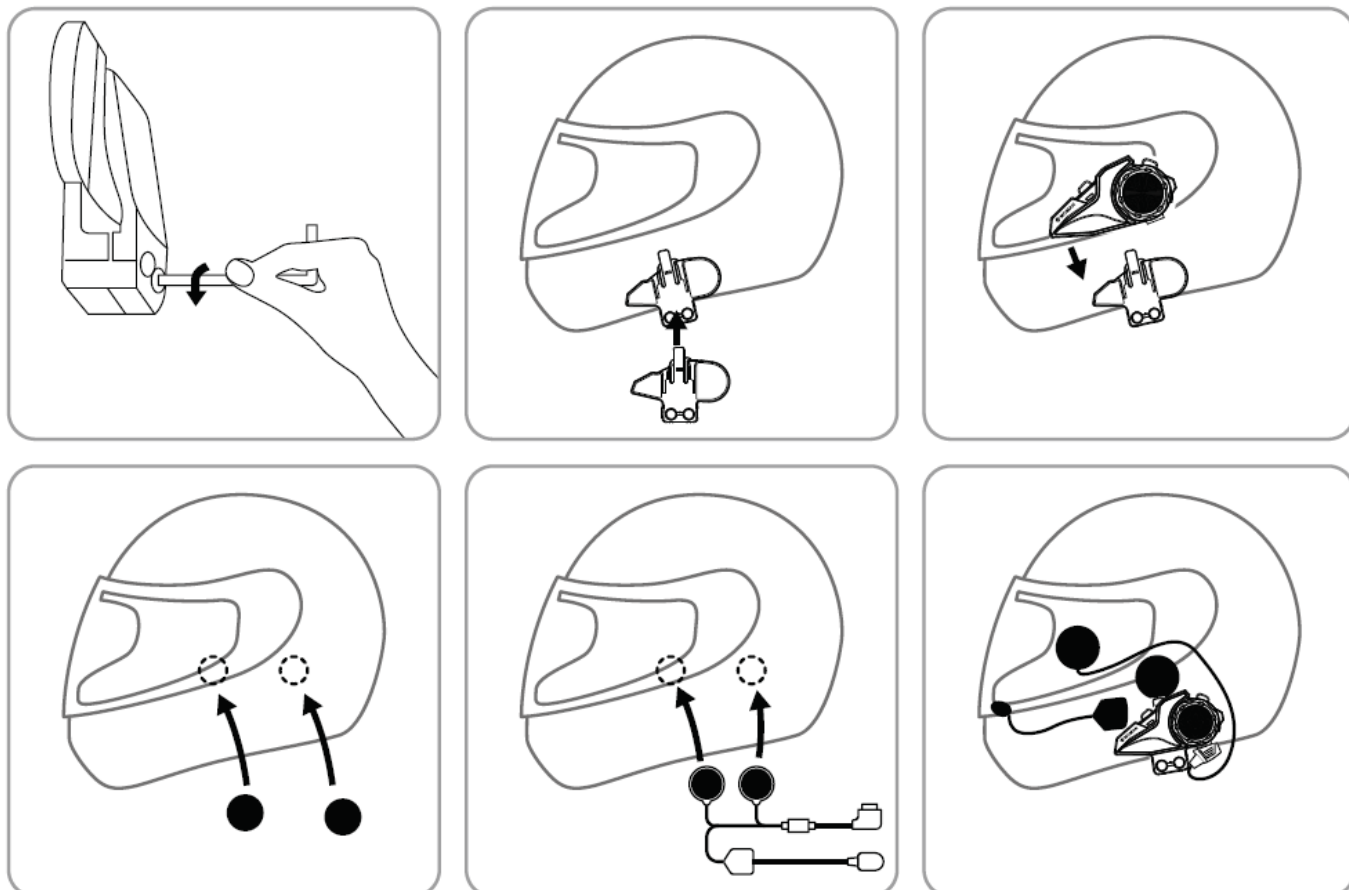
### Mode Switch



## Installation

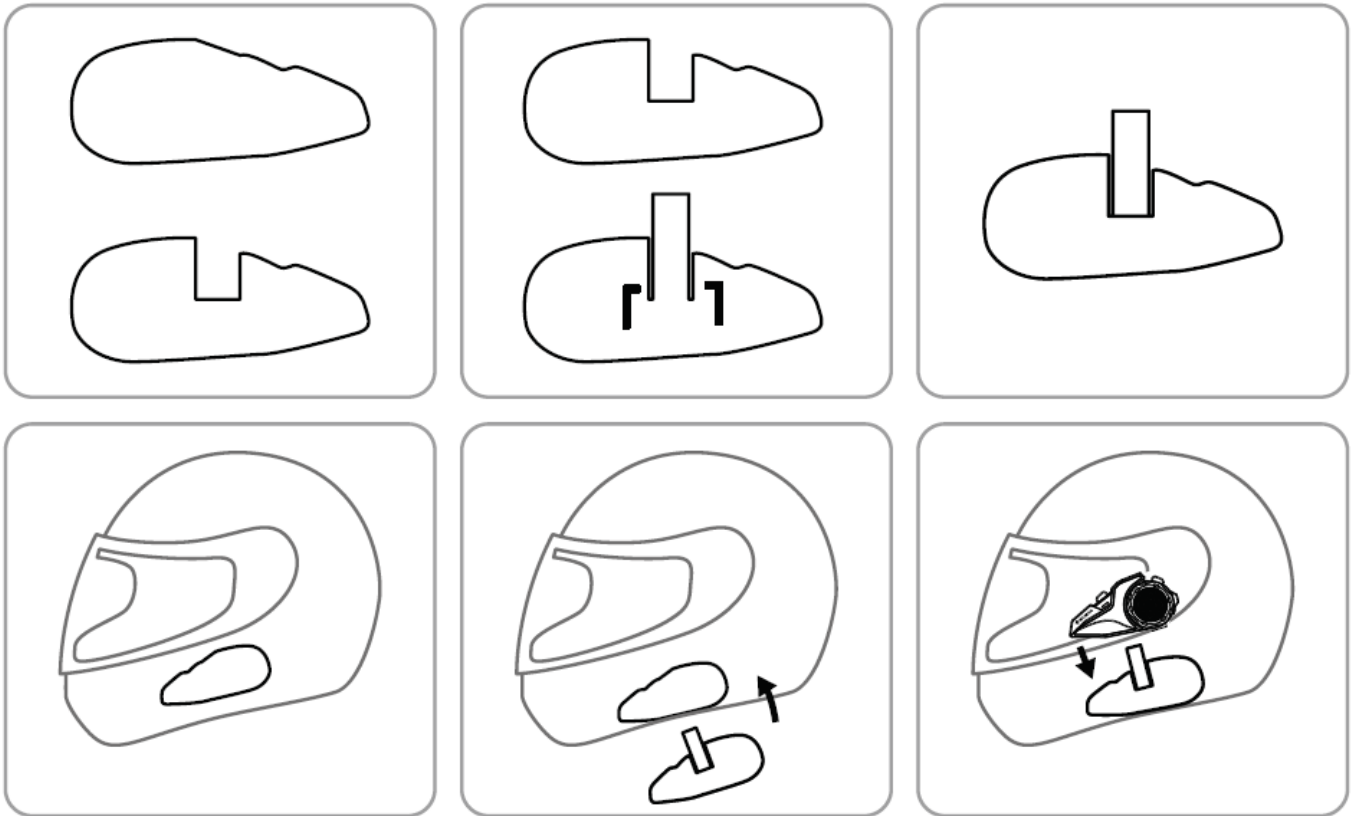
### Method 1: Install with Back Clip

1. Use the screwdriver to loosen the screws of the back clip so that it can open to a proper extent.
2. Open the helmet liner, insert the clip into the right position on the left side of the helmet and tighten the screw.
3. Slide the intercom into the back clip slot to make sure it lacks firmly.
  - Open the helmet liner (ear position), clean the EPS surface of the helmet, and stick a piece of horn Velcro on the left and right sides of the helmet.
4. Stick the speaker on the fixed Velcro surface and the speaker with a shortline should be installed close to the machine. Fix the microphone and arrange the helmet lining and cable.
5. Insert the headset into the jack of the intercom and tie up the headset cable.



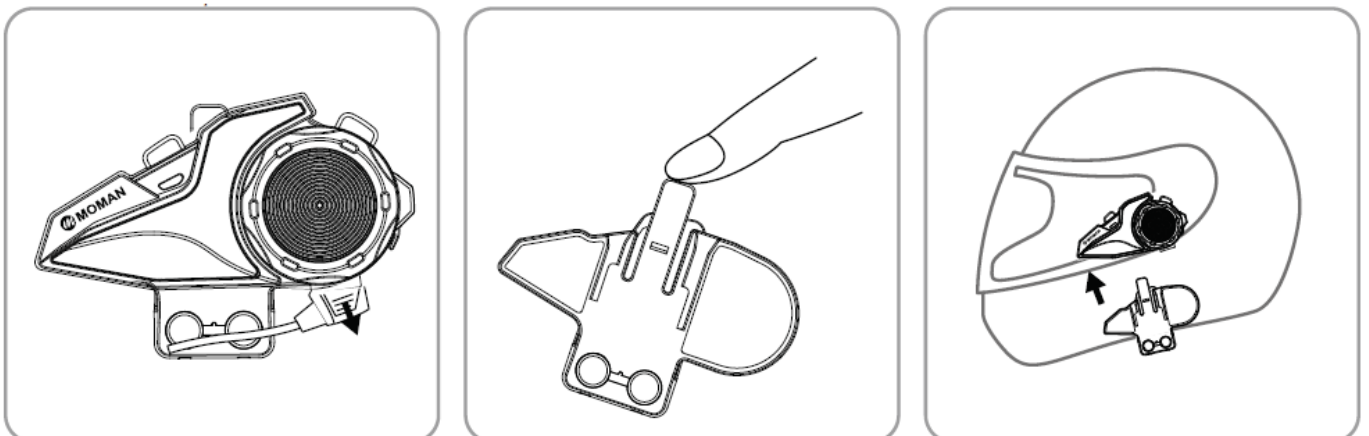
### Method 2: Install with Velcro Clip

- Separate the hook and loop fasteners. First stick the hook onto the Velcro clip; choose the right Installation position on the helmet and stick the loop to the position. Install the intercom onto the Velcro clip.
- The installation of speakers can refer to the description above.

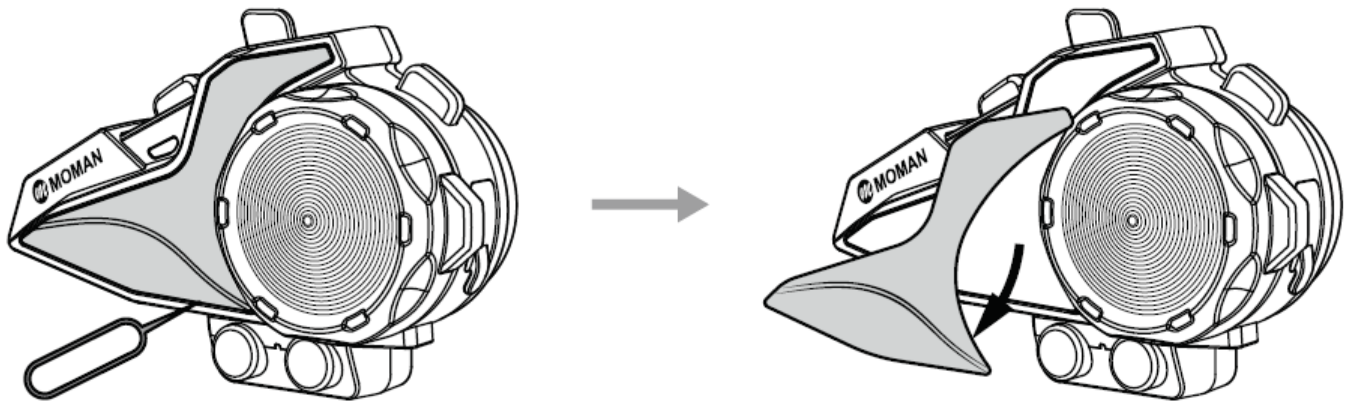


## Removal

First unplug the headset, then press the fixed buckle in the middle of the back clip with one finger (push towards the side of the helmet), so that the back clip hook is detached from the intercom, and push the intercom upwards to let it slide out of the back clip smoothly to complete the disassembly.



## Replacement of shells



## Charging

1. Before using the Bluetooth intercom, please use the attached charging cable to charge the intercom. The small type-C interface on the charging line is connected to the USB charging interface of the Bluetooth intercom, and the large USB connector on the charging cable is connected to the flowing charging interface for power supply:
  - USB interface of computer;
  - A mobile power supply with DC 5V output;
  - A USB power adapter with DC 5V output.
2. RED indicator light is on when charging.
  - RED indicator light is off when fully charged.
3. The intercom will automatically power off when charging. Long press ON/ OFF Key for 3 seconds to power on.

## Specifications



|                                 |               |
|---------------------------------|---------------|
| Transmission Range              | up to 1000m   |
| Connection Distance with Mobile | 20m           |
| Bluetooth Version               | 5.0 + 5.3     |
| Bluetooth Protocol              | A2DP, AVRCP   |
| Charging Port                   | Type-C        |
| Standby Time                    | 300H          |
| Working Time                    | 25H           |
| Battery                         | 800mAh        |
| Charging Time                   | 2H            |
| Charging Voltage                | 5V            |
| Speaker Diameter                | 40mm          |
| Frequency Range                 | 2402-2480MHz  |
| Temperature Range               | – 20°C ~ 50°C |

### Important Note

- If there is any problem, please scan the QR code to get operation video or after-sales support.



### Documents / Resources

|   |   |
|---|---|
| <br><br><small>Bluetooth Headset Helmet Intercom for Motorcycle</small> | <p><a href="#">MOMAN H2E Headset Helmet Intercom</a> [pdf] User Manual</p> <p>2AXWL-H2E, 2AXWLH2E, H2E Headset Helmet Intercom, H2E, Headset Helmet Intercom, Helmet Intercom, Intercom</p> |
|---|---|



## References

- [User Manual](#)

[Manuals+](#), [Privacy Policy](#)

This website is an independent publication and is neither affiliated with nor endorsed by any of the trademark owners. The "Bluetooth®" word mark and logos are registered trademarks owned by Bluetooth SIG, Inc. The "Wi-Fi®" word mark and logos are registered trademarks owned by the Wi-Fi Alliance. Any use of these marks on this website does not imply any affiliation with or endorsement.