



# MOLLET SES SIS Swivelling Lever With Limit Switch User Manual

[Home](#) » [MOLLET](#) » MOLLET SES SIS Swivelling Lever With Limit Switch User Manual 



**MOLOS SWING**  
**Swivelling lever with limit switch**  
**SES | SIS**  
**Operating instructions**

- Read and follow these safety instructions first and take notice of the operating instructions.

## Contents

- 1 Safety instructions
- 2 Specification
  - 2.1 Intended use
  - 2.2 Function
  - 2.3 Technical data
  - 2.4 Materials
  - 2.5 Dimensions
- 3 Installation
  - 3.1 Preparation
  - 3.2 Mechanical connections
  - 3.3 Electrical connection
- 4 Utilization
  - 4.1 Commissioning
  - 4.2 Inexpert handling
- 5 Maintenance and Servicing
  - 5.1 Maintenance
  - 5.2 Servicing
- 6 Storage
- 7 Disposal
- 8 Documents / Resources
- 9 Related Posts

## Safety instructions

1. The installation, initial operation and maintenance may be done by a qualified expert with electrical know-how only.
2. Comply with the local and statutory rules and regulations and/or the VDE 0100.
3. Before electrical connection, compare the supply voltage with the details at the data plate.  
The swivelling lever has to be constantly conductible connected to the electrically conductive, earthed tubing.  
– If the tubing is not electrically conductive the swivelling lever has to be earthed.

### Type SES ...

4. A fuse (with max. 4 A) has to be connected in series to the supply voltage.
5. Protect the signal contacts of the limit switch against voltage peaks when inductive loads are connected.

### Type SIS ...

6. A fuse (with max. 4 A) has to be connected in series to the supply voltage. –

## Specification

### Intended use

The swivelling lever with limit switch is for signaling that a hose coupling has been coupled at silos or tanks or coupling stations.

### Function

While coupling the counter coupling or hose coupling the lever is swivelling beside and the limit switch will be actuate.

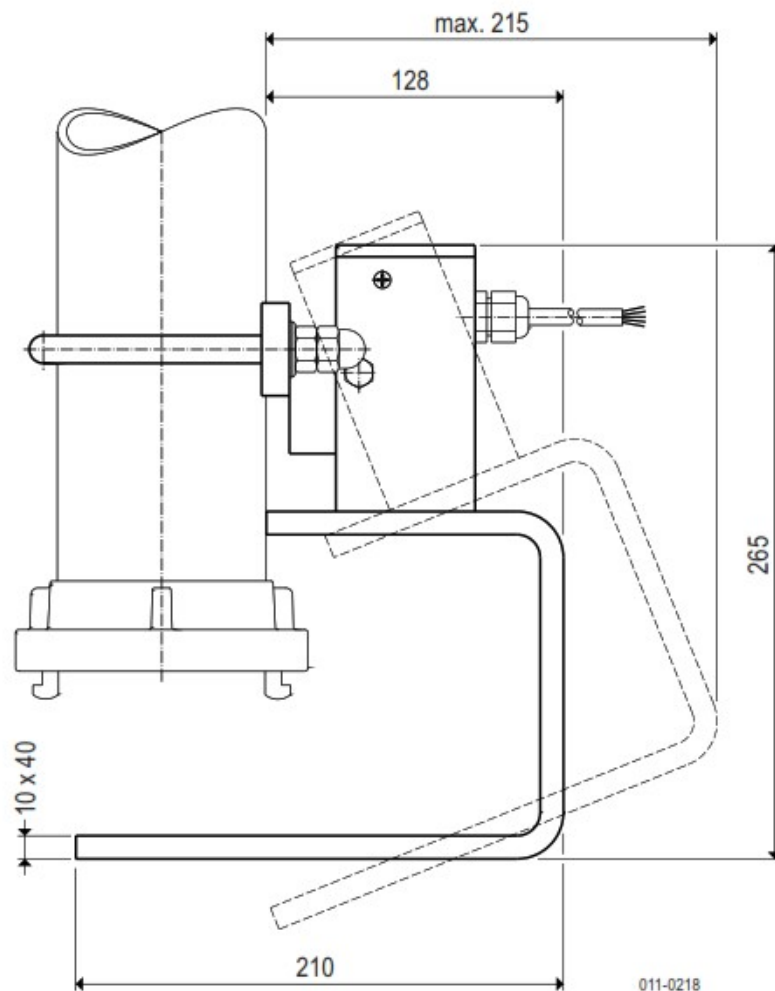
## Technical data

<b>Manufacturer</b>	<b>MOLLET</b> <b>Füllstandtechnik GmbH</b>
<b>Address</b>	Industriepark RIO 103 74706 Osterburken
<b>Name</b>	Swivelling lever with limit switch
<b>Type</b>	<b>SES ... / SIS ...</b>
<b>Weight</b>	3 kg
<b>Nominal size</b>	065 for tube Ø 76.1 080 for tube Ø 88.9 100 for tube Ø 108 ... 114.3 125 for tube Ø 133 ... 139.7 150 for tube Ø 159 ... 168.3
<b>Cabel length</b>	2 2 meter cabel 5 5 meter cabel 0 10 meter cabel

## Materials

Fixing plate Swivelling lever	Steel, galvanized Steel, galvanized
----------------------------------	--

## Dimensions



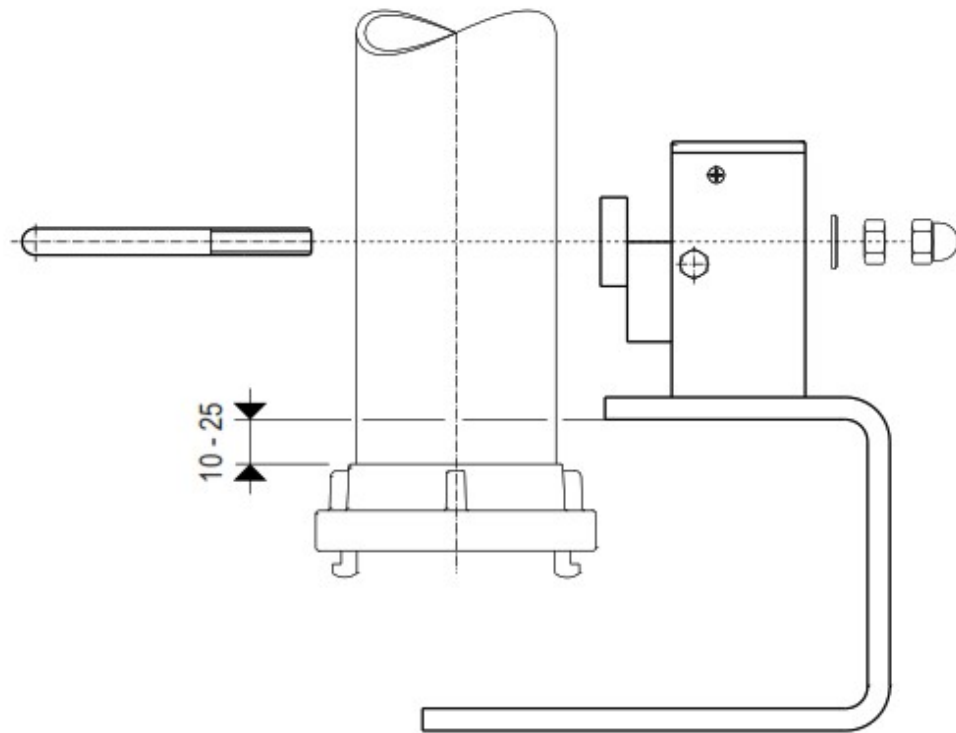
## Installation

### Preparation

Read and follow the safety instructions and the operating instructions, before handling with the device !

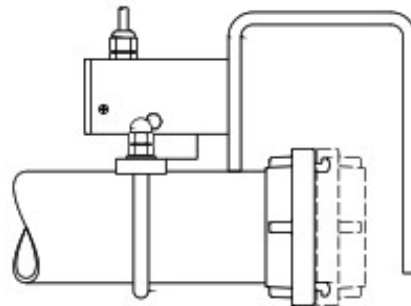
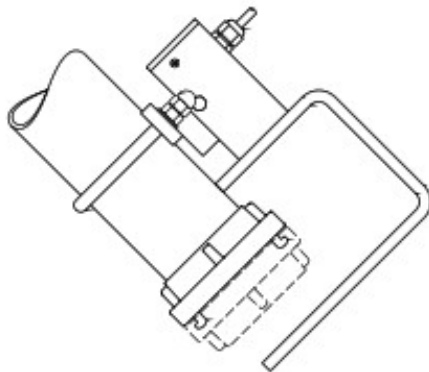
### Mechanical connections

- Place the pipe shackle over the tube and into the borings of the fixing plate.
- Set the nuts and washers at the pipe shackle.
- Screw them tightly on.
- Align the swivelling lever as shown in the drawing below with a distance of about 10 up to maximum 25 mm to the coupling.



011-0700

- Check whether the lever can be swivelled out without obstruction.
- In case of slanting or horizontal pipe always fasten to the upper side. The lever must fall into the final position shown in the drawing by virtue of its own weight.

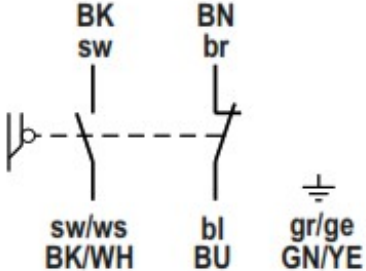


011-0701

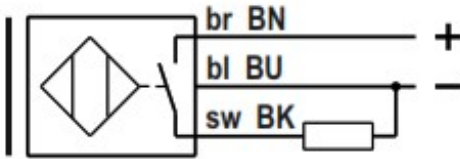
- Screw the both nuts so that the two threaded ends are about the same length.
- Now put the cap nuts on and screw them tightly. 210

#### Electrical connection

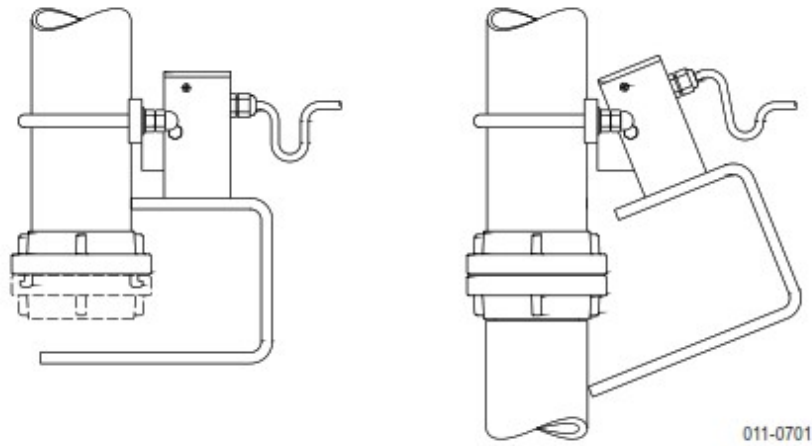
#### SES ... Limit switch with mechanical contact

Material	Switch Zn-Al alloy
Switching voltage	10 ... 250 V AC or DC
Switching function	1 NC + 1 NO
Capacity of the contact	max. 1.5 A / 250 V AC
Ambient temperature	-20 °C ... +60 °C
Type of protection	acc. DIN EN 60529 IP67/IP66
Connection diagram	

### SIS ... Inductive proximity switch

Material	Switch CuZn nickel plated active surface PA12
Switching voltage	10 ... 30 V DC
Switching function	PNP, Normally Open (NO)
Capacity of the contact	# 200 mA, constant current
Ambient temperature	-20 °C ... +60 °C
Type of protection	IP67/IP66 acc. DIN EN 60529
Connection diagram	

**Lay a loop at the swivelling lever to compensate the swivelling movement.**



## Utilization

### Commissioning

Put the swivelling lever into operation only, if the installation and the electrical connection have been done correctly.

### Normal operation

- Use the swivelling lever in its intended application only.
- Comply with the specifications on the data plate.

### Inexpert handling

- Ignoring the safety instructions and the operating instructions.
- Not intended use.
- Mounting of spare parts which are no original parts.
- Violation against applicable law and standards.

## Maintenance and Servicing

### Maintenance

Inspect the swivelling lever about cleanness and smooth engagement in regular intervals. Define the intervals of the control depending on the ambient conditions and the frequency of use.

### Servicing

- Carry out repairs only when the swivelling lever is disconnected from the electrical supply before.
- Damaged parts have immediately replaced with similar.
- Until the complete restoration of the proper function the swivelling lever must not be used any more.
- Use original spare parts only.

### Storage

- Store the swivelling lever dry and dust-free.

## Disposal

- The swivelling lever can be recycled.
- The disposal applies to the valid environmental guidelines according to the location of the carrier and the local manufacturing conditions.

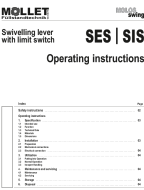
**SEIS-BA-04 08/22 © by MOLLET**

Operating instruction MOLLET D-74706 Osterburken

Tel. +49 6291 6440-0

Fax +49 6291 9846

## Documents / Resources

	<p><a href="#">MOLLET SES SIS Swivelling Lever With Limit Switch</a> [pdf] User Manual  SES SIS Swivelling Lever With Limit Switch, SES SIS, Swivelling Lever With Limit Switch, Lever With Limit Switch</p>
---	--