



MOKiN MODK1702 USB C Dual Display Mini Docking Station User Guide

[Home](#) » [MOKiN](#) » MOKiN MODK1702 USB C Dual Display Mini Docking Station User Guide 

Contents

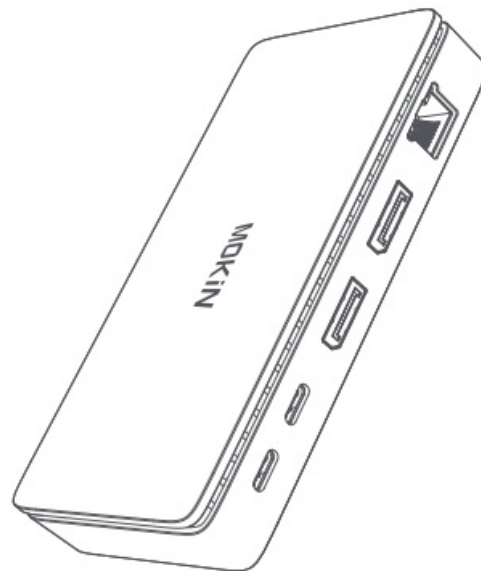
- [1 MOKiN MODK1702 USB C Dual Display Mini Docking Station](#)
- [2 Product information](#)
- [3 Product Specifications](#)
- [4 FAQ's](#)
- [5 Documents / Resources](#)
 - [5.1 References](#)
- [6 Related Posts](#)

MOKiN

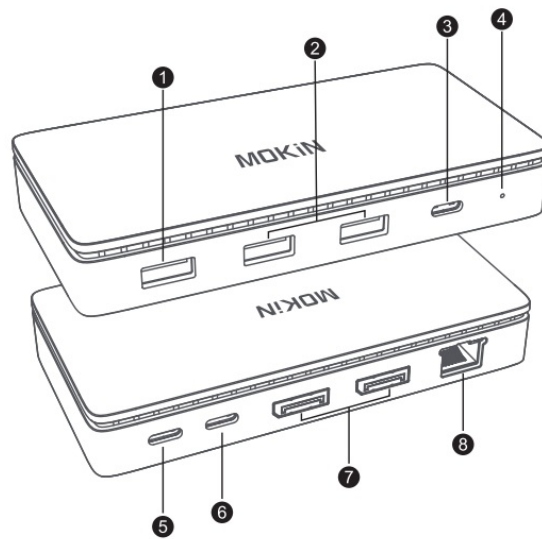
MOKiN MODK1702 USB C Dual Display Mini Docking Station



- **Model:** MODK1702
- **Product Name:** MOKiN USB C Dual-Display Mini Docking Station



Product information



1. USB A 2.0
2. USB A 3.0
3. USB C 3.0
4. LED
5. Host
6. USB C PD
7. Display Port
8. RJ45

Product Specifications

1. USB CPD port: Supports PD V3.0 max input 100W.
2. Display Ports support up to 4K@60Hz, and support High Dynamic Range (HDR) transport.
3. RJ45: Integrated 10/100/1000Mbps network interface.
4. USB2.0: 480Mbps. For keyboard, mouse, Gamepad, etc.
5. USB 3.0: Up to 5Gbps. Backward compatible with USB2.0, USB1.1

HDMI performance

1. Please confirm the dp alt mode version of your laptop's USB-C port using.
2. MacOS can only external one monitor, and the second external monitor just mirrors the first one. Windows without this limitation.

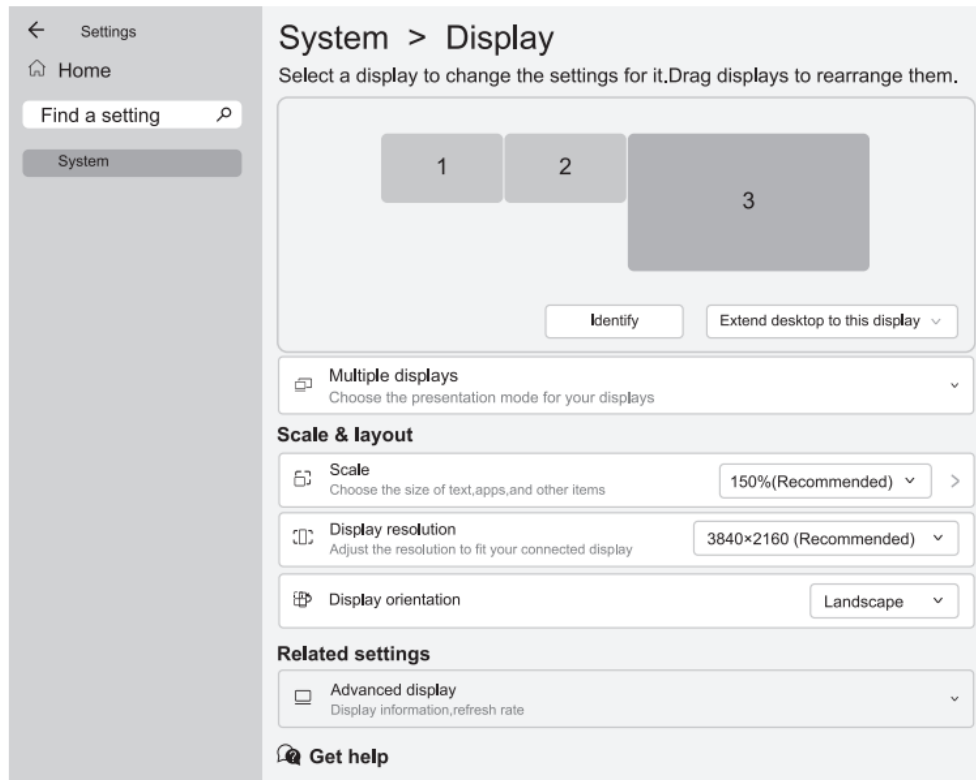
<In DPI.4>	Display Port	Display Port
Single Display	4K@60f-iz	4K@60f-i
Dual Displays	4K@60f-iz	4K@60f-iz

<In DPI.2>	Display Port	Display Port
Single Display	4K@30f-iz	4K@301-1
Dual Displays	2K@60f-iz	1080@60f-iz

How to set up the extended display?

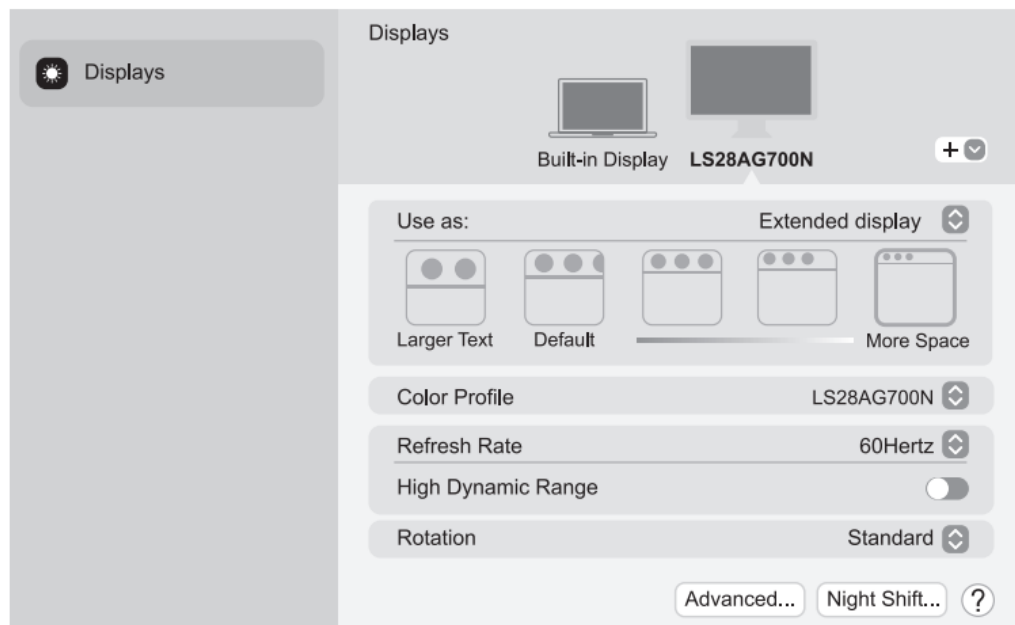
Windows (Windows)

- Start>Setting>System>Display



MacOS

- System Settings>Displays



The tips can't solve my problem, or I have more questions. If you encounter any problem during using our product, please contact us through amazon's after-sale service or our e-mail: support@mokintech.com we will help you solve any problem.

FAQ's

When connecting a wireless mouse or keyboard, it may not work properly?

Most wireless device like mouse, keyboard, and Bluetooth device work in the 2.4 Ghz wireless band. USB 3.0 Port has potential for interference that can affect the device' s performance. The most effective method is to add a USB 2.0 extension cable between the Docking and the receiver.


The display won't work, the resolution or refresh rate is abnormal.

Confirm that the USB-C port in your laptop supports DP alt mode. This information can be out in your laptop's specifications or consult your laptop's official customer service. There are some software conflicts, usually the driver problem of the GPU. Upgrading or roll back the driver of GPU version may solve it.

The device I connect didn't work, Or the laptop suddenly shuts down.

The connected devices consume too much power, please connect the PD charger.

Documents / Resources

	MOKiN MODK1702 USB C Dual Display Mini Docking Station [pdf] User Guide MODK1702 USB C Dual Display Mini Docking Station, MODK1702, USB C Dual Display Mini Docking Station, Display Mini Docking Station, Mini Docking Station, Docking Station
---	---

References

- [User Manual](#)