



# MODK1701 Mokin USB C Dual Display Mini Docking Station User Guide

[Home](#) » [MOKiN](#) » MODK1701 Mokin USB C Dual Display Mini Docking Station User Guide 

MODK1701 Mokin USB C Dual Display Mini  
Docking Station User Guide

# MOKiN

## User Guide



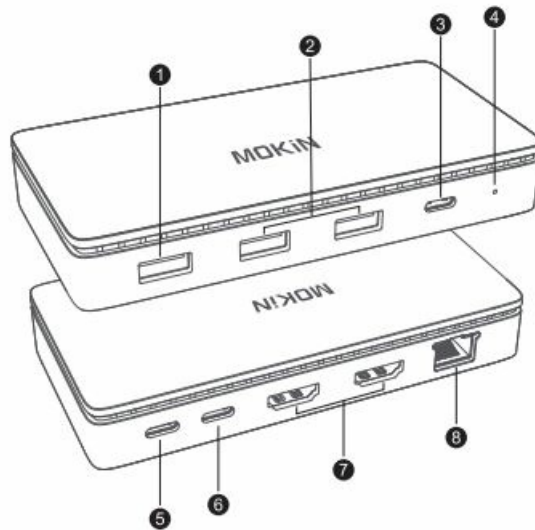
Model: MODK1701

MOKiN USB C Dual-Display  
Mini Docking Station

### Contents

- [1 Product information](#)
- [2 Product Specifications](#)
- [3 HDMI performance](#)
- [4 How to set up the extend display?](#)
- [5 FAQ](#)
- [6 Documents / Resources](#)
  - [6.1 References](#)

### Product information



1. USB A 2.0
2. USB A 3.0
3. USB C 3.0
4. LED
5. Host
6. USBC PD
7. HDMI
8. RJ45

## Product Specifications

1. USB CPD port: Supports PD V3.0 max input 100W.
2. HDMI supports up to 4K@60Hz, supports High Dynamic Range (HOR) transport.
3. RJ45: Integrated 10/100/1000Mbps network interface.
4. USB2.0: 480Mbps. For keyboard, mouse, Gamepad, etc.
5. USB3.0: Up to 5Gbps. Backward compatible with USB2.0, USB1.1

## HDMI performance

1. Please confirm the dp alt mode version of your laptop's USB-C port using.
2. MacOS can only external one monitor, and the second external monitor just mirrors the first one. Windows without this limitation.

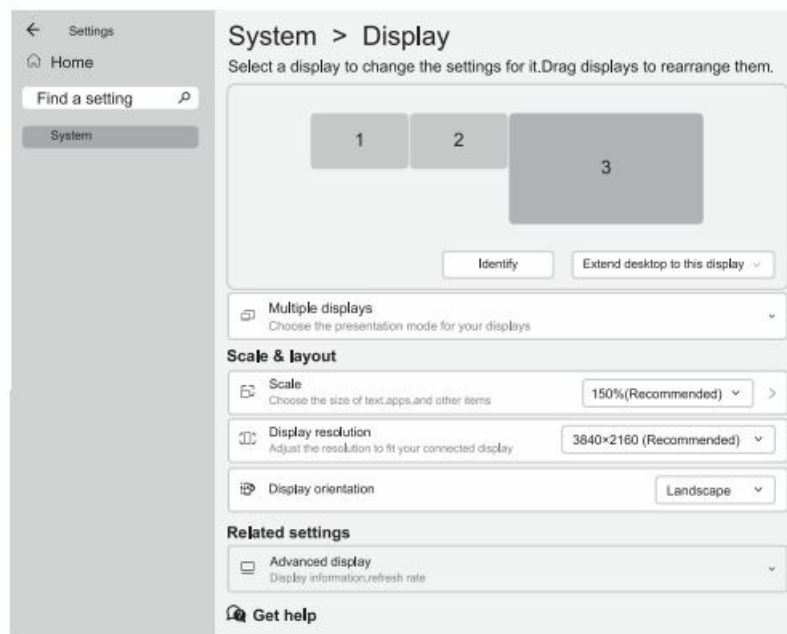
<In DP1.4>	HDMI	HDMI
Single Display	4K@60Hz	
		4K@60H
Dual Displays	4K@60Hz	4K@60Hz

<In DP1.2>	HDMI	HDMI
Single Display	4K@30Hz	
		4K@30H
Dual Displays	2K@60Hz	1080@60Hz

## How to set up the extend display?

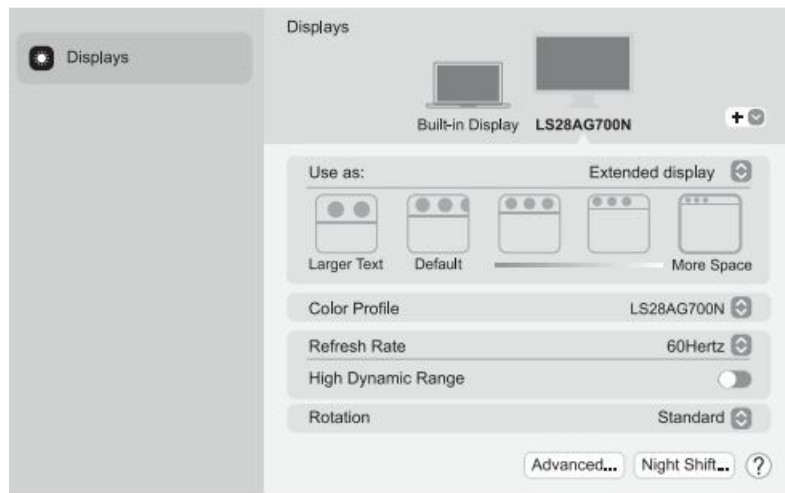
- Windows (Windows 11)

Start>Setting>System>Display



- MacOS (Ventura)

System Settings>Displays



## FAQ

### Q1: When connecting a wireless mouse or keyboard, it may not work properly?

Most wireless device like mouse, keyboard, and Bluetooth device work in the 2.4 Ghz wireless band. USB 3.0 Port has potential for interference that can affect the device's performance. The most effective method is to add a USB 2.0 extension cable between the Docking and the receiver.

### Q2: The display won't work, the resolution or refresh rate is abnormal.

1. Confirm that the USB-C port in your laptop supports dp alt mode. This information you can find out in your laptop's specification or consult your laptop's official customer service.
2. There are some software conflicts, usually the driver problem of the GPU. Upgrade or roll back the driver of GPU version may solve it.

### Q3: The device I connect didn't work, Or the laptop suddenly shuts down.

The connected devices consume too much power, please connect the PD charger.

The tips can't solve my problem, or I have more questions.

If you encounter any problem during using our product, please contact us through amazon's after-sale service or our e-mail:

[support@mokintech.com](mailto:support@mokintech.com) we will help you solve any problem.



---

## Documents / Resources

	<a href="#">MOKiN MODK1701 Mokin USB C Dual Display Mini Docking Station</a> [pdf] User Guide MODK1701 Mokin USB C Dual Display Mini Docking Station, MODK1701, Mokin USB C Dual Display Mini Docking Station, Dual Display Mini Docking Station, Mini Docking Station, Docking Station
---	--

References

- [User Manual](#)