

Contents [[hide](#)]

- [1 MOFLASH X80 Series Visual Signalling Device](#)
- [2 Specifications](#)
- [3 General Installation Notes](#)
- [4 Installation Instructions](#)
- [5 Cable Connections](#)
- [6 Mounting Instructions](#)
- [7 FAQs](#)
- [8 Documents / Resources](#)
 - [8.1 References](#)



MOFLASH X80 Series Visual Signalling Device



Specifications

- **Product:** X80 Series Visual Signalling Device
- **Model Number:** S00637 – ISSUE 1

- **Manufacturer:** Moflash Signalling Limited
- **Website:** www.moflash.com
- **Email:** technical@moflash.co.uk
- **Approval:** IP67 rated when correctly installed

Translations & Documentation, scan QR Code



General Installation Notes

- Installation must be carried out in accordance with the latest codes and regulations by a qualified electrician.
- Ensure power is disconnected prior to installation or maintenance to avoid danger of electrical shock.
- Environmental exposure conditions during installation should be dry. Moist or wet conditions should be avoided.
- The Lens of the product is Polycarbonate plastic. Do not clean with petroleum-based cleaners.
- Avoid mounting the Beacon where it will be subjected to excessive vibration.
- To prevent the risk of electric shock, access to the power supply cables must be prevented either by fitting a suitable sleeve or by means of an insulating barrier.

Installation Instructions

To ensure a weatherproof installation, the Beacon must be fitted with the foam Gasket & mounted on a flat panel or surface. The panel or surface should be drilled to accept the wires and M4 studs. This Beacon is designed to comply with IP67 when correctly installed.

1. For X80-01 & X80-02 Installation

- Connect the Red and Black wires to the mains supply (18- 30vDC or 10- 100vDC/20- 72vAC), ensuring that the Red wire is connected to the Positive

Terminal. For the X80-02, the power supply to the Beacon must be fitted with a 500mA Fuse.

2. For X80-04 Installation

- Connect the Brown and Blue wires to a suitable power supply (115- 230VAC,) ensuring that the Brown wire is connected to the Live Terminal and the Blue wire is connected to the Neutral Terminal.

Cable Connections

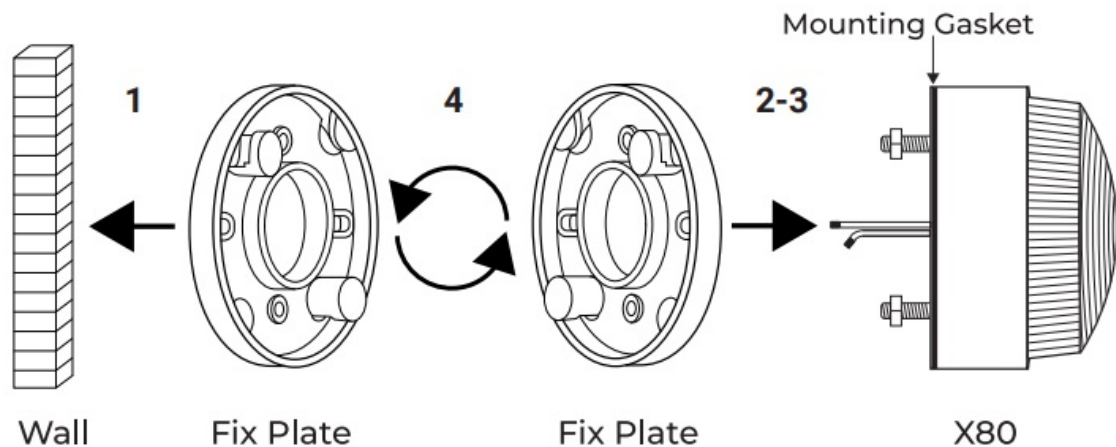
1. For X80-01 & X80-02 Connection

- Black – Negative
- Red – Positive

2. For X80-04 Connection

1. Brown – Live
2. Blue – Neutral

Mounting Instructions



1. Secure one of the two fixing plates provided to a suitable flat surface.
2. Take the other fixing plate and locate it onto the two M4 studs on the rear of the X80, firstly ensuring the foam gasket is in place, then feeding the cables through the plate. The assembly is then secured using the two M4 nuts provided.
3. Take the assembly and feed cables through the plate secured earlier.
4. Locate the assembly onto the plate and secure by turning anti-clockwise. You should hear two clicks.

Please note: The mounting plate supplied is optional as it is not required for

surface/panel mounting. However, it is required when the Beacon cannot be mounted directly to a surface using the two studs located on the Base.

Moflash Signalling Limited accepts no liability for any consequences following the use of this document. Any technical specifications and products referred to within this document are subject to change without notice due to continual improvement and product development policies. All dB(A) figures are subject to environmental conditions. The units are sold under Moflash standard conditions of sale, available on request. Additional resources, including installation sheet translations, certificates, and DoCs are available from the www.moflash.co.uk website.

Moflash Signalling Limited, 11 Upper Conybere Street, Highgate, Birmingham, B12 0EB, UK

FAQs


Q: Is the Beacon weatherproof?

A: Yes, the Beacon is designed to comply with IP67 when correctly installed for weatherproofing.

Q: Do I need the mounting plate for installation?

A: The mounting plate is optional for surface/panel mounting, but required when not mounting directly to a surface using the provided studs.

Documents / Resources

	<p>MOFLASH X80 Series Visual Signalling Device [pdf] Installation Guide</p> <p>X80-01, X80-02, X80 Series Visual Signalling Device, X80 Series, Visual Signalling Device, Signalling Device, Device</p>
---	---

References

- [User Manual](#)

Leave a comment

Your email address will not be published. Required fields are marked *

Comment *

Name

Email

Website

☐ Save my name, email, and website in this browser for the next time I comment.

Post Comment

Search:

Search

[Manuals+](#) | [Upload](#) | [Deep Search](#) | [Privacy Policy](#) | [@manuals.plus](#) | [YouTube](#)

This website is an independent publication and is neither affiliated with nor endorsed by any of the trademark owners. The "Bluetooth®" word mark and logos are registered trademarks owned by Bluetooth SIG, Inc. The "Wi-Fi®" word mark and logos are registered trademarks owned by the Wi-Fi Alliance. Any use of these marks on this website does not imply any affiliation with or endorsement.