



# MoesGo MS-104BZ Smart Switch Module Instruction Manual

[Home](#) » [MoesGo](#) » MoesGo MS-104BZ Smart Switch Module Instruction Manual 

## Contents

- [1 MoesGo MS-104BZ Smart Switch Module](#)
- [2 Product Usage Instructions](#)
- [3 INSTALLATION](#)
- [4 TECHNICAL SPECIFICATIONS](#)
- [5 FAQ](#)
- [6 WARRANTY CARD](#)
- [7 Documents / Resources](#)
  - [7.1 References](#)
- [8 Related Posts](#)

# MoesGo

**MoesGo MS-104BZ Smart Switch Module**



## Technical Specifications

- **Product Type:** Smart Switch Module
- **Voltage:** 90-250V AC
- **Current:** 50/60Hz 10A/Gang; Total 10A
- **Wireless Protocol:** ZigBee 3.0
- **Operation Temp.:** 7°C to 40°C
- **Case Temp.:** -20°C to 45°C
- **Operation Range:** Up to 30 meters
- **Dimensions (WxDxH):** 47mm x 18mm x 52mm
- **IP Rating:** IP20

## Product Usage Instructions

### Step 1: Wiring

1. Turn off the circuit breaker and use an electrical tester to test the power. Ensure the circuit breaker is off before wiring.
2. Follow the wiring diagram for the desired configuration
  - **With one 2 Gang switch:**
    - Connect the wires to the corresponding terminals of the switch.
  - **With 2 Gang 2 Way switches:**
    - Connect the wires to the corresponding terminals of the switches.
  - **With 2 wall socket:**
    - Connect the wires to the corresponding terminals of the wall sockets.

## Step 2: Configuration

1. Insert the module into the junction box.
2. Connect the power supply.
3. Follow the switch module configuration instructions using the mobile app.

**Notes:** Put your smartphone close to the switch module when you're configuring, and make sure you have at least 50% Wi-Fi signal.

### Attention

- Please disconnect the power supply before installing or removing the device to avoid irreversible damage or unpredictable problems.

### FAQ

#### 1. **Q1: What should I do if I can't configure the switch module?**

- a. Please check whether the device is powered on.
- b. Make sure your mobile and ZigBee gateway hub are under the same 2.4GHz WiFi network.
- c. Ensure good internet conditions.
- d. Make sure the password entered in the app is correct.
- e. Verify that the wiring is correct.

#### 2. **Q2: What devices can be connected to this ZigBee switch module?**

Most of your household electrical appliances can be connected, such as lamps, laundry machines, coffee makers, etc.

#### 3. **Q3: What happens if the WiFi goes off?**

You can still control the devices connected to the switch module with your traditional switch. Once WiFi is active again, the devices connected to the app will automatically reconnect for normal control.

#### 4. **Q4: What should I do if I change the WiFi network or password?**

You have to re-connect your Zigbee gateway hub to the new WiFi network according to the app user manual.

## Step 3: Installation

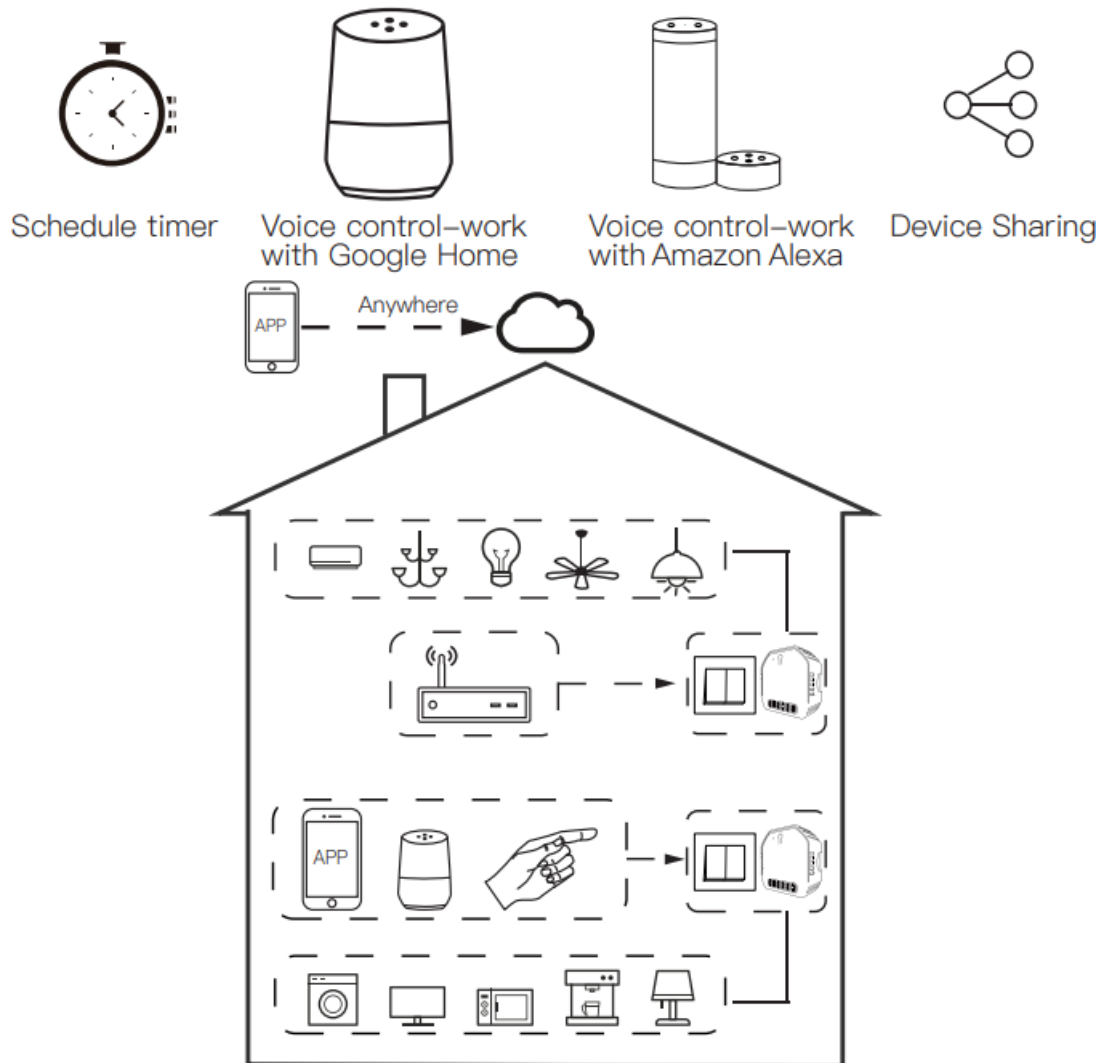
1. Remove the old switch.
2. Remove the switch and pull it away from the wall.
3. Identify the Line/Load Wire (Note: The color of your wire may be different from the color shown on the manual).
4. Verify power is off. We recommend you remove the faceplate from the old switch and use an electrical tester to test all wires connected to the switch to ensure there is no voltage in the circuit. You may need to turn off more than one circuit breaker.

### Installation

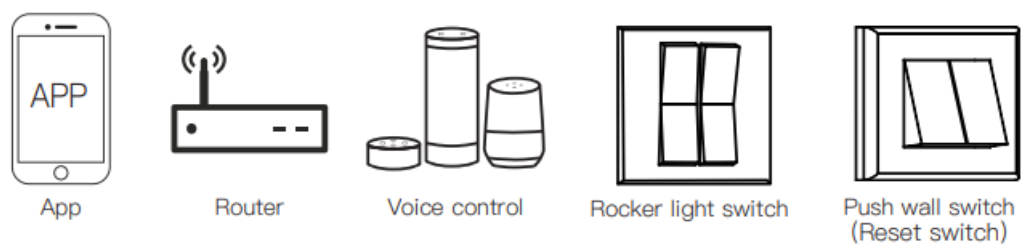
- Follow the instructions provided in the user manual for proper installation and configuration of the smart switch module.

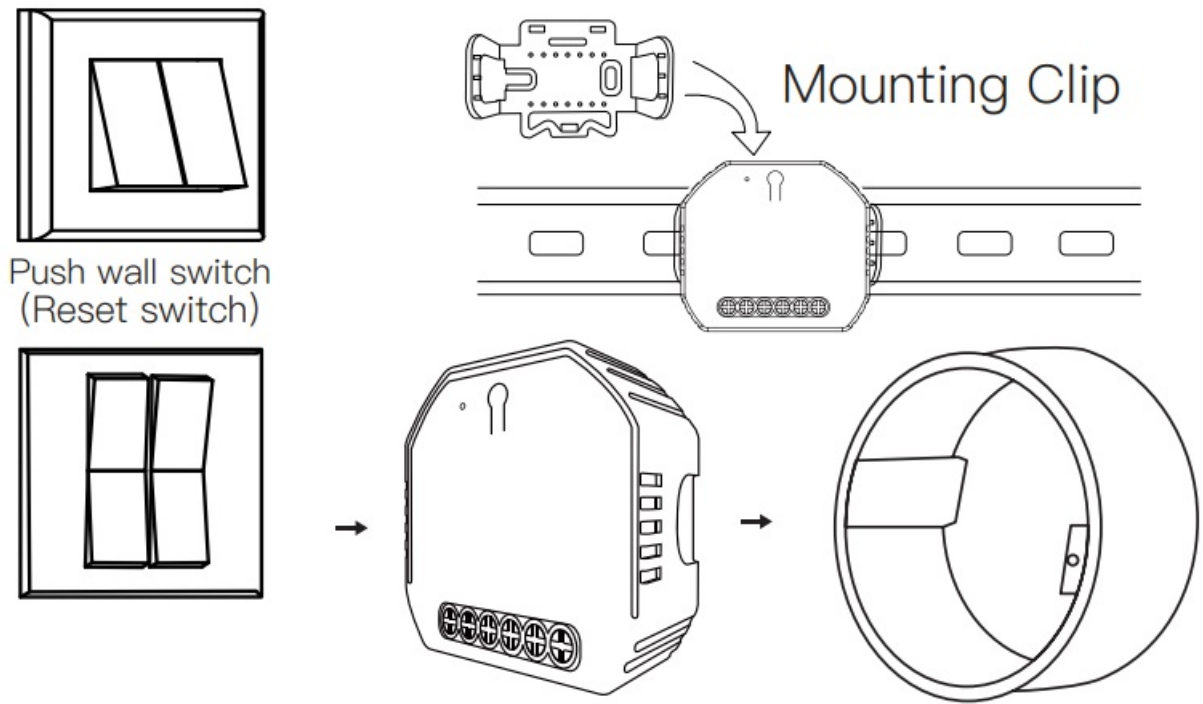


- Global international operation Whenever & Wherever You are, All-in-one Mobile App



- Inhouse local operation





### Step 1

- Turn off the circuit breaker and use the electrical tester to test the power.
- Ensure the circuit breaker is off before wiring.

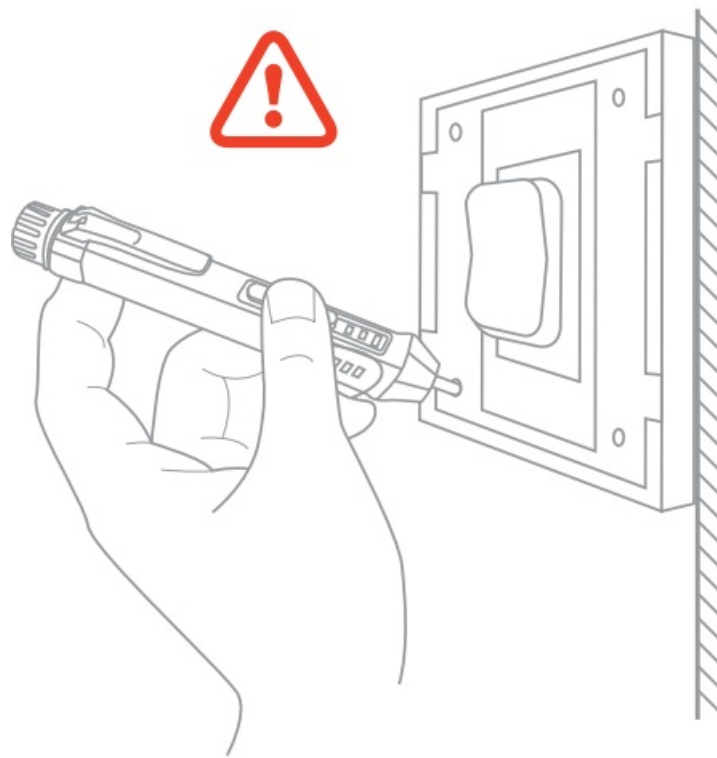
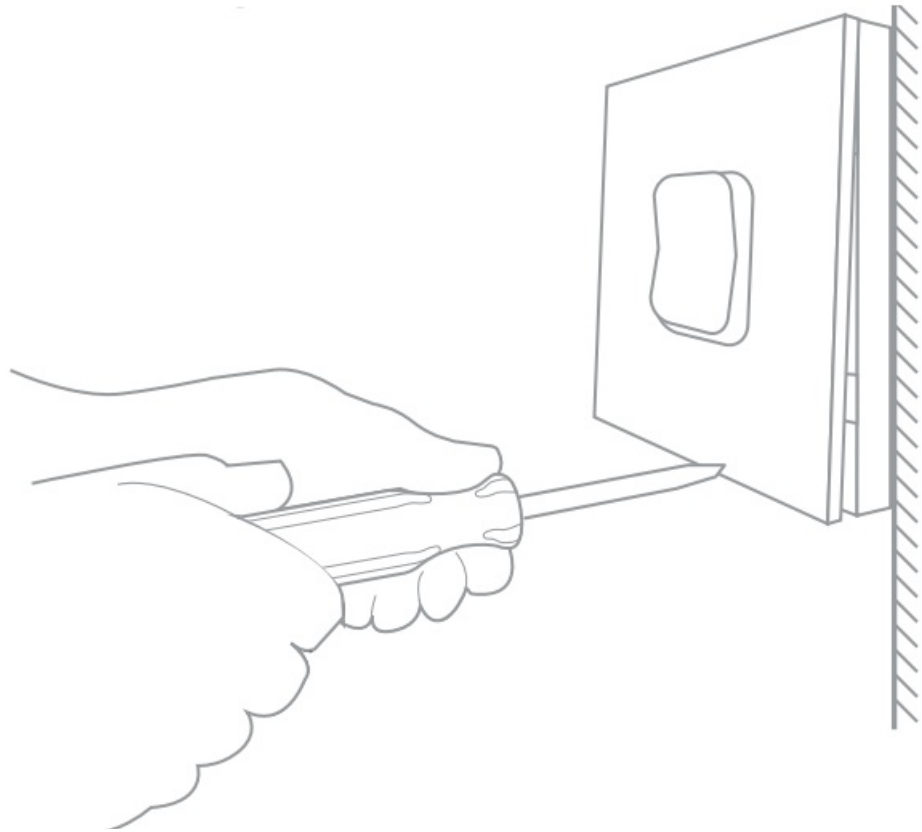


### Attention

- Please disconnect the power supply before installing or removing the device for avoiding irreversible damage on the device from the electric current or some unpredictable problems such as lamp flashing.

### Step 2

- Remove the old switch



### Step 3

- Remove the switch and pull it away from the wall. Identify Line/Load Wire  
(**Note**) :The color of your wire may be different from the color shown on the manual.)

### Verify power is off

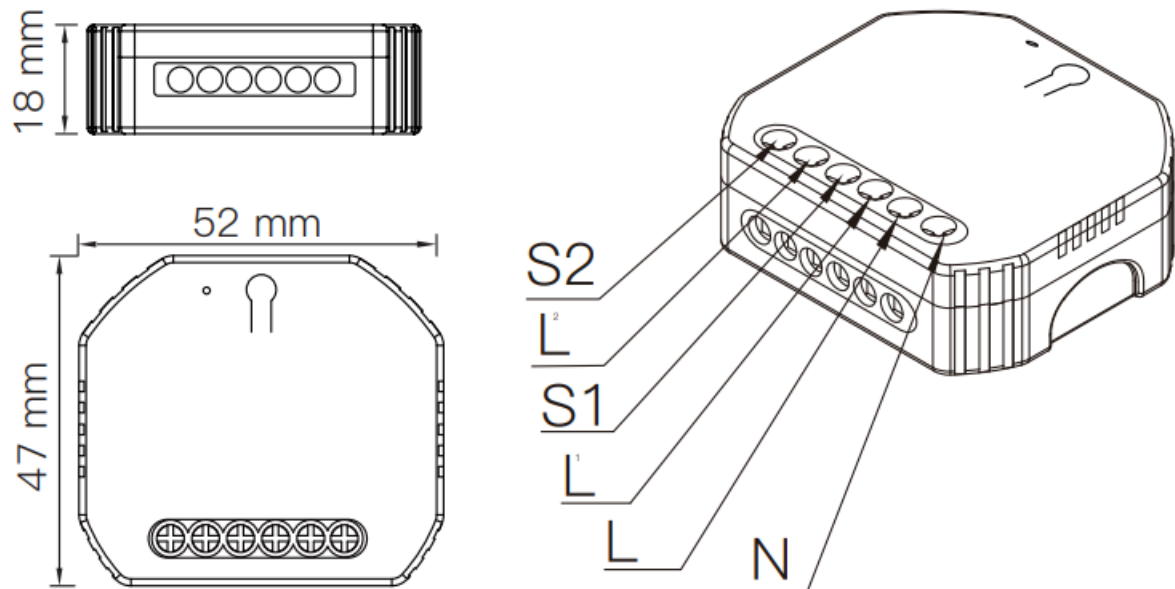
- We recommend you remove the faceplate from the old switch and use an electrical tester to test all wires connected to the switch to ensure there is no voltage in the circuit.

- You may need to turn off more than one circuit breaker.

## INSTALLATION

### Warnings

1. This is a ZigBee smart module switch that must be used under ZigBee gateway hub connected with ZigBee protocol.
2. Installation must be carried out by a qualified electrician in accordance with local regulations.
3. Keep the device out of the reach of children and away from water, damp or hot environment.
4. Install the device away from strong signal sources such as microwave oven that may cause signal interruption resulted in abnormal operation of the device.
5. Obstruction by concrete wall or metallic materials may reduce the effective operation range of the device and should be avoided.
6. Do NOT attempt to disassemble , repair or modify the device.

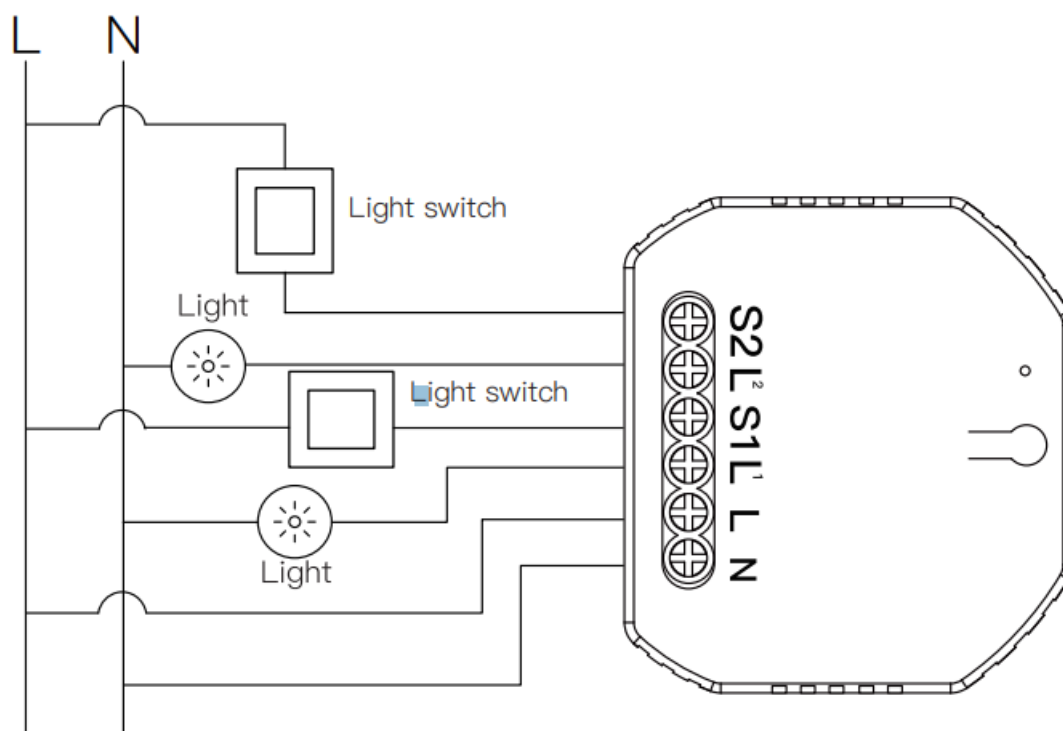


## TECHNICAL SPECIFICATIONS

Product Type	Smart Switch Module
Voltage	90-250V AC 50/60Hz
Current	10A/Gang;Total 10A
Wireless Protocol	ZigBee 3.0
Operation Temp.	-10°C – +40°C
Case Temp.	Tc: +80°C (Max.)
Operation Range	≤200 m
Dims (WxDxH)	52x47x18 mm
IP Rating	IP20

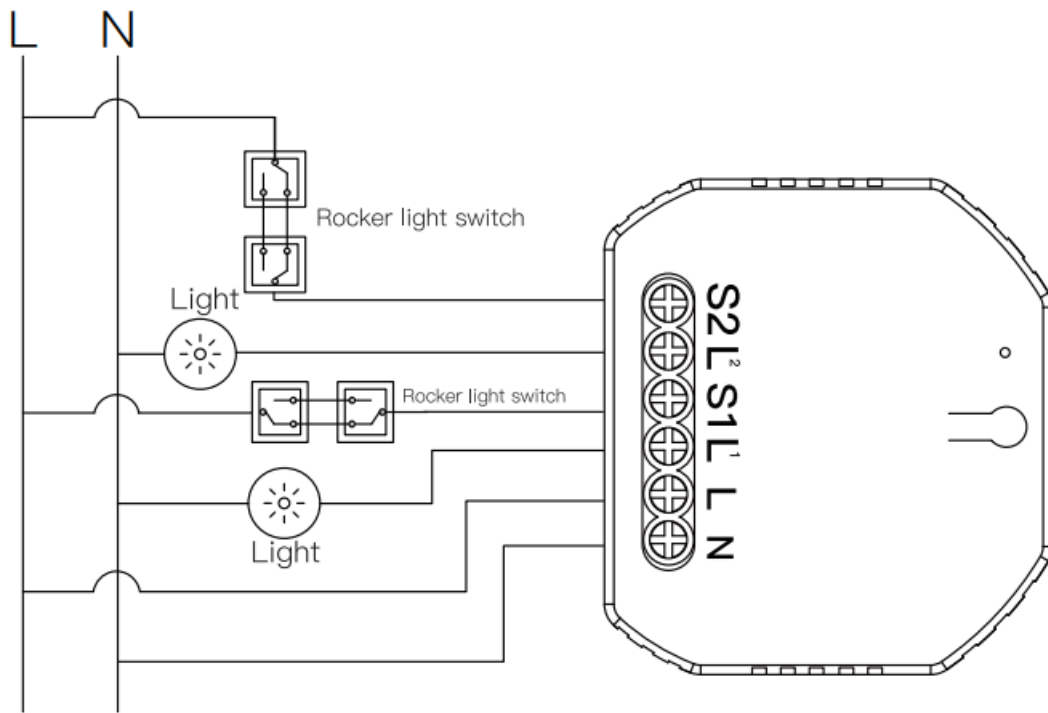
## WIRING DIAGRAM

### 1. With one 2 Gang switch

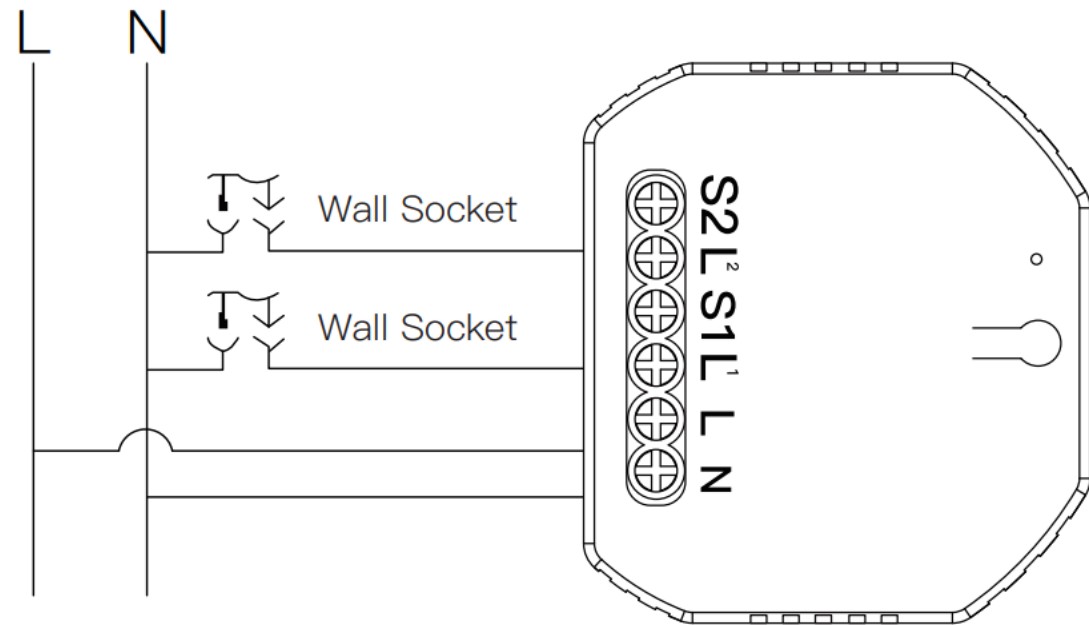


### 2. With one 2 Gang switch





3. With 2 wall socket



## Wiring Instructions and Diagrams

1. Turn off the power supply before carrying out any electrical installation work.
2. Connect wires according to the wiring diagram.
3. Insert the module into the junction box.
4. Connect the power supply and follow switch module configuration instructions.

**Notes:** Put your smartphone close to the switch module when you're configuring, and make sure you have min. 50% Wi-Fi signal.

## FAQ

1. Q1: What should I do if I can't configure the switch module?
  1. a. Please check whether device is powered on.

2. b. Make sure your mobile and ZigBee gateway hub are under the same 2.4GHz WiFi network.
  3. c. Whether it's in good internet conditions.
  4. d. Make sure the password entered in App is correct.
  5. e. Make sure the wiring is correct.
2. Q2: What device can be connected to this ZigBee switch module?
- Most of your household electrical appliances can be, such as lamps, laundry machine, coffee maker, etc.
3. Q3: What happens if the WiFi goes off?
- You can still control the device connected to the switch module with your traditional switch and once WiFi is active again the devices connected to App will connect automatically for normal control.
4. Q4: What should I do if I change the WiFi network or change the password?
- You have to re-connect your Zigbee gateway hub to the new WiFi network according to the App User Manual.

### MANUAL OVERRIDE

The ZigBee switch module terminal reserves the access of manual override function for the end-user to switch on/off

- Switch on/off for permanent on/off function.

### Notes:

1. Both the adjustment on App and switch can be reset, the last adjustment remains in memory.
2. The App control is synchronized with the manual switch.

### APP USER MANUAL

•

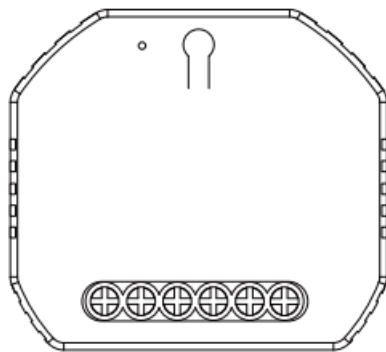


iOS App / Android App

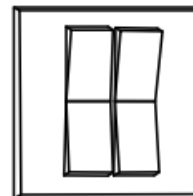
Scan the QR code to download Smart Life App, or you can also search keyword "Smart Life" at App Store or Googleplay to download App.



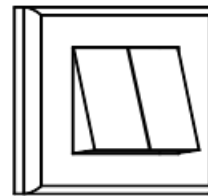
- Log in or register your account with your mobile number or e-mail address. Type in the verification code sent to your mobile or mail box, then set your login password. Click “Create Family” to enter into the App.



Fit for the two switches



Rocker switch

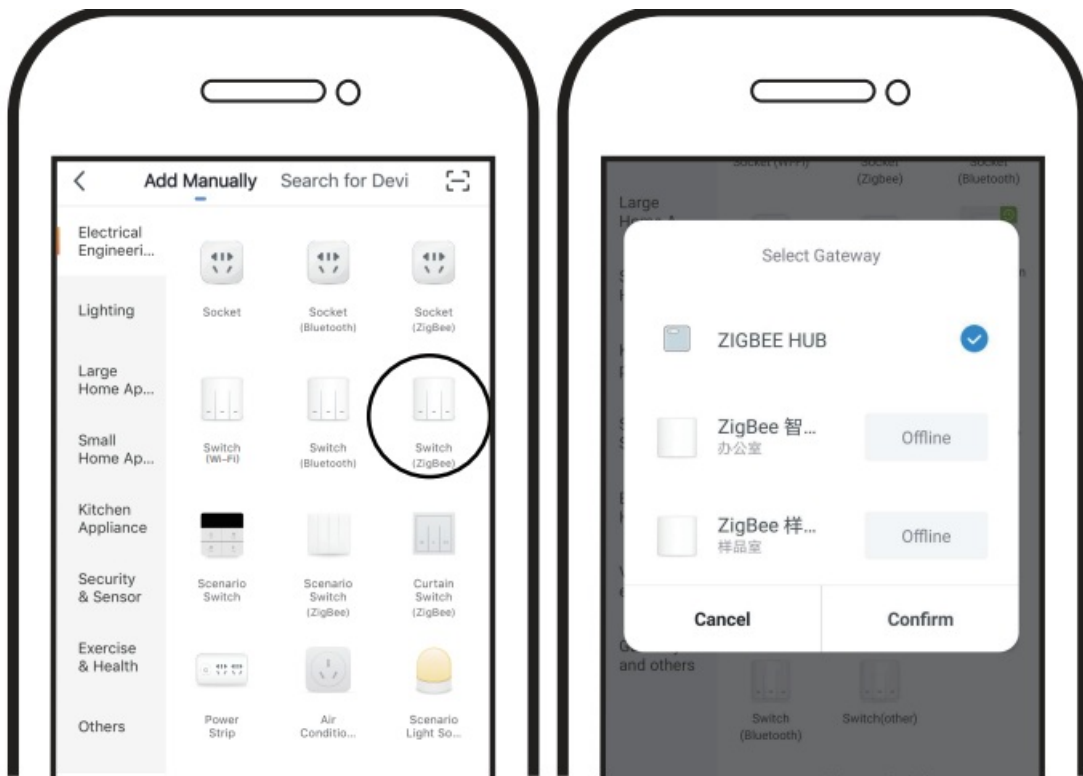


Push wall switch  
(Reset switch)



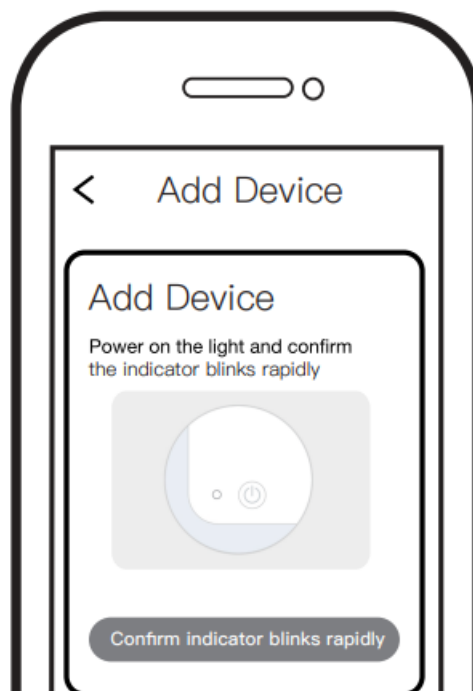
### Zigbee Link/Reset

- **For reset switch:** press the switch button for 10 times to hear the beep sounds continuously.
- **For rocker light switch:** press the switch button for 20 times(ON/OFF cycle for 10 times) to hear the beep sounds continuously.
- **For reset button:** long press the button on the module to hear the beep sounds as Di-Di(2 times) and long press the button again to hear the beep sounds continuously.

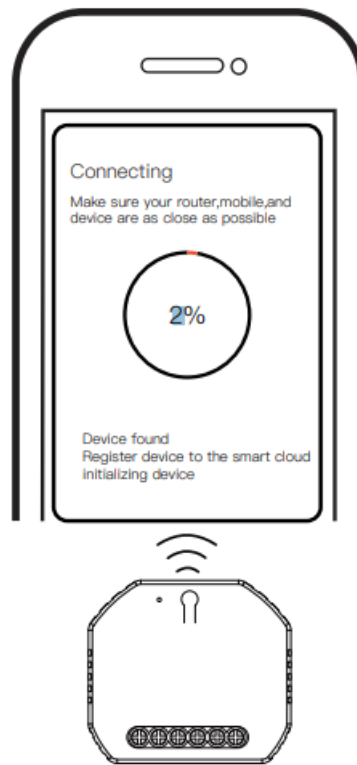


- Open the App, select “+” on top right , choose “Switch (ZigBee)” to add device . And select the right Gateway to confirm the connection.

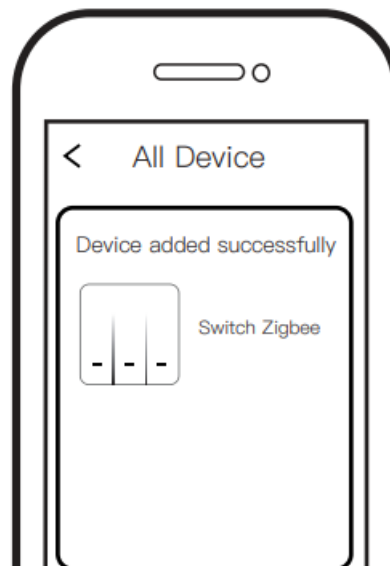
**Note:** Make sure you have successfully connected one ZigBee gateway hub.



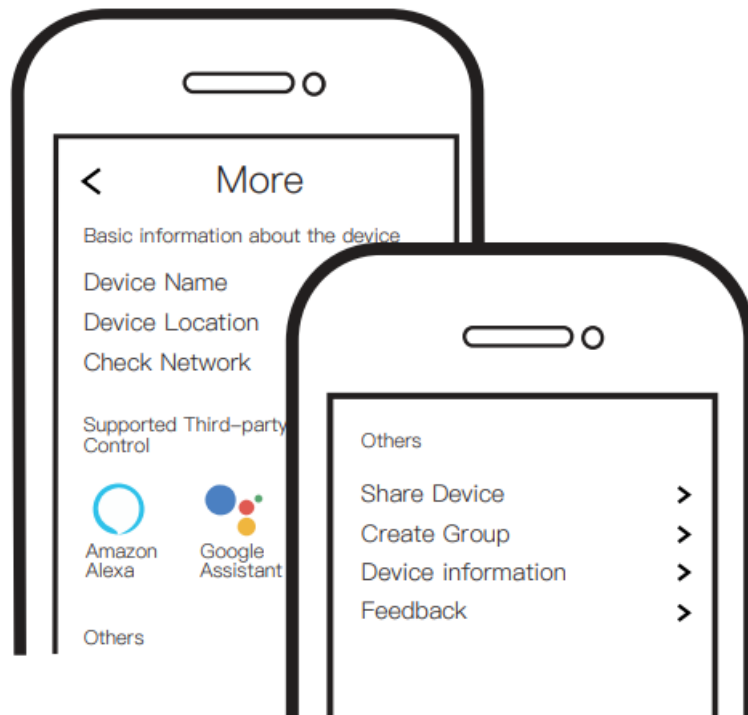
Confirm the ZigBee switch module is beeper rapidly.(twice a second).



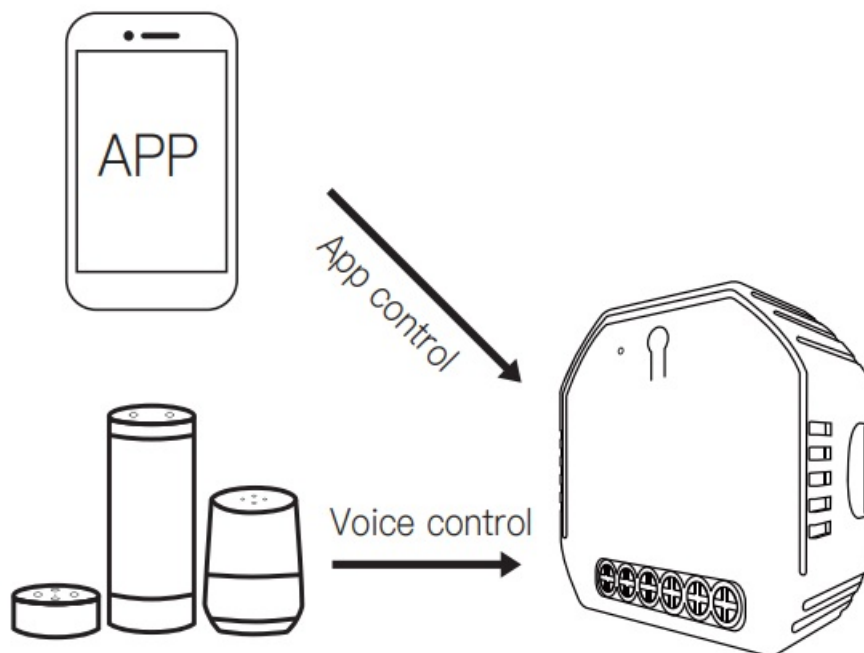
The connecting will take about 10-120 seconds to complete depending on your network condition.



When pairing is done, the ZigBee switch will be shown on the App.



Connect to Amazon Alexa or Google Assistant for voice control, or share the devices with your families or friends.



Enjoy your smart life of home automation for lighting control by using our All-in-one mobile App wherever you are in the world or simply by voice control when you are sitting at home comfortably.

## Pair and clear up the RF code

### 1. How to pair the RF code

1. **For reset switch:** press the switch for 5 times to hear the beep sounds as Di-Di(2 times) for successful pairing.
2. **For rocker light switch :** press the switch for 10 times (ON/OFF cycle for 5 times) to hear the beep sounds as Di-Di(2 times) for successful pairing.
3. **For reset button**

**For button 1:** press the button on the module for once to hear the beep sounds as Di(1 second),then long press the button on the module to hear the beep sounds as Di-Di(2 times) for successful pairing.

**For button 2:** press the button on the module for twice to hear the beep sounds as Di...(2 seconds),then long press the button on the module to hear the beep sounds as Di-Di(2 times)for successful pairing.

## 2. How to clear up the RF code

1. **For reset switch:** press the switch for 5 times to hear the beep sounds as Di-Di(2 times),and press the switch for 5 times again after 5 seconds to hear the beep sounds as Di-Di Di-Di(4 times) for successful clearing.
2. **For rocker light switch:** Press the switch for 10 times (ON/OFF cycle for 5 times) to hear the beep sounds as Di-Di(2 times),and press the switch for 10 times (ON/OFF cycle for 5 times) again after 5 seconds to hear the beep sounds as Di-Di-Di-Di(4 times) for successful clearing.

### 3. For reset button:

**For button 1:** press the button on the module for once to hear the beep sounds as Di(1 second),then long press the button on the module to hear beep sounds as Di-Di(2 times),release your finger for 5 seconds and long press the button again to hear the beep sounds as Di-Di-Di-Di(4 times) for successful clearing.

**For button 2:** press the button on the module for twice to hear the beep sounds as Di...(2 seconds),then long press the button on the module to hear beep sounds as Di-Di(2 times),release your finger for 5 seconds and long press the button again to hear the beep sounds as Di-Di-Di-Di(4 times) for successful clearing.

## SERVICE

- Thank you for your trust and support to our products, we will provide you with a two-year worry-free after-sales service (freight is not included), please do not alter this warranty service card, to safeguard your legitimate rights and interests. If you need service or have any questions, please consult the distributor or contact us.
- Product quality problems occur within 24 months from the date of receipt, please prepare the product and the packaging, applying for after-sales maintenance in the site or store where you purchase; If the product is damaged due to personal reasons, a certain amount of maintenance fee shall be charged for repair.

### We have the right to refuse to provide warranty service if

1. Products with damaged appearance, missing LOGO or beyond the service term
2. Products that are disassembled, injured, privately repaired, modified or have missing parts
3. The circuit is burned or the data cable or power interface is damaged

## RECYCLING INFORMATION

- All products marked with the symbol for separate collection of waste electrical and electronic equipment (WEEE Directive 2012/19 / EU) must be disposed of separately from unsorted municipal waste.
- To protect your health and the environment, this equipment must be disposed of at designated collection points for electrical and electronic equipment designated by the government or local authorities.
- Correct disposal and recycling will help prevent potential negative consequences for the environment and human health.

- To find out where these collection points are and how they work, contact the installer or your local authority.


## WARRANTY CARD

- Product Information
- Product Name\_\_\_\_\_
- Product Type\_\_\_\_\_
- Purchase
- Date\_\_\_\_\_
- Warranty Period\_\_\_\_\_
- Dealer
- Information\_\_\_\_\_
- Customer's Name\_\_\_\_\_
- Customer
- Phone\_\_\_\_\_
- Customer Address\_\_\_\_\_

## Maintenance Records

Failure date	Cause Of Issue	Fault Content	Principal

## Documents / Resources

	<a href="#">MoesGo MS-104BZ Smart Switch Module</a> [pdf] Instruction Manual MS-104BZ Smart Switch Module, MS-104BZ, Smart Switch Module, Switch Module, Module
---	--

## References

- [User Manual](#)