



Moes ZSS-S01-GWM-C Smart Door Window Sensor Instruction Manual

[Home](#) » [MOES](#) » Moes ZSS-S01-GWM-C Smart Door Window Sensor Instruction Manual 

Moes ZSS-S01-GWM-C Smart Door Window Sensor Instruction Manual

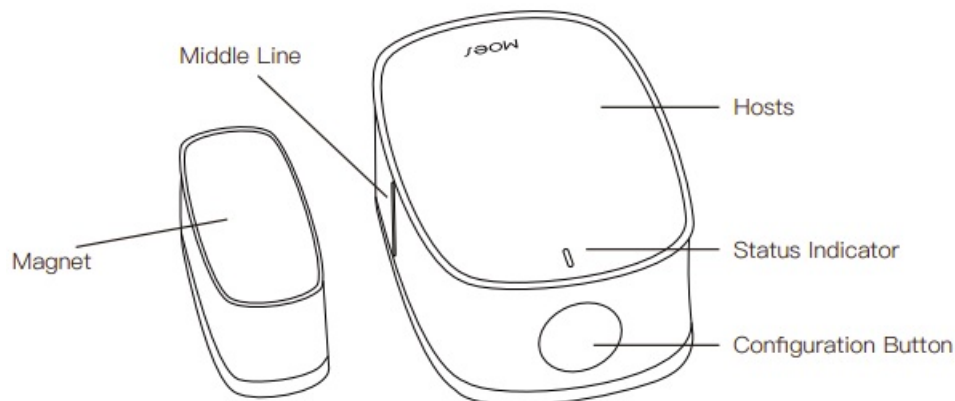


Contents

- 1 Product Introduction
- 2 Packing List
- 3 Installation Instructions
- 4 Add device
- 5 FCC statement
- 6 SERVICE
- 7 RECYCLING INFORMATION
- 8 WARRANTY CARD
- 9 Documents / Resources
 - 9.1 References
- 10 Related Posts

Product Introduction

Smart Door/Window Sensor senses the opening and closing status of doors and windows by detecting the proximity and separation of magnets. Alarm information can be uploaded through Zigbee protocol in wireless IOT mode. Records can be uploaded to realise the security detection of the monitored objects. This product is suitable for home residence, building villa, factory, shopping mall, office building and so on.



Make sure the side of the magnet with marked line is aligned to the side of the hosts marked with the Middle line.

Packing List

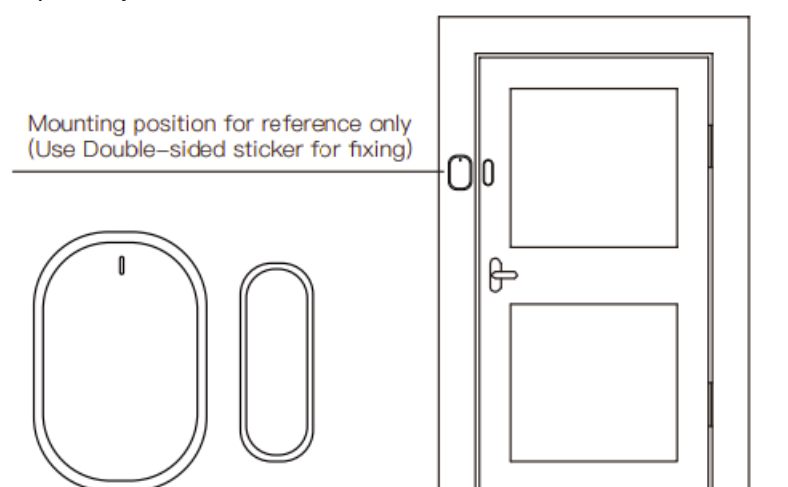
- Door/Window Sensor
- Battery *1
- Product user manual
- Double-sided sticker *2

Technical Parameters

	Toxic and hazardous substances or elements					
Part Name	Lead(Pb)	Mercury(Hg)	Chromium (Cd)	Hexavalentm otto(Cr(VI))	Doadiphenyl (PBB)	Dioxydiphenyletherphenyl ether(PBDE)
LED						
Circuit Board	X					
Housings and other components	X					

Installation Instructions

The product can be applied to the door, window and other scenes, please install the host and the magnet separately on the fixed door frame or window, as shown in the following figure.



- Do not install outdoors, on a weak foundation, or in a location subject to rain.
- Do not place magnetic metals or other objects to avoid interfering with the sensor's work

Preparation for Use

Download MOES App on App store or scan the



QR code



MOES App is upgraded as much more compatibility than Tuya Smart/Smart Life App, functional well for scene

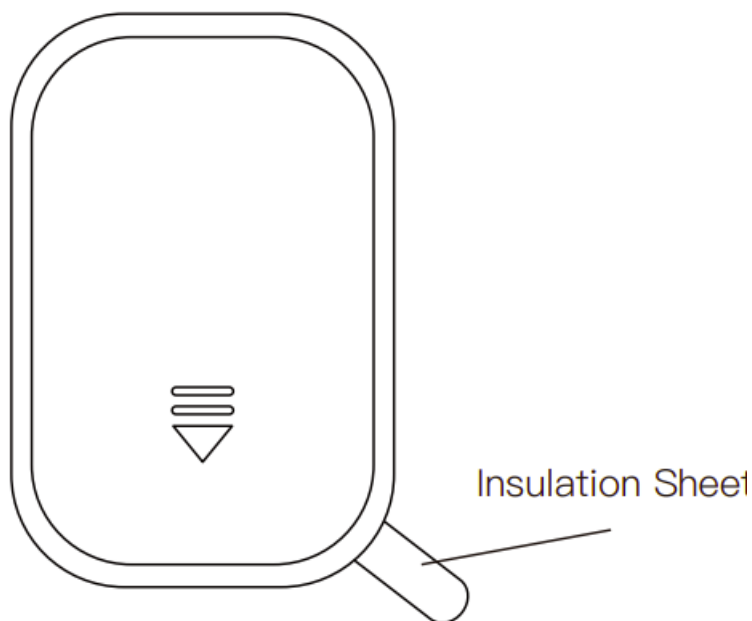
controlled by Siri, widget and scene recommendations as the fully new customized service. (Note: Tuya Smart/Smart Life App still works, but MOES App is highly recommended)

Registration or Log in

- Download“ MOES” Application.
- Enter the Register/Login interface, tap “Register to create an account by entering your phone number to get verification code and “Set password. Choose “Log in” if you already have a MOES account.

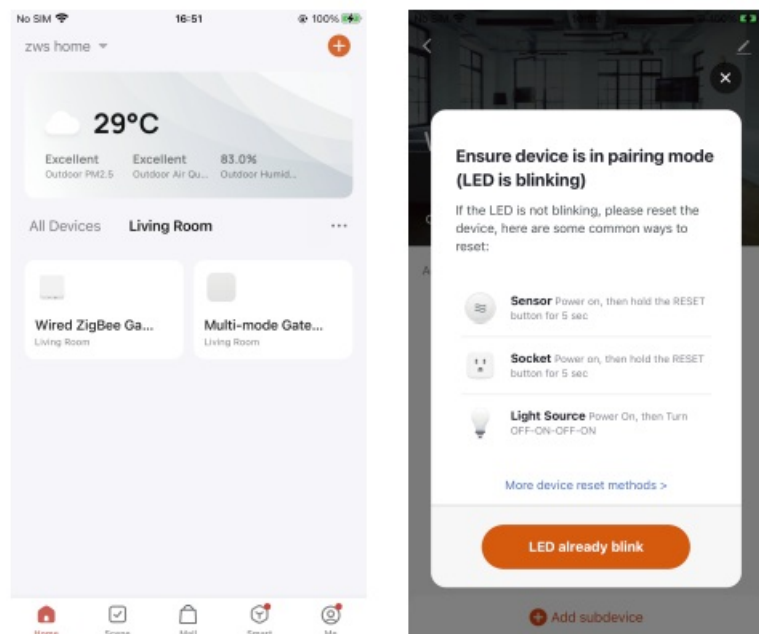
Add device

Slide the rear cover towards the direction of the arrow, remove the rear cover, then remove the insulation sheet and finally reinstall the rear cover.



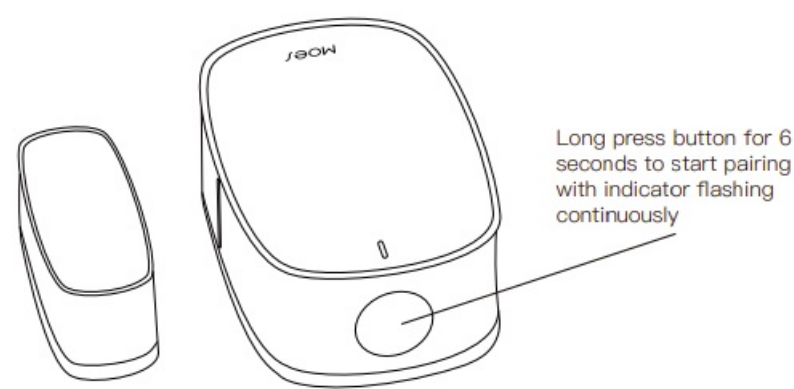
Remove insulation sheet to power on the sensor.

Open the MOES APP, make sure the ZigBee gateway/multimode gateway is connected to the APP, enter the gateway and click “Add New Device”.

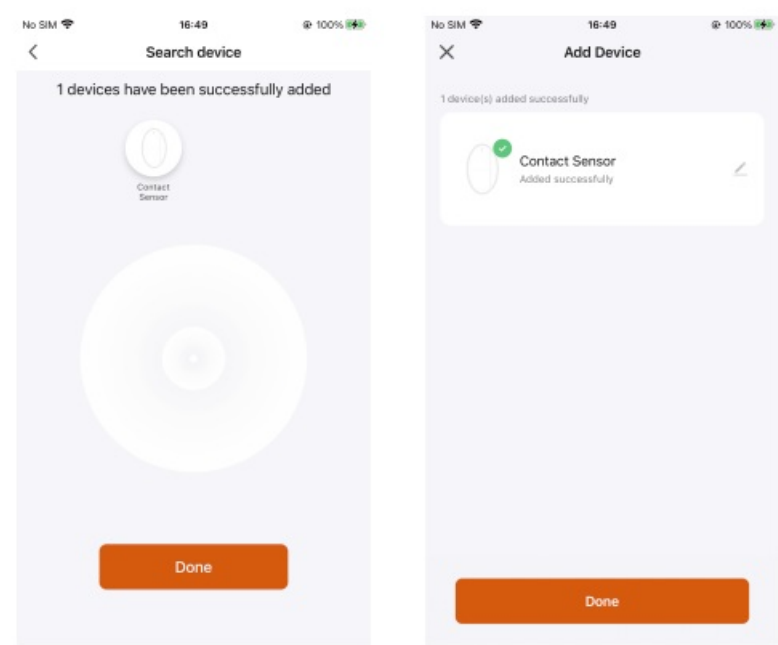


Enter configuration mode

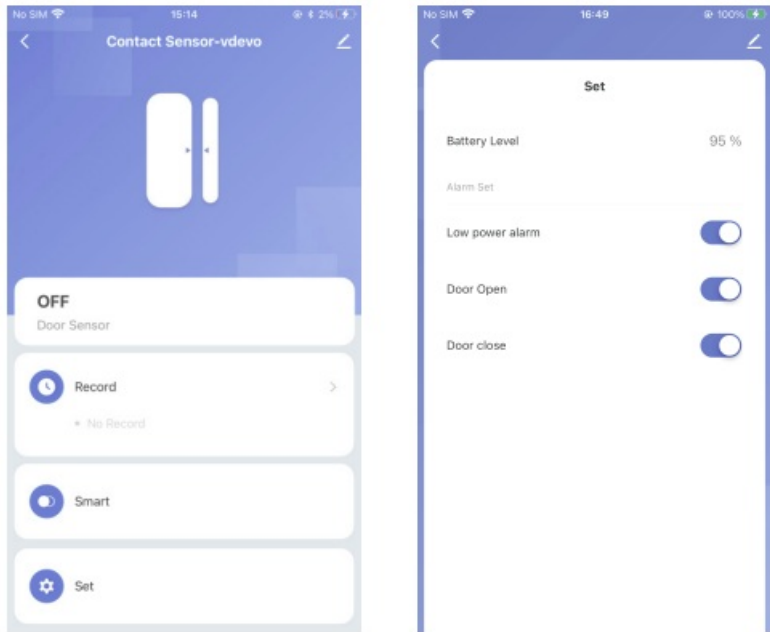
Press and hold the “button” for more than 6 seconds until the white indicator light flashes quickly, and the sensor enters pairing mode. (Note: When configuring the network, please make the device as close as possible to the gateway.) ②If the network configuration fails, press and hold the device button again until the white light flashes quickly, and repeat the above operations.



Wait for 10-120 seconds. After adding the device successfully, you can edit the device name.



Now you can set “smart scene linkage” according to your needs and enjoy your smart home life.



FCC statement

This device complies with part 15 of the FCC Rules. Operation is subject to the following two conditions:

1. This device may not cause harmful interference, and
2. this device must accept any interference received, including interference that may cause undesired operation.

Any changes or modifications not expressly approved by the party responsible for compliance could void the user's authority to operate the equipment.

This equipment has been tested and found to comply with the limits for a Class B digital device, pursuant to part 15 of the FCC Rules. These limits are designed to provide reasonable protection against harmful interference in a residential installation. This equipment generates, uses and can radiate radio frequency energy and, if not installed and used in accordance with the instructions, may cause harmful interference to radio communications. However, there is no guarantee that interference will not occur in a particular installation. If this equipment does cause harmful interference to radio or television reception, which can be determined by turning the equipment off and on, the user is encouraged to try to correct the interference by one or more of the following measures:

- Reorient or relocate the receiving antenna.
- Increase the separation between the equipment and receiver.
- Connect the equipment into an outlet on a circuit different from that to which the receiver is connected.
- Consult the dealer or an experienced radio/TV technician for help.

FCC Radiation Exposure Statement

This equipment complies with FCC radiation exposure limits set forth for an uncontrolled environment. This equipment should be installed and operated with minimum distance 20cm between the radiator & your body.

Restriction of elements or element identification tables

	Toxic and hazardous substances or elements					
Part Name	Lead(Pb)	Mercury(Hg)	Chromium (Cd)	Hexavalentm otto(Cr(VI))	Doadiphenyl (PBB)	Dioxydiphenyleth erphenyl ether(P BDE)
LED	o	o	o	o	o	o
Circuit Board	X	o	o	o	o	o
Housings and ot hercomponents	X	o	o	o	o	o

This form has been prepared in accordance with the provisions of SJ/T 1136

o:Indicates that the content of the toxic and hazardous substances in all homogeneous materials of the component is below the limits specified in the GB/T26572 standard limit requirements below.

X:Indicates that the content of the toxic and hazardous substance in at least one homogeneous material of the component exceeds the limit requirements specified in GB/T26572 standard.

SERVICE

Thank you for your trust and support to our products, we will provide you with a two-year worry-free after-sales service (freight is not included), please do not alter this warranty service card, to safeguard your legitimate rights and interests. If you need service or have any questions, please consult the distributor or contact us. Product quality problems occur within 24 months from the date of receipt, please prepare the product and the packaging, applying for after-sales maintenance in the site or store where you purchase; If the product is damaged due to personal reasons, a certain amount of maintenance fee shall be charged for repair. We have the right to refuse to provide warranty service if:

1. Products with damaged appearance, missing LOGO or beyond the service term
2. Products that are disassembled, injured, privately repaired, modified or have missing parts
3. The circuit is burned or the data cable or power interface is damaged
4. Products damaged by foreign matter intrusion (including but not limited to various forms of fluid, sand, dust, soot, etc.)

RECYCLING INFORMATION



All products marked with the symbol for separate collection of waste electrical and electronic equipment (WEEE Directive 2012/ 19 / EU) must be disposed of separately from unsorted municipal waste. To protect your health and the environment, this equipment must be disposed of at designated collection points for electrical and electronic equipment designated by the government or local authorities. Correct disposal and recycling will help prevent potential negative consequences for the environment and human health. To find out where these collection points are and how they work, contact the installer or your local authority.

WARRANTY CARD

Product Information

Product Name _____
Product Type _____
Purchase Date _____
Warranty Period _____
Dealer Information _____
Customer's Name _____
Customer Phone _____
Customer Address _____

Maintenance Records

Failure date	Cause Of Issue	Fault Content	Principal

Thank you for your support and purchase at we Moes, we are always here for your complete satisfaction, just feel free to share your great shopping experience with us.



If you have any other need, please do not hesitate to contact us first, we will try to meet your demand.



@moes_smart



MOES.Official



@moes_smart



www.moes.net



@moessmart



@moes_smart



AMZLAB GmbH Laubenhof 23, 45326 Essen



UK EVATOST CONSULTING LTD

Address: Suite 11, First Floor, Moy Road
Business Centre, Taffs Well, Cardiff,
Wales, CF15 7QR

Tel: +442921680945

Email: contact@evatmaster.com



WENZHOU NOVA NEW ENERGY CO.,LTD

Address: Power Science and Technology
Innovation Center, NO.238, Wei 11 Road,
Yueqing Economic Development Zone, Yueqing, Zhejiang, China

Tel: +86-577-57186815

Email: service@moeshouse.com

Made In China

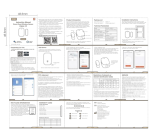


WORKS WITH Google Assistant



WORKS WITH alexa

Documents / Resources



[Moes ZSS-S01-GWM-C Smart Door Window Sensor](#) [pdf] Instruction Manual
ZSS-S01-GWM-C Smart Door Window Sensor, ZSS-S01-GWM-C, Smart Door Window Sensor
, Door Window Sensor, Window Sensor, Sensor

References

- [M MOES Smart: Create Your Smart Life With Smart Home Devices](#)
- [User Manual](#)