



# Moes ZS-SR ZigBee 3.0 Smart Switch User Manual

[Home](#) » [MOES](#) » Moes ZS-SR ZigBee 3.0 Smart Switch User Manual 

## Contents

- [1 Moes ZS-SR ZigBee 3.0 Smart Switch](#)
- [2 Specifications](#)
- [3 Product Description](#)
- [4 Installation](#)
- [5 Getting Ready for Use](#)
- [6 Connecting the APP to the Device](#)
- [7 Smart Device Linked Voice Speaker](#)
- [8 Warranty Conditions](#)
- [9 Documents / Resources](#)
  - [9.1 References](#)
- [10 Related Posts](#)



**Moes ZS-SR ZigBee 3.0 Smart Switch**



## Specifications

- Product Name: ZigBee 3.0 Smart Switch
- Protocol: ZigBee
- Maximum Current: Not specified
- Operating Voltage: Not specified
- Operating Temperature: Not specified
- Rated Power: Not specified
- Supported Operating Systems: Not specified

## Product Description

The ZigBee 3.0 Smart Switch is a smart home device that allows you to control your lights or other electrical devices remotely using a compatible ZigBee gateway and a mobile app.

## Safety Information

**Electric Shock Hazard:** Improper handling of electricity may result in personal injury and property damage. If any part of these instructions is unclear, seek professional assistance from a qualified electrician to ensure safe installation and operation.

## Installation

1. Turn off the circuit breaker and use an electrical tester to verify the power is off. Ensure the circuit breaker remains off during the wiring process.
2. Before installing or removing the device, disconnect the power supply to prevent irreversible damage from electric current or potential issues like lamp flashing.
3. Remove the existing switch by pulling it away from the wall.
4. Identify the Line/Load Wire (Note: The wire color may differ from the manual's illustration.) Verify that the power is off. We recommend removing the faceplate from the old switch and using an electrical tester to check all

wires connected to the switch, ensuring no voltage in the circuit. It may be necessary to turn off multiple circuit breakers.

5. Take pictures of the wiring.
6. Follow the wiring diagram to connect the switch wires to the wall box wires, considering the wire conductors.
7. Open the switch panel from the bottom using a screwdriver.
8. Mount the switch with the provided screws and snap on the wall plate.
9. Turn the power back on at the circuit breaker and then switch on the light.

## Getting Ready for Use

1. Download the MOES App. The MOES App offers enhanced compatibility compared to the Tuya Smart/Smart Life App. It functions seamlessly with Siri for scene control, provides widgets, and offers scene recommendations as part of its brand-new, customized service. (Please note: While the Tuya Smart/Smart Life App still works, we highly recommend using the MOES App.)
2. Account Registration or Login: Access the Register/Login interface: select Register to create an account by inputting your phone number for a verification code and setting a password. Opt for Login if you already possess a MOES account.

## Connecting the APP to the Device

Ensure the device is within the effective signal coverage of your smart Zigbee gateway for a successful connection in the MOES app.

- **Method One:** Scan the QR code to configure the network guide.
- Confirm that your MOES App has successfully connected to a Zigbee gateway.

## FAQ

- Q: What is the maximum current supported by the ZigBee 3.0 Smart Switch?
- A: The user manual does not specify the maximum current supported by the switch. Please contact the customer line for more information.
- Q: What is the operating voltage of the ZigBee 3.0 Smart Switch?
- A: The user manual does not specify the operating voltage of the switch. Please contact the customer line for more information.
- Q: What is the operating temperature range of the ZigBee 3.0 Smart Switch?
- A: The user manual does not specify the operating temperature range of the switch. Please contact the customer line for more information.

## Dear customer,

Thank you for purchasing our product. Please read the following instructions carefully before first use and keep this user manual for future reference. Pay particular attention to the safety instructions. If you have any questions or comments about the device, please contact the customer line.

✉ [www.alza.co.uk/kontakt](mailto:www.alza.co.uk/kontakt)

☎ +44 (0)203 514 4411

Importer Alza.cz a.s., Jankovcova 1522/53, Holešovice, 170 00 Praha 7, [www.alza.cz](http://www.alza.cz)

## Product Description

This newly designed smart switch with 1/2/3/4 gang optional is designed with ZigBee protocol to replace traditional switches with a variety of ways to control. One switch for two wirings is optional(N+L wire / only L wire) and a ZigBee hub is required for normal use. Now one new smart feature as multi-control association(only for N+L wire) to other smart switches is added to the MOES App, and all-controlling modes work without any interference. Its design is suitable for different decoration styles with its best value.

## Safety Information

**Electric Shock Hazard:** Improper handling of electricity may result in personal injury and property damage. If any part of these instructions is unclear, seek professional assistance from a qualified electrician to ensure safe installation and operation.

## Specification

- Product Name: Smart Switch
- Protocol: Zigbee3.0
- Max Current:10A
- Working Voltage: AC100V-240V
- Working Temperature: -10~65°C
- Rated Power (Resistive load): <2000W
- Support system: Android / iOS

## Caution

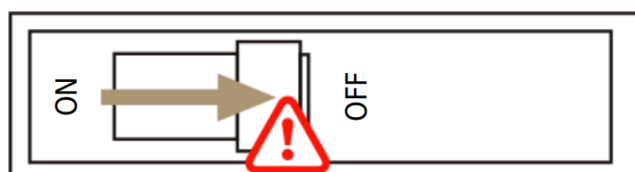
Before wiring, ensure to deactivate the power at the circuit breaker and verify that it is completely turned off.

## Installation

Prior to wiring, ensure the power at the circuit breaker is switched off. Two versions are available, each with optional features: one requires a neutral wire, while the other operates without a neutral in your switch boxes. Please wire according to the specifications of the purchased switch. If you've selected a version that necessitates a neutral wire, confirm the presence of a Neutral Wire (typically white) in your wall box. If not, consider an alternative location in your home or seek the assistance of a professional electrician for installation. Note that wire colors mentioned in this manual are standard but may vary in some households. Ensure a secure connection of wire conductors. Prior to wiring, confirm the stability of the Wi-Fi signal, and ensure both your mobile device and Zigbee gateway hub are connected to the same 2.4 GHz Wi-Fi network. For those without wiring experience, it is advisable to consult a professional electrician.

### Step 1

- Turn off the circuit breaker and use the electrical tester to test the power.
- Ensure the circuit breaker is off before wiring.



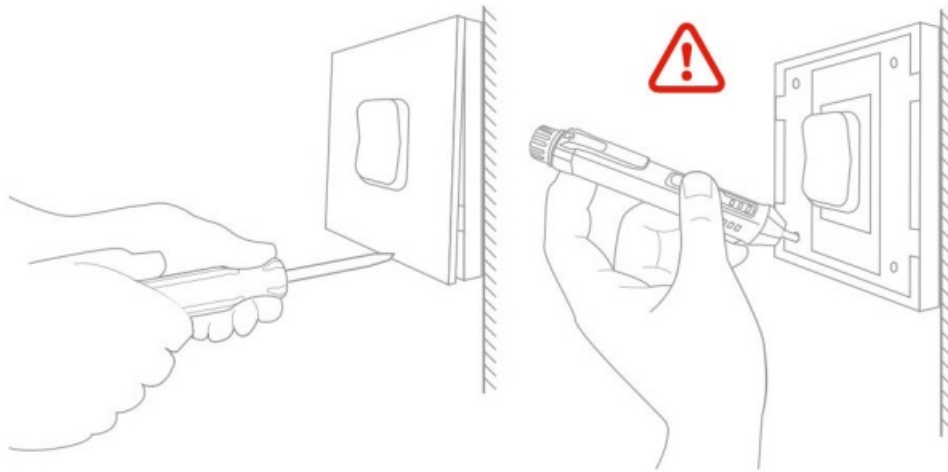
## Attention:

Please disconnect the power supply before installing or removing the device for avoiding irreversible damage on

the device from the electric current or some unpredictable problems such as lamp flashing.

## Step 2

- Remove the old switch



## Step 3

- Remove the switch and pull it away from the wall. Identify Line/Load Wire (Note: The color of your wire may be different from the color shown on the manual.)

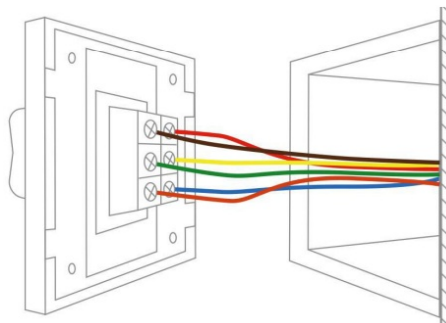
### Verify power is off

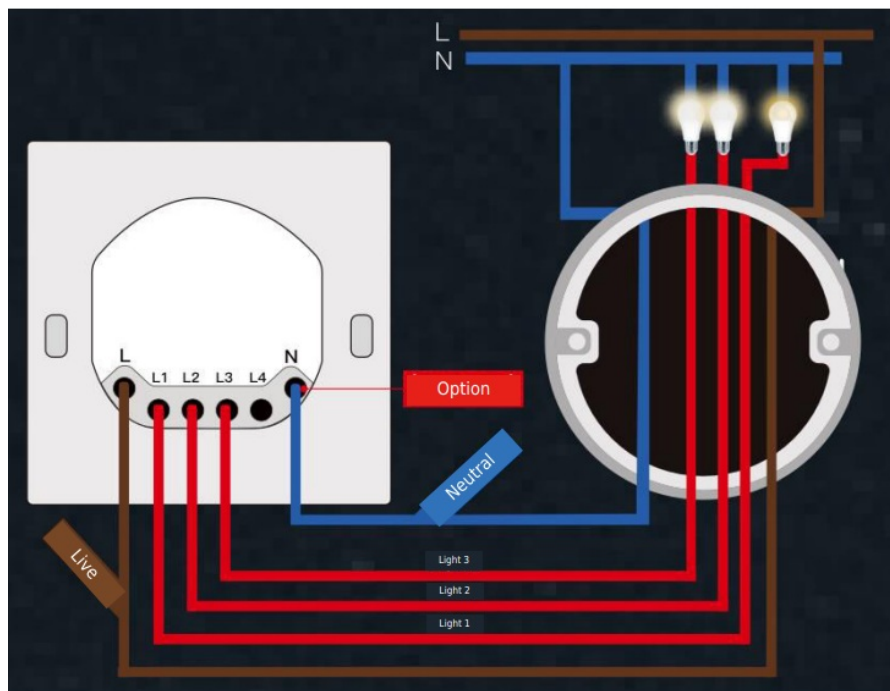
We recommend you remove the faceplate from the old switch and use an electrical tester to test all wires connected to the switch to ensure there is no voltage in the circuit. You may need to turn off more than one circuit breaker.

## Step 4

Take pictures of the wiring

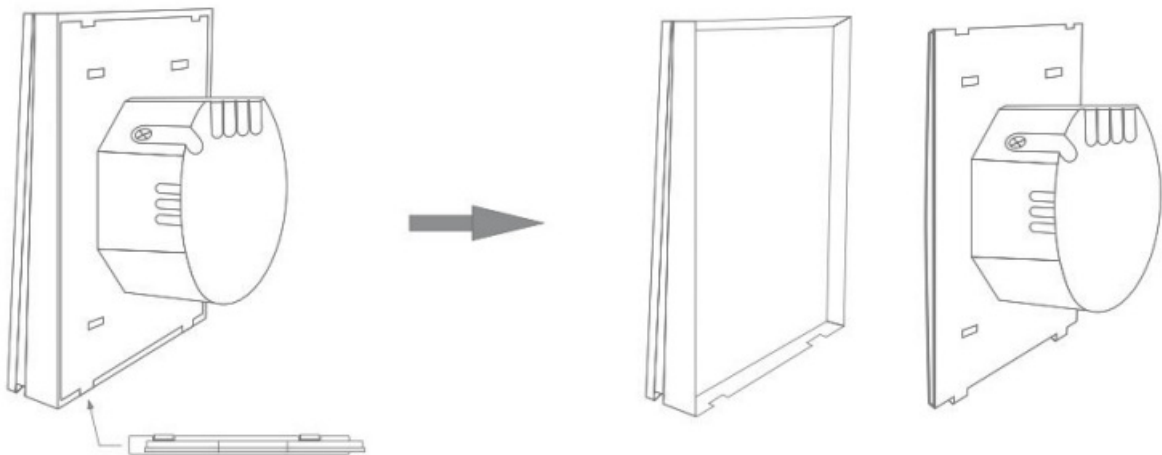
- Follow the wiring diagram to connect the switch wires to the wires in the wall box with the wire conductors.



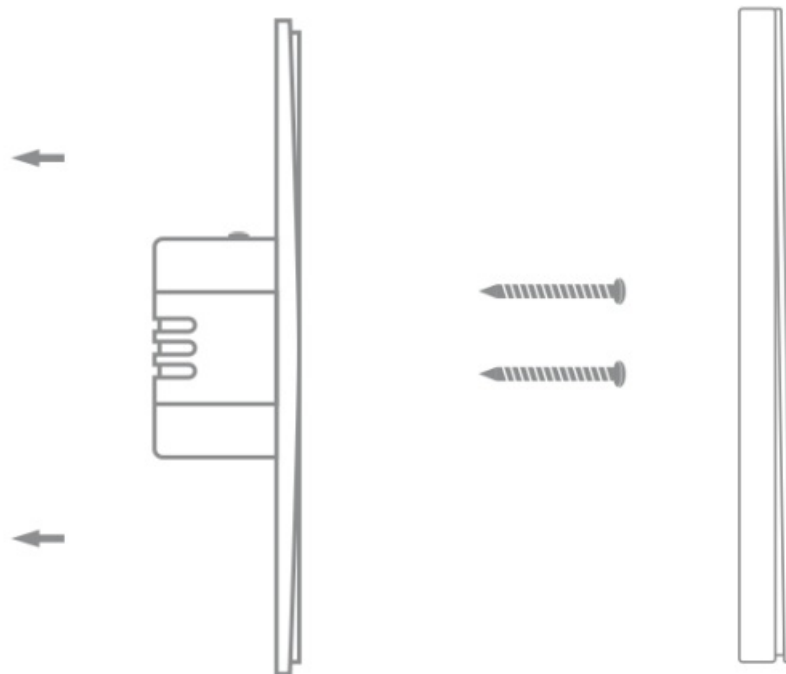


## Step 5

- Open the switch panel from the bottom of the switch with a screwdriver



- Mount the switch with the provided screws and snap the wall plate on it.



### Step 6

Turn the power back on at the circuit breaker and then switch the light on.

### Getting Ready for Use

1. Download MOES App on App store or scan the QR code <https://a.smart321.com/moeswz>

MOES APP is upgraded as much more compatibility than Tuya Smart/Smart Life APP, functional well for scenes controlled by Siri, widget, and scene recommendations as the fully new customized service.

**(Note:** Tuya Smart/Smart Life APP still works, but MOES APP is highly recommended)



2. Account Registration or Login:

Enter the Register/Login interface; tap “Register” to create an account by entering your phone number to get verification code and “Set password”. Choose “Log in” if you already have a MOES account.



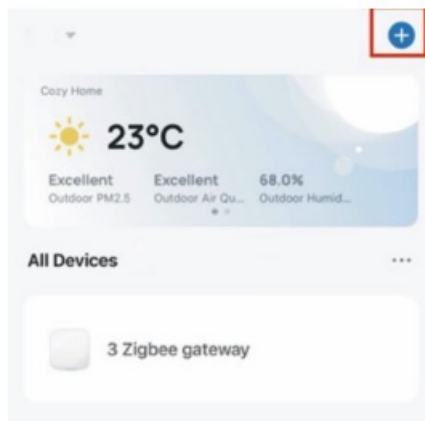
### Connecting the APP to the Device

Ensure the device is within the effective signal coverage of your smart ZigBee gateway for successful connection into the ZigBee gateway in MOES APP.

### Method One:

Scan the QR code to configure the network guide.

1. Make sure your MOES APP has successfully connected to a Zigbee gateway.



1



2



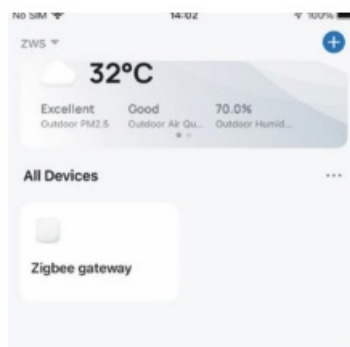
Scan this QR Code



3

### Method Two

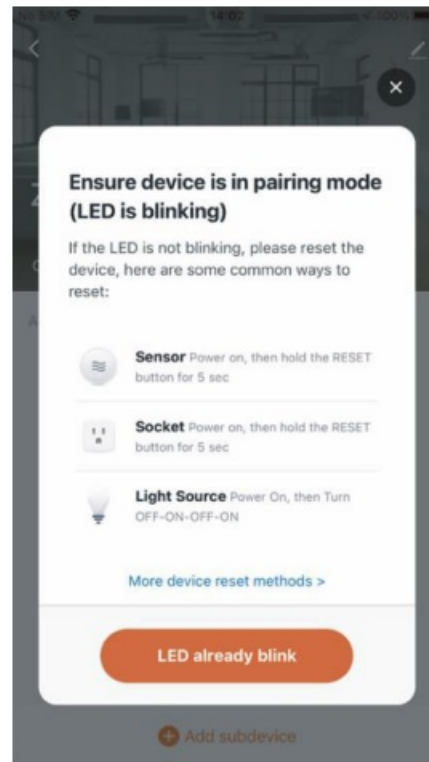
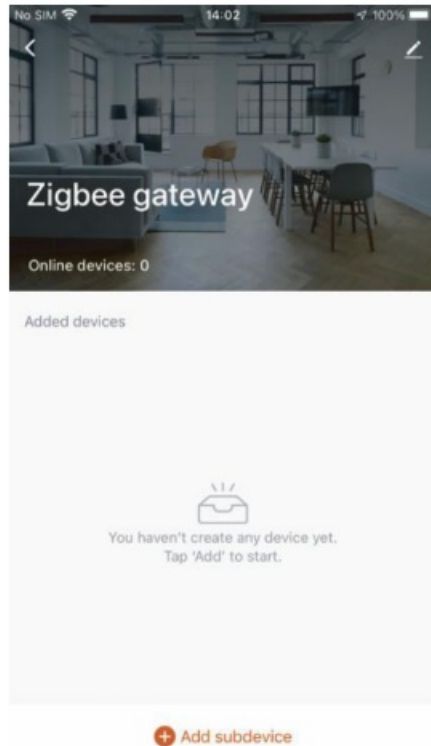
1. Ensure your MOES APP has successfully connected to a Zigbee gateway.



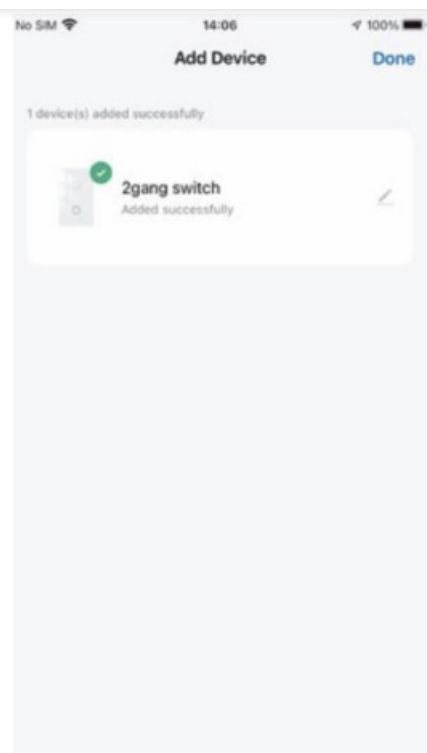
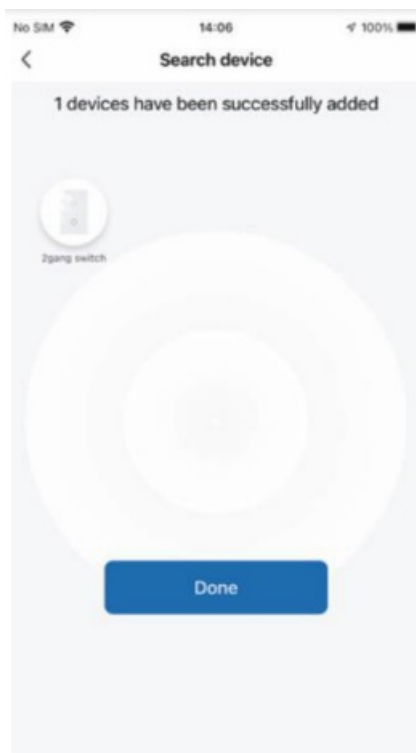
2. Press and hold the button for about 7 seconds, until the indicator on the switch flashes fast after 3 seconds. Repair is successful.
3. Enter the gateway. Please follow the picture below to finish as "Add subdevice" → LED already blink, and the



connecting will take about 10-120 seconds to complete depending on your network condition.



4. Once the device is successfully added, you can edit its name and enter the device page by clicking “Done.”



5. Click “Done” to enter the device page to enjoy your smart life with home automation.



### How to Reset/Re-pair ZigBee code

Press and hold the button for about 7 seconds, until the indicator on the switch flash fast after 3 seconds. Reset/Re-pair is successful.

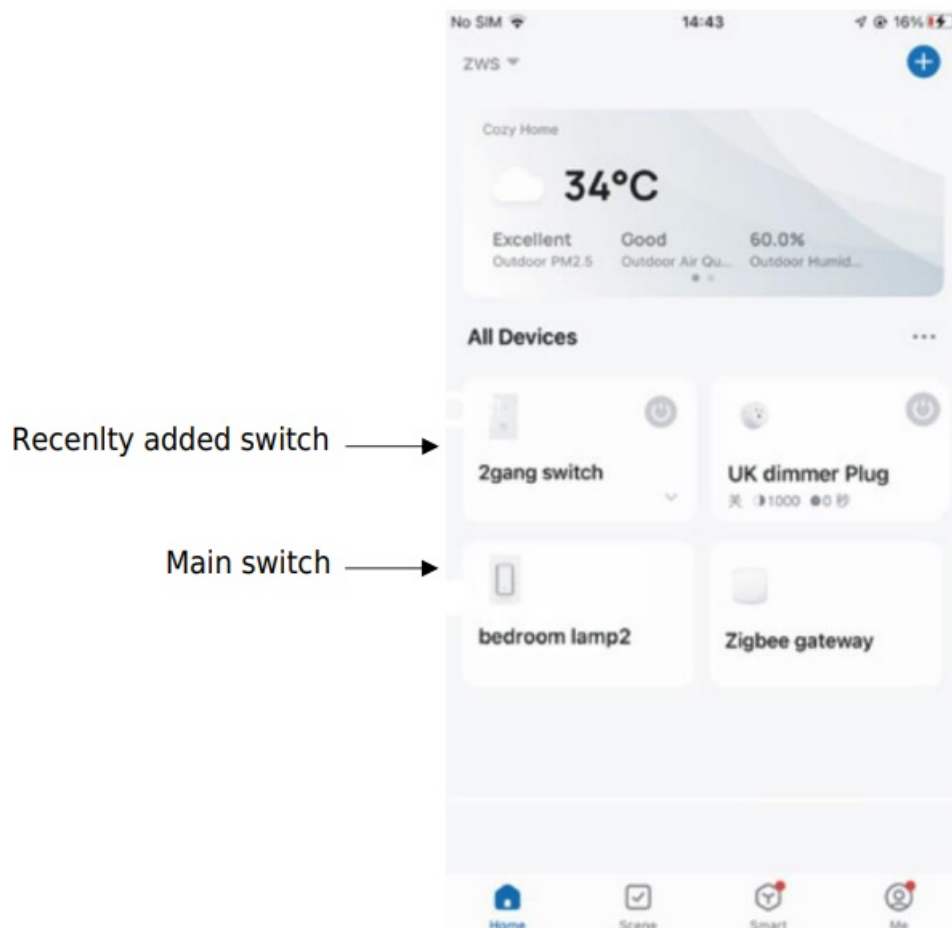
### Achieving Multi-Control Association (Only for N+L Wire)

**Note:** Please confirm you have successfully finished the link method above for adding this switch to your MOES App before the association.

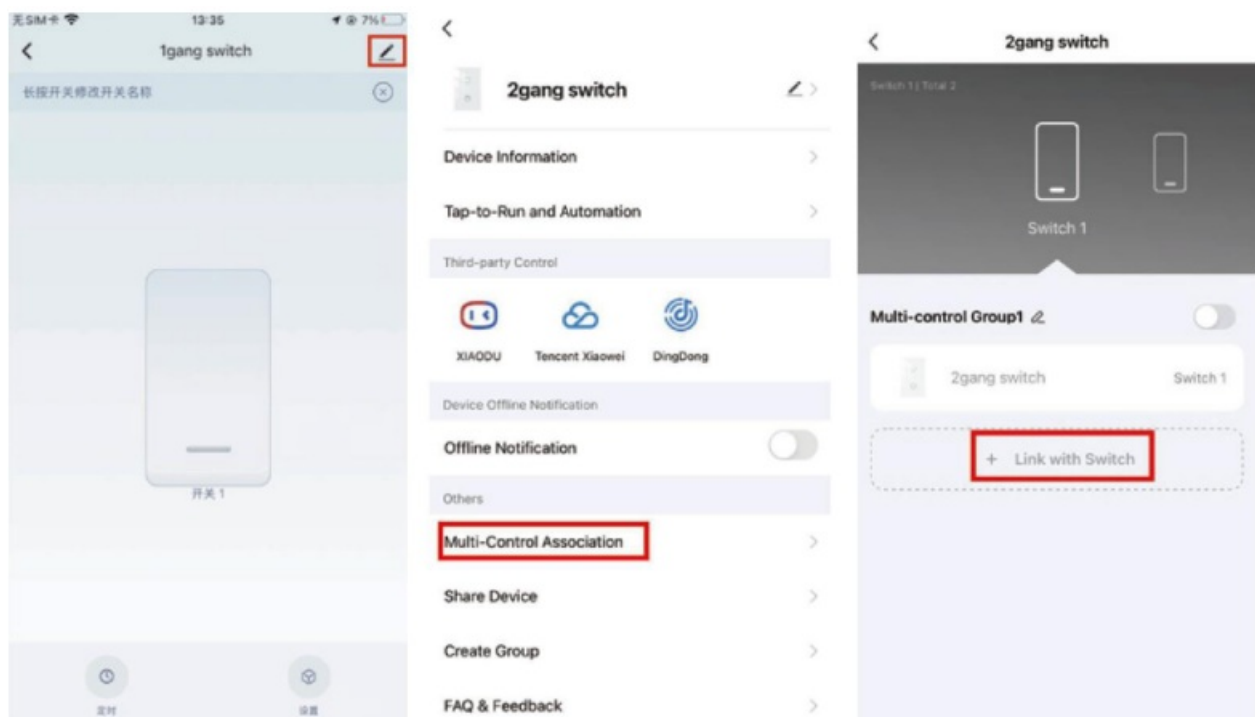
1. Add another smart switch to the same MOES App. (If there is a smart switch having been added before to the app, just go to next step.)

**Note:** If your switch requires a neutral wire, then there is no need to wire the new added switch to the light, only L and N are required for wiring. Then you can control 1 light with multiple switches in MOES App. If your switch doesn't require a neutral wire, you need to follow the wiring instructions to connect the L and light. At this point, you can control the lights simultaneously with multiple switches.

2. In the app, you will now see two devices. Click the main switch (as a one-gang switch) to proceed to the next operation.

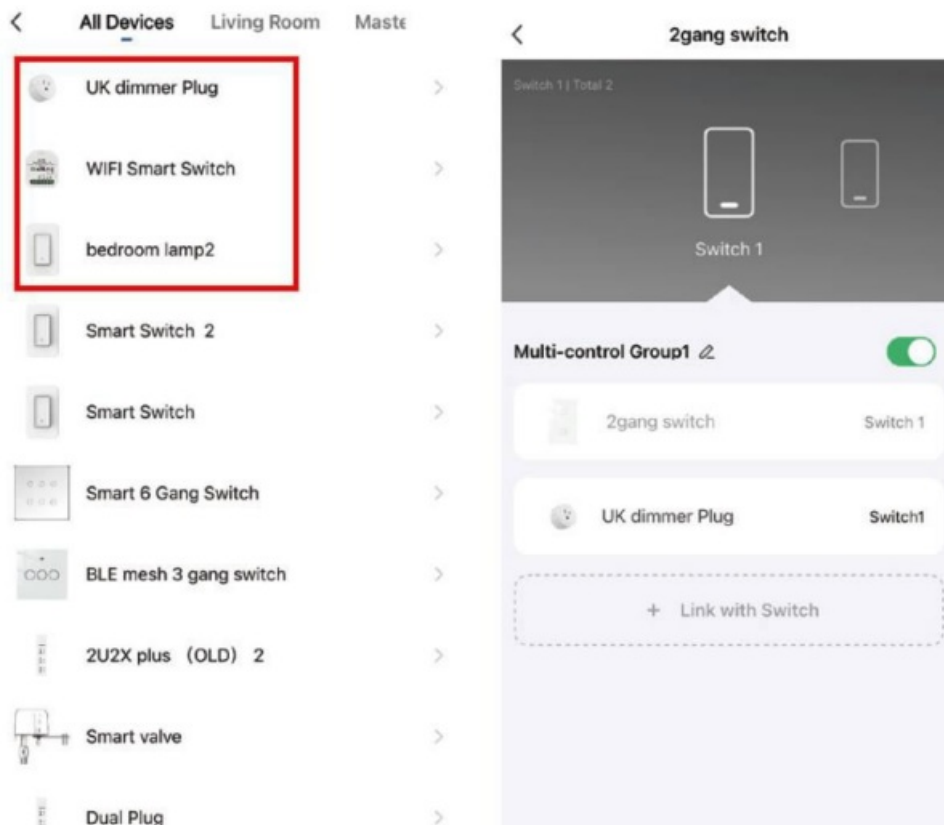


3. Click in  the upper right corner and choose “Multi-Control Association, and then click “+” in the right corner.

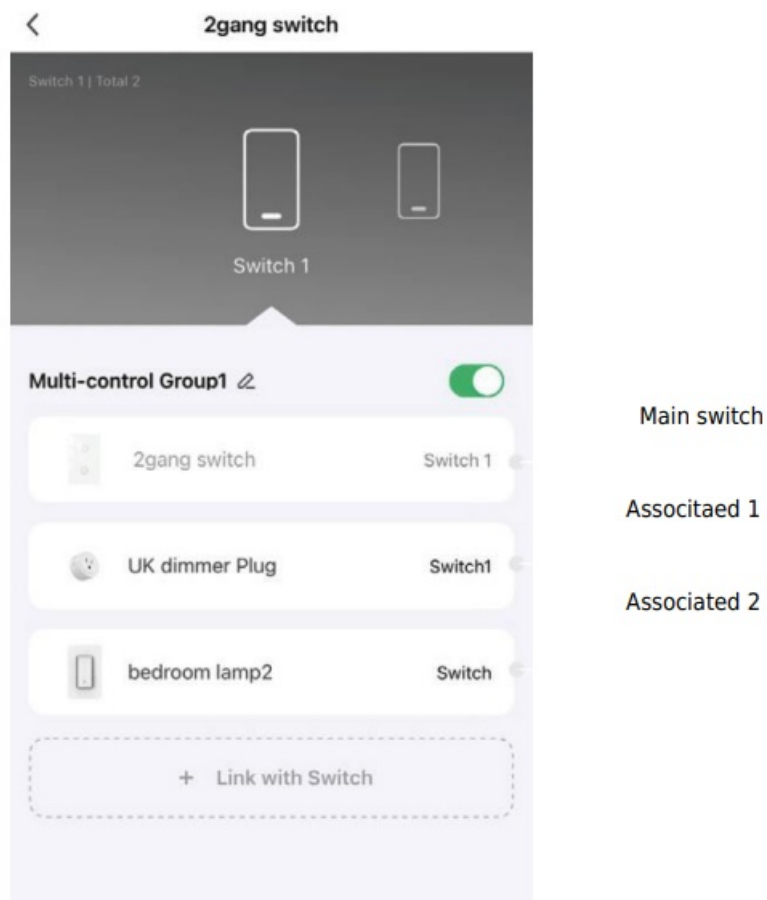


4. Choose the switch that you want to associate to and then choose the switch button that you want to control the same light. Then go back to previous page, you will see two items in the page, one is your main switch, the other is the one you associate just now.

**Note:** Please confirm the associated switch is enabled.



5. You can now control your light with two switches. Do not associate another button on the same switch for multi-control.
6. If you want to add another third or more smart switches to control your light, just repeat the steps above. And you will see the result as below when you associate another new switch.



## Smart Device Linked Voice Speaker



## Configure complete product networking in the App

Follow the prompts in the App to complete the networking configuration for the device.

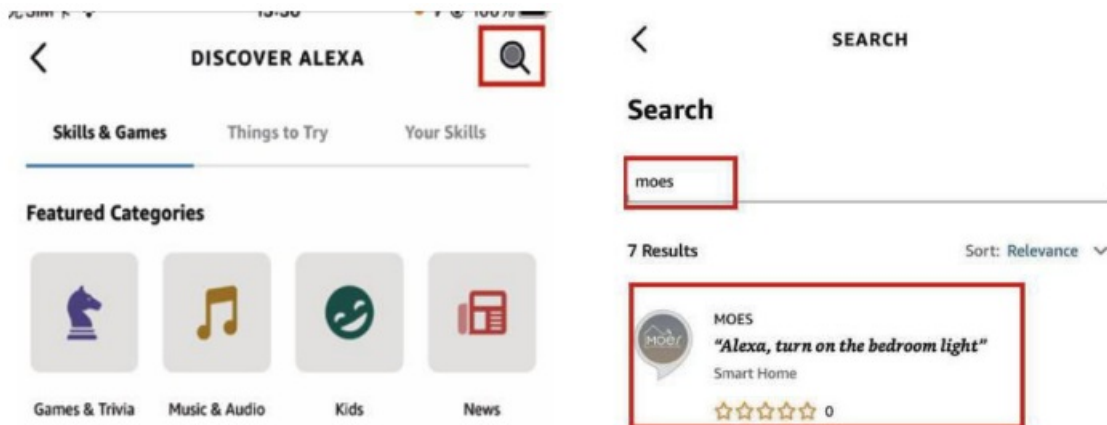
**Note:** In the App, rename the device to an easily identifiable English name, such as “Alexa” or “bed light.”

### How to Connect Smart Devices to Amazon Alexa

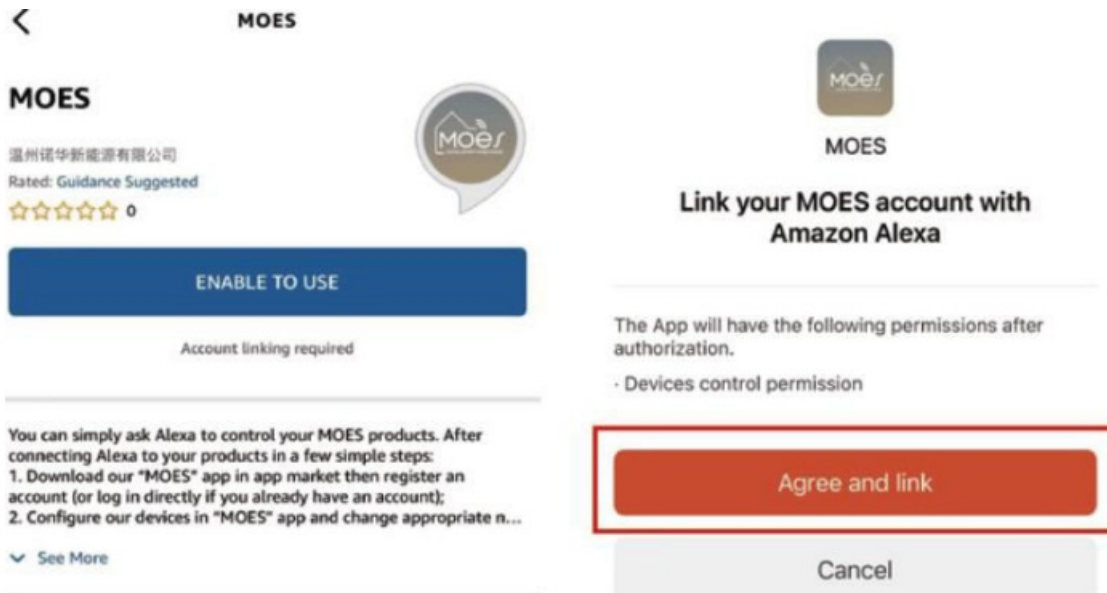
1. Launch the MOES App, sign in to your account, and ensure that the Smart Device is on the device list.
2. Minimize the MOES App, then open the Alexa App, sign in to your Alexa account, and confirm you have at least one Alexa smart speaker-controlled device installed, like Echo Dot, etc.

3. On the Home page, press  the button in the bottom right corner to show the APP Menu. Select  Skills & Games in the menu.


4. Click the search button in the upper right corner, enter “MOES” in the search box, and search.

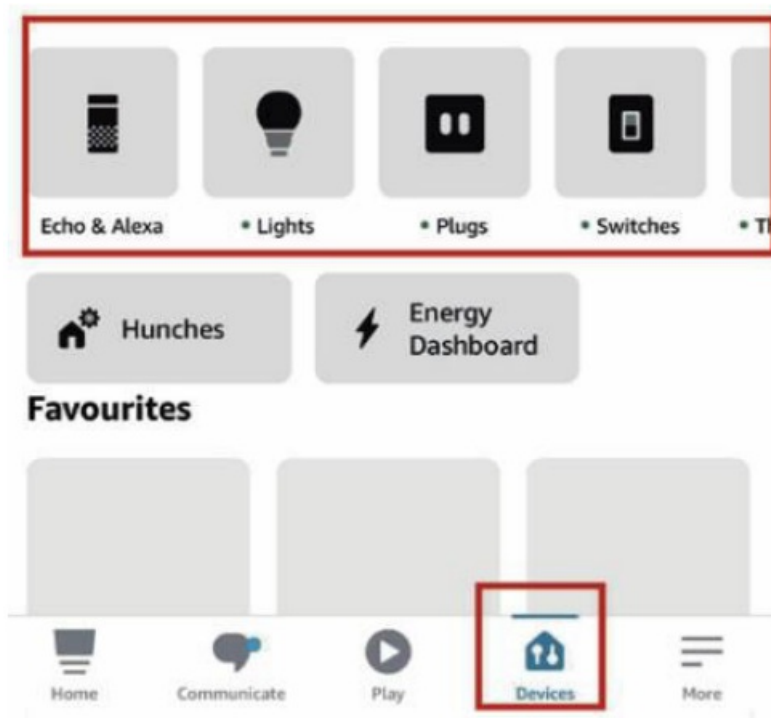


5. Enable MOES Smart Skill, then sign in to your MOES account to complete your account setup.



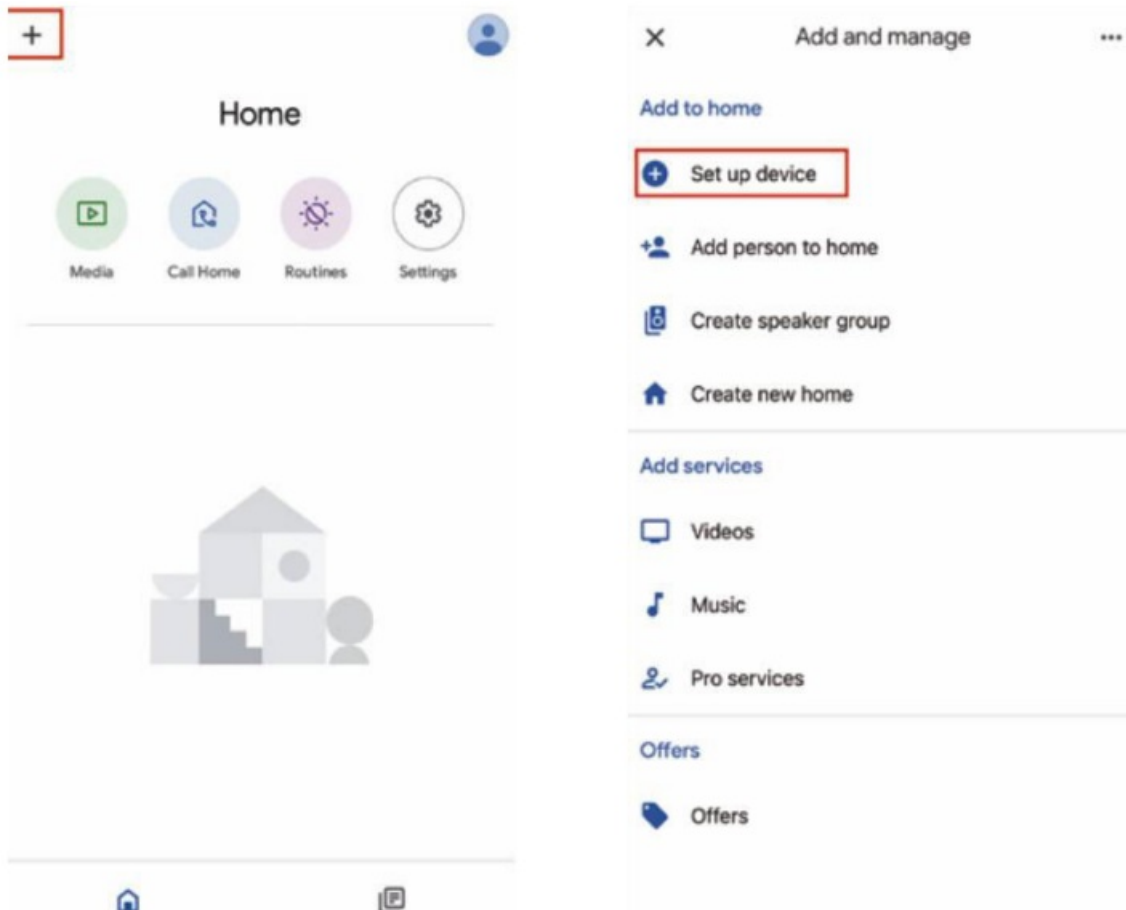
6. After successfully logging in, wait for Alexa to search for devices for 20 seconds. Once the device is

discovered, your MOES application is paired with Alexa. Clicking  will display all available devices in your APP, allowing you to control smart devices through Alexa.



## How to Connect Smart Device to Google Home

1. Launch the Google Home App and ensure the Google Home speaker is installed. If not, follow the Google Home speaker installation instructions to complete the installation.
2. Open the Google Home app, click on the plus sign in the top left corner to enter the “add and manage” page, then click on “Set up device.”



3. Enter “MOES” in the search box and search for it. Enable MOES smart skills, then log in to your MOES account to complete the account setup. After successfully logging in, wait 20 seconds for the devices to be searched.

Once the device is discovered, your MOES application is paired with Google Home, and all available smart devices are displayed on the homepage upon returning. Now you can use Google Home to control your smart devices.

## Warranty Conditions

A new product purchased in the Alza.cz sales network is guaranteed for 2 years. If you need repair or other services during the warranty period, contact the product seller directly, you must provide the original proof of purchase with the date of purchase. The following are considered to be a conflict with the warranty conditions, for which the claimed claim may not be recognized:

- Using the product for any purpose other than that for which the product is intended or failing to follow the instructions for maintenance, operation, and service of the product.
- Damage to the product by a natural disaster, the intervention of an unauthorized person or mechanically through the fault of the buyer (e.g., during transport, cleaning by inappropriate means, etc.).
- Natural wear and aging of consumables or components during use (such as batteries, etc.).
- Exposure to adverse external influences, such as sunlight and other radiation or electromagnetic fields, fluid intrusion, object intrusion, mains overvoltage, electrostatic discharge voltage (including lightning), faulty supply or input voltage and inappropriate polarity of this voltage, chemical processes such as used power supplies, etc.
- If anyone has made modifications, modifications, alterations to the design or adaptation to change or extend the functions of the product compared to the purchased design or use of non-original components.

## EU Declaration of Conformity


This equipment is in compliance with the essential requirements and other relevant provisions of EU directives.

## WEEE






This product must not be disposed of as normal household waste in accordance with the EU Directive on Waste Electrical and Electronic Equipment (WEEE – 2012/19 / EU). Instead, it shall be returned to the place of purchase or handed over to a public collection point for the recyclable waste. By ensuring this product is disposed of correctly, you will help prevent potential negative consequences for the environment and human health, which could otherwise be caused by inappropriate waste handling of this product. Contact your local authority or the nearest collection point for further details. Improper disposal of this type of waste may result in fines in accordance with national regulations.

---

## Documents / Resources

 <p><b>ZigBee 3.0 Smart Switch</b></p> <p><small>Smart Remote • 100% compatible remote • 100% compatible remote • 100% compatible remote • 100% compatible remote</small></p>	<p><a href="#">Moes ZS-SR ZigBee 3.0 Smart Switch</a> [pdf] User Manual</p> <p>ZS-SR ZigBee 3.0 Smart Switch, ZS-SR, ZigBee 3.0 Smart Switch, 3.0 Smart Switch, Smart Switch, Switch</p>
--	--

## References

-  [alza.at](https://alza.at)
-  [Alza | Alza.co.uk](https://alza.co.uk)
-  [alza.de](https://alza.de)
-  [alza.hu](https://alza.hu)
-  [alza.sk](https://alza.sk)
- [User Manual](#)