

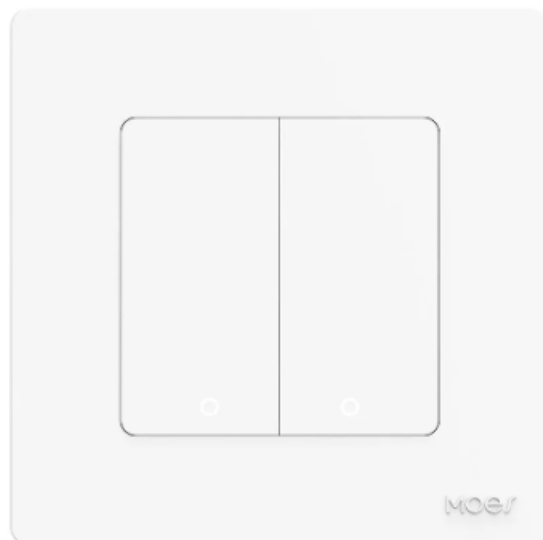
Moes ZS-SR-EU1-WH-MS ZigBee 3.0 Smart Switch Instruction Manual

[Home](#) » [MOES](#) » Moes ZS-SR-EU1-WH-MS ZigBee 3.0 Smart Switch Instruction Manual 

MOES[®]

HOME, SMART MOES HOME

Powered by





<https://drive.google.com/drive/folders/1cFp6k4GgSHSXGtlddBW5vC9FJb6356UO?usp=sharing>



<https://pan.baidu.com/s/11Fb0gX8trDEEt0Rtm6rpVg?pwd=7ibq>

Contents

- 1 Product Description
- 2 Safety Information
- 3 Specification
- 4 Installation
- 5 Preparation for use
- 6 Steps for connecting the APP to the device
- 7 How to achieve multi-control association (only for N+L wire)
- 8 Enter MOES Skill in Alexa APP
- 9 SERVICE
- 10 RECYCLING INFORMATION
- 11 WARRANTY CARD
- 12 Documents / Resources
 - 12.1 References
- 13 Related Posts

Product Description

This new designed smart switch with 1/2/3/4 gang optional is designed with ZigBee protocol to replace traditional switches with a variety of ways to control. One switch for two wirings optional (N+L wire / only L wire) and ZigBee hub is required for normal use. Now one new smart feature as multi-control association (only for N+L wire) to other smart switches is added into MOES App, and all controlling modes work without any interference. Its design is suitable for different decoration styles with its best value.

Safety Information

Risk of Electric Shock: Electricity can cause personal injury and property damage if handled improperly. If you are not sure about any part of these instructions, please seek professional assistance from a qualified electrician.

Specification

Product Name: Smart Switch

Protocol: Zigbee3.0

Max Current:10A

Working Voltage: AC100V-240V

Working Temperature: -10~65°C

Rated Power (Resistive load): <2000W

Support system: Android / iOS

Warnings:

Turn off the power at the circuit breaker and test that power is off before wiring.

Installation

Note:

- Make sure that the power at the circuit breaker is off before wiring.
- Two versions available and optional:Neutral wire required and no neutral needed in your switch boxes to operate correctly. Please make the correct wiring according to the switch you purchased.
- If you buy a switch version that requires a neutral wire,please confirm your wall box contains a Neutral Wire(typically white).If the wall box don't have a Neutral Wire,please try another location at your home or call a professional electrician to install the switch.
- The wire colors indicated in this manual are the usual colors and may differ in some houses.
- Ensure the wire conductors are securely fastened to each wire.
- Ensure the Wi-Fi signal is steady and normally working before wiring and your mobile and Zigbee gateway hub are under the same 2.4GHz WiFi network.
- If you don't have any wiring experience,please call a professional electrician.

Step 1

- Turn off the circuit breaker and use the electrical tester to test the power.
- Ensure the circuit breaker is off before wiring.

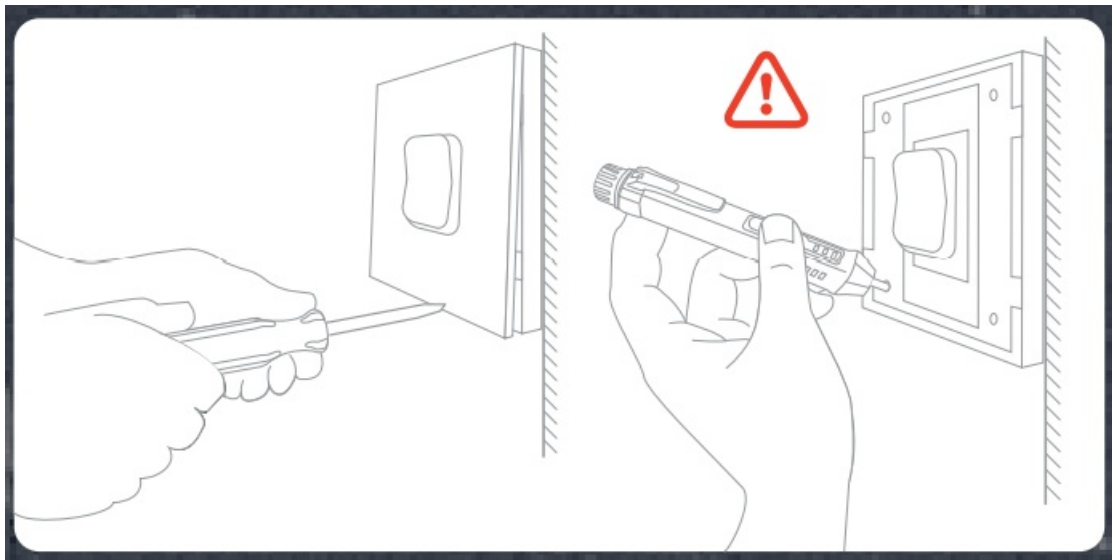


Attention:

Please disconnect the power supply before installing or removing the device for avoiding irreversible damage on the device from the electric current or some unpredictable problems such as lamp flashing.

Step 2


- Remove the old switch



Step 3

- Remove the switch and pull it away from the wall.

Identify Line/Load Wire (Note: The color of your wire may be different from the color shown on the manual.)

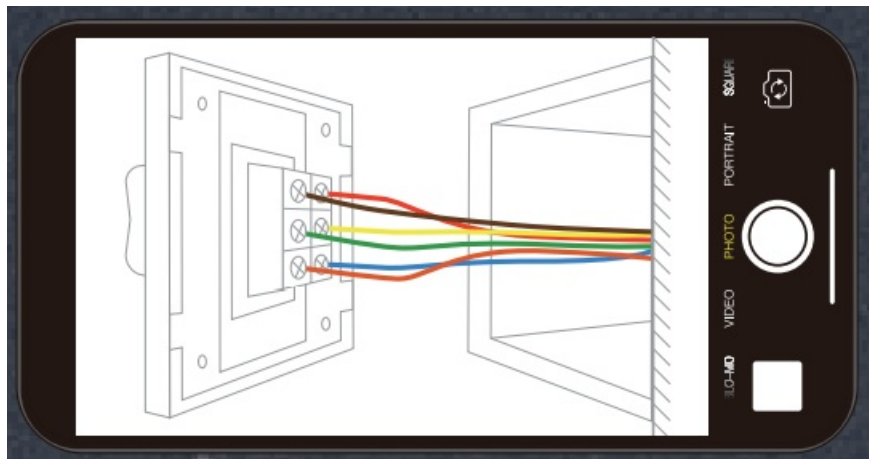
 Verify power is off

We recommend you remove the faceplate from the old switch and use an electrical tester to test all wires connected to the switch to ensure there is no voltage in the circuit.

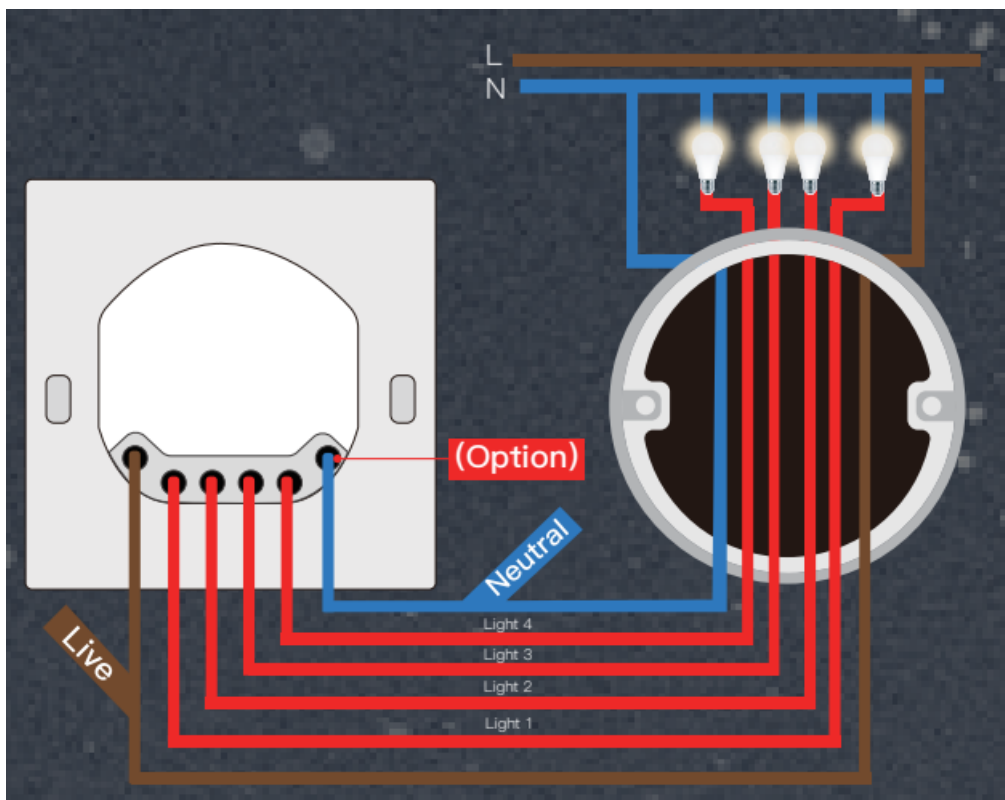
You may need to turn off more than one circuit breaker.

Step 4

Take pictures of the wiring

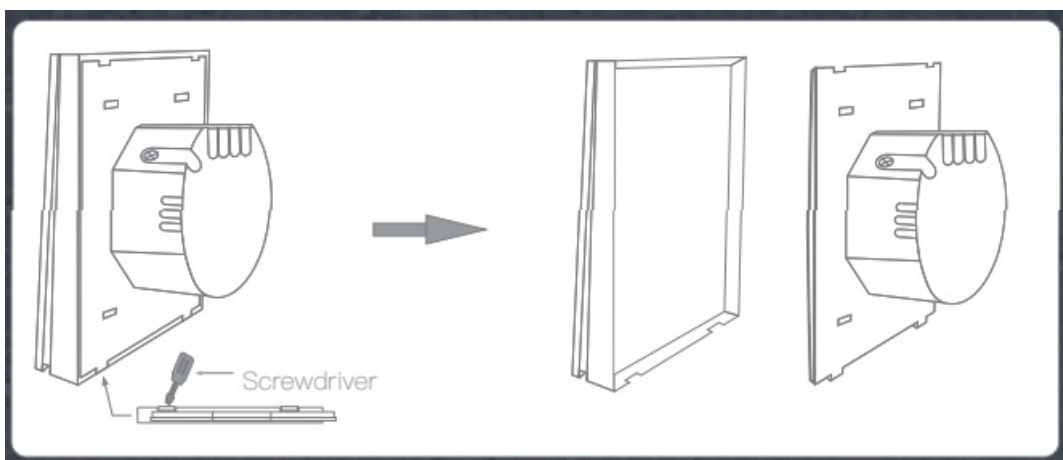


- Follow the wiring diagram to connect the switch wires to the wires in the wall box with the wire conductors.

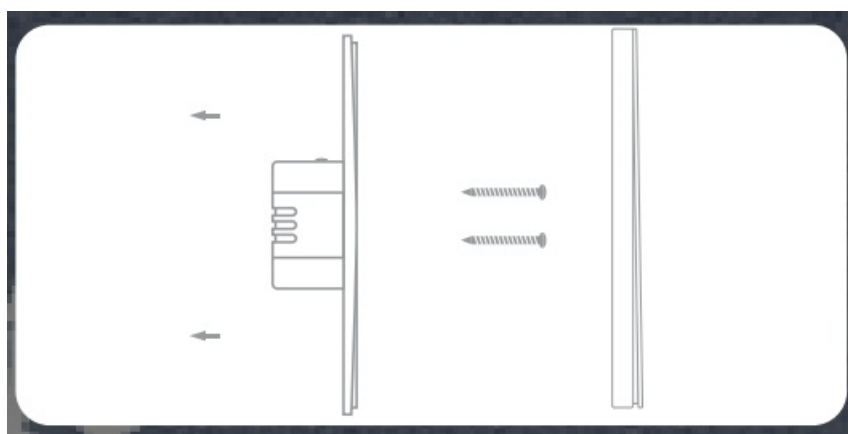


Step 5

- Open the switch panel from the bottom of the switch with a screwdriver



- Mount the switch with the provided screws and snap the wall plate on it.



Step 6

Turn the power back on at the circuit breaker and then switch the light on.

Preparation for use

1. Download MOES App on App store or scan the QR code

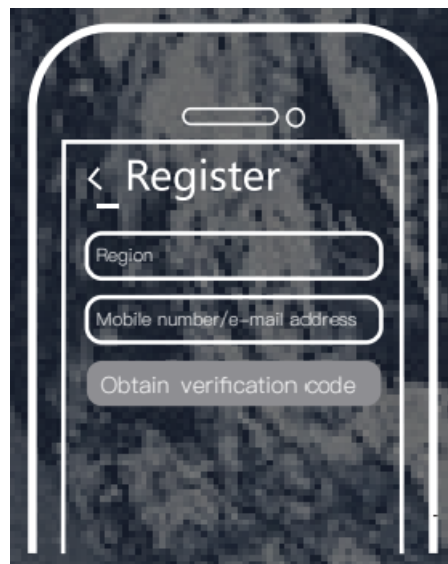


<https://a.smart321.com/moeswz>

MOES APP is upgraded as much more compatibility than Tuya Smart/Smart Life APP, functional well for scene controlled by Siri, widget and scene recommendations as the fully new customized service.

(Note: Tuya Smart/Smart Life APP still works, but MOES APP is highly recommended)

2. Registration or Log in



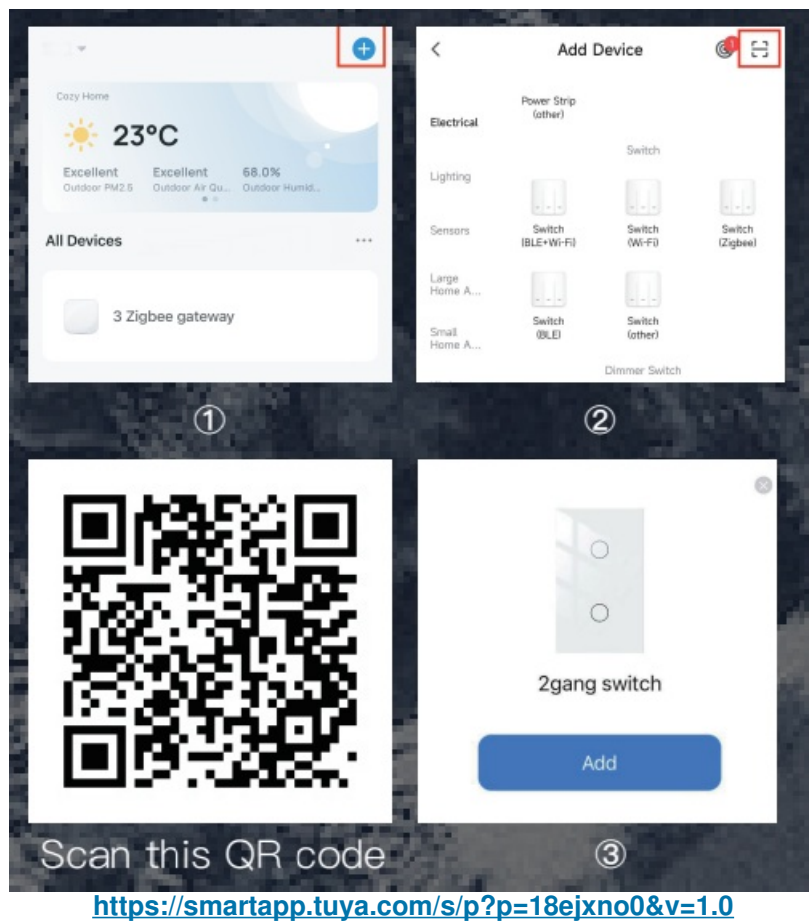
Enter the Register/Login interface; tap “Register” to create an account by entering your phone number to get verification code and “Set password”. Choose “Log in” if you already have a MOES account.

Steps for connecting the APP to the device

Ensure the device is within the effective signal coverage of your smart ZigBee gateway for successful connection into the ZigBee gateway in MOES APP.

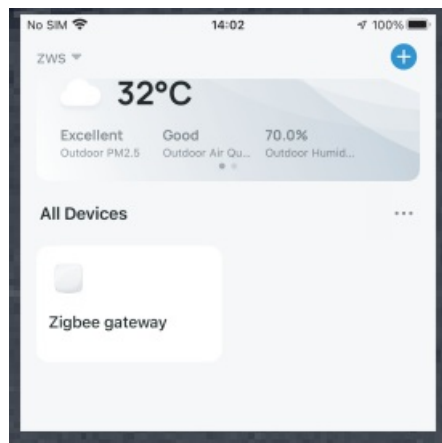
Method One:

Scan the QR code to configure the network guide. 1. Make sure your MOES APP has successfully connected to a Zigbee gateway.

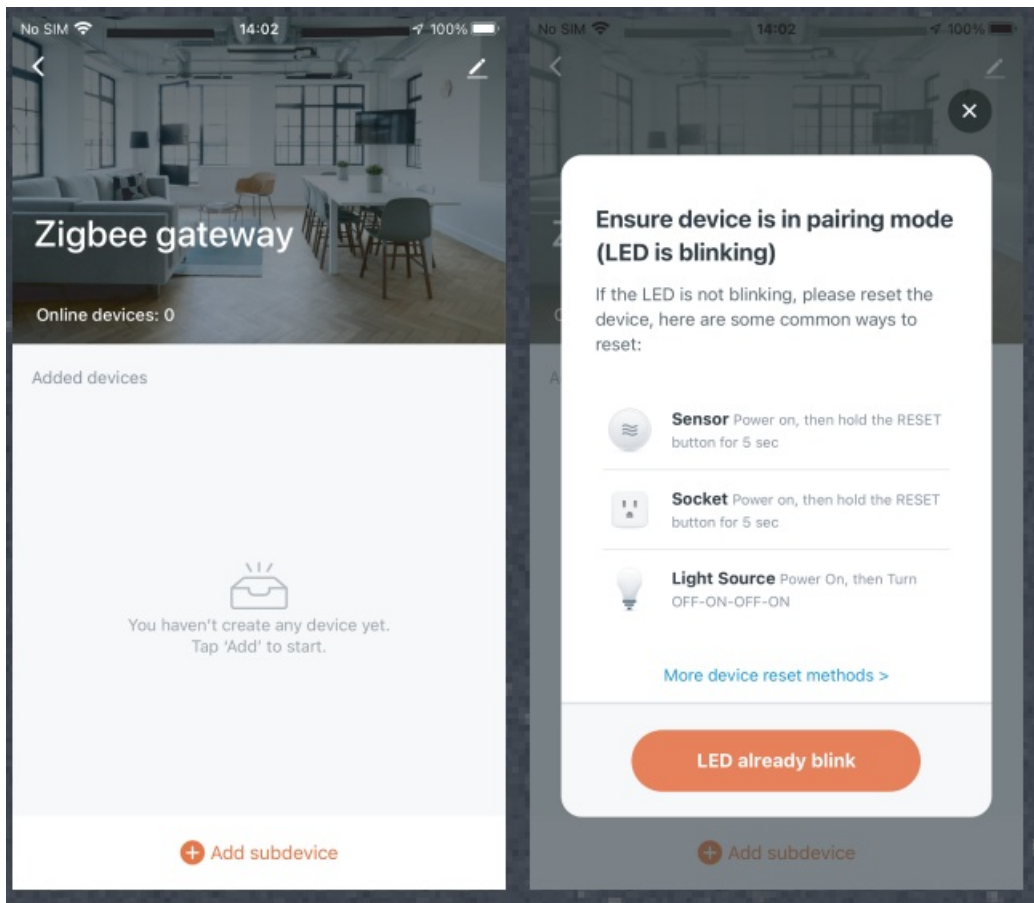


Method Two

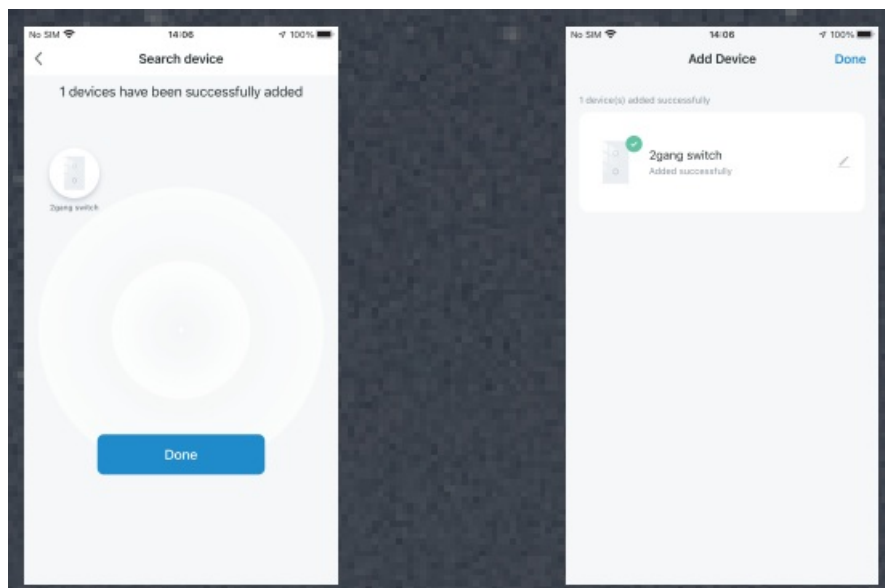
1. Make sure your MOES APP has successfully connected to a Zigbee gateway.



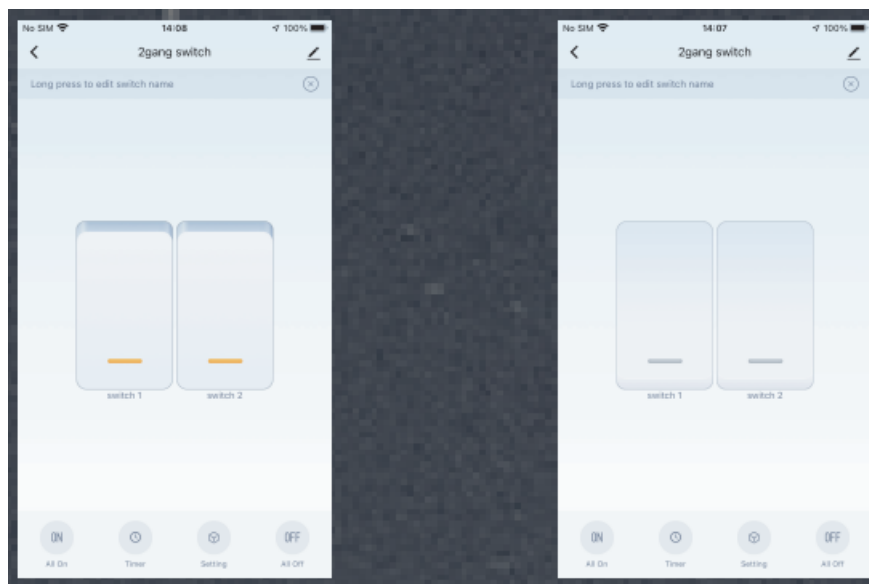
2. Press and hold the button for about 7 seconds, until the indicator on the switch flashes fast after 3 seconds. Repair is successful.
3. Enter the gateway. Please follow the picture below to finish as "Add subdevice" → LED already blink, and the connecting will take about 10-120 seconds to complete depending on your network condition.



4. Add the device successfully, you can edit the name of the device to enter the device page by click "Done".



5. Click "Done" to enter the device page to enjoy your smart life with home automation.



How to Reset/Re-pair ZigBee code

Press and hold the button for about 7 seconds, until the indicator on the switch flash fast after 3 seconds. Reset/Re-pair is successful.

How to achieve multi-control association (only for N+L wire)

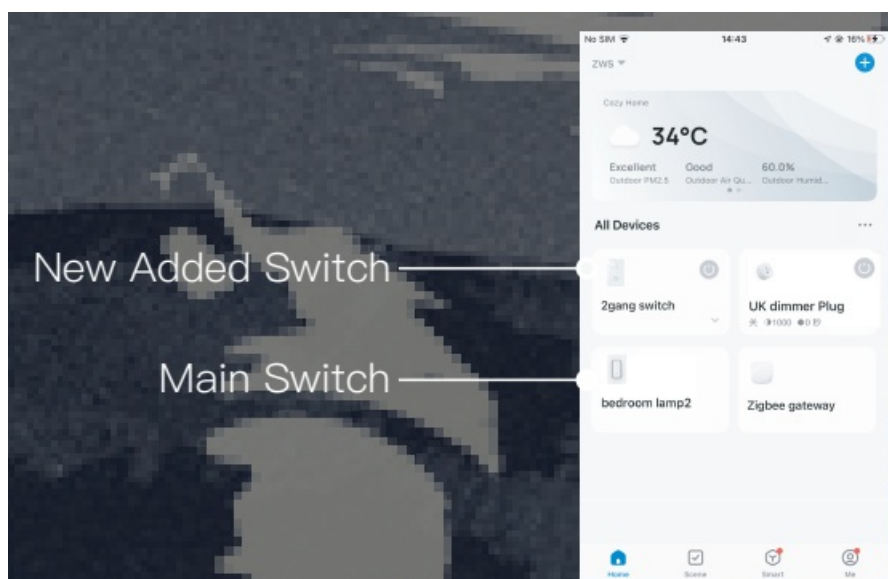
Note: Please confirm you have successfully finished the link method above for adding this switch to your MOES App before the association.

1. Add another smart switch to the same MOES App. (If there is a smart switch having been added before to the app, just go to next step.)

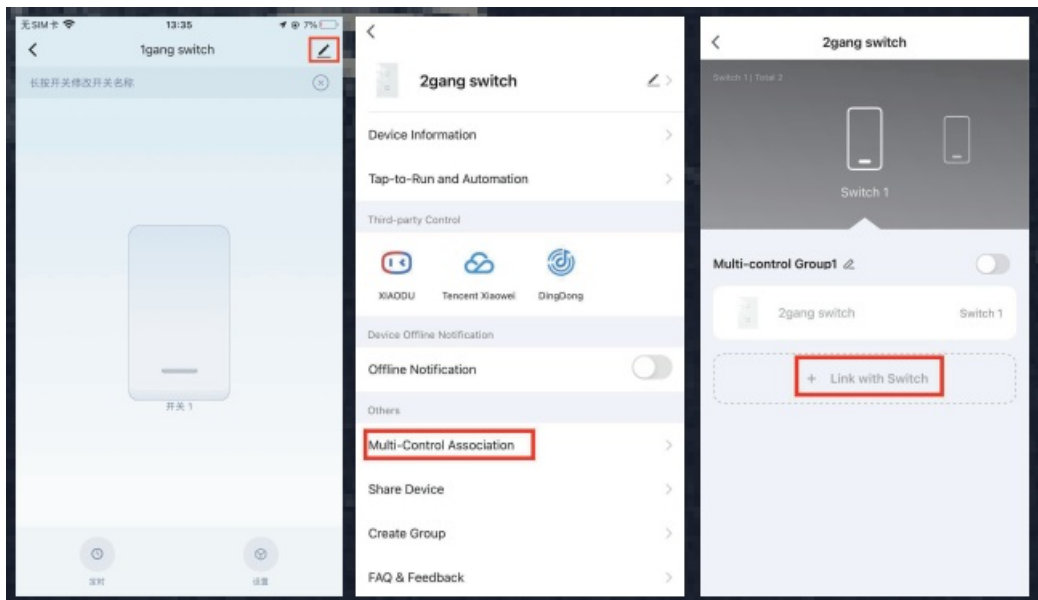
Note: If your switch requires a neutral wire, then there is no need to wire the new added switch to the light, only L and N are required for wiring. Then you can control 1 light with multiple switches in MOES App.

If your switch doesn't require a neutral wire, you need to follow the wiring instructions to connect the L and light. At this point, you can control the lights simultaneously with multiple switches.

2. Then you will see two devices in the app and click the main switch (as one gang switch as below) by entering into the next operation.

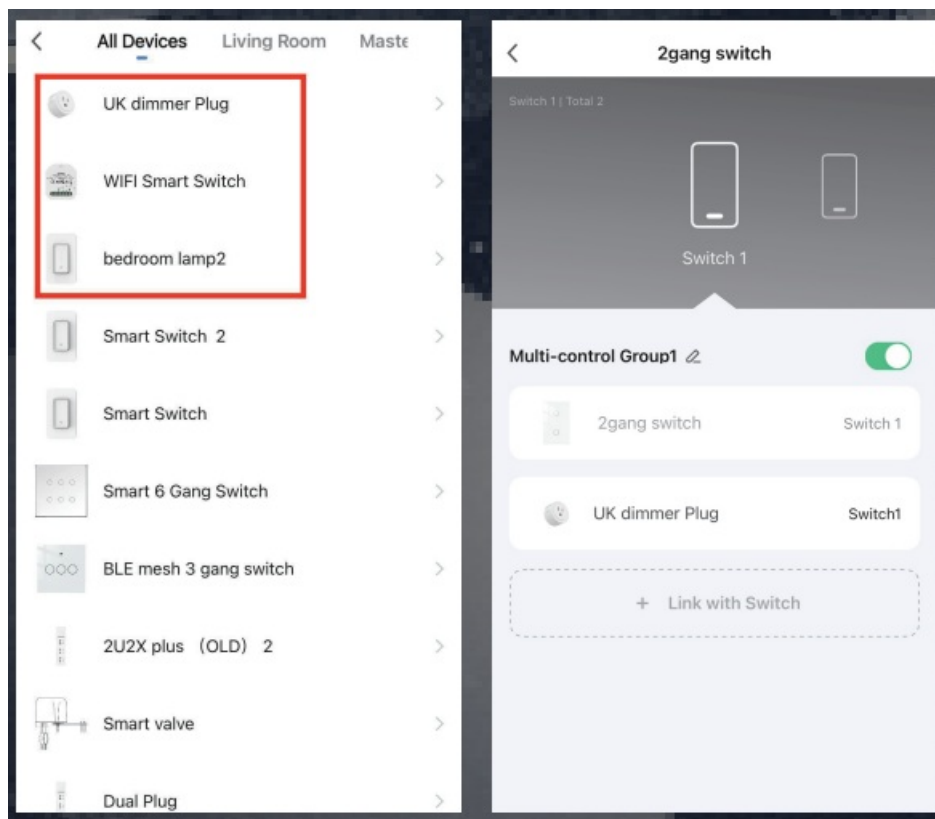


3. Click in the upper right corner and choose "Multi-Control Association", and then click "+" in the right corner.

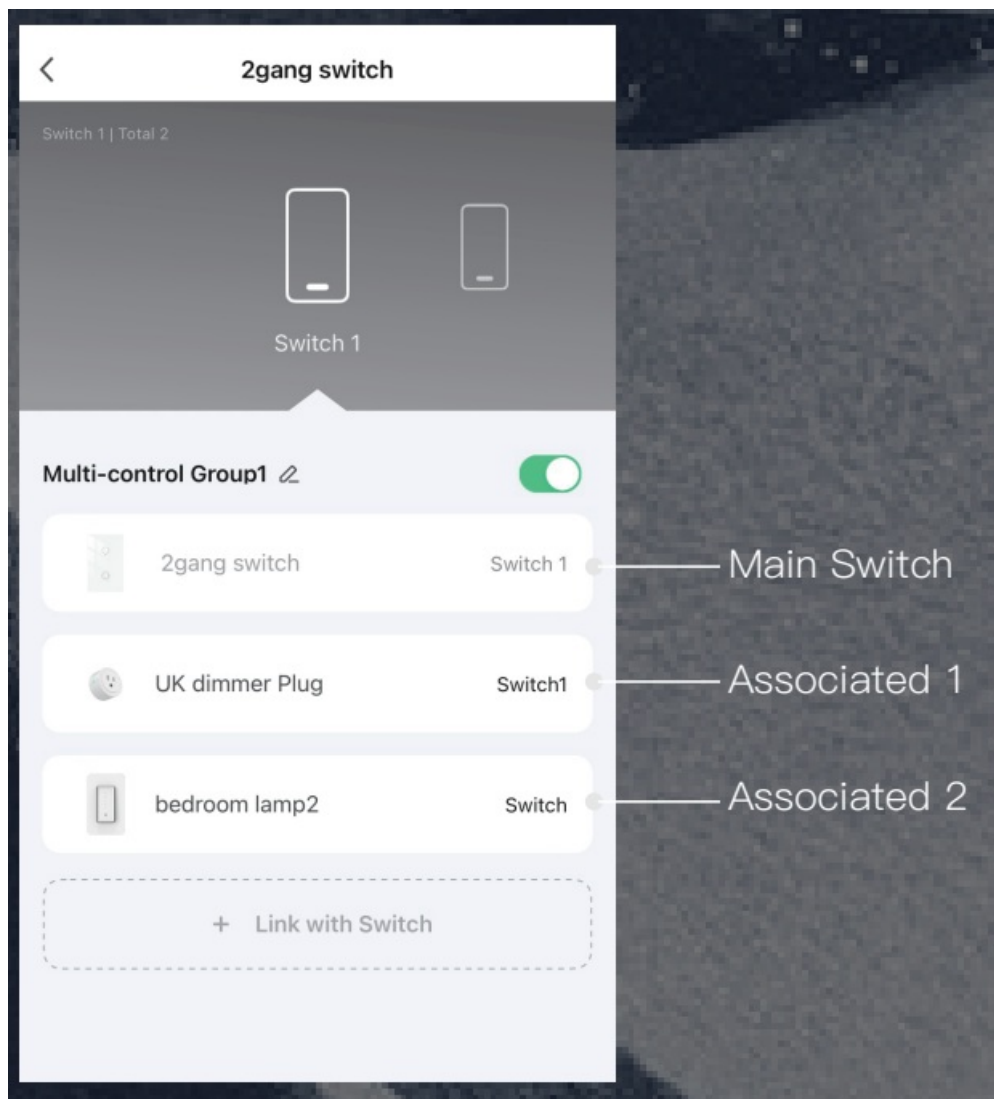


4. Choose the switch that you want to associate to and then choose the switch button that you want to control the same light. Then go back to previous page, you will see two items in the page, one is your main switch, the other is the one you associate just now.

Note: Please confirm the associated switch is enabled.



5. Now you are able to control your light with two switches.
Do not associate another button in the same switch for multi-control.
6. If you want to add another third or more smart switches to control your light, just repeat the steps above. And you will see the result as below when you associate another new switch.



Enter MOES Skill in Alexa APP

1. Complete product networking configuration in the App

Complete the device's networking configuration according to the prompts in the App.

Note: In the App, change the name of the device to an easily identifiable name such as Alexa; names are usually in English, such as "bed light".

2. Configure the Amazon Echo device

(If you have already configured Amazon Echo, you can skip this step. The following instructions are based on the iOS client.)

① Make sure you Amazon Echo device is powered on and connected to a Wi-Fi network.

② Open the Alexa APP on your phone and log in

③ tap on the menu in the upper left corner of the

Home page, select "Settings" and tap "Set Up A New Device" to set up the Amazon Echo.

④ Choose your Amazon Echo device type and language for connecting.

⑤ Press and hold the small dot on the device until the light turns yellow.

⑥ Click "Continue" to connect to the hotspot, connect to the Amazon Echo hotspot, and return to the APP page.

⑦ Click "Continue" to find and connect to your home Wi-Fi network.

⑧ Amazon Echo will take a few minutes to try to connect to the network.

⑨ After the network connection is successful, tap "Continue". An introduction video will appear After the video

ends tap “Continue” to jump to the Alexa Home page.

⑩ You have now completed the Amazon Echo’s configuration process

3. Key step —— Link Skill

① Tap on “Skills” in the Alexa App menu.

② Then search for “App Name”. Tap “Enable” to enable the Skill.

③ Enter the App account and password, then tap “Link Now” to link your App account to enable the Skill. Now you can start your smart home journey

4. Common commands

Control the device via voice commands, now you can control your smart device with Echo. You can control your device (such as your bedroom light) with the following commands:

- “Alexa, turn on <device name>”
- “Alexa, turn off <device name>”

SERVICE

Thank you for your trust and support to our products, we will provide you with a two-year worry-free after-sales service (freight is not included), please do not alter this warranty service card, to safeguard your legitimate rights and interests. If you need service or have any questions, please consult the distributor or contact us. Product quality problems occur within 24 months from the date of receipt, please prepare the product and the packaging, applying for after-sales maintenance in the site or store where you purchase; If the product is damaged due to personal reasons, a certain amount of maintenance fee shall be charged for repair. We have the right to refuse to provide warranty service if:

1. Products with damaged appearance, missing LOGO or beyond the service term
2. Products that are disassembled, injured, privately repaired, modified or have missing parts
3. The circuit is burned or the data cable or power interface is damaged
4. Products damaged by foreign matter intrusion (including but not limited to various forms of fluid, sand, dust, soot, etc.)

RECYCLING INFORMATION



All products marked with the symbol for separate collection of waste electrical and electronic equipment (WEEE Directive 2012/19 / EU) must be disposed of separately from unsorted municipal waste. To protect your health and the environment, this equipment must be disposed of at designated collection points for electrical and electronic equipment designated by the government or local authorities. Correct disposal and recycling will help prevent potential negative consequences for the environment and human health. To find out where these collection points are and how they work, contact the installer or your local authority.

WARRANTY CARD

Product Information

Product Name

Product Type

Purchase date

Warranty Period

Dealer Information

Customer's Name
Customer Phone
Customer Address

Maintenance Records







Failure date	Cause Of Issue	Fault Content	Principal

Thank you for your support and purchase at we Moes,we are always here for your complete satisfaction,just feel free to share your great shopping experience with us.



If you have any other need,please do not hesitate to contact us first,we will try to meet your demand.

FoLow US

	@moessmart
	@moes_smart
	@moes_smart
	MOES.Official
	@moes_smart
	www.moes.net



EVATOST CONSULTING LTD

Address: Suite 11, First Floor, Moy Road
Business Centre, Taffs Well, Cardiff, Wales,
CF15 7QR

Tel: +44-292-1680945

Email: contact@evatmaster.com



AMZLAB GmbH

Laubenhof 23, 45326 Essen

Made In China



Manufacturer:

WENZHOU NOVA NEW ENERGYCO.,LTD



Address: Power Science and Technology
Innovation Center, NO.238, Wei 11 Road,
Yueqing Economic Development Zone,
Yueqing, Zhejiang, China
Tel: +86-577-57186815
After-sale Service: service@moeshouse.com

Documents / Resources



[Moes ZS-SR-EU1-WH-MS ZigBee 3.0 Smart Switch](#) [pdf] Instruction Manual
ZS-SR-EU1-WH-MS, ZS-SR, ZS-SR-EU1-WH-MS ZigBee 3.0 Smart Switch, ZS-SR-EU1-WH-MS, ZigBee 3.0 Smart Switch, Smart Switch, Switch

References

-  [Der Domainname light.at steht zum Verkauf.](#)
-  [MOES Smart WiFi ZigBee Smart 2/3 Way Switch Socket Thermostat Sensor](#)