

Moes ZigBee 3.0 Smart Socket User Manual



FR



EU



UK

Contents

1 ZigBee 3.0 Smart Socket

1.1 User Manual

1.1.1 Product Description

1.1.2 Safety Notice

1.1.3 Specifications

1.1.4 Safety Precaution

1.1.5 Installation Instructions

1.1.5.1 Step 1

1.1.5.2 Step 2

1.1.5.3 Step 3

1.1.5.4 Step 4

1.1.5.5 Step 5

1.1.5.6 Step 6 – Preparing to Install

Wiring

1.1.5.7 Step 7

1.1.6 Getting Ready for Use

1.1.6.1 1. Downloading the MOES App

1.1.6.2 2. Account Registration or Login:

1.1.7 Connecting the APP to the Device

1.1.7.1 Method One

1.1.7.2 Method Two

1.1.7.3 Reset/Re-pair ZigBee Code

1.1.8 Setting Up MOES Skill with Alexa

1.1.9 Warranty Conditions

1.1.10 EU Declaration of Conformity

1.1.11 WEEE

2 Documents / Resources

2.1 References

3 Related Posts

ZigBee 3.0 Smart Socket

User Manual

Dear customer,

Thank you for purchasing our product. Please read the following instructions carefully before first use and keep this user manual for future reference. Pay particular attention to the safety instructions. If you have any questions or comments about the device, please contact the customer line.



www.alza.co.uk/kontakt



+44 (0)203 514 4411

Importer Alza.cz a.s., Jankovcova 1522/53, Holesovice, 170 00 Praha 7, www.alza.cz

Product Description

Introducing our newly redesigned wall socket, equipped with ZigBee protocol to seamlessly replace conventional outlets. The accompanying app now features an enhanced pairing mode compatible with Bluetooth, panel indicator mode, and relay status settings (including power on, power off, and power off memory). Additional

functionalities include a switch log, child lock, current statistics, and overcurrent protection. Accessible through the Smart Life/Tuya App, all control modes operate smoothly without interference. Its versatile design complements various decoration styles, making it an excellent investment with great value for money.

Safety Notice

Electric Shock Hazard: Mishandling electricity can result in personal injury and property damage. If you have any uncertainties about these instructions, it is recommended to seek professional assistance from a qualified electrician.

Specifications

Model	ZK-EU (FR/UK)
Power Supply	95 – 240 V, AC, 50 – 60 Hz
Wireless Protocol	ZigBee
Maximum Current	16 A
Maximum Load Power	3000 W

Safety Precaution

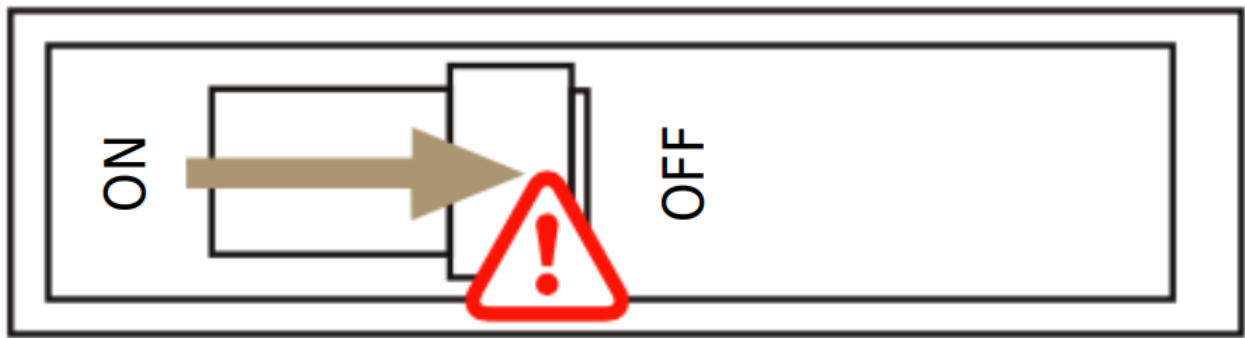
Before wiring, ensure to turn off the power at the circuit breaker and verify that the power is completely off.

Installation Instructions

1. Ensure the power at the circuit breaker is switched off before commencing the wiring process.
2. Verify the presence of a Neutral Wire in the wall box. If absent, consider selecting an alternate location within your home. Alternatively, seek the assistance of a professional electrician for proper installation.
3. Please note that wire colors specified in this manual are typical and may vary in certain households.
4. Securely fasten wire conductors to each corresponding wire.
5. Prior to wiring, confirm a stable Wi-Fi signal and ensure normal operation. Ensure that your mobile device and Zigbee gateway hub are connected to the same 2.4 GHz Wi-Fi network.
6. If you lack experience in wiring, it is recommended to consult a professional electrician for assistance.

Step 1

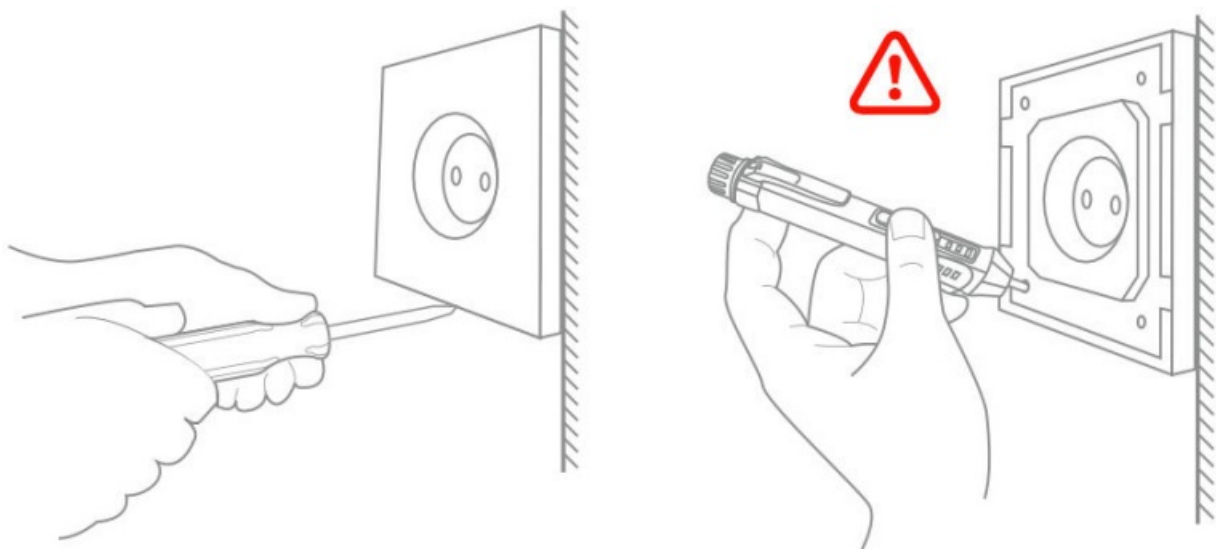
- Turn off the circuit breaker and use an electrical tester to confirm the power is off.
- Ensure the circuit breaker remains off during the wiring process.



Attention: Disconnect the power supply before installing or removing the device to prevent irreversible damage or unforeseen issues such as lamp flashing due to electric current.

Step 2

Remove the old switch.

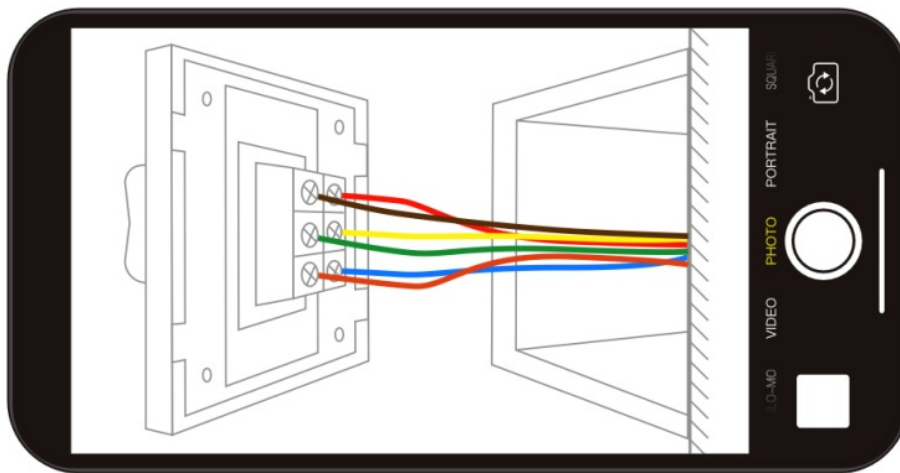


Step 3

- Remove the switch and pull it away from the wall.
- Identify Line/Load Wire (Note: The wire color may differ from the manual's illustration).
- Verify power is off by using an electrical tester on all connected wires. Remove the faceplate and test each wire to ensure no voltage is present in the circuit. You may need to turn off more than one circuit breaker.

Step 4

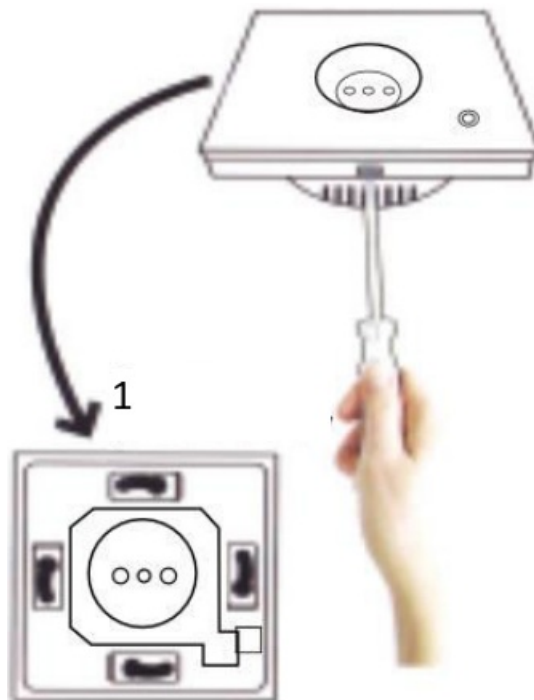
Take pictures of the wiring and follow the wiring diagram to connect the switch wires to the wall box wires with corresponding wire conductors.



Step 5

Remove the panel using a screwdriver.

(Do not install with electricity power on)

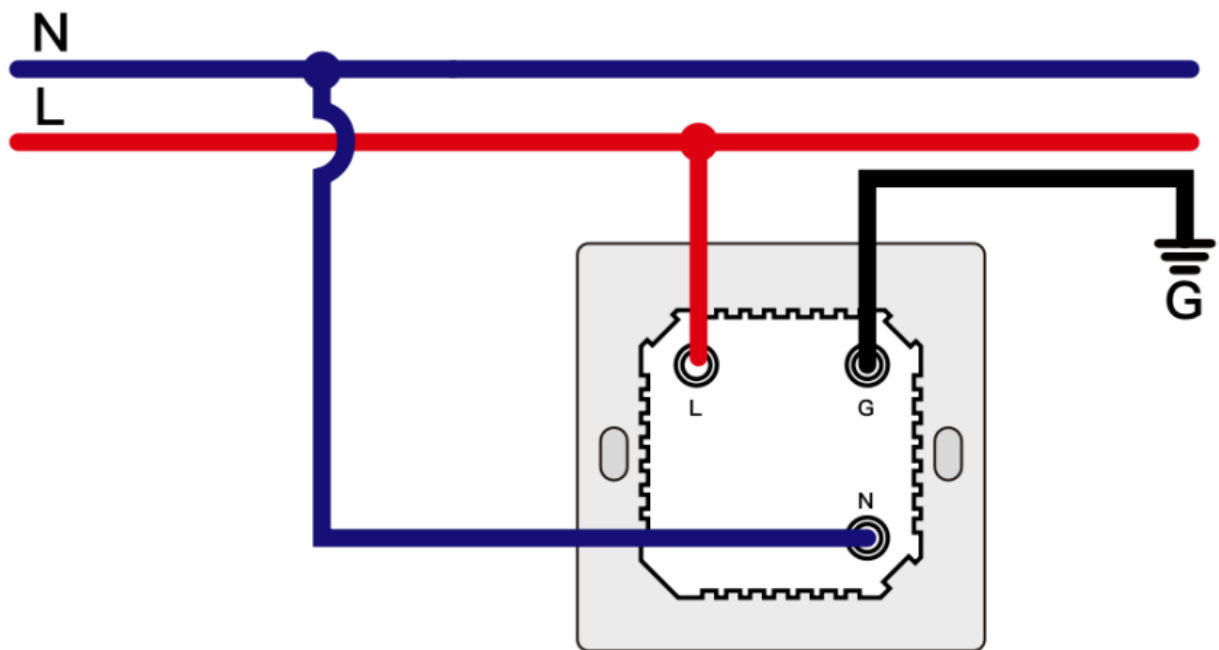


1. See the picture below

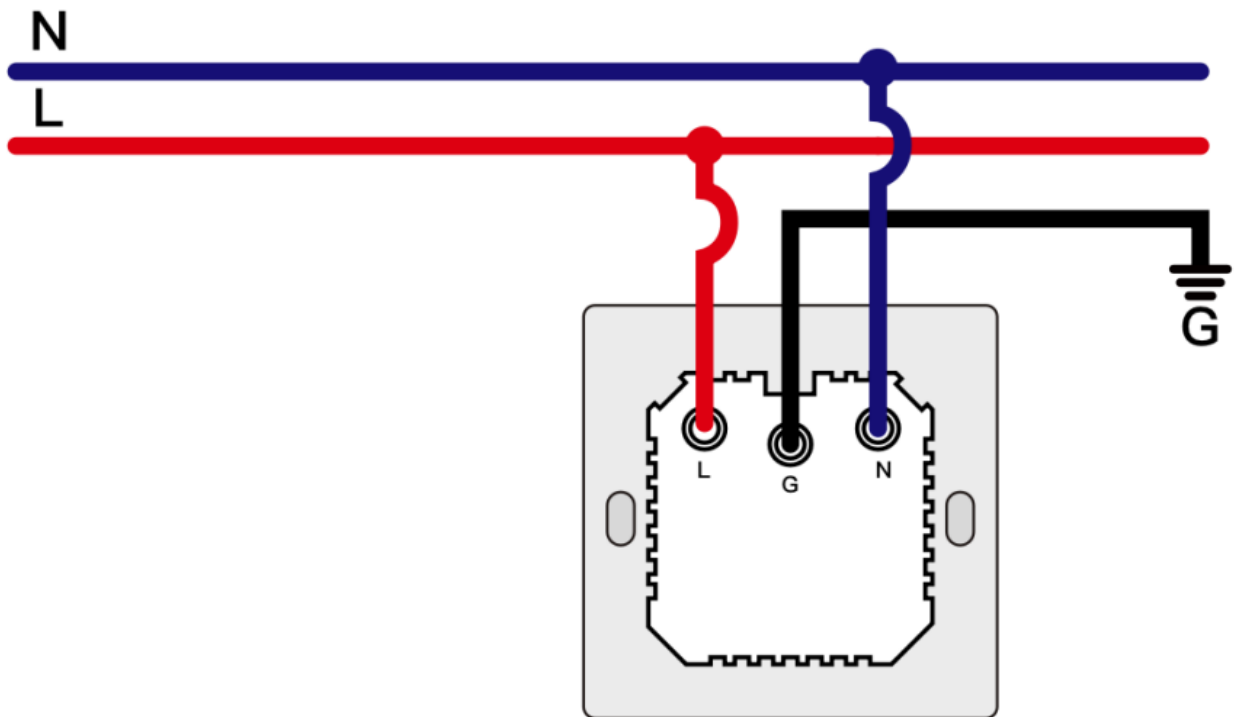
Step 6 – Preparing to Install Wiring

- Connect the live wire to the “L” terminal.
- Connect the neutral wire to the “N” terminal.
- Connect the ground wire to the “G” terminal.

EU/FR

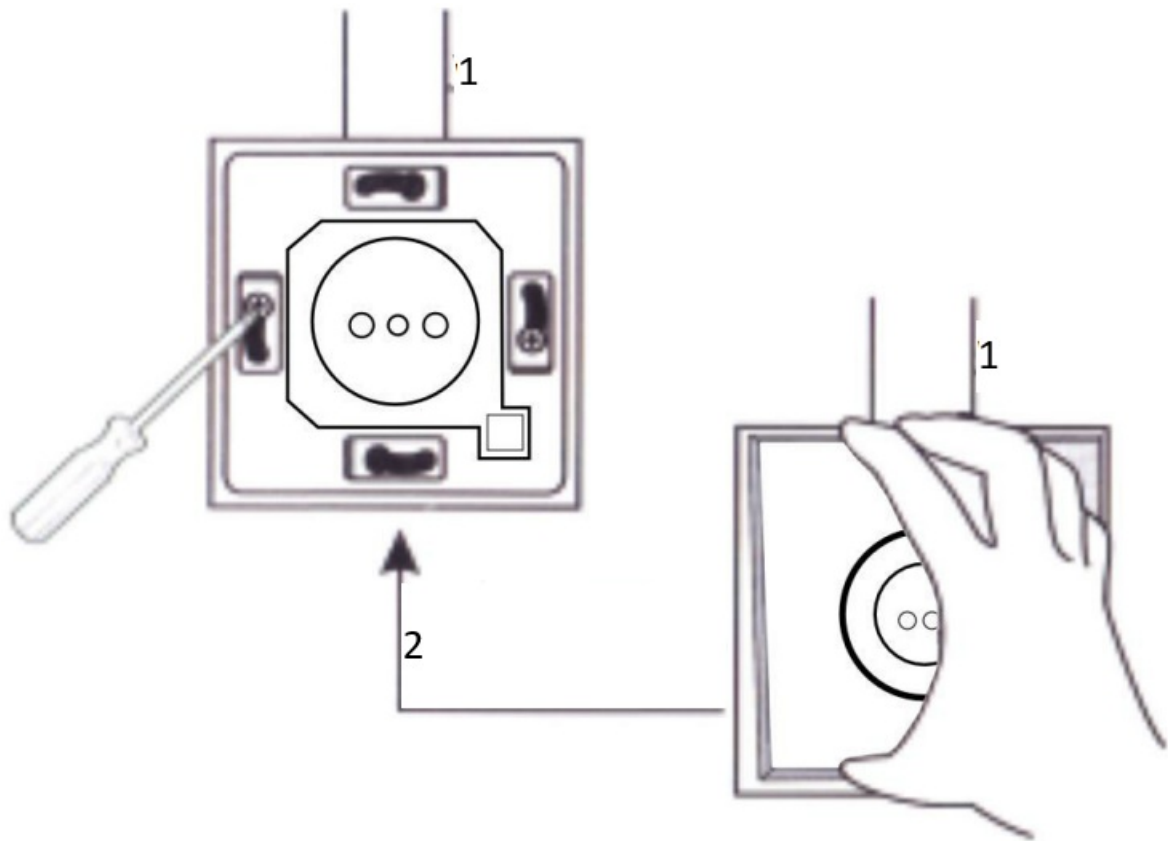


UK



Step 7

- Place the switch into the switch box on the wall.
- Mount the two side screws.
- Install the glass panel from above to complete the installation.



1. Wire channel
2. Cover glass panel

Getting Ready for Use



1. Downloading the MOES App

The MOES App offers enhanced compatibility compared to the Tuya Smart/Smart Life App. It functions seamlessly with Siri for scene control, provides widgets, and offers scene recommendations as part of its brand-new, customized service. (Please note: While the Tuya Smart/Smart Life App still works, we highly recommend using the MOES App.)

2. Account Registration or Login:



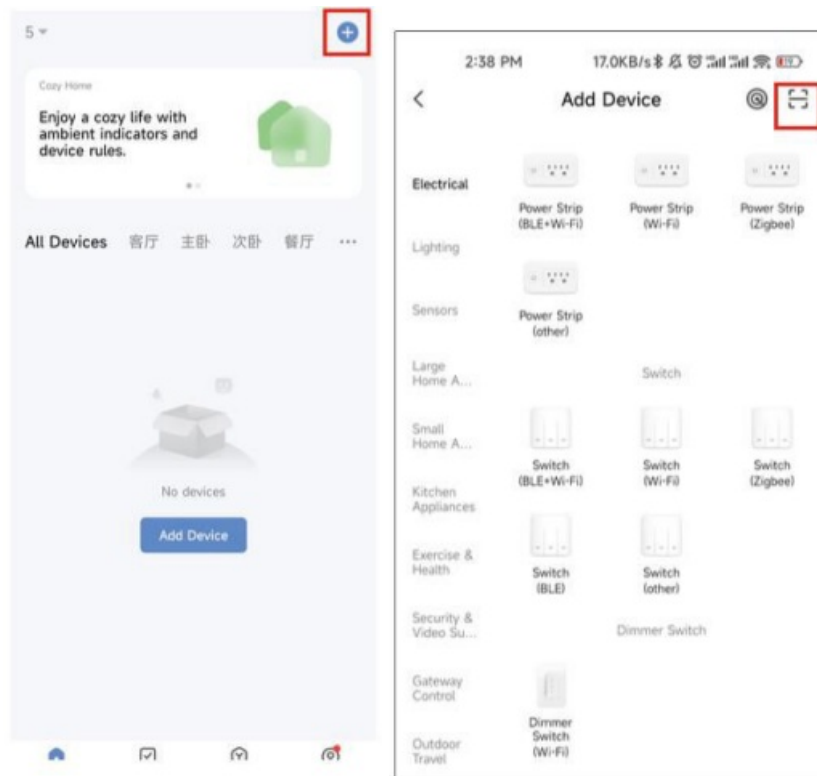
Access the Register/Login interface: select “Register” to create an account by inputting your phone number for a verification code and setting a password. Opt for “Log in” if you already possess a MOES account.

Connecting the APP to the Device

Ensure that the device is within the effective signal coverage of your ZigBee gateway for a successful connection to the MOES APP WiFi gateway.

Method One

Scan the QR code to configure the network guide. Ensure that your MOES APP has successfully connected to a Zigbee gateway.



(1)

(2)



Scan the QR code



Please connect the device according to the configuration process.

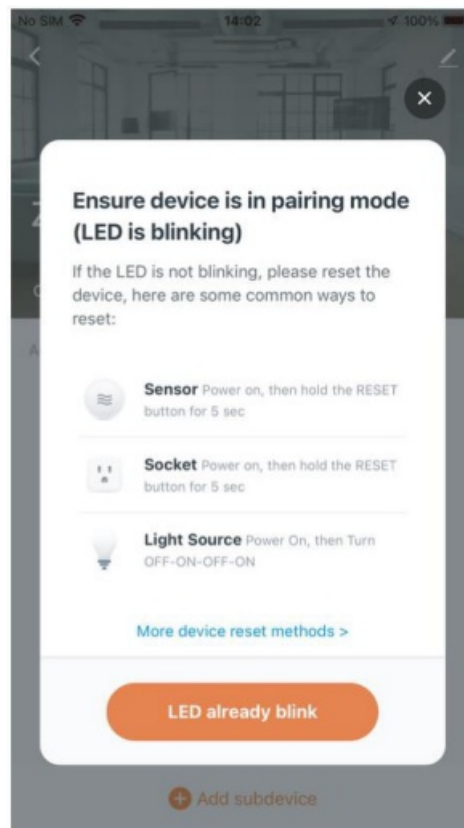
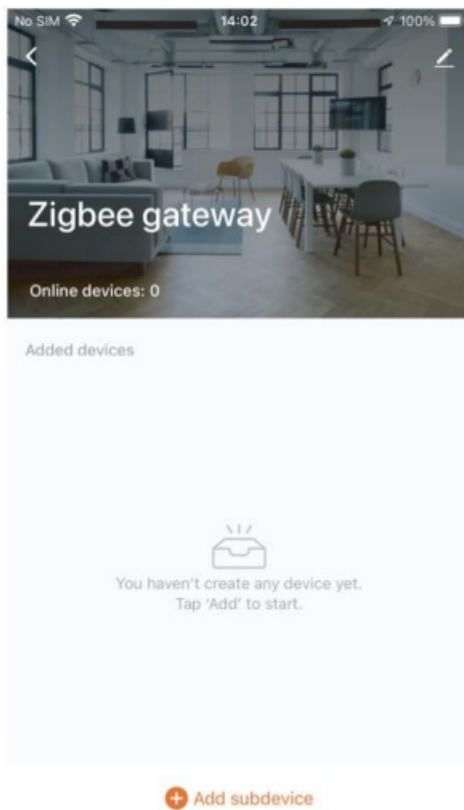
Method Two

1. Confirm that your MOES APP is connected to a Zigbee gateway.

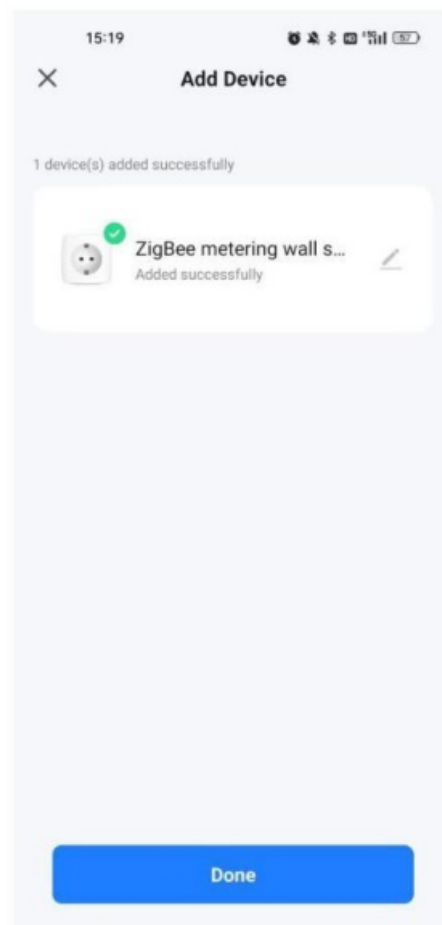


2. Press and hold the button for approximately 7 seconds until the switch indicator flashes rapidly after 3 seconds. The repair is successful.

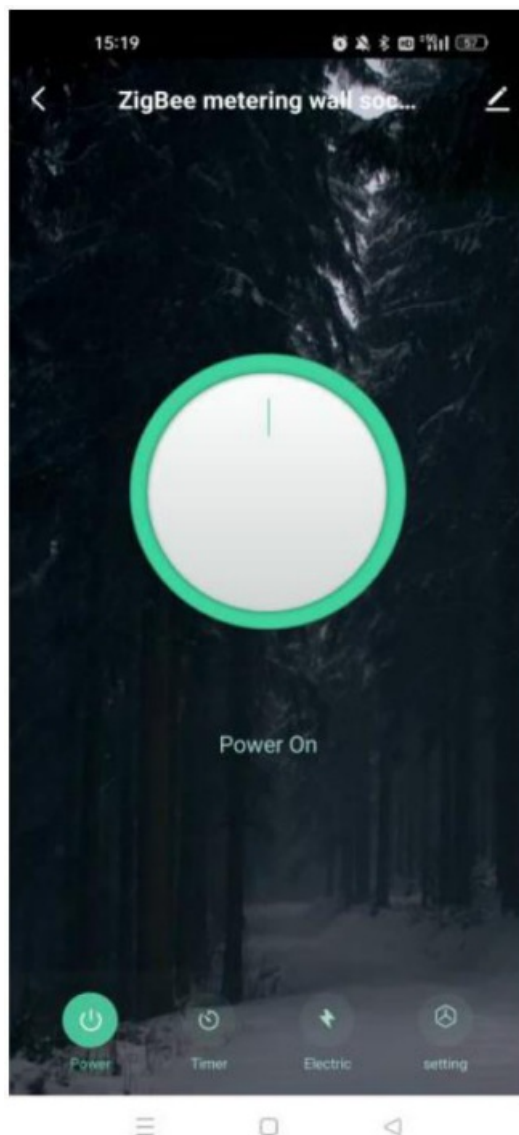
3. Enter the gateway and follow the steps in the image below: "Add subdevice LED already blinks, and the connection will take about 10 – 120 seconds to complete depending on your network conditions."



4. After successfully adding the device, you can edit its name and enter the device page by clicking “Done.”



5. Click “Done” to enter the device page and start enjoying your smart home automation.



Reset/Re-pair ZigBee Code

Press and hold the button for about 7 seconds until the blue indicator on the switch flashes rapidly after 3 seconds. The reset/re-pair is successful.

Setting Up MOES Skill with Alexa

1. **Configure Device Networking in the App:** Complete the networking setup for your device as guided by the App. For easy identification, rename the device in the App, such as “Alexa” or a suitable English name like “bed light.”
2. **Set Up Amazon Echo Device:** (Skip if already configured. The following steps are based on the iOS client.)
 - Ensure your Amazon Echo is powered on and connected to Wi-Fi.
 - Open the Alexa App, log in, and navigate to “Settings” via the menu in the upper left corner.
 - Select “Set Up A New Device” to configure your Amazon Echo.
 - Choose your Amazon Echo device type and language.
 - Press and hold the small dot on the device until it turns yellow.
 - Click “Continue” to connect to the hotspot, then return to the App after connecting to the Amazon Echo hotspot.
 - Continue to find and connect to your home Wi-Fi network.

- Wait a few minutes for Amazon Echo to establish a network connection.
- After successful connection, tap “Continue,” watch the introduction video, and then tap “Continue” to access the Alexa Home page.
- Congratulations! You’ve completed the Amazon Echo configuration.

3. Link Skill:

- Tap “Skills” in the Alexa App menu.
 - Search for “App Name,” and enable the Skill.
 - Enter your App account and password, then tap “Link Now” to link your App account and activate the Skill.
- Your smart home journey is now ready to begin.

4. Common Voice Commands: Control your device effortlessly with voice commands

- “Alexa, turn on <device name>”
- “Alexa, turn off <device name>”

Warranty Conditions

A new product purchased in the Alza.cz sales network is guaranteed for 2 years. If you need repair or other services during the warranty period, contact the product seller directly, you must provide the original proof of purchase with the date of purchase.

The following are considered to be a conflict with the warranty conditions, for which the claimed claim may not be recognized:

- Using the product for any purpose other than that for which the product is intended or failing to follow the instructions for maintenance, operation, and service of the product.
- Damage to the product by a natural disaster, the intervention of an unauthorized person or mechanically through the fault of the buyer (e.g., during transport, cleaning by inappropriate means, etc.).
- Natural wear and aging of consumables or components during use (such as batteries, etc.).
- Exposure to adverse external influences, such as sunlight and other radiation or electromagnetic fields, fluid intrusion, object intrusion, mains overvoltage, electrostatic discharge voltage (including lightning), faulty supply or input voltage and inappropriate polarity of this voltage, chemical processes such as used power supplies, etc.
- If anyone has made modifications, modifications, alterations to the design or adaptation to change or extend the functions of the product compared to the purchased design or use of non-original components.

EU Declaration of Conformity

This equipment is in compliance with the essential requirements and other relevant provisions of EU directives.



WEEE

This product must not be disposed of as normal household waste in accordance with the EU Directive on Waste Electrical and Electronic Equipment (WEEE – 2012/19 / EU). Instead, it shall be returned to the place of purchase






or handed over to a public collection point for the recyclable waste. By ensuring this product is disposed of correctly, you will help prevent potential negative consequences for the environment and human health, which could otherwise be caused by inappropriate waste handling of this product. Contact your local authority or the nearest collection point for further details. Improper disposal of this type of waste may result in fines in accordance with national regulations.



Documents / Resources

	Moes ZigBee 3.0 Smart Socket [pdf] User Manual ZigBee 3.0 Smart Socket, Smart Socket, Socket
--	---

References

-  [alza.at](#)
-  [Alza | Alza.co.uk](#)
-  [alza.de](#)
-  [alza.hu](#)
-  [alza.sk](#)
- [User Manual](#)