



Moes WP-FR2 Wi-Fi Smart Socket User Manual

[Home](#) » [MOES](#) » Moes WP-FR2 Wi-Fi Smart Socket User Manual 

Contents

- [1 Moes WP-FR2 Wi-Fi Smart Socket](#)
- [2 Specifications](#)
- [3 Getting Ready for Use](#)
- [4 FAQ](#)
- [5 Getting Ready for Use](#)
- [6 Warranty Conditions](#)
- [7 CONTACT](#)
- [8 Documents / Resources](#)
 - [8.1 References](#)

MOES

Moes WP-FR2 Wi-Fi Smart Socket



Specifications

- Product name: Wi-Fi Smart Socket
- Connectivity: Wi-Fi
- Supported tasks: Scheduling, countdowns, real-time two-way feedback
- Integration: Compatible with Amazon Echo smart box

Getting Ready for Use

1. Start by scanning the QR code to download and install the 'Smart Life' app on your phone. Alternatively, you can find the 'Smart Life' app on the App Store for iOS or Google Play for Android devices and install it.
2. Ensure that your phone is connected to your home Wi-Fi network operating on the 2.4 GHz frequency.
3. Insert the Wi-Fi smart outlets into your power socket. Look for the flashing blue LED light indicating it's in setup mode. If there's no flashing or if you need to reconfigure, press and hold the button for about 5 seconds to restore the factory settings.

Adding Devices To Smart Life App

1. Launch the 'Smart Life' app and tap on 'All Devices.' From the list, select 'Electrical Outlet' and enter your mobile phone's connected Wi-Fi password as instructed (refer to images 1 to 7).
2. Once the device configuration is successful, navigate to the device control interface by clicking on '...' Here, you can manage the device, modify its name, check for firmware updates, and restore factory settings, among other options.
3. Move to the 'Scenes' page and click on the '+' icon in the top right corner to create a new scene. Enter a name for the scene and add the necessary tasks you want the device to perform, whether it's a single action or multiple tasks. After configuring the scene, save it for easy management of your devices.

Using Amazon Echo to Control Smart Socket

1. Step 1: Start by launching the Amazon Alexa app. Navigate to the menu and locate the Skill button.
2. Step 2: Within the Skill section, search for Smart Life and select the first option. Enable the skill to integrate it with your Amazon Echo device.
3. Step 3: Provide your country code and enter the credentials for your Smart Life app account, including your username and password. Once filled, click the Link now button. After successful login, confirm by pressing Done.
4. Step 4: Return to the main menu of the Amazon Alexa app and select the Smart Home button. From here, navigate to Devices and click on the Discover button. This action allows Amazon Echo to recognize and connect with your Smart devices.
5. Step 5: Congratulations! Your Amazon Echo is now synced with your Smart devices. You can seamlessly use your Alexa to control all your Smart devices. Enjoy the convenience and simplicity of managing your home environment effortlessly.

FAQ

- **Q:** How do I download and install the 'Smart Life' app?
- **A:** You can scan the QR code provided or search for the 'Smart Life' app on the App Store for iOS or Google Play for Android devices and install it from there.
- **Q:** How do I reset the Wi-Fi Smart Socket to factory settings?
- **A:** Press and hold the button on the socket for about 5 seconds to restore the factory settings.
- **A:** Yes, you can add multiple tasks to a scene and manage multiple devices simultaneously.

Dear customer,

Thank you for purchasing our product. Please read the following instructions carefully before first use and keep this user manual for future reference. Pay particular attention to the safety instructions. If you have any questions or comments about the device, please contact the customer line.

About the Product

The Wi-Fi Smart Socket offers seamless connectivity to the internet via Wi-Fi, enabling remote control of household appliances through mobile phones. It supports various tasks such as scheduling, countdowns, real-time two-way feedback, and more. Additionally, for hands-free operation, it can be integrated with the Amazon Echo smart box, allowing users to control devices using voice commands after successful configuration.

Getting Ready for Use

1. Start by scanning the QR code to download and install the 'Smart Life' app on your phone. Alternatively, you can find the 'Smart Life' app on the App Store for iOS or Google Play for Android devices and install it.
2. Ensure that your phone is connected to your home Wi-Fi network operating on the 2.4 GHz frequency.
3. Insert the Wi-Fi smart outlets into your power socket. Look for the flashing blue LED light indicating it's in setup mode. If there's no flashing or if you need to reconfigure, press and hold the button for about 5 seconds to restore the factory settings.

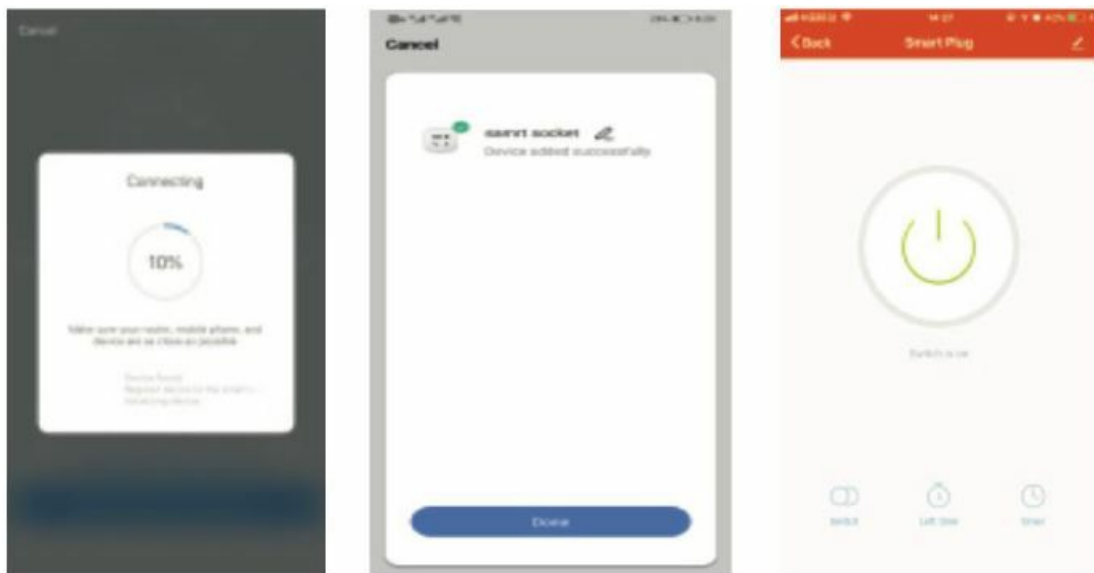


iOS android

Adding Devices To Smart Life App

1. Launch the 'Smart Life' app and tap on 'All Devices.' From the list, select 'Electrical Outlet' and enter your mobile phone's connected Wi-Fi password as instructed (refer to images 1 to 7).

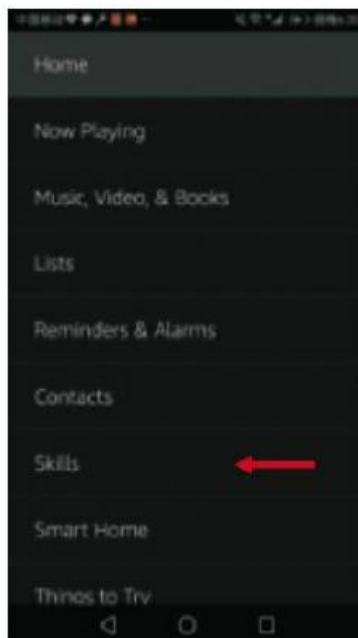




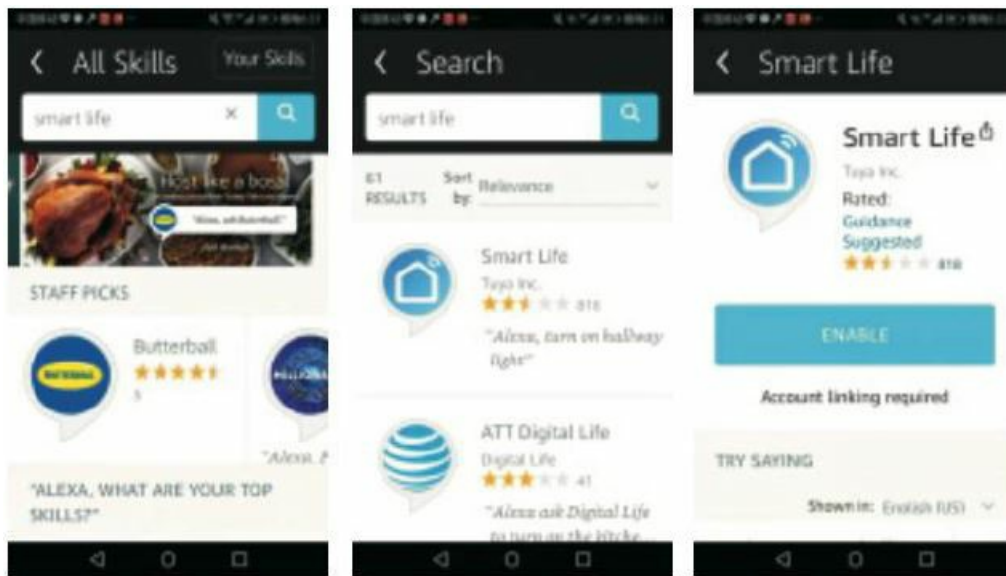
2. Once the device configuration is successful, navigate to the device control interface by clicking on '...' Here, you can manage the device, modify its name, check for firmware updates, and restore factory settings, among other options.
3. Move to the 'Scenes' page and click on the '+' icon in the top right corner to create a new scene. Enter a name for the scene and add the necessary tasks you want the device to perform, whether it's a single action or multiple tasks. After configuring the scene, save it for easy management of your devices.

Using Amazon Echo to Control Smart Socket

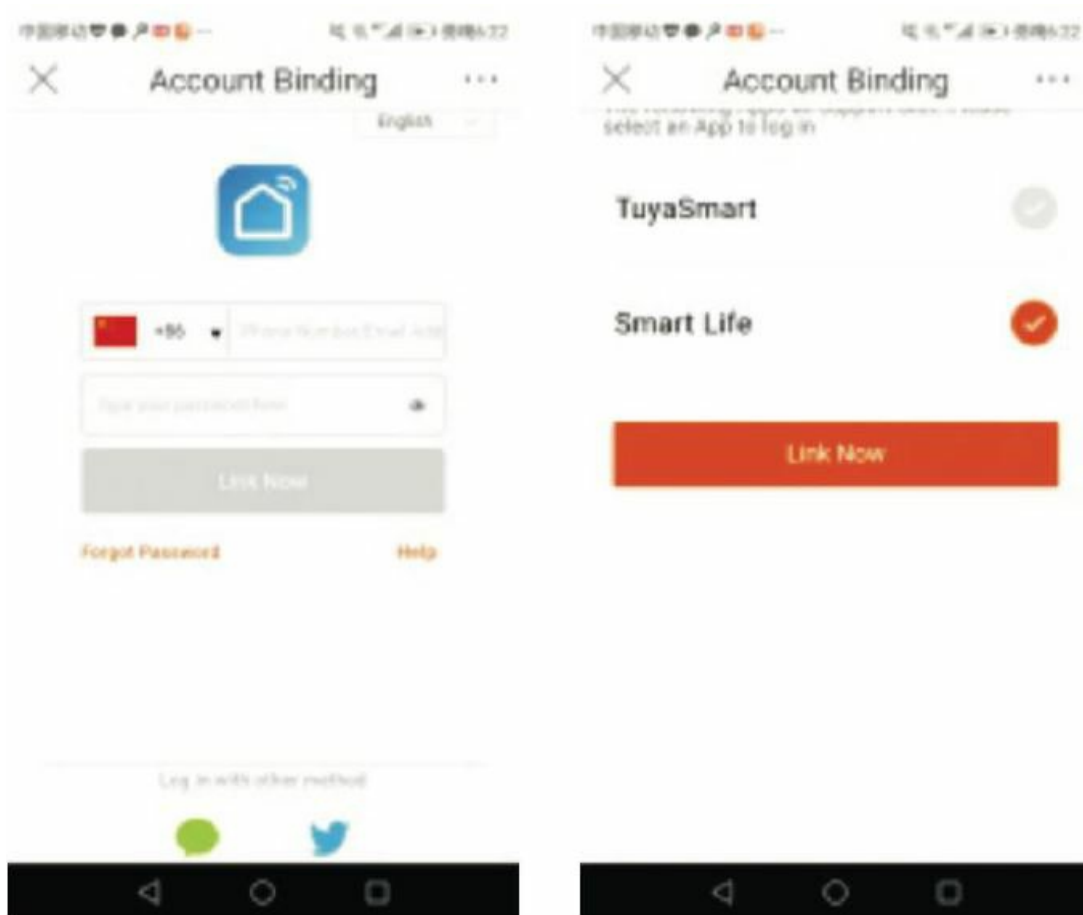
- **Step 1:** Start by launching the "Amazon Alexa" app. Navigate to the menu and locate the "Skill" button.



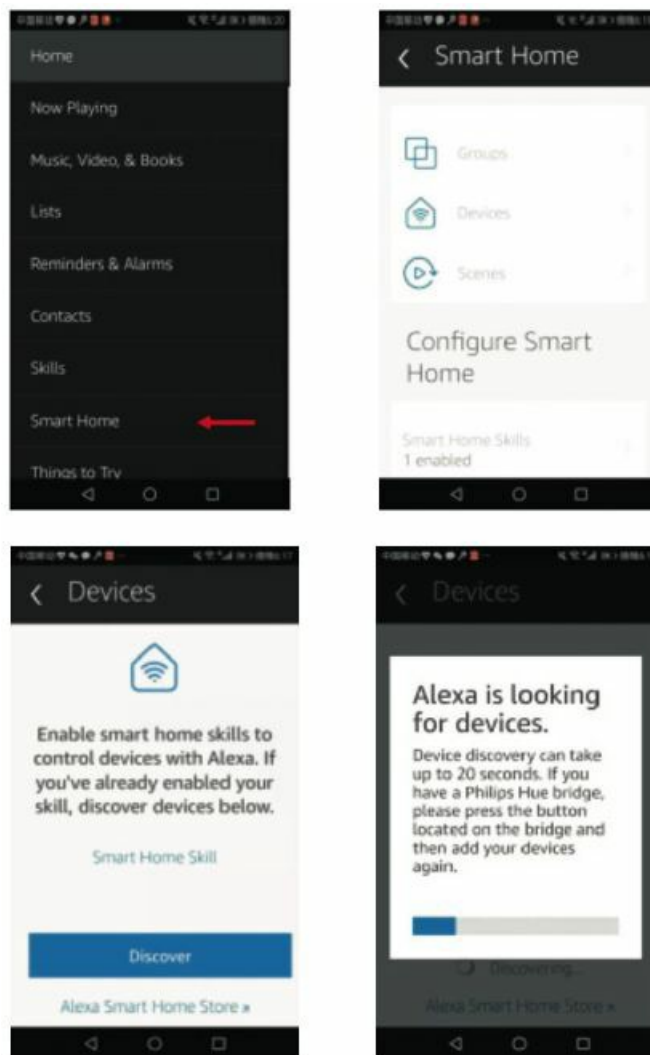
- **Step 2:** Within the "Skill" section, search for "Smart Life" and select the first option. Enable the skill to integrate it with your Amazon Echo device.



- **Step 3:** Provide your country code and enter the credentials for your “Smart Life” app account, including your username and password. Once filled, click the “Link now” button. After successful login, confirm by pressing “Done.”



- **Step 4:** Return to the main menu of the “Amazon Alexa” app and select the “Smart Home” button. From here, navigate to “Devices” and click on the “Discover” button. This action allows Amazon Echo to recognize and connect with your Smart devices.



- **Step 5:** Congratulations! Your Amazon Echo is now synced with your Smart devices. You can seamlessly use your Alexa to control all your Smart devices. Enjoy the convenience and simplicity of managing your home environment effortlessly.

Warranty Conditions

A new product purchased in the Alza.cz sales network is guaranteed for 2 years. If you need repair or other services during the warranty period, contact the product seller directly, you must provide the original proof of purchase with the date of purchase.

The following are considered to be a conflict with the warranty conditions, for which the claimed claim may not be recognized:

- Using the product for any purpose other than that for which the product is intended or failing to follow the instructions for maintenance, operation, and service of the product.
- Damage to the product by a natural disaster, the intervention of an unauthorized person or mechanically through the fault of the buyer (e.g., during transport, cleaning by inappropriate means, etc.).
- Natural wear and aging of consumables or components during use (such as batteries, etc.).
- Exposure to adverse external influences, such as sunlight and other radiation or electromagnetic fields, fluid intrusion, object intrusion, mains overvoltage, electrostatic discharge voltage (including lightning), faulty supply or input voltage and inappropriate polarity of this voltage, chemical processes such as used power supplies, etc.
- If anyone has made modifications, modifications, alterations to the design or adaptations to change or extend the functions of the product compared to the purchased design or use of non-original components.

EU Declaration of Conformity

This equipment complies with the essential requirements and other relevant provisions of EU directives.



WEEE

This product must not be disposed of as normal household waste under the EU Directive on Waste Electrical and Electronic Equipment (WEEE – 2012/19 / EU). Instead, it shall be returned to the place of purchase or handed over to a public collection point for the recyclable waste. By ensuring this product is disposed of correctly, you will help prevent potential negative consequences for the environment and human health, which could otherwise be caused by inappropriate waste handling of the product. Contact your local authority or the nearest collection point for further details. Improper disposal of this type of waste may result in fines under national regulations.



CONTACT

- www.alza.co.uk/kontakt.
- ☎ +44 (0)203 514 4411
- Importer Alza.cz a.s., Jankovcova 1522/53, Holešovice, 170 00 Praha 7, www.alza.cz.

Documents / Resources

 Moes Wi-Fi Smart Socket <small>Smart Socket • 1500mAh battery • Wi-Fi control • Remote control • Energy saving</small>	Moes WP-FR2 Wi-Fi Smart Socket [pdf] User Manual WP-FR2 Wi-Fi Smart Socket, WP-FR2, Wi-Fi Smart Socket, Smart Socket, Socket
---	---

References

- 🌐 alza.at
- 🌐 Alza | Alza.co.uk
- 🌐 alza.de
- 🌐 alza.hu

- alza.sk
- [User Manual](#)

[Manuals+](#), [Privacy Policy](#)