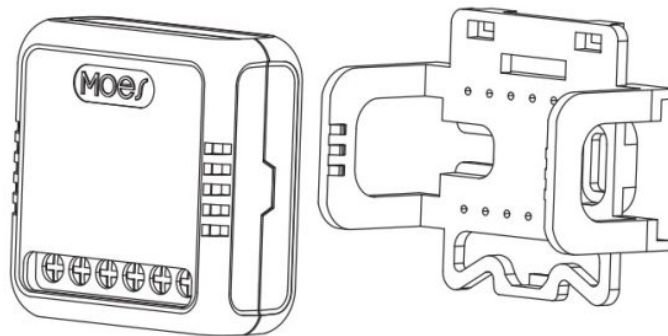


Moes WM-104-M Matter Smart Switch Module Instruction Manual

[Home](#) » [MOES](#) » Moes WM-104-M Matter Smart Switch Module Instruction Manual 



Instruction Manual
Matter Smart Switch Module
Model:WM-104-M
Matter WiFi



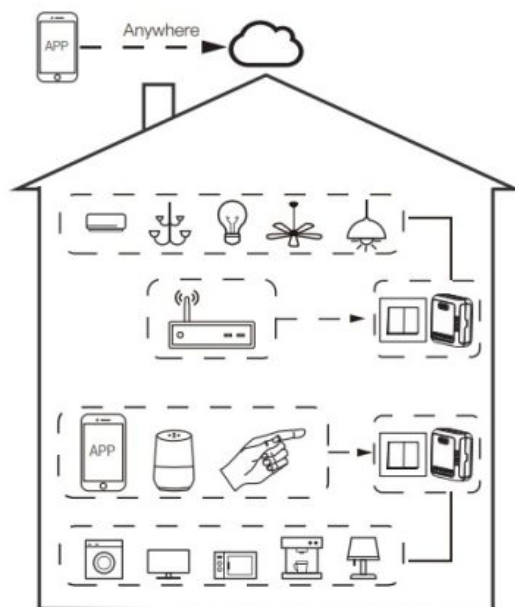
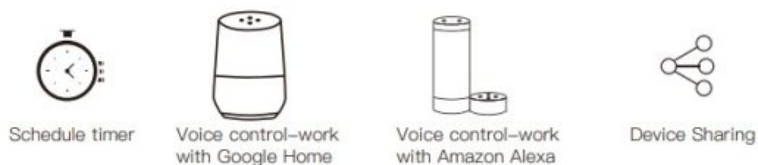
Contents

- 1 WM-104-M Matter Smart Switch Module
- 2 Product introduction
- 3 Package list
- 4 Technical specifications
- 5 Wiring diagram
- 6 Download the MOES APP
- 7 Set up your device via matter
- 8 Control your home with your voice
- 9 Declaration of conformity
- 10 Troubleshooting
- 11 RECYCLING INFORMATION
- 12 WARRANTY INSTRUCTIONS
- 13 WARRANTY CARD
- 14 Documents / Resources
- 14.1 References

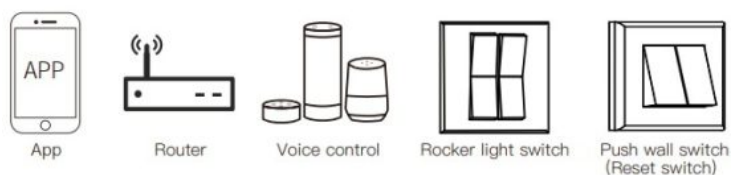
WM-104-M Matter Smart Switch Module

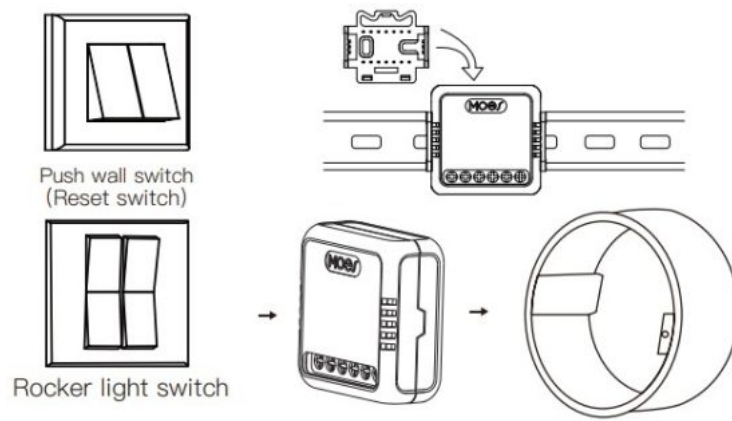


Global international operation Whenever & Wherever You are, All-in-one Mobile App



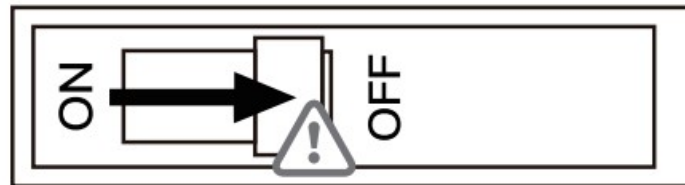
In house local operation





Step 1

- Turn off the circuit breaker and use the electrical tester to test the power.
- Ensure the circuit breaker is off before wiring.

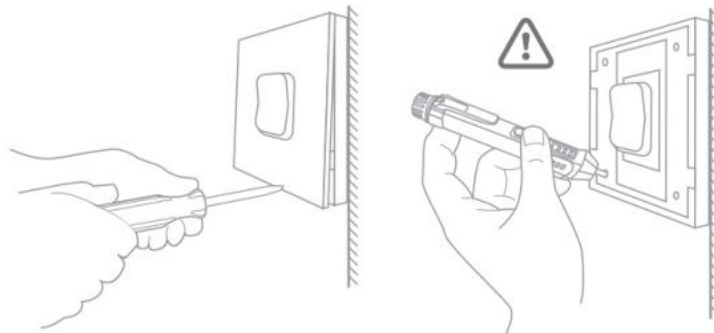


⚠ Attention:

Please disconnect the power supply before installing or removing the device for avoiding irreversible damage on the device from the electric current or some unpredictable problems such as lamp flashing.

Step 2

- Remove the old switch



Step 3

- Remove the switch and pull it away from the wall. Identify Line/Load Wire (Note: The color of your wire may be different from the color shown on the manual.)

⚠ Verify power is off

- We recommend you remove the faceplate from the old switch and use an electrical tester to test all wires connected to the switch to ensure there is no voltage in the circuit.

- You may need to turn off more than one circuit breaker.

Product introduction

Smart switch module is a kind of smart home device, by connecting to the WIFI network, it can realize functions such as remote control and timing switch. It is widely used in homes, offices, factories and other places. providing users with a more convenient and intelligent electricity experience.

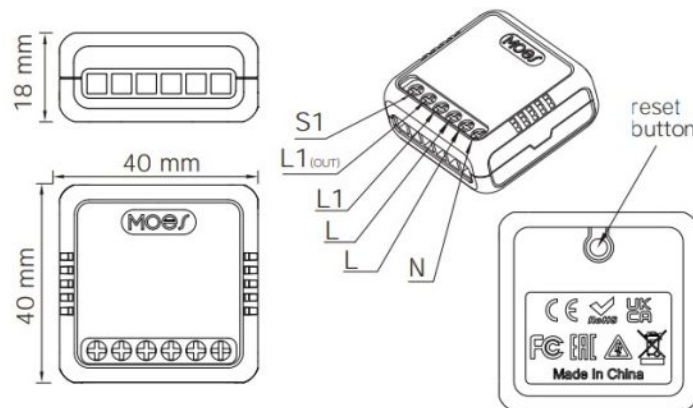
Package list

Smart Dimmer Module *1 User Manual *1 Bracket *1

Warnings:

1. Installation must be carried out by a qualified electrician in accordance with local regulations.
2. Keep the device out of the reach of children.
3. Keep the device away from water , damp or hot environment.
4. Install the device away from strong signal sources such as microwave oven that may cause signal interruption resulted in abnormal operation of the device.
5. Obstruction by concrete wall or metallic materials may reduce the effective operation range of the device and should be avoided.
6. Do NOT attempt to disassemble,repair or modify the device.

1Gang Smart Switch Module



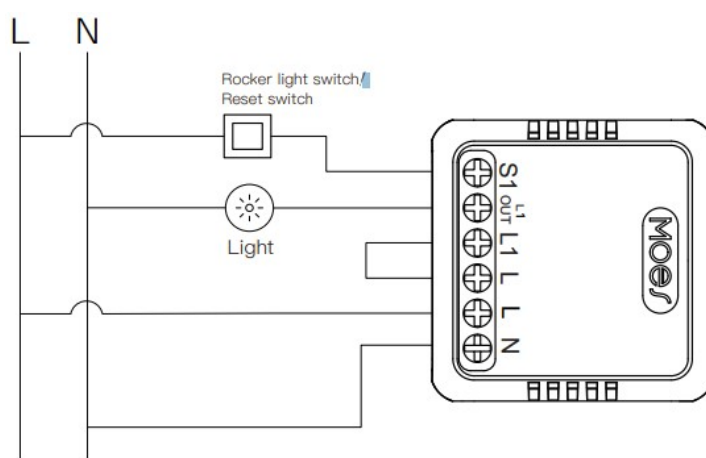
Technical specifications

Model	Smart Switch Module
Product Type	Matter WiFi
Voltage	-10°C ~ 65°C
Current	40x40x18 mm
Wireless Protocol	IP20
Operation Temp.	WM-104-M
Case Temp.	90-250V AC 50/60Hz; 5-30V DC
Operation Range	10A/Gang;Total 10A
Dims (WxDxH)	≤70 m
IP Rating	Tc: +80°C (Max.)
Frequency band	2.412-2.484GHZ
Maximum radio transmit power	<+16dBm

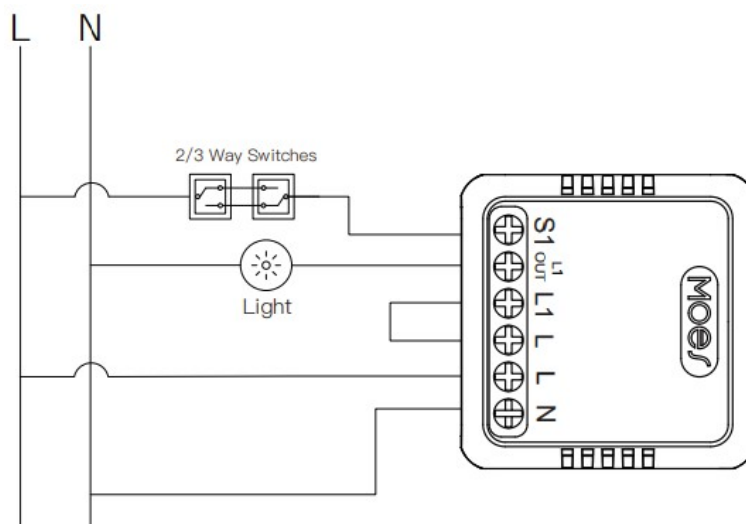
Wiring diagram

1Gang Smart Switch Module

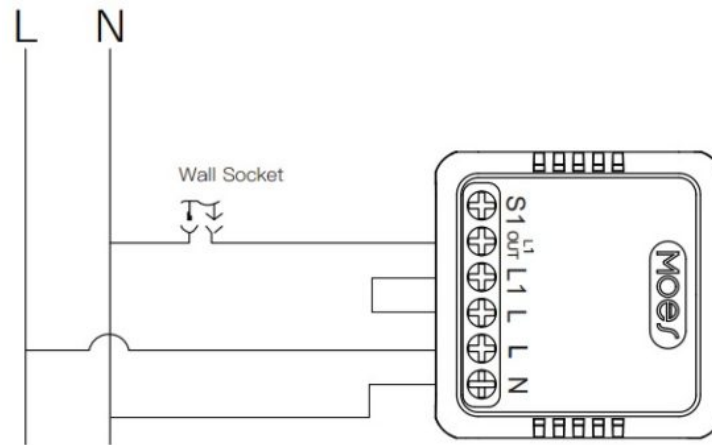
1. With one 1 Gang switch



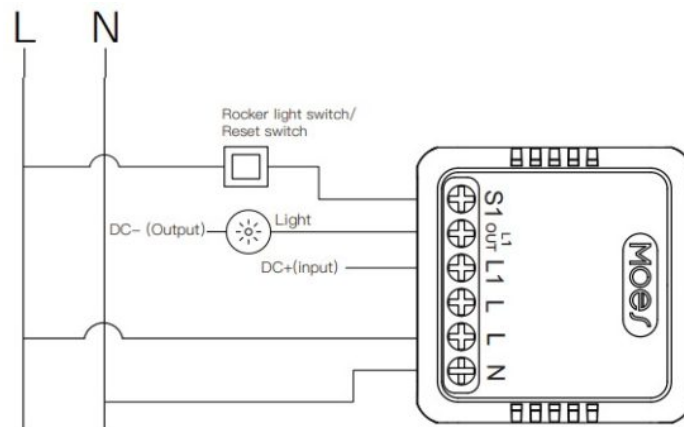
2. With two 2/3 Way switches



3. With Wall Socket



4. Control DC load



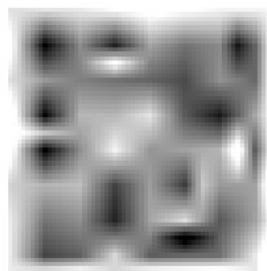
Wiring Instructions and Diagrams

1. Turn off the power supply before carrying out any electrical installation work.
2. Connect wires according to the wiring diagram.
3. Insert the module into the junction box.
4. Connect the power supply and follow switch module configuration instructions.

Notes: Put your smartphone close to the switch module when you're configuring, and make sure you have min. 50% Wi-Fi signal.

Download the MOES APP

1. Download MOES App on App store or scan the QR code



MOES App is upgraded as much more compatibility than Tuya Smart/Smart Life App, functional well for scene controlled by Siri, widget and scene recommendations as the fully new customized service.

(Note: Tuya Smart/Smart Life App still works, but MOES App is highly recommended)

2. Registration or Log in.

- Download “MOES” Application.
- Enter the Register/Login interface; tap “Register” to create an account by entering your phone number to get verification code and “Set password”. Choose “Log in” if you already have a MOES account.

Note: The device only supports 2.4GHz WiFi type, please turn on Bluetooth before adding.

1. Select “Add Device” and scan the QR code on the device;

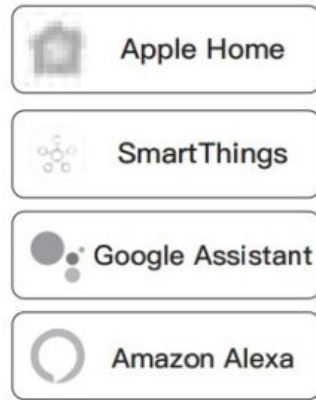


2. Wait for WiFi configuration, Add the device successfully, you can edit the name of the device to enter the device page by click “Done” .



Set up your device via matter

You can scan the QR code to get the guide. This guide provides a brief introduction to the Wi-Fi smart devices, Take Alexa, Google, and Apple ecosystems for example and the following shows you how to set up via Matter.



How to reset /pair Wi-Fi code

a. For switch module:

Press and hold the reset button on the module until the indicator light flashes quickly, and the device starts the network configuration.

b. For rocker light switch:

Press the switch button for 20 times (ON/OFF cycle for 10 times) until the indicator light flashes quickly, and the device starts the network configuration.

c. For reset switch:

press the switch button for 10 times until the indicator light flashes quickly, and the device starts the network configuration.

Control your home with your voice

Devices are compatible with Amazon Alexa and Google Home supported functionalities.

Please see our step-by-step guide on:

<https://www.moestech.com/blogs/news/smartdevice-linked-voice-speaker>

Declaration of conformity

Hereby, WENZHOU NOVA NEW ENERGY CO.,LTD declares that the radio equipment type WM-104-M is in compliance with Directive 2014/53/EU, 2014/35/ EU, 2014/30/EU, 2011/65/EU. The full text of the EU declaration of conformity is available at the following internet address

<https://www.moestech.com/blogs/news/mwm-104-m>

Troubleshooting

If you have problems installing or operating your device, please review its product data sheet:

<https://www.moestech.com/blogs/news/mwm-104-m>

RECYCLING INFORMATION

All products marked with the symbol for separate collection of waste electrical and electronic equipment (WEEE Directive 2012/19 / EU) must be disposed of separately from unsorted municipal waste. To protect your health and the environment, this equipment must be disposed of at designated collection points for electrical and electronic equipment designated by the government or local authorities.

Correct disposal and recycling will help prevent potential negative consequences for the environment and human health. To find out where these collection points are and how they work, contact the installer or your local authority.



WARRANTY INSTRUCTIONS

Dear Sir or Madam, thank you for purchasing the product.

We hope you'll enjoy using it.

The warranty for the products in the warranty card is hereby granted as follows.

As a condition of using the warranty, you must comply with the following terms and procedures:

1. Products are covered by a 24-month warranty, effective from the date of purchase of the covered product by a retail customer.
2. In order to exercise warranty rights, the purchaser must present: a) Warranty card, b) Proof of purchase (VAT invoice, financial receipt or other document confirming the actual date of purchase), unless the purchase date of the product comes from the warranty card.
3. If product quality problems occur within 24 months from the date of receipt, please prepare the product and packaging and go to the place or store where you purchased it to apply for after-sales maintenance. If the product is damaged due to personal reasons, a certain maintenance fee will be charged.
4. We recommend that you properly protect the goods when delivering them to the guarantor – for this purpose, we recommend that you use the original packaging with padding to ensure safe transportation. If you choose to use replacement packaging, we recommend that you ensure that the product is adequately protected from damage during shipping. We recommend that you place an appropriate sticker on your packaging indicating the product's susceptibility to impact, such as "Warning Glass".
5. Reported defects covered by the warranty will be considered immediately and no later than 14 days from the date of delivery of the goods to the Guarantor.
6. After checking and determining the legality of the warranty claim, the Guarantor's services will repair the product within a reasonable time, not exceeding 30 days from the date of delivery of the goods to the Guarantor.
However, if hard-to-find spare parts are required, this deadline may extend the time it takes to deliver the part from the manufacturer's factory.
7. The warranty does not include the performance of maintenance and similar operations specified in the user manual, and users are obliged to do it themselves.
8. If defects occur due to natural wear and tear during use, the warranty does not cover it.
9. The warranty does not cover:
 - a) Mechanical damage caused by the user's fault and product defects caused by such damage.
 - b) Damage caused by improper use of the product.
10. The rights under the guarantee will expire in the following circumstances:
 - a) Remove the warranty seal from the product.
 - b) Remove the serial number from the product.
 - c) Take action to eliminate physical defects in the product outside of authorized service.
 - d) Use non-original parts and consumables.

WARRANTY CARD

Product Information

Product Name.....
Product Type.....
Purchase Date.....
Warranty Period.....
Dealer Information.....
Customer's Name.....
Customer Phone.....
Customer Address.....

Maintenance Records







Failure date	Cause Of Issue	Fault Content	Principal

Thank you for your support and purchase at we Moes, we are always here for your complete satisfaction, just feel free to share your great shopping experience with us.



If you have any other need, please do not hesitate to contact us first, we will try to meet your demand.

Folow Us

	@moessmart		MOES.Official
	@moes_smart		@moes_smart
	@moes_smart		www.moes.net



HOME, SMART MOES HOME

 EVATOST CONSULTING LTD

Address: Suite 11, First Floor, Moy Road
Business Centre, Taffs Well, Cardiff, Wales,
CF15 7QR

Tel: +44-292-1680945

Email: contact@evatmaster.com


 E-CrossStu-GmbH

Mainzer Landstr. 69 ,60329 Frankfurt am Main

Email: E-crossstu@web.de

Tel: +4969332967674

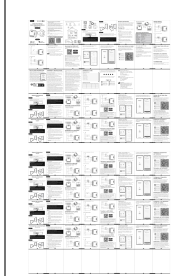
Made in China

 Manufacturer:

WENZHOU NOVA NEW ENERGY CO.,LTD

Address: Power Science and Technology
Innovation Center, NO.238, Wei 11 Road,
Yueqing Economic Development Zone,
Yueqing, Zhejiang, China
Tel: +86-577-57186815
After-sale Service: service@moeshouse.com

Documents / Resources



[Moes WM-104-M Matter Smart Switch Module](#) [pdf] Instruction Manual
WM-104-M, WM-104-M Matter Smart Switch Module, Matter Smart Switch Module, Smart Switch Module, Switch Module, Module

References

- [M MOES Smart: Create Your Smart Life With Smart Home Devices](#)
- [User Manual](#)

Manuals+ Privacy Policy

This website is an independent publication and is neither affiliated with nor endorsed by any of the trademark owners. The "Bluetooth®" word mark and logos are registered trademarks owned by Bluetooth SIG, Inc. The "Wi-Fi®" word mark and logos are registered trademarks owned by the Wi-Fi Alliance. Any use of these marks on this website does not imply any affiliation with or endorsement.