



## MOES WiFi Smart Light Switch Push Button User Manual

[Home](#) » [MOES](#) » MOES WiFi Smart Light Switch Push Button User Manual 

### Contents

- [1 MOES WiFi Smart Light Switch Push Button](#)
- [2 Installation](#)
- [3 Indicator Light Status](#)
- [4 How to download App?](#)
- [5 Setting Smart Life APP](#)
- [6 How to Adding a New Device in Quick Connection](#)
- [7 Adding a New Device in AP Mode](#)
- [8 Documents / Resources](#)
- [9 Related Posts](#)

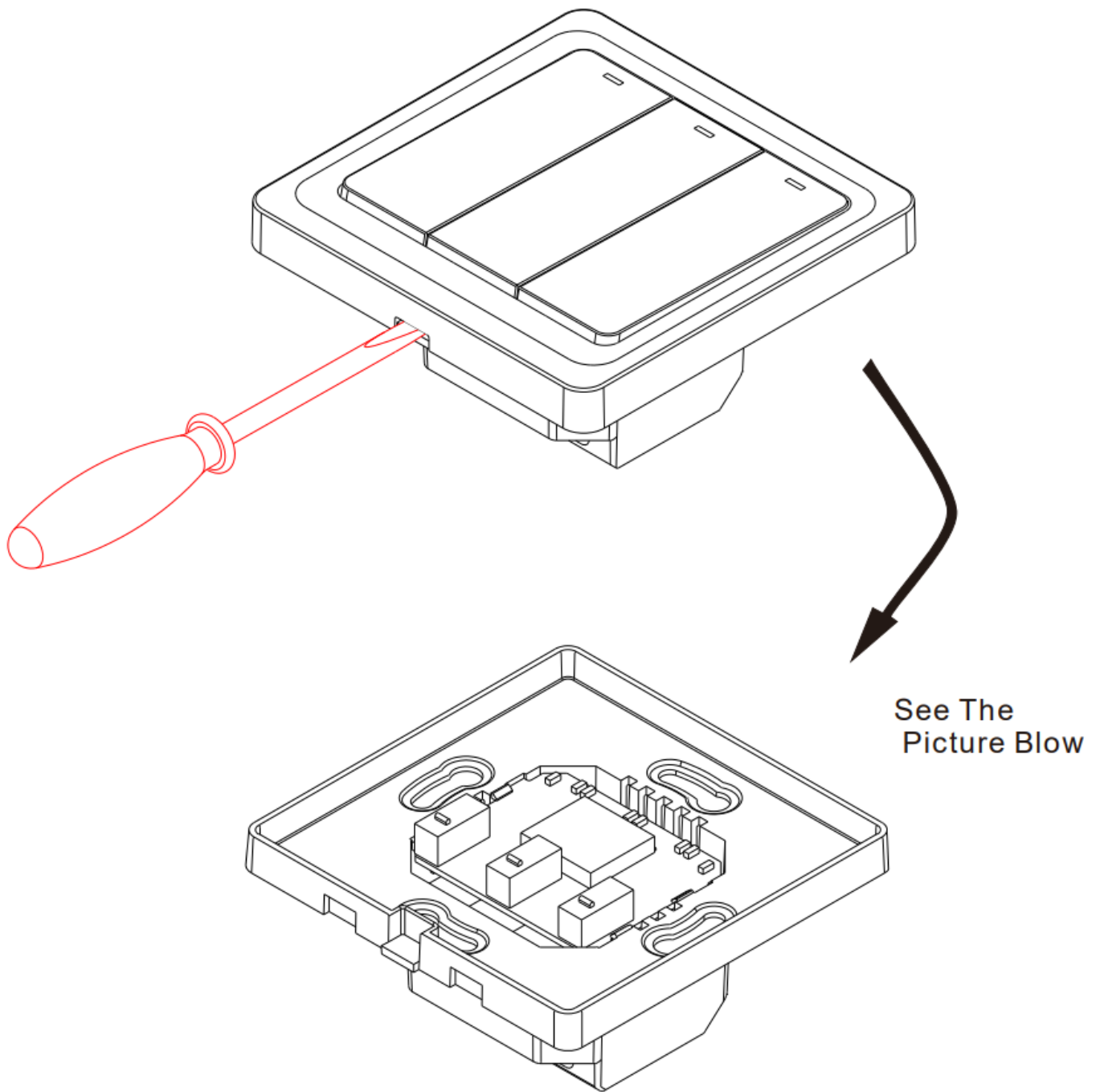
MOES®

**MOES WiFi Smart Light Switch Push Button**

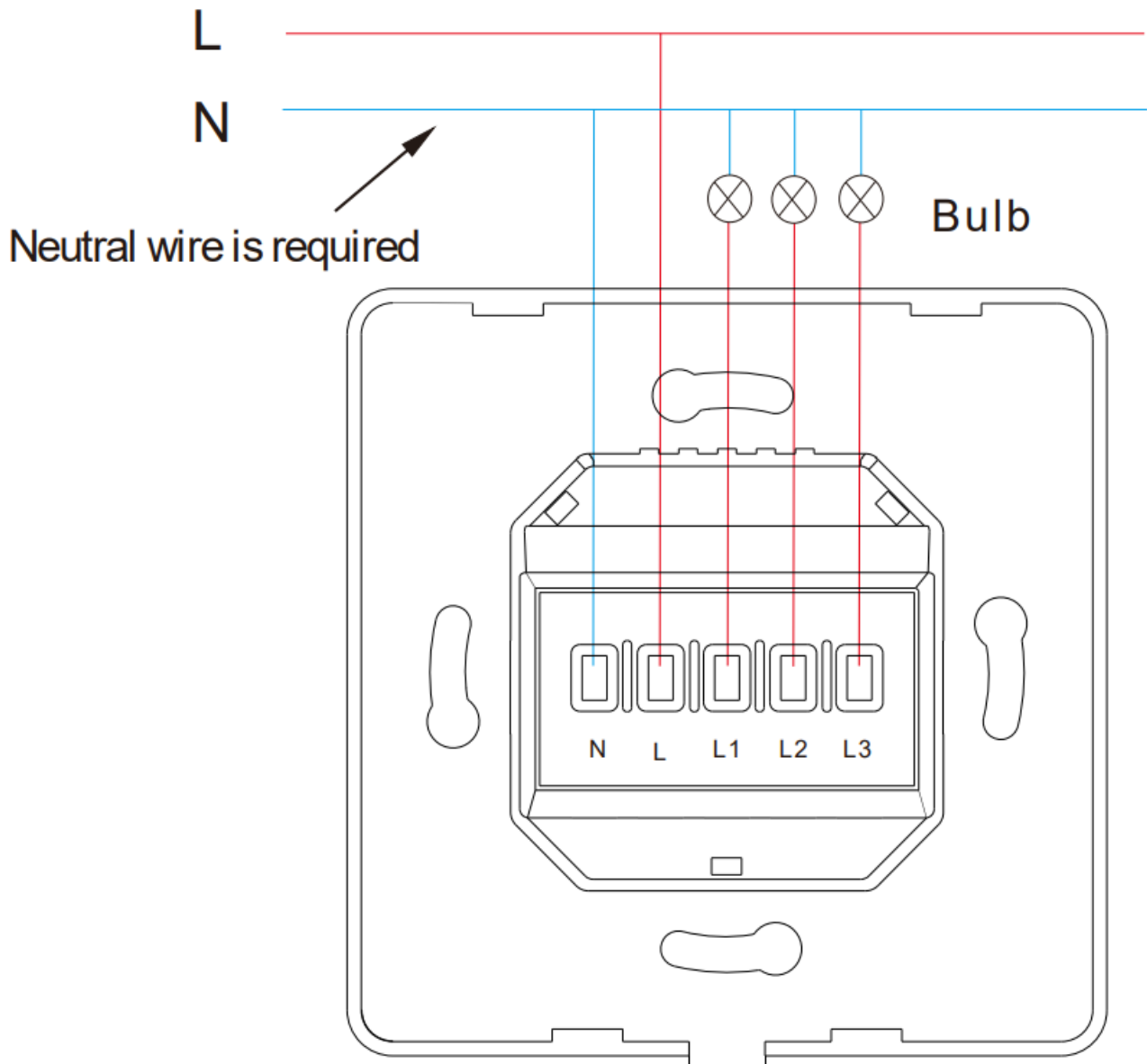


## Installation

- Separate the upper and lower parts from the switch with a screwdriver.
- Dimension: 3.4×3.4×1.7in
- (Noted: Distinguish between each corresponding slot)
- Prepare to install wiring
- Attention: Neutral wire is required.



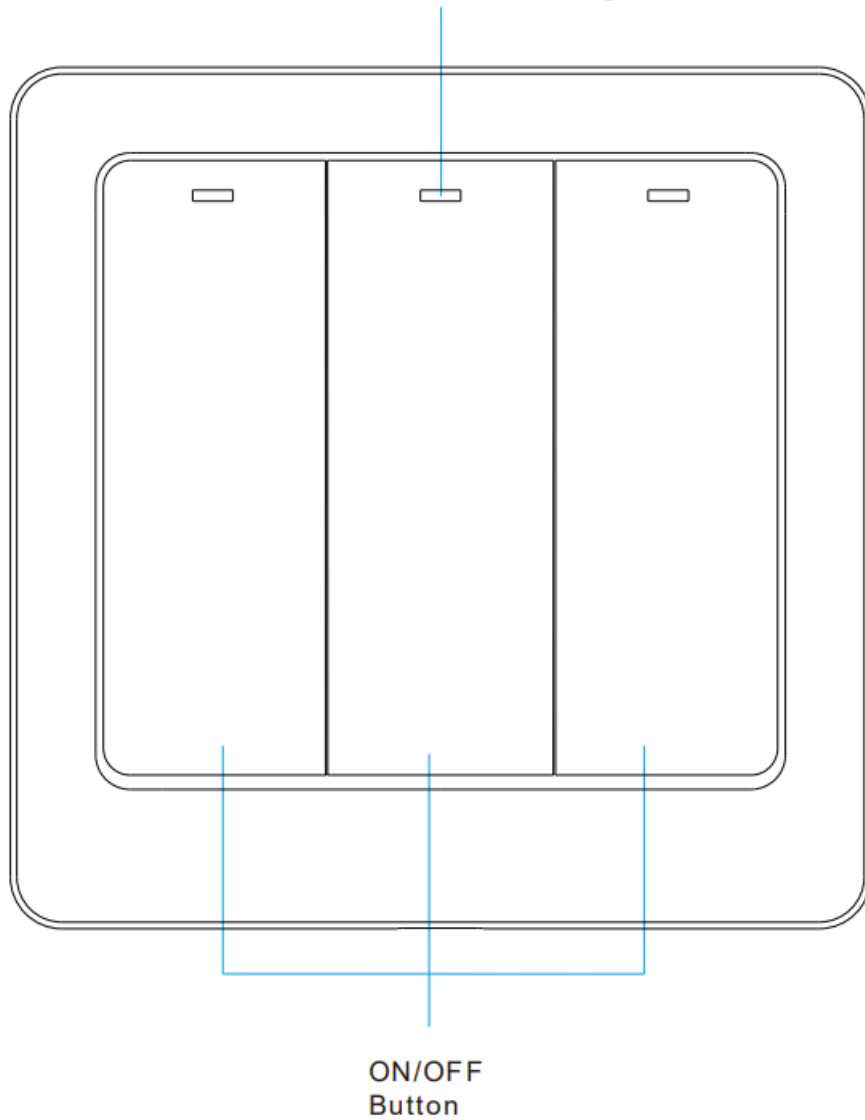
- Live Wire connects the “L” terminal
- Bulb Wire connects the “L1, L2, L3” terminal
- Neutral Wire connects “N” terminal (Attention: Neutral wire is required.)
- gang connects “L1” Terminal
- gangs connect “L1, L2” terminal
- gangs connect “L1, L2, L3” terminal



wiring Schematic

- Fix the switch onto the wall.
- Put the switch lower parts into the switch box in the wall
- Mount the two side screws
- Install the upper top case (install from up above)
- Cover the upper top case with the switch
- Turn on the electricity, and then the LED light will be flashed quickly for pairing.

## WIFI Indicator Light



### Indicator Light Status

- The red light's continuous brightness
- The switch is connected successfully with the mobile phone APP
- The red light blinking slowly
- The switch is not connected to the network
- The red light flashes continuously and quickly
- The switch is currently on the status of matching with the mobile phone APP.
- The red light flash 1 time every 3 seconds
- The switch is into AP pairing Mode

### How to download App?

Scan the QR code below or search Smart Life in the IOS APP store or Google play.

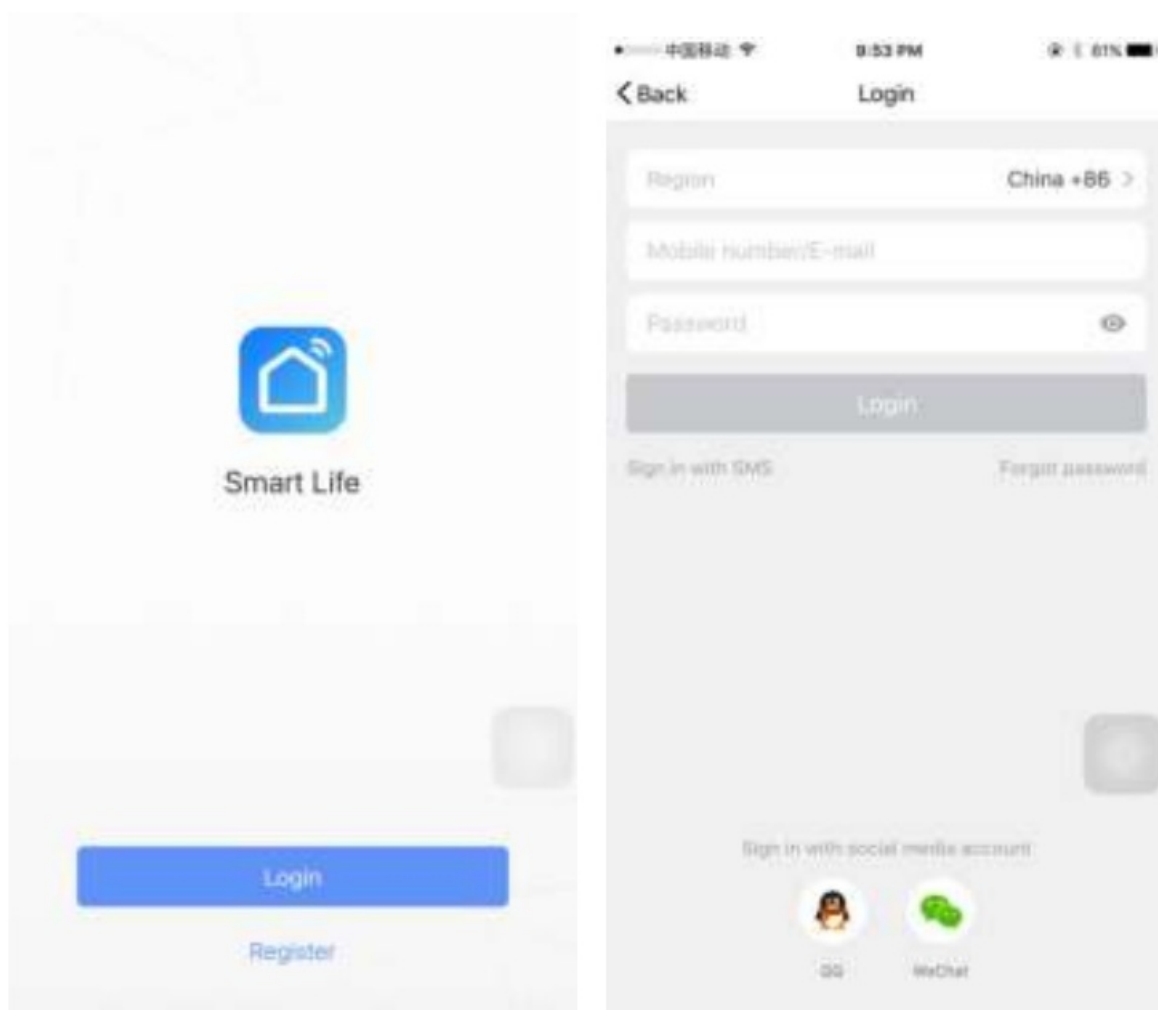


IOS & Android System

## Setting Smart Life APP

### How to Register and Login

1. Download or scan the QR Code and install Smart Life App.
2. Once you Download or Scan the QR Code, the App will ask you to register your device.

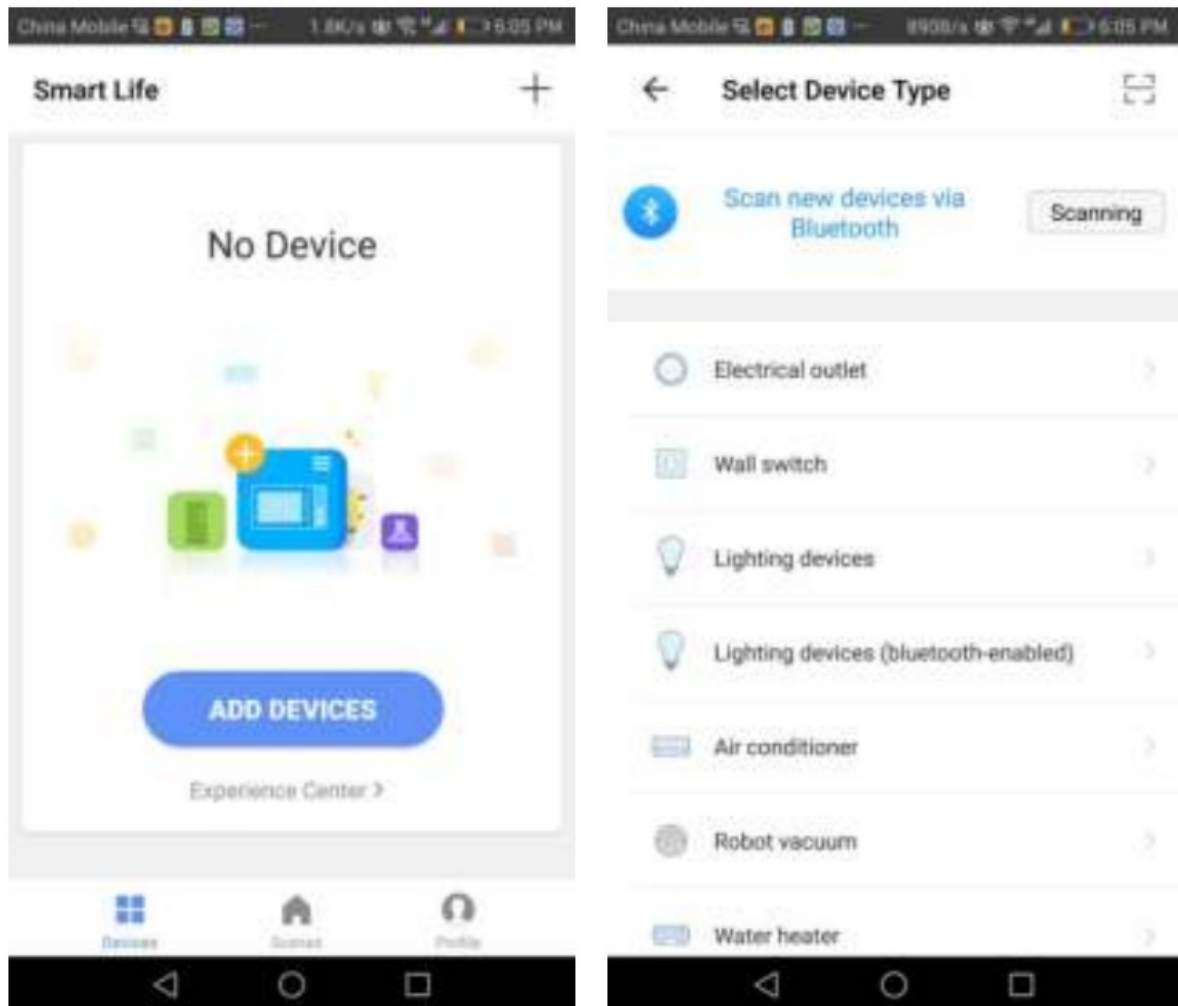


Enter your phone number or email which you prefer and select the country you live in. If phone numbers are

selected you will receive a text with a registration code, if you choose the email you should create a password then.

## How to Adding a New Device in Quick Connection

1. Connect the switch with the power
2. Press the power button on the switch for 6-10 seconds until the red light blinks quickly to reset the switch.
3. Open App and tap “+” and select “wall switch” to add.

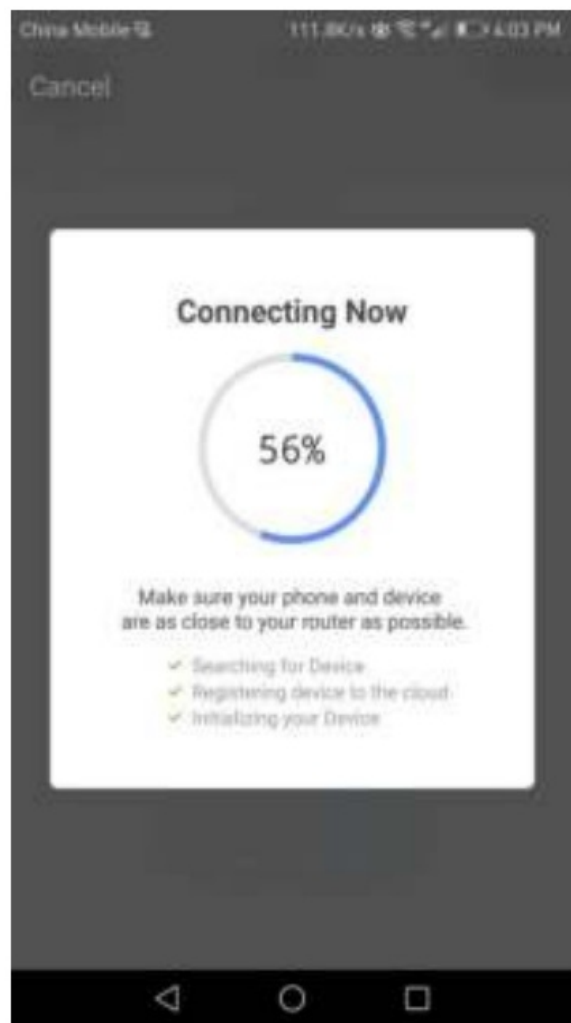
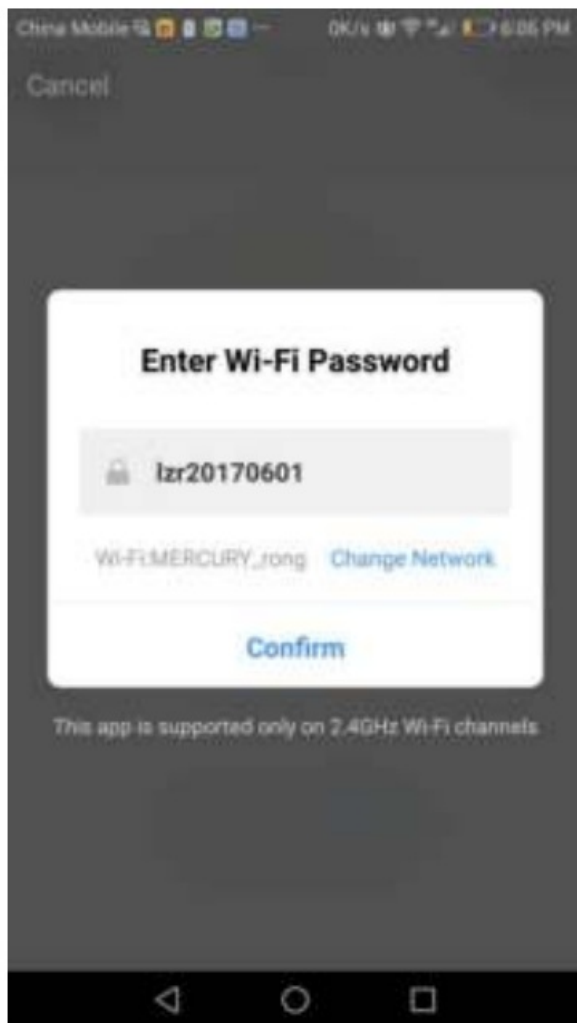


Please make sure power on the device and the blue light Wi-Fi indicator rapidly blink 2 times per second.



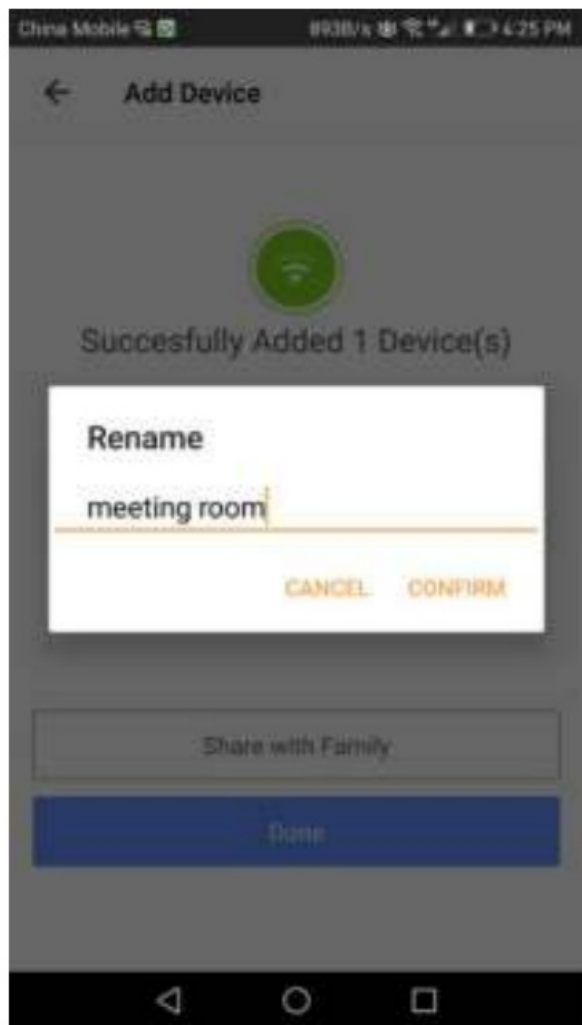
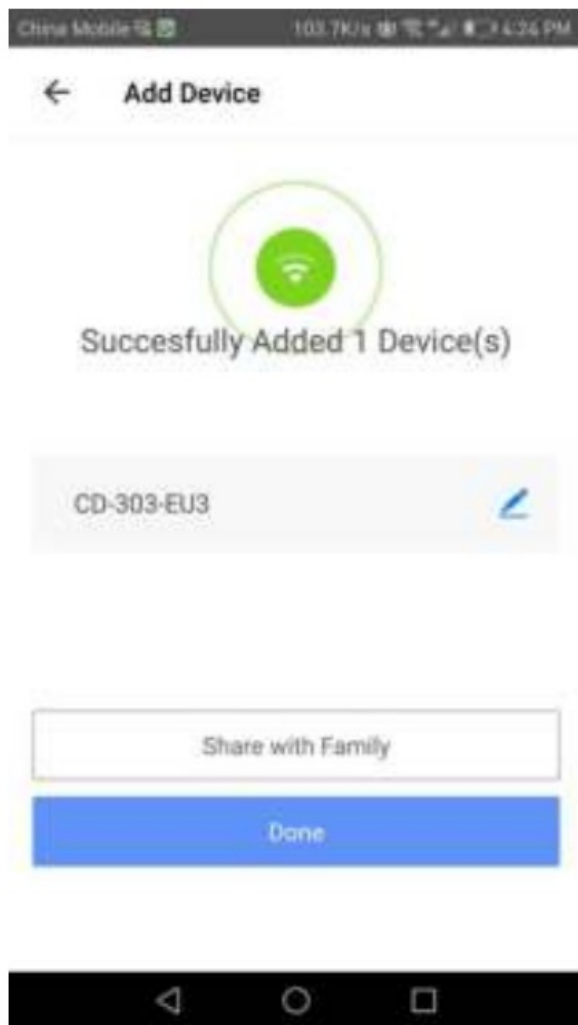
Select the Wi-Fi network, input the Wi-Fi password, and confirm that will prompt the connection





Once connected the app will prompt the connection.

Rename the device such as “Bedroom”, “Kitchen” “meeting room” and so on (Attention: The name should use numeric and letters, don’t use special symbols.)

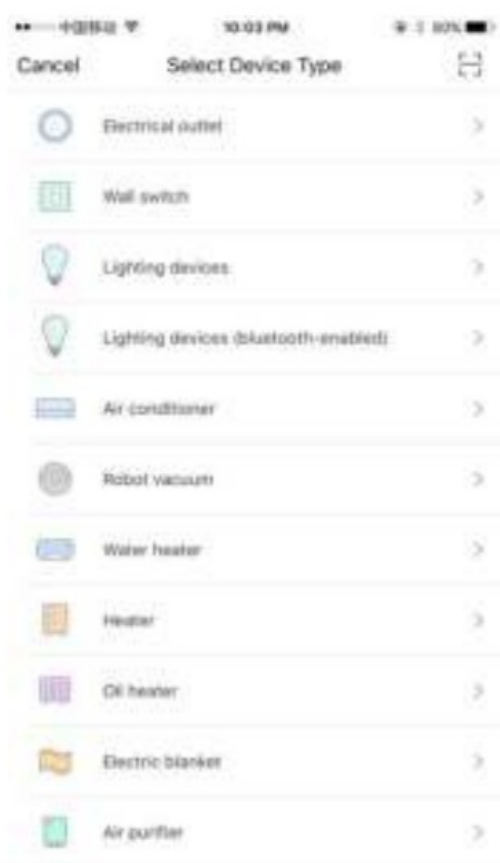


Then tap “Confirm”, then tap “Done” under Rename, if you want to share, choose “Share with Family”.



### Adding a New Device in AP Mode

- Press the power button on the switch until the Wi-Fi indicator slowly blinks (1 time in 3 seconds).
- Press “+” in the main menu of the APP and select “wall switch” to add.



Tap "AP Mode" and "Confirm indicator slowly blink"

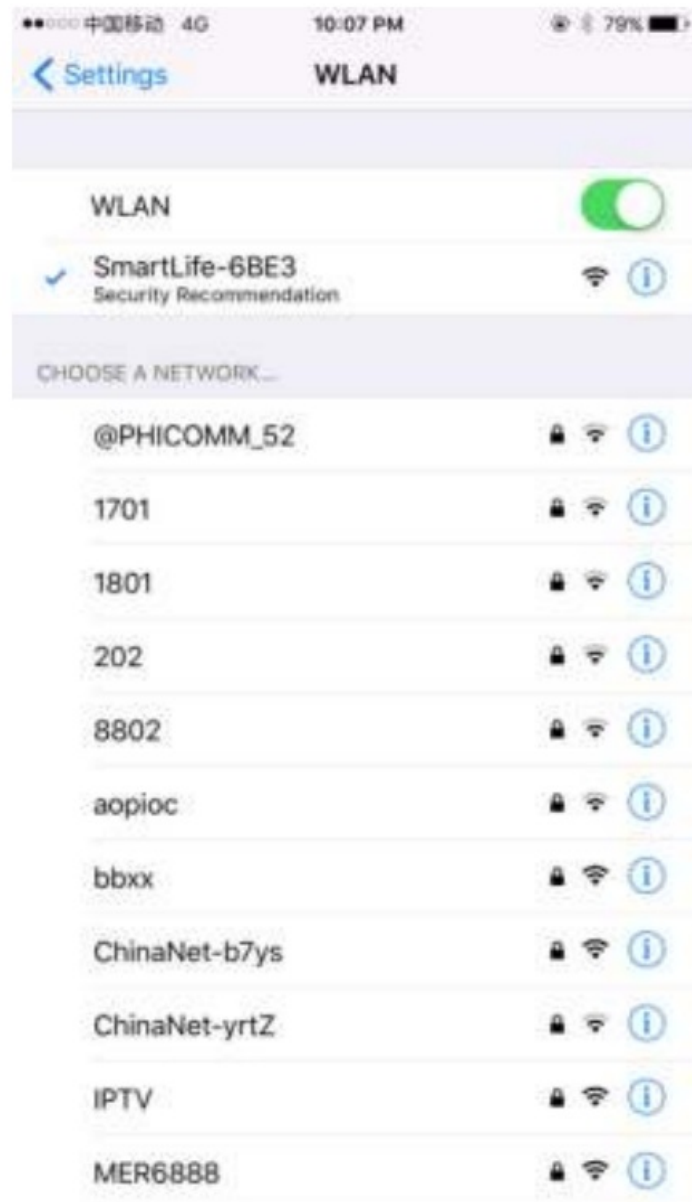


Select Wi-Fi and input the Wi-Fi password, press “Confirm”

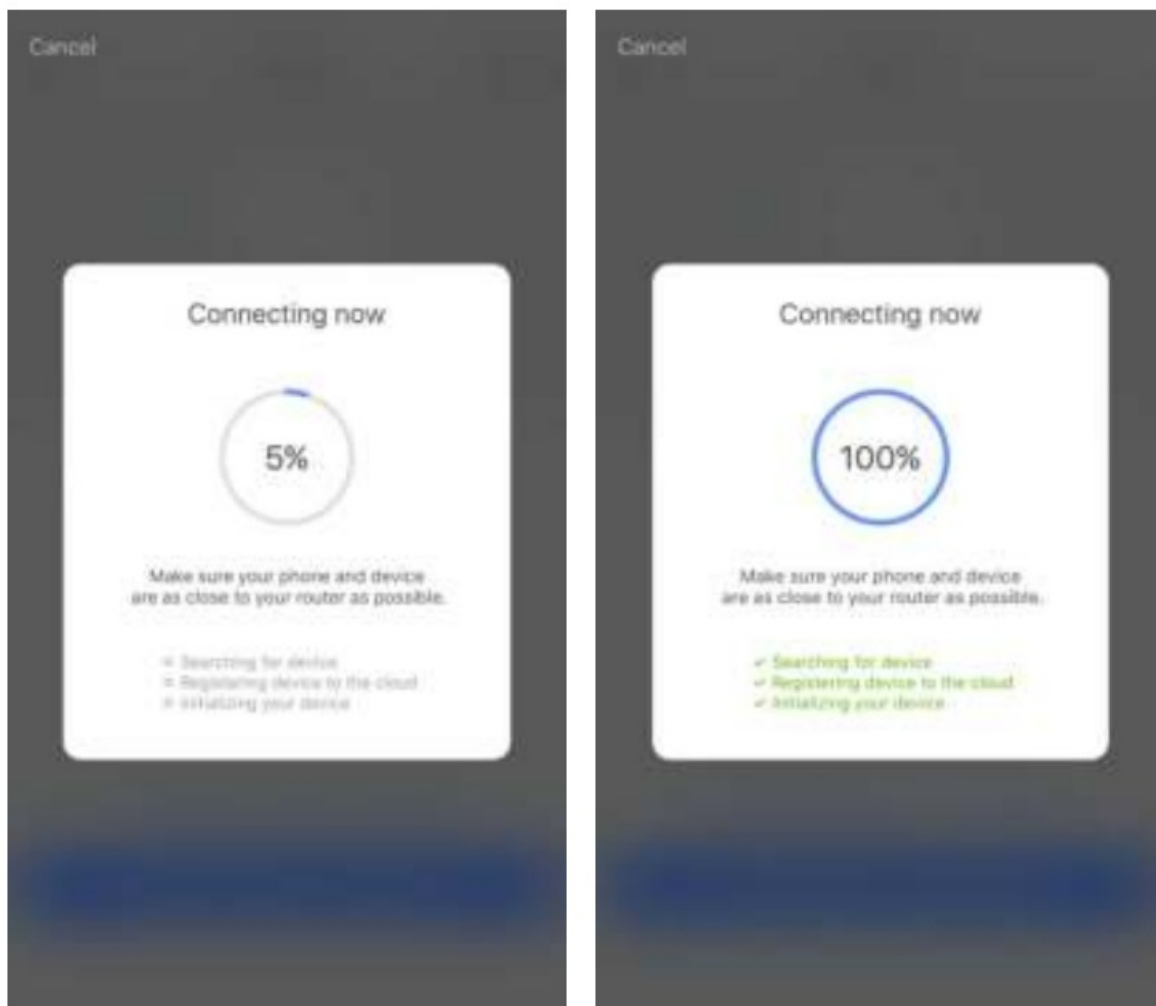


**Press “ Connect Now”**



To go WLAN setting in your smartphone and select the “SmartLife XXX” for your Wifi, no need to input a password once you select the “SmartLifeXXX” (You can directly connect it if your OS is Android).



Go back to APP, press “Connect” switch “SmartLife-XXX”, and confirm the device.



## Documents / Resources

<p>Smart WiFi Wall Switch User Manual</p>  	<p><a href="#">MOES WiFi Smart Light Switch Push Button</a> [pdf] User Manual WiFi Smart Light Switch Push Button</p>
---	---