

# MOES WiFi Plus BLE Smart Plug Socket Instruction Manual

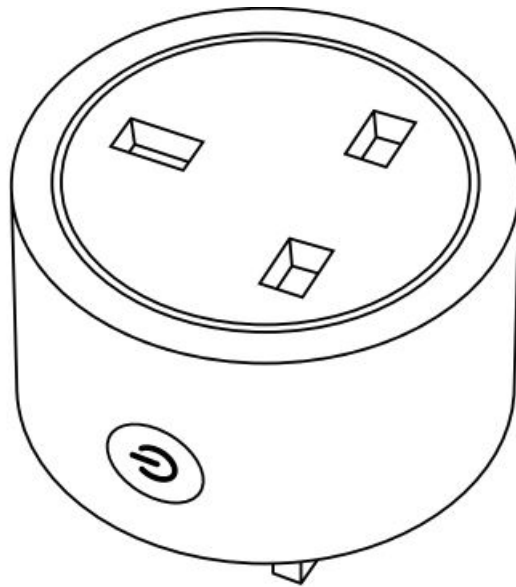
[Home](#) » [MOES](#) » MOES WiFi Plus BLE Smart Plug Socket Instruction Manual 

## Contents

- [1 MOES WiFi Plus BLE Smart Plug Socket](#)
- [2 Description](#)
- [3 Safety Information](#)
- [4 Specification](#)
- [5 Steps for connecting the APP to the device](#)
- [6 Enter Smart Life Skill in Alexa APP](#)
- [7 SERVICE](#)
- [8 RECYCLING INFORMATION](#)
- [9 WARRANTY CARD](#)
- [10 Documents / Resources](#)
  - [10.1 References](#)



## MOES WiFi Plus BLE Smart Plug Socket



## Product Information

This smart socket is compatible with the Tuya platform and can easily connect to your home Wi-Fi network. You can plug any electric appliance directly into the smart socket for wireless control.

**Safety Information:** Electricity can cause personal injury and property damage if handled improperly. If you are not sure about any part of these instructions, please seek professional assistance from a qualified electrician.

## Specification:

- Electrical Rating: 100~250V AC, 50Hz
- Working Temp: -20~50
- Wireless Type: WiFi 2.4GHz & Bluetooth
- App Support: iOS/Android

## Product Usage Instructions

1. Download and install the Smart Life app by scanning the QR code or downloading it from the App Store.
2. Register or log in to the app using your mobile number or email address. Obtain the verification code.
3. Make sure your phone is connected to a 2.4G Wi-Fi network and Bluetooth is enabled.
4. Initiate quick mode configuration by ensuring that the indicator light on the Smart Plug blinks blue rapidly (twice per second). If it blinks blue slowly (once every 3 seconds), press and hold the power button on the Smart Plug for 6 seconds until the indicator light blinks rapidly.
5. Open the Smart Life/Tuya app and tap the “+” button. Follow the prompts to add the device. Enter the Wi-Fi password when prompted and wait for the connection to be completed.
6. Once the device is successfully added, you can edit its name and access its control page.
7. Click “Done” to enter the device page and start enjoying your smart life with home automation.
8. If you want to integrate the device with Alexa, follow the instructions below.
9. In the Alexa app, complete the product networking configuration according to the prompts. Change the name of the device to an easily identifiable name, such as “Alexa”.
10. Configure your Amazon Echo device by ensuring it is powered on and connected to a Wi-Fi network.
11. Open the Alexa app on your phone and log in. Tap on the menu in the upper left corner, select “Settings,” and

tap “Set Up A New Device” to set up the Amazon Echo.

12. Choose your Amazon Echo device type and language for connecting.
13. Press and hold the small dot on the device until the light turns yellow. Click “Continue” to connect to the Amazon Echo hotspot and then connect to your home Wi-Fi network.
14. Wait for the Amazon Echo to connect to the network. Once the connection is successful, tap “Continue” to finish the setup process.
15. An introduction video will appear. After it ends, tap “Continue” to jump to the Alexa home page.

## Description

This smart socket Compatible with Tuya platform that can easily connect to your home Wi-Fi network, plug any electric appliance directly into the smart socket for wireless control.

## Safety Information

Risk of Electric Shock: Electricity can cause personal injury and property damage if handled improperly. If you are not sure about any part of these instructions, please seek professional assistance from a qualified electrician.

## Specification

**Electrical Rating:** 100~250V AC,50Hz

**Working Temp:** -20~50°C

**Wireless Type:** WiFi 2.4GHz & Bluetooth

**App Support:** iOS/Android

## Steps for connecting the APP to the device

1. APP Download Smart Life APP



Please scan the QR code or download Smart Life on App store.

2. Register or Login



Download “Smart Life” Application

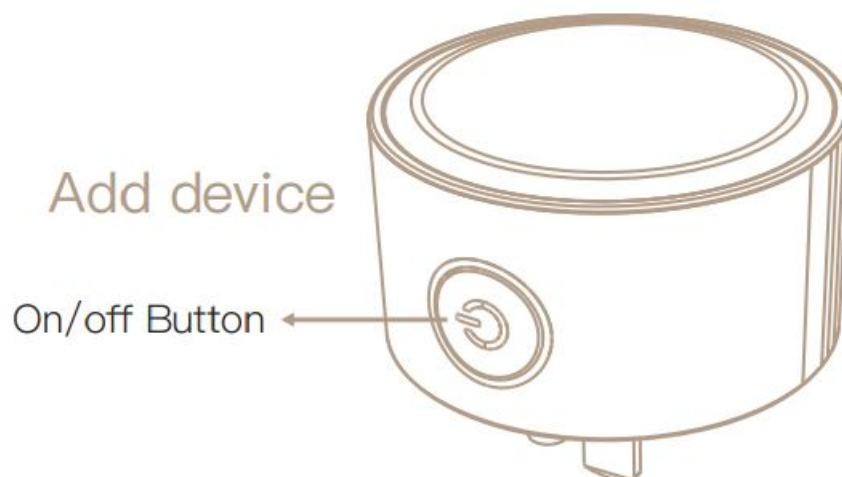
Enter the Register/Login interface; tap “Register” to create an account by entering your phone number to get verification code and “Set password”. Choose “Log in” if you already have a Smart Life account.

### Steps for connecting the APP to the device APP Configuration .

1. Make sure your phone is connected to 2.4G Wi-Fi and the Bluetooth is enabled

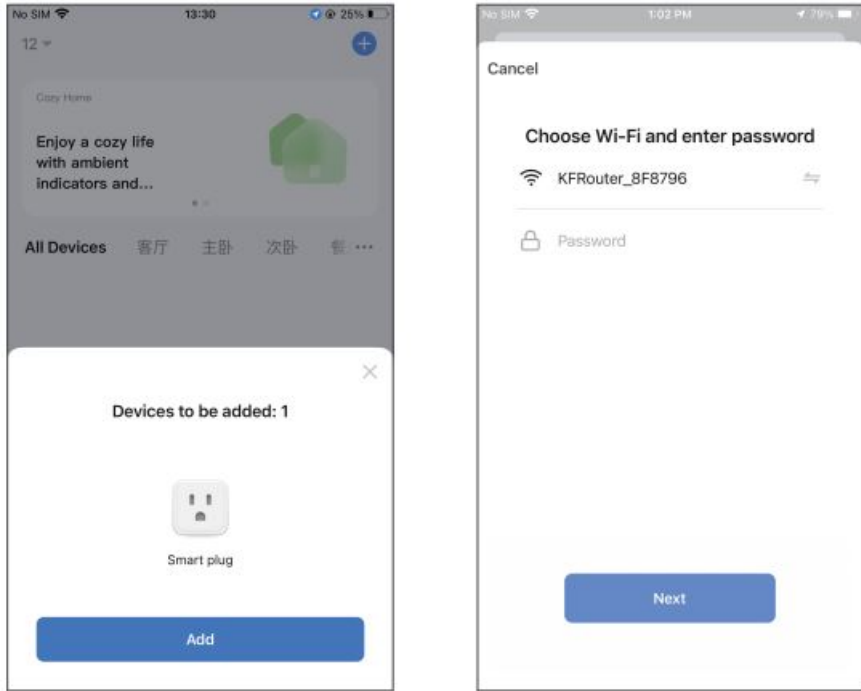


2. Make sure quick mode configuration is initiated: the indicator light blinks blue rapidly (twice per second). If it blinks blue slowly (once every 3 seconds), press and hold the power button on the Smart Plug for 6 seconds until the indicator light blinks rapidly.

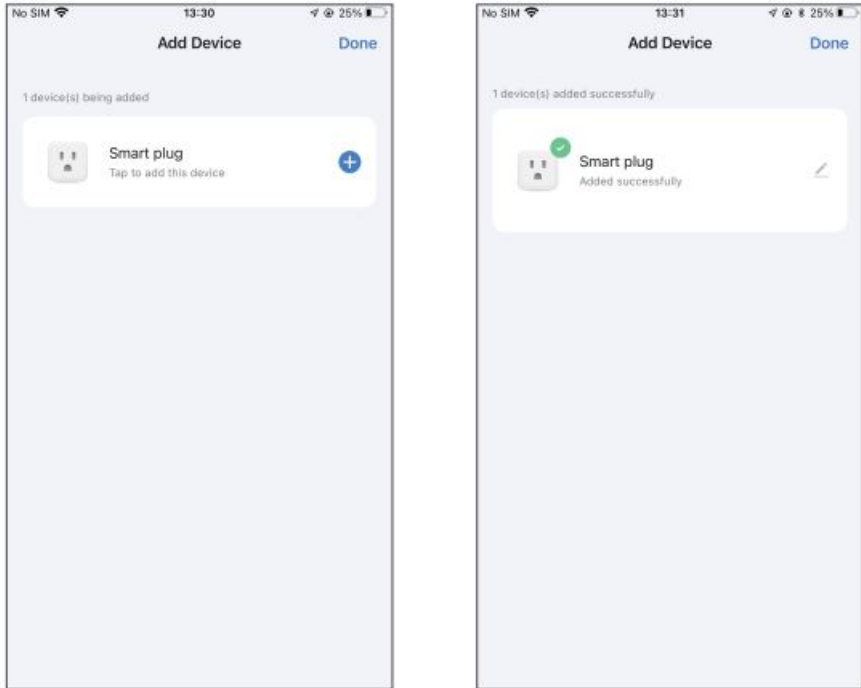


3. Open Smart Life/Tuya App and Click“+”, then the prompt page will automatically show on the screen. Click

“Add”. Enter Wi-Fi Password and click “Next”, waiting for the connection completed.



4. Add the device successfully, you can edit the name of the device to enter the device page by click “Next”



5. Click “Done” to enter the device page to enjoy your smart life with home automation.



## Enter Smart Life Skill in Alexa APP

1. Complete product networking configuration in the App Complete the device's networking configuration according to the prompts in the App. Note: In the App, change the name of the device to an easily identifiable name such as Alexa; names are usually in English, such as "bed light".
2. Configure the Amazon Echo device  
(If you have already configured Amazon Echo, you can skip this step. The following instructions are based on the iOS client.)
  1. Make sure you Amazon Echo device is powered on and connected to a Wi-Fi network.
  2. Open the Alexa APP on your phone and log in.
  3. Tap on the menu in the upper left corner of the Home page, select "Settings" and tap "Set Up A New Device" to set up the Amazon Echo.
  4. Choose your Amazon Echo device type and language for connecting.
  5. Press and hold the small dot on the device until the light turns yellow.
  6. Click "Continue" to connect to the hotspot, connect to the Amazon Echo hotspot, and return to the APP page.
  7. Click "Continue" to find and connect to your home Wi-Fi network.
  8. Amazon Echo will take a few minutes to try to connect to the network.
  9. After the network connection is successful, tap "Continue". An introduction video will appear After the video ends tap "Continue" to jump to the Alexa Home page.
  10. You have now completed the Amazon Echo's configuration process.
3. Key step —— Link Skill
  1. Tap on "Skills" in the Alexa App menu.
  2. Then search for "App Name". Tap "Enable" to enable the Skill.
  3. Enter the App account and password, then tap "LinkNow" to link your App account to enable the Skill.  
Now you can start your smart home journey
  4. Common commands  
Control the device via voice commands, now you can control your smart device with Echo. You can

control your device (such as your bedroom light) with the following commands:

- Alexa, turn on device name
- Alexa, turn off device name

## SERVICE

1. During the free warranty period, if the product breaks down during normal use, we will offer free maintenance for the product.
2. Natural disasters/man-made equipment failures, disassembly and repair without the permission of our company, no warranty card, products beyond the free warranty period, etc., are not within the scope of free warranty.
3. Any commitment (oral or written) made by the third party (including the dealer/service provider) to the user beyond the warranty scope shall be executed by the third party.
4. Please keep this warranty card to ensure your rights.
5. Our company may update or change the products without notice. Please refer to the official website for the updates.

## RECYCLING INFORMATION

All products marked with the symbol for separate collection of waste electrical and electronic equipment (WEEE Directive 2012/19 / EU) must be disposed of separately from unsorted municipal waste. To protect your health and the environment, this equipment must be disposed of at designated collection points for electrical and electronic equipment designated by the government or local authorities.

Correct disposal and recycling will help prevent potential negative consequences for the environment and human health. To find out where these collection points are and how they work, contact the installer or your local authority.

## WARRANTY CARD

### Product Information

Product Name\_\_\_\_\_

Product Type\_\_\_\_\_

Purchase Date\_\_\_\_\_

Warranty Period\_\_\_\_\_

Dealer Information\_\_\_\_\_

Customer's Name\_\_\_\_\_

Customer Phone\_\_\_\_\_

Customer Address\_\_\_\_\_

\_\_\_\_\_

### Maintenance Records

Failure date	Cause Of Issue	Fault Content	Principal

Thank you for your support and purchase at we Moes, we are always here for your complete satisfaction, just feel free to share your great shopping experience with us.



If you have any other need, please do not hesitate to contact us first, we will try to meet your demand.

#### Follow Us



@moessmart



@moes\_smart



MOES.Official



@moes\_smart



@moes\_smart



www.moes.net

[www.moes.net](http://www.moes.net)

#### WENZHOU NOVA NEW ENERGY CO.,LTD

Address: Power Science and Technology Innovation Center, NO.238, Wei 11 Road, Yueqing Economic Development Zone, Yueqing, Zhejiang, China

Tel: +86-577-57186815

Email: [service@moeshouse.com](mailto:service@moeshouse.com)

AMZLAB GmbH Laubenhof 23, 45326 Essen Made In China

#### Documents / Resources



[MOES WiFi Plus BLE Smart Plug Socket](#) [pdf] Instruction Manual

WP-X-UKY15M, WiFi Plus BLE Smart Plug Socket, Smart Plug Socket, Plug Socket, Socket

#### References

-  [MOES Smart: Create Your Smart Life With Smart Home Devices](#)