

MOES MS-104D Smart Switch Module Instruction Manual

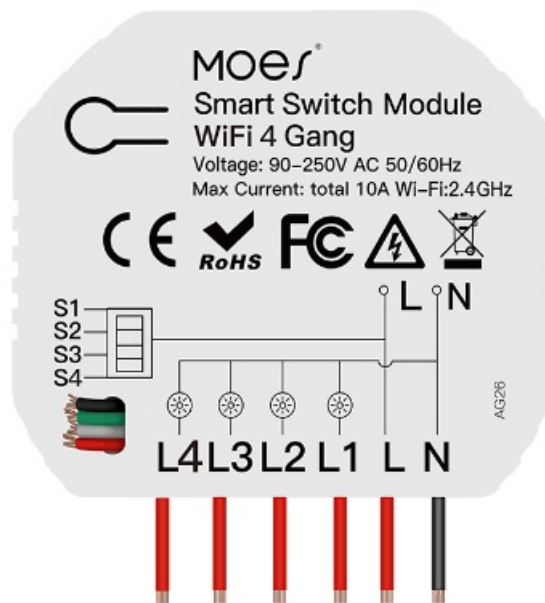
[Home](#) » [MOES](#) » MOES MS-104D Smart Switch Module Instruction Manual 

Contents

- [1 MOES MS-104D Smart Switch Module](#)
- [2 Operation](#)
- [3 INSTALLATION](#)
- [4 TECHNICAL SPECIFICATIONS](#)
- [5 WIRING DIAGRAM](#)
- [6 FAQ](#)
- [7 MANUAL OVERRIDE](#)
- [8 SERVICE](#)
- [9 RECYCLING INFORMATION](#)
- [10 WARRANTY CARD](#)
- [11 Documents / Resources](#)
 - [11.1 References](#)
- [12 Related Posts](#)

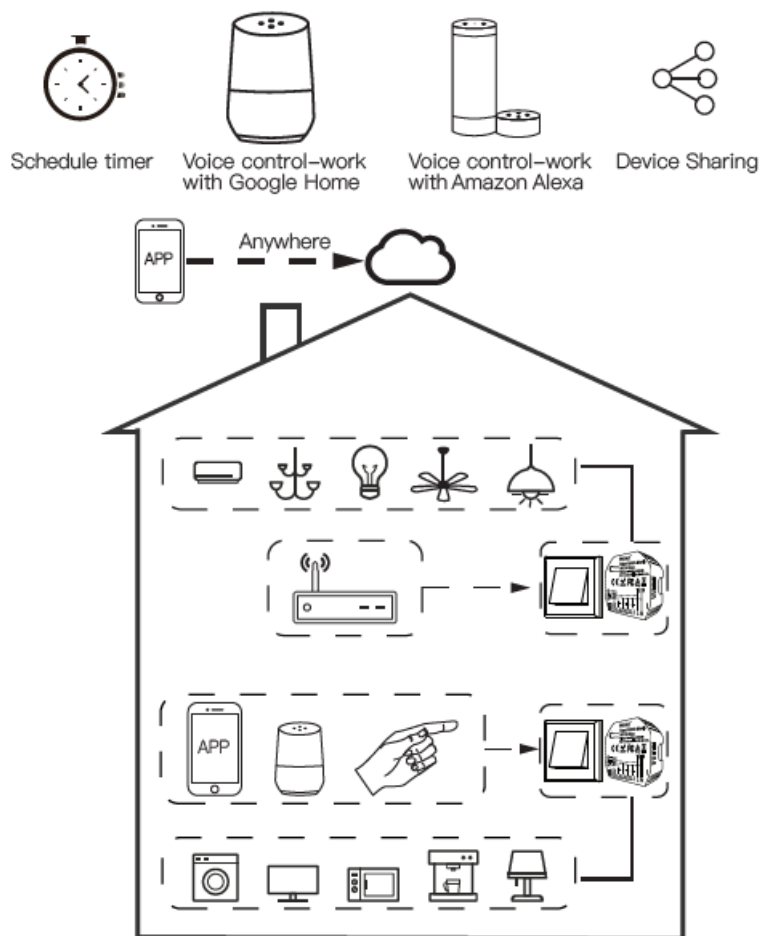


MOES MS-104D Smart Switch Module



Operation

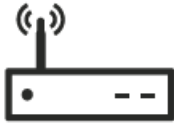
Global international operation Whenever & Wherever You are, All-in-one Mobile App



Inhouse local operation



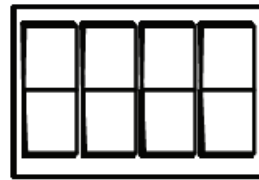
App



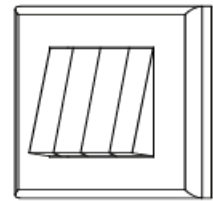
Router



Voice control

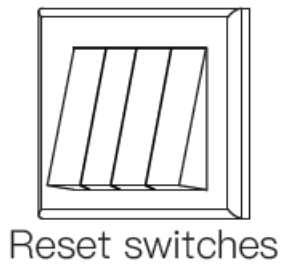


Rocker switches

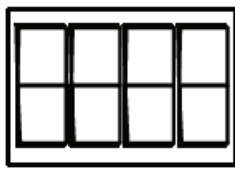


Reset switches

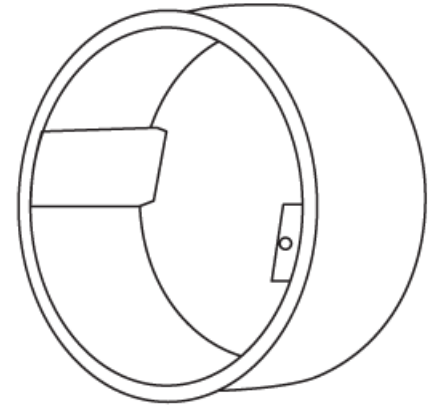
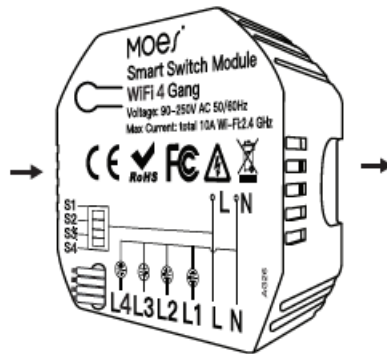
(Note: Chosen from App as rocker switch default)



Reset switches



Rocker switches



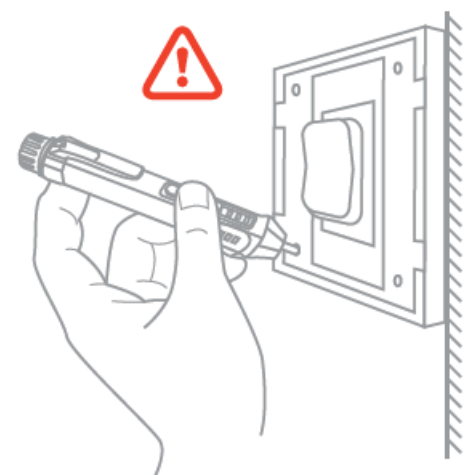
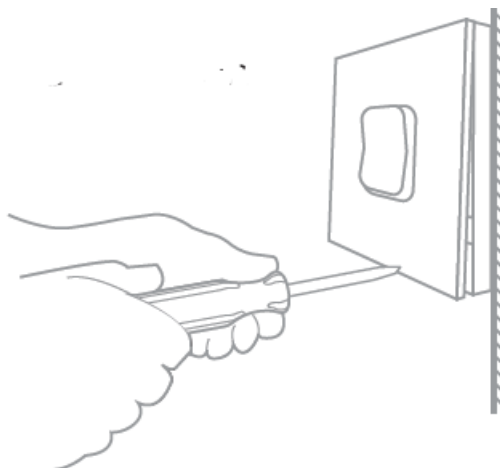
Step 1

- Turn off the circuit breaker and use the electrical tester to test the power.
- Ensure the switch is off before wiring.



Step 2

Remove the old switch



Step 3

Remove the switch and pull it away from the wall. identify Line/Load Wire(**Note:** The color of your wire may be different from the color shown on the manual.)

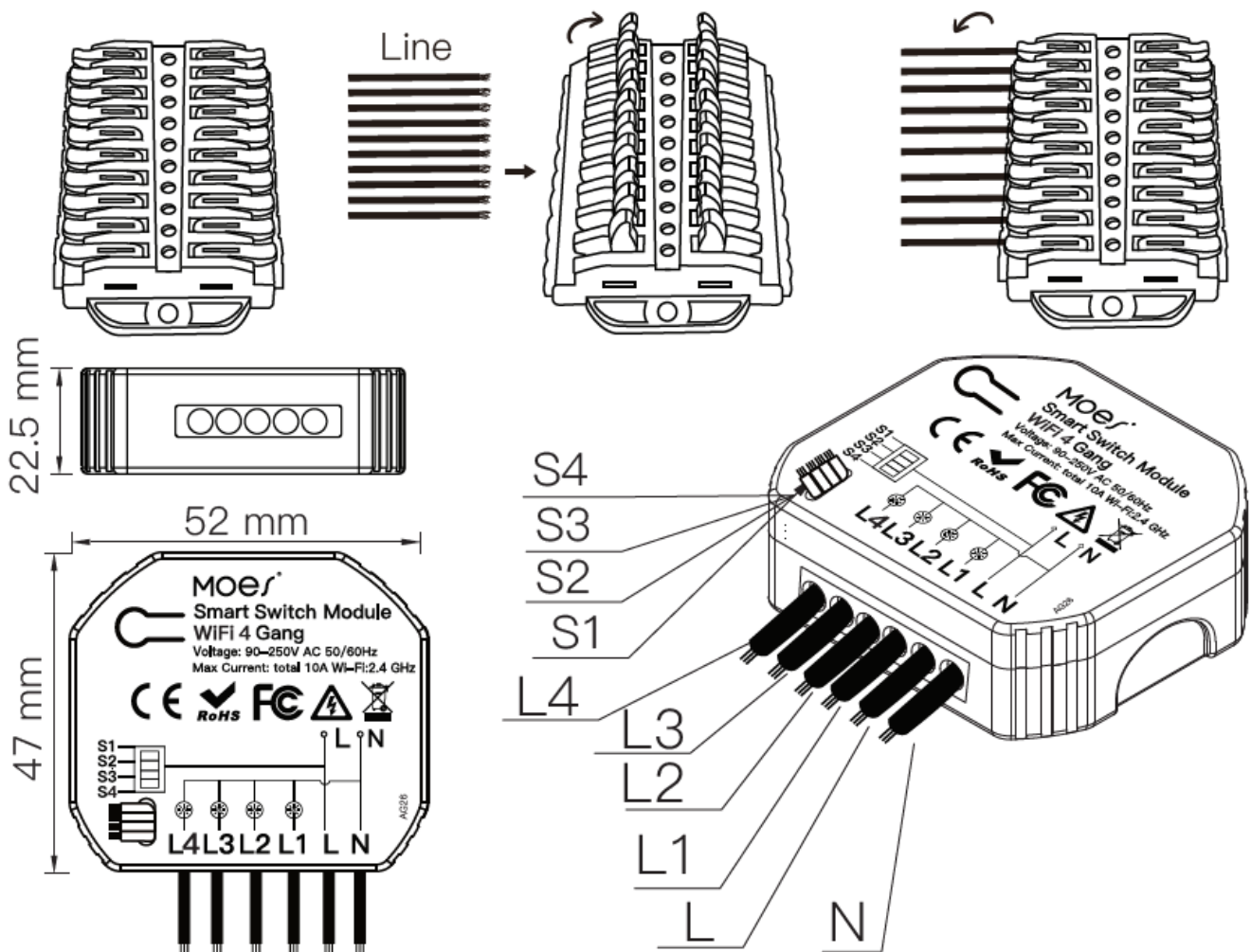
Verify power is off

- We recommend you remove the faceplate from the old switch and use an electrical tester to test all wires connected to the switch to ensure there is no voltage in the circuit.
- You may need to turn off more than one circuit breaker.

INSTALLATION

Warnings:

1. Installation must be carried out by a qualified electrician in accordance with local regulations.
2. Keep the device out of the reach of children.
3. Keep the device away from water, damp or hot environments.
4. Install the device away from strong signal sources such as microwave oven that may cause signal interruption resulted in abnormal operation of the device.
5. Obstruction by concrete wall or metallic materials may reduce the effective operation range of the device and should be avoided.
6. Do NOT attempt to disassemble, repair or modify the device.

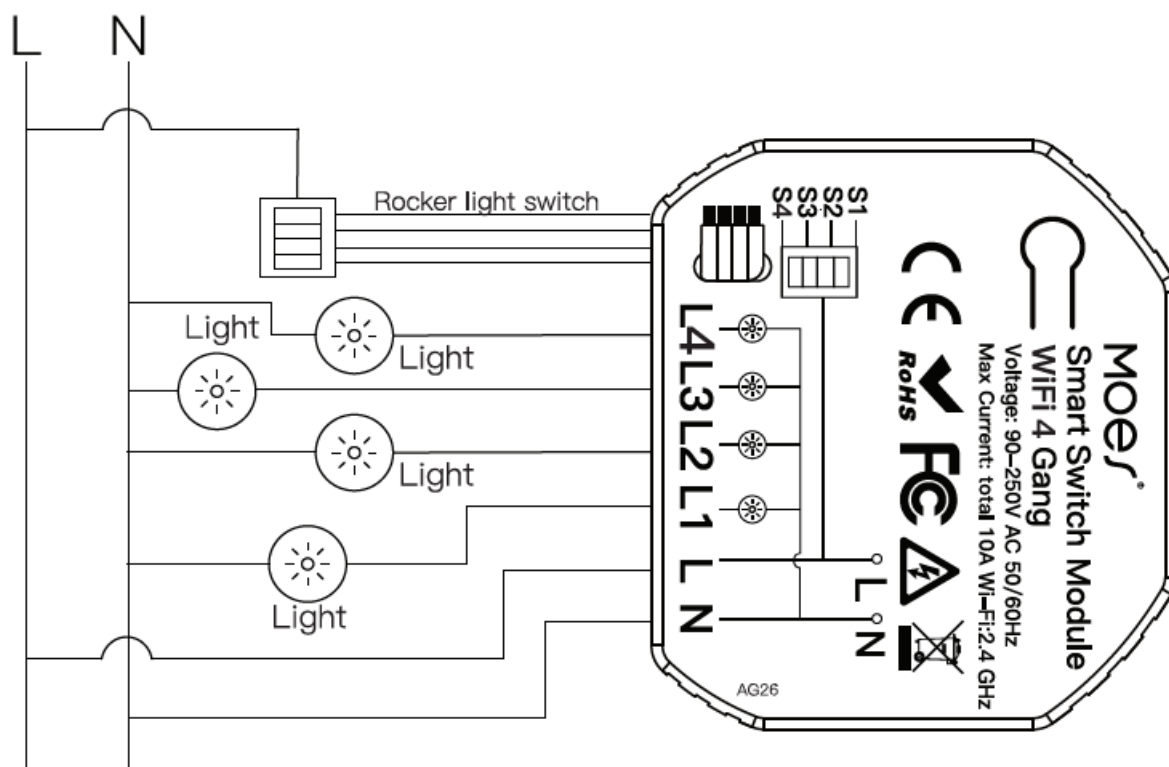


TECHNICAL SPECIFICATIONS

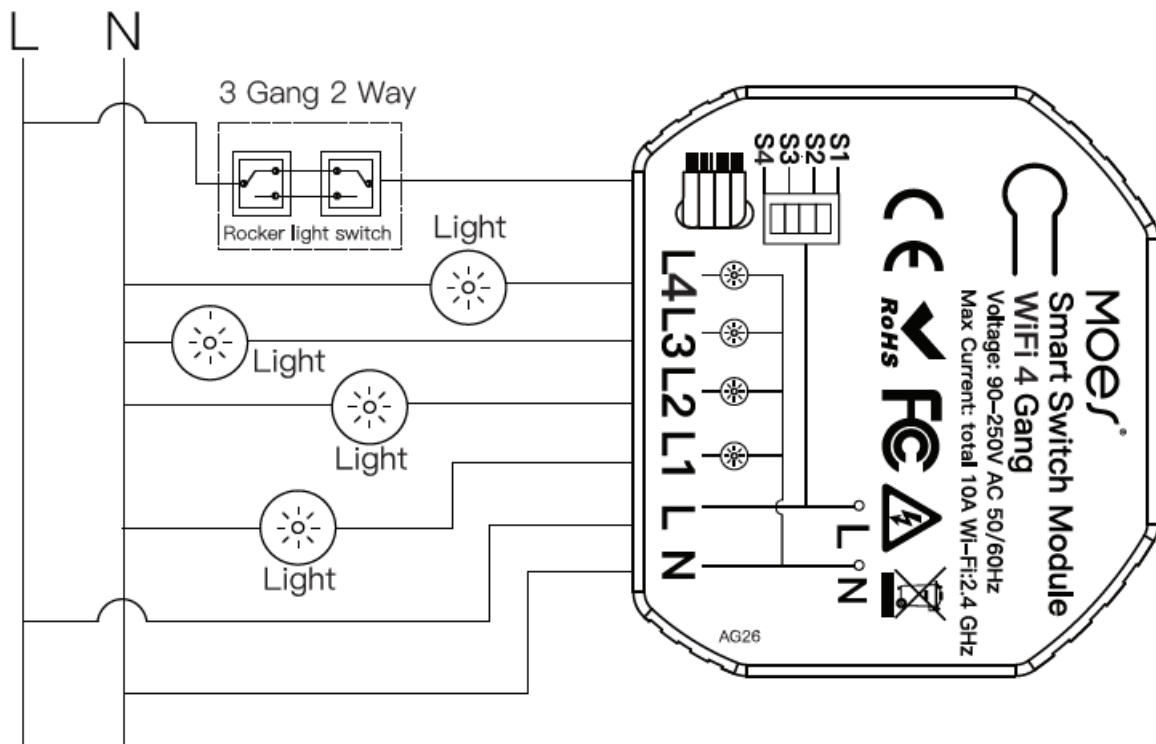
Product type	4 Gang Smart Switch Module
V oltage	90-250V AC 50/60Hz
Max current	Total 10A
Wireless protocol	Wi-Fi 2.4GHz
Operation temp.	-10°C – +40°C
Case temp.	Tc: +80°C (Max.)
Operation range	≤ 200 m
Dims (WxDxH)	52x47x22.5 mm
IP rating	IP20

WIRING DIAGRAM

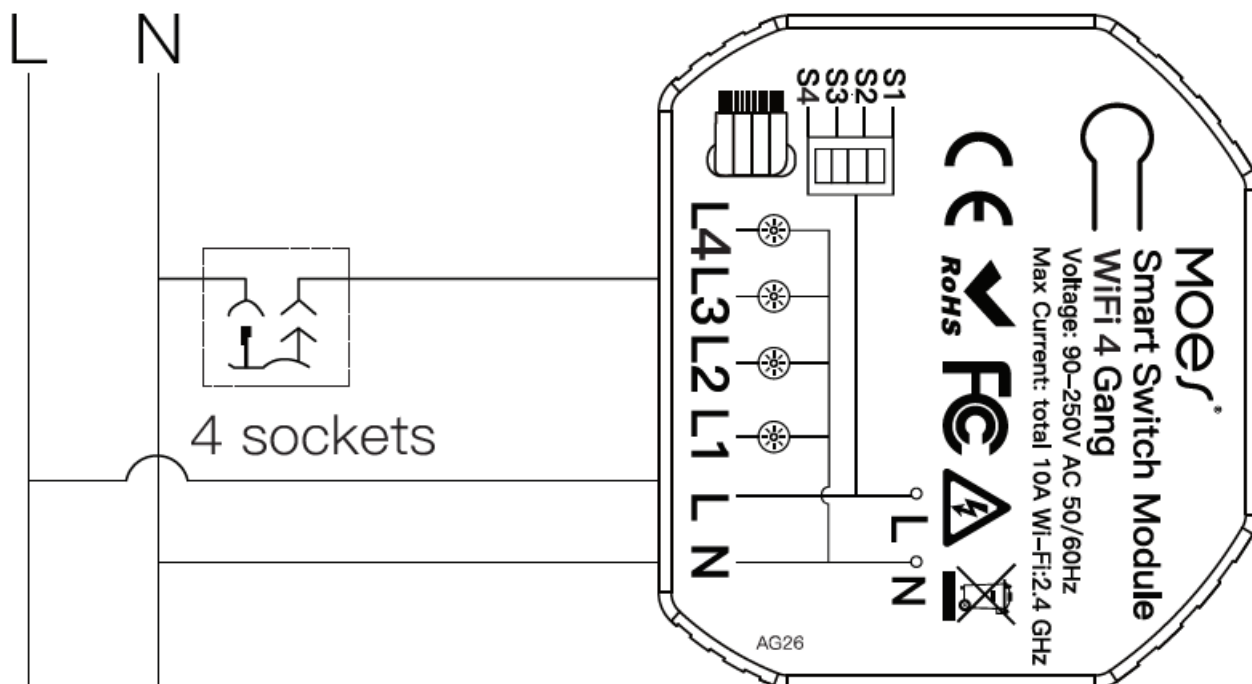
1. With one 4 Gang switch



2. With 4 Gang 2 Way switches



3. With Wall Socket(4 sockets available)



Wiring Instructions and Diagrams

1. Turn off the power supply before carrying out any electrical installation work.
2. Connect wires according to the wiring diagram.
3. Insert the module into the junction box.
4. Connect the power supply and follow switch module configuration instructions.

Note: Put your smartphone close to the switch module when you're configuring, and make sure you have min. 50% Wi-Fi signal.

FAQ

Q1: What should I do if I can't configure the switch module?

- Please check whether device is powered on.
- Make sure your mobile and switch module are under the same 2.4 GHz WiFi network.
- Whether it's in good internet conditions.
- Make sure the password entered in App is correct.
- Make sure the wiring is correct.

Q2: What device can be connected to this WiFi switch module?

Most of your household electrical appliances can be, such as lamps, laundry machines, coffee maker, etc. And only rocker light switch, touch switch and socket can be connected to the switch module.

Q3: What happens if the WiFi goes off?

You can still control the device connected to the switch module with your traditional switch and once WiFi is active again the device connected to module will connect automatically to your WiFi network.

Q4: What should I do if I change the WiFi network or change the password?

You have to re-connect our WiFi switch module to the new WiFi network according to the App User Manual.

Q5: How do I reset the device?

Press the rocker light switch ON/OFF cycle for 5 times until the beeper on the module sounds continuous.
(Confirm your light is on to operate)

MANUAL OVERRIDE

The switch module terminal reserves the access of manual override function for the end-user to switch on/off.

- Switch on/off for permanent on/off function.

Notes:

1. Both the adjustment on App and switch can be reset, the last adjustment remains in memory.
2. The App control is synchronized with the manual switch.

APP USER MANUAL



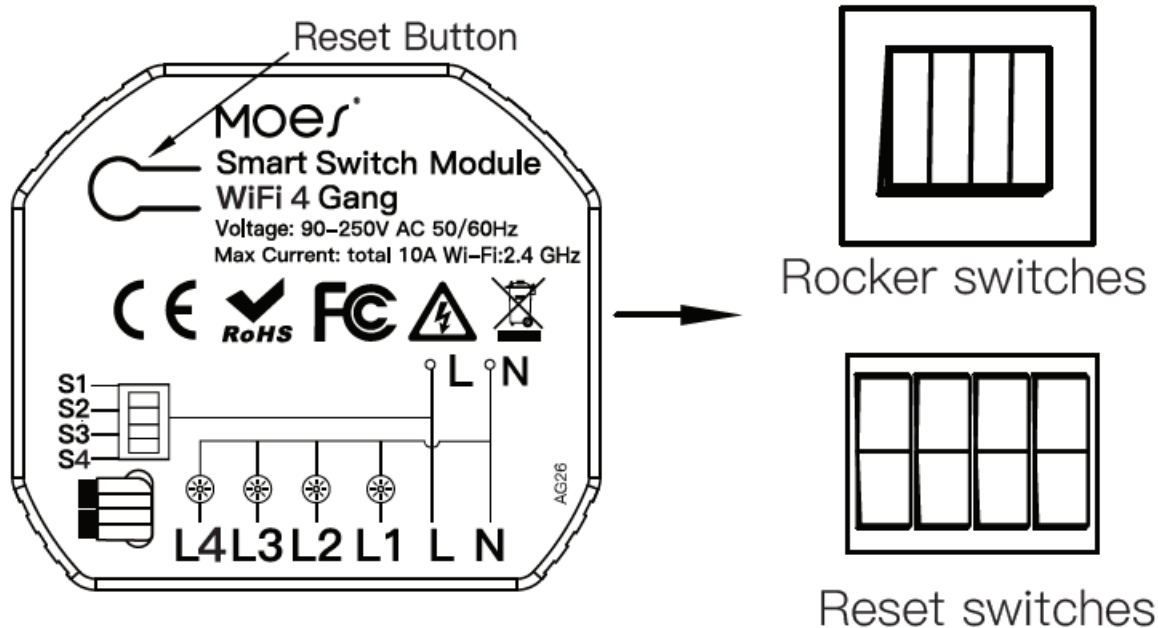
iOS App / Android App

iOS App / Android App

Scan the QR code to download Smart Life App, or you can also search keyword “Smart Life” at App Store or Google play to download App.



Log in or register your account with your mobile number or e-mail address. Type in the verification code sent to your mobile or mail box, then set your login password. Click “Create Family” to enter into the App.



Wi-Fi link method:(two pairing methods)

Complete the wiring of the switch module before pairing

How to reset Wi-Fi code

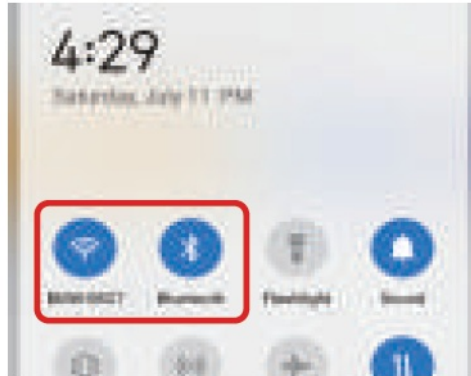
- **For rocker light switch:** press the switch button for 10 times (ON/OFF cycle for 5 times) until the beep sounds continuously and rapidly as Di-Di-Di... for pairing and reset mode.
- **For reset light switch:** press the switch button for 5 times until the beep sounds continuously and rapidly as

Di-Di-Di... for pairing and reset mode.

- **For switch module:** long press the reset button on the module until you hear the beep sounds continuously and rapidly as Di-Di-Di...

Method one: Pair and clear up the WiFi code with Bluetooth and WiFi connected meantime. (New Updated)

1. Make sure your phone is connected to Wi-Fi and Bluetooth.



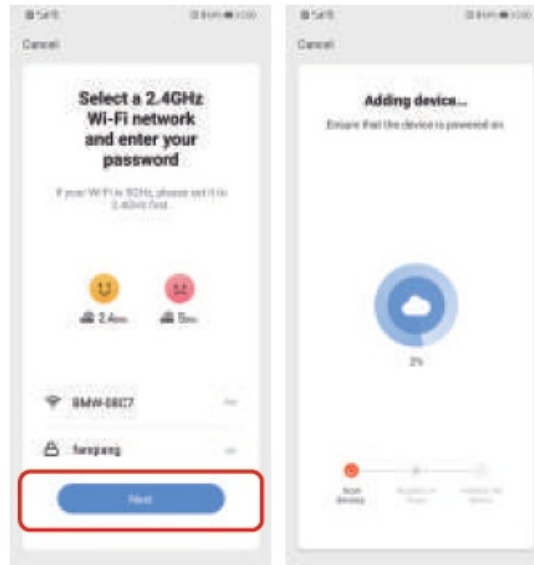
2. Open Smart Life/Tuya App and Click "+", then the prompt page will automatically show on the screen. Click "Go to add".



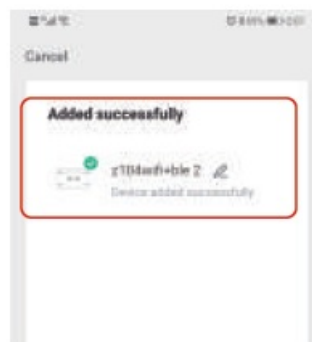
3. Select the device you want to add and click "+"



4. Enter Wi-Fi Password and click "Next", waiting for completing the connection.

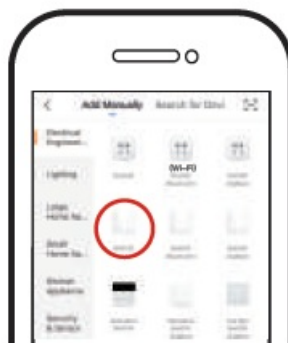


5. Add the device successfully, you can edit the name of the device to enter the device page by click **“Done”**

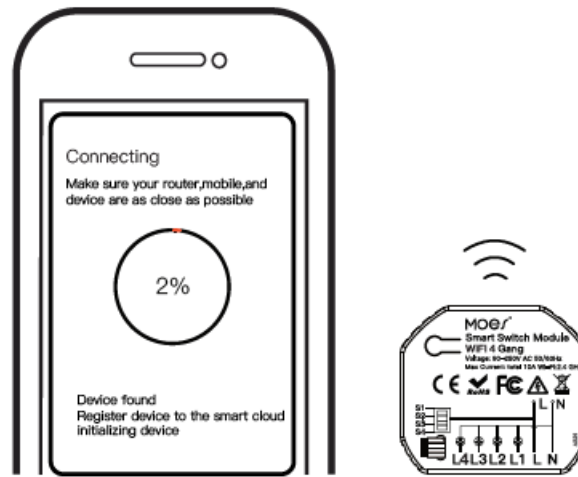


Method two: Pair with traditional pairing method. After the wiring of switch module is done.

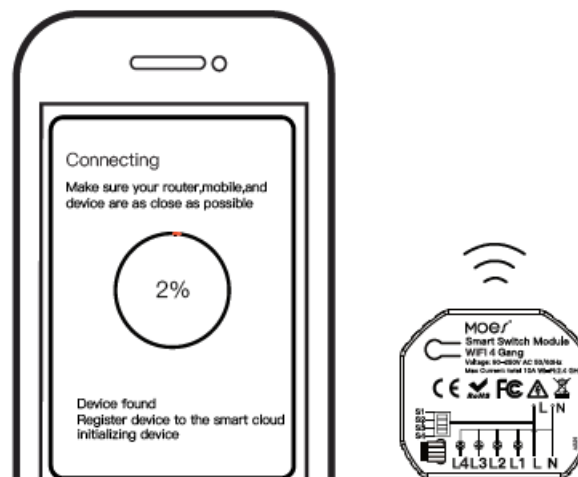
- For rocker light switch: press the switch button for 10 times (ON/OFF cycle for 5 times) until the beep sounds continuously and rapidly as Di-Di-Di... for pairing and reset mode.
- For reset light switch: press the switch button for 5 times until the beep sounds continuously and rapidly as Di-Di-Di... for pairing and reset mode.
- For switch module: long press the reset button on the module until you hear the beep sounds continuously and rapidly as Di-Di-Di...



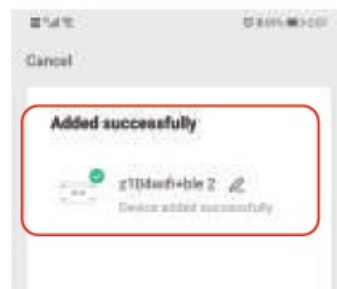
Open the App, select “+” on top right and choose “Switch (Wi-Fi)” to add device.



Make sure your smart phone and WiFi switch module are under the same WiFi network at 2.4GHz connection. Confirm when the switch module beeping rapidly.



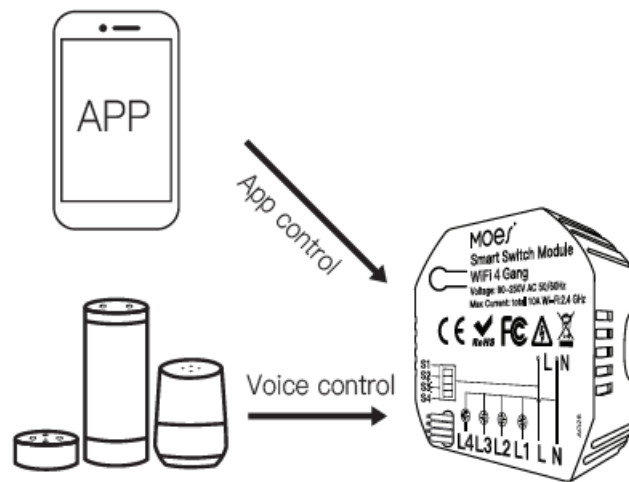
The connecting will take about 10-120 seconds to complete depending on your network condition.



When pairing is done, the switch will be shown on the App.



Connect to Amazon Alexa or Google Assistant for voice control, or share the devices with your families or friends.



Enjoy your smart life of home automation for lighting control by using our All-in-one mobile App wherever you are in the world or simply by voice control when you are sitting at home comfortably.

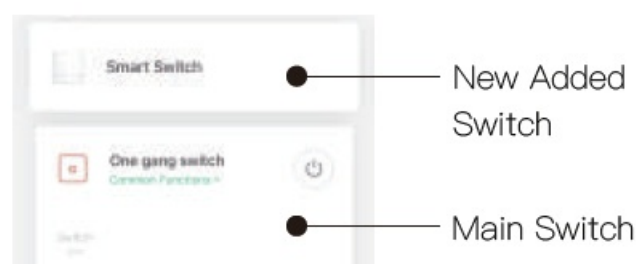
How to achieve multi-control association

Note: Please confirm you have successfully finished the WiFi link method above for adding this switch to your Smart Life App before the association.

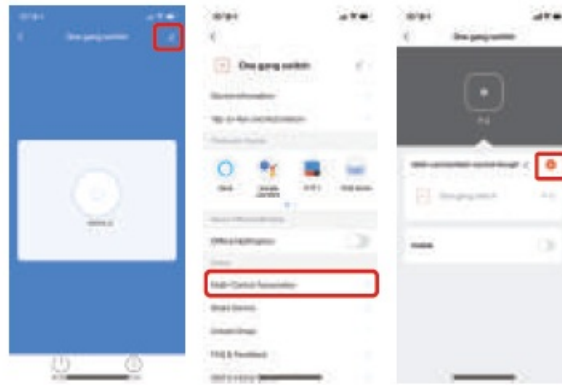
1. WiFi adds another smart switch to the same Smart Life/Tuya App.(If there is a smart switch having been added before to the app,just go to next step.)

Note: There is no need to wire the new added switch to the light,only L and N are required for wiring.

2. Then you will see two devices in the app and click the main switch(as One gang switch as below) by entering into the next operation.

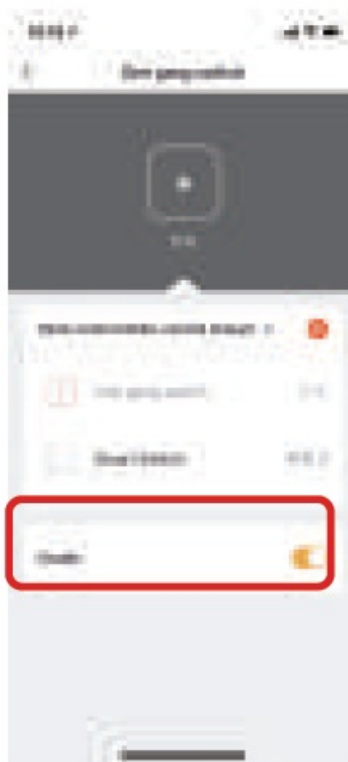


3. Click  in the upper right corner and choose "Multi-Control Association, and then click "+" in the right corner

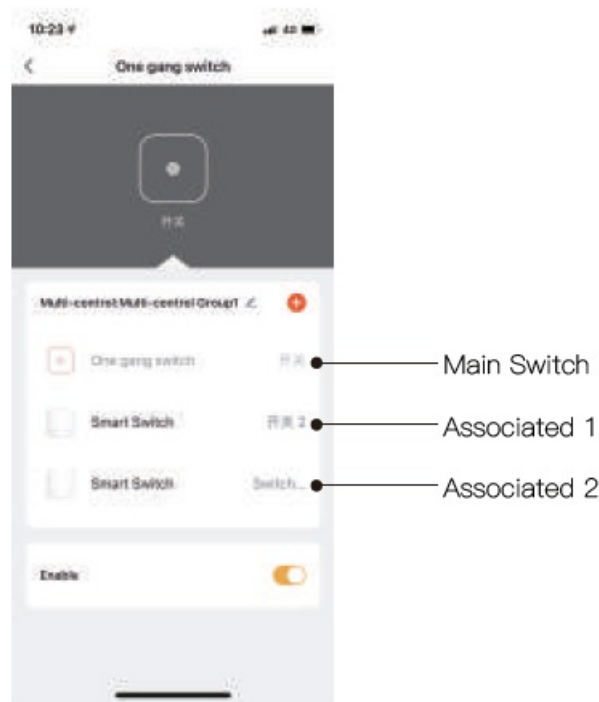


4. Choose the switch that you want to associate to and then choose the switch button that you want to control the same light.
5. Then go back to previous page,you will see two items in the page,one is your main switch,the other is the one you associate just now.

Note: Please confirm the associated switch is enabled.



6. Now you are able to control your light with two switches.Do not associate another button in the same switch for multi-control.
7. If you want to add another third or more smart switches to control your light,just repeat the steps above.And you will see the result as below when you associate another new switch.



SERVICE

1. During the free warranty period, if the product breaks down during normal use, we will offer free maintenance for the product.
2. Natural disasters/man-made equipment failures, disassembly and repair without the permission of our company, no warranty card, products beyond the free warranty period, etc., are not within the scope of free warranty
3. Any commitment (oral or written) made by the third party (including the dealer/service provider) to the user beyond the warranty scope shall be executed by the third party
4. Please keep this warranty card to ensure your rights
5. Our company may update or change the products without notice. Please refer to the official website for the updates.

RECYCLING INFORMATION



All products marked with the symbol for separate collection of waste electrical and electronic equipment (WEEE Directive 2012/19 / EU) must be disposed of separately from unsorted municipal waste. To protect your health and the environment, this equipment must be disposed of at designated collection points for electrical and electronic equipment designated by the government or local authorities. Correct disposal and recycling will help prevent potential negative consequences for the environment and human health. To find out where these collection points are and how they work, contact the installer or your local authority.

WARRANTY CARD

Product Information

Product Name _____

Product Type _____

Purchase date _____

Warranty Period _____

Dealer Information _____
Customer's Name _____
Customer Phone _____
Customer Address _____

Maintenance Records

Failure date	Cause Of Issue	Fault Content	Principal

Thank you for your support and purchase at we Moes,we are always here for your complete satisfaction,just feel free to share your great shopping experience with us.

If you have any other need,please do not hesitate to contact us first,we will try to meet your demand.

Facebook: @moessmart

Twitter: @moes_smart

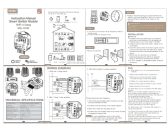
Instagram: @moes_smart

Youtube: moes

Tiktok: @moes_smart

Web: www.moes.net

Documents / Resources

	MOES MS-104D Smart Switch Module [pdf] Instruction Manual MS-104D Smart Switch Module, MS-104D, Smart Switch Module, Switch Module, Module
---	---

References

-  [MOES Smart WiFi ZigBee Smart 2/3 Way Switch Socket Thermostat Sensor](#)