

## Moes MS-104 WiFi Plus RF Switch Module Instruction Manual

[Home](#) » [MOES](#) » Moes MS-104 WiFi Plus RF Switch Module Instruction Manual 

### Contents

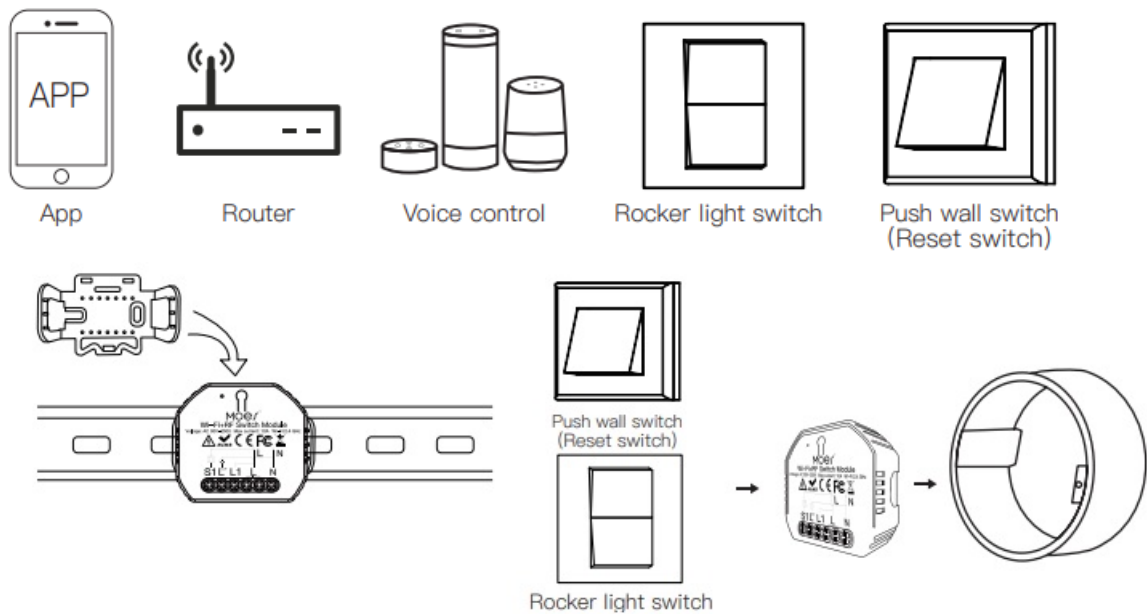
- [1 Moes MS-104 WiFi Plus RF Switch Module](#)
- [2 Operation](#)
- [3 INSTALLATION](#)
- [4 TECHNICAL SPECIFICATIONS](#)
- [5 WIRING DIAGRAM](#)
- [6 FAQ](#)
- [7 MANUAL OVERRIDE](#)
- [8 Pair and clear up the RF code](#)
- [9 Documents / Resources](#)
  - [9.1 References](#)
- [10 Related Posts](#)



**Moes MS-104 WiFi Plus RF Switch Module**



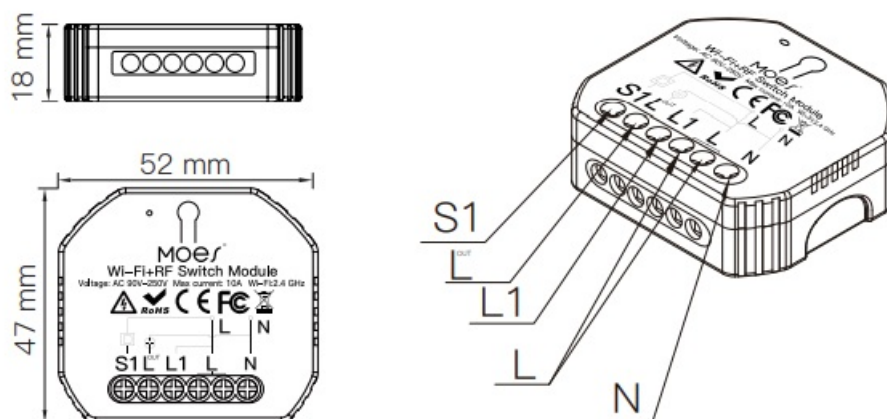
## Inhouse local operation



## INSTALLATION

### Warnings:

1. Installation must be carried out by a qualified electrician in accordance with local regulations.
2. Keep the device out of the reach of children.
3. Keep the device away from water , damp or hot environment.
4. Install the device away from strong signal sources such as microwave oven that may cause signal interruption resulted in abnormal operation of the device.
5. Obstruction by concrete wall or metallic materials may reduce the effective operation range of the device and should be avoided.
6. Do NOT attempt to disassemble,repair or modify the device.



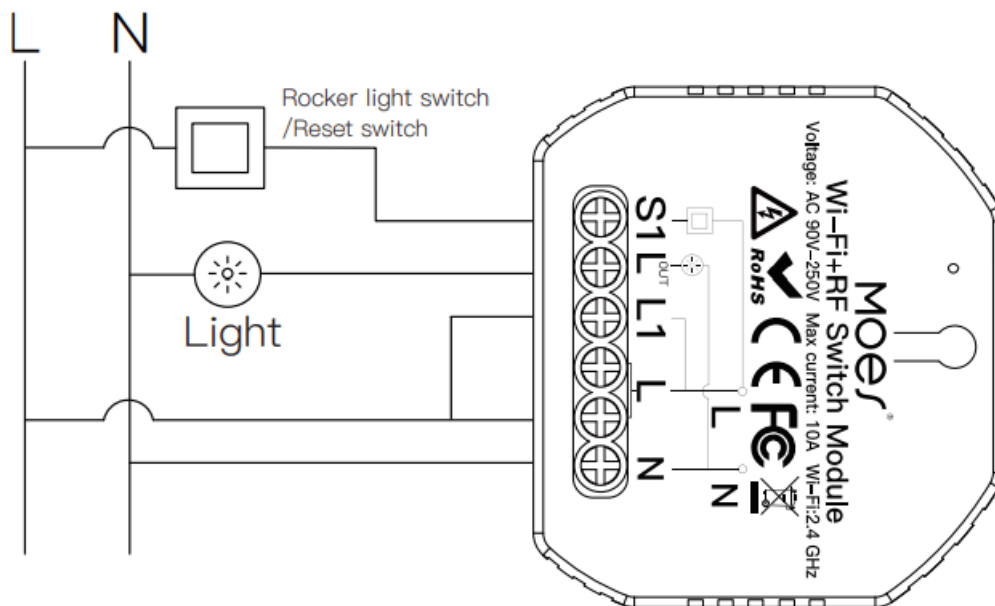
## TECHNICAL SPECIFICATIONS

- **Product type** WiFi+RF Switch Module
- **Voltage** 90-250V AC
- **Current** 10A

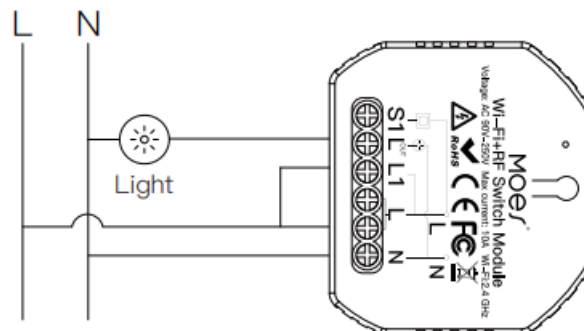
- **WiFi frequency** 2.4GHz WIFI
- **RF frequency** RF433 MHz
- **Operation temp.** -10°C – +40°C
- **Case temp. Tc:** +80°C (Max.)
- **Operation range** ≤ 200 m
- **Dims (WxDxH)** 52x47x18 mm
- **IP rating** IP20
- **Warranty** 1 years

## WIRING DIAGRAM

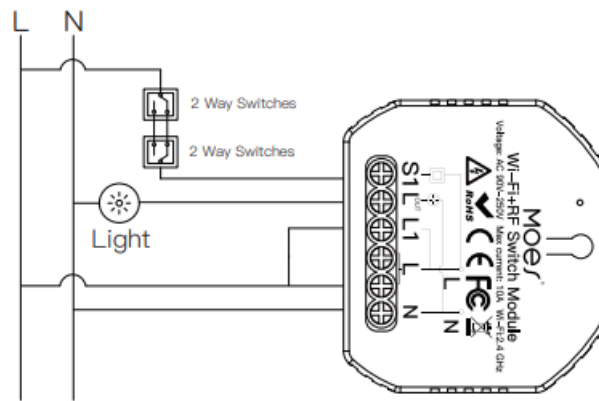
### 1. With one switch



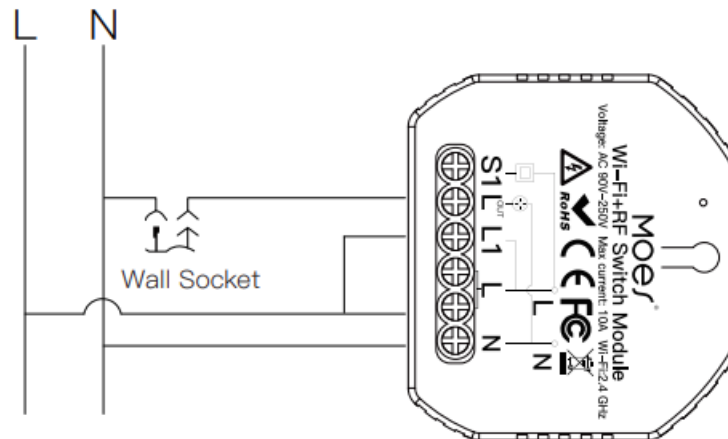
### 2. Without switch



### 3. With 2 Way switches



#### 4. With Wall Socket



### Wiring Instructions and Diagrams

1. Turn off the power supply before carrying out any electrical installation work.
2. Connect wires according to the wiring diagram.
3. Insert the module into the junction box.
4. Connect the power supply and follow switch module configuration instructions.

### FAQ

- **Q1: What should I do if I can't configure the switch module?**
  - **a.** Please check whether device is powered on.
  - **b.** Make sure your mobile and switch module are under the same 2.4 GHz WiFi network.
  - **c.** Whether it's in good internet conditions.
  - **d.** Make sure the password entered in App is correct.
  - **e.** Make sure the wiring is correct.
- **Q2: What device can be connected to this WiFi switch module?**
- **Q3: What happens if the WiFi goes off?**

Most of your household electrical appliances can be, such as lamps, laundry machine, coffe maker, etc. You can still control the device connected the switch module with your traditional switch and once WiFi is active again the device connected to module will connect automatically to your WiFi network.

- **Q4: What should I do if I change the WiFi network or change the password?**

You have to re-connect our WiFi switch module to the new WiFi network according to the App User Manual.

## MANUAL OVERRIDE

The switch module terminal reserves the access of manual override function for the end-user to switch on/off .  
Switch on/off for permanent on/off function.

### Notes:

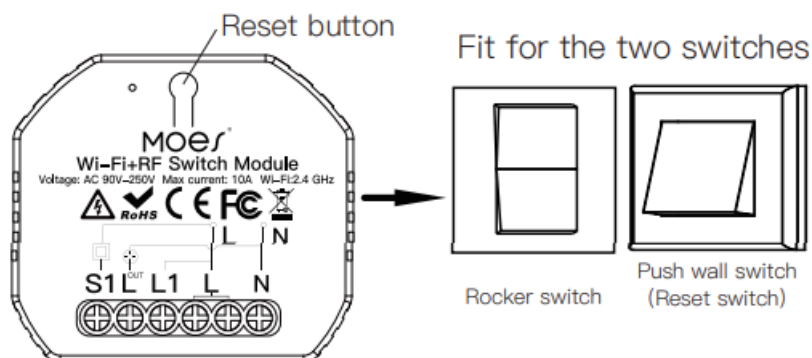
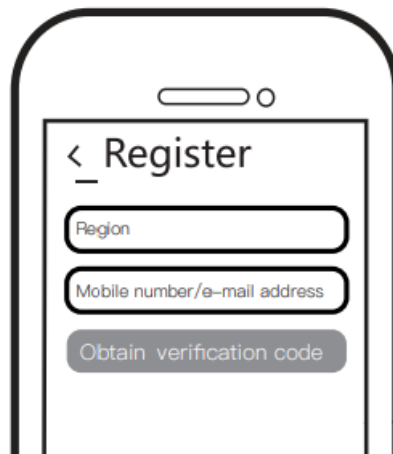
- Both the adjustment on App and switch can be reset , the last adjustment remains in memory.
- The App control is synchronized with the manual switch.

Scan the QR code to download Smart Life App, or you can also search keyword “Smart Life” at App Store or Googleplay to download App.



iOS App / Android App

Log in or register your account with your mobile number or e-mail address. Type in the verification code sent to your mobile or mail box, then set your login password. Click “Create Family” to enter into the App.

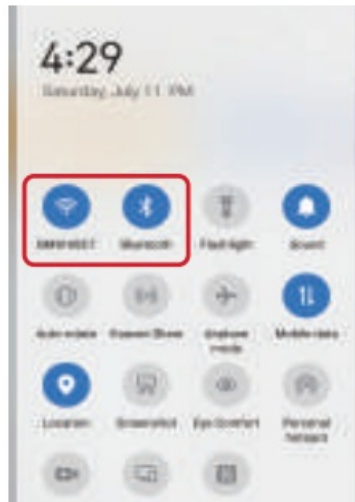


### Wi-Fi link method:(two pairing methods)

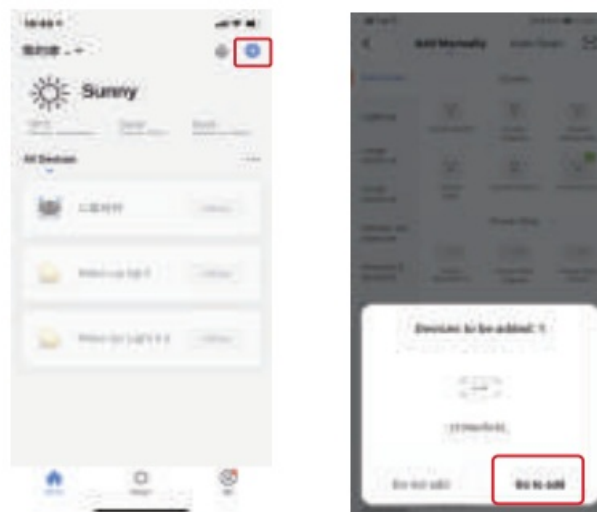
Complete the wiring of the switch module before pairing

**Method one:** Pair and clear up the WiFi code with Bluetooth and WiFi connected meantime.(New Updated)

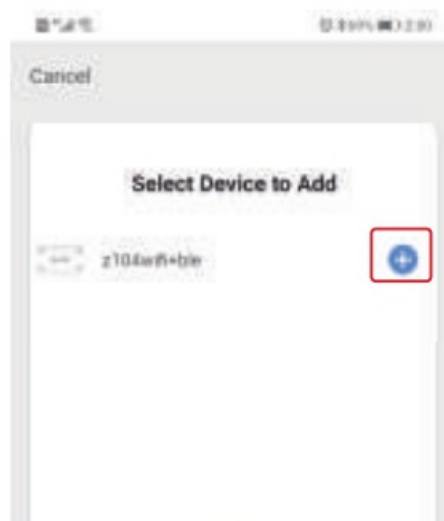
1. Make sure your phone is connected to Wi-Fi and Bluetooth.



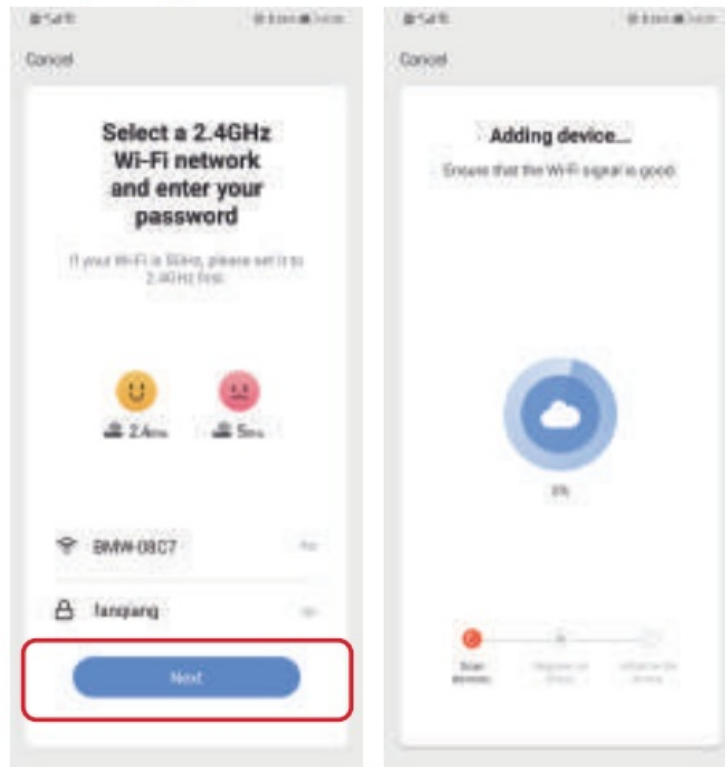
2. Open Smart Life/Tuya App and Click "+", then the prompt page will automatically show on the screen. Click "Go to add".



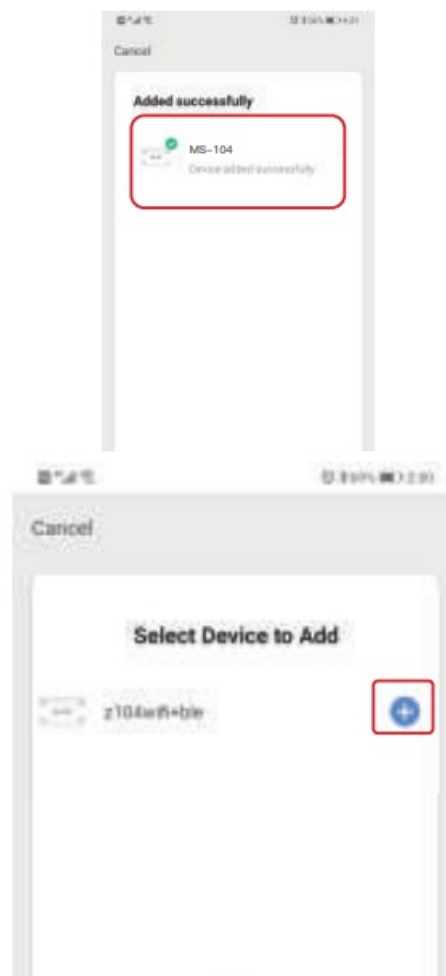
3. Select the device you want to add and click "+".



4. Enter Wi-Fi Password and click "Next", waiting for completing the connection.



5. Add the device successfully, you can edit the name of the device to enter the device page by click “Done”



## How to reset Wi-Fi code

- **a.** For reset switch:press the switch button for 10 times until the beep sounds continuously and rapidly as Di-Di-Di... for pairing and reset mode.
- **b.** For rocker light switch:press the switch button for 20 times(ON/OFF cycle for 10 times) until the beep



sounds continuously and rapidly as Di-Di-Di... for pairing and reset mode.

- **c.** For switch module:long press the reset button on the module until you hear Di-Di for 2 times,then continue to press until the beep sounds continuously and rapidly as Di-Di-Di...

**NOTE** This WiFi+RF switch module fits for rocker light switch and reset switch meanwhile. Please pay attention to the different pairing modes.

**Method two:** Pair with traditional pairing method. After the wiring of switch module is done, press the traditional switch to enter into the pairing mode:

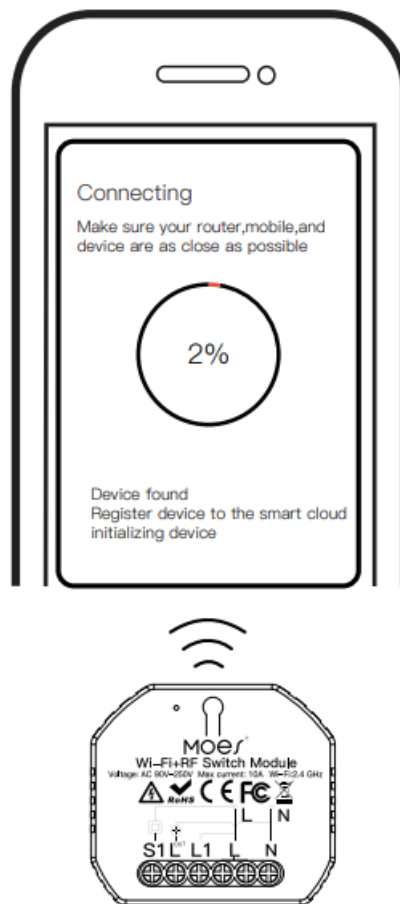
- **a.** for reset switch:press the switch button for 10 times until the beep sounds continuously and rapidly as Di-Di-Di... for pairing and reset mode.
- **b.** for rocker light switch:press the switch button for 20 times (ON/OFF cycle for 10 times) until the beep sounds continuously and rapidly as Di-Di-Di... for pairing and reset mode.
- **c.** for switch module:long press the reset button on the module until you hear Di-Di for 2 times,then continue to press until the beep sounds continuously and rapidly as Di-Di-Di...



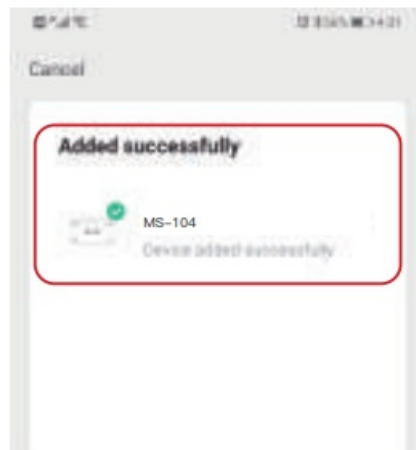
Open the App, select “+” on top right and choose “Switch (Wi-Fi)” to add device.



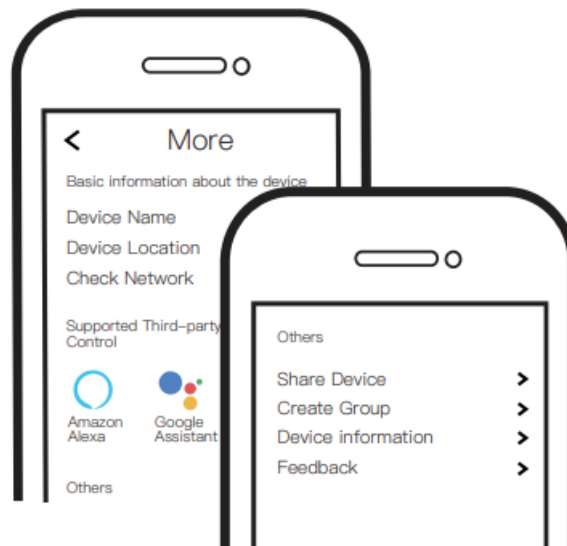
Make sure your smart phone and WiFi+RF switch module are under the same WiFi network at 2.4GHz connection. Confirm when the light blinks rapidly (twice a second).



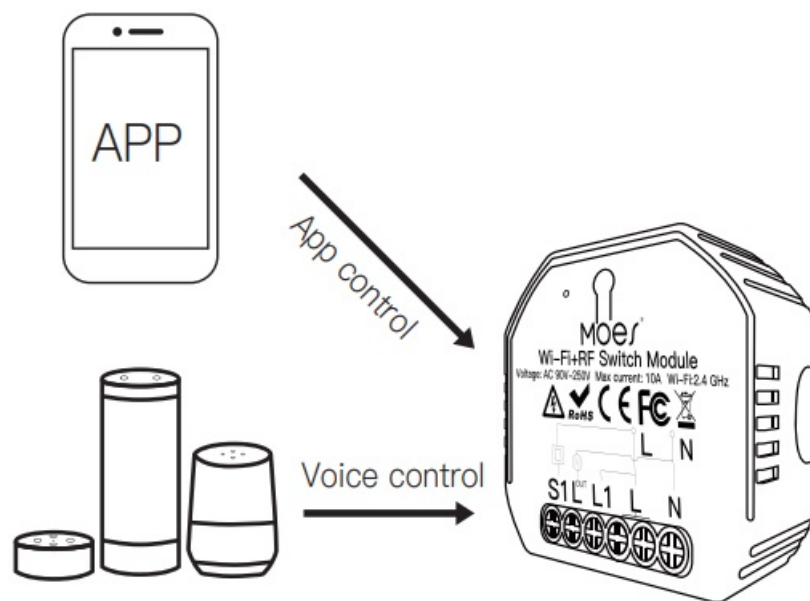
The connecting will take about 10-120 seconds to complete depending on your network condition.



When pairing is done, the switch will be shown on the App.



Connect to Amazon Alexa or Google Assistant for voice control, or share the devices with your families or friends



Enjoy your smart life of home automation for lighting control by using our All-in-one mobile App wherever you are in the world or simply by voice control when you are sitting at home comfortably.

## Pair and clear up the RF code

### How to pair the RF code

1. **For reset switch:** Press the switch button for 5 times until you hear Di-Di(2 times).Then press the RF transmitter switch for successful pairing.
2. **For rocker light switch:** Press the switch button for 10 times (ON/OFF cycle for 5times) until you hear Di-Di(2 times).Then press the RF transmitter switch for successful pairing.
3. **For reset button:** Long press the reset button on the switch module for 5 seconds until the beep sounds as Di-Di for 2 times.Then press the RF transmitter switch for successful pairing.

### How to clear up the RF code

1. **For reset switch:** Press the switch button for 5 times until you hear Di-Di(2 times),waiting for 5 seconds,press

the switch button for 5 times again until you hear Di-Di-Di-Di(4 times).Then the RF code is now cleared up.

2. **For rocker light switch:** Press the switch button for 10 times (ON/OFF cycle for 5times) until you hear Di-Di(2 times),waiting for 5 seconds,press the switch button for 10 times(ON/OFF cycle for 5 times) again until you hear Di-Di-Di-Di(4 times).Then the RF code is now cleared up.
3. **For reset button:** Long press the reset button on the switch module and release your finger until the beep sounds as Di-Di for 2 times.Then press the button after 5 seconds for 5 seconds until the beep sounds as Di-Di-Di-Di for 4 times.

## How to achieve multi-control association

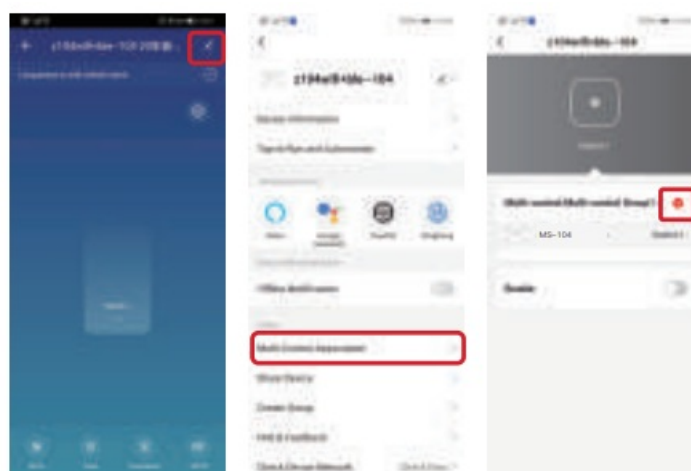
**Note:** Please confirm you have successfully finished the WiFi link method above for adding this switch to your Smart Life App before the association.

1. WiFi add another smart switch to the same Smart Life/Tuya App.(If there is a smart switch having been added before to the app,just go to next step.)

**Note:** There is no need to wire the new added switch to the light,only L and N are required for wiring.



2. Then you will see two devices in the app and click the main switch(as One gang switch as below) by entering into the next operation.
3. Click in the upper right corner and choose“Multi-Control Association, and then click “+” in the right corner.

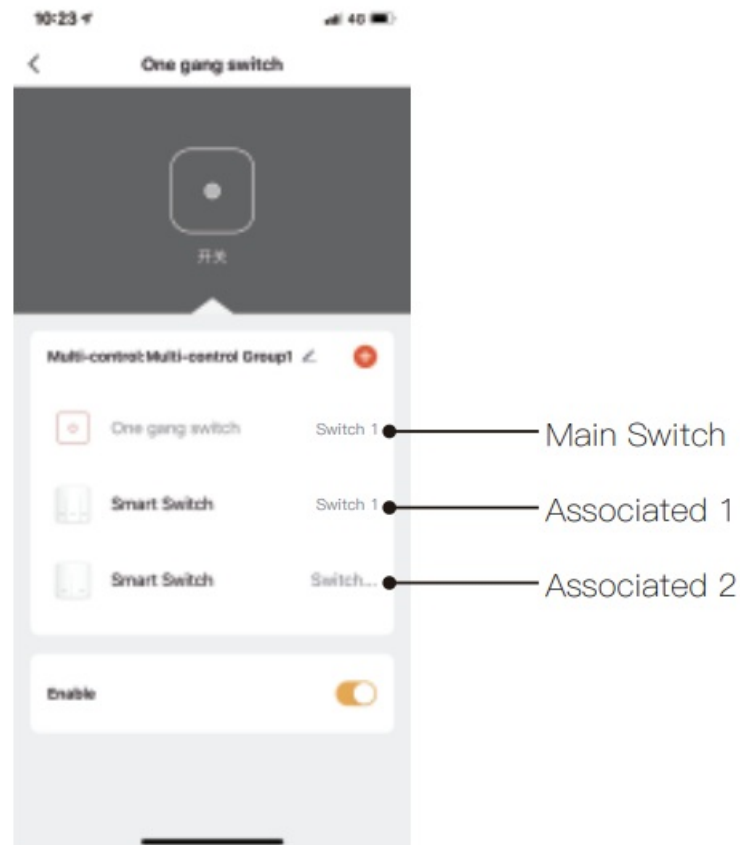


4. Choose the switch that you want to associate to and then choose the switch button that you want to control the same light.
5. Then go back to previous page,you will see two items in the page,one is your main switch,the other is the one you associate just now.

**Note:** Please confirm the associated switch is enabled.



6. Now you are able to control your light with two switches. Do not associate another button in the same switch for multi-control.
7. If you want to add another third or more smart switches to control your light, just repeat the steps above. And you will see the result as below when you associate another new switch.



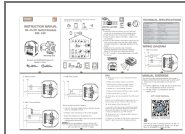
Thank you for your support and purchase at we Moes, we are always here for your complete satisfaction, just feel free to share your great shopping experience with us.



If you have any other need, please do not hesitate to contact us first, we will try to meet your demand.

Support: [service@moeshouse.com](mailto:service@moeshouse.com)

## Documents / Resources



[Moes MS-104 WiFi Plus RF Switch Module](#) [pdf] Instruction Manual  
MS-104 WiFi Plus RF, Switch Module, MS-104 WiFi Plus RF Switch Module, WiFi Plus RF Switch Module, MS-104, Module

## References

-  [MOES Smart WiFi ZigBee Smart 2/3 Way Switch Socket Thermostat Sensor](#)