



Moes MS-104 Smart Switch Module Instruction Manual

[Home](#) » [MOES](#) » Moes MS-104 Smart Switch Module Instruction Manual

Contents [[hide](#)]

- [1 Moes MS-104 Smart Switch Module](#)
- [2 Inhouse local operation](#)
- [3 INSTALLATION](#)
- [4 TECHNICAL SPECIFICATIONS](#)
- [5 WIRING DIAGRAM](#)
- [6 FAQ](#)
 - [6.1 Add Devices](#)
- [7 Wi-Fi link method:\(three pairing methods\)](#)
- [8 How to reset/re-pair WiFi code](#)
- [9 Enter Smart Life Skill in Alexa APP](#)
- [10 SERVICE](#)
- [11 WARRANTY CARD](#)
- [12 Documents / Resources](#)
 - [12.1 References](#)
- [13 Related Posts](#)



Moes MS-104 Smart Switch Module



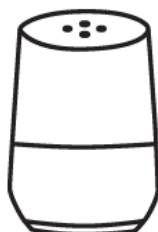
Bitte scannen Sie den QR-Code, um das deutsche Handbuch, das Installationsvideo und die Funktionseinführung zu erhalten



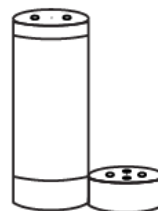
Global international operation Whenever & Wherever You are, All-in-one Mobile App



Schedule timer



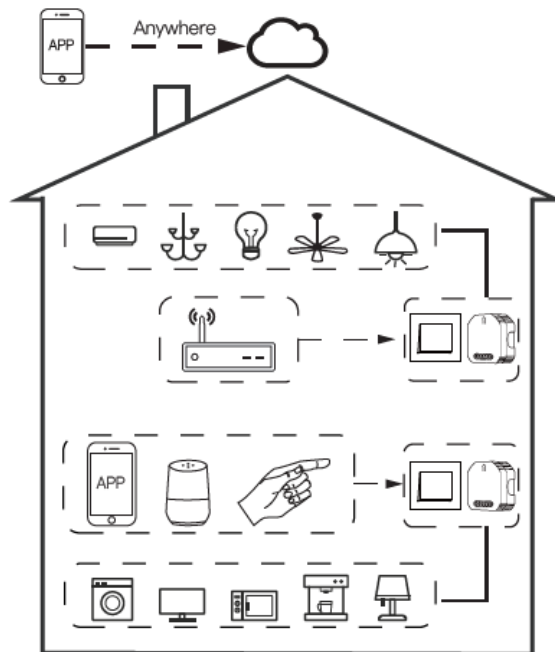
Voice control-work
with Google Home



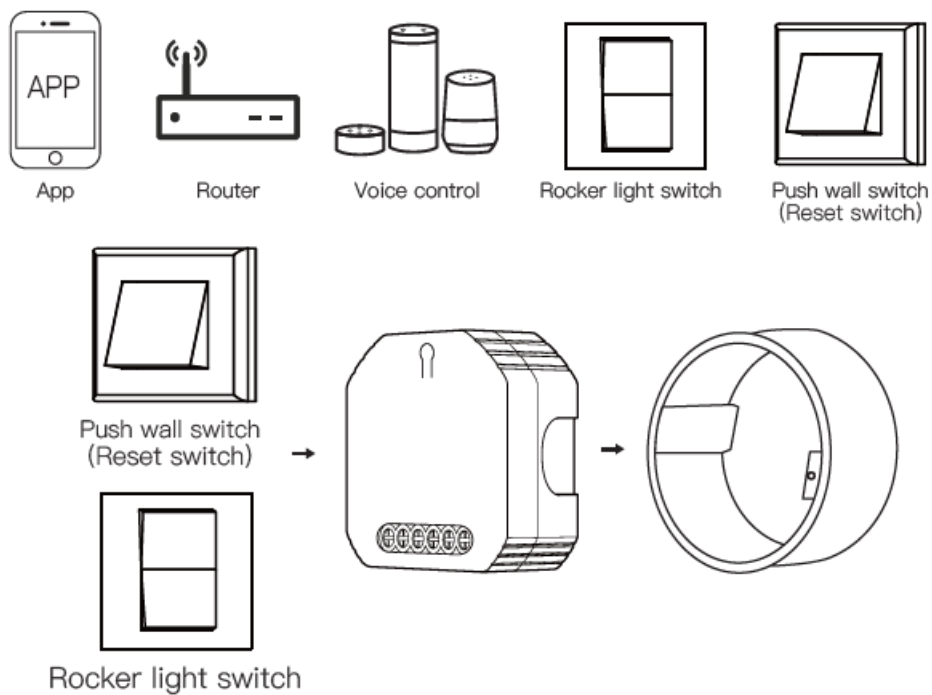
Voice control-work
with Amazon Alexa



Device Sharing



Inhouse local operation



Step 1

- Turn off the circuit breaker and use the electrical tester to test the power.
- Ensure the circuit breaker is off before wiring.

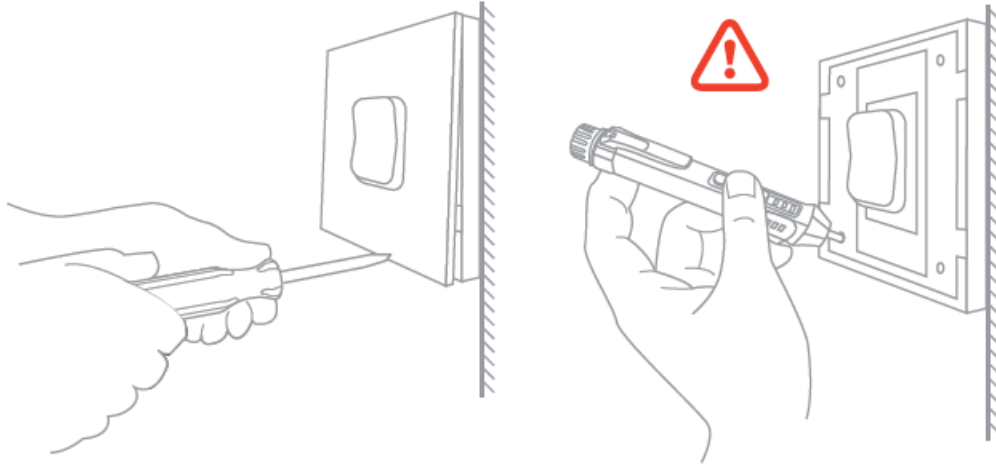


Attention:

Please disconnect the power supply before installing or removing the device for avoiding irreversible damage on the device from the electric current or some unpredictable problems such as lamp flashing.

Step 2

- Remove the old switch



Step 3

- Remove the switch and pull it away from the wall. Identify Line/Load Wire (Note: The color of your wire may be different from the color shown on the manual.)

Verify power is off

We recommend you remove the faceplate from the old switch and use an electrical tester to test all wires connected to the switch to ensure there is no voltage in the circuit.

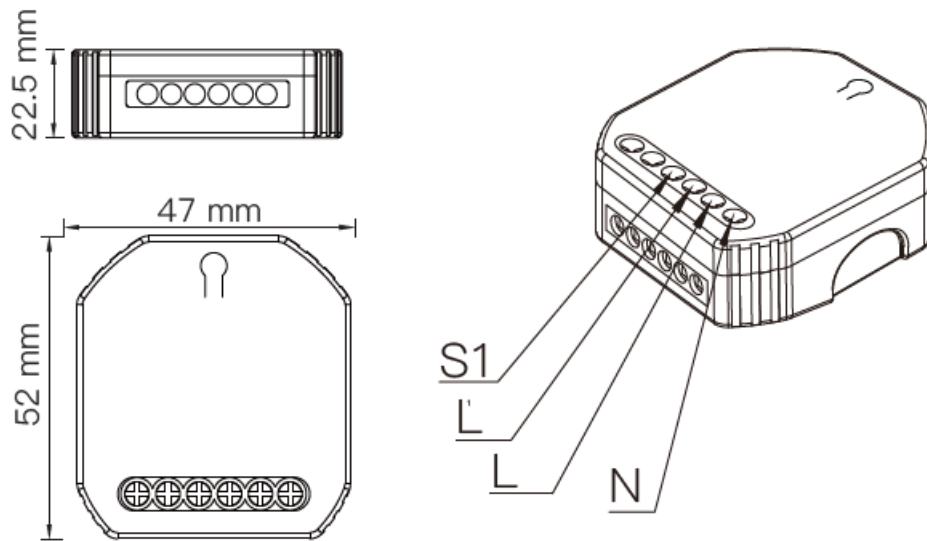
- You may need to turn off more than one circuit breaker.

INSTALLATION

Warnings:

1. Installation must be carried out by a qualified electrician in accordance with local regulations.
2. Keep the device out of the reach of children.
3. Keep the device away from water, damp or hot environment.
4. Install the device away from strong signal sources such as microwave oven that may cause signal interruption resulted in abnormal operation of the device.
5. Obstruction by concrete wall or metallic materials may reduce the effective operation range of the device and should be avoided.
6. Do NOT attempt to disassemble, repair or modify the device.

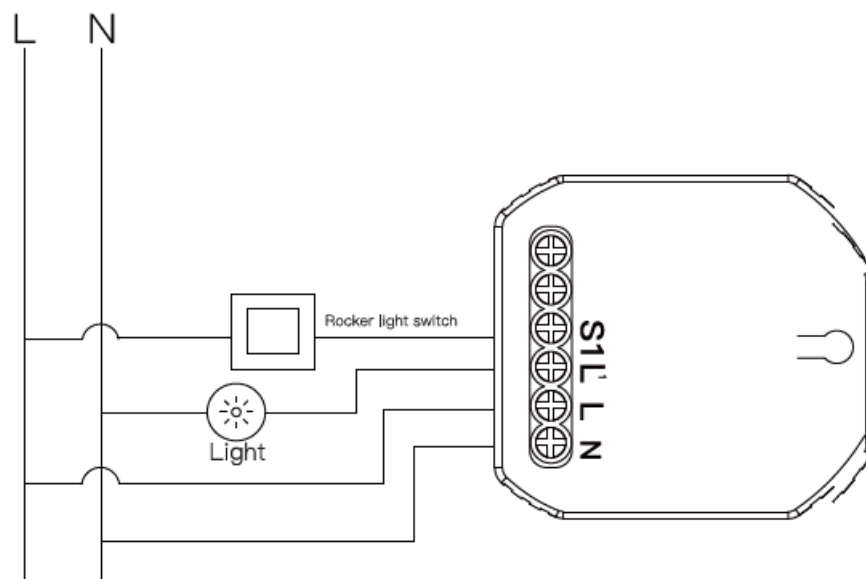
TECHNICAL SPECIFICATIONS



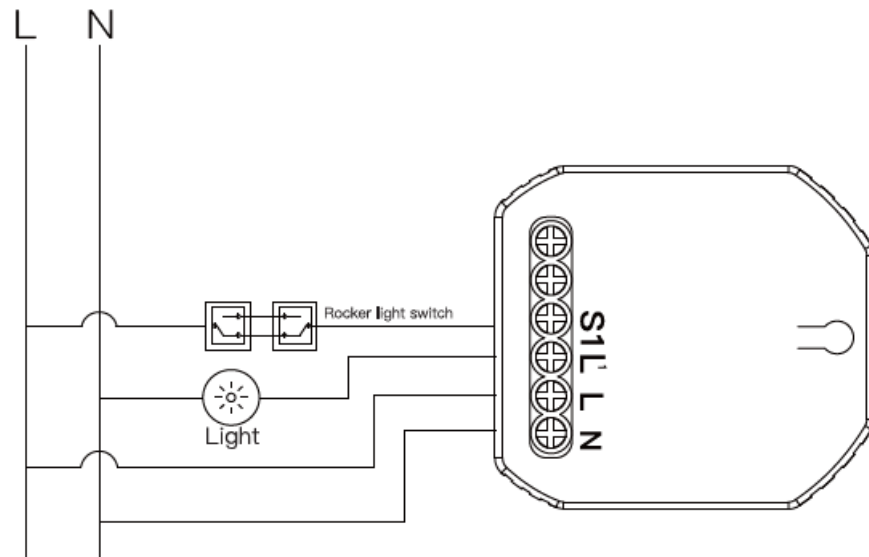
Model	MS-104
Voltage	90-250V AC 50/60Hz
Current	10A
Wireless Protocol	Wi-Fi 2.4GHz IEEE 802.11b/g/n
Operation Temp.	-10°C – +40°C
Case Temp	Tc: +80°C (Max.)
Dims (WxDxH)	47 x 52 x 22.5 mm
IP Rating	IP20

WIRING DIAGRAM

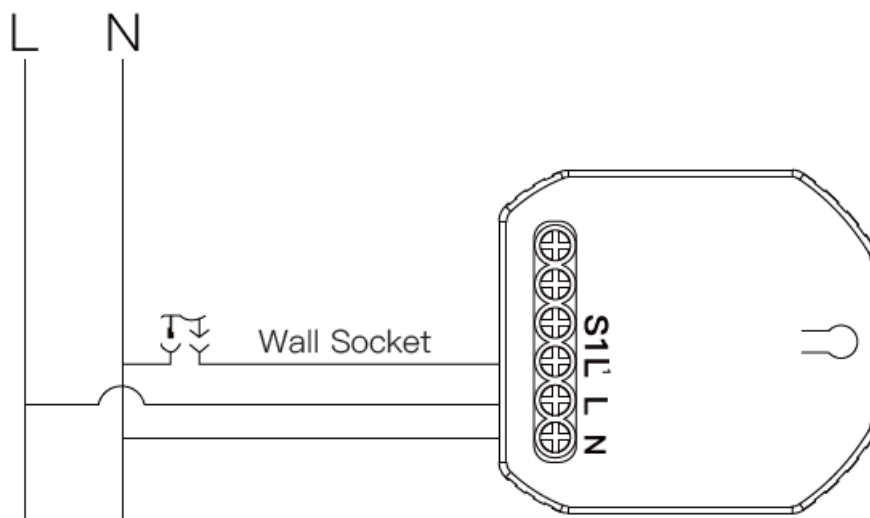
1. With one 2 Gang switch



2. With 2 Gang 2 Way switches



3. With Wall Socket



Wiring Instructions and Diagrams

1. Turn off the power supply before carrying out any electrical installation work.
2. Connect wires according to the wiring diagram.
3. Insert the module into the junction box.
4. Connect the power supply and follow switch module configuration instructions.

Notes: Put your smartphone close to the switch module when you're configuring, and make sure you have min. 50% Wi-Fi signal.

FAQ

Q1: What should I do if I can't configure the switch module?

- a. Please check whether device is powered on.
- b. Make sure your mobile and switch module are under the same 2.4 GHz WiFi network.
- c. Whether it's in good internet conditions.
- d. Make sure the password entered in App is correct.
- e. Make sure the wiring is correct.

Q2: What device can be connected to this WiFi switch module?

Most of your household electrical appliances can be, such as lamps, laundry machine, coffee maker, etc.

Q3: What happens if the WiFi goes off?

You can still control the device connected to the switch module with your traditional switch and once WiFi is active again the device connected to module will connect automatically to your WiFi network.

Q4: What should I do if I change the WiFi network or change the password?

You have to re-connect our WiFi switch module to the new WiFi network according to the App User Manual.

Add Devices

1. Download Smart Life App



Please scan the QR code or download Smart Life on App store.

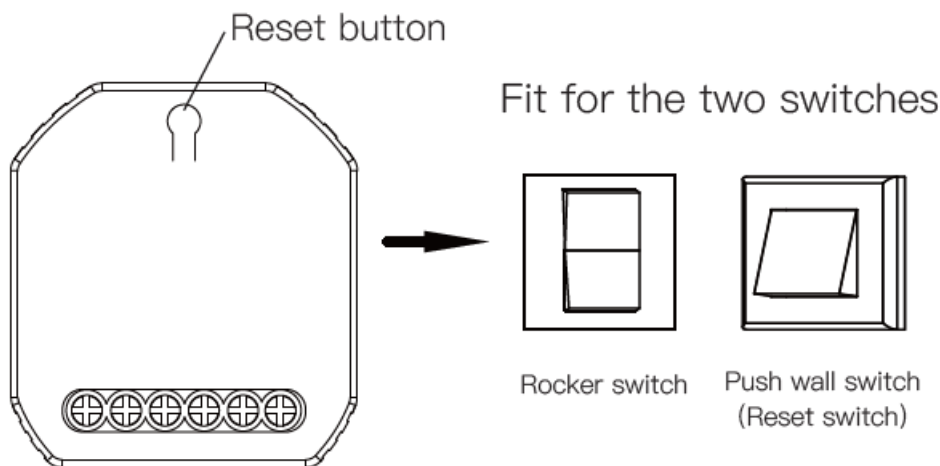
2. Registration or Log in

- Download "Smart Life" Application
- Enter the Register/Login interface; tap "Register" to create an account by entering your phone number to get verification code and "Set password". Choose "Log in" if you already have a Smart Life account.

3. Configure the APP to the switch

Preparation: Ensure the switch has been connected with electricity; ensure your phone has been connected to Wi-Fi and is able to connect to the Internet.

Note:



Wi-Fi link method:(three pairing methods)

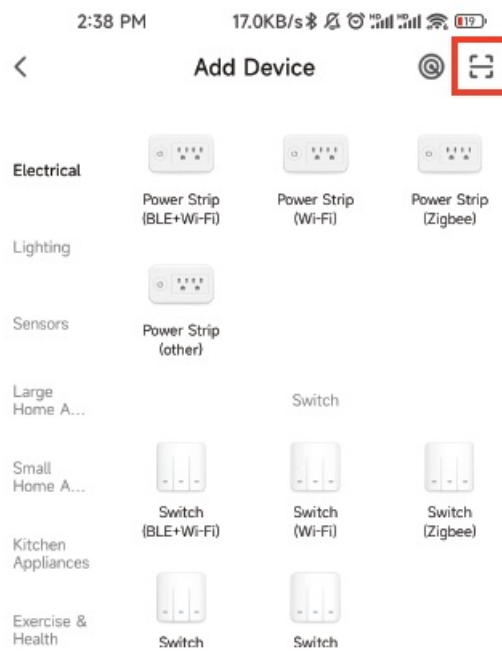
Complete the wiring of the switch module before pairing

Method one:

Scan the QR code to configure the network guide.



(1)



(2)



Scan the QR code



Please connect the device according to the configuration process.

How to reset/re-pair WiFi code

- a.** For reset button:long press the button on the module to hear the beep sounds continuously.
- b.** For reset switch (Set as reset switch in APP): press the switch button for 10 times to hear the beep sounds continuously.
(If using rocker light switch, you should press the rocker light switch for 20 times)
- c.** For rocker light switch (Set as rocker switch in **APP**):press the switch button for 10 times(ON/OFF cycle for 5 times) to hear the beep sounds continuously.
(If using reset switch, you should press the reset Switch for 5 times)

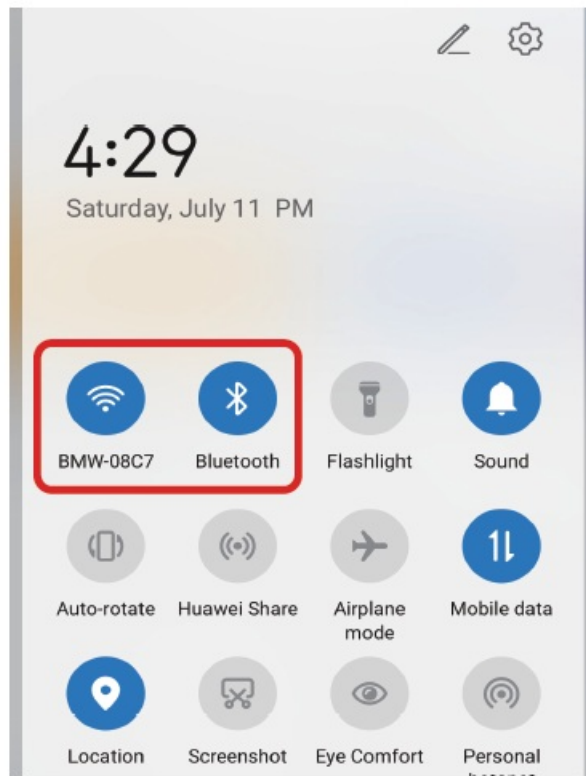
Note

This WiFi switch module fits for rocker light switch and reset switch meanwhile.Please pay attention to the different pairing modes.

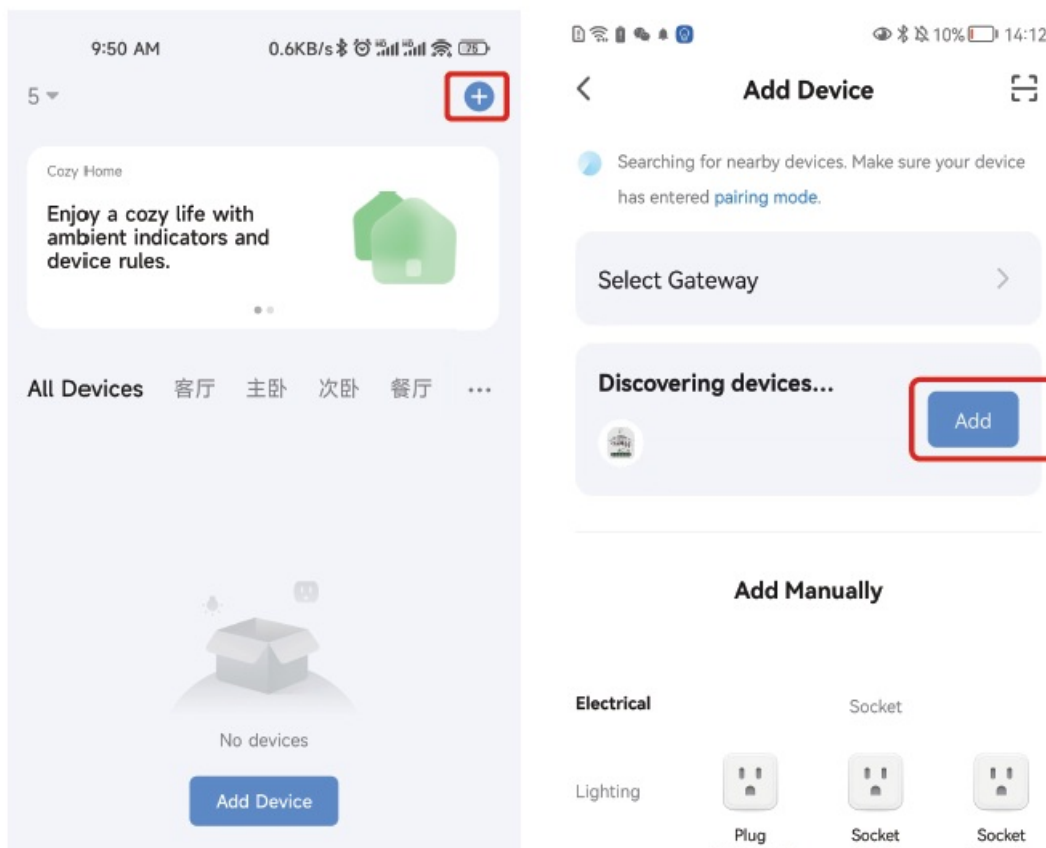
Method two :

Pair and clear up the WiFi code withBluetooth and WiFi connected meantime. (New Updated)

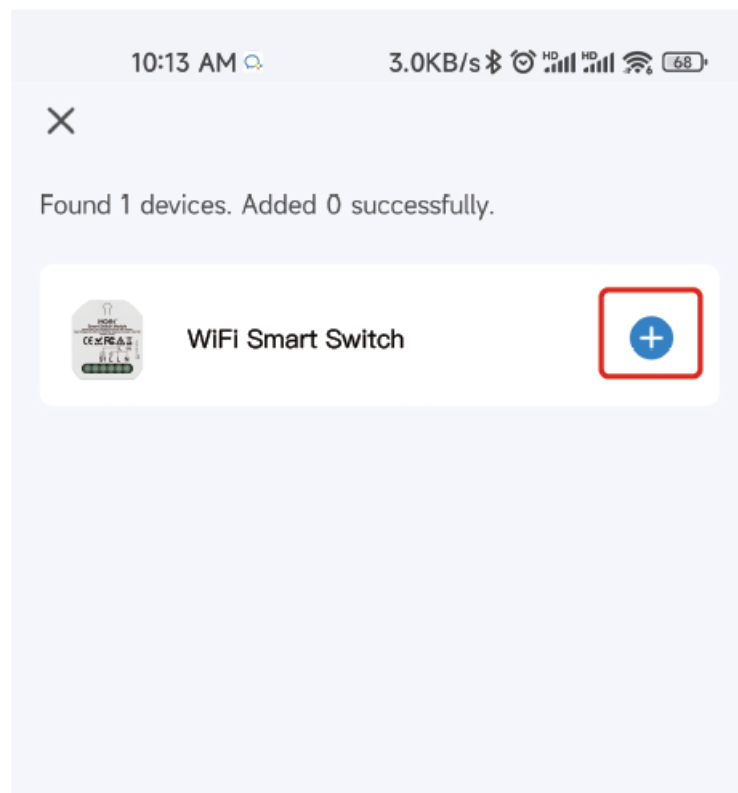
1. Confirm the device beeps continuously, if not, please refer to page 14 for how to enter the network configuration.



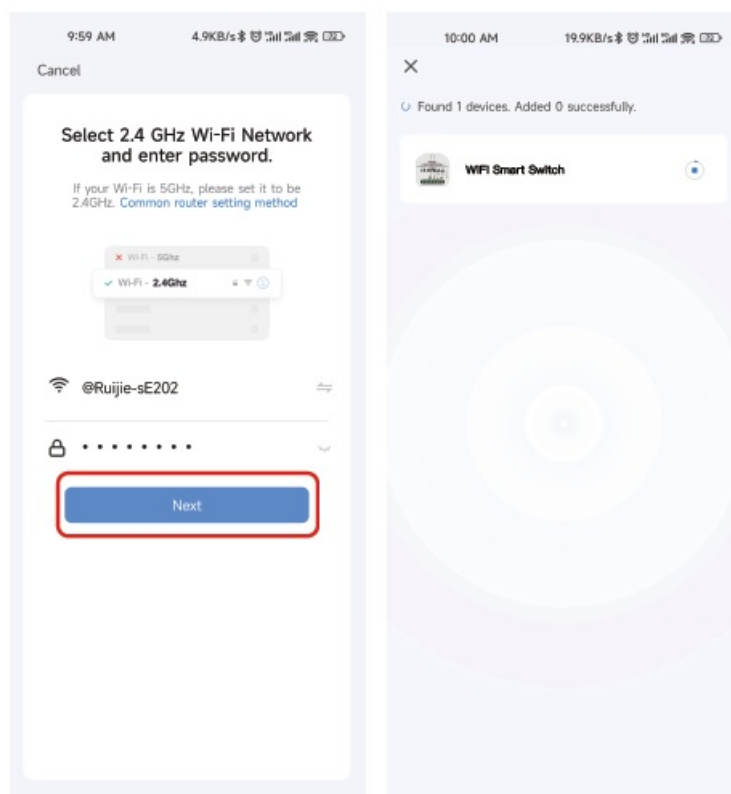
2. Open Smart Life/Tuya App and Click"+",then the prompt page will automatically show on the Screen.Click "Add".



3. Select the device you want to add and click "+"



4. Enter Wi-Fi Password and click “Next,waiting for completing the connection.




5. Add the device successfully, you can edit the name of the device to enter the device page by click “Done”

Done

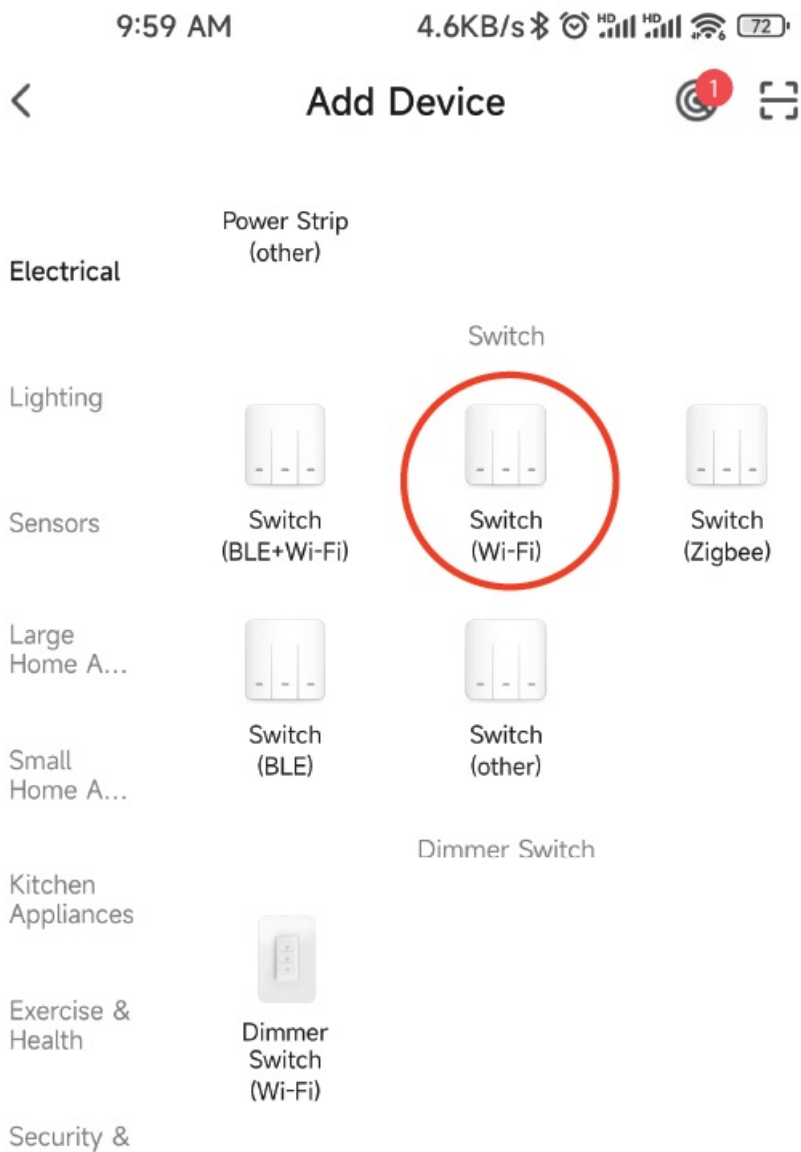
Added successfully



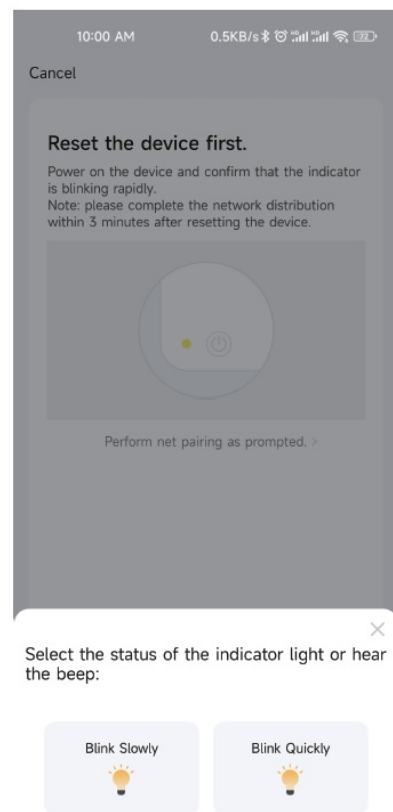
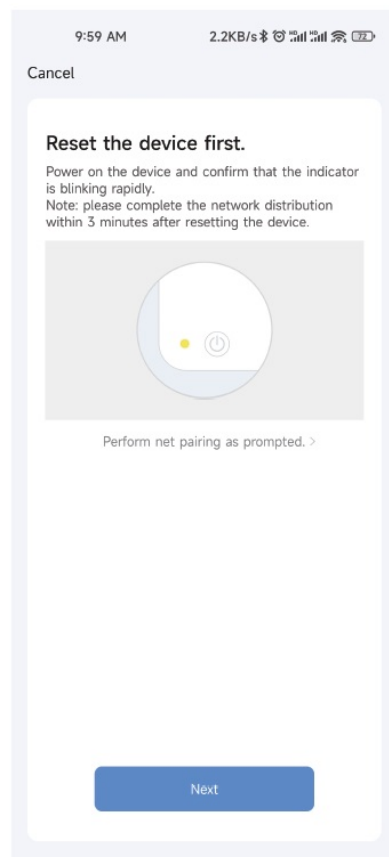
WIFI Smart Switch 
Device added successfully

Method three:

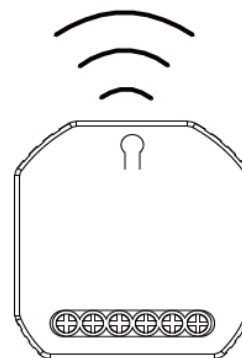
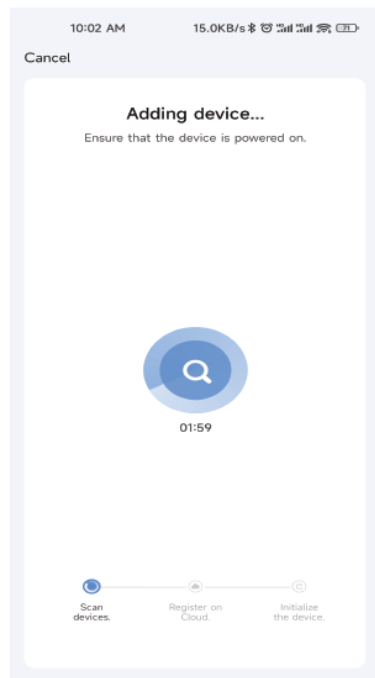
Pair with traditional pairing method



Open the App, select “+” on top right and choose “Switch (Wi-Fi)” to add device.

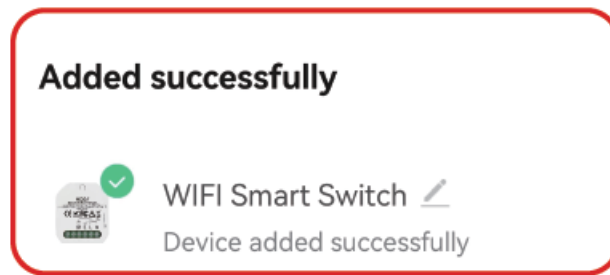


Make sure your smart phone and WiFi switch module are under the same WiFi network at 2.4 GHz connection. Confirm when the switch module beeping rapidly.



The connecting will take about 10-120 seconds to complete depending on your network condition.

Done



When pairing is done, the switch will be shown on the App.

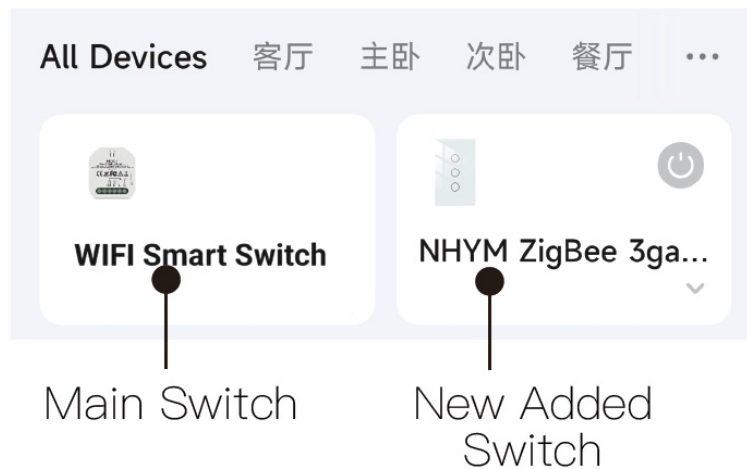
How to achieve multi-control association

Note: Please confirm you have successfully finished the WiFi link method above for adding this switch to your Smart Life App before the association.

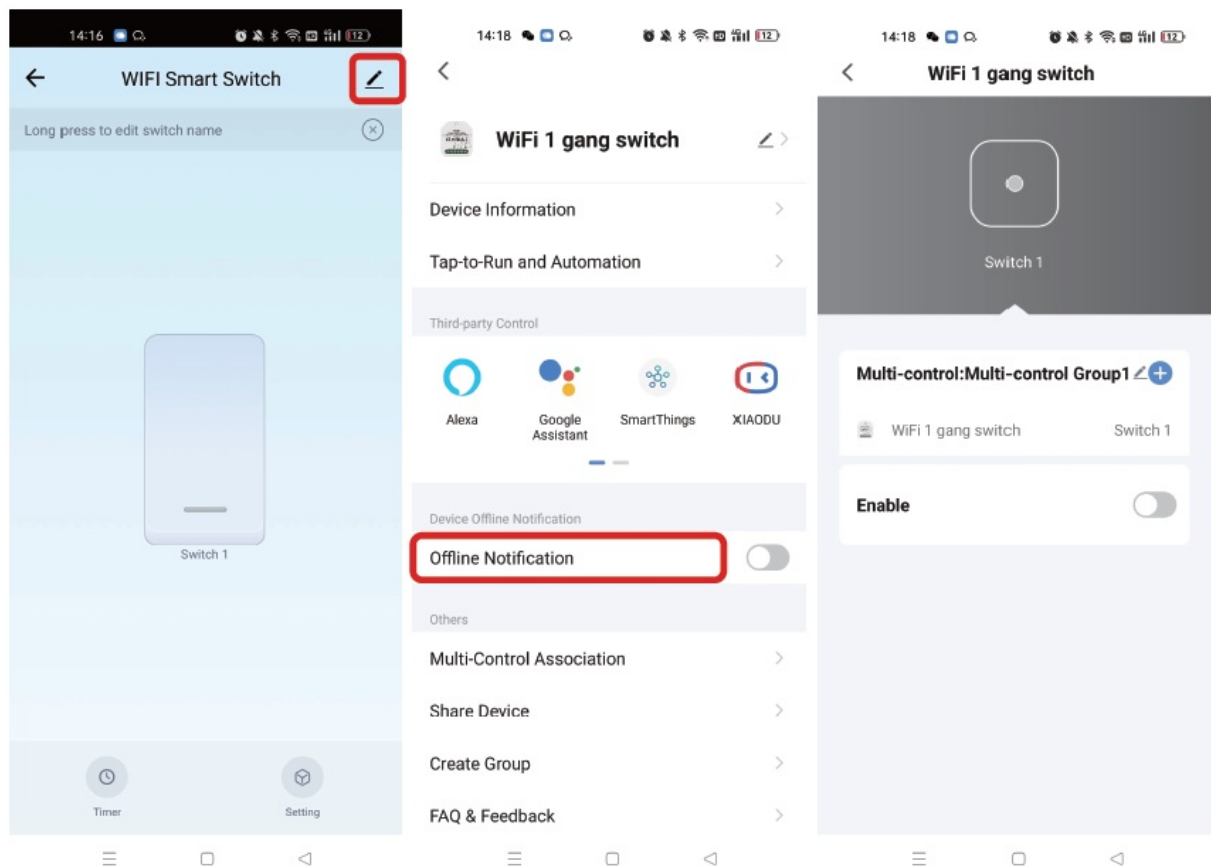
1. WiFi add another smart switch to the same Smart Life/Tuya App.(If there is a smart switch having been added before to the app,just go to next step.)

Note: There is no need to wire the new added switch to the light,only L and N are required for wiring.

2. Then you will see two devices in the app and click the main switch(as One gang switch as below) by entering into the next operation.

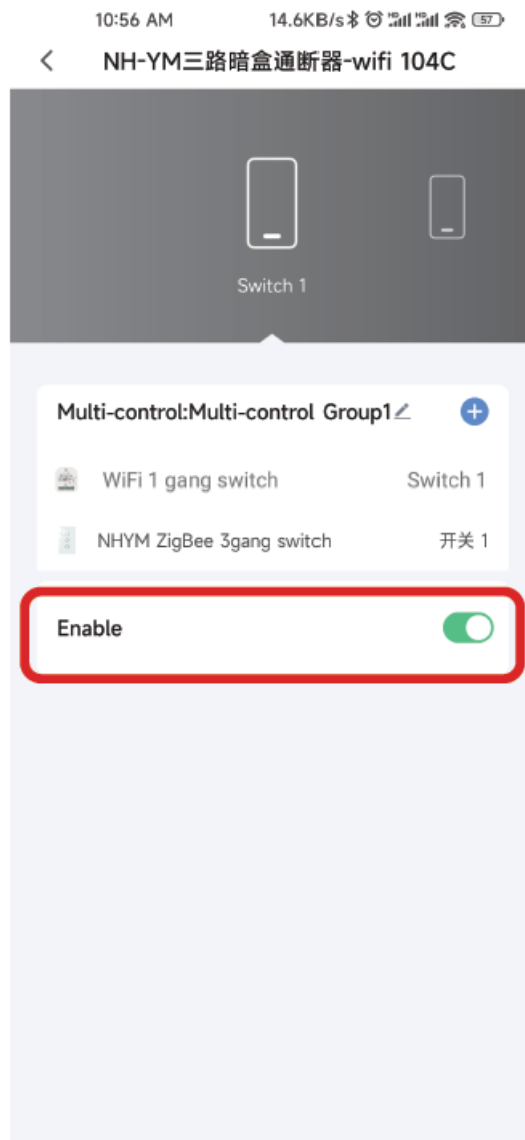


3. .Click in the upper right corner and choose“Multi-Control Association, and then click “+” in the right corner.

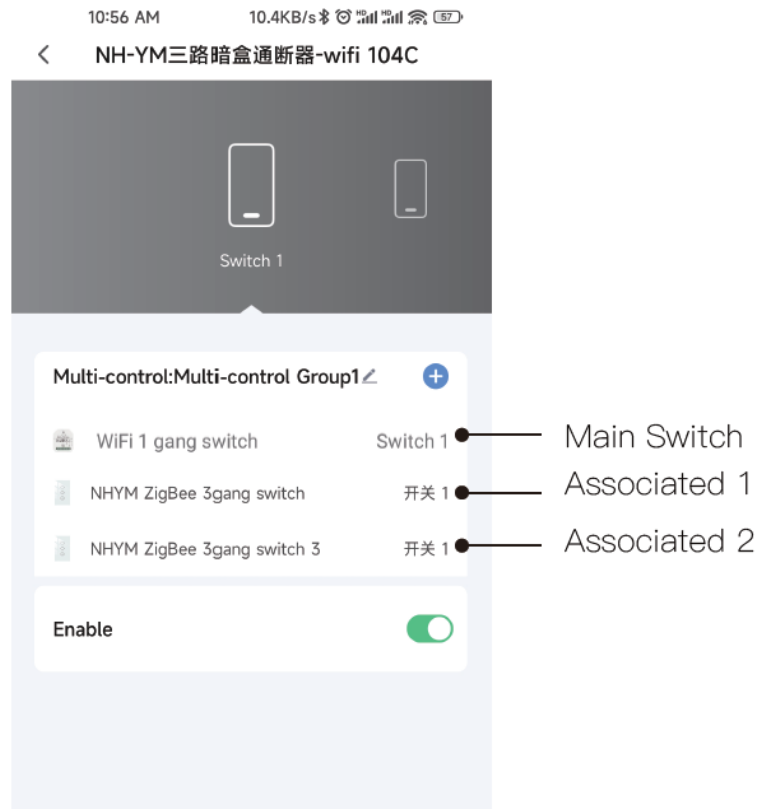


4. Choose the switch that you want to associate to and then choose the switch button that you want to control the same light.
5. Then go back to previous page, you will see two items in the page, one is your main switch, the other is the one you associate just now.

Note: Please confirm the associated switch is enabled.



6. Now you are able to control your light with two switches. Do not associate another button in the same switch for multi-control.
7. If you want to add another third or more smart switches to control your light, just repeat the steps above. And you will see the result as below when you associate another new switch.



Enter Smart Life Skill in Alexa APP

1. Complete product networking configuration in the App.

Complete the device's networking configuration according to the prompts in the App.

Note: In the App, change the name of the device to an easily identifiable name such as Alexa; names are usually in English, such as "bed light".

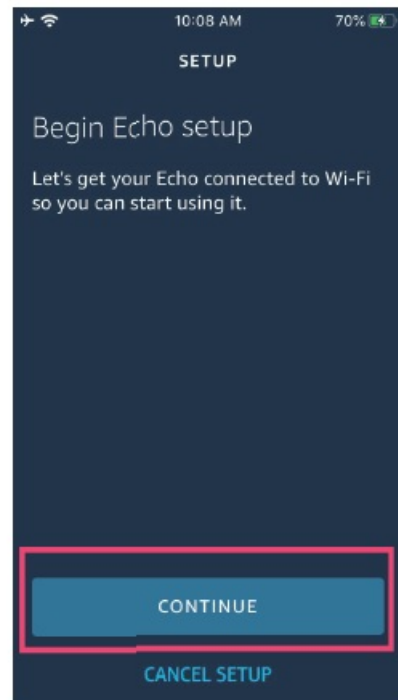
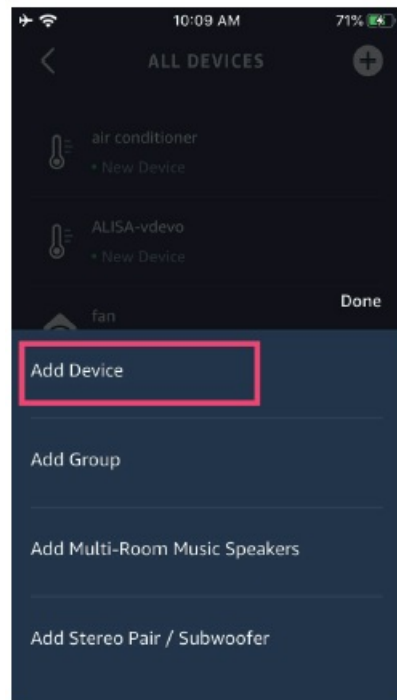
2. Configure the Amazon Echo device (If you have already configured Amazon Echo, you can skip this step. The following instructions are based on the iOS client.)

Make sure you Amazon Echo device is powered on and connected to a Wi-Fi network.

Open the Alexa App on your phone. After successful login, tap on the menu in the upper left corner of the Home page, select "Settings" and tap "Set Up A New Device" to set up the Amazon Echo.

Choose your Amazon Echo device type and language for connecting. Press and hold the small dot on the device until the light turns yellow. Then tap "Continue" to connect to the hotspot.

3. After connecting to the Amazon Echo hotspot, return to the page. At this point, the connection is successful.

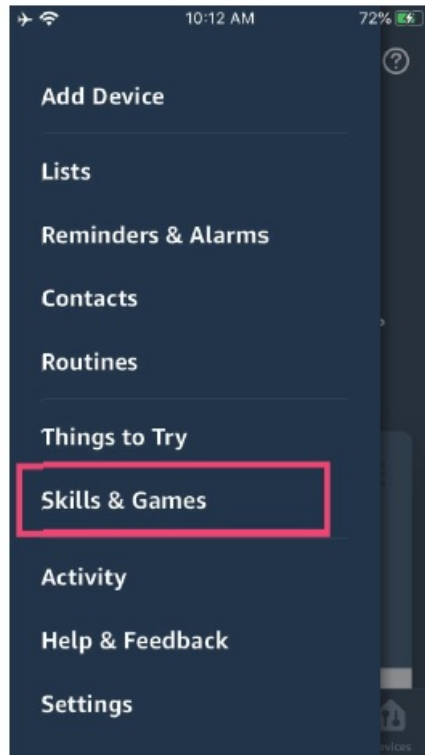


Tap “Continue” to proceed to the next step. Choose a Wi-Fi network to connect to. Amazon Echo will take a few minutes to try to connect to the network.

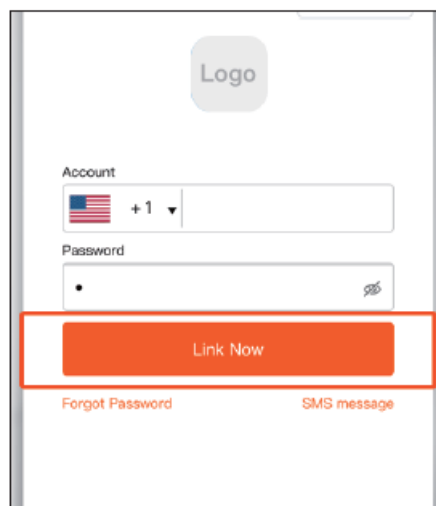
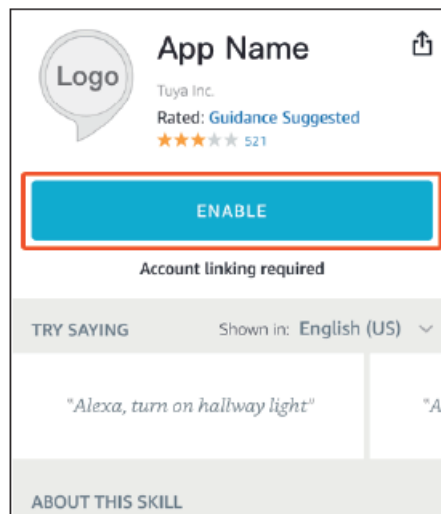
After the network connection is successful, tap “Continue”. An introduction video will appear. After the video ends, tap “Continue” to jump to the Alexa Home page. You have now completed the Amazon Echo’s configuration process.

Key step — Link Skill

Tap on “Skill” in the Alexa App menu.



- Then search for “App Name”. Tap “Enable” to enable the Skill.
- Enter the App account and password, then tap “Link Now” to link your App account to enable the Skill. Now you can start your smart home journey.



Common commands

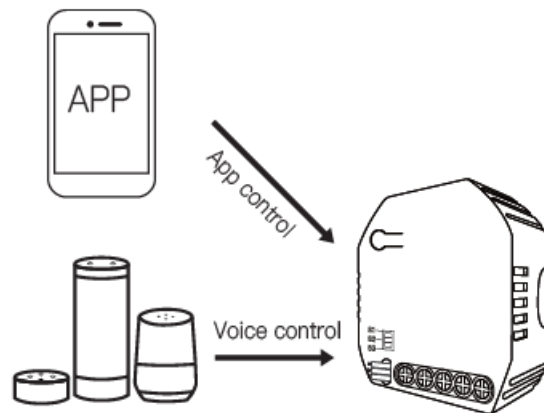
Control the device via voice commands, now you can control your smart device with Echo. You can control your device (such as your bedroom light) with the following commands:

Alexa, turn on/off bedroom light. (Turn on/off the light)

Alexa, set bedroom light to 50 percent. (Set the light to any brightness)

Alexa, brighten/dim bedroom light. (Increase/weaken the brightness of the light)

Alexa, set bedroom light to green. (Adjust the color of the light)



Enjoy your smart life of home automation for lighting control by using our All-in-one mobile App wherever you are in the world or simply by voice control when you are sitting at home comfortably.

SERVICE

1. During the free warranty period, if the product breaks WARRANTY CARD down during normal use, we will offer free maintenance for the product.
2. Natural disasters/man-made equipment failures, disassembly and repair without the permission of our company, no warranty card, products beyond the free warranty period, etc., are not within the scope of free warranty
3. Any commitment (oral or written) made by the third party (including the dealer/service provider) to the user beyond the warranty scope shall be executed by the third party
4. Please keep this warranty card to ensure your rights
5. Our company may update or change the products without notice. Please refer to the official website for the updates.

RECYCLING INFORMATION

All products marked with the symbol for separate collection of waste electrical and electronic equipment (WEEE Directive 2012/19 / EU) must be disposed of separately from unsorted municipal waste. To protect your health and the environment, this equipment must be disposed of at designated collection points for electrical and electronic equipment designated by the government or local authorities. Correct disposal and recycling will help prevent potential negative consequences for the environment and human health. To find out where these collection points are and how they work, contact the installer or your local authority.

WARRANTY CARD

Product Information

- Product Name
- Product Type
- Purchase Date

- Warranty Period
- Dealer Information
- Customer's Name
- Customer Phone
- Customer Address

Maintenance Records

Failure date	Cause Of Issue	Fault Content	Principal

Thank you for your support and purchase at we Moes, we are always here for your complete satisfaction, just feel free to share your great shopping experience with us.If you have any other need, please do not hesitate to contact us first,we will try to meet your demand.

@moessmart MOES.Official

@moes_smart

@moes_smart @moes_smart

www.moeshouse.com

WENZHOU NOVA NEW ENERGY CO.,LTD

Address: Power Science and Technology
Innovation Center, NO.238, Wei 11 Road,
Yueqing Economic Development Zone,
Yueqing, Zhejiang, China
Tel:+86-577-57186815

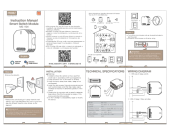
Email:service@moeshouse.com

AMZLAB GmbH

Laubenhof 23, 45326 Essen

Made In China

Documents / Resources

	<p>Moes MS-104 Smart Switch Module [pdf] Instruction Manual</p> <p>MS-104, Smart Switch Module, MS-104 Smart Switch Module, Switch Module, Module</p>
---	---

References

-  [MOES Smart WiFi ZigBee Smart 2/3 Way Switch Socket Thermostat Sensor](#)