



## Moes MFA05 Smart Switch Instruction Manual

[Home](#) » [MOES](#) » Moes MFA05 Smart Switch Instruction Manual 



Enjoy Our Smart Life  
Instruction Manual  
Smart Switch



Powered by





WORKS WITH  
alexa



Works with  
Google Assistant

## Contents

- 1 Precautions before product installation:
- 2 Product Accessories:
- 3 Specifications
- 4 RECYCLING INFORMATION
- 5 WARRANTY CARD
- 6 Documents / Resources
  - 6.1 References

## Precautions before product installation:

1. WiFi only supports 2.4GHz network (802.11 b/g/n). 5G network is not available.
2. Only supports unidirectional/unipolar circuits, not compatible with mutual control switches.
3. Need a neutral wire. (Please do not install if there is no neutral wire in the cassette).
4. Basic electrical wiring knowledge or experience is required, or please consult a professional electrician.
5. Never connect the neutral wire and the live wire reversely (Otherwise the electrical appliances will not work).
6. Long press the ON / OFF button to restore the device to the factory default settings. Do this only when you are sure you want to delete all settings. (This operation will change the status of network distribution).
7. A screwdriver , a test pencil and other tools are needed.

## Product Accessories:

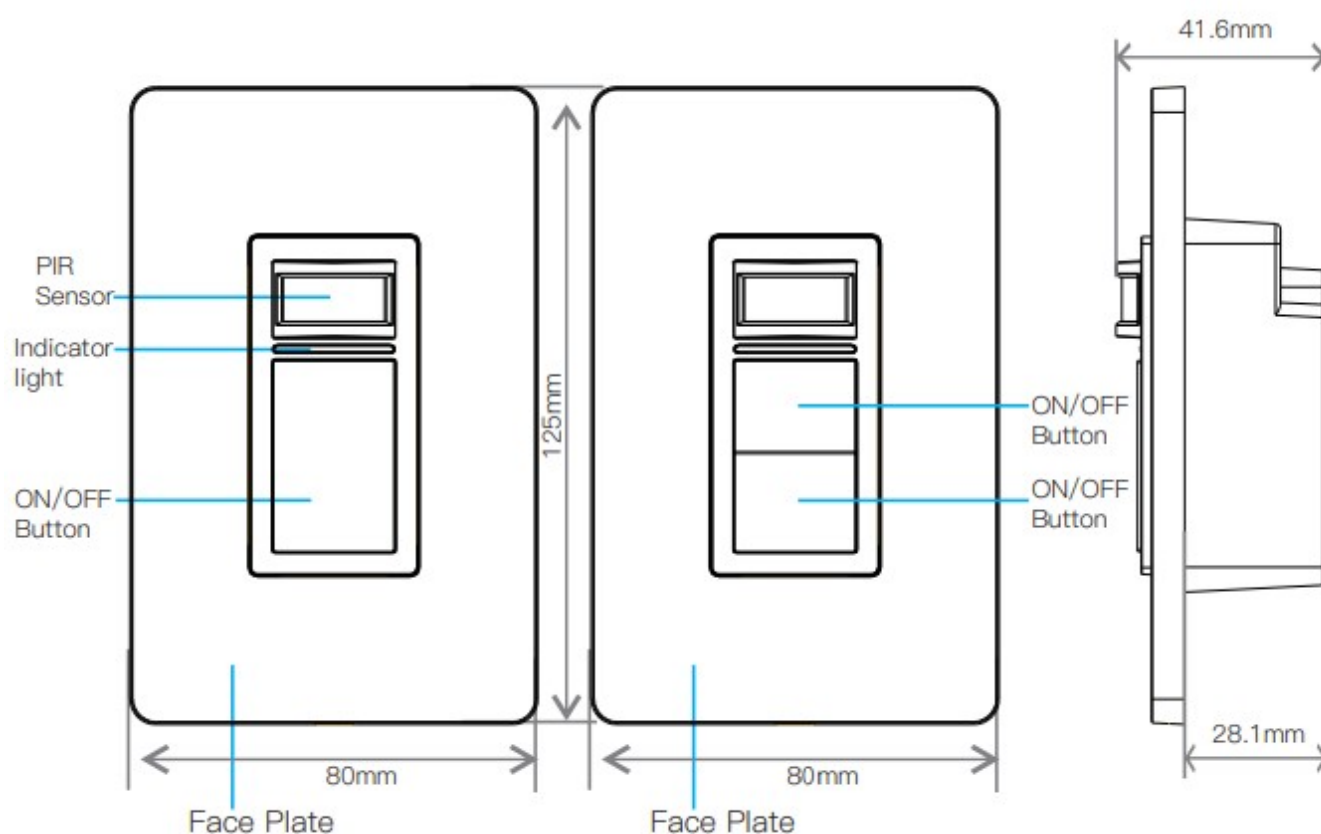
Smart switch\*1, Switch cover\*1 , Screw\*2 , Wire nuts\*4 User manual\*1 Mark lables\*1 Before installation, please confirm whether the accessories are complete. If there are incomplete accessories or other problems, please email us or contact us on Amazon or via email on the after-sale card. (In addition, product styles and designs may be improved, and the accessories may be changed in due course).

## Specifications

Type	Smart PIR Sensor Switch
Model	MFA05/MFA06
Power supply mode	Neutral+Live Wire
Rated Current	15A(Max)
Rated Voltage	AC110-125V~50/60Hz
Rated Power	1650W(MAX)
Wireless Frequency	2.4GHZ
Wireless Standard	IEEE802.11 b/g/n

### Indicator light meaning

Indicator	Status	Discription
Blue	Flash Rapidly	Ready for connection (Default Mode Only)
Blue	Flash Slowly (1 time every 3S )	Ready for connection (AP Mode Only)
Blue light is always on	Off	Turn the light off
Green light is always on	On	Turn the light on
Blue	Flash Slowly	No Internet



**Safety Notice:**

- Cut off the power before installation
- Please use it only when it's installed with RCD or current leakage protector at home
- A neutral wire is needed to power the switch.

### Product installation guide:

1. Connect the mobile phone to the indoor WiFi and download the APP “Smart Life” that controls the switch (please scan the QR code below to download).

Find out “Smart Life”app in Apple app store, Google Play, or scan the QR code bellow and install it. The free app “Smart Life” is compatible with mobile devices the support IOS8.0 above, Android 4.4 above.

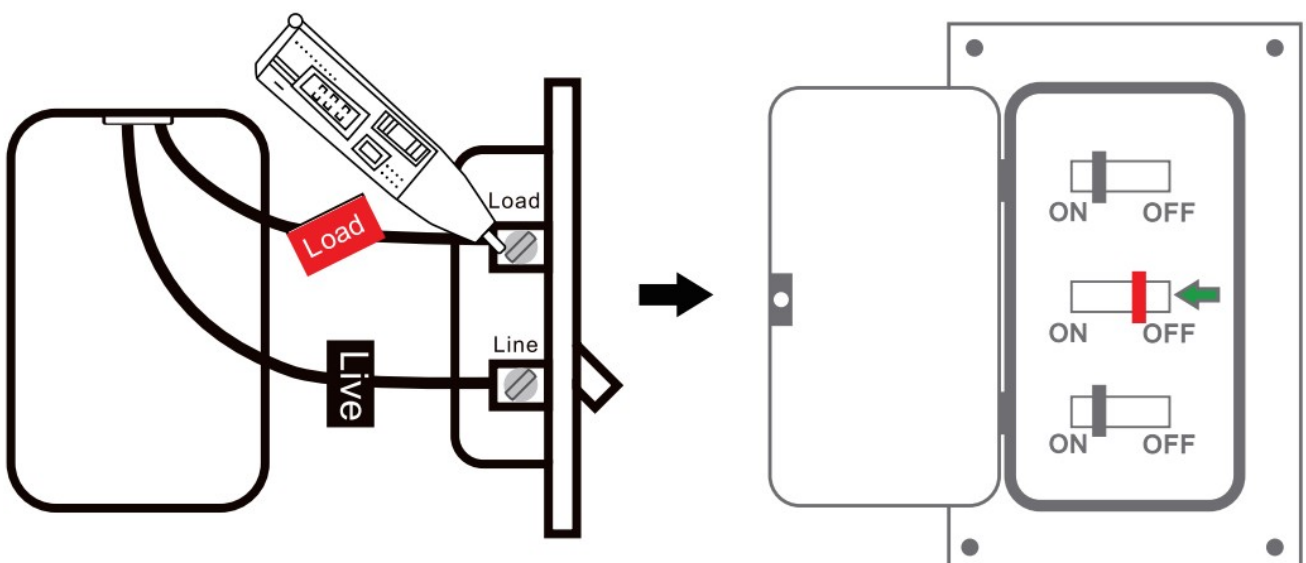


<https://smartapp.tuya.com/smartlife>

Enter the register interface, input the email address/phone number for getting the verification code to register an account. Please just login if you already have a Smart Life account.

2. Open the old switch and carefully pull it out of the wall, first use a test pen to distinguish the live wire and the load wires, meanwhile mark them with labels, and then find the main switch of the lamp in the circuit breaker to turn it off.

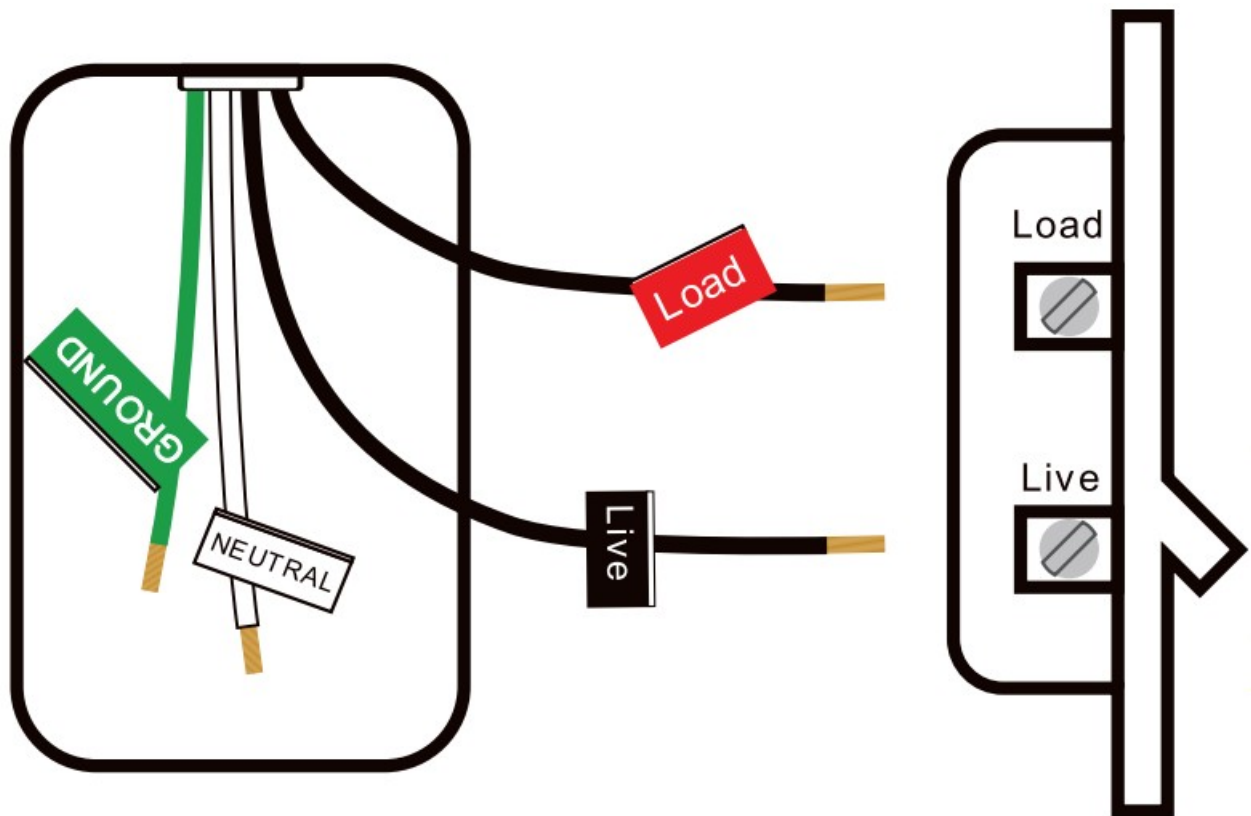
(After turning off the main power switch, please use a test pencil to reconfirm whether the power has been cut off).



3. After turning off the power, find the white wire and other wires that need to be installed in the cassette and mark them. Remove the old switch after marking.

(If you cannot find the white wire, you cannot do the installation by yourself. In this case, you must consult a professional electrician).

PS: Please remove the old switch after finding the four wires, otherwise please install the wires back to their original position or consult a professional electrician.



Usually:

White represents the neutral line.

Black represents the fire line.

The green or a single bare copper wire represents the ground wire.

The above content is for reference only and cannot be used as a standard.

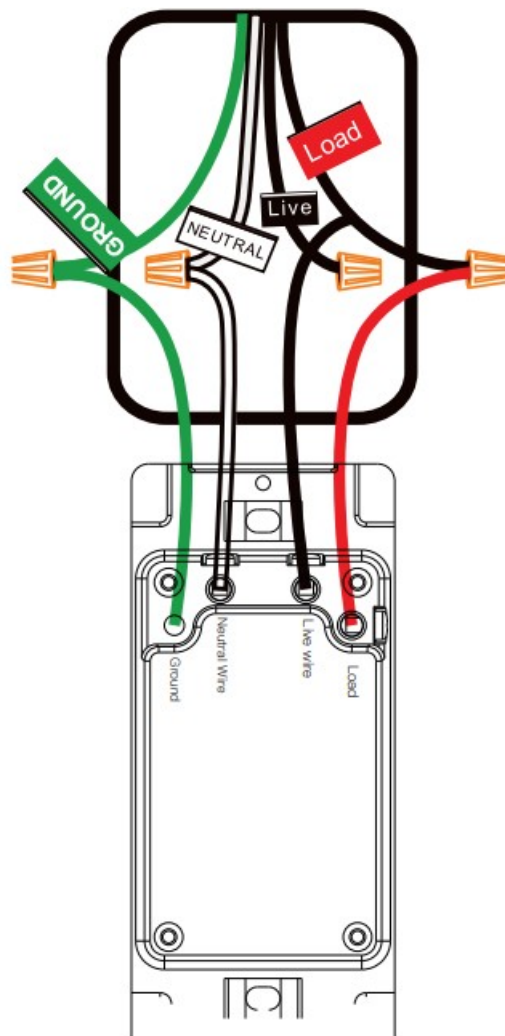
4. Connect the corresponding wire to the product with a wire nut:

green wire on the switch **connect with** ground line,

white wire on the switch **connect with** neutral line,

black wire on the switch **connect with** fire line,

red wire on the switch **connect with** load line.



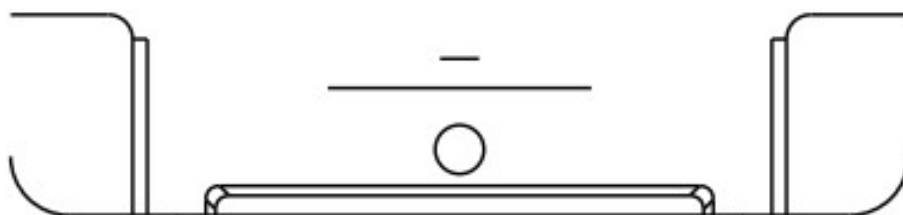
After the installation is complete, turn on the circuit breaker. Then you can control the switch by pressing the button/touching.

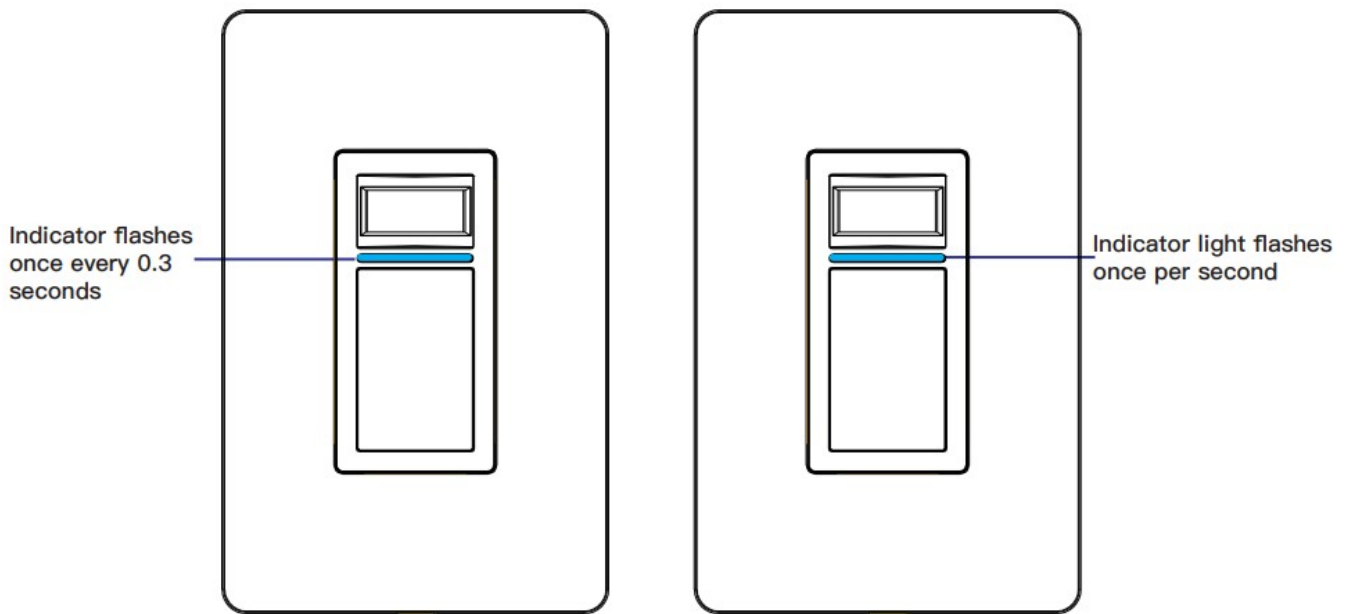
##### 5. Network distribution instructions:

This product has two network connection modes: EZ mode and AP mode. Note: Each mode only lasts for three minutes in the state of “to be connected”. If the connection cannot be completed within three minutes, you need to press and hold the setting again to do the connection one more time (switching method between the two modes: press and hold the switch key for 5-10 seconds until the indicator light is on).

**EZ mode:** After long press, the switch indicator flashes once every 0.3 seconds, it shows that the switch is in the state of EZ mode, in this state, it supports APP “Auto Scan” mode and WiFi quick connection mode in “Add Manually” block. (Supports simultaneous connection of multiple switches).

**AP mode:** After long press, the switch indicator light flashes once per second, it shows that the switch is in the state of AP mode, in this state only the hotspot distribution network mode (compatible mode) in the APP “Add Manually” is supported. (Only supports one switch connection).

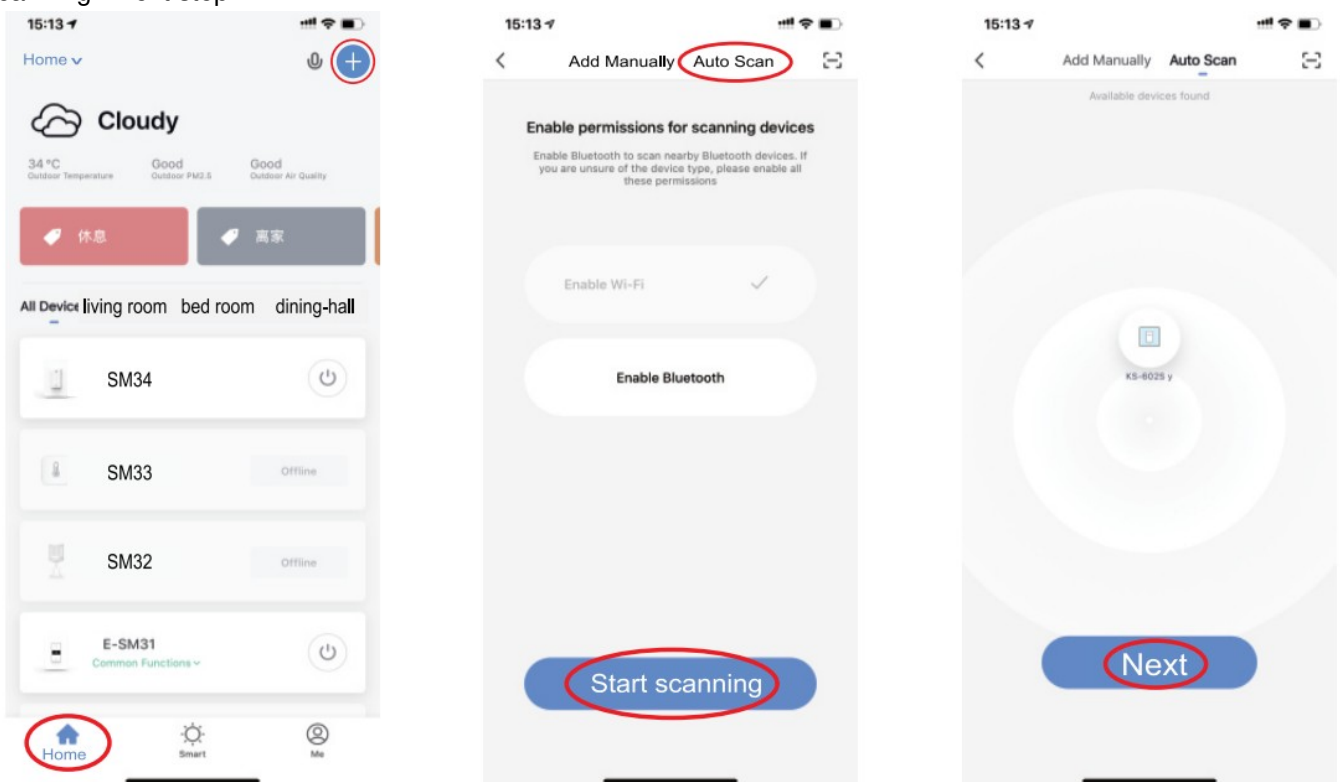




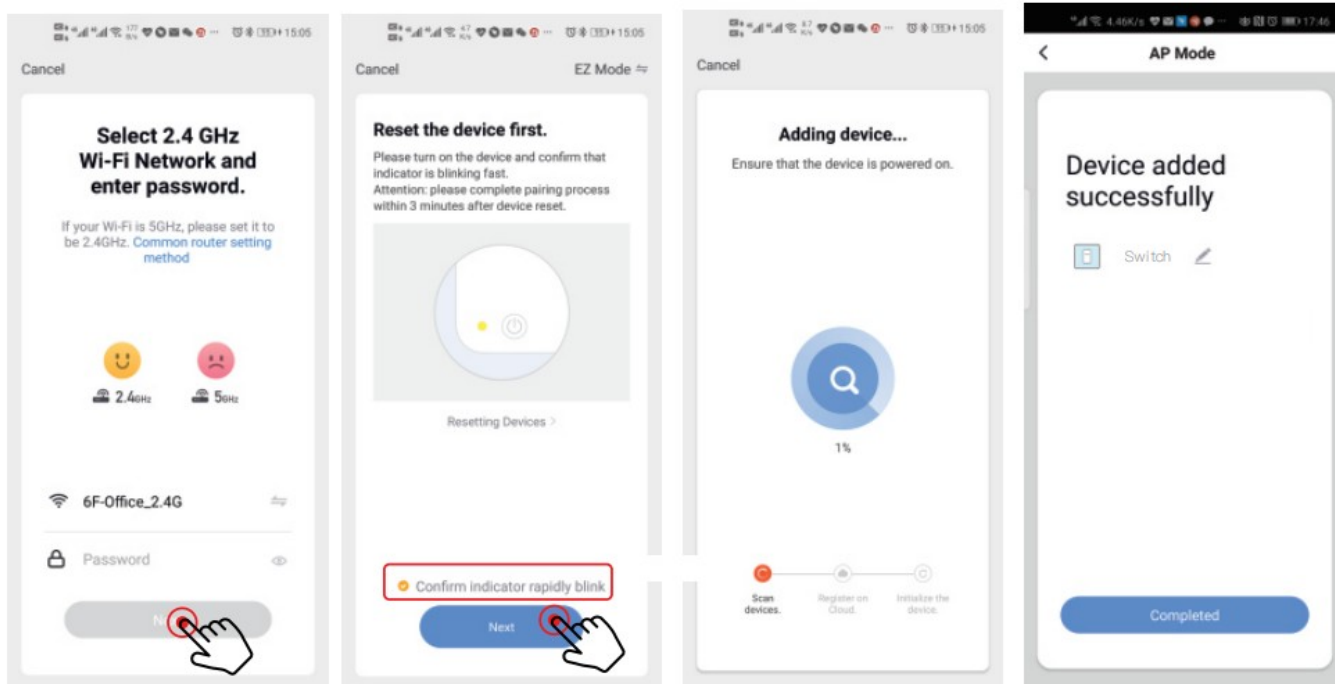
**EZ mode**

**AP mode**

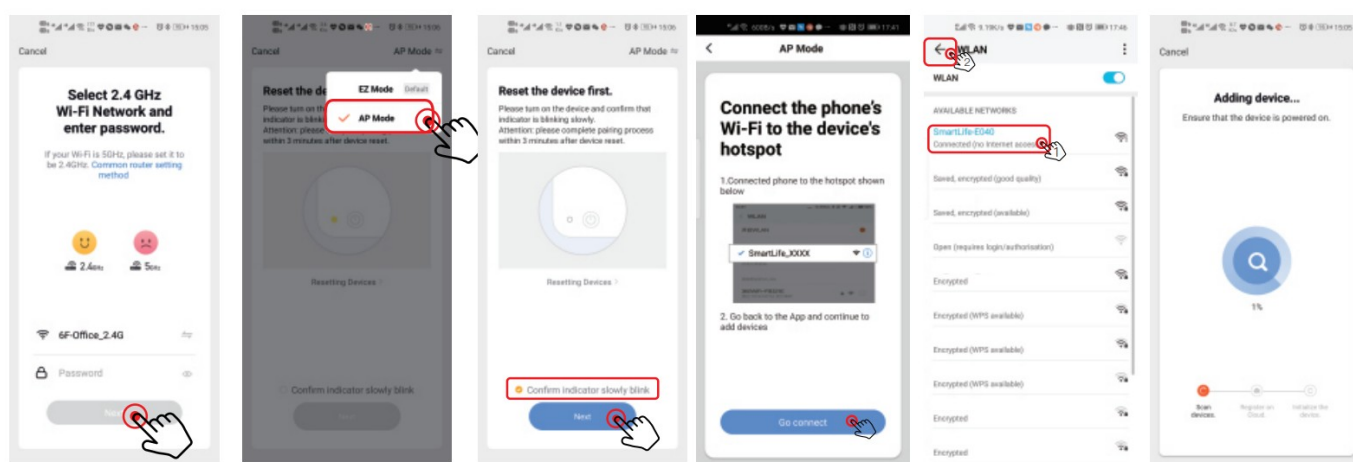
**EZ mode network configuration method ①:** Open the Smart Life APP→My Home interface→click the plus icon in the upper right corner→choose “Auto Scan”→ set WiFi password→confirm that the switch is in EZ mode→Start scanning→next step.



**EZ mode network configuration method ②:** Open the smart life APP→My Home interface→click the plus icon in the upper right corner→Add manually→select the electrical switch (WiFi)→set WiFi password→Next→confirm that the switch is in the EZ mode→search device →Done



AP mode network configuration method: open the Smart Life APP→My Home interface→click the plus icon in the upper right corner→manually add→select the electrical switch (WiFi)→set the WiFi password→click the option on the upper right corner→select AP Mode → confirm that the switch is in AP Mode→Next→ Go to connect→automatically switch to the wireless LAN interface of the mobile phone and select the wireless LAN signal named SmartLife-XXXX→back to the smart life APP interface to automatically complete the network configuration→ Done.



### Precautions:

1. Do not modify or disassemble the product by yourself.
2. Do not hit the equipment with sharp objects.
3. The product is a household device, do not install it on industrial environment.
4. Do not install the switch in a metal house or a place that may shield the wireless signal.
5. The live wire and neutral wire of the switch must be connected via a same leakage protector, otherwise it is easy to cause tripping and other phenomena.
6. After installation, please fix the panel firmly before powering on the switch. Live operation is strictly prohibited.
7. The mobile phone control is related to the strength of the WiFi signal connected to the switch. It is recommended to use a router with a strong signal.
8. There is an upper limit on the number of smart products controlled by ordinary routers. If it is overloaded, it will automatically squeeze out smart products with relatively weak signals. (Generally, the upper limit is 10-12, including computer phones, etc).
9. If you do not install and use it for a long time, please store it in a dry environment at -10C°-40C°, and keep it out



of the reach of children.

10. Provide one-year warranty.

## SERVICE

1. During the free warranty period, if the product breaks down during normal use, we will offer free maintenance for the product.
2. Natural disasters/man-made equipment failures, disassembly and repair without the permission of our company, no warranty card, products beyond the free warranty period, etc., are not within the scope of free warranty
3. Any commitment (oral or written) made by the third party (including the dealer/service provider) to the user beyond the warranty scope shall be executed by the third party
4. Please keep this warranty card to ensure your rights
5. Our company may update or change the products without notice. Please refer to the official website for the updates.

## RECYCLING INFORMATION



All products marked with the symbol for separate collection of waste electrical and electronic equipment (WEEE Directive 2012/19 / EU) must be disposed of separately from unsorted municipal waste. To protect your health and the environment, this equipment must be disposed of at designated collection points for electrical and electronic equipment designated by the government or local authorities.

Correct disposal and recycling will help prevent potential negative consequences for the environment and human health. To find out where these collection points are and how they work, contact the installer or your local authority.

## WARRANTY CARD

### Product Information

Product Name \_\_\_\_\_

Product Type \_\_\_\_\_

Purchase Date \_\_\_\_\_

Warranty Period \_\_\_\_\_

Dealer Information \_\_\_\_\_

Customer's Name \_\_\_\_\_

Customer Phone \_\_\_\_\_

Customer Address \_\_\_\_\_

### Maintenance Records

Failure date \_\_\_\_\_

Cause Of Issue \_\_\_\_\_

Fault Content \_\_\_\_\_

Principal \_\_\_\_\_

Thank you for your support and purchase at we Moes, we are always here for your complete satisfaction, just feel free to share your great shopping experience with us.



If you have any other need, please do not hesitate to contact us first, we will try to meet your demand.

## FOLLOW US



moessmart



moes\_smart



moes\_smart



moes\_smart



MOES.Official



[www.moeshouse.com](http://www.moeshouse.com)



Enjoy Our Smart Life



**WENZHOU NOVA NEW ENERGY CO.,LTD**

Address: Power Science and Technology Innovation Center, NO.238,  
Wei 11 Road, Yueqing Economic Development Zone, Yueqing,  
Zhejiang, China

Tel: +86-577-57186815

Email: [service@moeshouse.com](mailto:service@moeshouse.com)

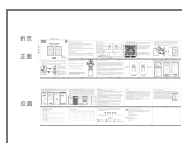


AMZLAB GmbH

Laubenhof 23, 45326 Essen

Made In China

## Documents / Resources



[Moes MFA05 Smart Switch](#) [pdf] Instruction Manual

MFA05, MFA06, MFA05 Smart Switch, MFA05, Smart Switch, Switch

## References

- [M MOES Smart: Create Your Smart Life With Smart Home Devices](#)