



# MOES LR-NAGW01 Bluetooth Gateway Plug Instructions

[Home](#) » [MOES](#) » MOES LR-NAGW01 Bluetooth Gateway Plug Instructions 

## Contents

- [1 MOES LR-NAGW01 Bluetooth Gateway Plug Instructions](#)
- [2 Product specification](#)
  - [2.1 Plug](#)
- [3 Gateway](#)
- [4 Product introduction](#)
- [5 Product preparation](#)
- [6 Distribution network settings](#)
- [7 Product function](#)
  - [7.1 Plug function](#)
  - [7.2 Timing](#)
  - [7.3 Countdown](#)
  - [7.4 Device Setting](#)
  - [7.5 Voice control](#)
- [8 Gateway function](#)
- [9 Product Q & A](#)
- [10 Read More About This Manual & Download PDF:](#)
- [11 Documents / Resources](#)
- [12 Related Posts](#)

MOES LR-NAGW01 Bluetooth Gateway Plug Instructions



Product specification

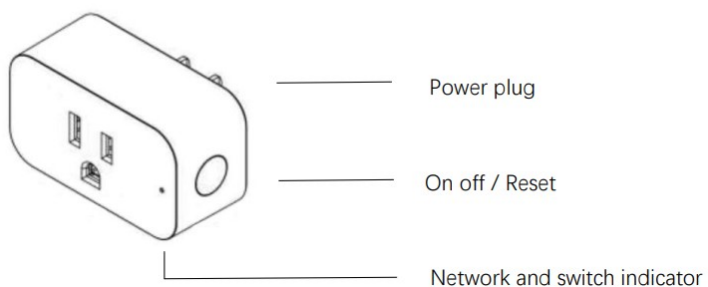
Plug

|                   |  |
|-------------------|--|
| Product name      | Bluetooth Gateway Plug                   |
| Product model     | LR-NAGW01                                |
| Maximum current   | 15A                                      |
| maximum power     | 1800W                                    |
| Rated voltage     | 120V                                     |
| Product size      | 2.67 x 1.49 x 2.10mm Including plug pins |
| Environment       | 0-50°C & ≤80%RH                          |
| Net weight        | About 0.12 lbs                           |
| Wireless protocol | WiFi+BLE / BLE Mesh                      |

## Gateway

|  |  |
|--|--|
| <b>Transmission speed</b>                | <b>1Mbps</b>   |
| <b>Communication distance (diameter)</b> | 10-30m   |
| <b>Frequency band</b>                    | 2.4G   |
| <b>Power consumption</b>                 | 20mA   |
| <b>Support equipment</b>                 | Mesh/BLE: Electrician, lighting, smart lock, sensor<br>Beacon: socket & plug, lighting, lighting<br>(continuously updated) |

## Product introduction



## Product preparation

Connect the device to the power supply and ensure that the mobile phone is connected to the WiFi network in the 2.4G Hz band, and turn on Bluetooth;

■ Download and open the App. (Android system searches for “graffiti intelligence” in major app stores, and IOS system searches for “graffiti intelligence” in app stores or scans the QR code on the outer package / manual to download and install app. If you download and use it for the first time, please click the “register” button to register your account; if you already have an account number, click the “login” button. After logging in, follow the instructions to create a family.)

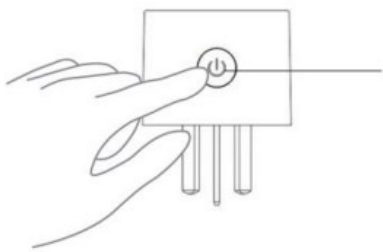


## Distribution network settings

After you create your home, click the add device button on the front page of App.

Select “smart plug” in the “device” page.

Long press the switch button 5S above, to the distribution network Indicator Flashing, according to the App prompt operation, add plug.



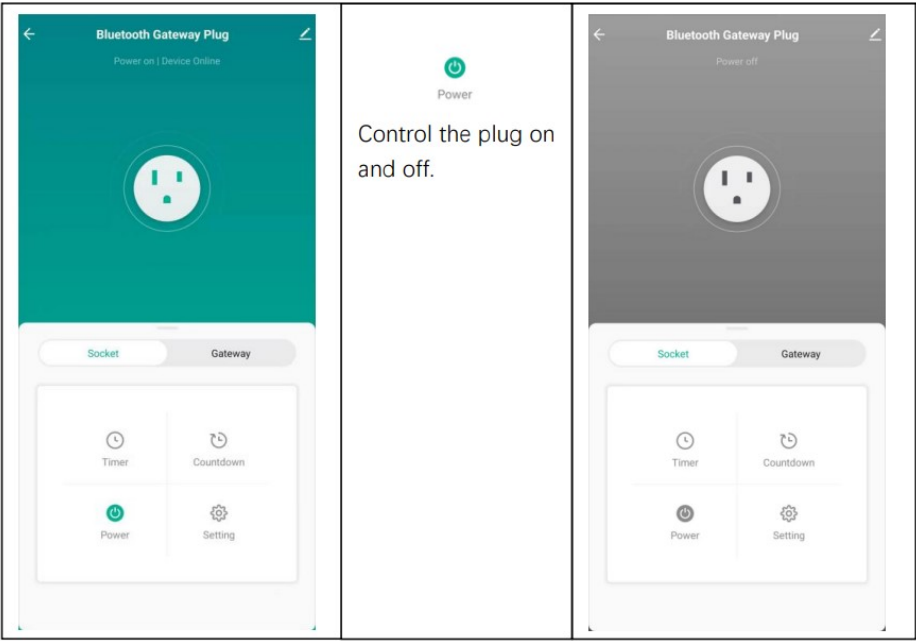
switch button

■ After successful addition, you can find the device in my family list.

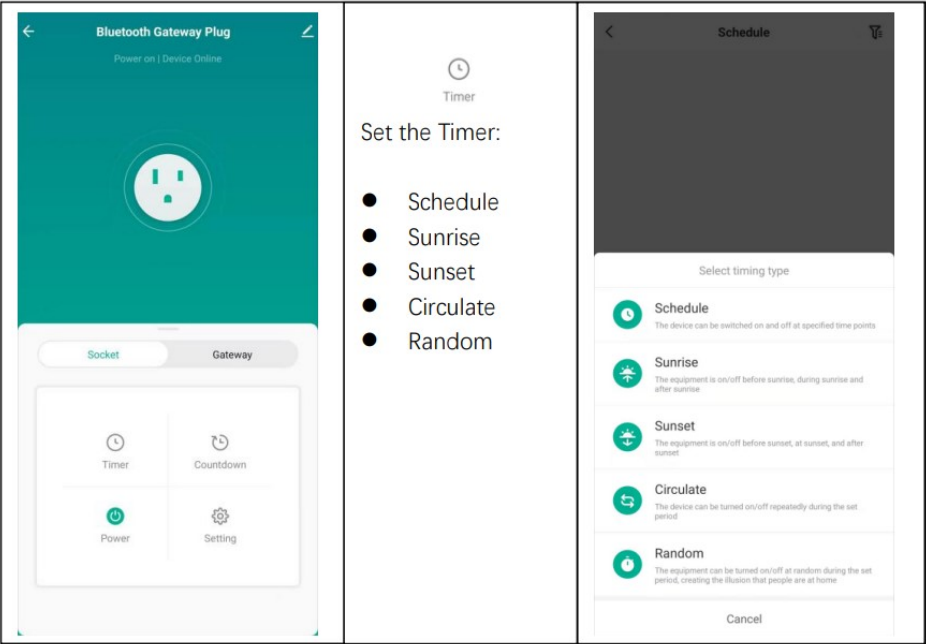
## Product function

### Plug function

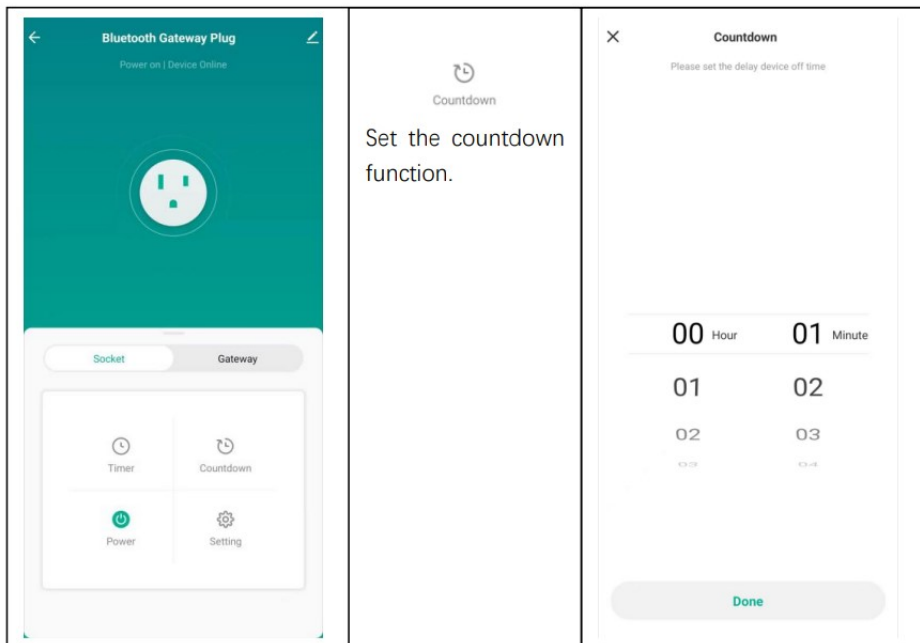
After the device is added successfully, click“” can be used as smart plug. On off:



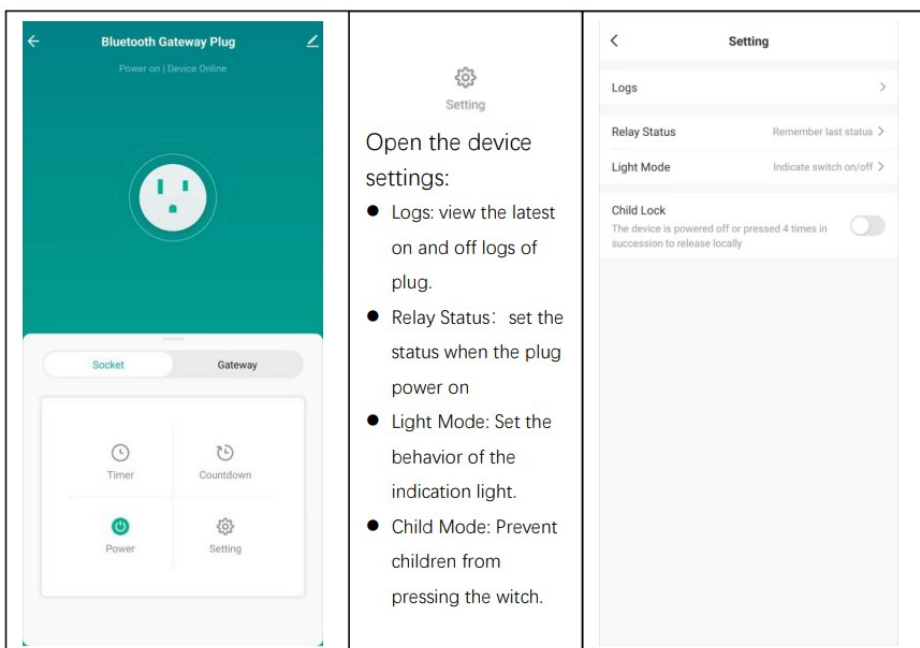
Timing



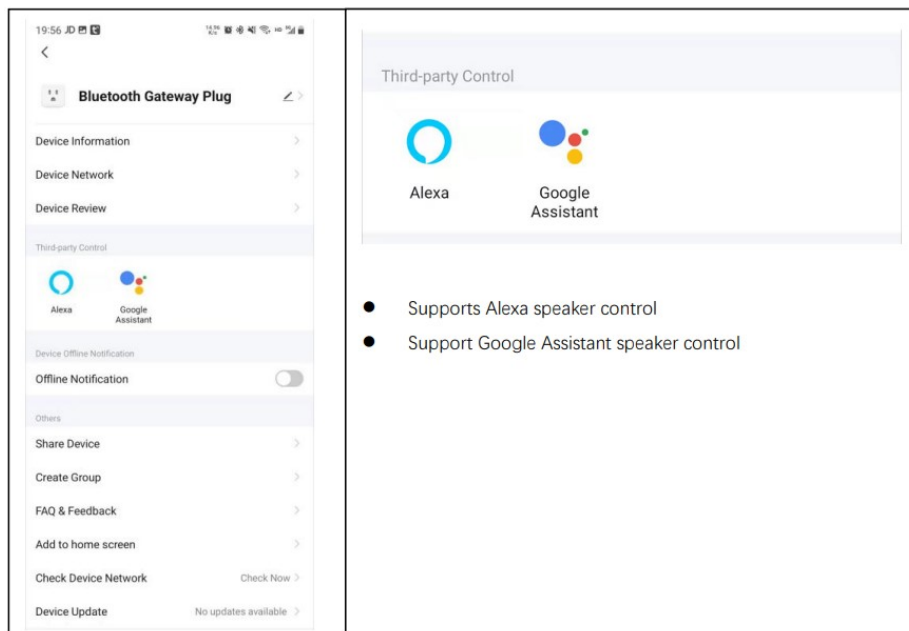
Countdown




## Device Setting



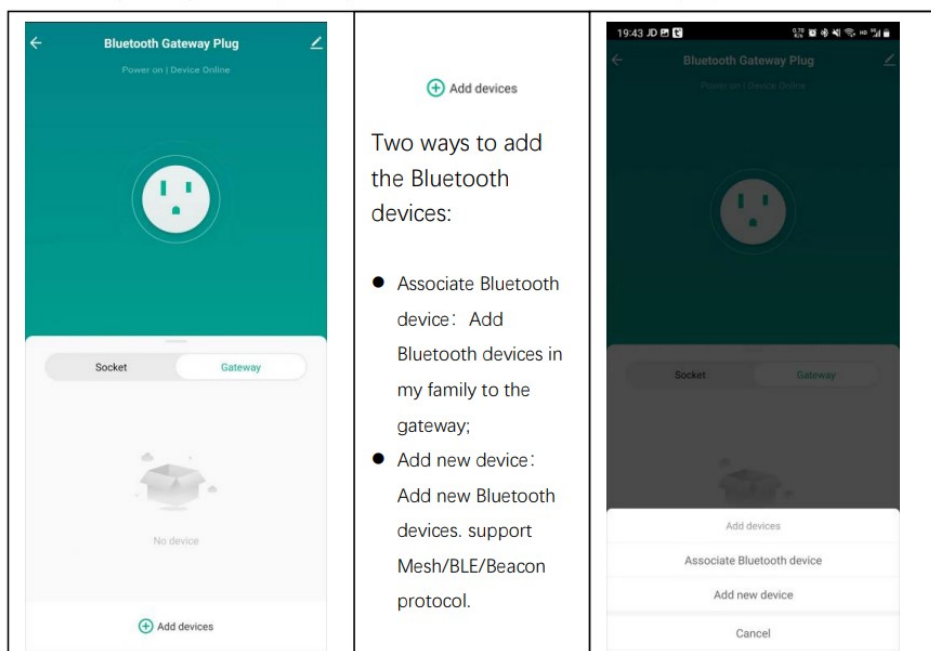
## Voice control



## Gateway function

Clicking“  ” enter the gateway function interface

Bluetooth gateway: The gateway function can work whether the plug on or off.



## Product Q & A

Q. Does the product support Wi Fi connection?

A: The product supports Bluetooth connection in the downlink (both mesh and ble devices support it), Wi Fi connection in the uplink, and only supports 2.4G band Wi Fi;

Q. Can the Bluetooth device previously added through the mobile phone be remotely controlled through the gateway now?

A: Yes, the user can drag the Bluetooth device that has been added separately to the gateway to realize remote control, etc.

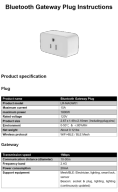
Q. What is the farthest distance between the sub equipment and the gateway when ensuring stable control?

A: 35m indoor and 130m outdoor, stable control;

Q. How many sub devices can be connected?  
A: 128;

*Read More About This Manual & Download PDF:*

**Documents / Resources**



[MOES LR-NAGW01 Bluetooth Gateway Plug](#) [pdf] Instructions

LR-NAGW01 Bluetooth Gateway Plug, LR-NAGW01, LR-NAGW01 Gateway Plug, Bluetooth Gateway Plug, Gateway Plug, Bluetooth Gateway, Gateway