



Moes BS-FB-V3 Smart Bluetooth Fingerbot User Manual

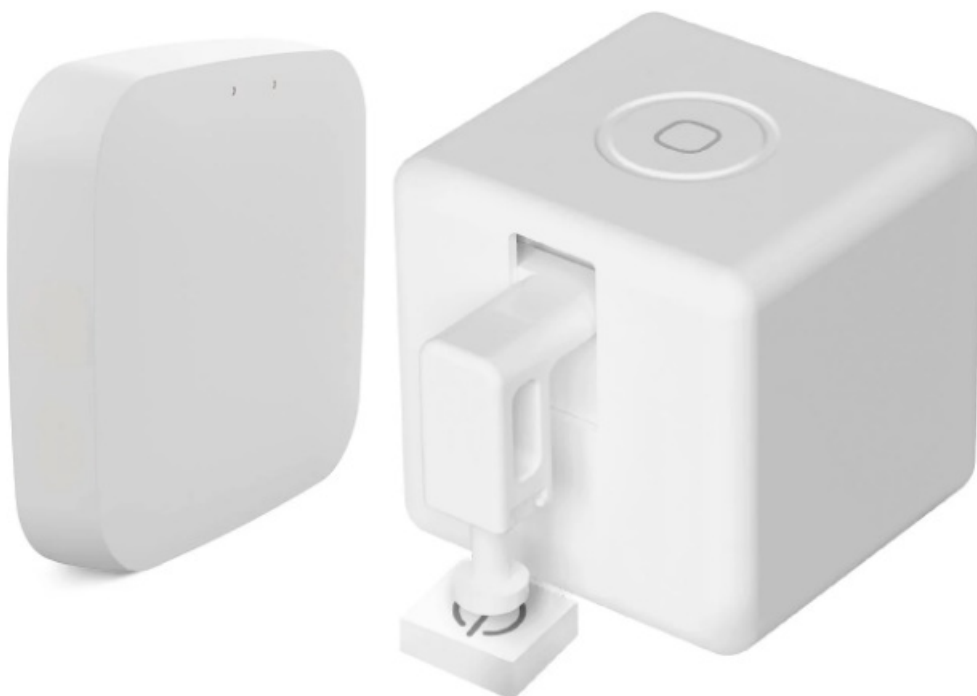
[Home](#) » [MOES](#) » Moes BS-FB-V3 Smart Bluetooth Fingerbot User Manual 

Contents

- [1 Moes BS-FB-V3 Smart Bluetooth Fingerbot](#)
- [2 Product Information](#)
- [3 Product Specifications](#)
- [4 Device Installation](#)
- [5 Documents / Resources](#)
 - [5.1 References](#)



Moes BS-FB-V3 Smart Bluetooth Fingerbot



Product Information

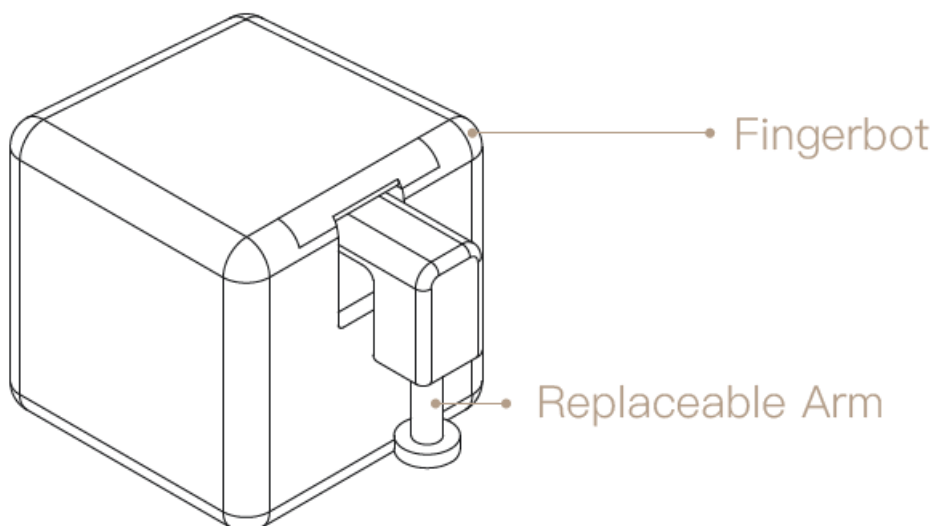
- **Overview:** Fingerbot is the world's smallest robot designed to control different types of buttons and switches. It allows you to control your existing home appliances with robotic clicks, such as switching lights via the app, scheduling tasks, activating devices with voice commands, and remotely powering on your office PC.
- **Replaceable Arm:** Fingerbot's arm is modular and replaceable to meet different needs in diverse situations.
- **App Compatibility:** The Fingerbot can be controlled using the MOES App, which provides a customized service for controlling scenes through Siri, widgets, and scene recommendations. It is recommended over the Tuya smart/Smart Life app.
- **Device Control:** You can control the Fingerbot directly via Bluetooth using the app. It also supports schedulers for at certain times. With the Fingerbot Bridge (sold separately), you can control the Fingerbot through the Internet from anywhere. Additionally, you can connect the Fingerbot with voice assistants like Google Home Assistant and Amazon Alexa for voice control.

Product Specifications

- **Dimensions:** 32 x 32 x 32 mm / 1.3 x 1.3 x 1.3 inch Product Weight: 32g / 1.1 oz
- **Communication Protocol:** BLE 4.2
- **Functionalities:** App Control, Voice Control, Cloud Control, Scheduler
- **Charging Port:** USB Type-C
- **Stall Torque:** 1.6 kgf-cm
- **Working Temperature:** -10 ~ 55°C / 14 °F ~ 131 °F Battery Capacity: 500 mAh

Overview

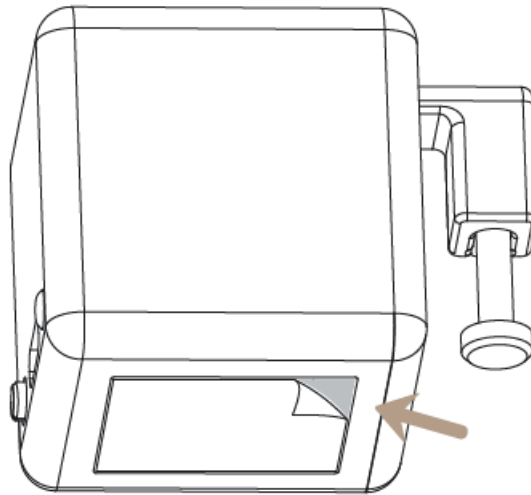
- Fingerbot is the world's smallest robot for smartly controlling different types of buttons and switches. It can control your existing home appliances with robotic clicks.
- Switch lights via App, schedule a morning coffee, activate your vacuum cleaner with voice command, and remotely power on your office PC. Now all these become effortless with Fingerbot.



Device Installation

1. Clean the surface of button or switch panel where you want to install Fingerbot.
2. Attach Fingerbot to the panel using a double sided tape provided in the Fingerbot package.
3. Connect your Fingerbot with the App and calibrate the movement of Fingerbot's robotic arm to fit your switches and buttons.

After installation, we recommend resting Fingerbot for 24 hours to reach maximum adhesion.



Preparation for use

1. Download MOES App on App store or scan the QR code.



Moes application is much more compatible than Tuya smart / smart life application. It also provides a new customized service for controlling scenes through Siri, widgets and scene recommendation.

(Note: Tuya smart / Smart Life app is still working, but moes app is highly recommended)

2. Registration or Log in.

Download "MOES" Application.

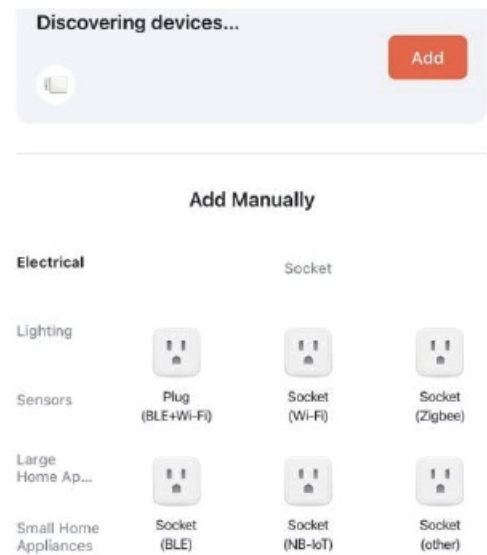
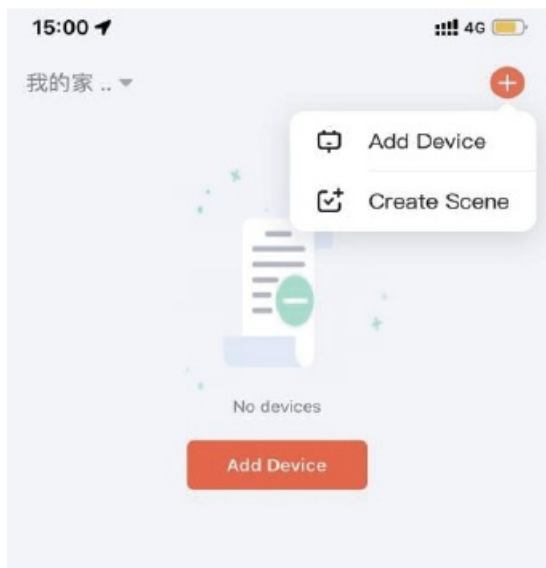
Enter the Register/Login interface; tap "Register" to create an account by entering your phone number to get verification code and "Set password". Choose "Log in" if you already have a MOES account.

Steps for connecting the APP to the device

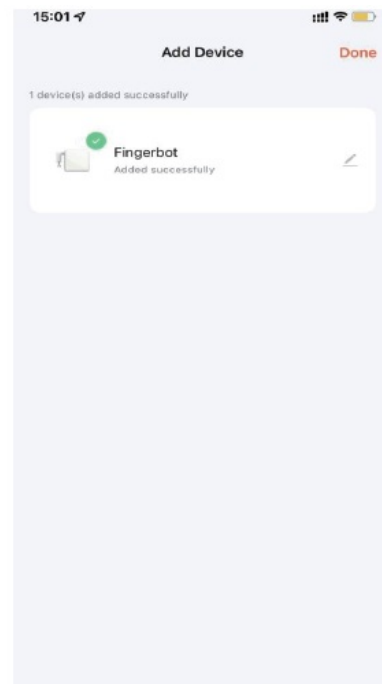
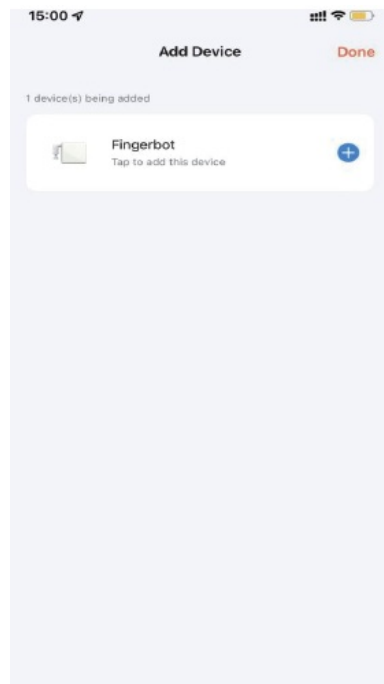
1. First, make sure your phone's Bluetooth is turned on. If not, turn on Bluetooth.
2. Confirm the blue light is flashing, if not, Press and hold the reset /function button until the prompt tone is heard

and the button is released, and the blue light slow flashing device enters the distribution network state.

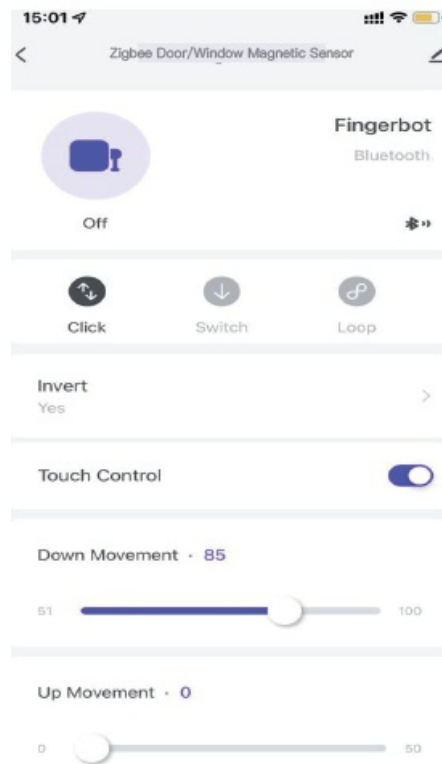
3. Open MOES App and Click“+” Choice“Add Device”, then the prompt page will automatically show on the screen. Click “Add”.



4. Add the device successfully, you can edit the name of the device to enter the device page by click “Done”.



5. Click“Done”to enter the device page to enjoy your smart life with home automation.



Device Control

- **App Control**

- You can control Fingerbot directly via Bluetooth with the App

- **Scheduler**

- You can set schedulers in the App to automatically activate Fingerbot at certain times.

- **Remote control**

- With a Fingerbot Bridge (needs to be purchased separately), you can control your Fingerbot through the Internet from anywhere.

- **Voice Control**

- With a Fingerbot Bridge, you can connect Fingerbot with voice assistants such as Google Home Assistant and Amazon Alexa. You can set up voice commands in the App to active voice-control function.

- **Device Reset**

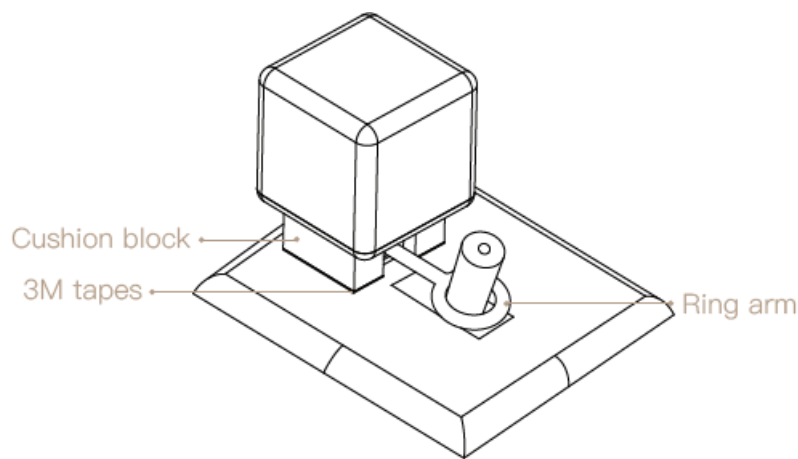
- To reset your Fingerbot
- Please long-press the reset button for 5 seconds to reset the device.

- **Robotic Arm Extension**

- With the modular design, the arm of Fingerbot is replaceable in order to meet different needs in diverse situations.

- **Straight Arm**

- You can install the arm by following the picture below. We provide three straight arms with different lengths to assist Fingerbot better fitting various button-control cases.



Warnings

- The product is non-waterproof. Do not install it on an underwater appliance.
- The product contains a lithium battery, therefore prohibited in the humid, high-temperature environment.
- Do not hinder the movement of the Fingerbot's arm when it is working. Otherwise it may cause the arm to fall off and damage to the motor inside Fingerbot.

SERVICE

- Thank you for your trust and support to our products, we will provide you with a two-year worry-free after-sales service (freight is not included), please do not alter this warranty service card, to safeguard your legitimate rights and interests. If you need service or have any questions, please consult the distributor or contact us.
- Product quality problems occur within 24 months from the date of receipt, please prepare the product and the packaging, applying for after-sales maintenance in the site or store where you purchase; If the product is damaged due to persona reasons, a certain amount of maintenance fee shall be charged for repair.
- We have the right to refuse to provide warranty service if:
 - Products with damaged appearance, missing LOGO or beyond the service term
 - Products that are disassembled, injured, privately repaired, modified or have missing parts
 - The circuit is burned or the data cable or power interface is damaged
 - Products damaged by foreign matter intrusion (including but not limited to various forms of fluid, sand, dust, soot, etc.)

RECYCLING INFORMATION

All products marked with the symbol for separate collection of waste electrical and electronic equipment (WEEE Directive 2012/19 / EU) must be disposed of separately from unsorted municipal waste. To protect your health and the environment, this equipment must be disposed of at designated collection points for electrical and electronic equipment designated by the government or local authorities. Correct disposal and recycling will help prevent potential negative consequences for the environment and human health. To find out where these collection points are and how they work, contact the installer or your local authority.

WARRANTY CARD

Product Information

- Product Name_____

- Product Type_____
- Purchase date_____
- Warranty Period_____
- Dealer Information_____
- Customer's Name_____
- Customer Phone_____
- Customer Address_____

Maintenance Records

Failure date	Cause Of Issue	Fault Content	Principal

Thank you for your support and purchase at we Moes, we are always here for your complete satisfaction, just feel free to share your great shopping experience with us.



If you have any other need, please do not hesitate to contact us first, we will try to meet your demand.

@moes_smart

www.moes.net

EVATOST CONSULTING LTD

- **Address:** Suite 11, First Floor, Moy Road Business Centre, Taffs Well, Cardiff, Wales, CF15 7QR
- **Tel:** +44-292-1680945
- **Email:** contact@evatmaster.com

Maker WENZHOU NOVA NEW ENERGY CO.,LTD

- **Address:** Power Science and Technology Innovation Center, NO.238, Wei 11 Road, Yueqing Economic Development Zone, Yueqing, Zhejiang, China
- **Tel:** +86-577-57186815
- **After Service Email:** service@moeshouse.com

Documents / Resources



[Moes BS-FB-V3 Smart Bluetooth Fingerbot](#) [pdf] User Manual
BS-FB-V3 Smart Bluetooth Fingerbot, BS-FB-V3, Smart Bluetooth Fingerbot, Bluetooth Fingerbot, Fingerbot

References

- [M MOES Smart: Create Your Smart Life With Smart Home Devices](#)
- [User Manual](#)