



Moes BE09-220509 ZigBee Smart IR Remote Control Universal Infrared Remote Control Instruction Manual

[Home](#) » [MOES](#) » Moes BE09-220509 ZigBee Smart IR Remote Control Universal Infrared Remote Control Instruction Manual 

Moes BE09-220509 ZigBee Smart IR Remote Control Universal Infrared Remote Control



Contents

- [1 Description](#)
- [2 Safety Information](#)
- [3 Product Specification](#)
- [4 Preparation for Use](#)
- [5 Steps For Connecting the APP to the Device](#)
- [6 Enter Smart Life Skill in Alexa APP](#)
- [7 Voice Control Instruct](#)
- [8 SERVICE](#)
- [9 RECYCLING INFORMATION](#)
- [10 Customer Support](#)
- [11 Documents / Resources](#)
- [12 Related Posts](#)

Description

Users can design and realize intelligent application scenarios of ordinary electrical appliances at home by adding a universal remote control.

Safety Information

Risk of Electric Shock: Electricity can cause personal injury and property damage if handled improperly. If you are not sure about any part of these instructions, please seek professional assistance from a qualified electrician.

Product Specification

Product Model	UFO-R11
Power Input	AAA battery x2
Stand-by Power	≤ 0.5W
Controlling Distance	≤ 8m(Finally effect by environment)
IR frequency	38KHZ
Operating Temperature	0 °C ~ 50 °C
Operating Humidity	≤ 85% RH (no condensation)
Wireless Protocol	Zigbee
Execution standard	GB/T9254-2008
Product Size	68x68x27mm

Preparation for Use

APP Download Smart Life APP

Please scan the QR code or download Smart Life on App store.



Register or Login

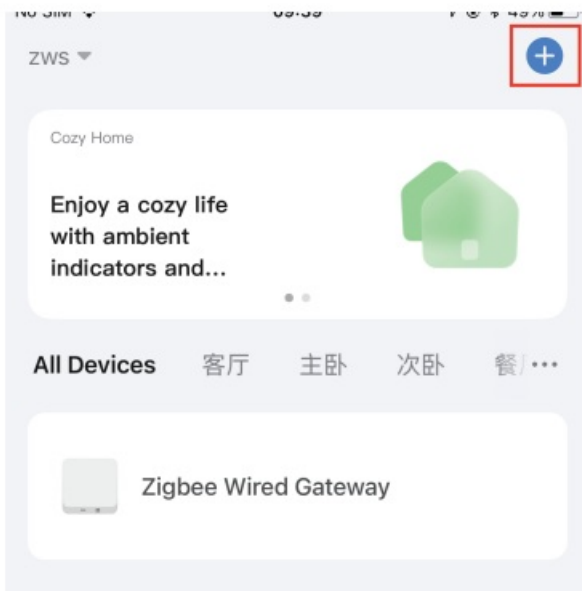


- Download “Smart Life” Application.
- Enter the Register/Login interface; tap “Register” to create an account by entering your phone number to get verification code and “Set password”. Choose “Log in” if you already have a Smart Life account.

Steps For Connecting the APP to the Device

Method One: Scan the QR code to configure the network guide.

1. Make sure your Smart Life/Tuya Smart APP has successfully connected to a Zigbee gateway.



①



②





Zigbee infrared remote

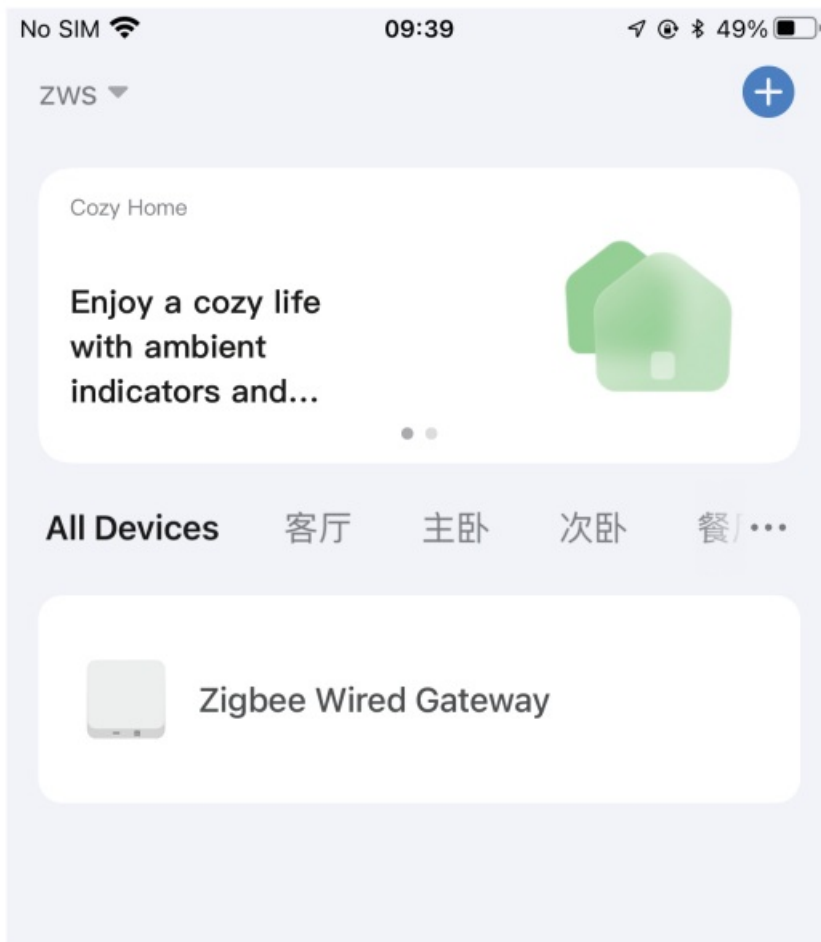


④

Please connect the device according to the configuration process.

Method Two:

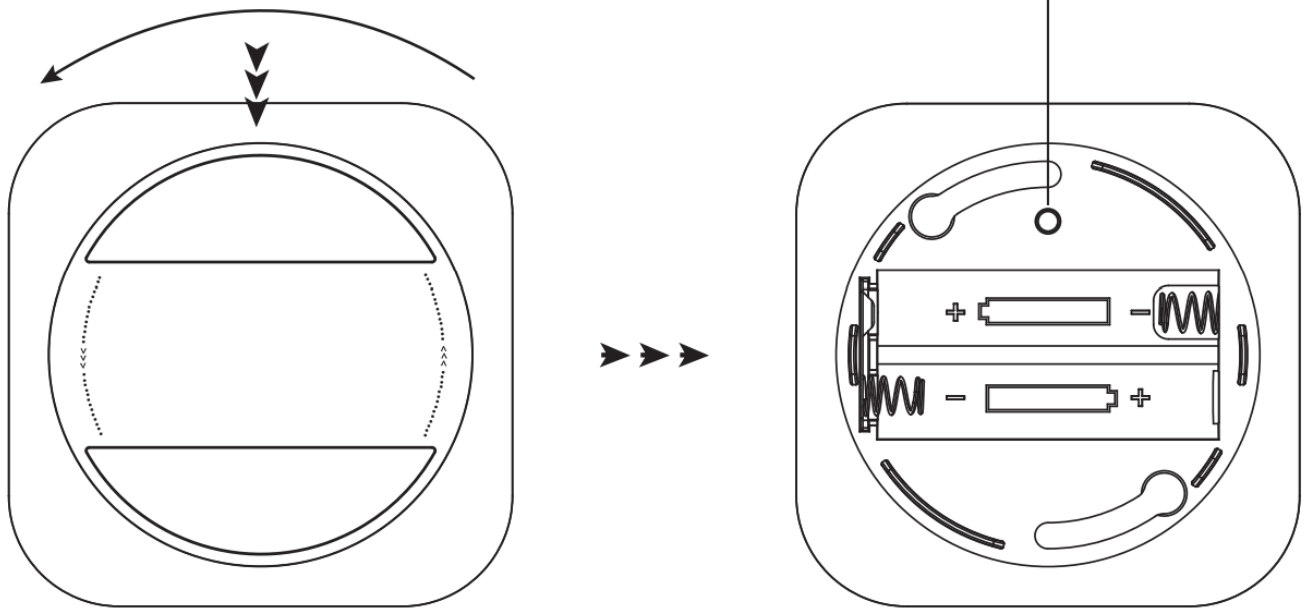
1. Make sure your Smart Life/Tuya Smart APP has successfully connected to a Zigbee Cable Gateway.



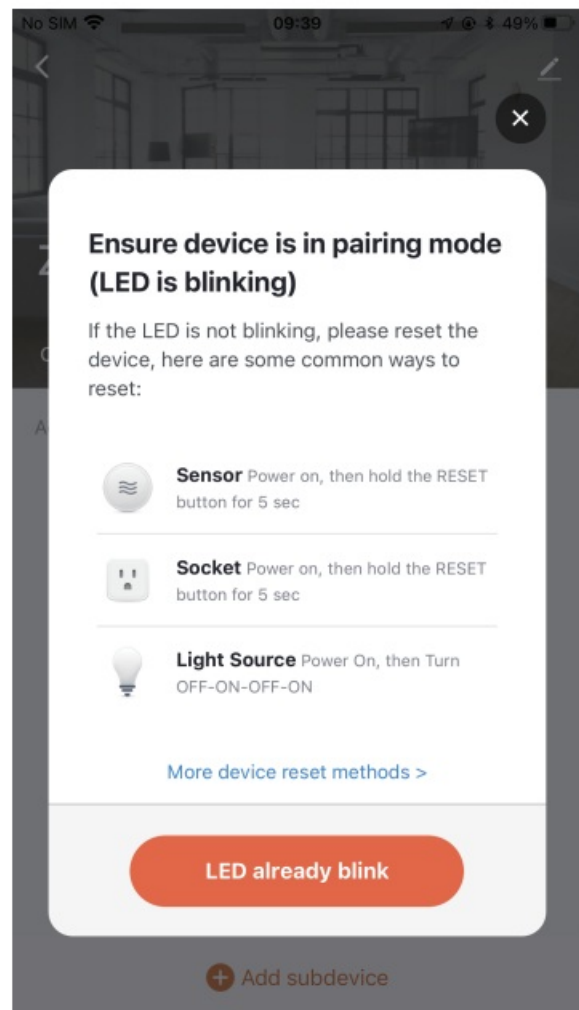
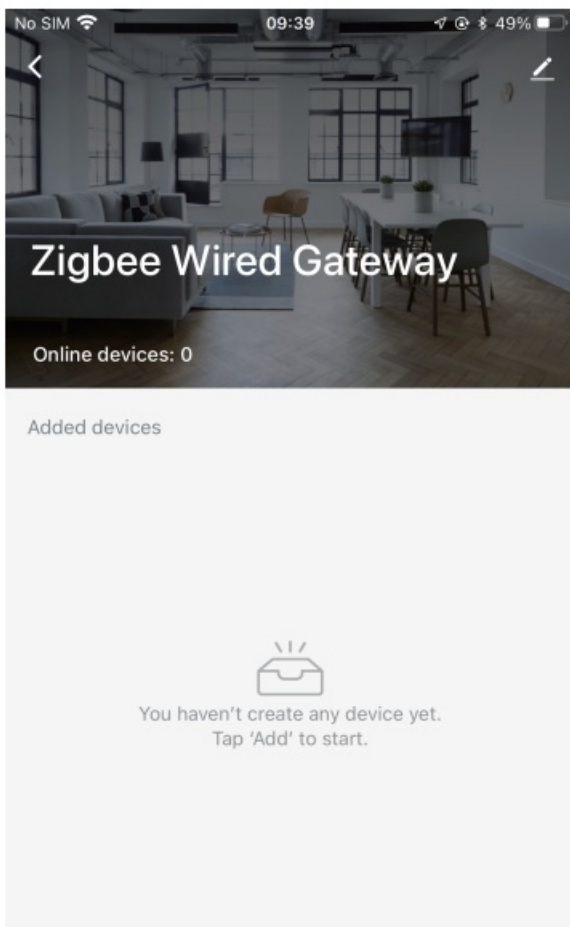
Note: Make sure that the product is within the effective coverage of the Zigbee network of the smart host (Cable Gateway) to ensure an effective connection between the product and the Zigbee network of the smart host (Cable Gateway).

2. Put the batteries into the battery compartment of the device. Press the reset button for more than 5 seconds until the indicator flashes, then add the device according to the App instructions.

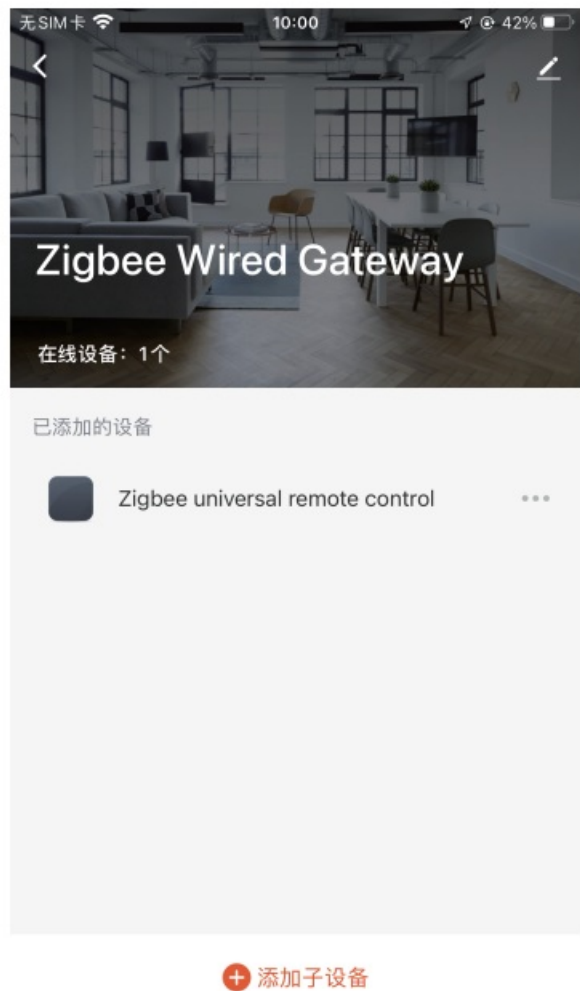
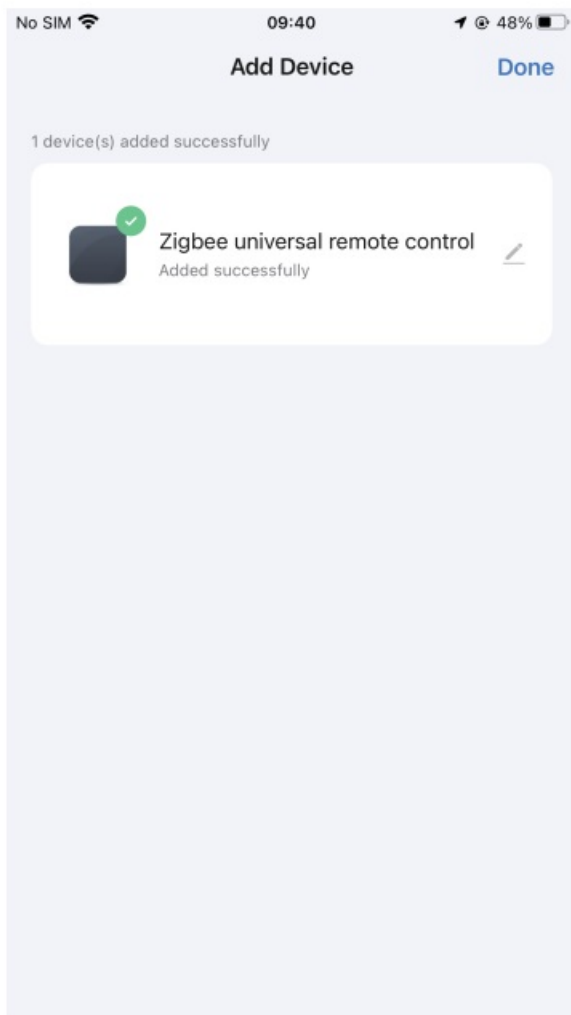
The knob opens the back cover and places the battery



3. Enter the cable gateway. Please follow the picture below to finish as, Add subdevice LED already blink, and the configuration would take about 1 0-120s, which is up to the network condition.



4. Add the device successfully, you can edit the name of the device to enter the device page by click "Done".



5. Click “Done” to enter the device page to enjoy your smart life with home automation.

Enter Smart Life Skill in Alexa APP

1. Complete product networking configuration in the App Complete the device’s networking configuration according to the prompts in the App. Nots: In the App, change the name of the device to an easily identifiable name such as Alexa; names are usually in English, such as “bad light”.
2. Configure the Amazon Echo device
(If you have already configured Amazon Echo, you can skip this step. The following instructions are based on the IOS client.)
 1. Make sure you Amazon Echo device is powered on and connected to a Wi-Fi network.
 2. Open the Alexa APP on your phone and log in.
 3. Tap on the menu in the upper left corner of the Home page, select “Settings” and tap •Set Up A New Device” to set up the Amazon Echo.
 4. Choose your Amazon Echo device type and language for connecting.
 5. Press and hold the small dot on the device until the light turns yellow.
 6. Click “Continue” to connect to the hotspot, connect to the Amazon Echo hotspot, and return to the APP page.
 7. Click “Continue” to find and connect to your home Wi-Fi network.
 8. Amazon Echo will take a few minutes to try to connect to the network.
 9. After the network connection is successful, tap continue”. An introduction video will appear. After the

video ends, tap “continue” to jump to the Alexa Home page.

10. You have now completed the Amazon Echo’s configuration process.

3. Key step – Link Skill

1. Tap on “Skills” in the Alexa App menu.
2. Then search for “App Name”. Tap “Enable” to enable the Skill.
3. Enter the App account and password, then tap “Link Now” to link your App account to enable the Skill.

Now you can start your smart home journey.

4. Common commands

Control the device via voice commands, now you can control your smart device with Echo. You can control your device (such as your bedroom light) with the following commands:

Voice Control Instruct

Device	Alexa command list
AC	Alexa, turn on ‘device name’ Alexa, turn off ‘device name’ Alexa, set ‘device name’ temperature to H degrees Alexa, increase ‘device name’ temperature Alexa, decrease ‘device name’ temperature
STP	Alexa, turn on ‘device name’ Alexa, turn off ‘device name’ Alexa, channel up on ‘device name’ Alexa, channel down on ‘device name’ Alexa, volume up/down ‘device name’ Alexa, change channel of ‘device name’ to ‘channel number’
1V	same as STP
Device	Google Home command list
AC STP	Hi google, turn on/tum off the ‘device name’ Hi google, set ‘device name’ temperature to ** degrees Hi google, make ‘device name’ warmer/cooler Hi google, turn on/tum off the ‘device name’
TV	Hi google, turn on/tum off the ‘device name’

SERVICE

1. During the free warranty period, if the product breaks down during normal use, we will offer free maintenance for the product
2. Natural disasters/man-made equipment failures, disassembly and repair without the permission of our company, no warranty card, products beyond the free warranty period, etc., are not within the scopes of free warranty.
3. Any commitment (oral or written) made by the third party (including the dealer/service provider) to the user beyond the warranty scope shall be executed by the third party.
4. Please keep this warranty card to ensure your rights.
5. Our company may update or change the products without notice. Please refer to the official website for the updates.

RECYCLING INFORMATION



■ All products marked with the symbol for separate collection of waste electrical and electronic equipment (WEEE Directive 2012/19 / EU) must be disposed of separately from unsorted municipal waste. To protect your health and the environment, this equipment must be disposed of at designated collection points for electrical and electronic equipment designated by the government or local authorities. Correct disposal and recycling will help prevent potential negative consequences for the environment and human health. To find out where these collection points are and how they work, contact the installer or your local authority.

Thank you for your support and purchase at we Moes, we are always here for your complete satisfaction, just feel free to share your great shopping experience with us.



If you have any other need please do not hesitate to contact us first we will try to meet your demand

Customer Support

Follow Us



@moessmart



@moes_smart



MOES.Official



@moes_smart



@moes_smart



www.moes.net



N0.238, Wei 11 Road, Yueqing Economic Development Zone,
Yueqing, Zhejiang, China
Tel: +86-577-57186815


Email: service@moeshouse.com



AMZLAB GmbH
Laubenhof 23, 45326 Essen
Made In China



Documents / Resources

	<p>Moes BE09-220509 ZigBee Smart IR Remote Control Universal Infrared Remote Control [pdf] Instruction Manual</p> <p>BE09-220509 ZigBee Smart IR Remote Control Universal Infrared Remote Control, BE09-220509, ZigBee Smart IR Remote Control Universal Infrared Remote Control, Remote Control Universal Infrared Remote Control, Universal Infrared Remote Control, Infrared Remote Control, Remote Control, Control</p>
---	---