



Moes AJ21-211021 ZigBee Smart Wireless Scene Rotary Switch Instruction Manual

[Home](#) » [MOES](#) » Moes AJ21-211021 ZigBee Smart Wireless Scene Rotary Switch Instruction Manual 

Contents

- [1 Moes AJ21-211021 ZigBee Smart Wireless Scene Rotary Switch](#)
- [2 Product Information](#)
- [3 Control Modes](#)
- [4 Remote Mode](#)
- [5 Scene Mode](#)
- [6 Specifications](#)
- [7 Product Usage Instructions](#)
- [8 Quick Guide](#)
- [9 Dimension](#)
- [10 Specification](#)
- [11 Install the battery](#)
- [12 Remote mode](#)
- [13 Reset / Pairing](#)
- [14 Default mode](#)
- [15 SERVICE](#)
- [16 RECYCLING INFORMATION](#)
- [17 WARRANTY CARD](#)
- [18 Documents / Resources](#)
 - [18.1 References](#)
- [19 Related Posts](#)



Moes AJ21-211021 ZigBee Smart Wireless Scene Rotary Switch



Product Information

The Smart Knob is a wireless remote control device designed for smart lights. It operates using Zigbee 3.0 or Bluetooth Low Energy communication protocols, which allow for a control distance of up to 25m in open areas. The device runs on a CR2032 3V DC battery, and its dimensions are 55 x 440 mm. The Smart Knob can control the color, color temperature, and brightness of compatible smart lights.

Control Modes

The Smart Knob has two control modes: remote mode and scene mode. In remote mode, the knob is operated using a single press, long press, or press and rotate. In scene mode, the knob can be used to activate preset lighting scenes.

Remote Mode

Under remote mode, the following controls are available:

- Single press: Turn the light on or off
- Long press (>3s): Set the light's color
- Press and rotate: Adjust the light's brightness

Note that the exact controls available may vary depending on the model of smart light being used.

Scene Mode

Under scene mode, the following controls are available:

- Single press: Activate a preset lighting scene
- Press and rotate: Adjust the color temperature of the lighting scene
- Rotate: Adjust the brightness of the lighting scene

Specifications

- Power supply: CR2032 3V DC battery

- Communication protocols: Zigbee 3.0, Bluetooth Low Energy
- Control distance: Up to 25m in open areas
- Dimensions: 55 x 440 mm
- Operating temperature: Not specified
- Working humidity: Not specified
- Battery life: Not specified

Product Usage Instructions

To use the Smart Knob, follow these steps:

1. Insert the CR2032 battery into the Smart Knob
2. Pair the Smart Knob with your compatible smart lights using either Zigbee 3.0 or Bluetooth Low Energy communication protocols
3. Select whether you want to use remote mode or scene mode
4. Use the appropriate controls for your chosen mode to adjust your smart lights' color, color temperature, and brightness as desired
5. If using scene mode, activate a preset lighting scene by pressing the Smart Knob once

Note that specific controls available under remote mode and scene mode may vary depending on the model of smart light being used. Refer to the product user manual for more detailed instructions and information.

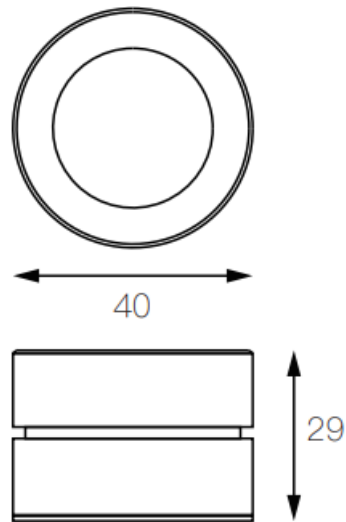


Quick Guide

Remote Mode	
Single Press	On/Off
Long Press >3s	Set color
Rotate	Dimming
Press and Rotate	Set the color temperature
Remote control operate may vary depends on different model of smart light	

Scenario Mode	
Single Press	Setting in APP
Double Clicks	Setting in APP
Long Press	Setting in APP
Rotate to Left	Setting in APP
Rotate to Right	Setting in APP

Dimension

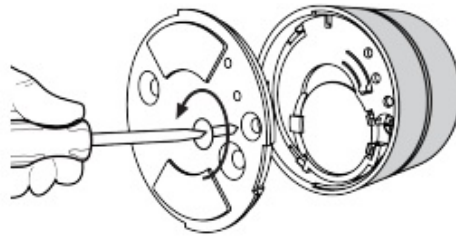


Specification

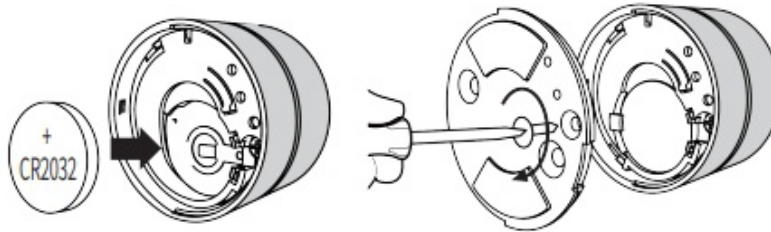
- Power supply: Battery CR2032 3V DC
- Communication: Zigbee 3.0*
Bluetooth Low Energy*
- Control distance: 25m open area
- Dimensions: 40 X 40 X 29mm
- Operating temperature: -10 °C~45 °C
- Working Humidity:<90%RH
- Life of battery: 1 years (General use)

*Available for selected model

Install the battery



1. Remove the screw



2. Install the CR2032 battery

3. Install the cover

Remote mode

Scan the QR code to download APP



Gateway required to connect the device

Reset / Pairing

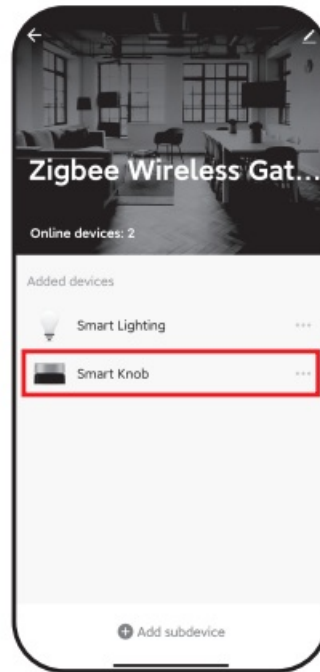
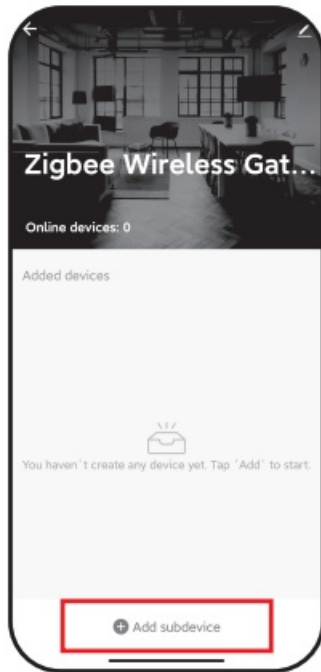


1. Hold "RESET" 6s

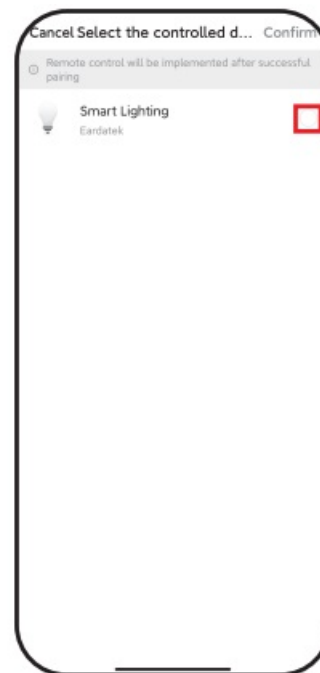


2. LED will start flashing

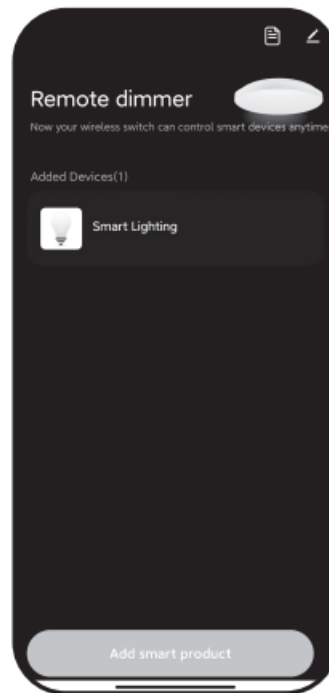
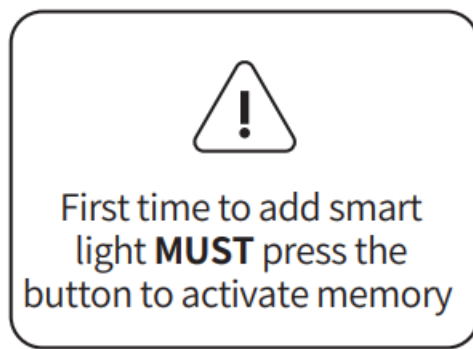
Default mode



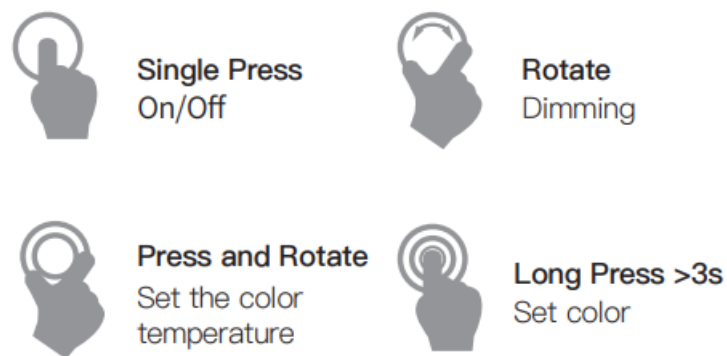
Remote mode (Default operate mode)



Remote mode

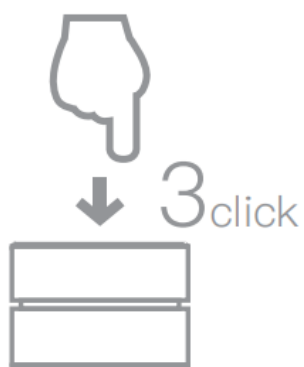


- B. Control description under remote control mode



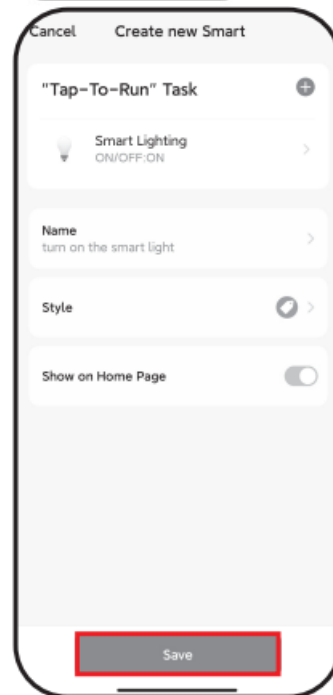
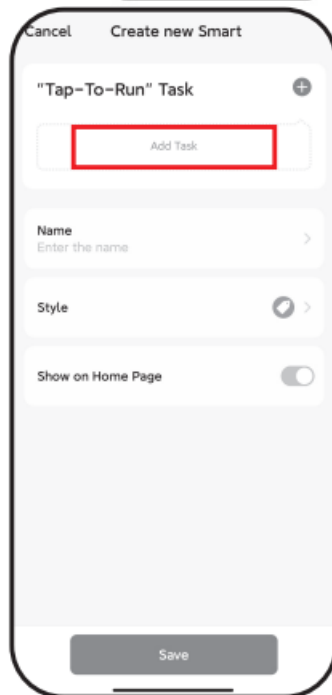
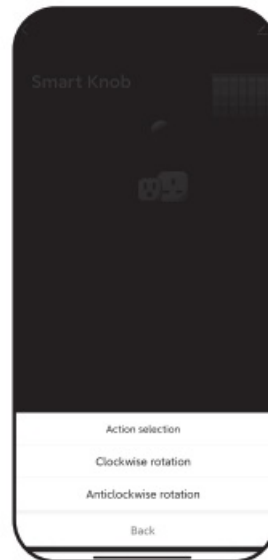
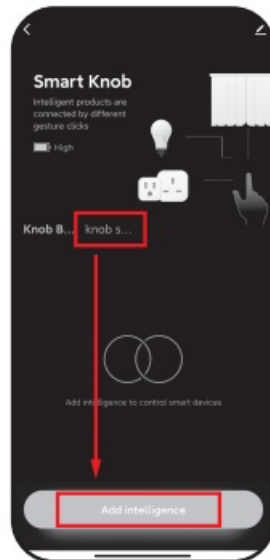
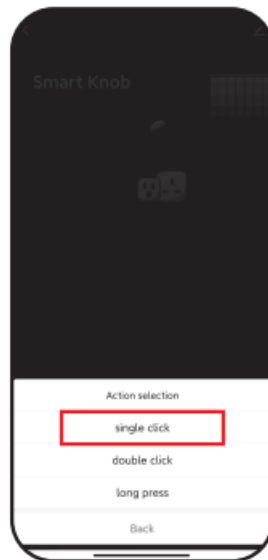
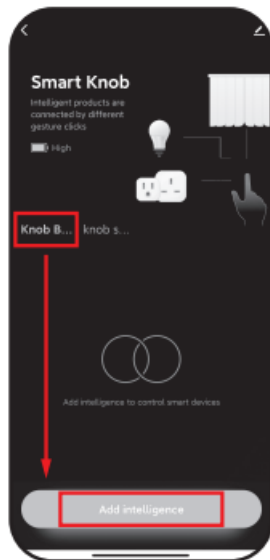
Note: The operates may different depending on the smart lights

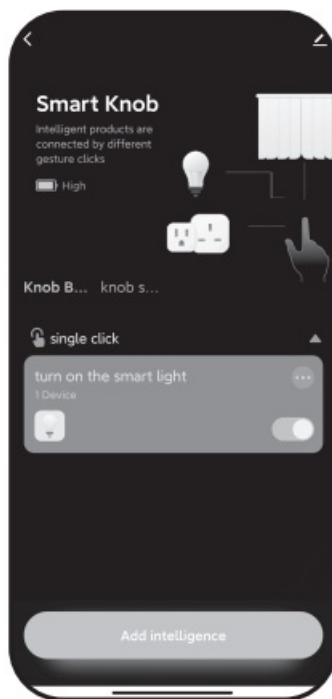
Mode swap



Remote mode ↔ Scene mode

Scene mode





SERVICE

1. During the free warranty period, if the product breaks down during normal use, we will offer free maintenance for the product.
2. Natural disasters/man-made equipment failures, disassembly and repair without the permission of our company, no warranty card, products beyond the free warranty period, etc., are not within the scope of free warranty
3. Any commitment (oral or written) made by the third party (including the dealer/service provider) to the user beyond the warranty scope shall be executed by the third party
4. Please keep this warranty card to ensure your rights
5. Our company may update or change the products without notice.
Please refer to the official website for the updates.

RECYCLING INFORMATION



All products marked with the symbol for separate collection of waste electrical and electronic equipment (WEEE Directive 2012/19 / EU) must be disposed of separately from unsorted municipal waste. To protect your health and the environment, this equipment must be disposed of at designated collection points for electrical and electronic equipment designated by the government or local authorities. Correct disposal and recycling will help prevent potential negative consequences for the environment and human health. To find out where these collection points are and how they work, contact the installer or your local authority.

WARRANTY CARD

Product Information

Product Name _____
Product Type _____
Purchase date _____
Warranty Period _____
Dealer Information _____
Customer's Name _____
Customer Phone _____
Customer Address _____

Maintenance Records

Failure date	Cause Of Issue	Fault Content	Principal

Thank you for your support and purchase at we Moes, we are always here for your complete satisfaction, just feel free to share your great shopping experience with us.



If you have any other need, please do not hesitate to contact us first, we will try to meet your demand.

FOLLOW US



@moessmart



moes



@moes_smart



@moes_smart



@moes_smart



www.moes.net



WENZHOU NOVA NEW ENERGY CO.,LTD

Address: Power Science and Technology
Innovation Center, NO.238, Wei 11 Road,
Yueqing Economic Development Zone,
Yueqing, Zhejiang, China
Tel: +86-577-57186815
Email: service@moeshouse.com



AMZLAB GmbH

Laubenhof 23, 45326 Essen
Made In China

Documents / Resources



[Moes AJ21-211021 ZigBee Smart Wireless Scene Rotary Switch](#) [pdf] Instruction Manual
AJ21-211021 ZigBee Smart Wireless Scene Rotary Switch, AJ21-211021, ZigBee Smart Wireless Scene Rotary Switch, Scene Rotary Switch

References

-  [MOES Smart WiFi ZigBee Smart 2/3 Way Switch Socket Thermostat Sensor](#)

[Manuals+](#).