



# Moer smartcloudraker Bluetooth Mesh Sig Gateway Hub Smart Home Bridge Wireless Remote Controller Instruction Manual

[Home](#) » [Moer](#) » Moer smartcloudraker Bluetooth Mesh Sig Gateway Hub Smart Home Bridge Wireless Remote Controller Instruction Manual 

## Contents

- [1 Moer smartcloudraker Bluetooth Mesh Sig Gateway Hub Smart Home Bridge Wireless Remote Controller](#)
- [2 Product Description](#)
- [3 Specifications](#)
- [4 Packing list](#)
- [5 Status indicator and reset](#)
- [6 Overview](#)
- [7 App Installation](#)
- [8 Device Installation](#)
- [9 Battery Change](#)
- [10 Robotic Arm Extension](#)
- [11 Specifications](#)
- [12 SERVICE](#)
- [13 RECYCLING INFORMATION](#)
- [14 WARRANTY CARD](#)
- [15 Documents / Resources](#)
  - [15.1 References](#)
- [16 Related Posts](#)



**Moer smartcloudraker Bluetooth Mesh Sig Gateway Hub Smart Home Bridge Wireless Remote Controller**



## Product Description

Bluetooth MESH (SIG) gateway is composed of a highly integrated wireless WIFI module, Low energy wireless bluetooth module and main board. Through the Tuya Smart APP, users can implement device addition, device reset, third-party control, and Bluetooth (single point & mesh) group control to meet smart home and other applications.

## Specifications

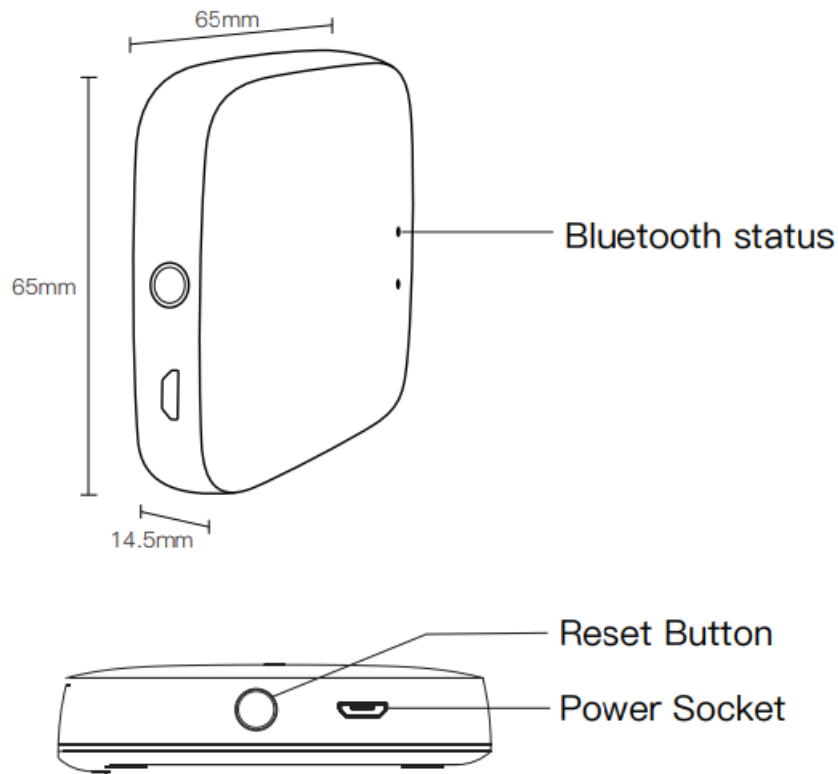
### Physical features

- **Size** 65\*65\*14.5mm
- **Net weight** 29g
- **Status LED indicator** 2 LED
- **Button** 1 (reset)
- **Power** Micro USB DC5V
- **Working current** <1A
- **Adaptor output** 5V 1A
- **Working temperature** -10-55°C
- **Working humidity** 10%-90%RH (non-condensing)
- **Storage temperature** -20-60°C
- **Storage humidity** 5%-90%RH (non-condensing)
- **Hardware interface** 1 Micro-USB
- **Wireless technology** Bluetooth single point & Mesh
- **Antenna type** Built-in onboard antenna

RF characteristics		
	WIFI	Bluetooth single point&Mesh
Wireless frequency	2.400–2.4835 GHz	2.400–2.4835 GHz
Network standard	WIFI 802.11 b/g/n	Bluetooth single point&Mesh
Transmission power	21dBm	7dBm
Channel	CH1–CH11	CH0–CH39 channel 2402MHz;2404MHz; 2406MHz;2408MHz; 2410MHz;2480MHz one channel is added every 2MHz.
Transmission speed	11b:1,2,5.5,11 (Mbps) 11g:6,9,12,18,24, 36,48,54(Mbps) 11n:HT20 MCS0~7 11n:HT40 MCS0~7	1Mbps (BLE 4.2) 2Mbps (BLE5.0)
Network performance		
Wireless encryption	AES 128bitencryption	
	WPA–PSK/WPA2–PSK, WPA/WPA2 security Mechanism	
Network management	long distance App configuration	
	WIFI module firmware upgrade	
	bluetooth module firmware upgrade	

## Packing list

- Bluetooth MESH SIG gateway x1
- Power cable x1
- User manual x1

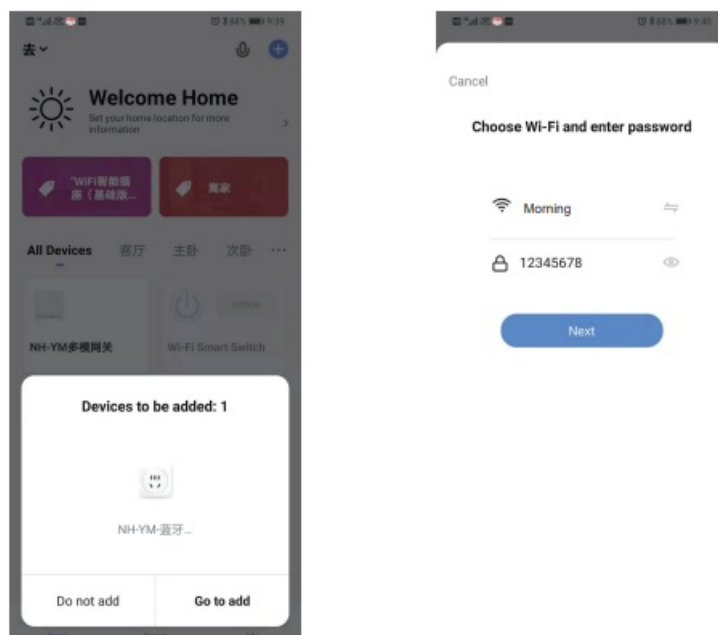


## Status indicator and reset

### Blue: bluetooth status

- Flashing means to be connected and allowed to connect to the network
- keep “on” for a long time, which means device is activated
- keep “off” for a long time, which means device is not activated

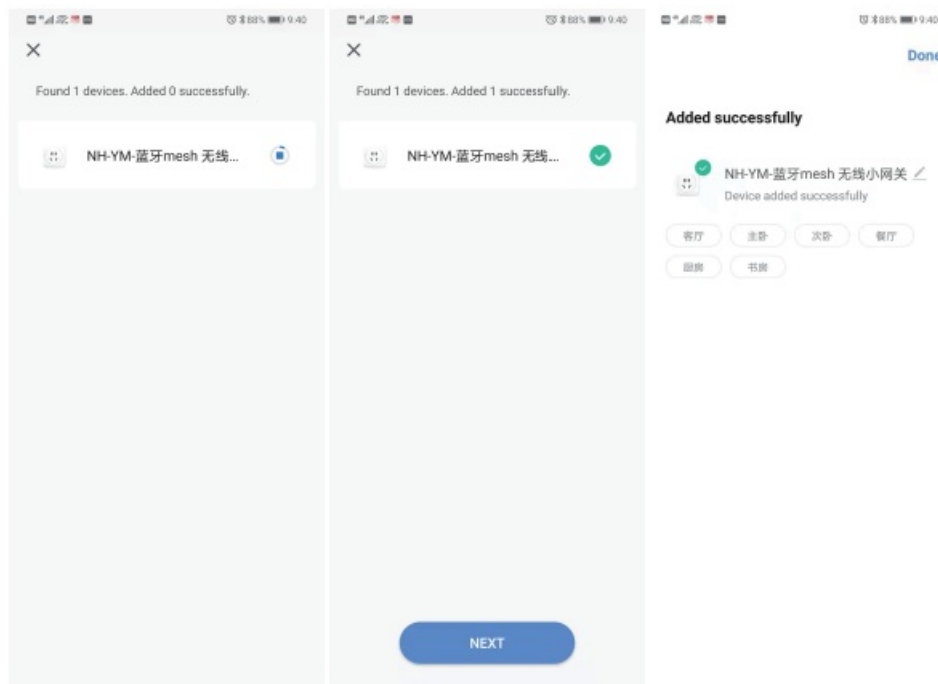
**Reset method:** Press and hold the button for 5 seconds and see the blue indicator flashing several times, which means the reset is successful.



- Select 2.4GHz Wi-Fi network and enter password. Please confirm the blue indication is flashing for normal

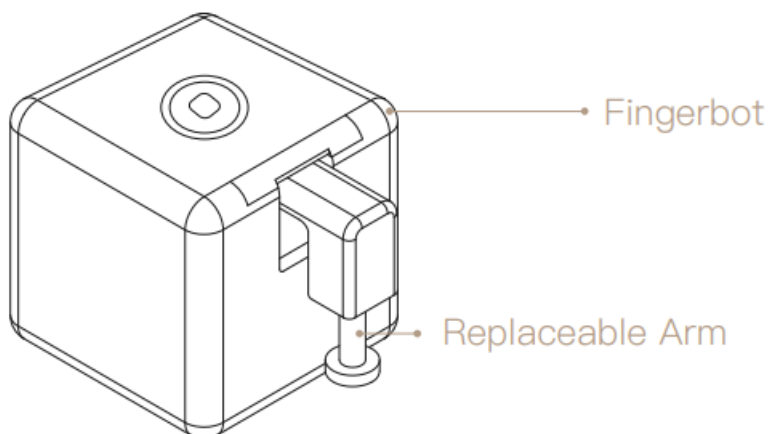
pairing.

- The connection will take about 30-120 seconds, depending on your network condition
- Once the device has been added successfully, you will be able to find the device on “My Home” page.



## Overview

Fingerbot is the world's smallest robot for smartly controlling different types of buttons and switches. It can control your existing home appliances with robotic clicks. Switch lights via App, schedule a morning coffee, activate your vacuum cleaner with voice command, and remotely power on your office PC. Now all these become effortless with Fingerbot.



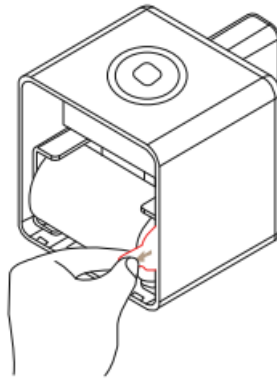
## App Installation

To install the App, search “Smart Life” in the mobile application store. (You can also use “Tuya Smart” App for the same functions and experience)



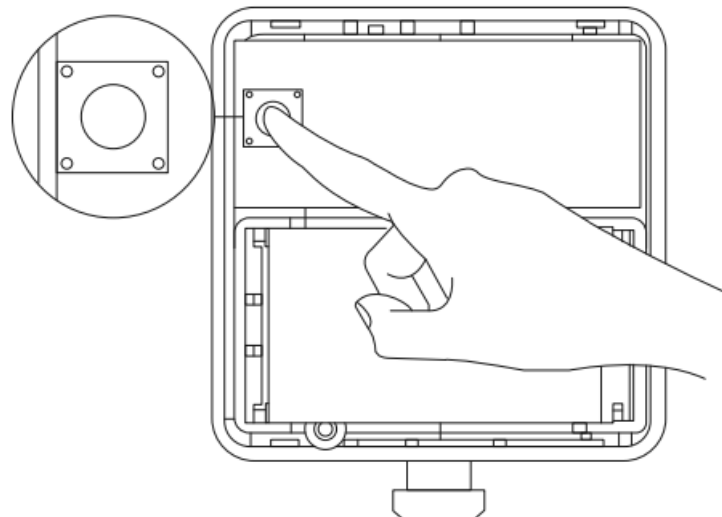
## Device Power

- To power on the device, please open the case from behind and remove the battery insulation sheet before use.
- 



## Device Resetting

- When pairing your Fingerbot to a new account, a device reset is needed. Please long-press the reset button for 5 seconds to reset the device.



## Device Pairing

- **Method one:** Scan the QR code to configure the network guide.



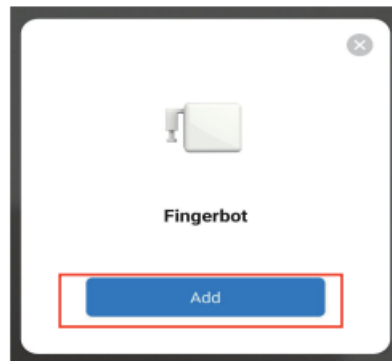
(1)



(2)



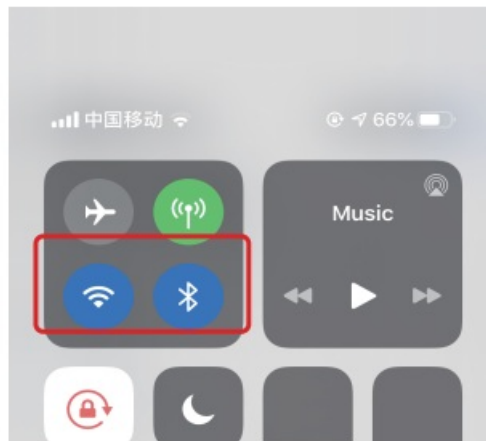
Scan the QR code



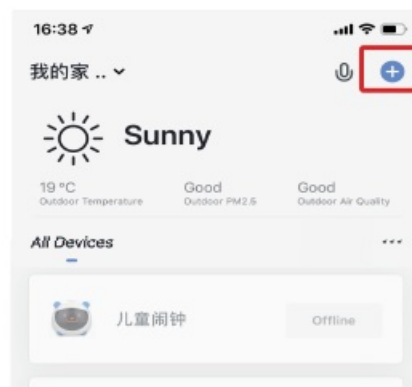
Please connect the device according to the configuration process.

#### • Method two:

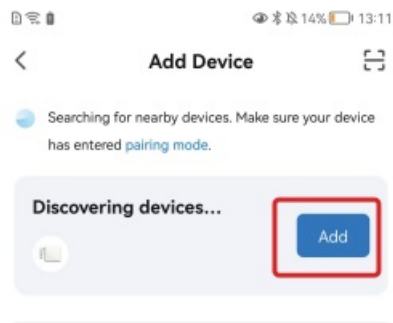
- Make sure the device has been reset.



- Make sure your phone is connected to Wi-Fi and Bluetooth.

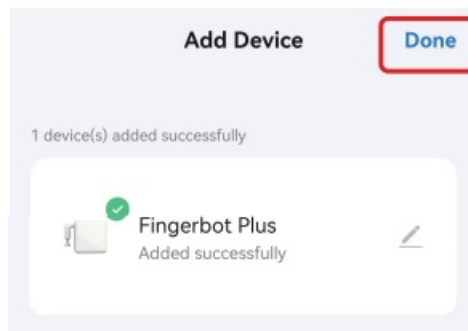


- Open Smart Life/Tuya App and Click "+", then the prompt page will automatically show on the screen. Click "Go to add".

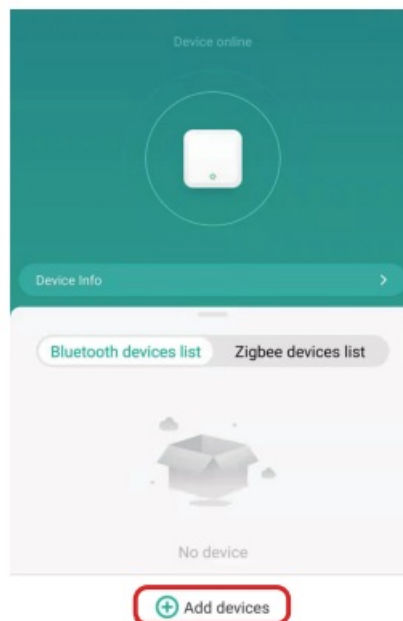


#### Add Manually

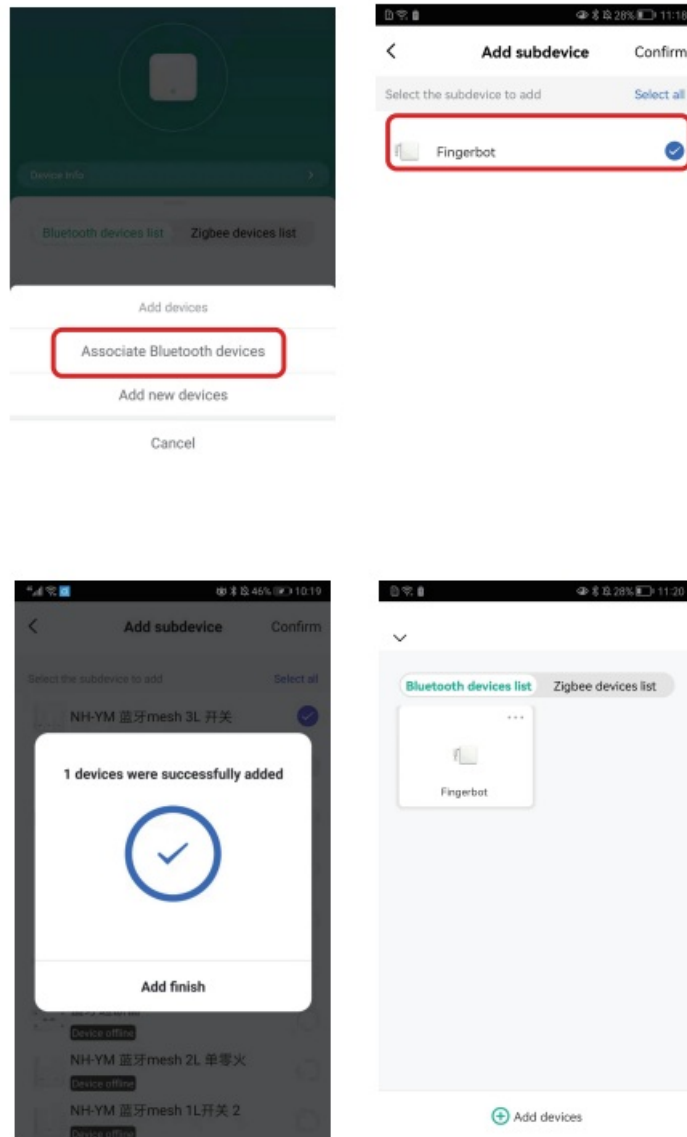
- Add the device successfully, you can edit the name of the device to enter the device page by click “Done”.



- Open the Bluetooth gateway, click “Add devices”, click “Associate Bluetooth devices”, select the device, and click “Add finish”.







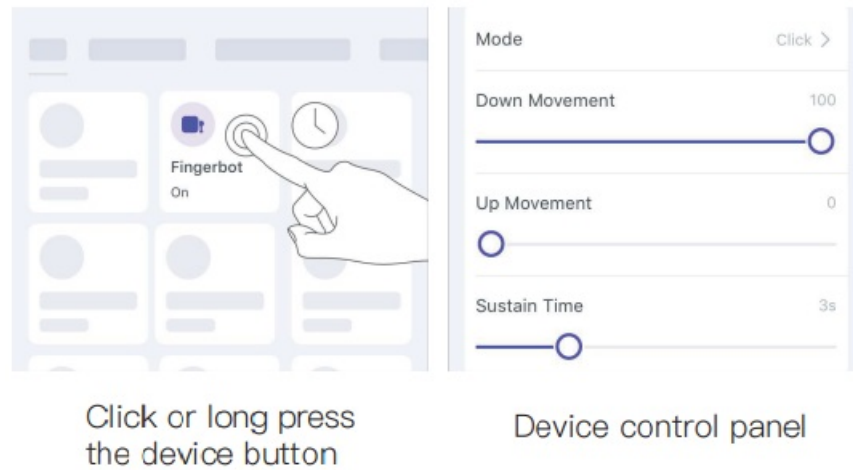
## Device Control

- **Switching**

After the device is connected successfully, click the “Device” tab at the bottom bar. The button representing your Fingerbot will appear in the device collection panel. You can click it to trigger the Fingerbot’s default action.

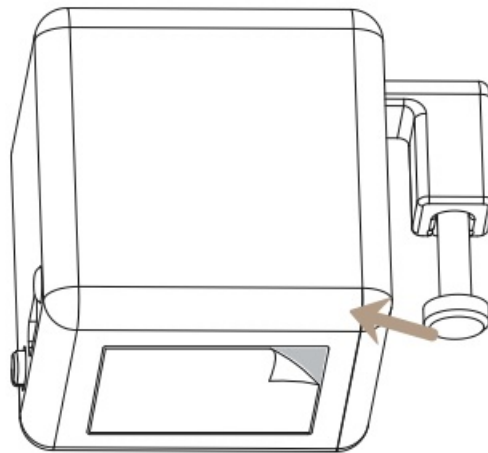
- **Adjusting**

Long press the device button to go to the device control page where there are more adjustment options such as device mode and arm movement settings.



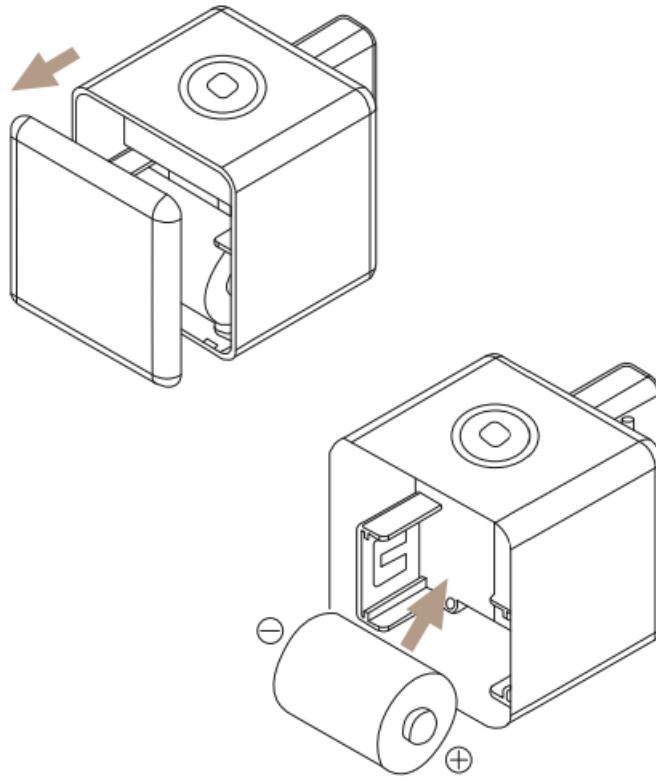
## Device Installation

1. Clean the surface of the button panel where you want to install the Fingerbot.
2. Attach the Fingerbot to the panel using a double-sided tape provided in the Fingerbot package.
3. Connect your Fingerbot with the App and calibrate the movement of the Fingerbot's robotic arm to fit the button. The "Down Movement" parameter should be set to the value at which the Fingerbot's arm can just press the button. (Note: Improper movement settings may bring additional resistance and reduce the life of your Fingerbot.)
4. After installation, we recommend resting the device for 24 hours to reach maximum adhesion.



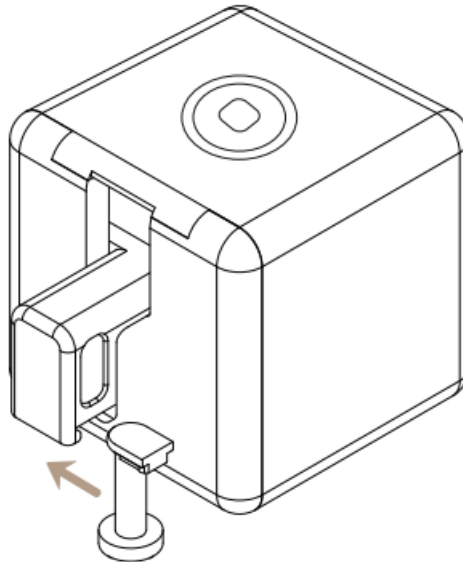
## Battery Change

- TFingerbot works with a replaceable CR2 battery. If its arm does not move as expected, please replace the battery.
- To replace the old battery, please open the case from behind and make sure the new one is installed in the right direction.



## Robotic Arm Extension

With the modular design, the Fingerbot's arm is replaceable in order to meet different needs in diverse situations. We designed three types of Fingerbot arms and included them in the Fingerbot ToolPack (which needs to be purchased separately). Also, we provide free 3D-printing templates for you to design customized Fingerbot arms. Visit [www.adaprox.io](http://www.adaprox.io) to download the digital files.



## Specifications

### Physical features

- Dimensions 34.5\*34.5\*34.5mm
- Weight 38g
- Wireless protocol Bluetooth Low Power 4.2
- Battery type CR2

- Stall torque 2.0 kgf·cm
- Maximum arm movement 12 mm
- Working temperature -10°C ~ 45°C

## SERVICE

1. During the free warranty period, if the product breaks down during normal use, we will offer free maintenance for the product.
2. Natural disasters/man-made equipment failures, disassembly and repair without the permission of our company, no warranty card, products beyond the free warranty period, etc., are not within the scope of free warranty
3. Any commitment (oral or written) made by the third party (including the dealer/service provider) to the user beyond the warranty scope shall be executed by the third party
4. Please keep this warranty card to ensure your rights
5. Our company may update or change the products without notice. Please refer to the official website.

## RECYCLING INFORMATION

All products marked with the symbol for separate collection of waste electrical and electronic equipment (WEEE Directive 2012/19 / EU) must be disposed of separately from unsorted municipal waste. To protect your health and the environment, this equipment must be disposed of at designated collection points for electrical and electronic equipment designated by the government or local authorities. Correct disposal and recycling will help prevent potential negative consequences for the environment and human health. To find out where these collection points are and how they work, contact the installer or your local authority.

## WARRANTY CARD

### Product Information

Product Name\_\_\_\_\_

Product Type\_\_\_\_\_

Purchase date\_\_\_\_\_

Warranty Period\_\_\_\_\_

Dealer Information\_\_\_\_\_

Customer's Name\_\_\_\_\_

Customer Phone\_\_\_\_\_

Customer Address\_\_\_\_\_

### Maintenance Records

Failure date	Cause Of Issue	Fault Content	Principal

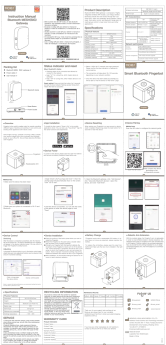
Thank you for your support and purchase at we Moes,we are always here for your complete satisfaction,just feel free to share your great shopping experience with us.



If you have any other need,please do not hesitate to contact us first,we will try to meet your demand.

**WENZHOU NOVA NEW ENERGY CO.,LTD**  
**Address:** Power Science and Technology Innovation  
Center, NO.238, Wei 11 Road, Yueqing Economic  
Development Zone,Yueqing, Zhejiang, China  
Tel:+86-577-57186815  
Email: [service@moeshouse.com](mailto:service@moeshouse.com)

**Documents / Resources**

	<p><a href="#">Moer smartcloudraker Bluetooth Mesh Sig Gateway Hub Smart Home Bridge Wireless Remote Controller</a> [pdf] Instruction Manual</p> <p>smartcloudraker, Bluetooth Mesh Sig Gateway Hub Smart Home Bridge Wireless Remote Controller, smartcloudraker Bluetooth Mesh Sig Gateway Hub Smart Home Bridge Wireless Remote Controller, Mesh Sig Gateway Hub Smart Home Bridge Wireless Remote Controller, Gateway Hub Smart Home Bridge Wireless Remote Controller, Home Bridge Wireless Remote Controller, Bridge Wireless Remote Controller, Wireless Remote Controller, Remote Controller, Controller</p>
--	--

**References**

-  [Adaprox](#)
-  [MOES Smart WiFi ZigBee Smart 2/3 Way Switch Socket Thermostat Sensor](#)