



MOEN INS12922 Screen Filter Replacement Installation Guide

[Home](#) » [Moen](#) » MOEN INS12922 Screen Filter Replacement Installation Guide 

Contents

- [1 MOEN INS12922 Screen Filter Replacement](#)
- [2 REPLACING THE SCREEN FILTER](#)
- [3 Moen Parts Service Kits One Year Limited Warranty](#)
- [4 Documents / Resources](#)
 - [4.1 References](#)
- [5 Related Posts](#)

MOEN®

MOEN INS12922 Screen Filter Replacement

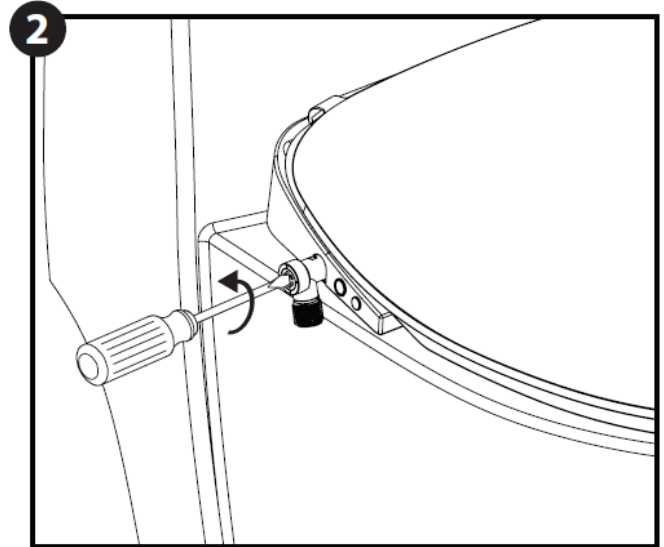
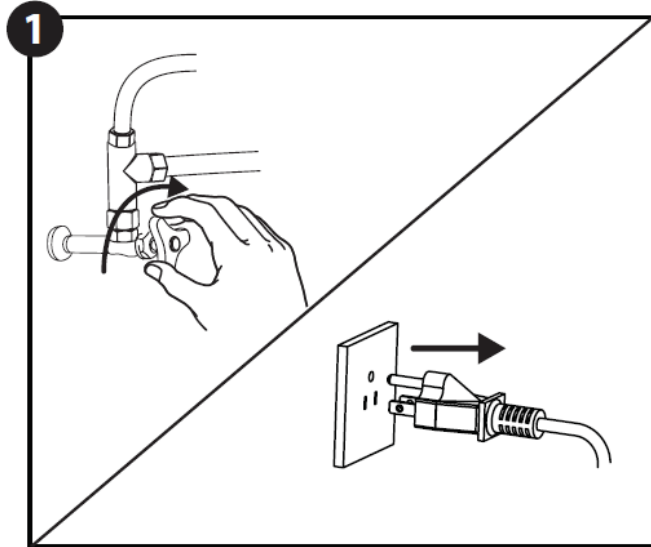


HELPFUL TOOLS

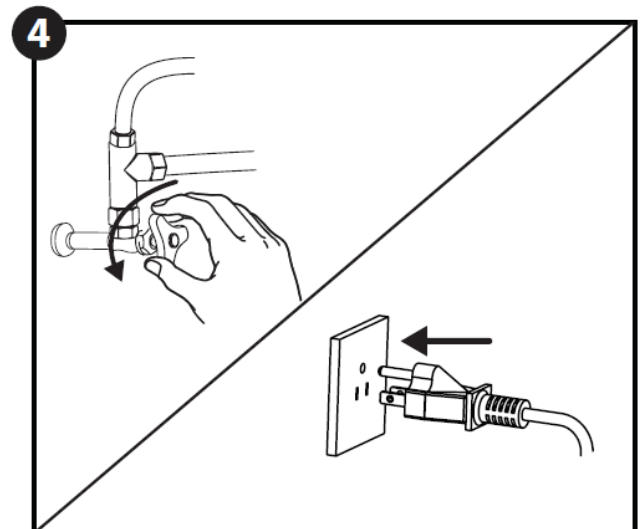
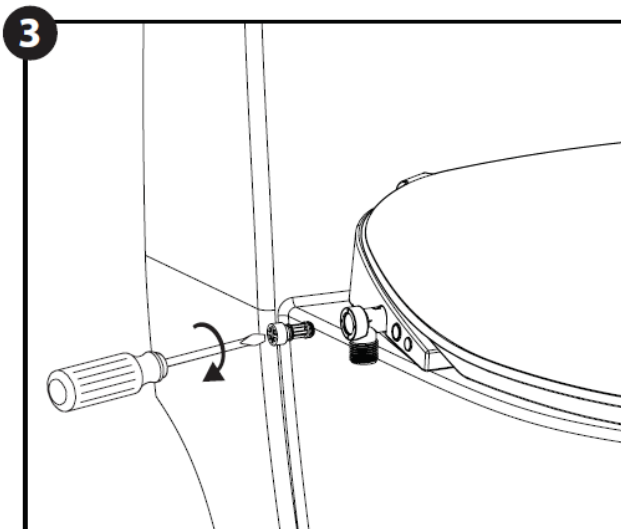
For safety and ease of faucet replacement, Moen recommends the use of these helpful tools.

Thank you for purchasing our product. Please read this installation guide before installation and use to ensure that your product will function at peak performance.

REPLACING THE SCREEN FILTER



- Turn off the water supply source and unplug the power cord.
- Unscrew the filter screen of the four-part inlet nozzle with a screwdriver.
- Install and tighten the new quartile screen with a screwdriver.



- Plug in the power cord and turn on the water supply source at the valve.

Moen Parts Service Kits One Year Limited Warranty

Moen products have been manufactured under the highest standards of quality and workmanship. Moen warrants to the original consumer purchaser all parts of this product to be free from defects in material and workmanship during normal use, for (1) year from date of purchase. A replacement for any defective part will be supplied free of charge for installation by you. Defects or damage caused by the use of other than genuine Moen parts are not covered by this warranty. This warranty shall be effective from the date of purchase as shown on the purchaser's receipt. Some states do not allow limitations on how long an implied warranty lasts, so the above limitation may not apply to you.

This warranty is valid for the original purchaser only and excludes product damage due to installation error, product abuse, or product misuse, whether performed by a contractor, service company, or yourself. Moen will not

be responsible for labor charges, and/or damage incurred in installation, repair or replacement, nor for incidental or consequential damages.

Some states, provinces and nations do not allow the exclusion or limitation of incidental or consequential damages so the above limitations or exclusions may not apply to you. This warranty gives you specific legal rights and you may also have other rights which may vary from state to state, province to province, and nation to nation. Moen Incorporated will advise you of the procedure to follow in making warranty claims. Simply write to Moen explaining the defect and include proof of purchase and your name, address and telephone number.

The address is: Moen Incorporated, 25300 Al Moen Drive, North Olmsted, OH 44070-8022, or call our toll-free consumer

Helpline: 1-800-289-6636. In Canada, write to Moen, 2816 Bristol Circle, Oakville, Ontario L6H5S7 or call:

Toronto: 905-829-3400;

Rest of Canada: 1-800-465-6130, and ask for Product Service.

Moen Incorporated 25300 Al Moen Drive North Olmsted, Ohio 44070-8022 U.S.A.

PLEASE CONTACT MOEN FIRST


ADDRESS: For Installation Help, Missing or Replacement Parts (USA) 1-800-BUY-MOEN (1-800-289-6636)
WWW.MOEN.COM

(Canada)

1-800-465-6130

www.moen.ca

Documents / Resources

	<p>MOEN INS12922 Screen Filter Replacement [pdf] Installation Guide INS12922 Screen Filter Replacement, INS12922, Screen Filter Replacement, Filter Replacement</p>
---	---

References

- [M MOEN | Bathroom & Kitchen Faucets](#)
- [M MOEN | Bathroom & Kitchen Faucets](#)
- [M Moen|Llaves para baÑo y cocina, cabezales, accesorios y mÃ¡s](#)