



MOEN INS11088A Filtering Single Handle Pulldown Kitchen Faucet Installation Guide

[Home](#) » [Moen](#) » MOEN INS11088A Filtering Single Handle Pulldown Kitchen Faucet Installation Guide 

Contents

- [1 MOEN INS11088A Filtering Single Handle Pulldown Kitchen Faucet](#)
- [2 Product Information](#)
- [3 Product Usage Instructions](#)
- [4 INSTALLATION GUIDE](#)
- [5 Parts List](#)
- [6 Spray wand operation features](#)
- [7 Low flow optional steps](#)
- [8 Cleaning Instructions](#)
- [9 Moen Limited Lifetime Warranty](#)
- [10 Documents / Resources](#)
 - [10.1 References](#)
- [11 Related Posts](#)

MOEN®

MOEN INS11088A Filtering Single Handle Pulldown Kitchen Faucet



Product Information

The product is a faucet replacement kit manufactured by Moen. It is designed to provide safety and ease of faucet replacement. The kit includes various parts such as the faucet body, gasket, mounting washer, mounting nut, hose guide, spray wand and hose, and other necessary components.

Specifications

- **Brand:** Moen
- **Model:** INS11088A
- **Recommended Tools:** Adjustable Wrench, Phillips Screwdriver, Safety Glasses

Product Usage Instructions

• Section 1: Preparation

Before starting the installation process, make sure to turn off the water supply and relieve water pressure by opening the faucet handle. Ensure complete water shut-off has been accomplished.

• Section 2: Installation

Step 1: Placing the Deck Gasket

1. Place the Deck Gasket (C) onto the base of the Faucet Body (B), aligning ribs on the faucet (if present) to slots on the Deck Gasket (C).
2. Place the assembled parts into the sink hole. **Note:** Install with the handle on the right side only.

Step 2: Installing the Deck Plate

1. Place the Deck Plate Gasket (O*) onto the Deck Plate (N*), and firmly snap the Deck Plate Gasket (O*) onto the Deck Plate (N*).

2. Place the Deck Plate (N* & O*) on the mounting surface and install the Faucet Body (B) in the hole on the sink.

Note: Install with the handle on the right side only. Optional deck plate and gasket are sold separately.

Step 3: Securing the Faucet Body

1. Slide the Mounting Washer (F) up onto the Faucet Body (B) under the sink.
2. Secure the Mounting Washer (F) with the Mounting Nut (G).
3. Tighten the Mounting Nut (G) using the Installation Tool (A). Use a screwdriver through the hole in the Installation Tool (A) to tighten it firmly.

Step 4: Attaching the Hose Guide

1. Thread the Hose Guide (H) onto the end of the shank of the Faucet Body (B).
2. Tighten the Hose Guide (H) by hand.

Step 5: Connecting the Spray Wand and Hose

1. Remove and discard two plastic caps from the end of the Spray Wand Hose (K).
2. Feed the small tube of the Hose (K) through the bottom-most port of the Y-Connector (M) and exit at the top-most port of the Y-Connector (M). Note: The small tube should only protrude past the top of the Y-Connector (M) about 1-2 inches.
3. Continue inserting the Hose (K) into the Y-Connector (M) until the Hose (K) fitting engages with the clip and locks into place.

Note: It will make an audible click when the Hose (K) engages fully. Pull on the Hose (K) lightly to verify it is locked into place.

FAQ

1. Q1: What tools do I need for the installation?

A1: For the installation, you will need an adjustable wrench, a Phillips screwdriver, and safety glasses.

2. Q2: Can I install the faucet with the handle on the left side?

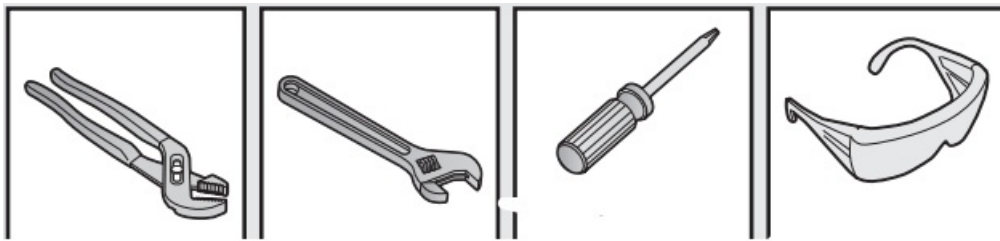
A2: No, the faucet should be installed with the handle on the right side only.

PLEASE CONTACT MOEN FIRST

- For Installation Help, Missing or Replacement Parts
- (USA) 1-800-BUY-MOEN (1-800-289-6636)
 - www.moen.com
- (Canada) 1-800-465-6130
 - www.moen.ca

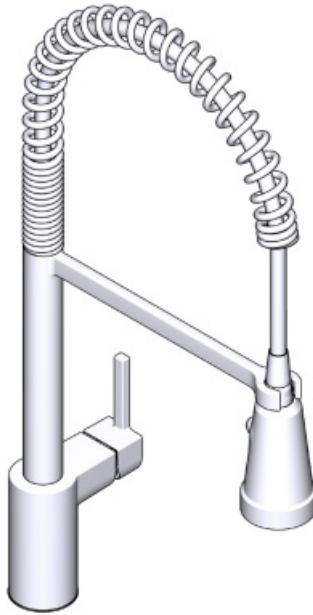
HELPFUL TOOLS

For safety and ease of faucet replacement, Moen recommends the use of these helpful tools.



- Adjustable Pliers
- Adjustable Wrench
- Phillips Screwdriver
- Safety Glasses
- **Minimum and maximum temperature range -Filter waterway:** 40-100°F (5-38°C)
- **Minimum and maximum temperature range -Non-Filter waterway:** 40-160°F (5-71°C)
- **Maximum working pressure:** 125psi (840kPa)

INSTALLATION GUIDE

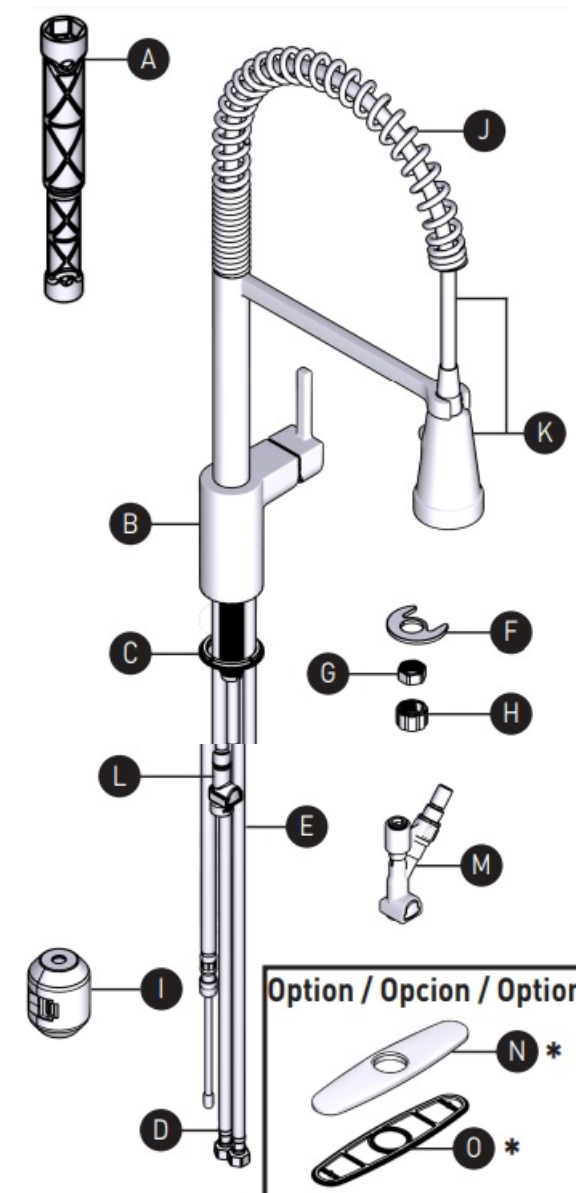


- Image is for reference only (Style varies by model)
- (Save instruction sheet for future reference)
- **Register Online:**
 - www.moen.com/product-registration

Parts List

- A. Installation Tool
- B. Faucet Body
- C. Gasket
- D. Supply Line Hot
- E. Supply Line Cold
- F. Mounting Washer

- G. Mounting Nut
- H. Hose Guide
- I. Hose Weight
- J. Spring
- K. Spray Wand and Hose
- L. Outlet Hose
- M. Y Connector Subassembly
- N. *Deck Plate
- O. *Deck Plate Gasket
- Sold Separately



• **CAUTION — TIPS FOR REMOVAL OF OLD FAUCET:**

Always turn water supply OFF before removing existing faucet or disassembling the valve. Open faucet handle to relieve water pressure and ensure that complete water shut-off has been accomplished.

- System installation must comply with all state and local laws, regulations and plumbing codes.

Icon Legend



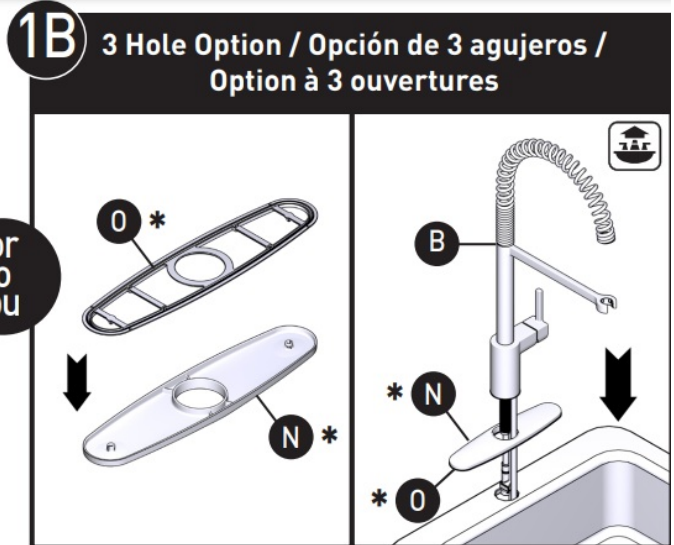
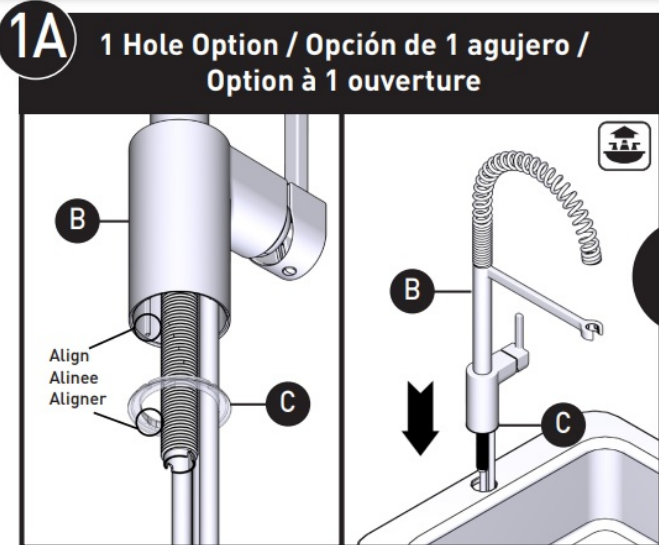
Warning



Above sink



Below sink



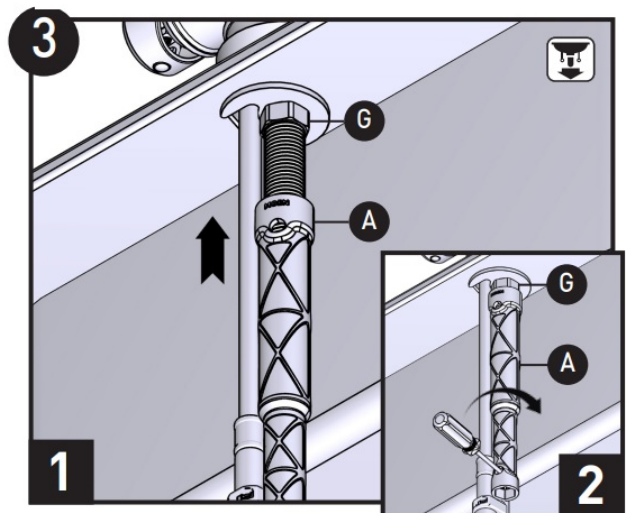
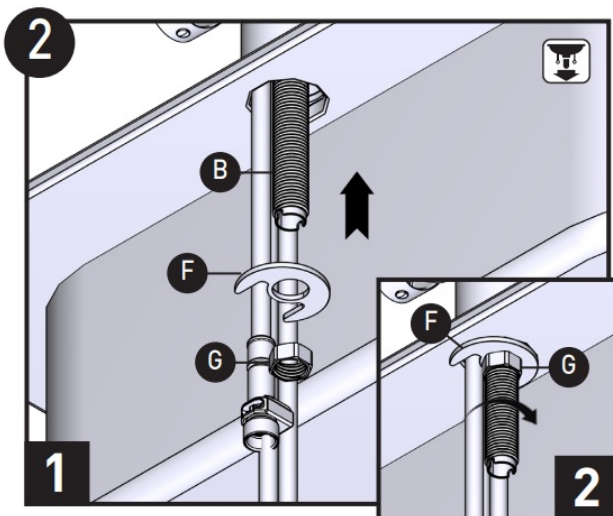
1. Place Deck Gasket (C) onto base of Faucet Body (B) aligning ribs on faucet (if present) to slots on Deck Gasket (C).

Place into sink hole.

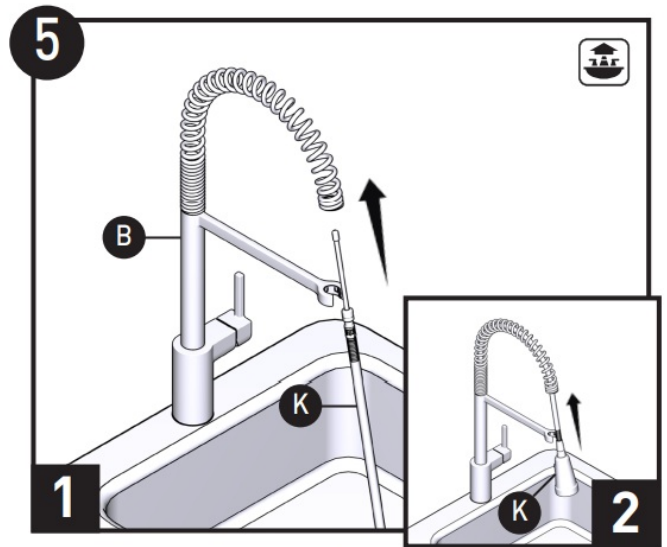
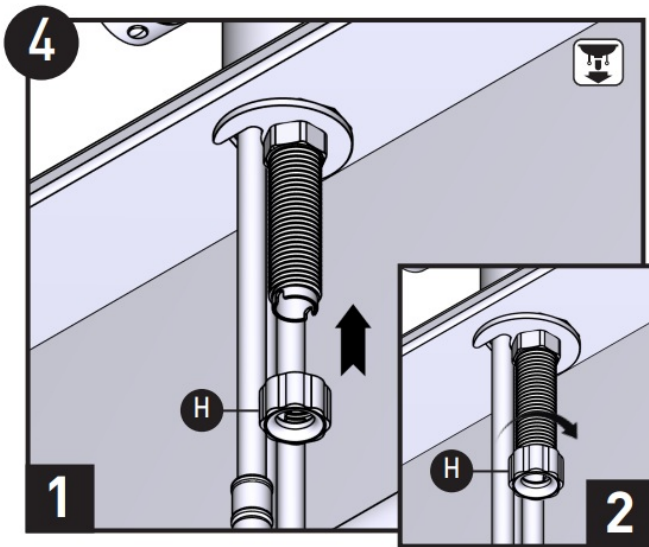
NOTE: Install with handle on right side only.

1. place Deck Plate Gasket (O*) onto Deck Plate (N*), and firmly snap Deck Plate Gasket (O*) onto Deck Plate (N*).
2. Place Deck Plate (N*&O*) on mounting surface and install Faucet Body (B) in hole on sink.

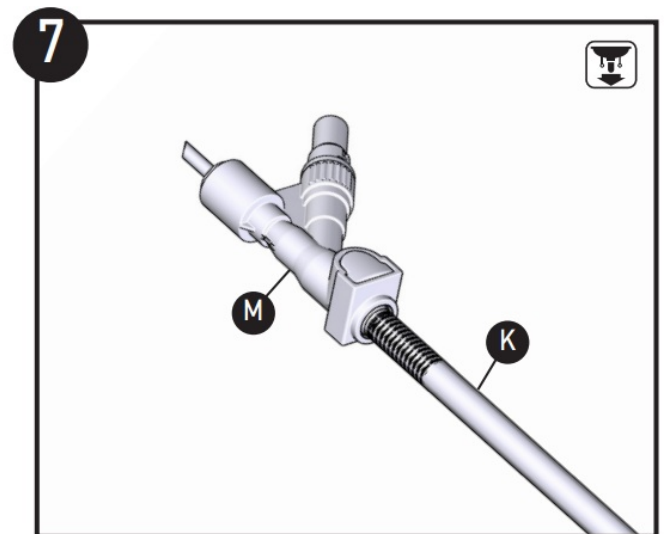
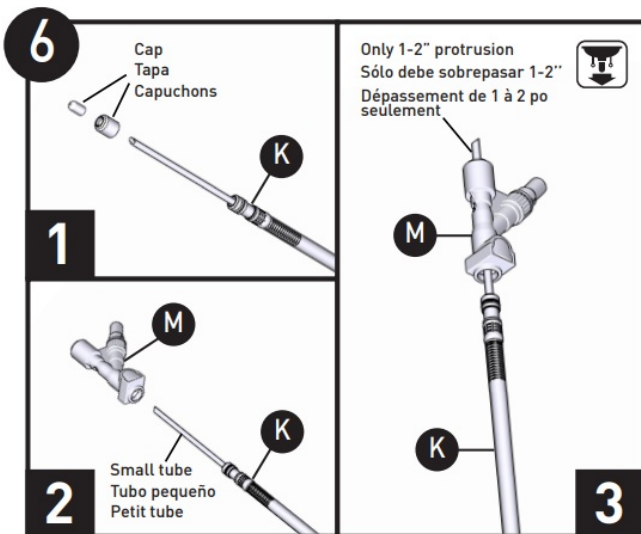
NOTE: Install with handle on right side only. Install optional, sold separately.



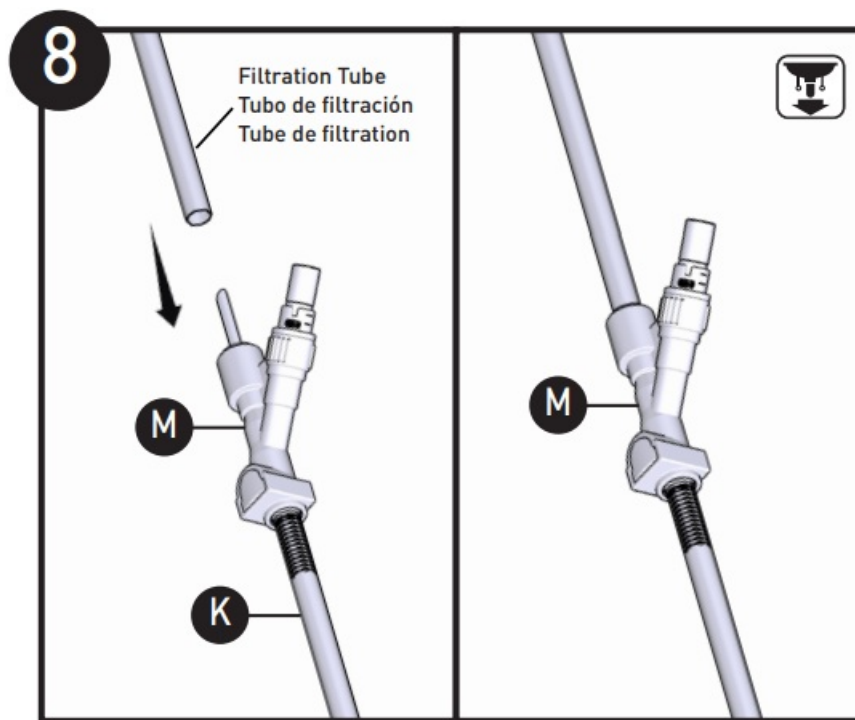
2. Slide Mounting Washer (F) up onto Faucet Body (B) under sink and secure with Mounting Nut (G)
3. Tighten Mounting Nut (G) with Installation Tool (A). Use screwdriver through hole in Installation Tool (A) to tighten firmly.



4. Thread the Hose Guide (H) on to the end of the shank as shown. Tighten by hand
5. Insert small end of Spray Wand and Hose (K) into spout and feed through Faucet Body (B).

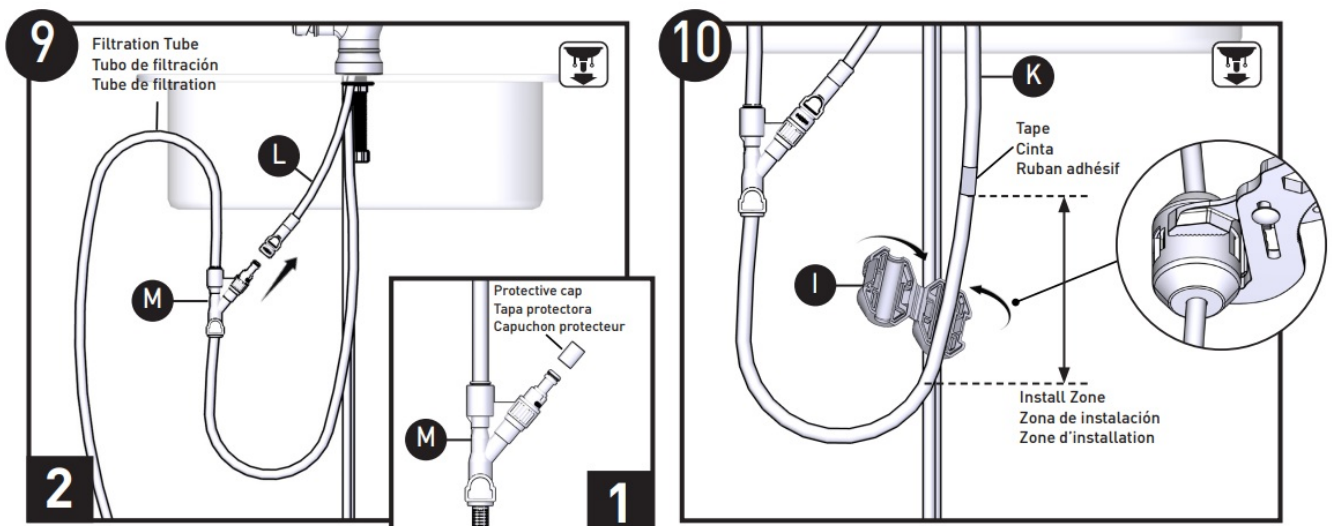


6. Remove and discard two plastic caps from end of Spray Wand Hose (K).
Feed the small tube of Hose (K) through the bottom most port of the Y-Connector (M) and exit at the top-most port of the Y-Connector (M).
NOTE: The small tube should only protrude past top of Y-Connector (M) about 1-2".
7. Continue inserting the Hose (K) into the Y-Connector (M) until the Hose (K) fitting engages with the clip and locks into place. NOTE: It will make an audible click when the Hose (K) engages fully . Pull on the Hose (K) lightly to verify it is locked into place.

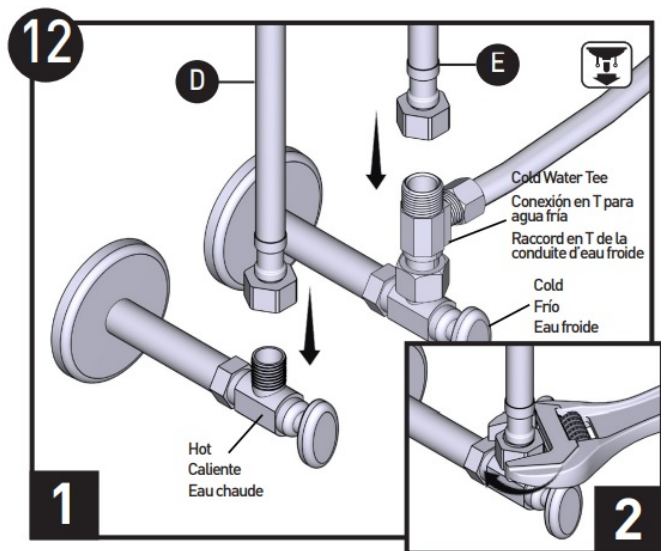
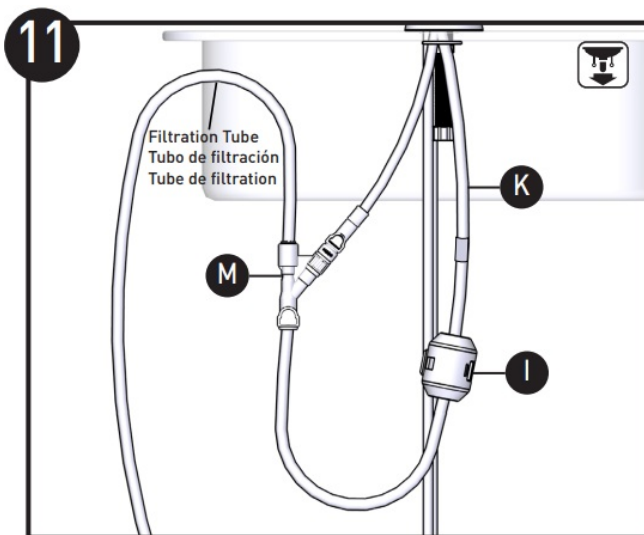


NOTE: Before installing any tubing on this system, ensure that there are no scratches, gouges, or other forms of damage on the outer surface of the tube. If cutting of tubes is required per appropriate filter system instructions, ensure that ends are cut square and are free of burrs on the inside and outside of tubing. Failure to follow these instructions may cause leakage at tube connections.

8. Insert the filtration tube from the filtration system into the the top-most port of the Y-Connector (M) until it bottoms out. It is acceptable for the filtration tube and the small tube of Hose (K) to overlap. **NOTE:** The faucet does not have a filtration function, you need to install a filtration system (a F9800 or F9900) in advance.



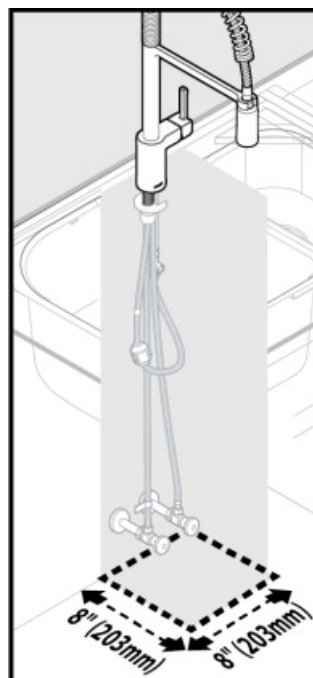
9. Remove the protective cap of the Y-Connector (M). And then insert the branch port of the Y-Connector (M) into the quick connect of Outlet Hose (L) until it locks into place. **NOTE:** It will make an audible click when it engages fully.
10. **IMPORTANT-** Install Hose Weight (I) between the start of the loop curvature and the tape of Pullout Hose (K). Channel Locks may be useful to securely clamp Hose Weight (I)



11. Orient the filtration tube to be in a direction where it does not come in contact with the Hose Weight (I) during operation. NOTE: Pull the Spray Wand (K) down and rotate around a couple times to verify that the Y-Connector (M) is out of the Hose Weight (I) travel path.
12. Attach Supply Line Hot (D) to the hot shutoff valves and attach Supply Line Cold (E) to the cold water tee of cold shutoff valves. Tighten with wrench until secure.
 1. (E) to the cold water tee of cold shutoff valves. Tighten with wrench until secure.
 2. Turn the water supply line valves on and check for leaks.
 3. Let water run for 10 minutes for flushing of any debris.

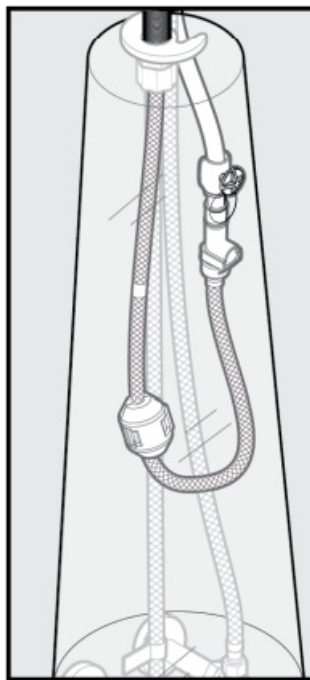
IMPORTANT FOR INSTALLATION

ATTENTION



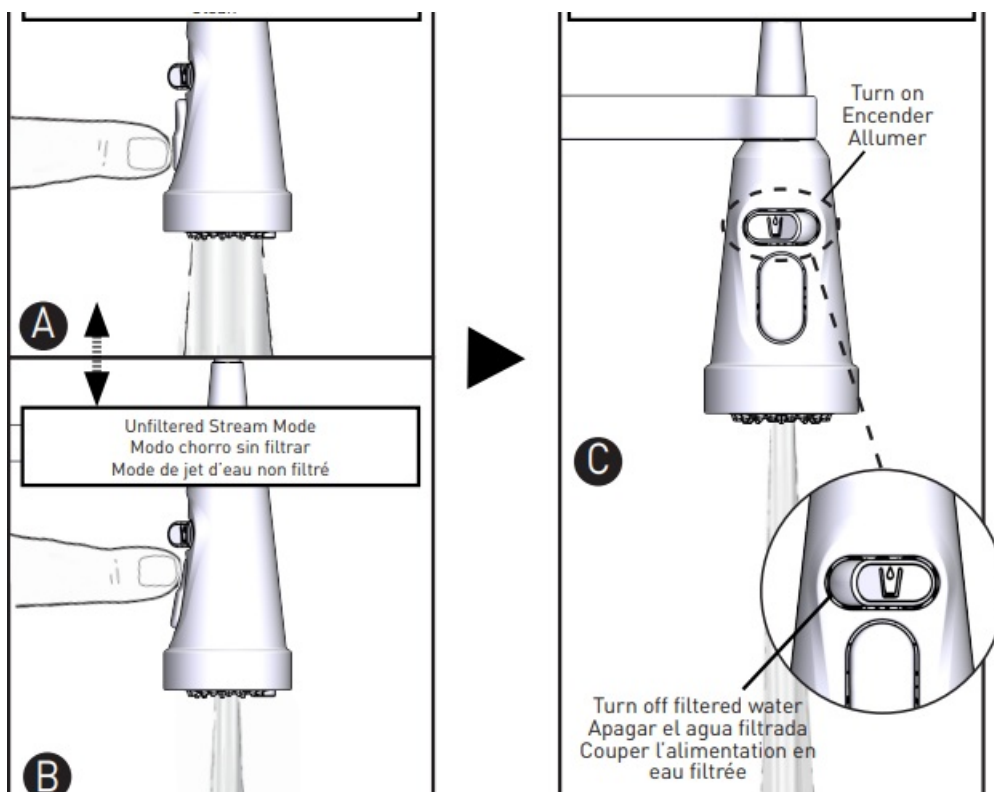
For the best performance of your new pullout faucet, Moen recommends the following:

- Maintain 8" x 8" clear area for the hose and weight to travel, free of any moveable items including bottles, cleaning supplies, etc. See Illustration.
- Periodically check to be sure no obstructions have entered this clear zone, and / hose weight slides freely.

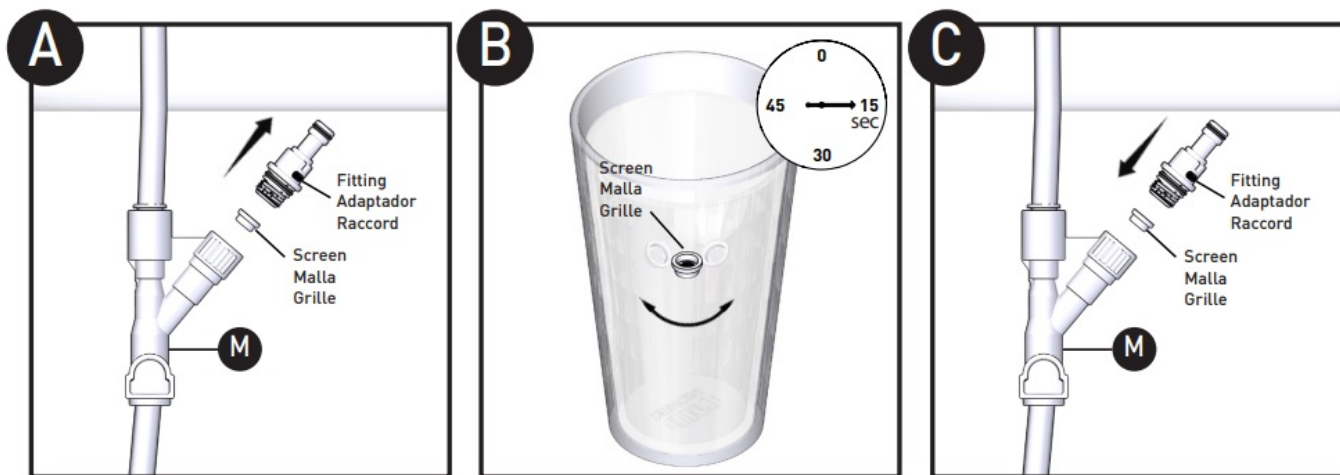


- To enhance the performance of your pulldown or pullout wand, Moen offers the 159060 Hose Guide to isolate the hose from plumbing lines and other items under the kitchen sink. Call our Product Consultants at 800-289-6636 or visit www.moen.com to order part #159060

Spray wand operation features



Low flow optional steps



NOTE: Screen of Y-Connector (M) can be removed for further cleaning. Screen must be reinstalled to maintain product warranty.

1. Use fingers or needle nose pliers to remove fitting first, then insert screen into a cup of water and agitate screen by hand for 15 seconds then drain excess water from screen.
2. Reassemble all the parts into Y-Connector (M).

Cleaning Instructions

• Spot Resist™ Stainless and Spot Resist™ Brushed Nickel Finishes:

- Moen recommends cleaning the Spot Resist finish with a mild soap, rinsing thoroughly with warm water and drying with a clean, soft cloth. Never use cleaners containing abrasives (including abrasive sponges or steel wool), ammonia, bleach or sodium hypochlorite, organic solvents (e.g. alcohols) or other harsh chemicals (e.g. lime scale removers) to clean the Spot Resist finish, as they may damage the finish. Failure to comply with these cleaning instructions may void Moen's warranty



C[®] F5923 (all finishes) is certified by IAPMO R&T to NSF/ANSI 372 for Low Lead Content and NSF/ANSI 42, 58, and CSA 8483.1 for material safety and structural integrity requirements.

Moen Limited Lifetime Warranty

- Moen products have been manufactured under the highest standards of quality and workmanship. Moen warrants to the original consumer purchaser for as long as the original consumer purchaser owns their home (the "Warranty Period" for homeowners), that this product will be leak- and drip-free during normal use and all parts and finishes of this product will be free from defects in material and manufacturing workmanship. All other purchasers (including purchasers for industrial, commercial and business use) are warranted for a period of 5 years from the original date of purchase (the "Warranty Period" for non-homeowners).
- If this product should ever develop a leak or drip during the Warranty Period, Moen will FREE OF CHARGE provide the parts necessary to put the product back in good working condition and will replace FREE OF CHARGE any part or finish that proves defective in material and manufacturing workmanship, under normal installation, use and


service. Replacement parts may be obtained by calling 1-800-289-6636 (Canada 1-800-465-6130), or by writing to the address shown. Proof of purchase (original sales receipt) from the original consumer purchaser must accompany all warranty claims. Defects or damage caused by the use of other than genuine Moen parts is not covered by this warranty. This warranty is applicable only to products purchased after

- December, 1995 and shall be effective from the date of purchase as shown on purchaser's receipt.
- This warranty is extensive in that it covers replacement of all defective parts and finishes. However, damage due to installation error, product abuse, product misuse, or use of cleaners containing abrasives, alcohol or other organic solvents, whether performed by a contractor, service company, or yourself, are excluded from this warranty. Moen will not be responsible for labor charges and/or damage incurred in installation, repair or replacement, nor for any indirect, incidental or consequential damages, losses, injury or costs of any nature relating to this product. Except as provided by law, this warranty is in lieu of and excludes all other warranties, conditions and guarantees, whether expressed or implied, statutory or otherwise, including without restriction those of merchantability or of fitness for use.
- Some states, provinces and nations do not allow the exclusion or limitation of incidental or consequential damages, so the above limitations or exclusions may not apply to you.
- This warranty gives you specific legal rights and you may also have other rights which vary from state to state, province to province, nation to nation. Moen will advise you of the procedure to follow in making warranty claims. Simply write to Moen Incorporated using the address below. Explain the defect and include proof of purchase and your name, address, area code and telephone number.

Moen Incorporated

- 25300 Al Moen Drive
- North Olmsted, Ohio 44070-8022
- U.S.A.
- INS11088A – 11/23
- ©2023 Moen Incorporated

Documents / Resources

	<p>MOEN INS11088A Filtering Single Handle Pulldown Kitchen Faucet [pdf] Installation Guide INS11088A, INS11088A Filtering Single Handle Pulldown Kitchen Faucet, Filtering Single Handle Pulldown Kitchen Faucet, Single Handle Pulldown Kitchen Faucet, Handle Pulldown Kitchen Faucet, Pulldown Kitchen Faucet, Kitchen Faucet, Faucet</p>
---	---

References

- [M MOEN | Bathroom & Kitchen Faucets](#)
- [M MOEN | Bathroom & Kitchen Faucets](#)

- [M Moen Incorporated](#)
- [User Manual](#)

[Manuals+](#), [Privacy Policy](#)