



MOEN GXP50C Garbage Disposal with Power Cord User Manual

[Home](#) » [Moen](#) » MOEN GXP50C Garbage Disposal with Power Cord User Manual

MOEN[®] GARBAGE DISPOSAL User Manual

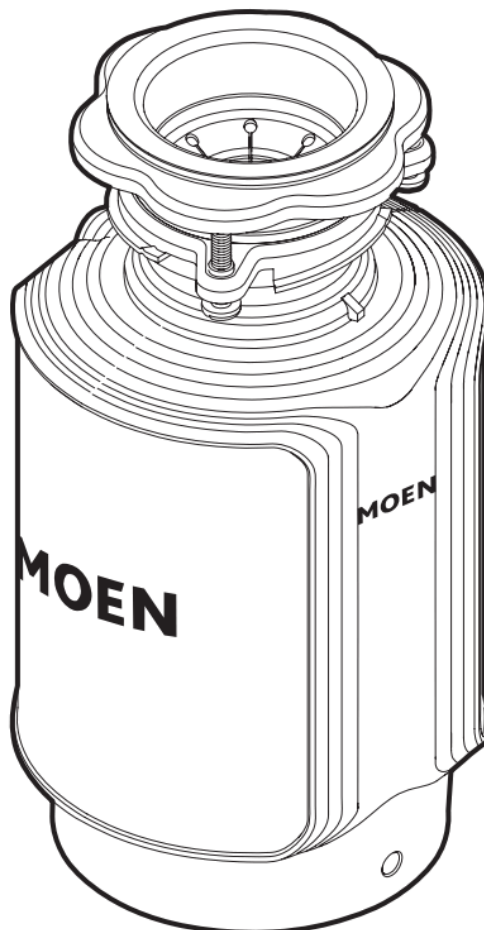


Image is for reference only
(Style varies by model)

Record Purchased Model and Serial Number:

(Save instruction sheet for future reference)

Register Online:

www.moen.com/product-registration

Contents [[hide](#)]

[1 GXP50C Garbage Disposal with Power Cord](#)

[2 Parts List](#)

[3 IMPORTANT SAFETY INSTRUCTIONS](#)

[4 CONNECT DISPOSAL TO MOUNT ASSEMBLY](#)

[5 OPTIONAL STEPS FOR HARDWIRE INSTALLATION](#)

[6 BATCH FEED OPERATING INSTRUCTIONS](#)

[7 ELECTRICAL CONNECTIONS](#)

[8 LIMITED WARRANTY AND IN-HOME SERVICE](#)

[9 WHAT THIS LIMITED WARRANTY DOES NOT COVER:](#)

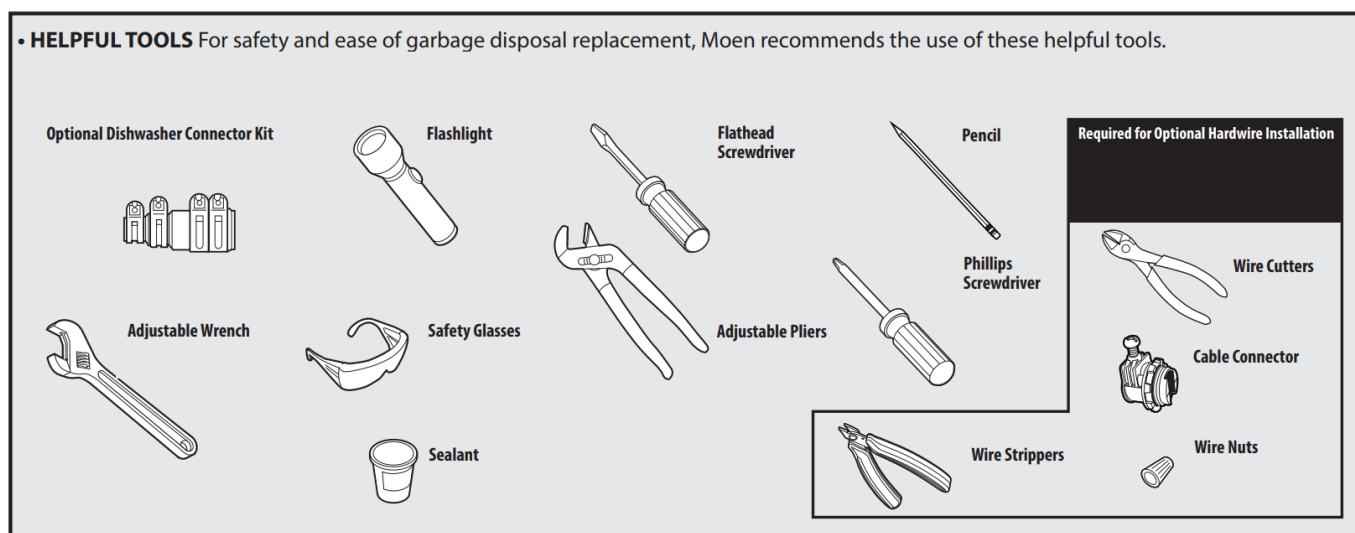
[10 Documents / Resources](#)

[10.1 References](#)

[11 Related Posts](#)

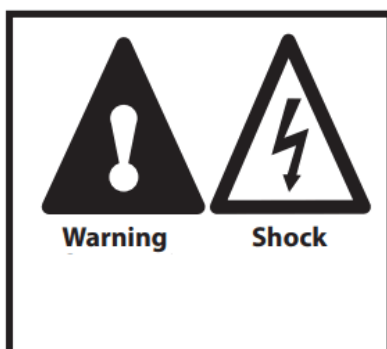
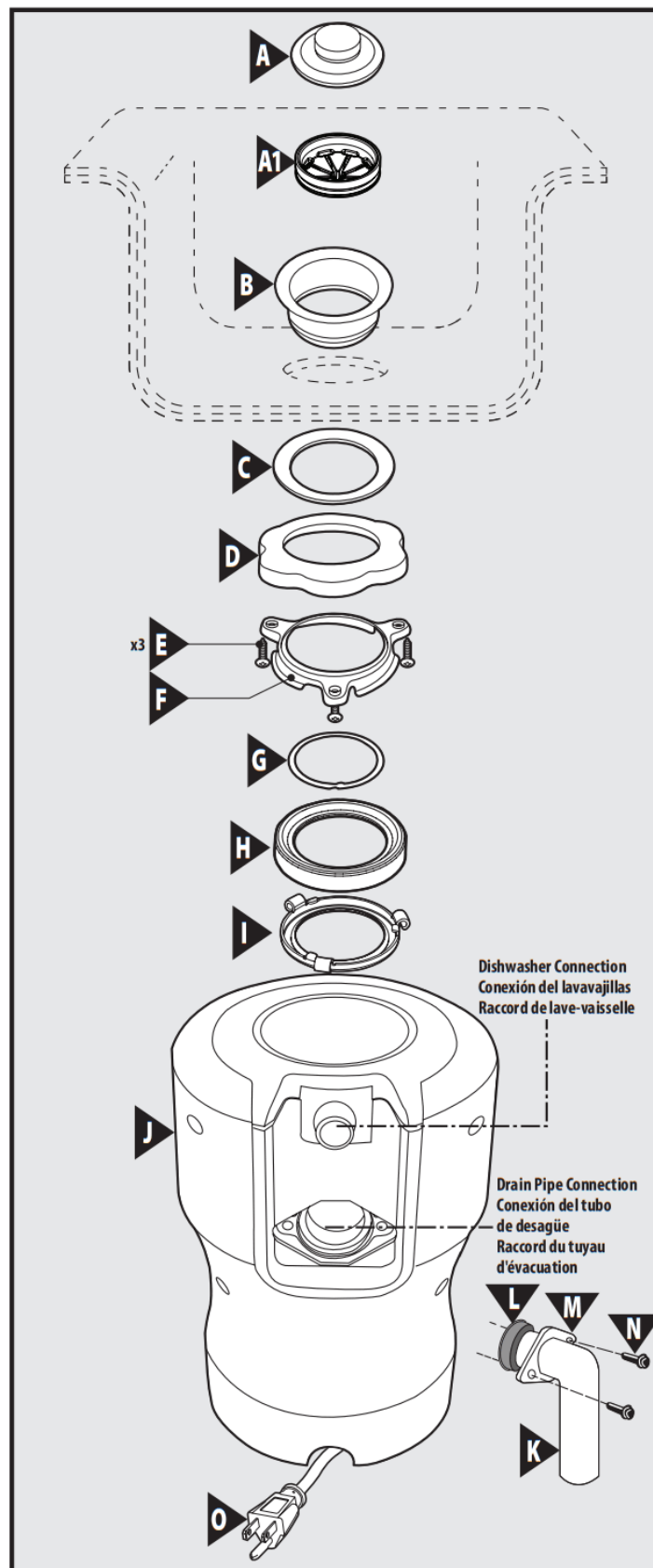
GXP50C Garbage Disposal with Power Cord

• **HELPFUL TOOLS** For safety and ease of garbage disposal replacement, Moen recommends the use of these helpful tools.



Parts List

- A. Stopper
- A1. Removable Splash Guardt
- B. Sink Flange
- C. Fiber Gasket
- D. Backup Flange
- E. Mounting Screws (x3)
- F. Upper Mounting Ring
- G. Snap Ring



Icon Legend



NOTE: This has been designed to operate on 110-120 Volt, 60 Hz exclusively. Using any other voltage or Hz will adversely affect performance.

IMPORTANT: Read all instructions thoroughly. Keep this guide for future reference.

WARNING: Be sure to review SAFETY INSTRUCTIONS PERTAINING TO A RISK OF FIRE, ELECTRICAL SHOCK OR INJURY TO PERSONS before using disposal.

IMPORTANT SAFETY INSTRUCTIONS

INSTRUCTIONS PERTAINING TO A RISK OF FIRE, ELECTRIC SHOCK OR INJURY TO PERSONS. SAVE THESE INSTRUCTIONS.

NOTE: If you are not familiar with electrical power and procedures, call a qualified electrician.

WARNING – Improper connection of the equipment-grounding conductor can result in a risk of electric shock.

Check with a qualified electrician or serviceman if you are in

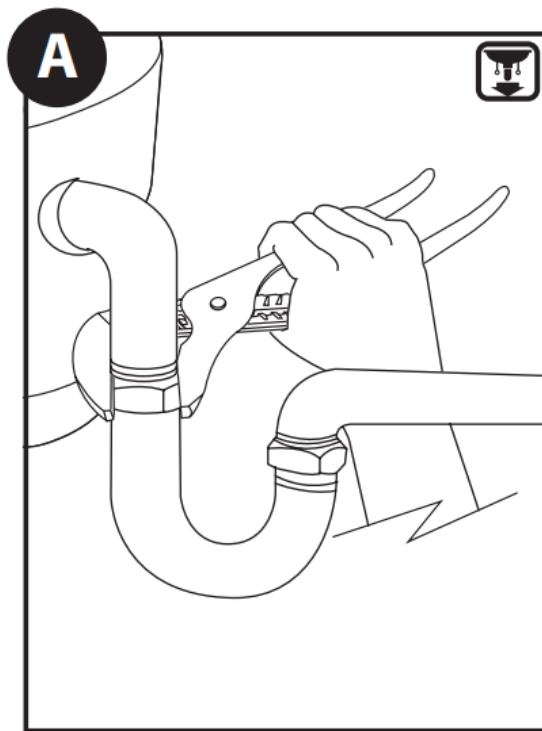
doubt as to whether the appliance is properly grounded. If it will not fit the outlet, have a proper outlet installed by a qualified electrician.

WARNING – When using electrical appliances, basic precautions should always be followed, including the following:

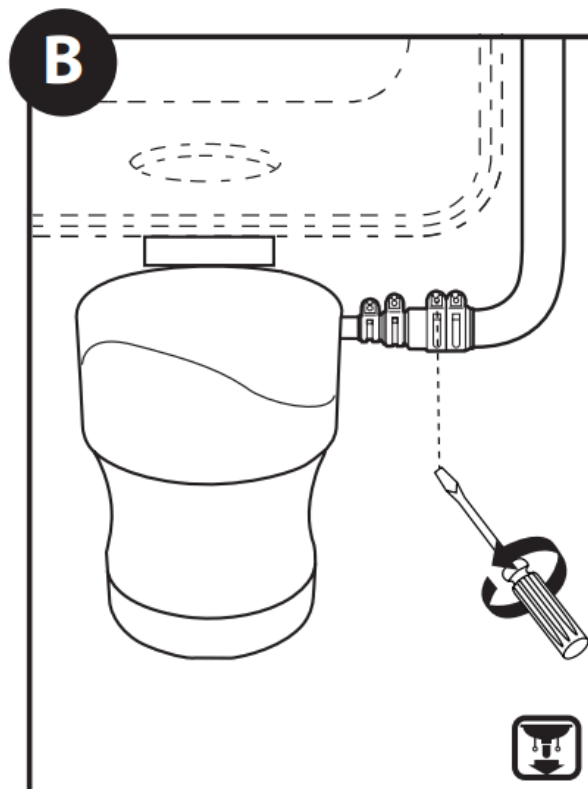
1. Read all instructions before using the appliance.
2. To reduce the risk of injury, close supervision is necessary when an appliance is used when children are nearby.
3. Appliance not intended for use by persons (including children) with reduced physical, sensory or mental capabilities, or lack of experience or knowledge, unless they have been given supervision or instruction concerning use of the appliance by a person responsible for their safety.
4. Do not put fingers or hands into a waste disposal.
5. Unplug the power cord before attempting to clear a jam or remove an object from the disposal.
6. When attempting to loosen a jam in a waste disposal, use a long wooden object such as a wooden spoon.
7. When attempting to remove objects from a waste disposal use long-handled tongs or pliers. If the disposal is magnetically actuated, non-magnetic tools should be used.
8. To reduce the risk of injury by materials that may be expelled by a waste disposal, do not put the following into a disposal: clam or oyster shells; caustic drain cleaners or similar products; glass, china or plastic; large whole bones; metal, such as bottle caps, tin cans, aluminum foil or utensils; hot grease or other hot liquids; whole corn cobs.
9. When not operating a disposal, leave the stopper in place to reduce the risk of objects falling into the disposal.
10. For proper grounding instructions see the ELECTRICAL CONNECTION AND GROUNDING INSTRUCTIONS portion of this manual.

STEPS FOR REMOVAL OF OLD DISPOSAL. FOR NEW DISPOSAL INSTALL, SKIP TO PAGE 5.

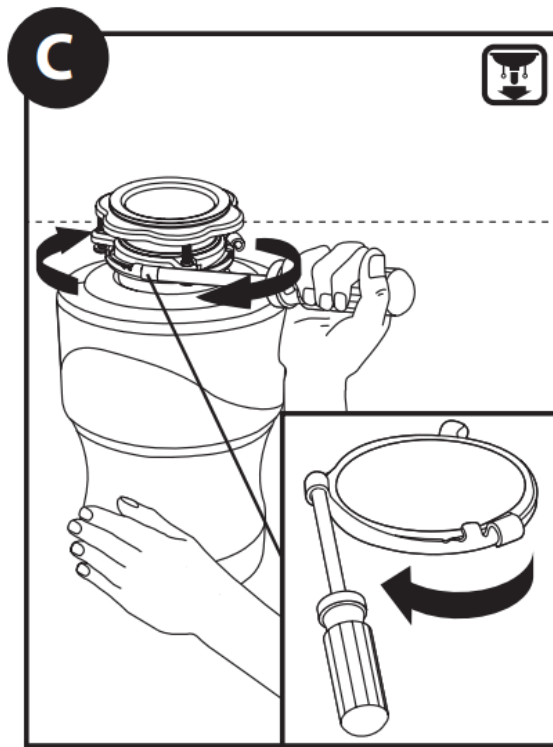
Turn off power if hardwired or unplug if cord is used.



Unplug the disposal or if disposal is hardwired, turn off the electrical power at the circuit breaker or fuse box. Use a wrench to disconnect the drain line where it attaches to the disposal discharge tube.

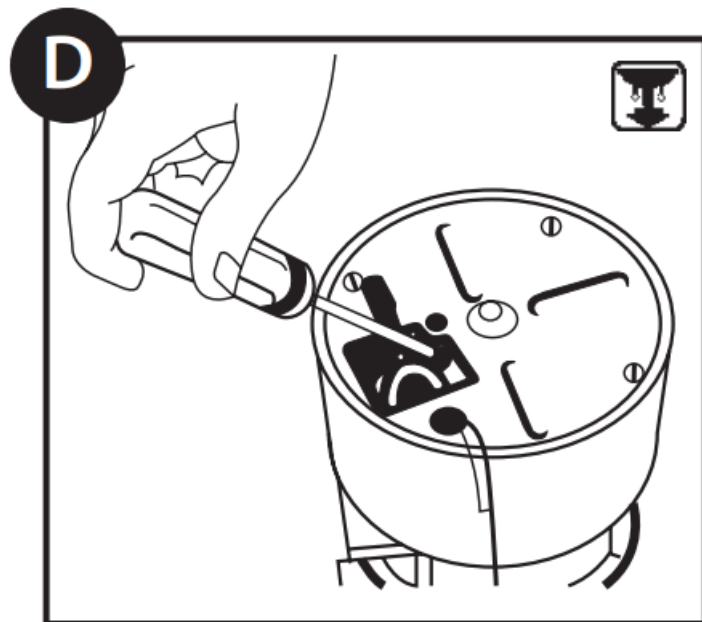


If a dishwasher is installed, make sure the dishwasher is not running. We recommend unplugging the dishwasher or turning off the electrical power at the circuit breaker or fuse box. Remove the dishwasher drain hose from the disposal.



Caution: Be sure to support the disposal while performing this step or it may fall when the lower mounting ring is disconnected from the mounting assembly. Remove disposal from sink flange by turning lower mount ring to the left. If you are unable to turn the mount ring, tap on one of the extensions from the ring with a hammer. Some mounting systems have tubular extensions. Inserting a screwdriver into one tube will provide additional leverage for turning the mount ring. Some disposals may require the removal of a clamp. If your disposal is hardwired (metal shielded cable not utilizing a wall plug), complete step D. If you utilize a plug in cord, go on to step E.

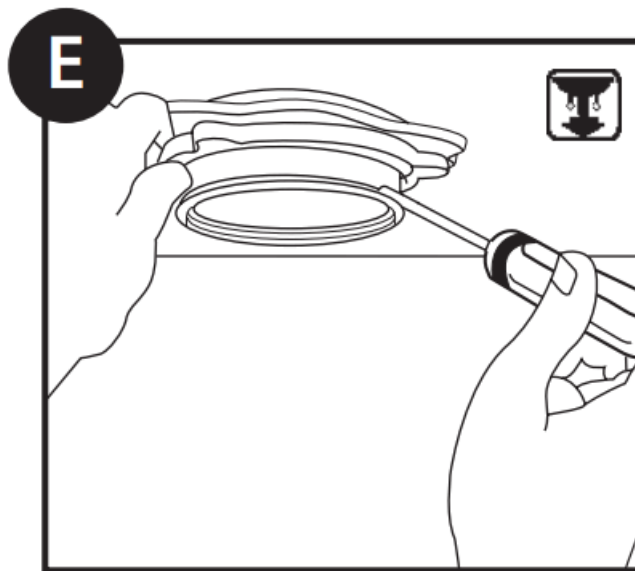
HARDWIRE REMOVAL



Turn off power at circuit breaker or fuse box. When the old disposal is removed from sink flange, disconnect any hardwired connections or unplug unit. Disclaimer: If you are not familiar with electrical power and procedures, call a qualified electrician.

A. When disposer is removed, turn up side down and remove electrical cover plate (see D).

B. Use screwdriver to remove green ground wire. Remove wire nuts from black and white power wires and separate disposer wires from power cable wires. Loosen screws on cable clamp and separate cable from disposer.

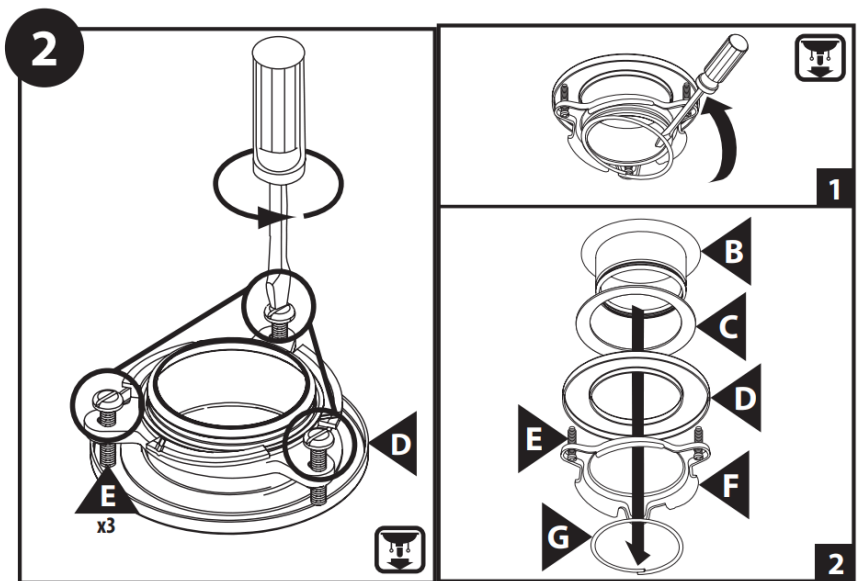
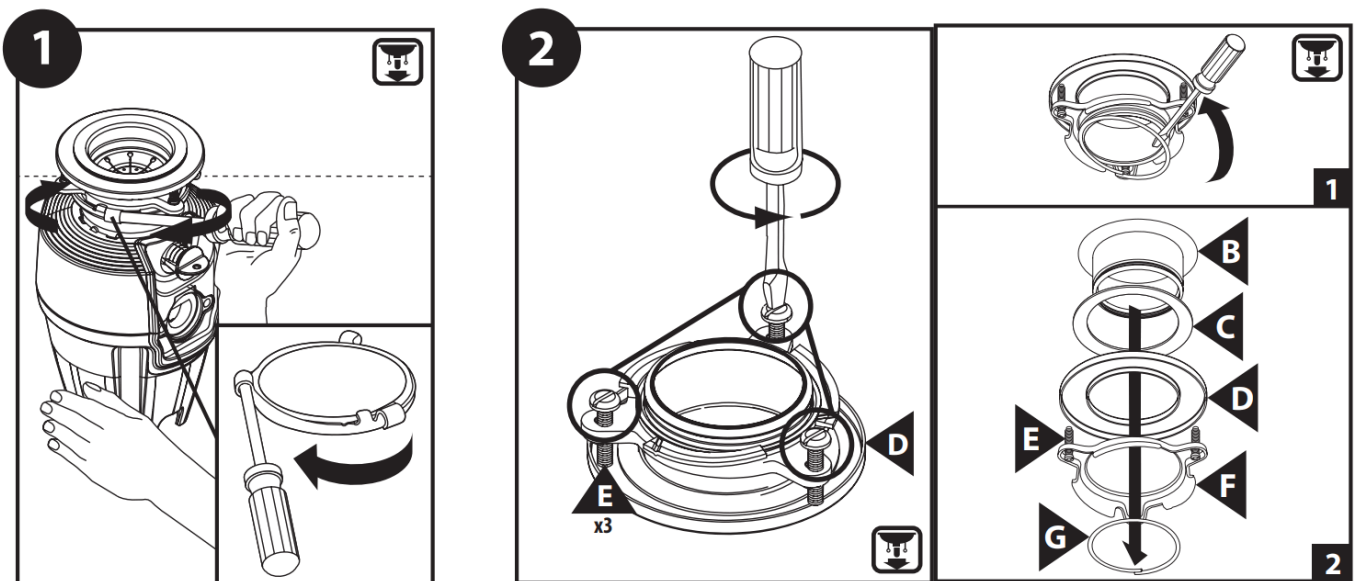


Inspect current mounting ring seals, your new disposal may be compatible with the existing mounting ring and could be reused. If the existing sink flange is to be reused, go to page 7, step 10. If unable to be used, remove the old sink flange from the sink. Clean the sink thoroughly.

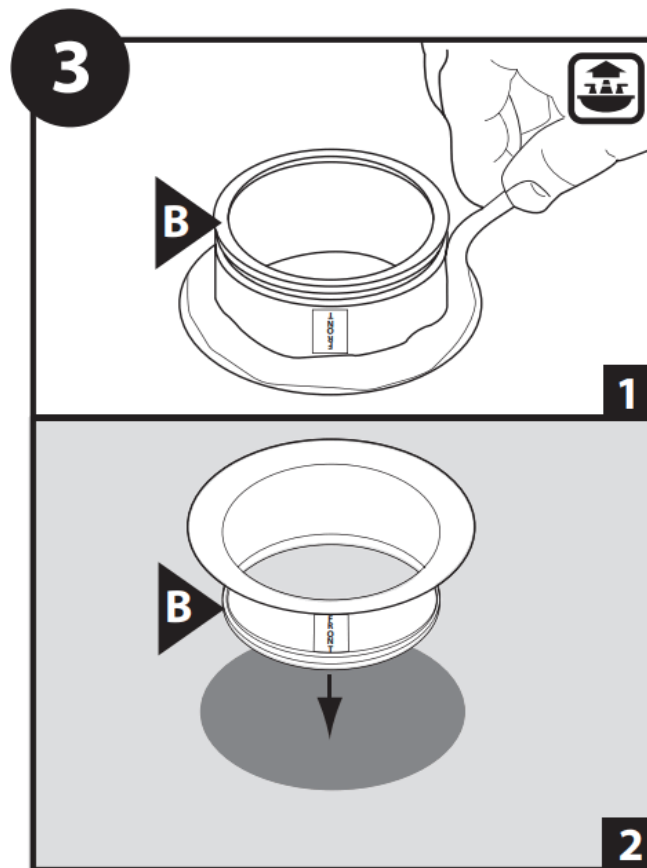
HELPFUL HINT: Unless you have a new home, this is a good time to clean out the trap and drain lines by running a drain auger or plumber's snake before installing your new disposal.

INSTALLATION OF MOUNTING ASSEMBLY READ COMPLETELY BEFORE STARTING.

NOTE: Pay close attention to the order of the mounting assembly parts, as they have been correctly assembled by the factory.

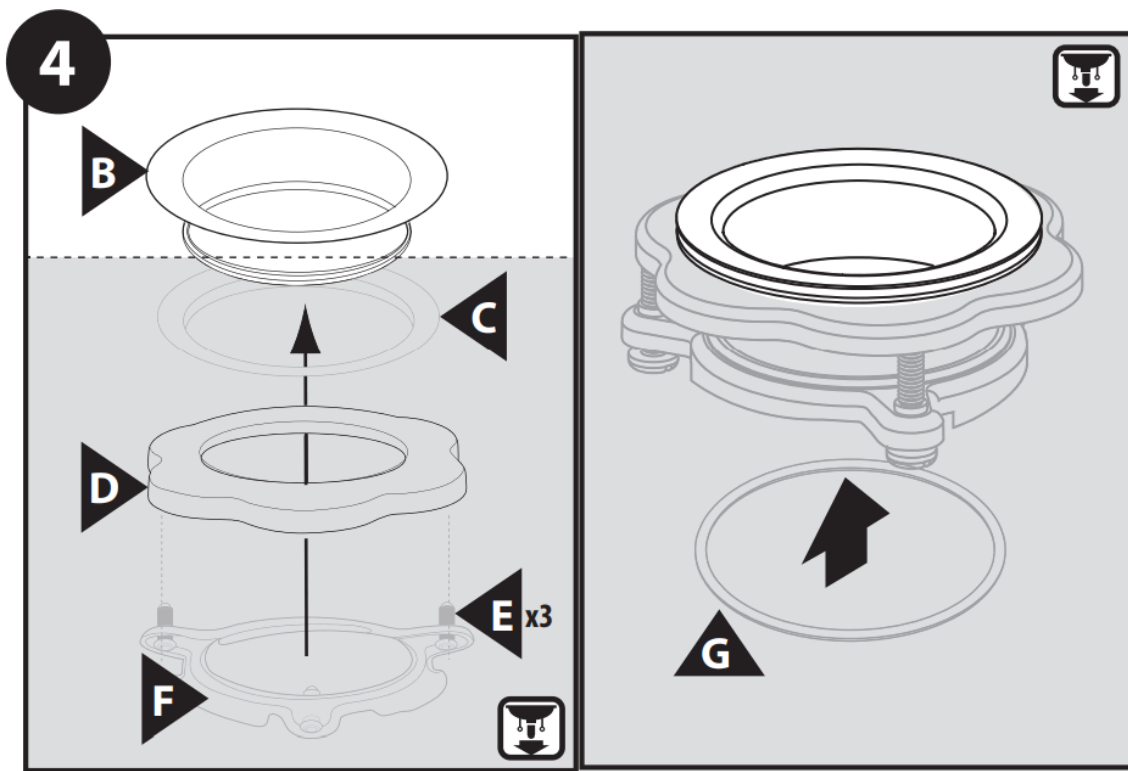


Remove disposal from packaging. Disassemble the mounting assembly from the disposal by turning the lower mount ring until it disengages from the ramps on the upper mounting ring. On the sink flange assembly, loosen the 3 mounting screws (E) until the upper mounting ring can be moved up to the backup flange (D).



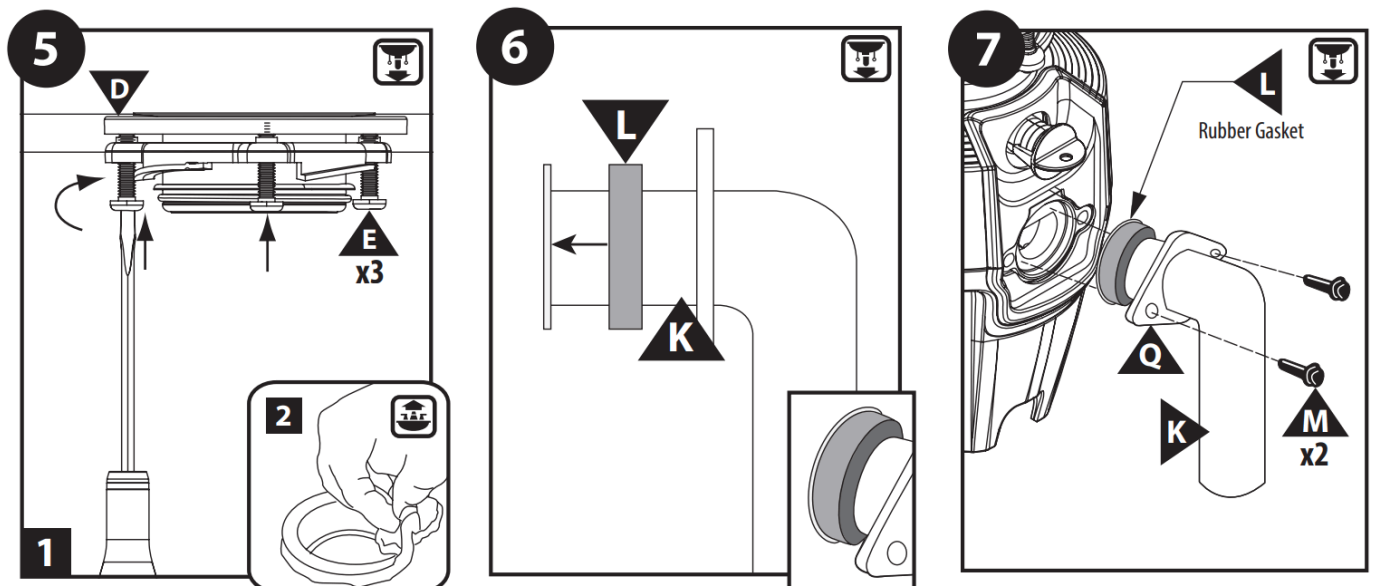
1. Clean the area around the sink drain where the disposal is to be mounted. Evenly apply 2" thick rope of plumber's sealant around Sink Flange (B).
2. Position the Sink Flange (B) in the center of the sink drain opening.
Push the sink flange down firmly to make a good seal. Note: Excess sealant will be squeezed out during step 10 and should not be cleaned up until then. DO NOT move or rotate the sink flange once seated or the seal may be broken. Note: Some sink manufacturers may recommend "Non- Staining" plumber's sealant, check your sink care instructions.

HELPFUL HINT: Using a towel in the sink to prevent scratching, place a weight (or your old garbage disposal) on the sink flange to hold it in place until the sink flange assembly is secured.



Re-assemble the fiber gasket (C), backup flange (D), upper mounting ring (F) and screws (E). From underneath the sink, place the fiber gasket (C), backup flange (D) and then the upper mounting ring (F) onto the flange in this order. Hold the fiber gasket (C), backup flange (D) and upper mounting ring (F) in place while aligning the snap ring (G).

ATTACH DISCHARGE ELBOW TO THE DISPOSAL



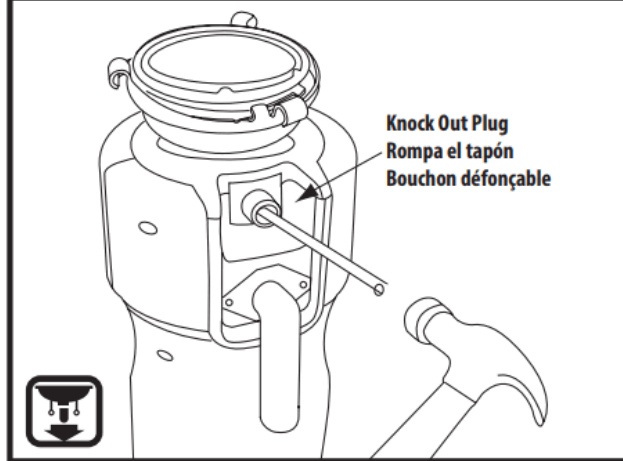
1. Tighten all three 1/2" Screws (E) evenly and firmly against the Backup Flange (D). **DO NOT OVERTIGHTEN!**

Verify preassembled Gasket (L) is flush to flange on Elbow (K).

Install the provided pre-assembled discharge elbow (K)/gasket (L) assembly and elbow flange (Q). Install and tighten two screws (M) x2 evenly with a screw driver. **DO NOT RE-USE THE EXISTING DISCHARGE ELBOW AND GASKET AS THE GASKET MAY NOT SEAL PROPERLY. USE ONLY THE NEW ELBOW, GASKET, FLANGE AND SCREWS PROVIDED. TIGHTEN EVENLY!**

8

***Only perform this step if connecting disposal to dishwasher**

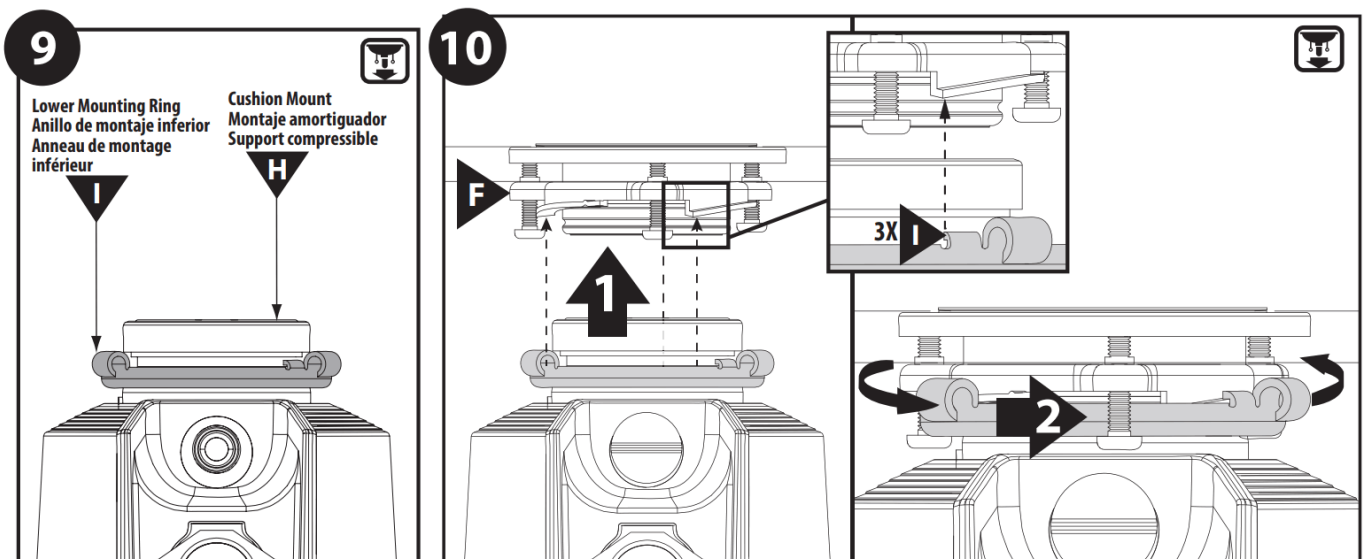


Using a blunt instrument (steel punch or wooden dowel), knock out the entire plug in the dishwasher inlet. Do not use a screwdriver or sharp instrument.

IMPORTANT: Do not remove the gasket and place it on the disposal between the elbow and disposal. It must stay on the elbow to make a proper seal.

When the plug has been knocked into the disposal, it should be removed using a pair of kitchen tongs and thrown away.

CONNECT DISPOSAL TO MOUNT ASSEMBLY



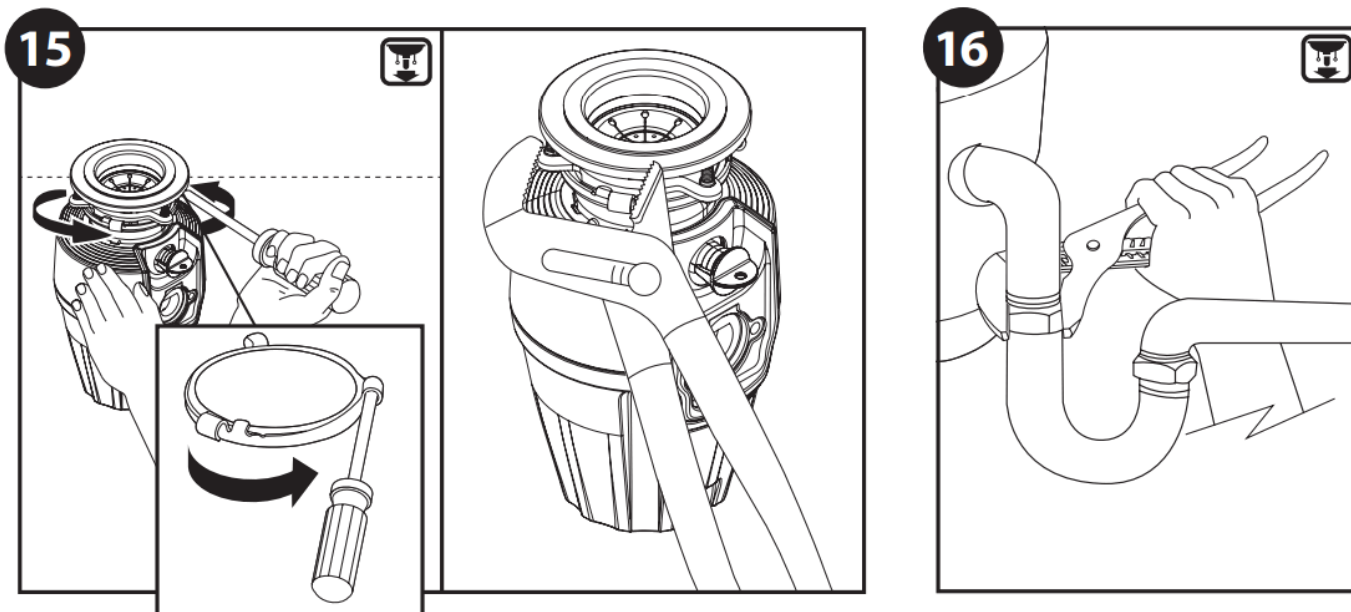
For installation requiring hardwire electrical connections, proceed to Page 10

Before connecting the disposal to the mounting assembly under the sink, check that the Lower Mounting Ring (I) is in place and the Cushion Mount (H) is engaged securely around the top lip of the disposal.

1. Align the discharge elbow with the drain connection and hang the disposal by aligning the 3 mounting tabs on

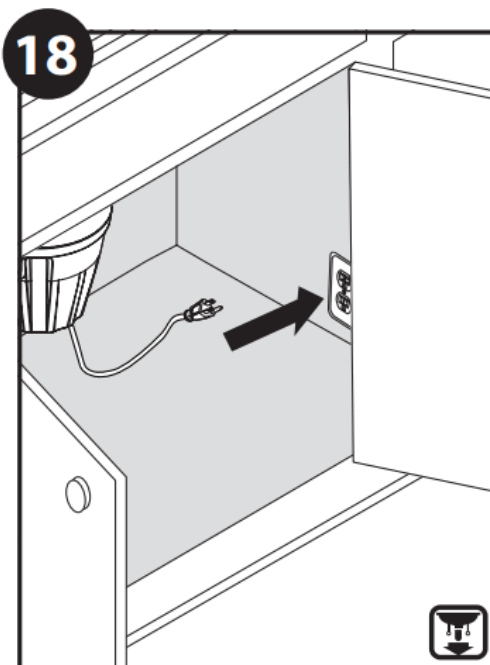
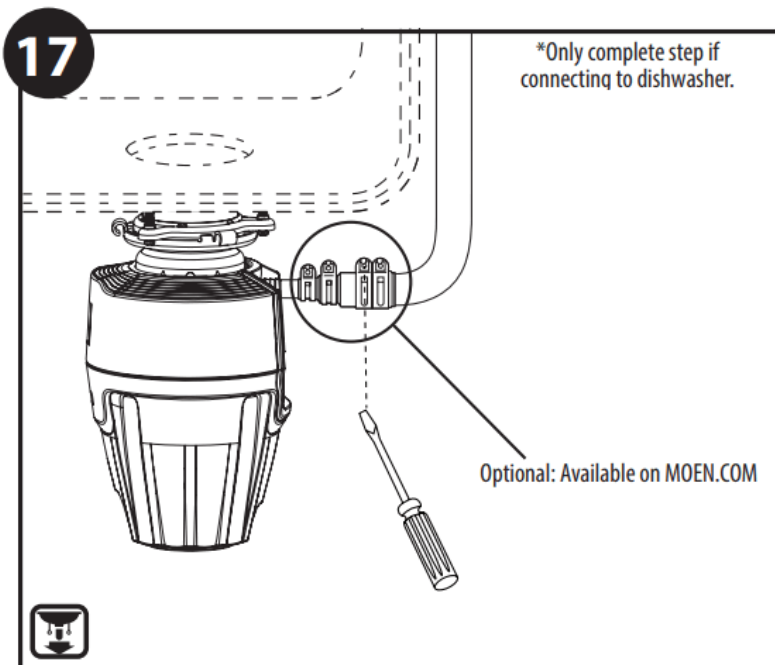
the lower mounting ring (1) with the slide-up ramps on the upper mounting ring (F).

2. Rotate the lower mounting ramp onto the upper mounting ring (verify all 3 tabs are engaged).



Tighten the lower mounting ring until all 3 mounting tabs lock over the hump at the top of the ramps of the upper mounting ring. If you are unable to turn, insert a screw driver through one of the tubes on the lower mounting ring to provide extra leverage, use adjustable pliers for final tightening.

Reconnect the discharge elbow to the drain line. (the reversal of page 4, step A) Use a wrench to secure the drain line where it attaches to disposal discharge tube. **DO NOT OVERTIGHTEN**. Remove tools, packaging or materials used for installation from the sink. Make sure all plumbing connections are tight and in accordance with all plumbing codes and ordinances (If in doubt, contact a qualified plumber). Run water and check for leaks.



If you are utilizing a dishwasher, complete the following procedure. Connect the dishwasher hose using a hose clamp. A 7/8" inside diameter hose will fit the disposal. If the hose size is different, a Dishwasher Connector Kit should be used.

A. Connect the disposal cord to 110-120 volt, 60 Hz AC current only.

B. This waste disposal is equipped with a factory installed plug-in cord with a three prong grounding plug. If a 110-120 volt, 60 Hz AC grounding outlet is not available, have a proper outlet installed by a qualified electrician, or see section on optional hardwiring in **HARDWARE INSTALLATION** section.

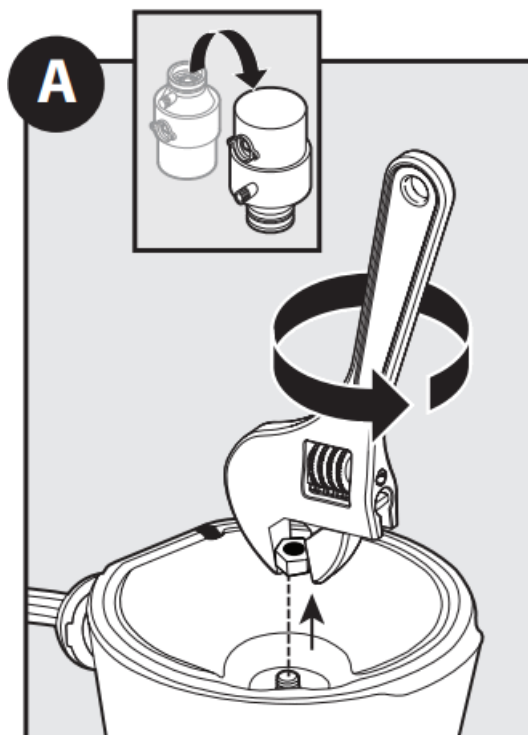
C. Outlet must be installed in accordance with local electrical codes. This waste disposal requires that a dedicated switch with a marked "Off" position.

The switch shall be installed within sight of the sink opening or the disposal.

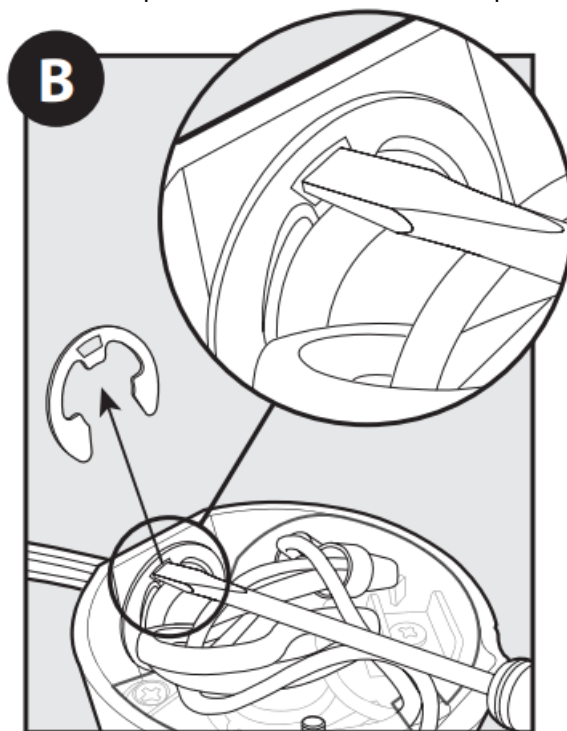
D. If the supply cord is damaged, it must be replaced by a cord assembly available through Customer Service.

OPTIONAL STEPS FOR HARDWIRE INSTALLATION

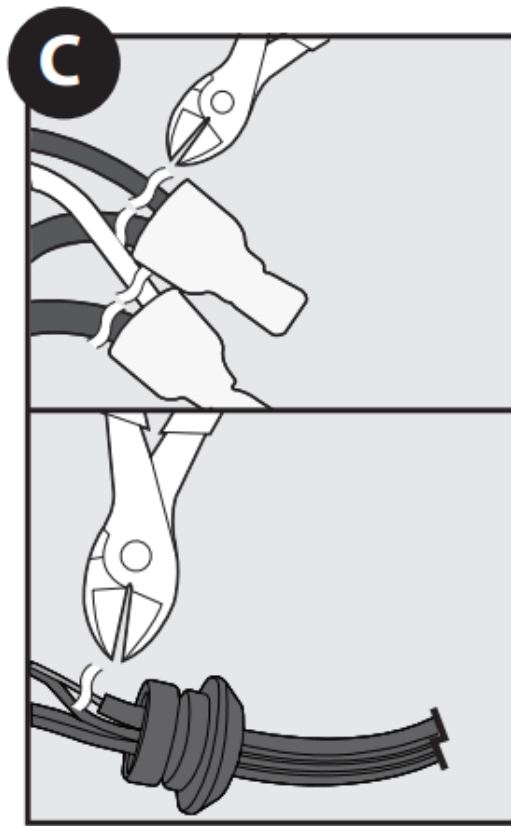
(Complete Steps A through G prior to mounting disposal on sink.)



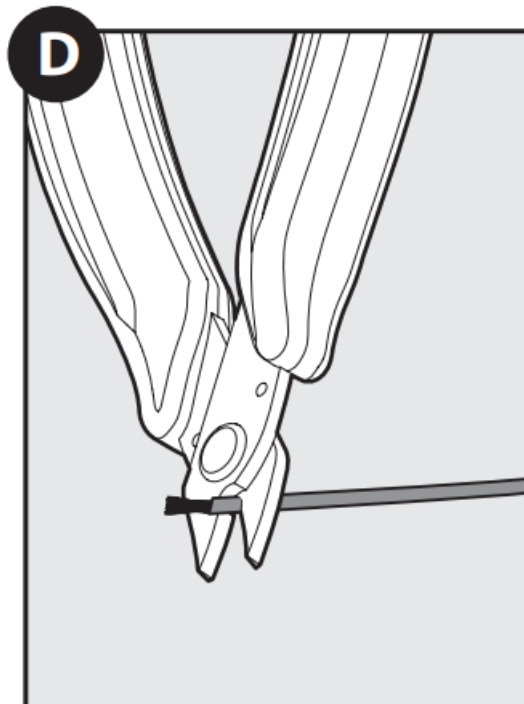
With power supply turned off, remove metal plate on the bottom of the disposal.



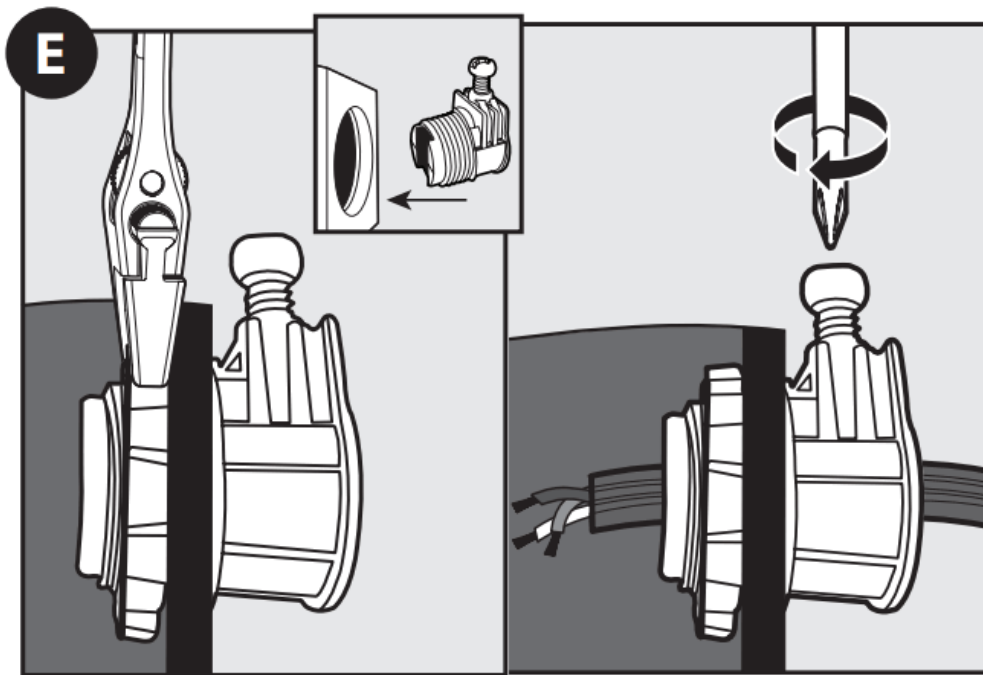
Remove clip with needle nose pliers or flathead screwdriver from the strain relief piece of the cord, and remove cord.



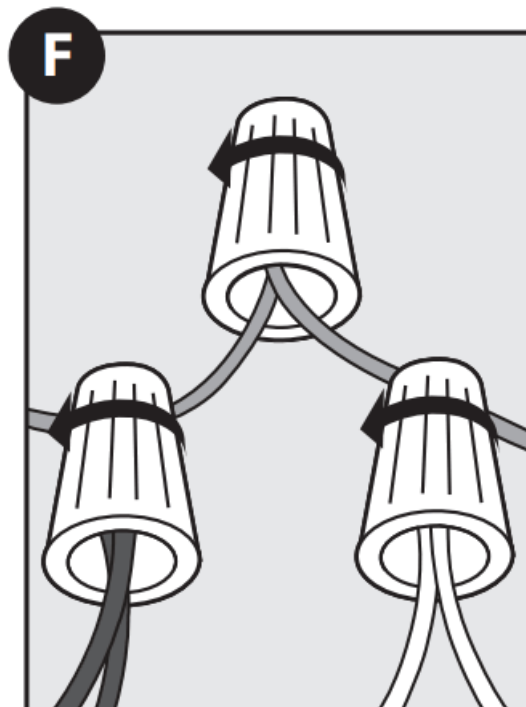
Cut white and black wires off close to the connectors. Pull cord out of housing. Cut green ground wire close to the cord strain relief.



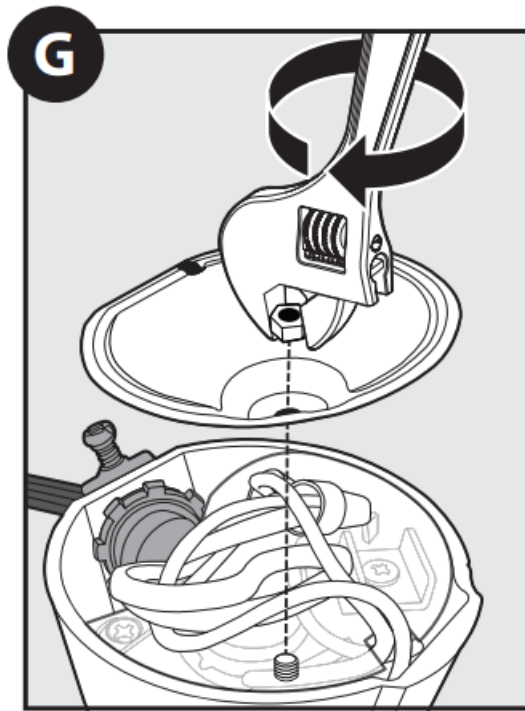
Strip the black, white and green wire coating from last 1/2" of each wire.



Insert cable connector (not included) into the access hole and secure by tightening the nut. From wall, insert power supply cable through the connector and tighten connector.



Connect internal disposal wire leads to coordinating wire lead from electrical source. Connect white to white, black to black or red, and green ground wire to the ground lead with wire nuts (not included).



Push wires into the disposal and replace the metal bottom plate (do not displace plastic shield with label).

BATCH FEED OPERATING INSTRUCTIONS

(Model GXB75c)

A. Remove batch feed stopper and turn on a medium flow of cold water.

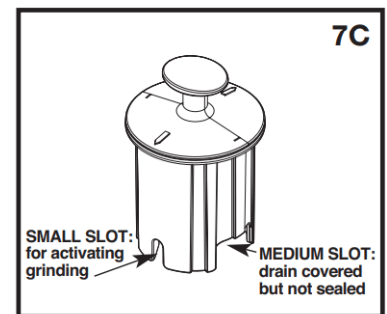
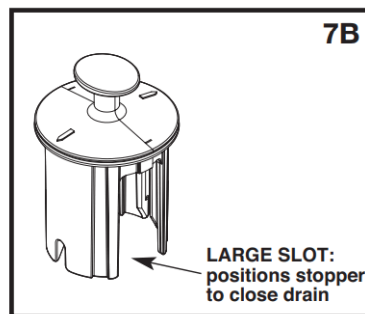
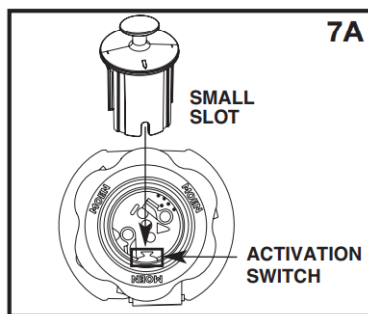
B. Scrape in food waste.

C. Insert batch feed stopper to start disposal. Using the arrows on the top of the stopper as a guide, align one of the two small slots on top with the activation switch inside the neck of the disposal (see 7A). Push down firmly to turn the disposal on. Lift stopper to shut off the disposal.

D. Run water for 15 seconds after grinding stops. This assures all waste is thoroughly flushed through the drain.

E. To fill sink, insert batch feed stopper and align the largest slot (see 7B) with the activation switch. Push down to seal sink without starting the disposal. When medium sized slot (see 7C) in stopper base is lined up with the activation switch, water can drain but tableware cannot accidentally dropped into disposal.

NOTE: Batch Feed Stopper should be hand washed with mild soap. Do not place in dishwasher.



GROUNDING INSTRUCTIONS (CORDED INSTALLATION): This appliance must be grounded. In the event of a malfunction or breakdown, grounding provides a path of least resistance for electric current to reduce the risk of electric shock. THIS DISPOSAL IS EQUIPPED WITH A CORD HAVING AN EQUIPMENT- GROUNDING CONDUCTOR AND A GROUNDING PLUG. The plug must be plugged into an outlet that is properly installed and grounded in accordance with all local codes and ordinances. For corded installation, do not modify the plug provided with the appliance. If the plug will not fit into the outlet, or if you are in doubt as to whether your outlet is properly grounded, call a qualified electrician.

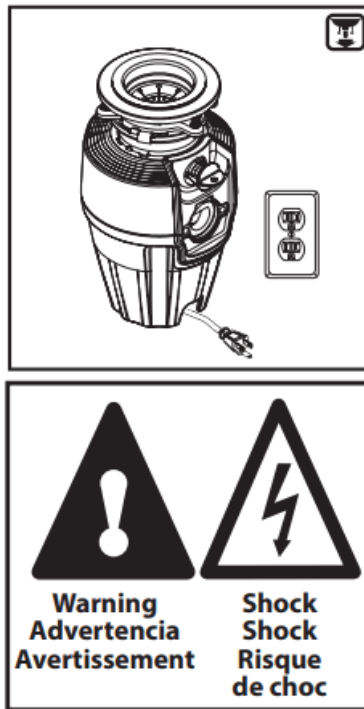
WARNING-Improper connection of the equipment-grounding conductor can result in a risk of electric shock.

GROUNDING INSTRUCTIONS (HARDWIRE INSTALLATION): This disposer must be connected to a ground, metal, permanent wiring system; or an equipment-grounding conductor must be run with the circuit conductors and connected to the equipment-grounding terminal or lead on the disposer.

ELECTRICAL CONNECTIONS

NOTE: If you are not familiar with electrical power and procedures, call a qualified electrician.

- A. Connect disposal into properly grounded outlet (see Grounding Instructions, above).
- B. Outlet must be 110-120 volt, 60Hz AC current only. Outlet must be installed in accordance with local electrical codes.
- C. If a properly grounded 110-120 volt, 60Hz AC outlet is not available, have a proper outlet installed by a qualified electrician.
- D. Outlet must be controlled by a dedicated wall switch with a marked “off” position, and have a proper switch installed by a qualified electrician.
- E. Switch must be mounted within sight of sink opening or disposal.
- F. If the supply cord is damaged, it must be replaced by a cord assembly available through Customer Service.



LIMITED WARRANTY AND IN-HOME SERVICE

WHAT THIS LIMITED WARRANTY COVERS: Residential Consumer. If this Food Waste Disposer (“Product”) or any part of the Product fails at any time during its “Warranty Period” stated below due to defects in material or workmanship, Moen Incorporated (“Moen”) warrants to the original “Residential Consumer” that Moen will repair or replace the Product or part in the Residential Consumer’s home located in the United States (“USA”) or Canada, free of charge, or if Moen determines in its sole discretion that this remedy is not feasible, Moen will refund the Residential Consumer’s original purchase price of the Product or provide a credit towards another Moen garbage disposer. This warranty is not transferrable to subsequent owners of the residence.

The original “Residential Consumer” means a person who owns and occupies their USA or Canadian home at the time the Product is initially installed, or who is the first purchaser and occupant of that home from a builder/contractor/developer, or who resides in a living unit in a USA or Canadian “Multi-Family Application” (such as a duplex, apartment, or cooperative) when the Product is first installed and is responsible for the cost of the Product purchase and maintenance.

Product SKU Number (located at bottom of Product)	Horsepower (HP) (located at bottom of Product)	Warranty Period Duration for Residential and Multi-Family Applications (duration in Years) (measured from Product purchase date)
GX100C	1	10
GXB75C	0.75	10
GX75C	0.75	10
GXS75C	0.75	10
GX50C	0.5	5
GXP50C	0.5	5
GXP33C	0.33	5

Commercial Application – 1 Year Duration. If the Product is installed under conditions in which no one qualifies as a “Residential Consumer” or “Multi-Family Application” as defined above, then the warranty holder is the owner of the dwelling or building in which the Product has been installed at the time of installation (“Commercial Holder”). For example, this includes owners of commercial or investment buildings, hospitals, nursing/assisted or staged-care living units). Except for the warranty duration, which is 1 year from the date of purchase, Products used in such commercial applications are warranted on the same terms and conditions, including but not limited to In-Home Service, as stated in this Limited Warranty.

EXCLUSIVE REMEDY UNDER THIS LIMITED WARRANTY: THIS LIMITED WARRANTY STATES YOUR SOLE AND EXCLUSIVE REMEDY AND MOEN’S SOLE OBLIGATION IN THE EVENT OF ANY DEFECTIVE OR NON-CONFORMING PRODUCT. THESE PROVISIONS CANNOT BE CHANGED BY ANY PARTY ON BEHALF OF MOEN. REPAIRED OR REPLACED COMPONENTS ARE WARRANTED ONLY ON THE SAME TERMS AND FOR THE REMAINDER OF THE WARRANTY PERIOD OF THE ORIGINAL PRODUCT. MOEN RESERVES THE RIGHT TO DISCONTINUE OR CHANGE ANY PRODUCT. IF A PRODUCT OR COMPONENT IS NOT AVAILABLE, MOEN MAY SELECT AND PROVIDE A REPLACEMENT PRODUCT OR COMPONENT OF EQUIVALENT QUALITY AND PRICE.

WHAT THIS LIMITED WARRANTY DOES NOT COVER:

This Limited Warranty does not cover or include Product defects, non-conformities, damages or losses attributable to or arising from:

- Accidents; abuse; misuse; negligence; lack of or improper cleaning or maintenance; damage from incorrect installation or mounting (other than by a Moen authorized service professional) such as electrical connections due to improper installation, leaks at the sink flange, dishwasher inlet or discharge elbow, or damage from excessive torqueing of manufacturer’s screws; any operation inconsistent with Moen’s recommendations and instructions that are generally available in Moen’s Product Owner’s Guide or on the Moen website at www.moen.com. NOTE: to reduce the risk of damage to the Products and personal injury, do not put into the Product items such as large whole bones, clams or oyster shells, whole corn husks, glass, china, plastic, metal such as bottle caps, tin, aluminum foil, utensils, hot grease, or other hot liquids. READ MOEN INSTALLATION AND USE INSTRUCTIONS CAREFULLY BEFORE INSTALLATION AND USE. AND NOTE FURTHER: DO NOT ATTEMPT TO LUBRICATE YOUR PRODUCT AND NEVER PUT LYE OR CAUSTIC CHEMICAL DRAIN CLEANERS INTO THE PRODUCT, AS THEY ARE CONSIDERED IMPROPER MAINTENANCE AND MAY CAUSE CORROSION OF METAL PARTS WHICH DAMAGE WILL BE DETECTABLE AND NOT COVERED BY THIS WARRANTY.

- Excessive wear beyond normal wear and tear from private household use; damage from fire, flood, or other acts of God.
- Outdoor installations or use with yard or planting debris or soil.
- Repair or replacement service performed by other than by a Moen authorized service professional.
- Removal of any other materials (such as sinks, counters, tiles, flooring or other plumbing fixtures), reinstallation, refinishing, or additional labor if and to the extent required or provided by Moen's authorized service professional in order to repair or replace the Product or part under warranty.
- Installations in commercial, industrial, or investment property, or in multi-resident facilities except to purchasers who qualify as Residential Consumers or Commercial Holders, as defined above.
- Installations anywhere other than the United States and Canada.

DISCLAIMER OF OTHER WARRANTIES:

EXCEPT AS STATED IN THE FOLLOWING SENTENCE, THIS LIMITED WARRANTY IS THE SOLE AND EXCLUSIVE WARRANTY OF MOEN WITH RESPECT TO THE PRODUCTS. ALL IMPLIED WARRANTIES ARE STRICTLY LIMITED TO THE DURATION OF THE LIMITED WARRANTY APPLICABLE TO THE PRODUCTS AS STATED ABOVE, INCLUDING BUT NOT LIMITED TO, ANY WARRANTY OF MERCHANTABILITY OR OF FITNESS FOR A PARTICULAR PURPOSE. SOME STATES OR PROVINCES DO NOT ALLOW LIMITATIONS ON HOW LONG AN IMPLIED WARRANTY LASTS, SO THE ABOVE LIMITATION MAY NOT APPLY TO YOU.

MOEN'S LIMITATION OF LIABILITY:

NOTWITHSTANDING THE TERM OF ANY OTHER LIMITED OR IMPLIED WARRANTY, OR IN THE EVENT THAT THIS LIMITED WARRANTY FAILS OF ITS ESSENTIAL PURPOSE, IN NO EVENT WILL MOEN'S ENTIRE LIABILITY EXCEED THE PURCHASE PRICE OF THE PRODUCT. FURTHER, MOEN SHALL NOT UNDER ANY CIRCUMSTANCES BE LIABLE FOR ANY CONSEQUENTIAL, SPECIAL, INDIRECT, INCIDENTAL, OR PUNITIVE DAMAGES OF ANY KIND, INCLUDING BUT NOT LIMITED TO, PERSONAL INJURY, PROPERTY DAMAGE, TEMPORARY/PERMANENT RELOCATION OF RESIDENCE OR PROPERTY, EMOTIONAL DISTRESS, LOSS OF USE, INCONVENIENCE, CLAIMS OF THIRD PARTIES FOR DAMAGES, LOST REVENUES AND LOST PROFITS, ARISING OUT OF ANY THEORY OF RECOVERY, INCLUDING STATUTORY, CONTRACT OR TORT. SOME STATES OR PROVINCES DO NOT ALLOW THE EXCLUSION OR LIMITATION OF INCIDENTAL OR CONSEQUENTIAL DAMAGES, SO THE ABOVE LIMITATION OR EXCLUSION MAY NOT APPLY TO THE ORIGINAL PURCHASER.

MAKING CLAIMS AND OBTAINING IN-HOME SERVICE:

To obtain benefits under this Limited Warranty, contact Moen at www.moen.com or 1.800.289.6636 for instructions on obtaining repair or replacement and in-home service from a Moen authorized service professional. Claimant will be required to provide proof of Product purchase and premises ownership, and any replaced Product or components are required to be returned to Moen or the Moen authorized service representative. Moen will determine in its sole discretion if a Product or claim is covered by this Limited Warranty.x

Please Complete and Register Online, Mail or Call.

www.moen.com/product-registration

Yes! I would like to receive Moen's Consumer eNewsletter and communications about exciting innovations and products by email.

The model number and serial numbers can be located on the engraved metal plate on the bottom of the disposal. The model number is located directly below Moen Incorporated and the serial number is in the center box.

Register Online

www.moen.com/product-registration

Complete and Mail

Simply complete and return this registration card within 10 days.

Call Consumer Services

1-800-BUY-MOEN

1-800-289-6636

Please Contact Moen First

For Installation Help, Missing or Replacement Parts

(USA)

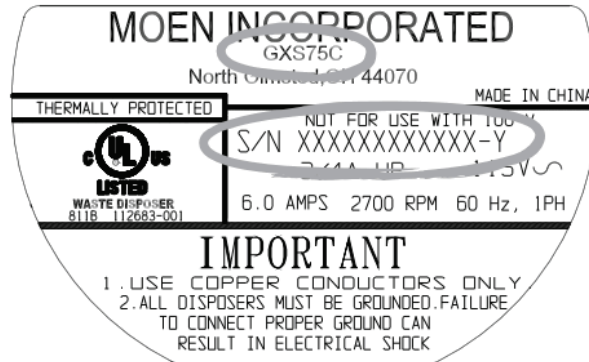
1-800-BUY-MOEN (1-800-289-6636)

WWW.MOEN.COM

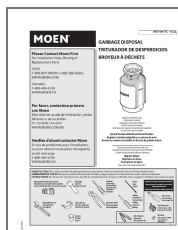
(Canada)

1-800-465-6130

WWW.MOEN.CA



Documents / Resources



[MOEN GXP50C Garbage Disposal with Power Cord](#) [pdf] User Manual

GXP50C Garbage Disposal with Power Cord, GXP50C, Garbage Disposal with Power Cord, Disposal with Power Cord, Power Cord

References

- [MOEN | Bathroom & Kitchen Faucets](#)
- [M MOEN | Bathroom & Kitchen Faucets](#)
- [M MOEN | Bathroom & Kitchen Faucets](#)
- [M Moen | Llaves para baÑo y cocina, cabezales, accesorios y mÑs](#)
- [M Register Your Product | Moen](#)