



modum MODsense Temperature Monitoring Solution User Guide

[Home](#) » [modum](#) » modum MODsense Temperature Monitoring Solution User Guide 

modum MODsense Temperature Monitoring Solution User Guide



Contents

- [1 How it Works](#)
- [2 Configure](#)
- [3 Start Recordings](#)
- [4 Check a Recording](#)
- [5 Need More Help?](#)
- [6 Documents / Resources](#)
- [7 Related Posts](#)

How it Works



1. The company administrator configures the MODsense system.
2. The dispatching operator uses the MODsense mobile app to activate a logger before sending a shipment.
3. The data logger records temperatures during shipment.
4. Upon receipt of the shipment, the receiving operator scans the shipment barcode (ID). The recorded data is now readout from the logger.
5. Qualified persons can view recorded data in the MODsense dashboard and decide whether to accept the shipment.

Configure

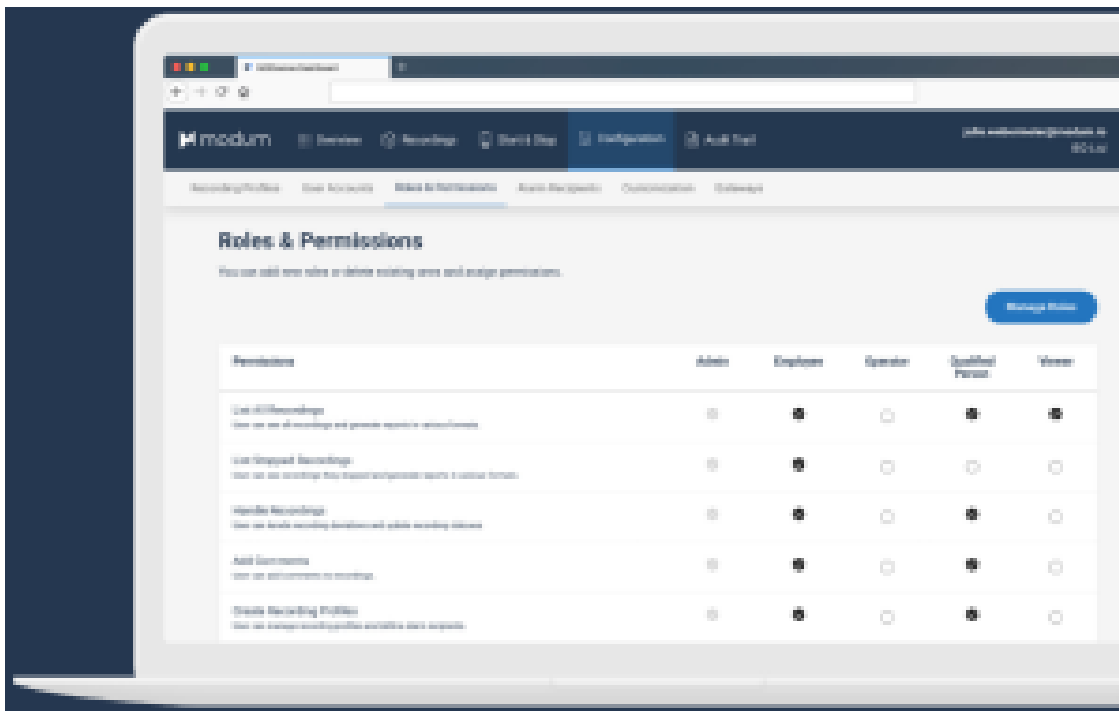


Required
Dashboard

More Information
User Manual

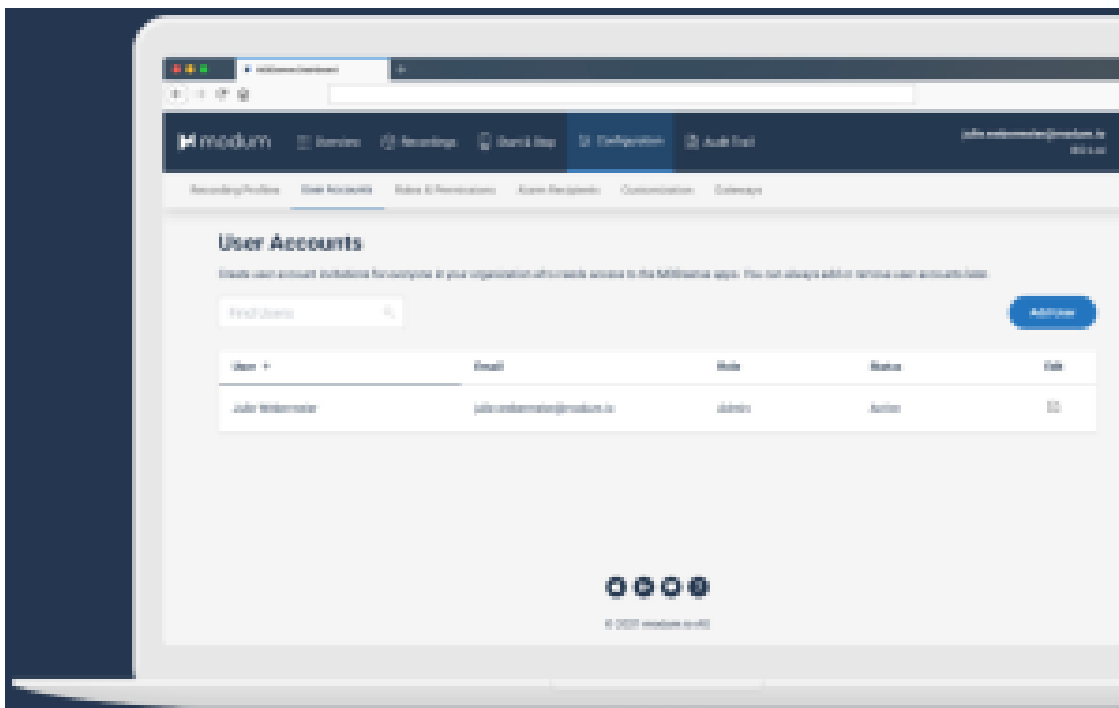
1. Manage Roles

Log in to the Dashboard using the link provided by Modum in your activation email. To begin setup, define your own Roles and Permissions, or simply use the default settings provided.



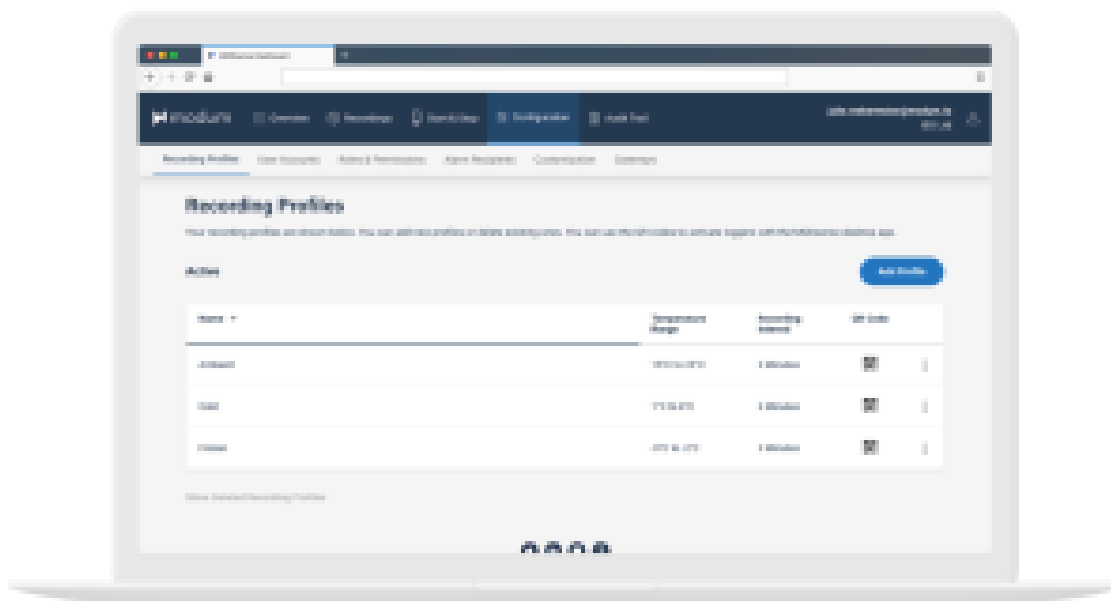
2. Add Users

Create User Accounts to add more users and choose what role you want to assign to them.



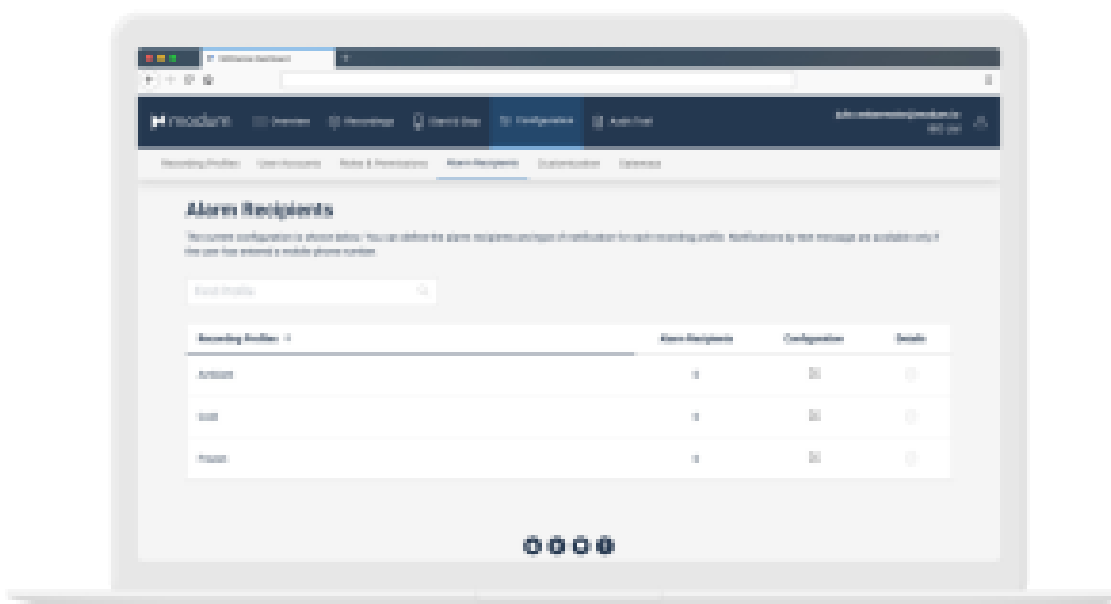
3. Create a Recording Profile

You can either use the default Recording Profiles or add new ones. To create new ones click Add Profile and enter the desired measurement parameters, such as the permitted temperature range.



4. Define Alarm Recipients

Edit the configuration to adjust each user's notification settings in the event of a temperature deviation.



Start Recordings



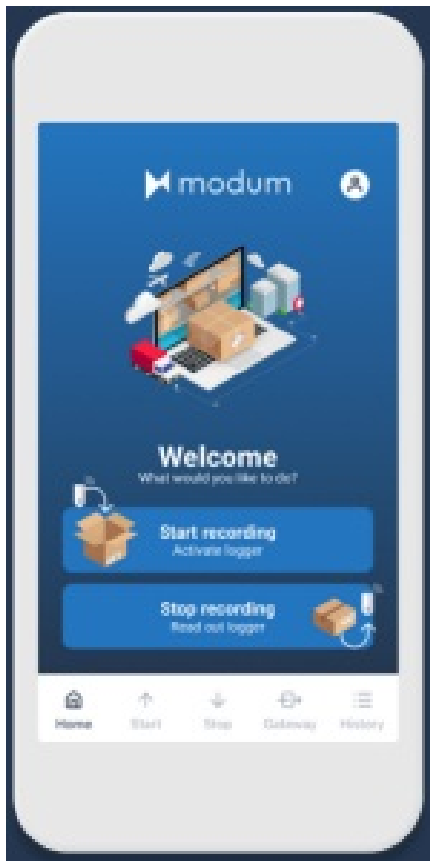
Required
Mobile App

More Information
User Manual "MODsense Mobile App"

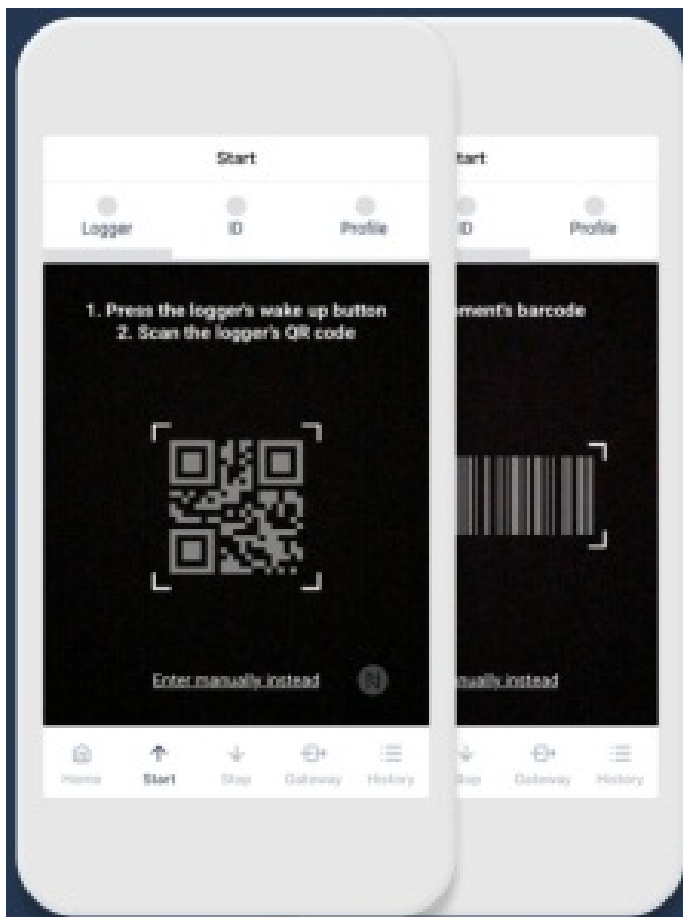
1. Open the Mobile App

Open the MODsense app on your mobile phone (download links are on the bottom of the next page). In the Navigation Bar, select Start to begin.

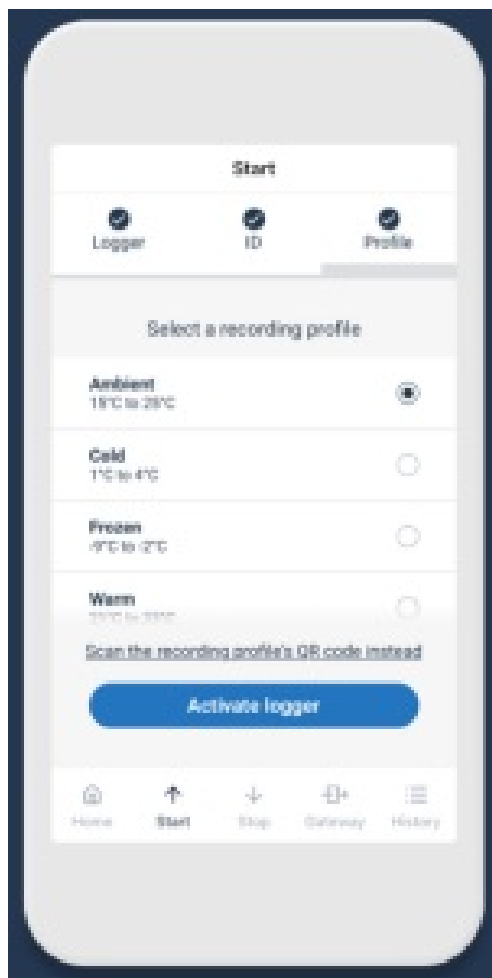
1. Start Screen



2. Scan Logger + Barcode (ID)



3. Choose Recording Profile



2. Scan a Logger + the Shipment Barcode

Wake-up the logger by pressing the button in the centre of the logger. The green LED in the middle will start flashing. Now follow the app instructions and scan the logger's QR code. Then scan the shipment barcode (ID). This can be either the sample barcode provided by Modum, a barcode you already use for your logistics or simply enter it manually. Attach the shipment barcode to your package.

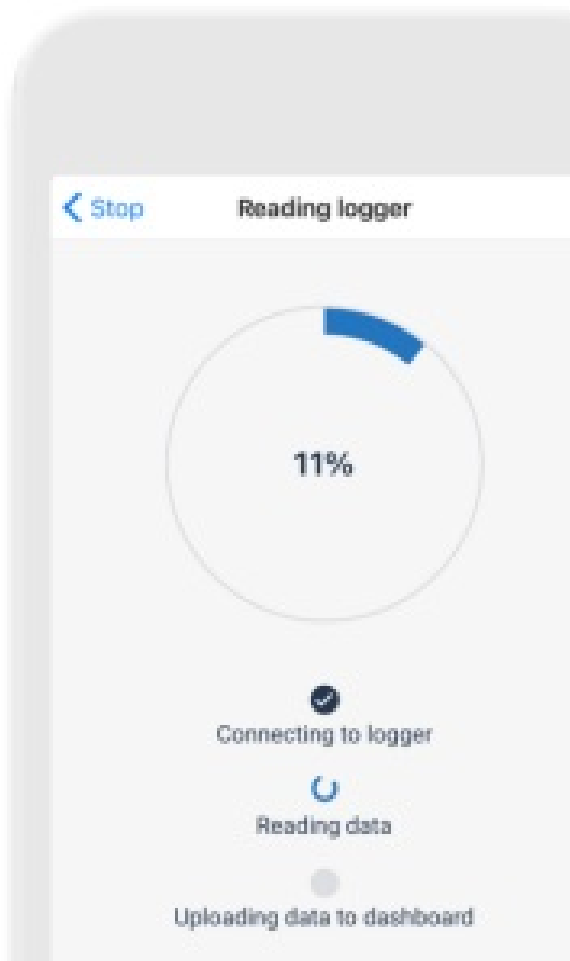
3. Select a Recording Profile

Select a recording profile from the list and press Activate logger. The logger has now been started and paired with the ID. The middle logger LED will flash rapidly and then turn off while the logger is running. You can now add the logger to your package and prepare it for shipment.

Stop Recordings

4. Reading Out a Logger

Tap Stop in the Navigation Bar and then scan the shipment barcode attached to your package (see step 2). The recording status is verified immediately and data can be viewed in the Dashboard.



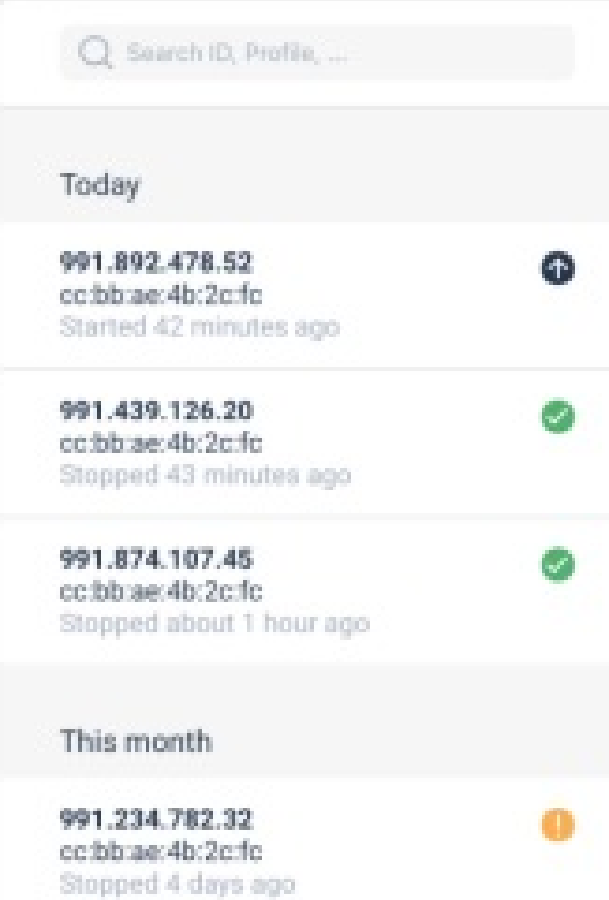
Note: The logger's QR code does not need to be scanned (optional). A readout can be performed by simply scanning the shipment barcode. The logger can stay inside the package.

Recording History

5. View Recording Details

In the Navigation Bar, tap History to view the most recent started and stopped recordings.

Tap any item and it will be expanded to display more information. To view even more details, click the More details link and you will be redirected to the MODsense dashboard item's recording detail page.



Download Mobile Application for iOS



Download Mobile Application for Android



Check a Recording

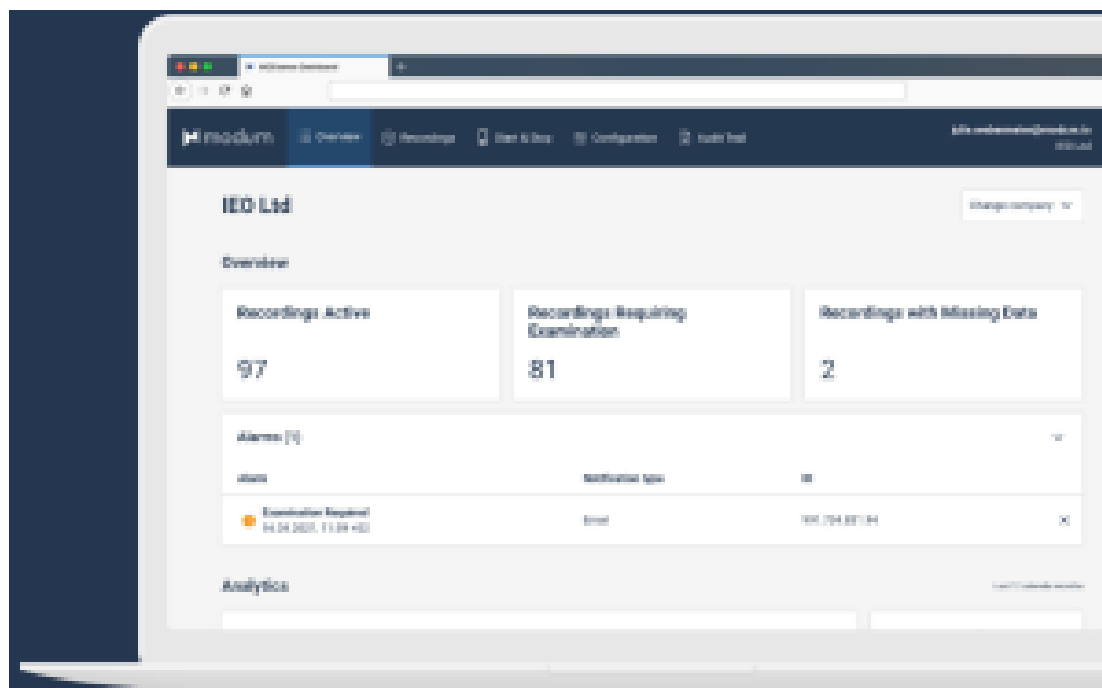


Required
Dashboard

More Information
User Manual “Monitoring”

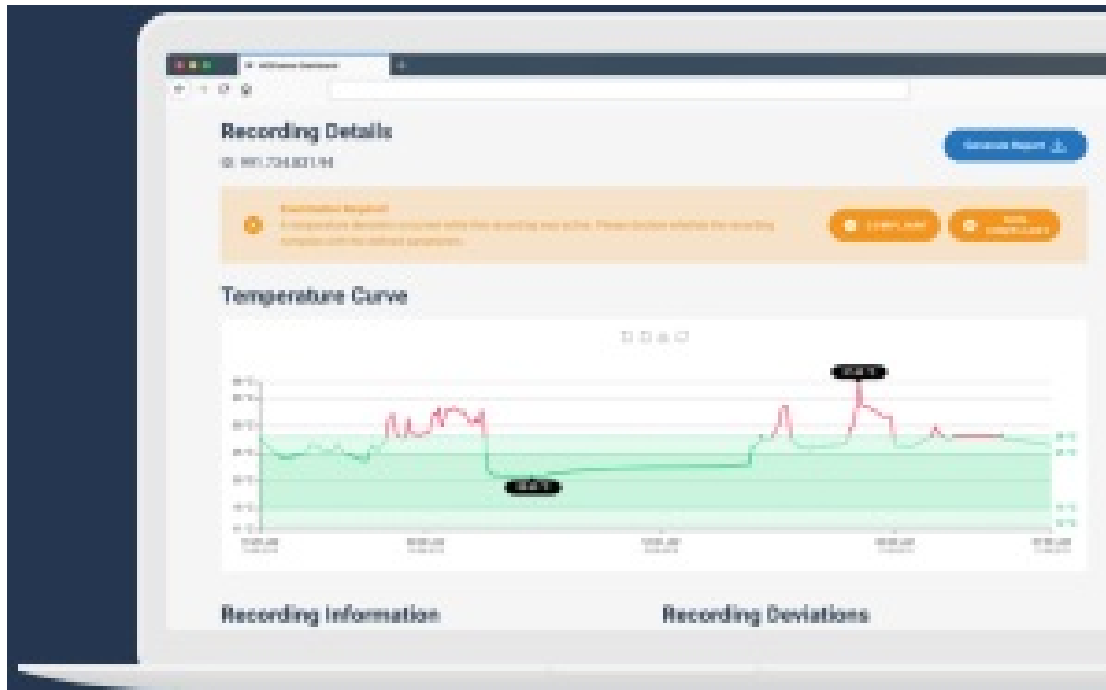
1. Check the Dashboard

The Overview area of the dashboard shows the status of recordings that need attention.
Click the recording for more details.



2. Review the Recording Details

Use the temperature curve and the recording information to decide whether the recording is ok. You can add comments to the Change & Comments log to discuss the recording with the rest of your team.



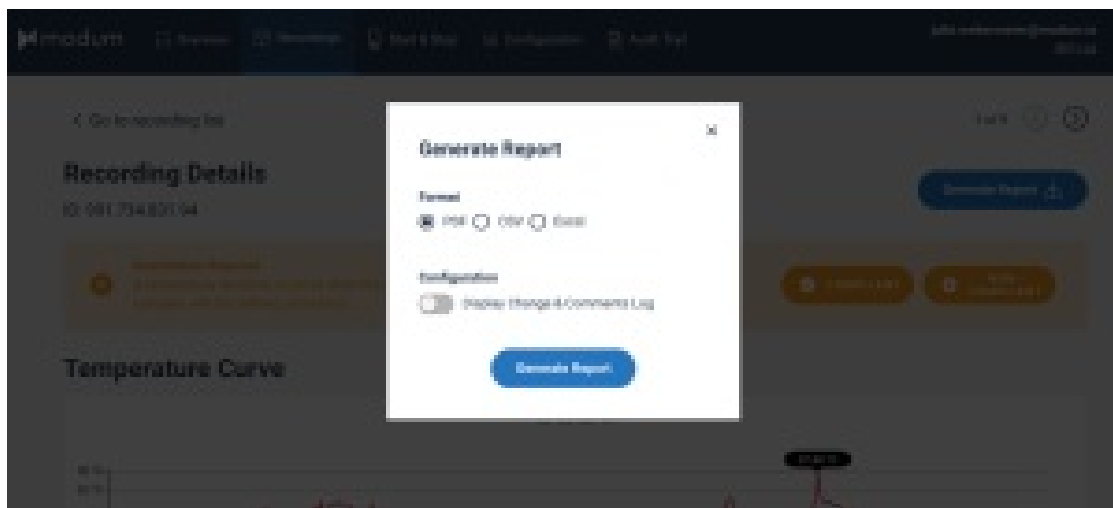
3. Declare Compliance

Declare whether the recording is compliant with the parameters in the recording profile.

The screenshot shows a 'Declare Compliance' dialog box overlaid on the 'Recording Details' page. The dialog box has a title bar and a large text input area with the placeholder text 'Add reason'. At the bottom right of the dialog are two buttons: 'Cancel' and 'Compliant'.

4. Generate Report

Click the top right button to generate a report for regulatory reporting in PDF, CSV, or Excel format. You can also choose whether to include the information from the Change & Comments log.



Need More Help?

- MODsense Dashboard
<https://dashboard.modum.io>
- Download MODsense Mobile Application

Apple App Store



Google Play Store



- Support
<https://support.modum.io>
- Complete User Manual
<https://support.modum.io>

Documentation & Manuals

- Learn More about Modum's Solutions

<https://modum.io/solutions/overview>

© 2021 modum.io AG. All rights reserved.

No part of this publication may be reproduced or transmitted in any form or for any purpose without the express permission of modum.io AG. The information contained herein may be changed without prior notice.

These materials are provided by modum.io AG for informational purposes only, without representation or warranty of any kind, and modum.io AG shall not be liable for errors or omissions with respect to the materials. Nothing herein should be construed as constituting an additional [warranty.modum.io](https://modum.io/warranty) AG and modum.io AG products and services mentioned herein as well as their respective logos are trademarks or registered trademarks of modum.io AG in Switzerland. All other product and service names mentioned are the trademarks of their respective companies.

modum.io AG


Poststrasse 5-7 8001 Zurich, Switzerland

<https://modum.io>

Version 1.9



Documents / Resources

 The image shows the cover of a document titled 'MODsense Quick Start Guide'. The cover is dark blue with white text. The title 'MODsense' is at the top, followed by 'Quick Start Guide'. At the bottom right, there is a small white logo that says 'modum'.	<p>modum MODsense Temperature Monitoring Solution [pdf] User Guide MODsense Temperature Monitoring Solution</p>
---	---