



# MODECOM 5200C Wireless Keyboard and Mouse Set User Manual

[Home](#) » [MODECOM](#) » MODECOM 5200C Wireless Keyboard and Mouse Set User Manual 

## Contents

- [1 MODECOM 5200C Wireless Keyboard and Mouse Set](#)
- [2 INTRODUCTION](#)
- [3 SPECIFICATION](#)
  - [3.1 INSTALLATION](#)
- [4 Documents / Resources](#)
- [5 Related Posts](#)

# MODECOM

## MODECOM 5200C Wireless Keyboard and Mouse Set



## INTRODUCTION

MODECOM 5200C is a combo set of wireless keyboard and mouse. It is using radio Nano receiver that is working in 2.4GHz frequency. Both keyboard and mouse use the same receiver, hence only one USB port is used for working with two devices.

## SPECIFICATION

### Keyboard:

- Number of keys: 104

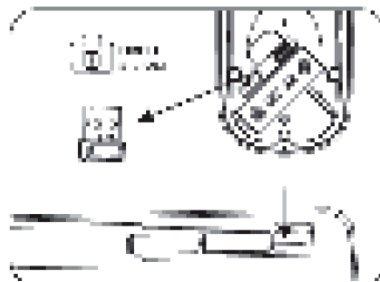
- Dimensions: (L •w• H): 435•12e•22mm
- Fen keys: 12
- Power: 2x AAA batteries 1.5V (not included)
- Power consumption: 3V — 5mA
- Weight: 420g

#### Mouse:

- Sensor: Optical
- Resolution (dpi): 800/1200/1600
- Dimensions: (L• w •H): 107•51•30mm
- Power: M battery 1.5V (not included)
- Power consumption: 1.5V — 13mA
- Weight: 50g

#### INSTALLATION

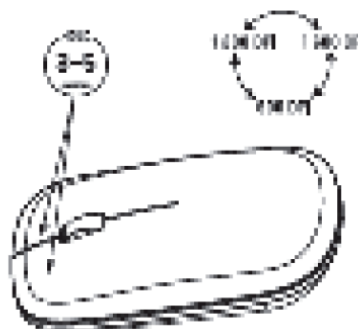
Please take the Nano receiver out of the box or the mouse (it is located under the upper casing, which must be carefully removed beforehand).



Please connect the Nano receiver to a USB port on Your computer.

In order for the set to work, you need to place 2 AAA batteries in the keyboard (the container is on its bottom) and one M battery in the mouse (the container is under the upper housing, which should be carefully removed beforehand) in the appropriate direction. In both devices, you must shift the Power switch to the “ON” position. After a while, the combo set should start working, the LED on the keyboard (located above the battery symbol ) will flash red for a while.

In order to change the dpi resolution in the mouse, between the available values, press the left and right mouse buttons for 3 to 5 seconds.



When the mouse battery level is low, the LED (located in the upper left corner next to the Scroll wheel) will flash red.

When the keyboard battery is low, one of the keyboard LEDs (located above the battery symbol ) will flash red.


#### IMPORTANT:

Please use the combo set only with alkaline batteries and for its intended purpose. If the combo set is not used for an extended period of time, please remove the batteries. Keep away from children.

This device was designed and made of high-quality reliable materials and components. If the device, its packaging, user's manual, etc. are marked with crossed waste container, it means they are subject to segregated household waste collection in compliance with the Directive 2012/19/EU of the European Parliament and of the Council. This marking informs that electric and electronic equipment shall not be thrown away together with household waste after it's been utilized. The user is obliged to bring the utilized equipment to electric and electronic waste collection point. Those running such collection points, including local connection points, shops or commune units, provide convenient system enabling to scrap such equipment. Appropriate waste management aids in avoiding consequences which are harmful for people and environment and result from dangerous materials used in the device, as well as improper storage and processing. Segregated household waste collection aids recycle materials and components of which the device was made. A household plays crucial role in contributing to recycling and reusing the waste equipment. This is the stage where the basics are shaped which largely influence the environment being our common good. Households are also one of the biggest users of small electrical equipment. Reasonable management at this stage aids and favors receding. In the case of improper waste management, fixed penalties may be imposed in accordance with national legal regulations.

Hereby, MODECOM POLSKA Sp. z o. o. declares that the radio equipment type Wireless Keyboard, Wireless mouse 5200G is in compliance with Directive 2014/53/EU. The full text of the EU declaration of conformity is available at the following internet address: [deklaracje.modecom.eu](http://deklaracje.modecom.eu)

**Documents / Resources**

	<p><a href="#">MODECOM 5200C Wireless Keyboard and Mouse Set</a> [pdf] User Manual</p> <p>5200C Wireless Keyboard and Mouse Set, 5200C, Wireless Keyboard and Mouse Set, Keyboard and Mouse Set, Mouse Set, Keyboard</p>
--	--