

MODECOM 2024 Mistral Argb Flow Midi Computer Case



MODECOM 2024 Mistral Argb Flow Midi Computer Case Instruction Manual

[Home](#) » [MODECOM](#) » MODECOM 2024 Mistral Argb Flow Midi Computer Case Instruction Manual 

Contents

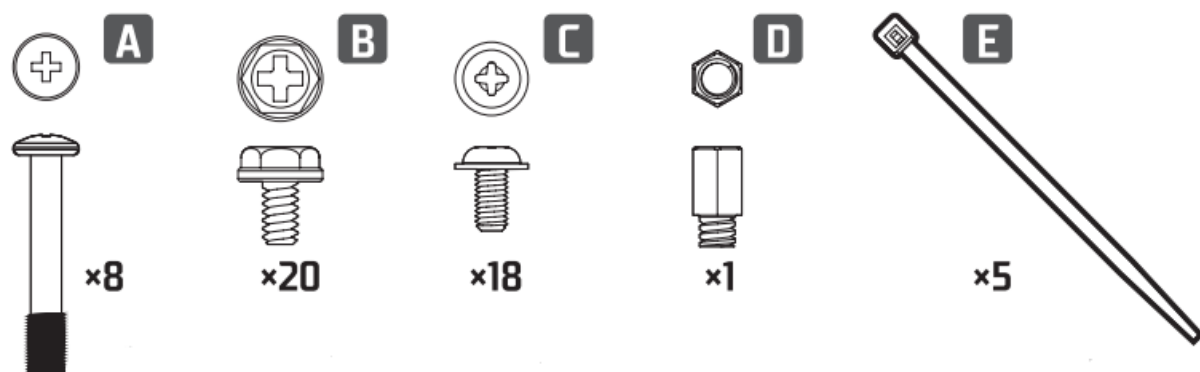
- 1 MODECOM 2024 Mistral Argb Flow Midi Computer Case
- 2 Accessories
- 3 Panel I/O
- 4 Overview
- 5 Panel Removal
- 6 ARGB Controller
- 7 Installing motherboard
- 8 Installing fans
- 9 Installing power supply
- 10 Installing VGA
- 11 Installing HDD
- 12 Installing SSD
- 13 Quick start guide/installation
- 14 Documents / Resources
 - 14.1 References

MODECOM

MODECOM 2024 Mistral Argb Flow Midi Computer Case

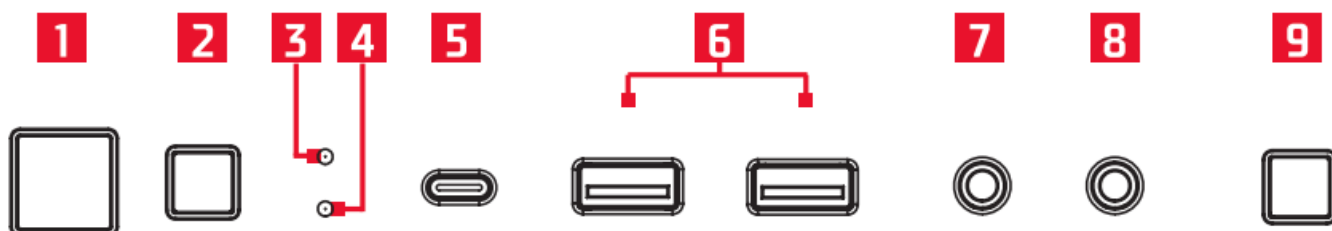


Accessories



- A FAN [RADIATOR] SCREW
- B PSU & PCIe SCREWS
- C MOTHERBOARD SCREWS
- D STANDOFFS
- E CABLE TIES

Panel I/O



1. POWER
2. RESET
3. HDD INDICATOR LIGHT
4. POWER INDICATOR LIGHT
5. USB-C
6. USB 3.0
7. SPEAKER
8. MIC
9. ILED CONTROL

Overview



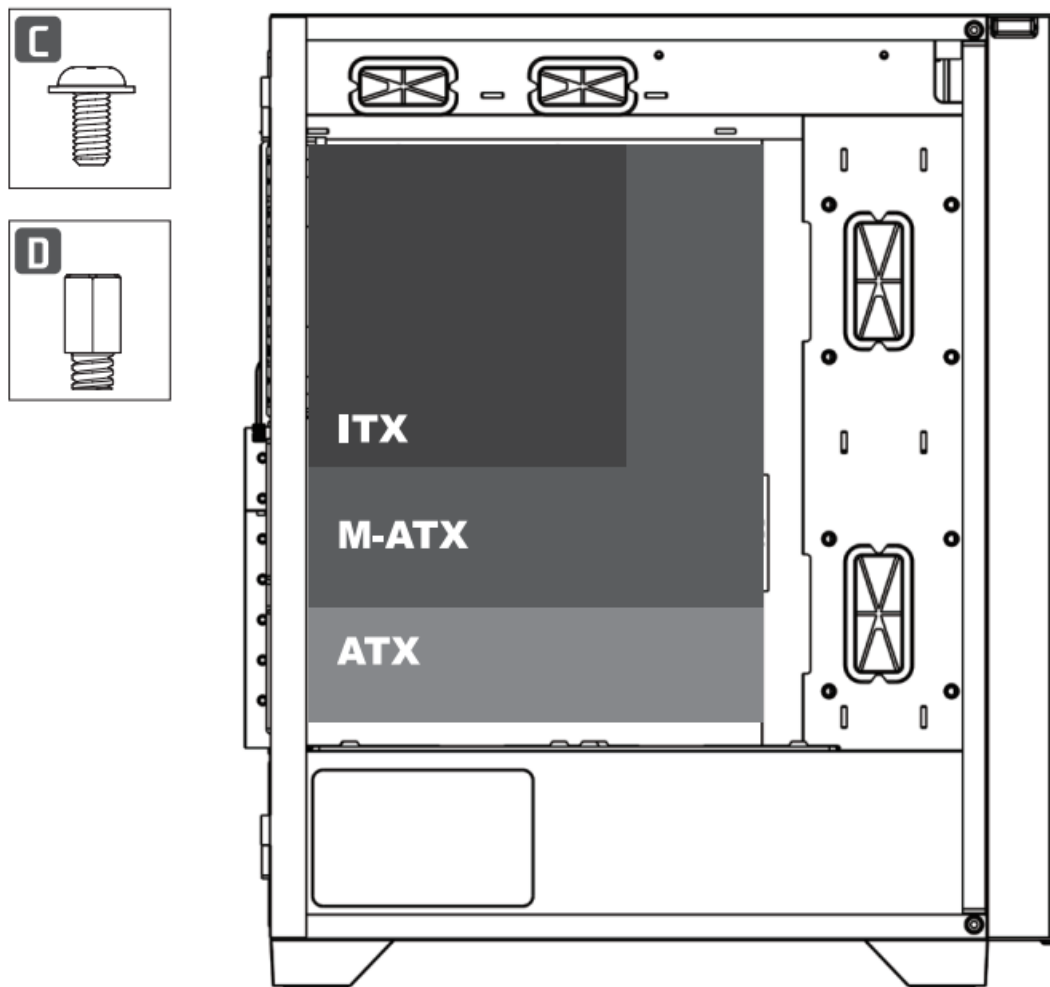
PSU MAX:
210 MM [WITH HDD/SSD CAGE]
350 MM [WITHOUT HDD/SSD CAGE]



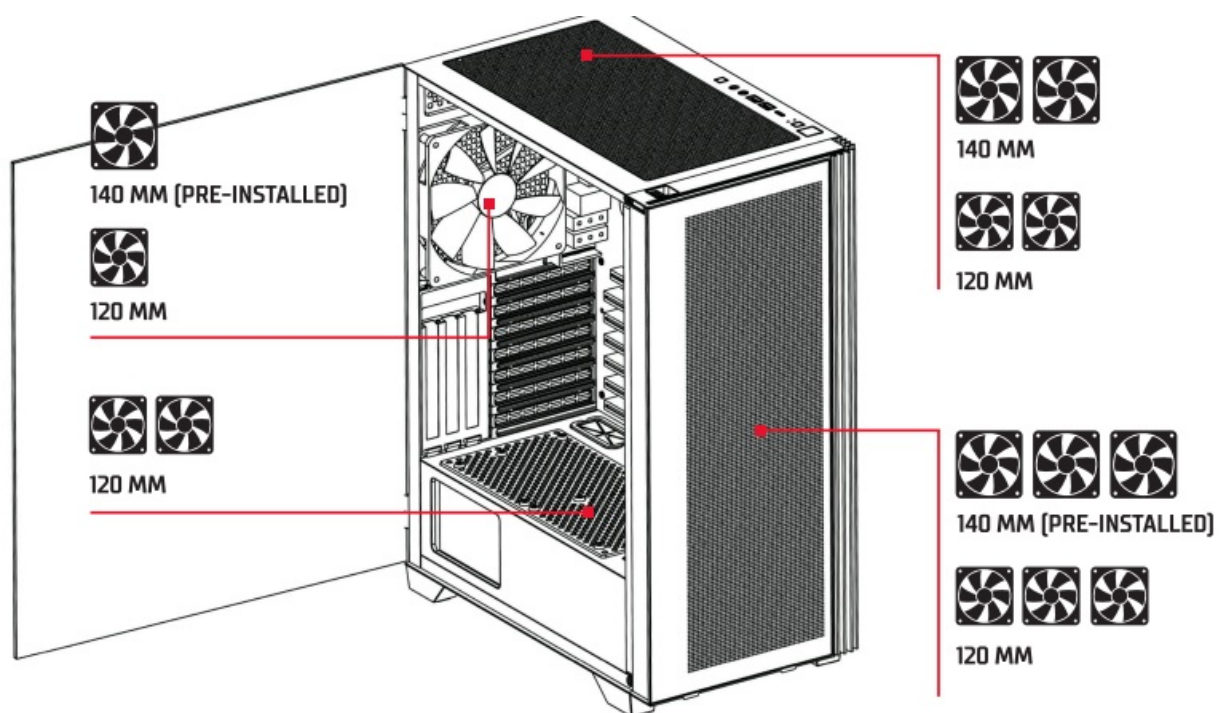
GPU MAX
330MM [WITH FANS]
345 MM [WITH COOLING AND FANS]

Panel Removal

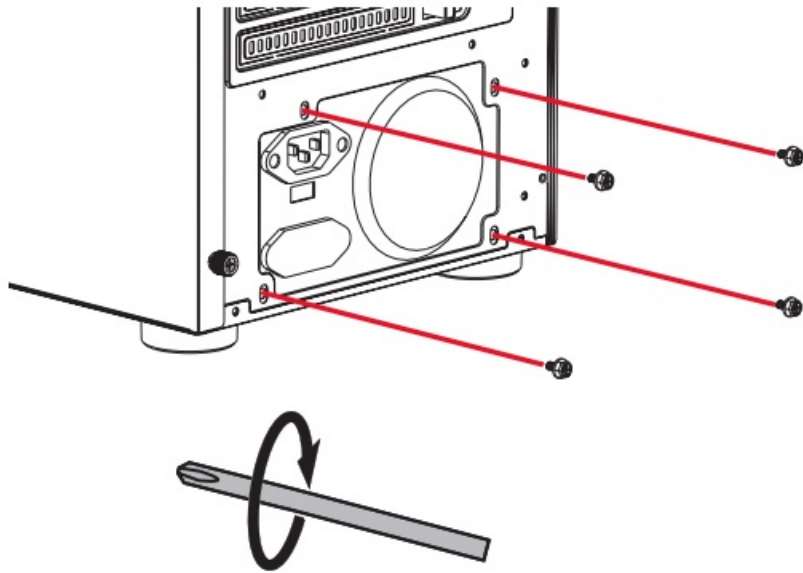
Installing motherboard



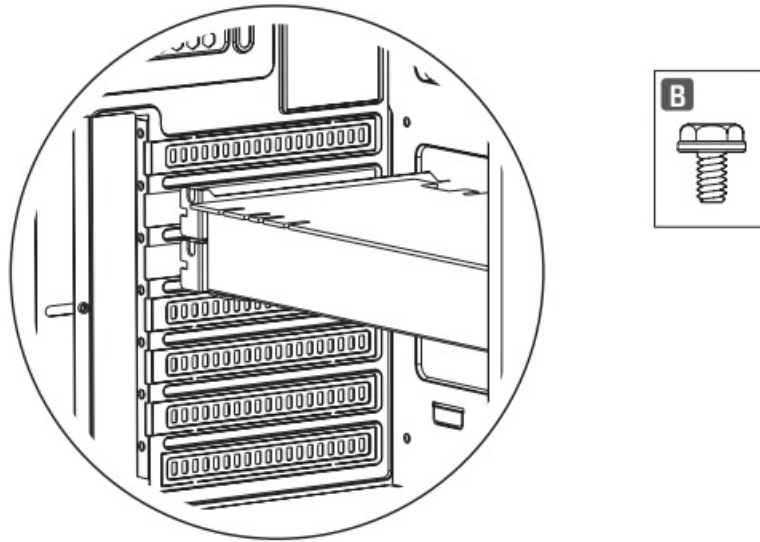
Installing fans



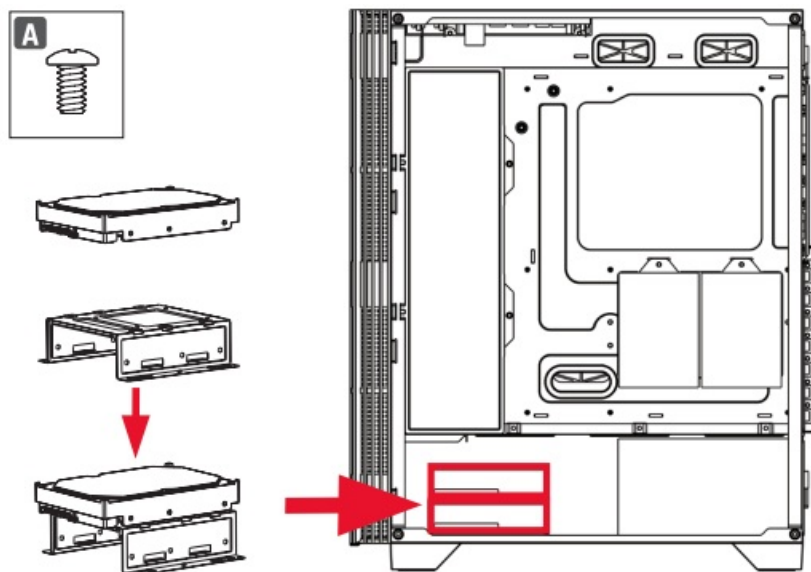
Installing power supply



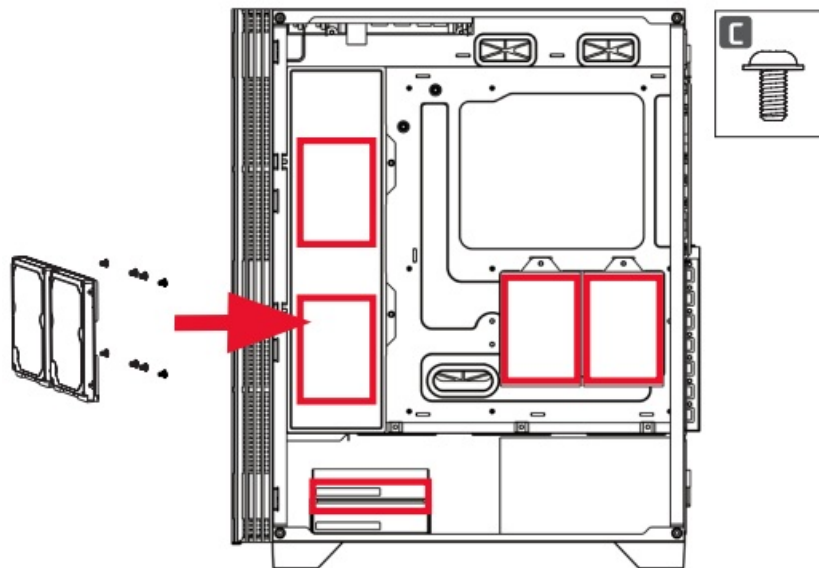
Installing VGA



Installing HDD



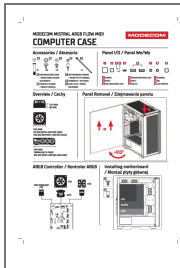
Installing SSD



Quick start guide/installation

1. Open the housing.
2. Install all computer components following the instructions in the individual assembly instructions for each component.
3. Mount in the housing and connect the power supply to the required components, following the installation instructions of the power supply and the instructions of the components that require its connection. The power supply is mounted in a tunnel, in the lower part of the case, with the fan facing outside the case (down).
4. Check the correct assembly of components and the connection of power plugs.
5. Close the housing.
6. Connect the monitor, keyboard and other accessories to the computer.
7. Connect the power cord to the socket in the power supply and to the 230V mains socket.
8. Set the power switch on the PSU housing to the I position (if present).

This device was designed and -0- made of high-quality reusable materials and components. If the device, its packaging, user's manual, etc. are marked with crossed waste container, it means they are subject to segregated household waste collection in compliance with the Directive 2012/19/UE of the European Parliament and of the Council. This marking informs that electric and electronic equipment shall not be thrown away together with household waste after it's been utilised. The user is obliged to bring the utilised equipment to electric and electronic waste collection point. Those running such collection points, including local collection points, shops or commune units, provide convenient system enabling to scrap such equipment. Appropriate waste management aids in avoiding consequences which are harmful for people and environment and result from dangerous materials used in the device, as well as improper storage and processing. Segregated household waste collection aids recycle materials and components of which the device was made. A household plays crucial role in contributing to recycling and reusing the waste equipment. This is the stage where the basics are shaped which largely influence the environment being our common good. Households are also one of the biggest users of small electrical equipment. Reasonable management at this stage aids and favours recycling. In the case of improper waste management, fixed penalties may be imposed in accordance with national legal regulations.



[MODECOM 2024 Mistral Argb Flow Midi Computer Case](#) [pdf] Instruction Manual
2024 Mistral Argb Flow Midi Computer Case, 2024, Mistral Argb Flow Midi Computer Case, Flow Midi Computer Case, Midi Computer Case, Computer Case

References

- [User Manual](#)

[Manuals+](#), [Privacy Policy](#)

This website is an independent publication and is neither affiliated with nor endorsed by any of the trademark owners. The "Bluetooth®" word mark and logos are registered trademarks owned by Bluetooth SIG, Inc. The "Wi-Fi®" word mark and logos are registered trademarks owned by the Wi-Fi Alliance. Any use of these marks on this website does not imply any affiliation with or endorsement.