




---

[Home](#) » [Mod-Land](#) » **Mod-Land DSRH06H11MB53 Vintage Style 3 Function Shower System User Manual** 

## Contents [ [hide](#) ]

[1 Mod-Land DSRH06H11MB53 Vintage Style 3 Function Shower System](#)

[2 INSTALLATION INSTRUCTIONS](#)

[3 BEFORE INSTALLATION](#)

[4 INSTALLATION STEPS](#)

[5 INSTALLATION DIMENSION](#)

[6 CLEANING CARE](#)

[7 Documents / Resources](#)

[7.1 References](#)

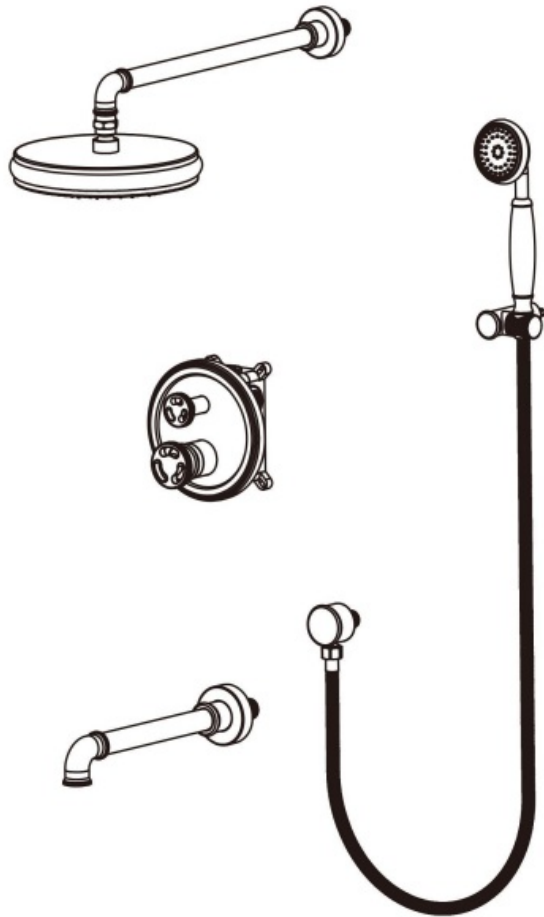
# MODLand

## Mod-Land DSRH06H11MB53 Vintage Style 3 Function Shower System



## **INSTALLATION INSTRUCTIONS**

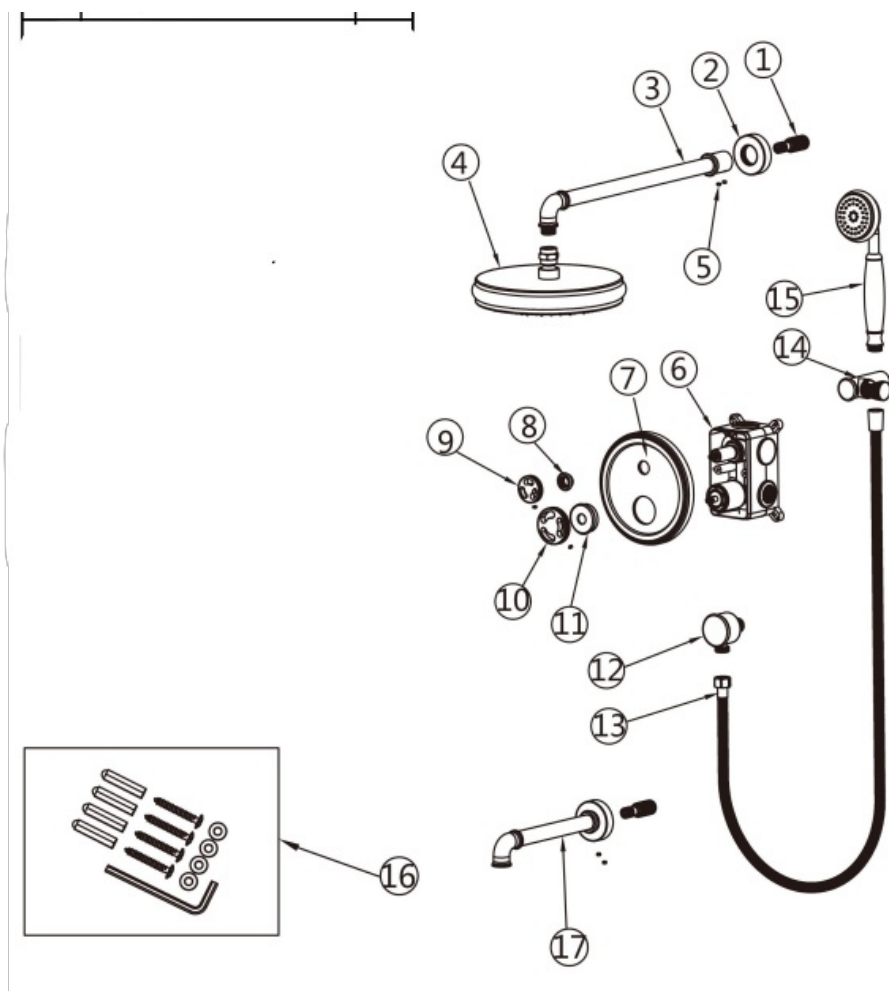
### **Installation Manual**



## BEFORE INSTALLATION

NO.	Item	Qty
1	Inner joint	2
2	Wall decoration cover	2
3	Shower arm	1

4	Rain shower head	1
5	Screw	6
6	Embedded box	1
7	Panel	1
8	Decorative cover	1
9	Water divider	1
10	Switch handwheel	1
11	Decorative cup	1
12	Hand shower seat	1
13	Shower hose	1
14	Hand shower bracket	1
15	Hand shower	1
16	Accessory bag	1
17	Spout	1



## Check accessories

### Standard List of Accessories:

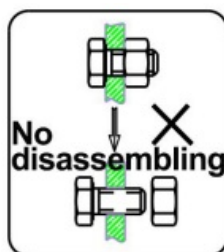
When you open the product packaging, please check whether the objects in it are consistent with the main body and accessories you purchased. If there is any inconsistency, please contact our company or our distributor.

### Note:

1. Accessories are subject to change without prior notice if the change does not affect usage.
2. The appearance of the product is subject to the physical objects you receive, and the schematic diagram is only for reference.

## INSTALLATION STEPS

This product has been inspected and debugged by the factory to the best condition. Please do not disassemble and assemble it yourself.

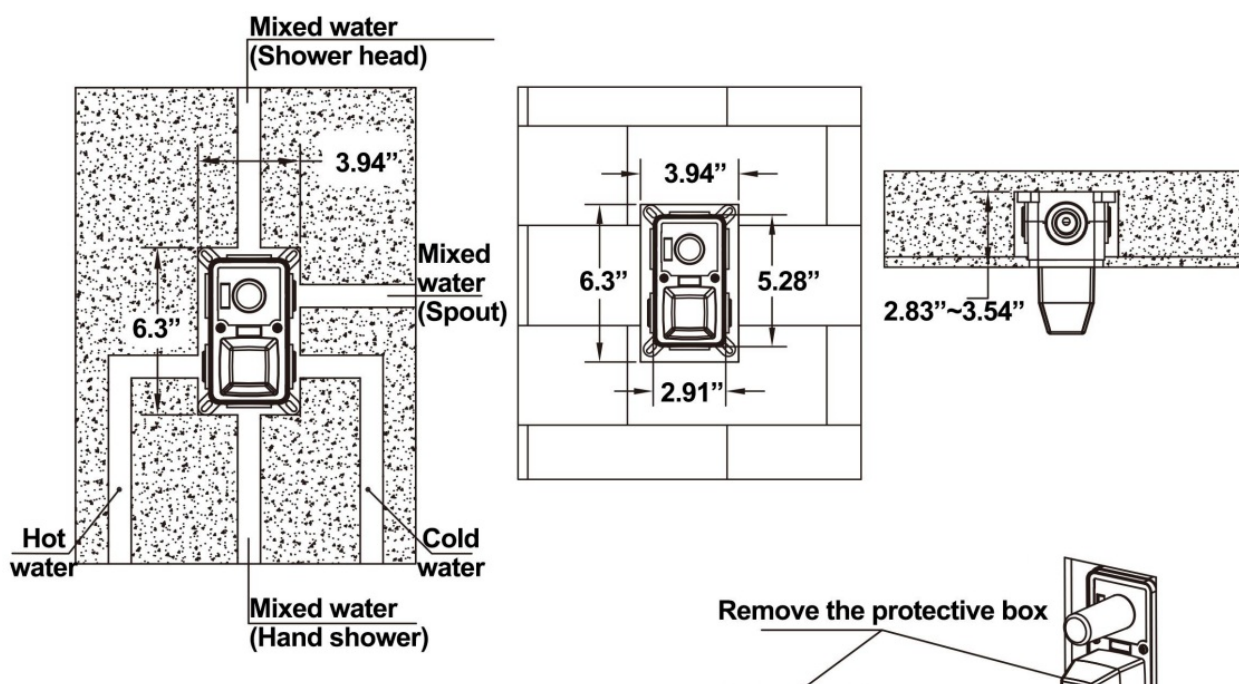


Before installing the product, please be sure to sundries and sludge from the water pipe to prevent sundries from blocking the product.

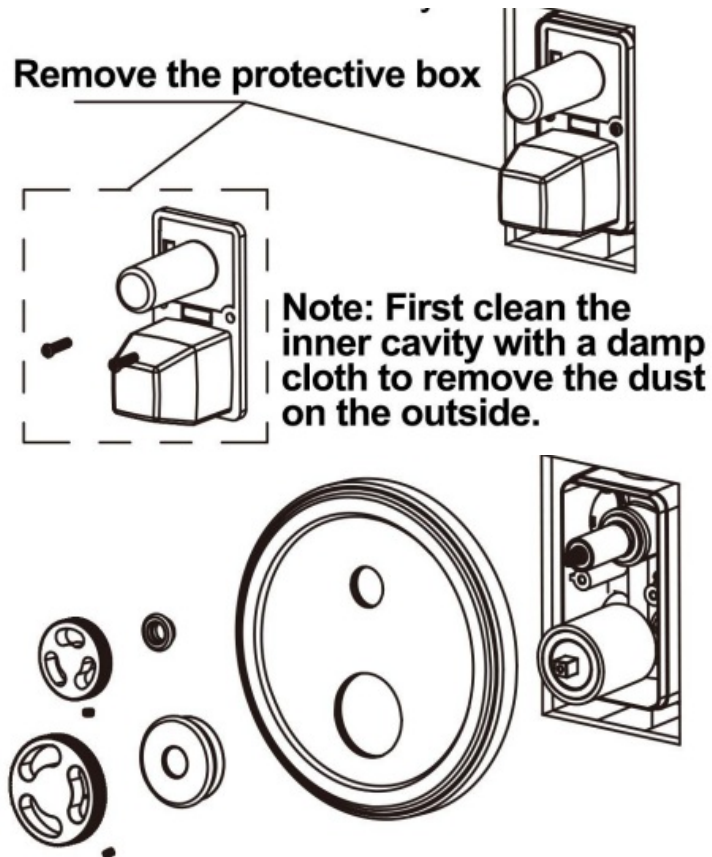


## 1. Waterway display map

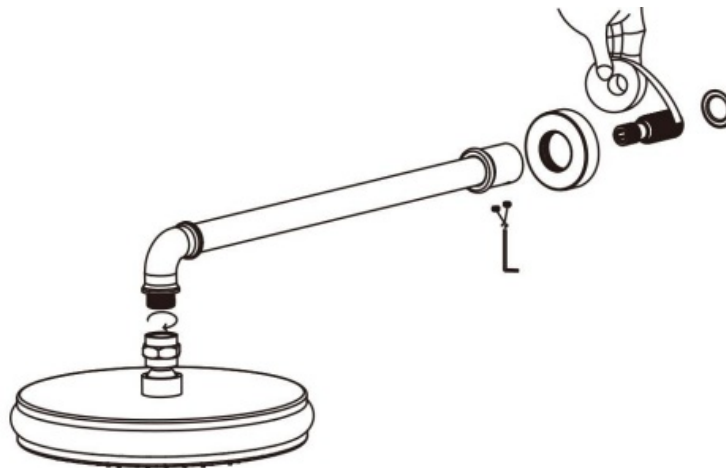
1. The minimum opening size of the wall box is 6.3"x3.94", the depth is 2.56"~2.83", and the depth is less than 2.83" is the best (Note: The depth dimension is the size of the tile attached to the wall. If it is installed on the wall, please reserve the appropriate tile thickness)
2. Please flush all pipes before installation.
3. Special attention must be paid to the hot and cold water pipes of the embedded box: the left side is hot water, and the right side is cold water.
4. After the water test is completed and it is confirmed that there is no leakage, cement packing can be used to seal the pipeline and the embedded box.



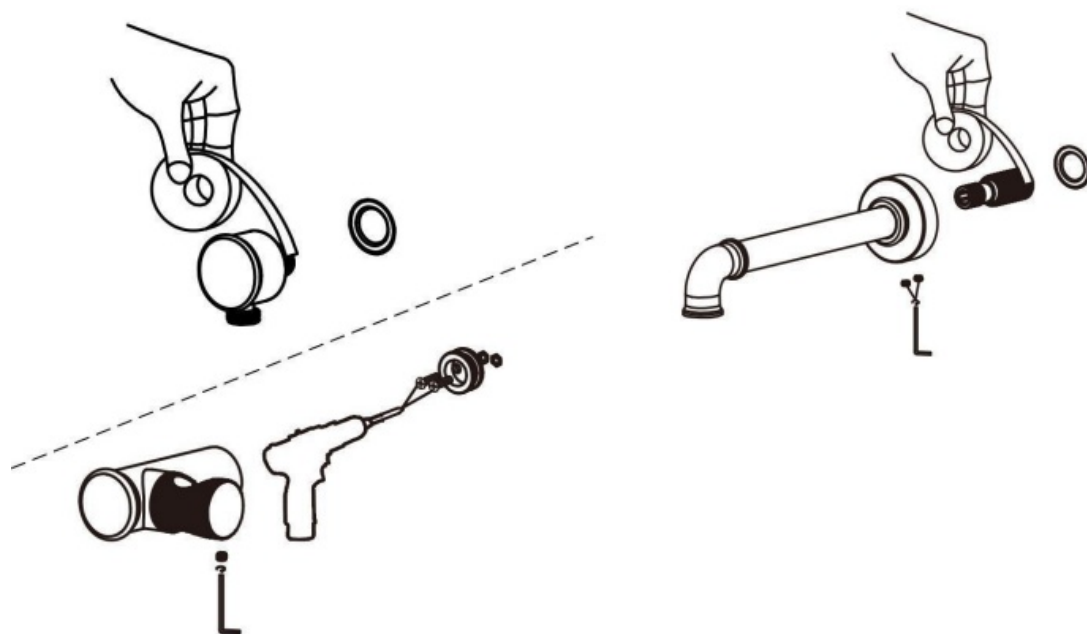
2. Install the main body.



3. Install the upper outlet pipe and the top shower head. (wrap the PTFE tape on the thread)

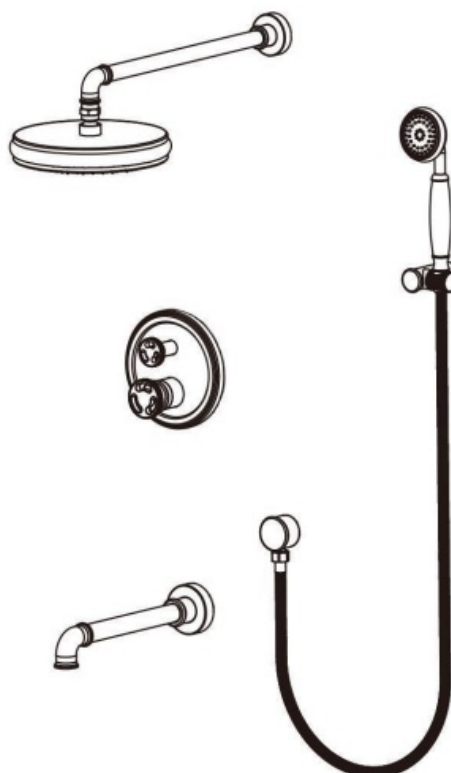


4. Install the hand shower bracket (wrap the PTFE tape on the thread) and the shower seat.



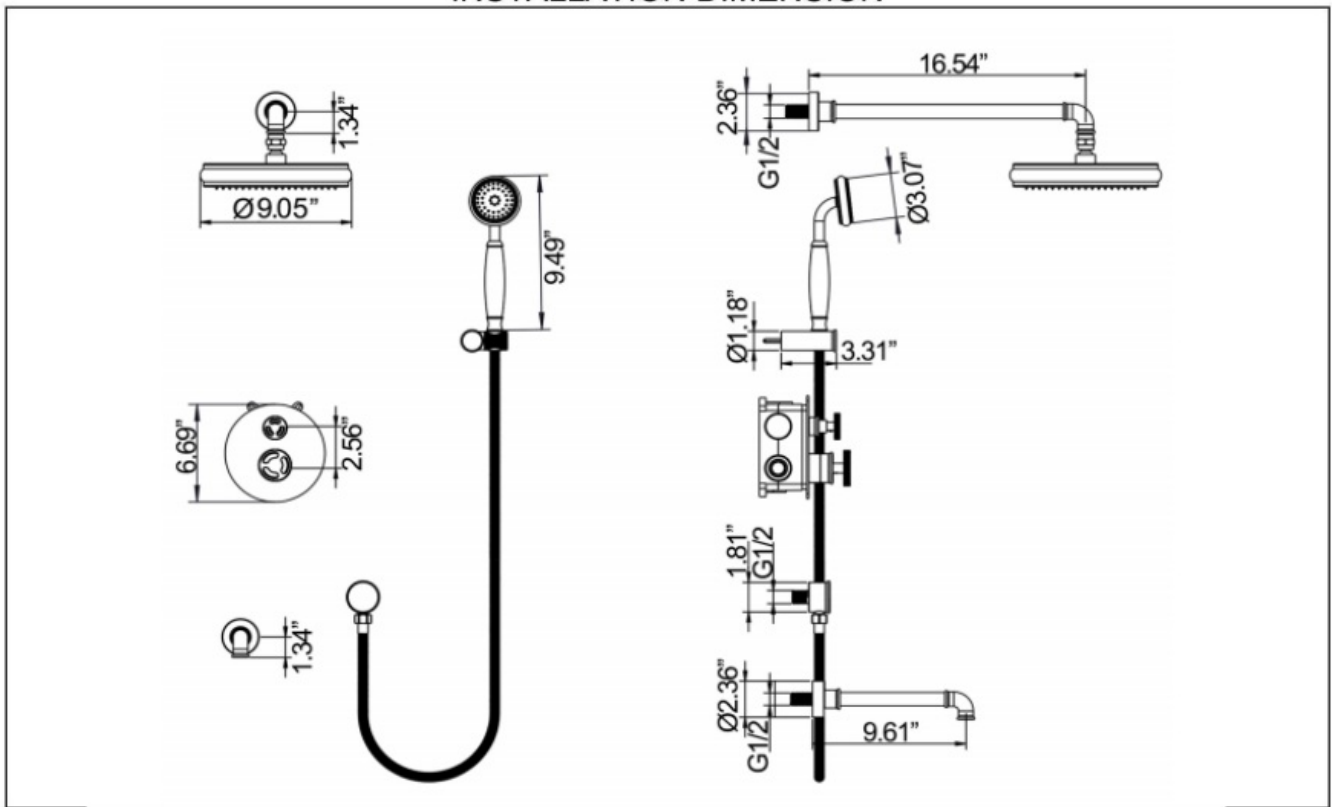
5. Install the spout.

6. Schematic diagram of product installation completed.



## INSTALLATION DIMENSION





## CLEANING CARE




In order to keep the appearance of the product clean, bright and of good performance, please take care of the product as follows;

1. Rinse with water only and dry with soft cotton cloth;
2. Use mild liquid and colorless glass cleaner to remove surface dirt and scale film, or use polish without abrasive effect.
3. Do not use abrasive detergent, polish, emery cloth, paper towel or scraper, etc.
4. Do not use acid cleaner, or cleaner and soap with insoluble granules etc.
5. In the process of use, mud may accumulate in the bubbler and make the water flow slow. The bubbler can be unscrewed, rinsed with water, and then installed back in place.



## Documents / Resources

	<p><a href="#">Mod-Land DSRH06H11MB53 Vintage Style 3 Function Shower System [pdf]</a> User Manual</p> <p>DSRH06H11MB53 Vintage Style 3 Function Shower System, DSRH06H11MB53, Vintage Style 3 Function Shower System, Style 3 Function Shower System, Function Shower System, Shower System</p>
---	--

## References

- [User Manual](#)

Mod-Land

DSRH06H11MB53, DSRH06H11MB53 Vintage Style 3 Function Shower System, Function Shower System, Mod-Land, Shower system, Style 3 Function Shower System, Vintage Style 3 Function Shower System

---

## Leave a comment

Your email address will not be published. Required fields are marked \*

Comment \*

Name

Email

Website

☐ Save my name, email, and website in this browser for the next time I comment.

**Post Comment**

**Search:**

e.g. whirlpool wrf535swhz

**Search**

[Manuals+](#) | [Upload](#) | [Deep Search](#) | [Privacy Policy](#) | [@manuals.plus](#) | [YouTube](#)

This website is an independent publication and is neither affiliated with nor endorsed by any of the trademark owners. The "Bluetooth®" word mark and logos are registered trademarks owned by Bluetooth SIG, Inc. The "Wi-Fi®" word mark and logos are registered trademarks owned by the Wi-Fi Alliance. Any use of these marks on this website does not imply any affiliation with or endorsement.