



mobilus WM Controller User Manual

[Home](#) » [mobilus](#) » mobilus WM Controller User Manual 

Contents

- [1 mobilus WM Controller](#)
- [2 GENERAL INFORMATION](#)
- [3 DESCRIPTION OF THE REMOTE CONTROL](#)
- [4 CONTENTS OF THE PACKAGE](#)
- [5 TECHNICAL PARAMETERS](#)
- [6 ASSEMBLY OF A HOLDING FIXTURE](#)
- [7 POWER SUPPLY](#)
- [8 THE INITIAL COMMISSIONING](#)
- [9 READING IN OTHER REMOTE](#)
- [10 CHANGE OF MOTOR'S OPERATION DIRECTION](#)
- [11 WARRANTY](#)
- [12 MAINTENANCE](#)
- [13 ENVIRONMENTAL PROTECTION](#)
- [14 Documents / Resources](#)
 - [14.1 References](#)
- [15 Related Posts](#)



mobilus WM Controller

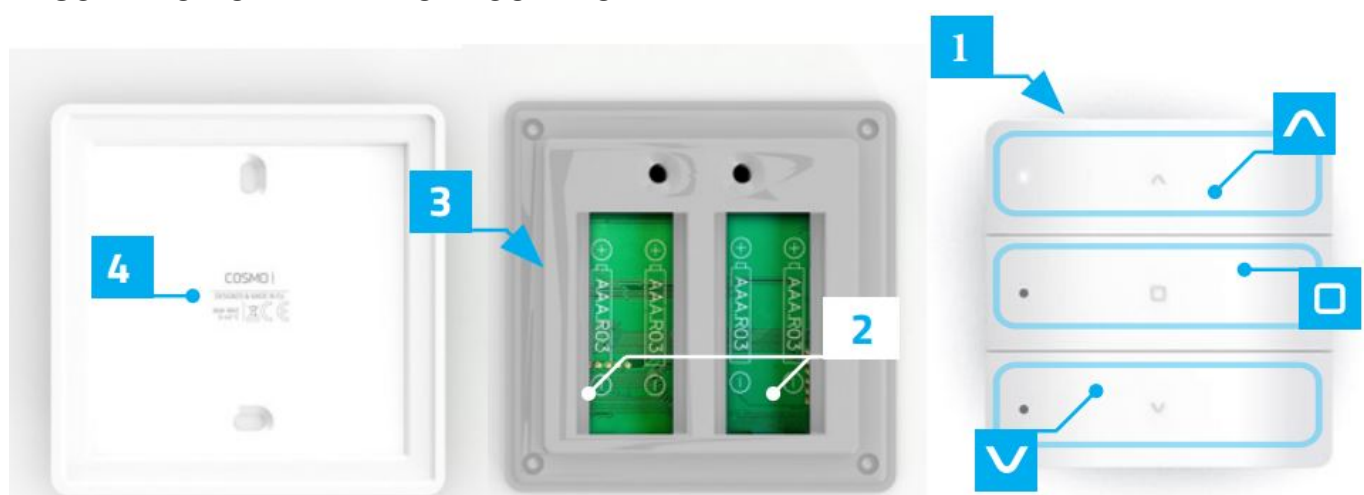


GENERAL INFORMATION




COSMO | WM is a 1-channel remote controller for wall mounting, designed for remote control receivers brand MOBILUS (radio remote controls for roller shutters, awnings, blinds /control modules for motors without radio communication module / ON / OFF modules).

- Support 1 channel.
- Support 1 channel group.
- One-directional communication
- Remote COSMO | WM – a remote control with mechanical keyboard.

DESCRIPTION OF THE REMOTE CONTROL



1. Front of the remote COSMO | WM.
2. Battery compartment 2 x AAA.
3. The upper, main housing of remote COSMO | WM
4. The rear housing flap mounted to the wall.

-  Control button / navigation area
-  UP. Control button / navigation area
-  DOWN. Control button / navigation area – STOP.

CONTENTS OF THE PACKAGE

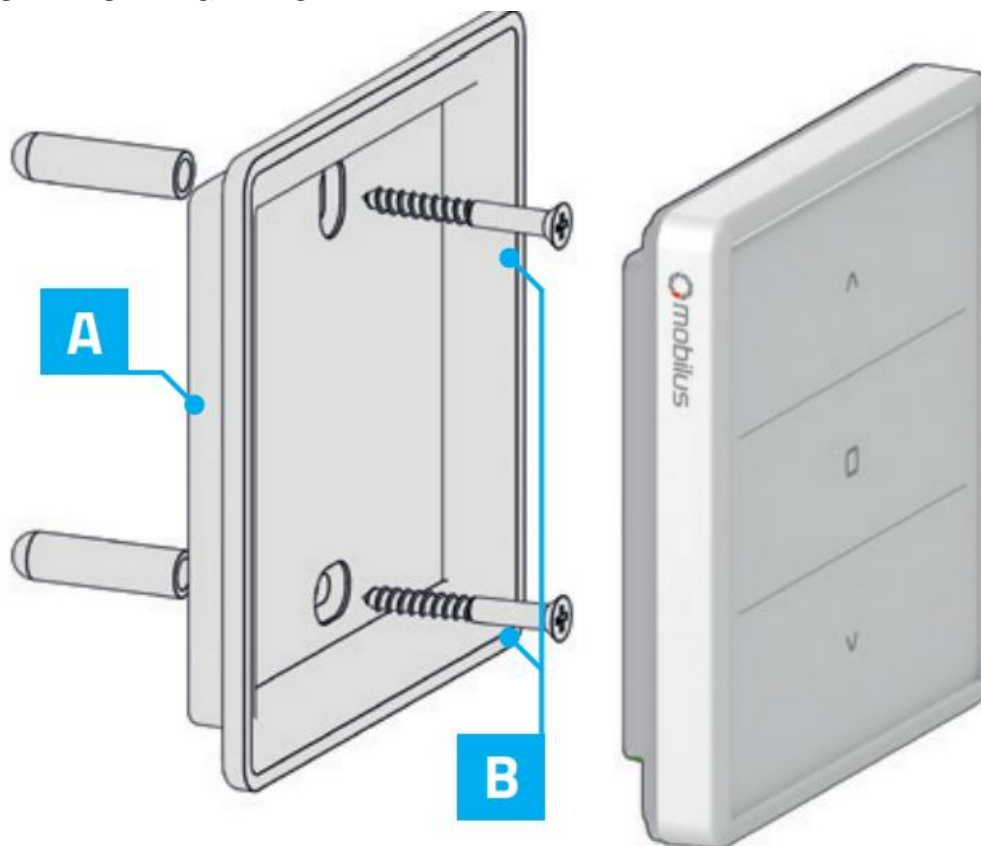
The packaging contains the following items:

- remote COSMO | WM,
- 4 AAA batteries in the remote control protected against discharging with a seal,
- user manual,
- fixing pins (2 pcs.).

TECHNICAL PARAMETERS

- **Radio protocol:** COSMO / COSMO 2WAY READY
- **Frequency:** 868 [MHz]
- Dynamic code
- FSK modulation
- The supply voltage 3,0 V DC .
- **Power source:** batteries 4 x AAA LR03.
- **Working temperature [°C]:** 0-40°C.
- **Display:** touch screen with illuminated fields.
- **Range in building:** 40 [m]. The range of the radio signal depends on the type of construction, used materials and placement of units. The transmission of the radio signal in different conditions is as follows: brick wall 60-90%, reinforced concrete 2,060%, wooden structures with sheets of plasterboard 80-95%, glass 80-90%, metal walls 0-10%.
- **Buzzer** – tone generator.
- **Dimensions:** 80 x 80 x 20 mm.

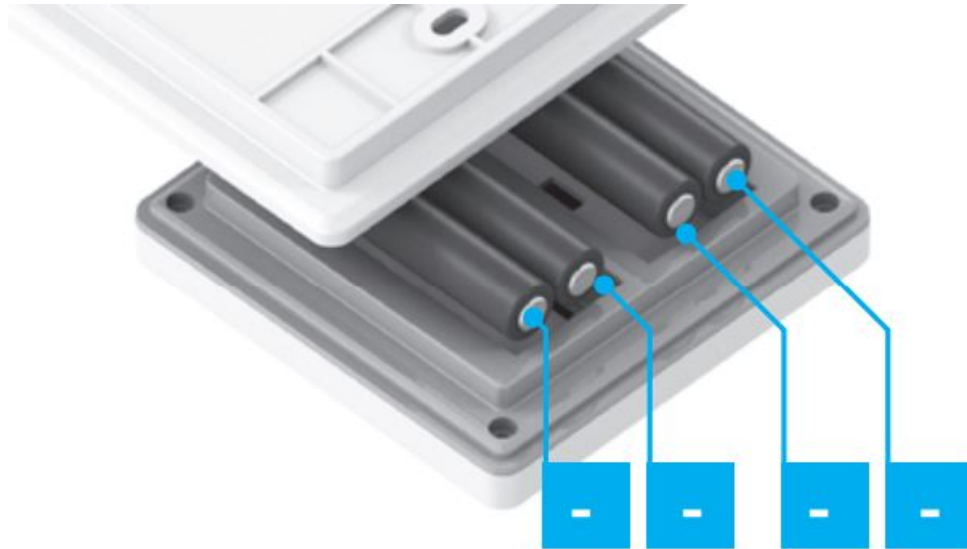
ASSEMBLY OF A HOLDING FIXTURE



Elements of wall handle:

- rear housing of remote – A,
 - anchors with screws – B.
1. Determine the position where the rear flap of housing will be located (easy access, no running power cables, pipes, reinforcement of walls, etc.).
 2. Determine the points on the wall so that the rear housing after assembly will adhere to the wall and will be mounted perpendicular to the ground.
 3. Drill the holes and place the assembly anchors.
 4. Attach the handle and tighten it to the wall.
 5. Place front housing of the remote control to screwed flip.

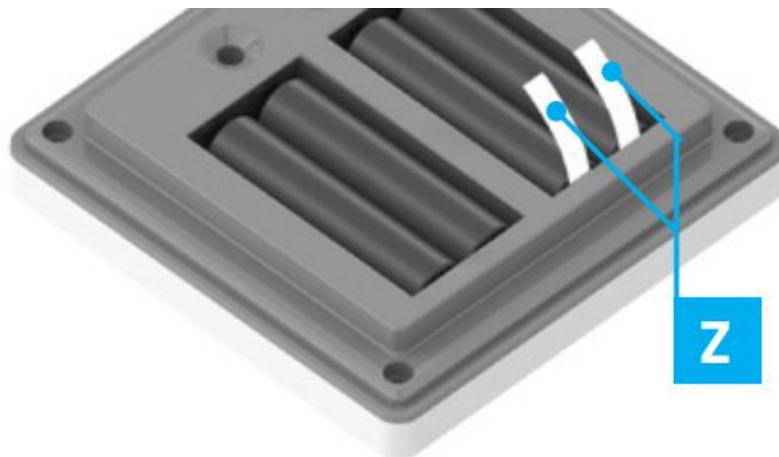
POWER SUPPLY



The device is powered by four batteries AAA LR003.

In order to change the battery, disconnect the upper housing remote from parts mounted on the wall.

THE INITIAL COMMISSIONING



The device is factory protected against battery wearing. To the deprotection:

1. Open the battery cover
2. Remove the seal Z, which protects the batteries from discharging (marked in white).

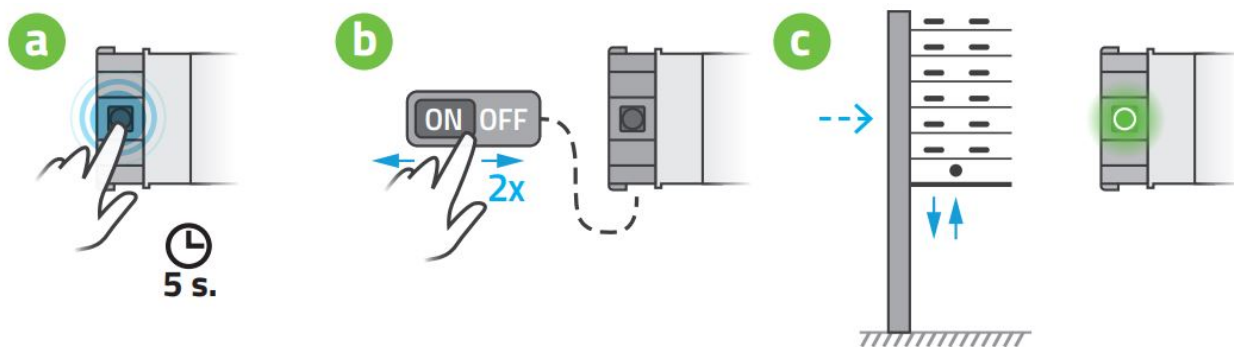
READING OF REMOTE INTO THE MOTOR'S MEMORY

WARNING! Do not program the remote control when the shutter is in the extreme position (top or bottom). Each program and changes of motor's operation directions are confirmed by two micro-movements of the driver. Failure to comply with these rules may result in damage the blinds (inhaled by the housing).



1. Enter MOBILUS motor, serie R in the PROGRAMMING MODE OF MASTER REMOTE:

- press for 5 seconds PROGRAMMING BUTTON in the motor – Fig. 8.2a;
- or double turn off and turn on the power supply of the motor – Fig. 8.2b;

The confirmation of properly performed operation will be two micro-movements of the motor drive – Fig. 8.2c.



WARNING! The first remote control readed into the receiver is a remote control MASTER. It allows you to operate motor and enter it in the PROGRAM MODE OF OTHER REMOTES.

- On the remote control simultaneously press  and  – Fig. 8.3a. The LED's will flash (two upper rows) – Fig. 8.3b. Hold the buttons until the motor driver will perform two micro-movements. The remote control has been readed into the motor.

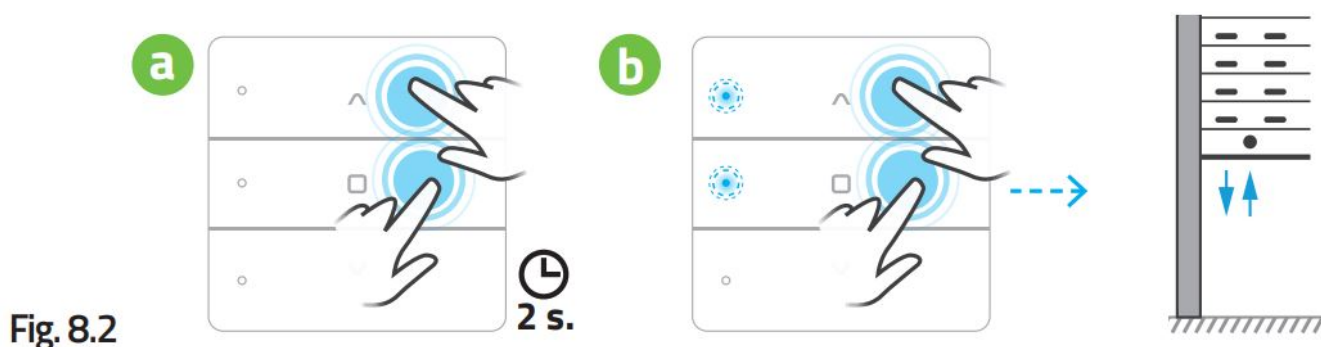


Fig. 8.2

READING IN OTHER REMOTE

- On the MASTER remote control simultaneously press  the  and – Fig. 9.1a. The LED's will flash (two upper rows). Hold the buttons until the motor driver will perform two micro-movements confirming the input of the motor in the PROGRAM MODE – Fig. 9.1b.

- Fig. 9.1b.

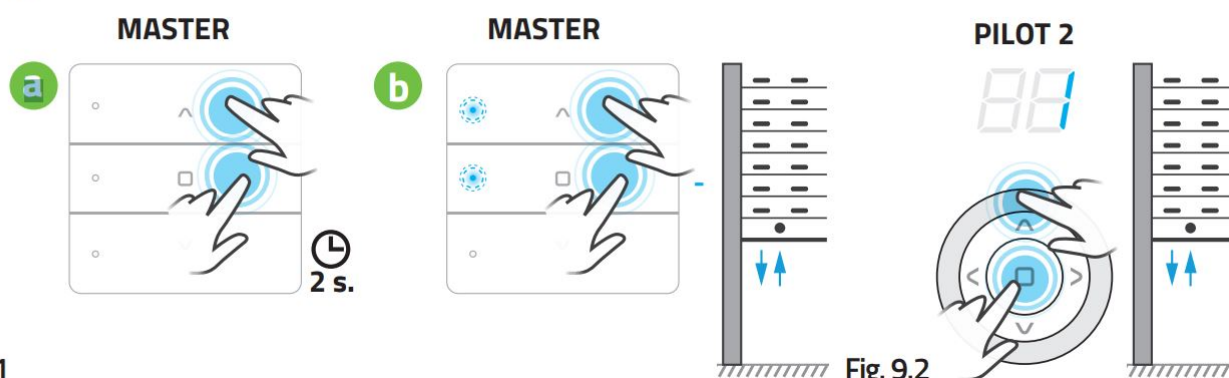






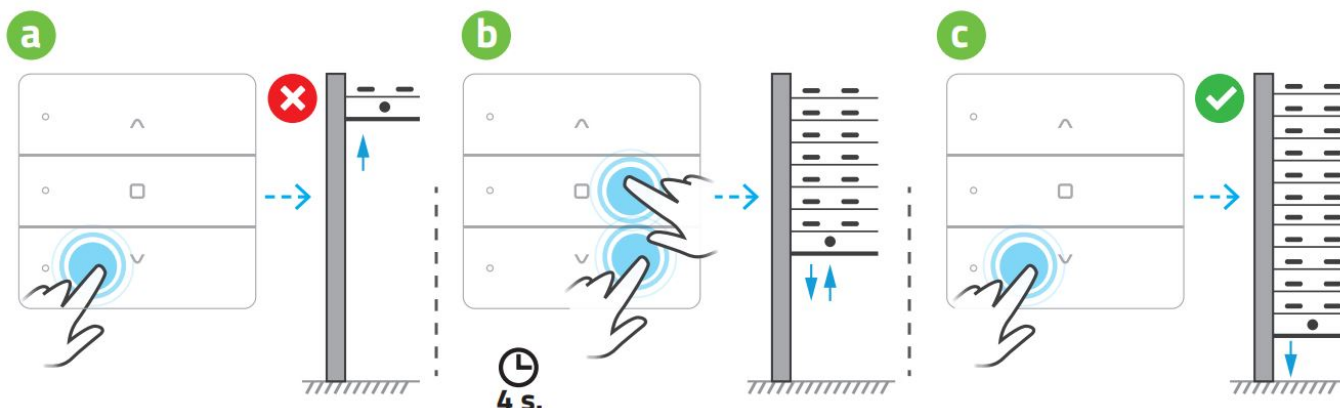
Fig. 9.1

Fig. 9.2

- On the second remote control, you want to program, press  the  and . Hold the buttons until the motor driver will perform two micro-movements – Fig. 9.2. Another remote was loaded into the motor. Within 20 sec. you can proceed to load the next remote. However, if no action of programming at this time doesn't happen, motor automatically returns to the OPERATING MODE. You can expedite return to the OPERATING MODE manually using the remote control MASTER. In this case, press the button on the 

and and  hold more than 5 seconds. In both cases, return to the OPERATING MODE will be confirmed by two micro-movements of the driver.

CHANGE OF MOTOR'S OPERATION DIRECTION



After loading the remote control to the motor check that the buttons UP and DOWN correspond to lifting and lowering the blinds. If not, press simultaneously buttons STOP and DOWN and hold them for about 4 seconds on the remote control any loaded to the motor. The confirmation of correctly performed operation are two micro-movements of the driver. **WARNING !** You can change the direction of the work of motor for MOBILUS drives with electronic limit switches only before setting the upper and lower limit switches. You can change the direction of work for the MOBILUS motors with mechanical limit switches at any time.

WARRANTY

The manufacturer guarantees correct device functioning. The manufacturer also agree to repair or replace device damaged if the damage results from defects in materials and construction.

The warranty is valid for 24 months from the date of purchase under the following conditions:

- Installation was made by a person authorized in accordance with the manufacturer's instructions.
- Seals haven't been breached and unauthorized design changes haven't been made.
- The device was operated as intended by the user manual.
- Damage is not a result of the improperly performed electrical installation or any atmospheric phenomena.
- The manufacturer is not responsible for damage resulting from misuse or mechanical damage.
- In case of failure the device should be provided for repair with proof of purchase.

Defects found during the warranty period will be removed free for no longer than 14 working days from the date of acceptance of device for repair. The manufacturer MOBILUS MOTOR Sp. z o.o. carries on warranty repairs. If you have any questions, please contact your dealer (please provide the following information: event description, description of the error, the conditions under which the accident occurred).

MAINTENANCE

1. For cleaning, use a soft cloth (eg. microfiber), moistened with water. Then wipe dry.
2. Do not use chemicals.
3. Avoid using in soiled and dusty environments.
4. Do not use the device at temperatures higher or lower than the declared range.
5. Do not open the device – otherwise the warranty shall be lost.
6. The device is sensitive to dropping, throwing.

ENVIRONMENTAL PROTECTION

This appliance is marked according to the European Directive on Waste Electrical and Electronic Equipment (2002/96/EC) and further amendments. By ensuring this product is disposed of correctly, you will help to prevent potential negative consequences for the environment and human health, which could otherwise be caused by inappropriate waste handling of this product. The symbol on the product, or the documents accompanying the product, indicates that this appliance may not be treated as household waste. It shall be handed over to the applicable collection point for the waste electrical and electronic equipment for recycling purpose. For more information about recycling of this product, please contact your local authorities, your household waste disposal service or the shop where you purchased the product.


MOBILUS MOTOR Spółka z o.o.

ul. Miętowa 37, 61-680 Poznań, PL

tel. +48 61 825 81 11, fax +48 61 825 80 52 VAT NO. PL9721078008

www.mobilus.pl

Documents / Resources

 <p>User manual of COSMO WM controller.</p> <p>Version: 1.0.00, 11.10.17</p> <p>www.mobilus.pl</p>	<p>mobilus WM Controller [pdf] User Manual WM Controller, WM, Controller</p>
--	--

References

-  [Strona główna - Mobilus Motor](#)