



mobilus COSMO WT Lite Controller User Manual

[Home](#) » [mobilus](#) » mobilus COSMO WT Lite Controller User Manual 

Contents

- [1 mobilus COSMO WT Lite Controller](#)
- [2 GENERAL INFORMATION](#)
- [3 DESCRIPTION OF THE REMOTE CONTROL](#)
 - [3.1 CONTENTS OF THE PACKAGE](#)
- [4 TECHNICAL PARAMETERS](#)
 - [4.1 ASSEMBLY OF A HOLDING FIXTURE](#)
 - [4.2 POWER SUPPLY](#)
 - [4.3 WT LITE REMOTE CONTROL OPERATION | MOTIONS](#)
 - [4.4 WT LITE REMOTE CONTROL OPERATION | ACTIVATING THE DISPLAY](#)
- [5 READING OF REMOTE INTO THE MOTOR'S MEMORY](#)
 - [5.1 READING IN OTHER REMOTE](#)
 - [5.2 CHANGE OF MOTOR'S OPERATION DIRECTION](#)
 - [5.3 TRANSMISSION PROTOCOL SWITCHING COSMO – COSMO | 2WAY](#)
 - [5.4 CHECK THE ACTIVE COMMUNICATION MODE](#)
- [6 WARRANTY](#)
- [7 MAINTENANCE](#)
- [8 ENVIRONMENTAL PROTECTION](#)
- [9 Documents / Resources](#)
 - [9.1 References](#)
- [10 Related Posts](#)



mobilus COSMO WT Lite Controller

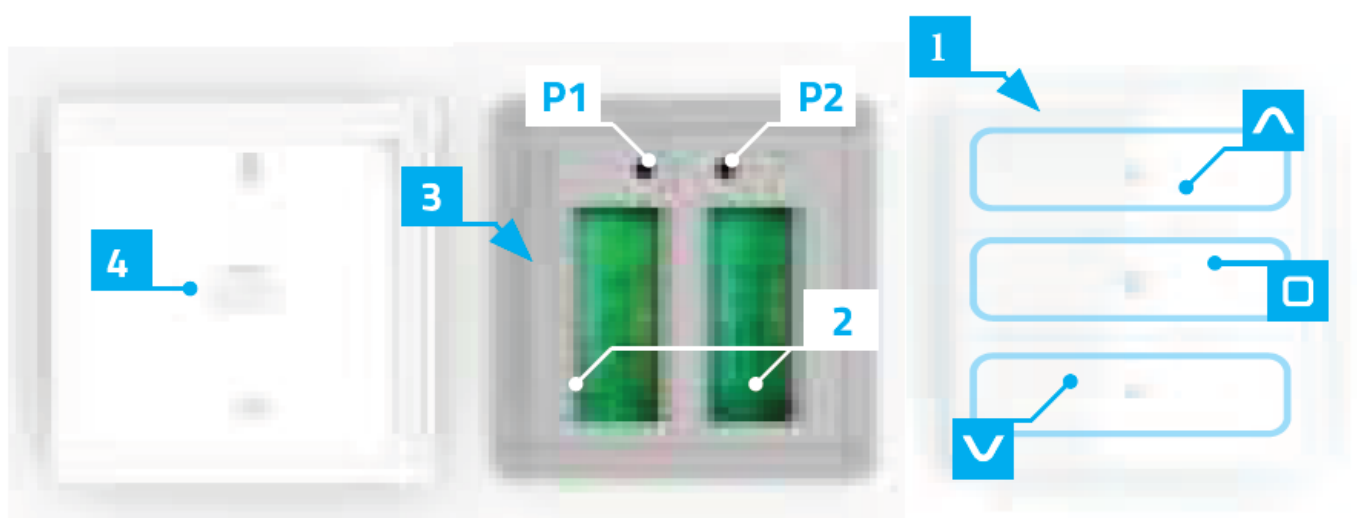


GENERAL INFORMATION

COSMO | WT is a 1-channel remote controller for wall mounting, designed for remote control receivers brand MOBILUS (radio remote controls for roller shutters, awnings, blinds /control modules for motors without radio communication module / ON / OFF modules).

- Support 1 channel.
- Support 1 channel group.
- One-directional communication
- Remote COSMO | WT Lite – a remote control with touch screen keyboard.

DESCRIPTION OF THE REMOTE CONTROL



1. The touch screen of remote control COSMO | WT Lite.
2. Battery compartment 2 x AAA.
3. The upper, main housing of remote COSMO | WT Lite.
4. The rear housing flap mounted to the wall.

- Control button / navigation area – UP.
- Control button / navigation area – DOWN.
- Control button / navigation area – STOP.
- P1 Function button 1.
- P2 Function button 2.

CONTENTS OF THE PACKAGE

The packaging contains the following items:

- remote COSMO | WT Lite,
- 4 AAA batteries in the remote control protected against discharging with a seal,
- user manual,
- fixing pins (2 pcs.).

TECHNICAL PARAMETERS

- Radio protocol: COSMO / COSMO 2WAY READY
- Frequency: 868 [MHz]
- Dynamic code
- FSK modulation
- The supply voltage 3,0 V DC .
- Power source: batteries 4 x AAA LR03.
- Working temperature [°C]: 0-40°C.
- Display: touch screen with illuminated fields.
- Range in building: 40 [m]. The range of the radio signal depends on the type of construction, used materials and placement of units. The transition of the radio signal in different conditions is as follows: brick wall 60-90%, reinforced concrete 2,060%, wooden structures with sheets of plasterboard 80-95%, glass 80-90%, metal walls 0-10%.
- Buzzer – tone generator.
- Dimensions: 80 x 80 x 20 mm.

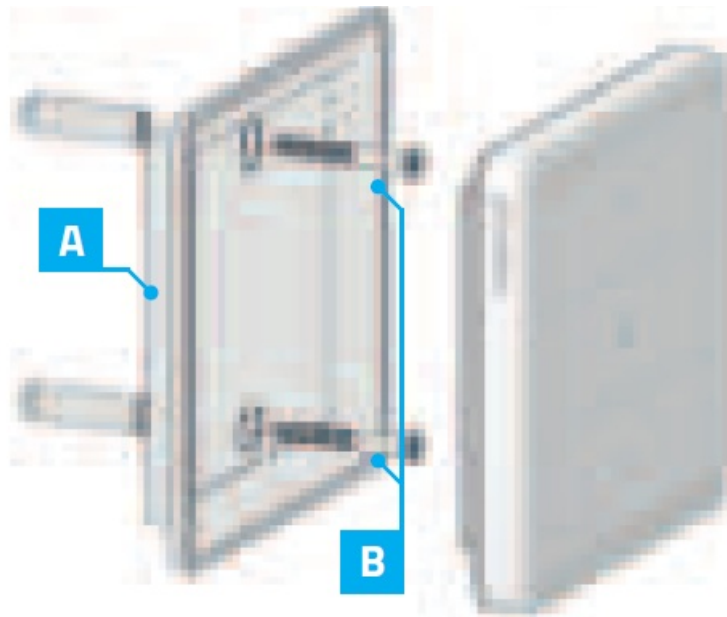
ASSEMBLY OF A HOLDING FIXTURE

Elements of wall handle:

- rear housing of remote – A,
- anchors with screws – B.

1. Determine the position where the rear flap of housing will be located (easy access, no running power cables, pipes, reinforcement of walls, etc.).
2. Determine the points on the wall so that the rear housing after assembly will adhere to the wall and will be mounted perpendicular to the ground.
3. Drill the holes and place the assembly anchors (distance between the holes 36 mm, diameter 3.5 mm).

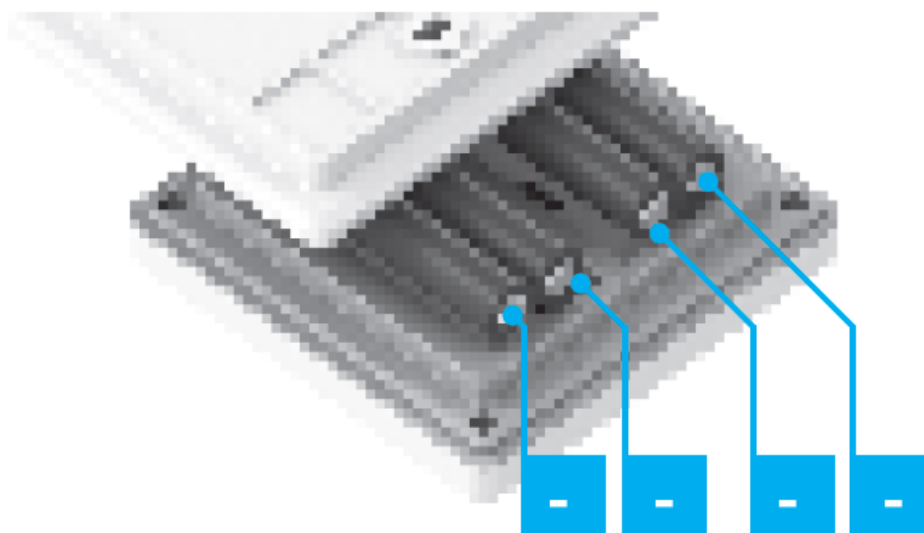
4. Attach the handle and tighten it to the wall.
5. Place front housing of the remote control to screwed flip.



POWER SUPPLY

The device is powered by four batteries AAA LR003.

In order to change the battery, disconnect the upper housing remote from parts mounted on the wall.

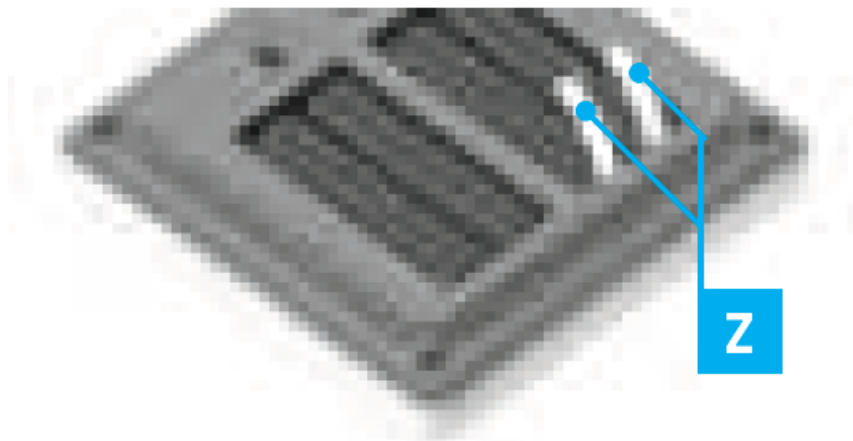


THE INITIAL COMMISSIONING

The device is factory protected against battery wearing.

To the deprotection:

1. Open the battery cover
2. Remove the seal Z, which protects the batteries from discharging (marked in white).



WT LITE REMOTE CONTROL OPERATION | MOTIONS

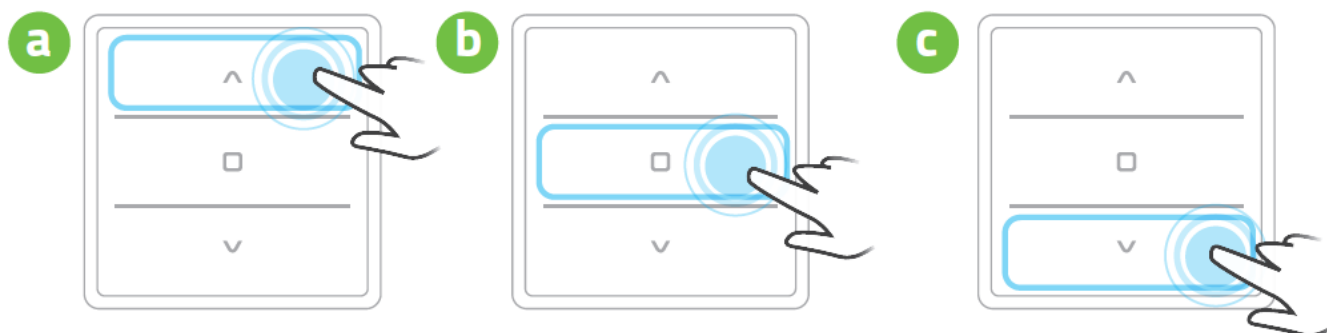
COSMO | WT Lite remote allows the user to control touch.

The user issues commands by touching with a finger on the remote control screen. Wake up the remote control by touching the remote control screen.

WT LITE REMOTE CONTROL OPERATION | ACTIVATING THE DISPLAY

Remote control COSMO | WT Lite in order to save energy introduces a screen in stand-by mode. Its re-activation can be done in two ways:

1. Activation by touching the finger in the control buttons field. The pilot will send to the receiver an order corresponding to the area on the screen- Fig. 9.2.



READING OF REMOTE INTO THE MOTOR'S MEMORY

WARNING! Do not program the remote control when the shutter is in the extreme position (top or bottom). Each program and changes of motor's operation directions are confirmed by two micro-movements of the driver. Failure to comply with these rules may result in damage the blinds (inhaled by the housing).

1. Enter MOBILUS motor, series R in the PROGRAMMING MODE OF MASTER REMOTE:
 - press for 5 seconds PROGRAMMING BUTTON in the motor – Fig. 10.2a;
 - or double turn off and turn on the power supply do the motor – Fig. 10.2b;
2. The confirmation of properly performed operation will be two micro-movements of the motor drive – Fig. 10.2c.

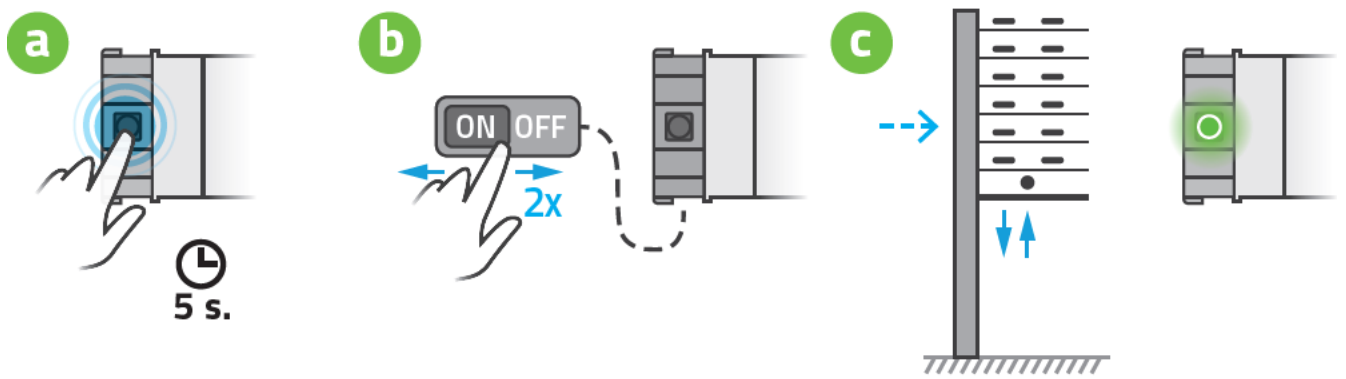


Fig. 10.2

- On the remote control simultaneously press and – Fig. 10.3a. The LED's will flash (two upper rows) – Fig. 10.3b. Hold the buttons until the motor driver will perform two micro-movements. The remote control has been reader into the motor.

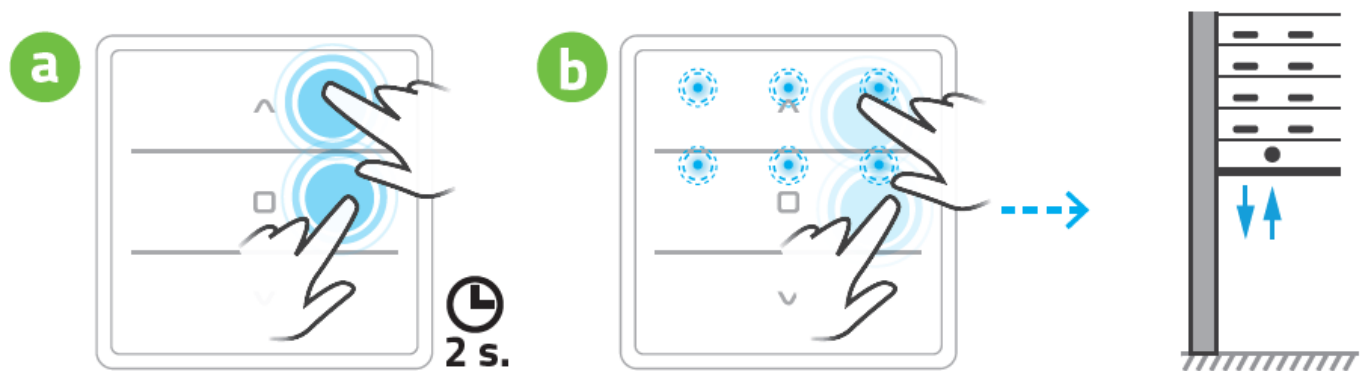


Fig. 10.3

READING IN OTHER REMOTE

WARNING! Operation: READING THE NEXT REMOTE CONTROL is only possible in the MODE 1 of remote control (motions control is off).

- On the MASTER remote control simultaneously press the and – Fig. 11.1a. The LED's will flash (two upper rows). Hold the buttons until the motor driver will perform two micro-movements confirming the input of the motor in the PROGRAM MODE – Fig. 11.1b.

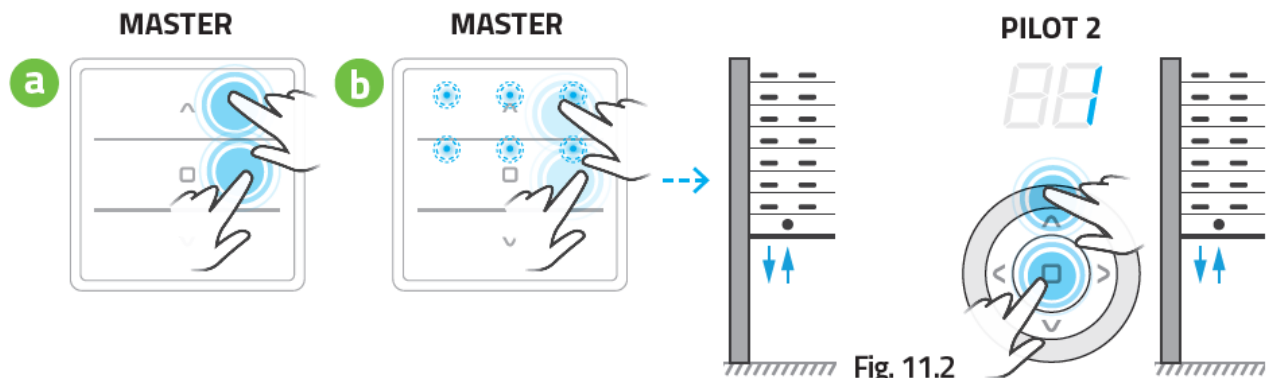


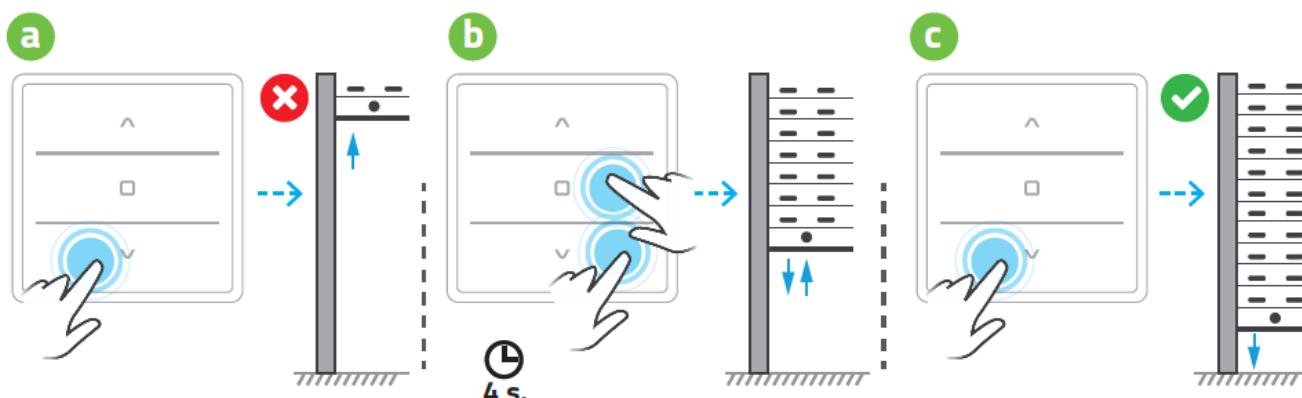
Fig. 11.2

Fig. 11.1

- On the second remote control, you want to program, press the and . Hold the buttons until the motor driver will perform two micro-movements – Fig. 11.2. Another remote was loaded into the motor.
Within 20 sec. you can proceed to load the next remote. However, if no action of programming at this time doesn't happen, motor automatically returns to the OPERATING MODE. You can expedite return to the

OPERATING MODE manually using the remote control MASTER. In this case, press the button on the and and hold more than 5 seconds. In both cases, return to the OPERATING MODE will be confirmed by two micro-movements of the driver.

CHANGE OF MOTOR'S OPERATION DIRECTION



After loading the remote control to the motor check that the buttons UP and DOWN correspond to lifting and lowering the blinds. If not, press simultaneously buttons STOP and DOWN and hold them for about 4 seconds on the remote control any loaded to the motor. The confirmation of correctly performed operation are two micro-movements of the driver.

WARNING ! You can change the direction of the work of motor for MOBILUS drives with electronic limit switches only before setting the upper and lower limit switches. You can change the direction of work for the MOBILUS motors with mechanical limit switches at any time.

TRANSMISSION PROTOCOL SWITCHING COSMO – COSMO | 2WAY

Remote control COSMO | WT Lite works in latest version of radio communication COSMO | 2WAY Ready.

If you need to change the mode to an older version (for example, if you purchase a new remote control for older COSMO radio tubular motors), follow these instructions:

1. Activate the remote control.
2. Press and hold the P1 + P2 function buttons on the back of the controller for 20 seconds at the same time. – Fig. 13.
3. When the LEDs at the bottom of the front panel light up, the corresponding communication standard is activated:

color red – the latest radio communication COSMO | 2WAY Ready

blue color – previous communication COSMO



Fig. 13

Fig. 13

CHECK THE ACTIVE COMMUNICATION MODE

To quickly identify the active communication mode:

1. Activate the remote control.
2. Press and hold the STOP button for about 5 seconds – Fig. 14.
3. The LEDs in the lower part of the front panel shall light up indicating:
color red – the latest radio communication COSMO | 2WAY Ready
blue colour – previous communication COSMO



Fig. 14

WARRANTY

The manufacturer guarantees correct device functioning. The manufacturer also agree to repair or replace device damaged if the damage results from defects in materials and construction.

The warranty is valid for 24 months from the date of purchase under the following conditions:

- Installation was made by a person authorized in accordance with the manufacturer's instructions.
- Seals haven't been breached and unauthorized design changes haven't been made.
- The device was operated as intended by the user manual.
- Damage is not a result of the improperly performed electrical installation or any atmospheric phenomena.
- The manufacturer is not responsible for damage resulting from misuse or mechanical damage.
- In case of failure the device should be provided for repair with proof of purchase.

Defects found during the warranty period will be removed free for no longer than 14 working days from the date of acceptance of device for repair. The manufacturer MOBILUS MOTOR Sp. z o.o. carries on warranty repairs. If you have any questions, please contact your dealer (please provide the following information: event description, description of the error, the conditions under which the accident occurred).

MAINTENANCE

1. For cleaning, use a soft cloth (eg. microfiber), moistened with water. Then wipe dry.
2. Do not use chemicals.
3. Avoid using in soiled and dusty environments.
4. Do not use the device at temperatures higher or lower than the declared range.
5. Do not open the device – otherwise the warranty shall be lost.
6. The device is sensitive to dropping, throwing.

ENVIRONMENTAL PROTECTION

This appliance is marked according to the European Directive on Waste Electrical and Electronic Equipment (2002/96/EC) and further amendments. By ensuring this product is disposed of correctly, you will help to prevent potential negative consequences for the environment and human health, which could otherwise be caused by inappropriate waste handling of this product. The symbol on the product, or the documents accompanying the product, indicates that this appliance may not be treated as household waste. It shall be handed over to the applicable collection point for the waste electrical and electronic equipment for recycling purpose. For more information about recycling of this product, please contact your local authorities, your household waste disposal service or the shop where you purchased the product.


MOBILUS MOTOR Spółka z o.o.

ul. Miętowa 37, 61-680 Poznań, PL

tel. +48 61 825 81 11, fax +48 61 825 80 52 VAT NO. PL9721078008

Wersja 1.2ENG, 170921

Documents / Resources

| | |
|---|---|
|  | <p>mobilus COSMO WT Lite Controller [pdf] User Manual COSMO WT Lite Controller, COSMO WT Controller, Lite Controller, COSMO WT Lite, COSMO WT</p> |
|---|---|

References

-  [Strona główna - Mobilus Motor](#)