



## MobileDemand Scanner Combo Bundle for Surface Go Installation Guide

[Home](#) » [MobileDemand](#) » MobileDemand Scanner Combo Bundle for Surface Go Installation Guide 

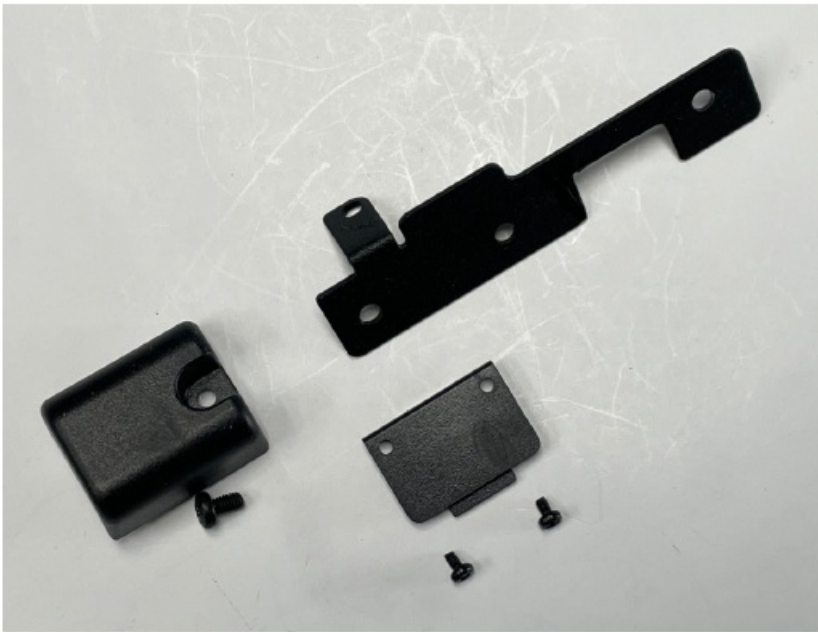
### Contents

- [1 Scanner Combo Bundle for Surface Go](#)
- [2 Documents / Resources](#)
- [3 Related Posts](#)

### Scanner Combo Bundle for Surface Go

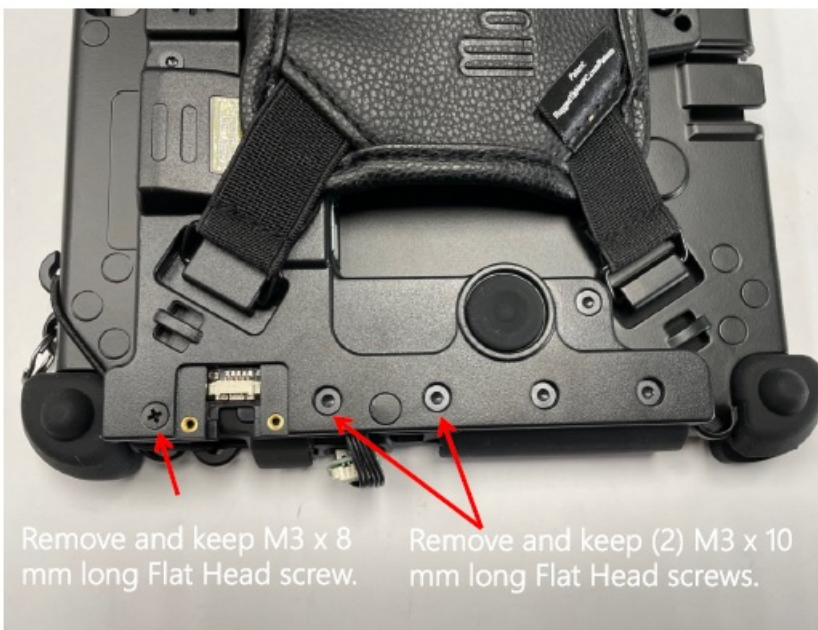


Surface Go Scanner Installation



1. Shown are the parts included in the Scanner Only Kit SG-SCN-ONLY-KIT-DFS.

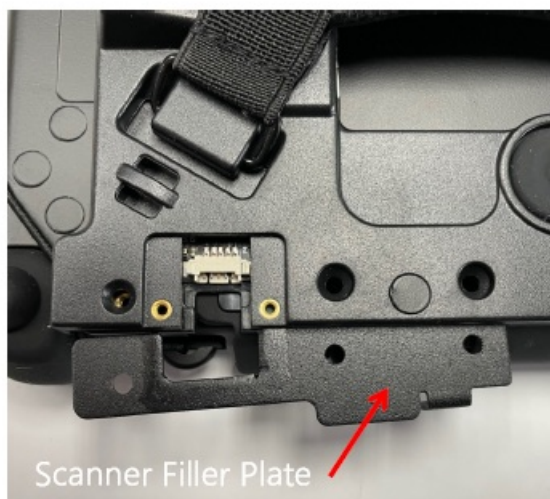
2. Install Tablet into the Case per instructions included with Case.  
Make sure the Scanner USB PCB does not extend into Case.



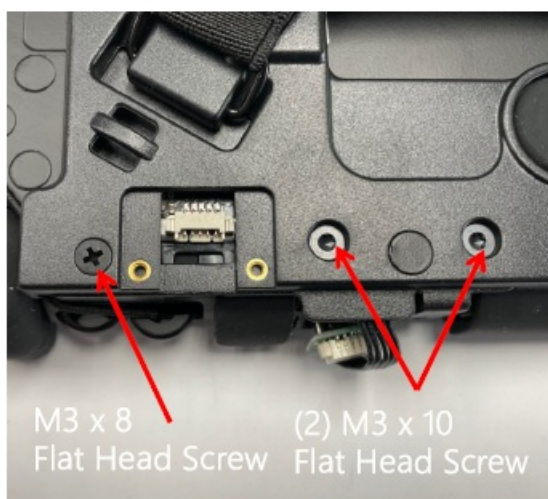
Remove and keep M3 x 8  
mm long Flat Head screw.

Remove and keep (2) M3 x 10  
mm long Flat Head screws.

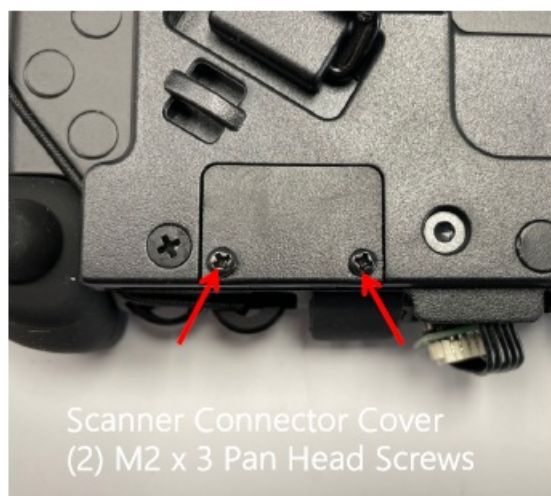
3. Remove M3 x 8 & (2) M3 x 10 Flat Head screws.



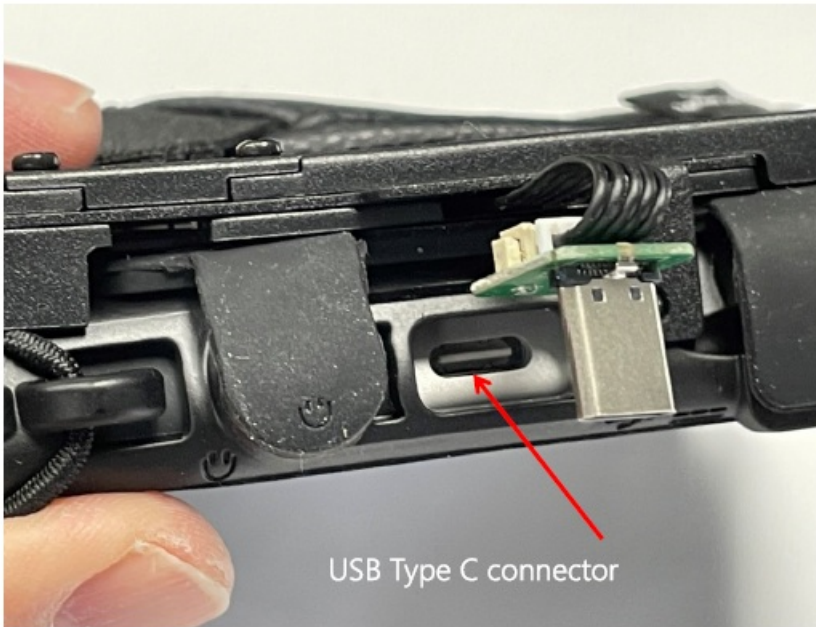
4. Install the Scanner Filler Plate.



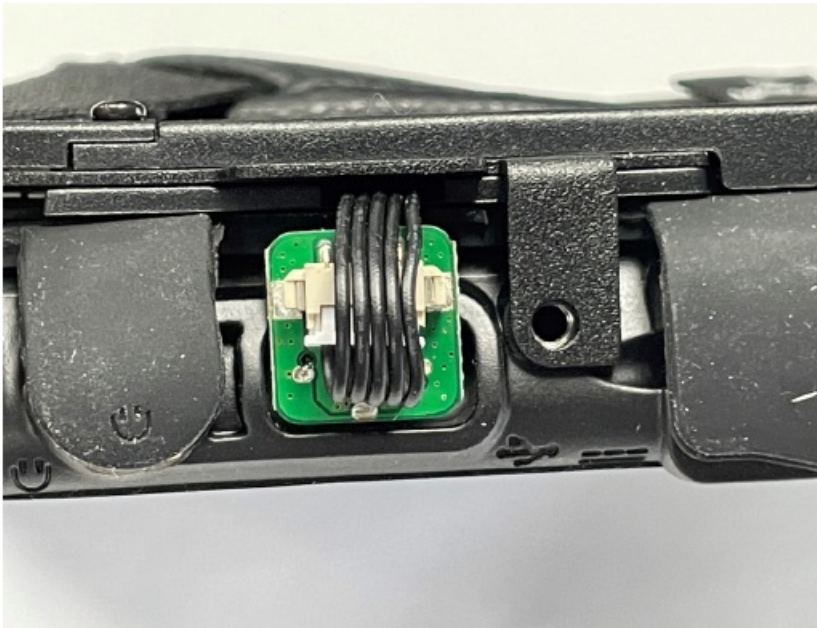
5. Re-install the M3 x 8 and (2) M3 x 10 Flat Head screws.



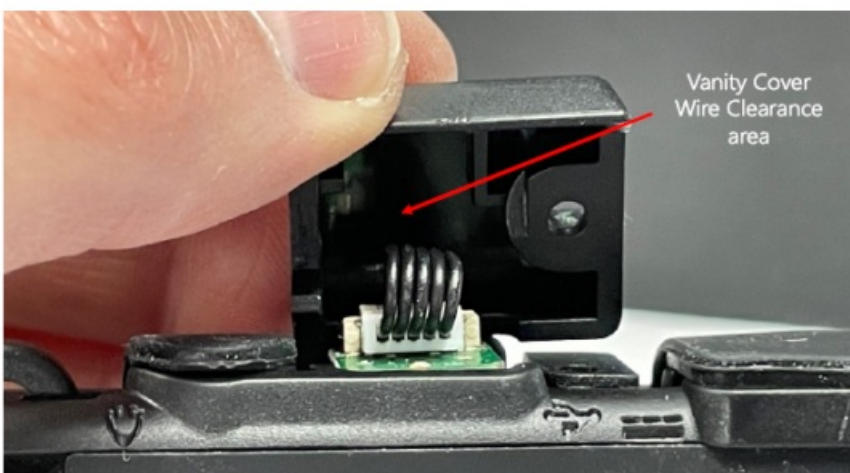
6. Install the Scanner Connector Cover using (2) M2 x 3 Pan Head screws.



7. Locate USB Type C connector in tablet.



8. Plug USB Type C PCB into USB Type C connector as shown.





9. Install Vanity Cover over USB Type C PCB. Ensure wires are aligned in Vanity Cover clearance area so that wires are not pinched.



10. Install the M3 x 5 Pan Head screw.



11. Vanity Cover should look like this when properly installed.

## Documents / Resources



[MobileDemand Scanner Combo Bundle for Surface Go](#) [pdf] Installation Guide  
Scanner Combo Bundle for Surface Go