

MOBILE XR
Hub with MicroSD
for Console



Mobile XR Hub with MicroSD for Console User Guide

[Home](#) » [Mobile XR](#) » Mobile XR Hub with MicroSD for Console User Guide 

Contents

- [1 Mobile XR Hub with MicroSD for Console](#)
- [2 Specifications](#)
- [3 Connecting the Adapter](#)
- [4 Micro SD Card Usage](#)
- [5 Data Transfer and Display](#)
- [6 Charging](#)
- [7 Frequently Asked Questions](#)
- [8 Documents / Resources](#)
 - [8.1 References](#)

MOBILE XR

Mobile XR Hub with MicroSD for Console

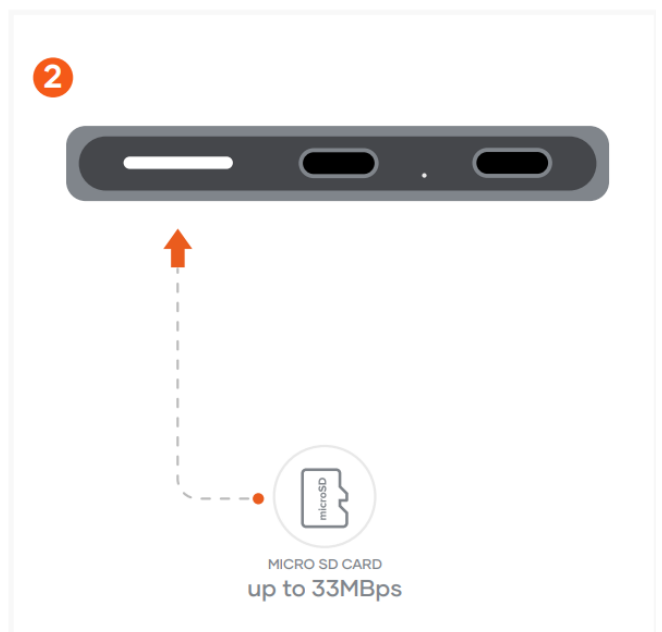


Specifications

- Data Transfer Speed: up to 10Gbps
- Micro SD Card Speed: up to 33MBps
- Display Resolution: up to 4K@60Hz
- Charging Power: up to 100W
- Data Transfer Speed (Display): up to 480Mbps

Connecting the Adapter

Connect the adapter to a compatible host device. The LED indicator will turn on once connected.

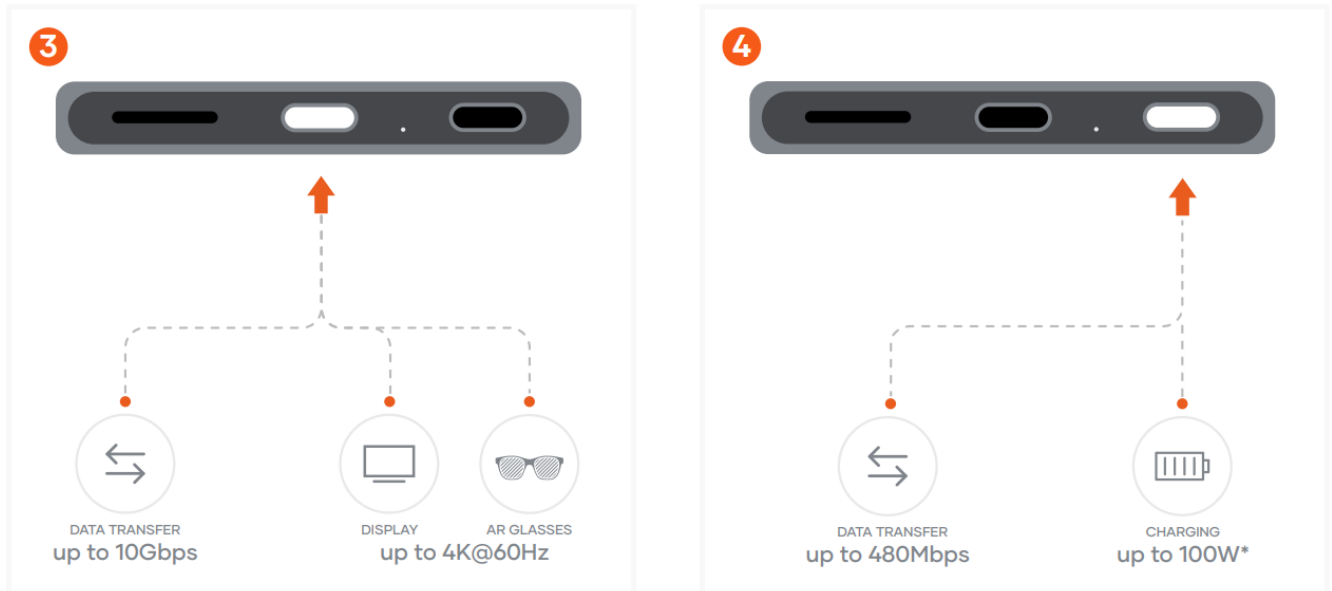


Micro SD Card Usage

Insert a UHS-I microSD card into the card reader slot. Supports UHS-I SDXC microSD cards.

Data Transfer and Display

- Connect a Thunderbolt 4, USB4, or USB-C to HDMI/DP cable to the USB-C port.



- Supports USB 3.0 at 10 Gbps, 2-lane DP1.4 with 8.1 Gbps per lane, 4-lane DP1.2 for iPhone 15, 4K@60Hz mode depending on the host and screen.

Connect a USB-C charging cable to either USB-C PD port.

Supports USB 2.0, plug & play; and PD3.1 SPR, with a maximum input of up to 100W depending on the host device.

- For Data Transfer: Connect a Thunderbolt 4, USB4, or USB-C to HDMI/DP cable to the USB-C port.
- For Display: Connect the appropriate cable depending on your device's specifications.

Note: This product may not be compatible with all cases. The maximum supported case thickness is 2.5mm. For cases that exceed this thickness, compatibility cannot be guaranteed.

Charging

For charging with a power of up to 100W*, connect a USB-C charging cable to either USB-C PD port. Ensure compatibility with your host device for maximum input power.

Note: This product may not be compatible with all cases. The maximum supported case thickness is 2.5mm.

Frequently Asked Questions

Q: What types of microSD cards are supported?

A: The adapter supports UHS-I SDXC microSD cards with speeds up to 33MBps.

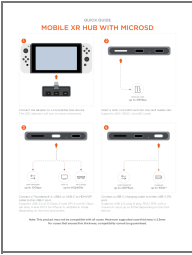
Q: What is the maximum charging power supported?

A: The adapter supports charging up to 100W, but the actual input power may vary depending on the host device.

Q: What display resolutions are supported?

A: The adapter supports display resolutions up to 4K@60Hz, providing high-quality visuals.

Documents / Resources

	<p>Mobile XR Hub with MicroSD for Console [pdf] User Guide Hub with MicroSD for Console, MicroSD for Console, Console</p>
---	---

References

- [User Manual](#)

Manuals+, Privacy Policy

This website is an independent publication and is neither affiliated with nor endorsed by any of the trademark owners. The "Bluetooth®" word mark and logos are registered trademarks owned by Bluetooth SIG, Inc. The "Wi-Fi®" word mark and logos are registered trademarks owned by the Wi-Fi Alliance. Any use of these marks on this website does not imply any affiliation with or endorsement.