

 MobilePixels

MP TETRA

Wireless Keyboard



Mobile Pixels MP TETRA Wireless Keyboard User Guide

[Home](#) » [Mobile Pixels](#) » Mobile Pixels MP TETRA Wireless Keyboard User Guide 

Contents

- [1 Mobile Pixels MP TETRA Wireless Keyboard](#)
- [2 Package overview](#)
- [3 Getting Started](#)
- [4 Charging](#)
- [5 Technical Information](#)
- [6 Safety and Handling](#)
- [7 Tetra Board Application](#)
- [8 FCC](#)
- [9 Documents / Resources](#)
 - [9.1 References](#)

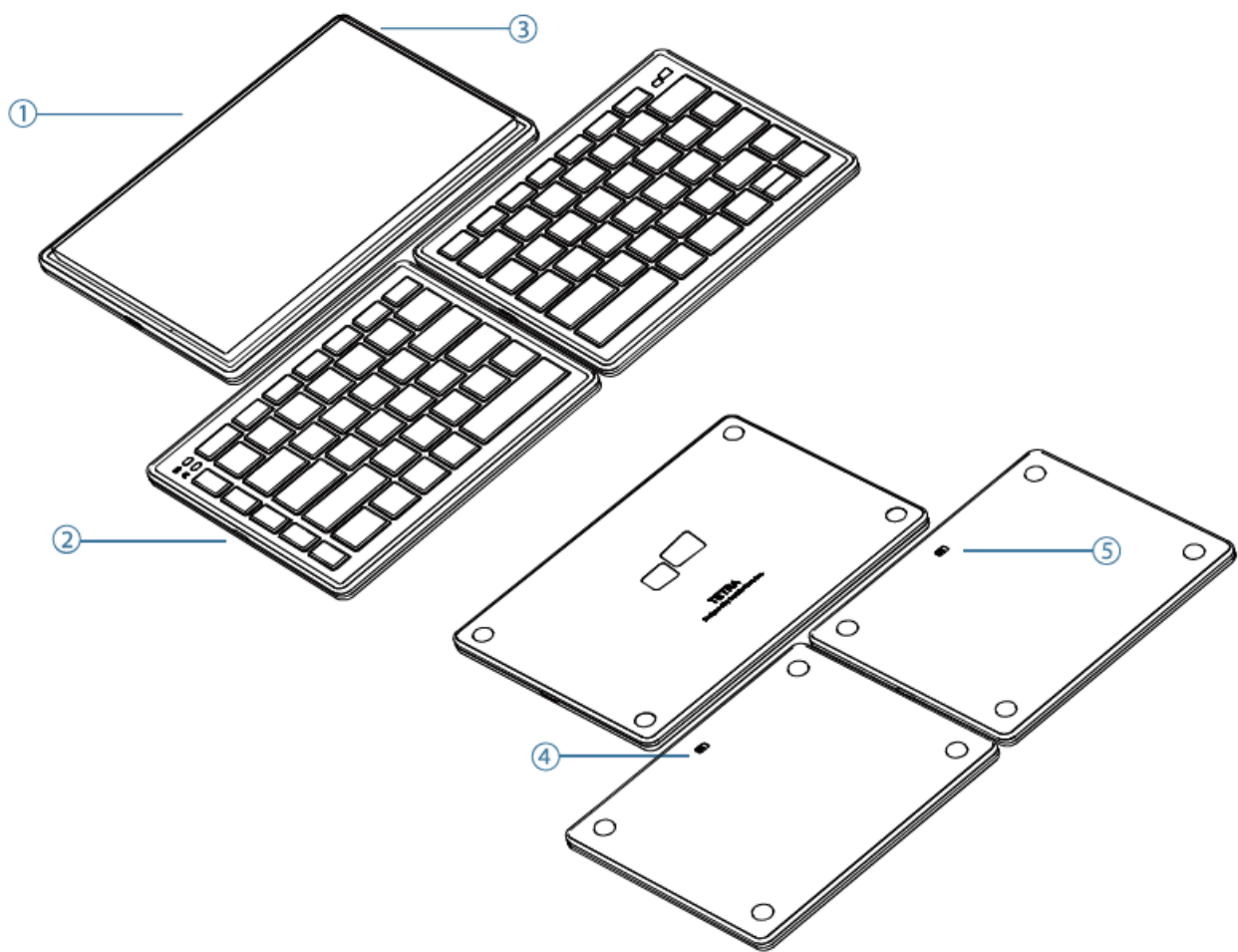
 MobilePixels

Mobile Pixels MP TETRA Wireless Keyboard



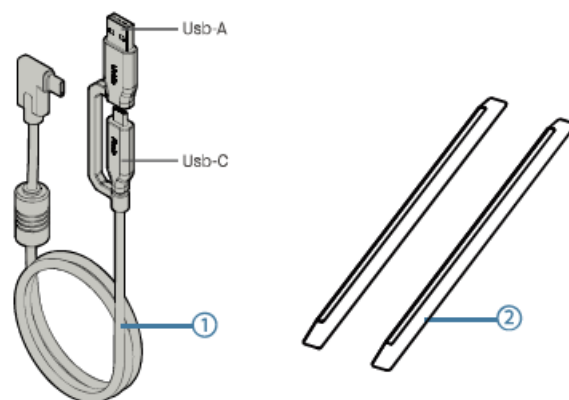
Package overview

Keyboard & accessories



1. 2 x Usb Type-C Port
2. Usb Type-c Charging Port
3. Screen Menu Button
4. Right keyboard Power Switch
5. Left keyboard Power Switch

Accessories



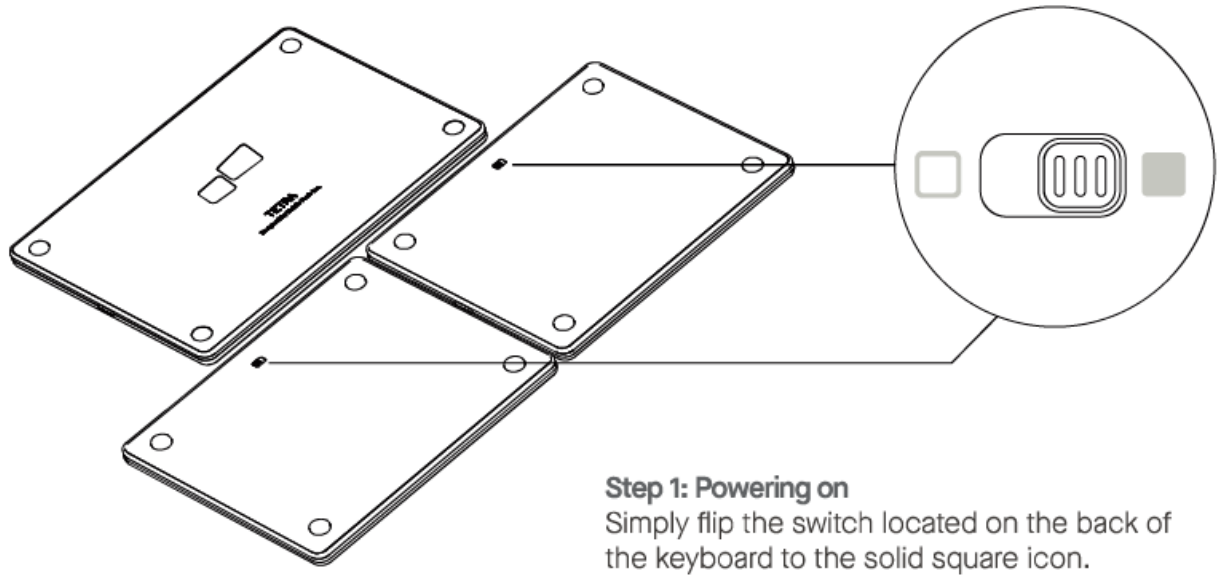
1. USB Type-C cable with USB-A. to C adapter
2. Tenting & Tilting Blocks

Getting Started

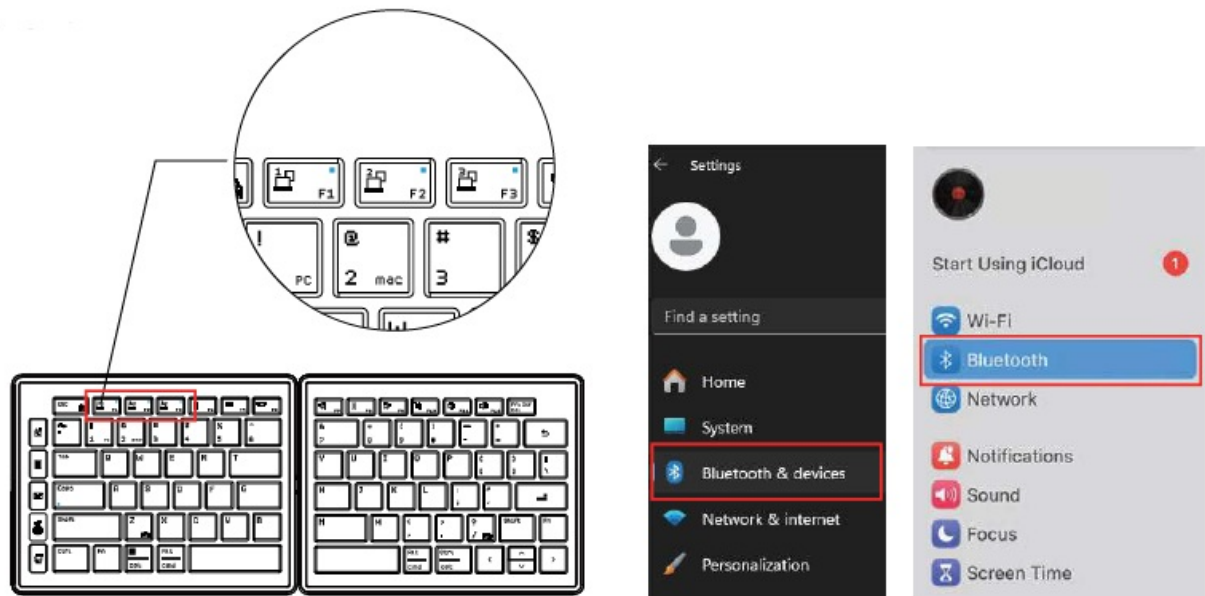
System Requirement

- MP TETRA Keyboard is compatible with Bluetooth enabled desktops and laptops running Windows (10, 11), macOS (10.3 – 14), And partially compatible with mobile devices running iOS, iPadOS and Android.

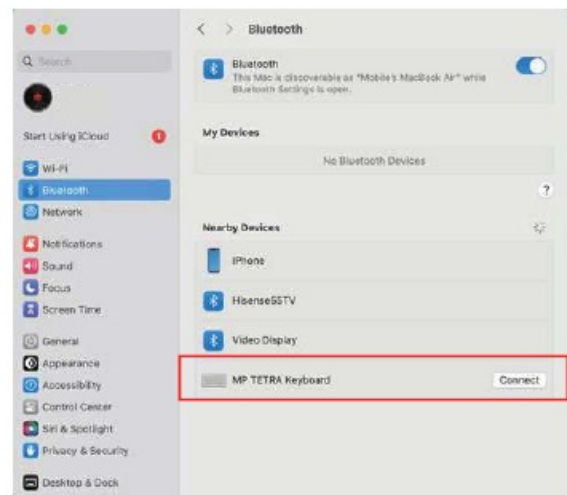
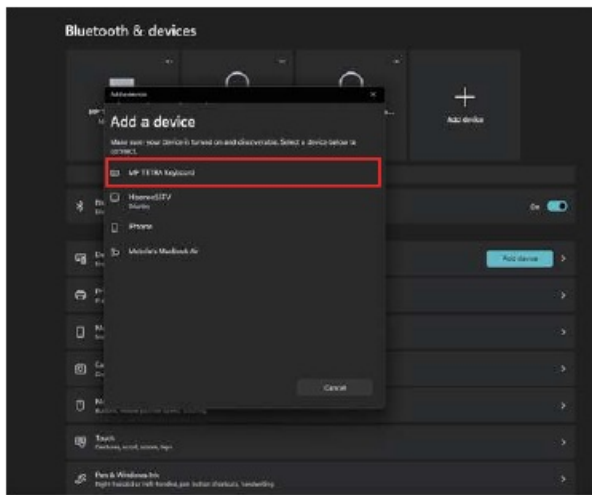
Set up the Keyboard



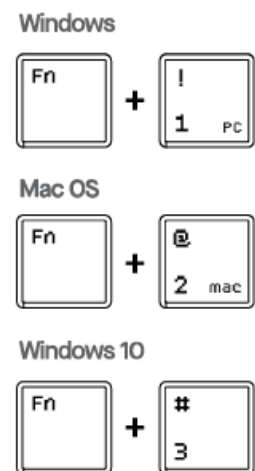
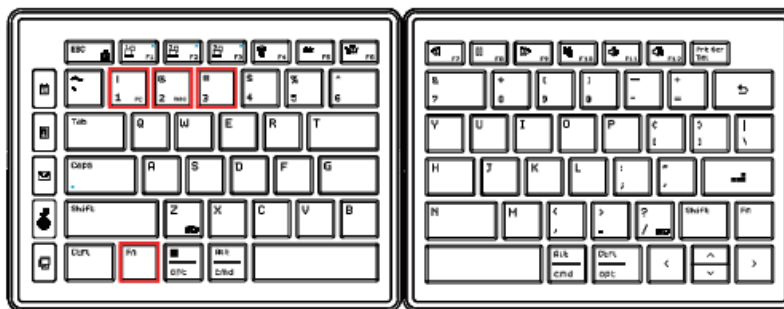
Pairing



1. Long press the F1 key to pair with device 1, F2 with device 2 etc.
2. Open the Bluetooth settings on your device.



3. Select the MP Tetra Keyboard from the list of available devices and wait for the connection to be established.
 - To re-establish connection between two halves of the keyboard, press down Fn+A+C on the left half. and Fn+P+K on the right half
 - To wipe all previously connected devices and reset the keyboard to its original state, press down Fn+Left Shift +Backspace

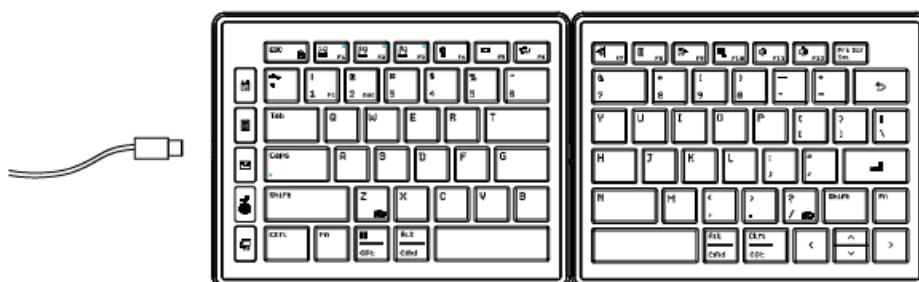


4. Depending on your device's OS:

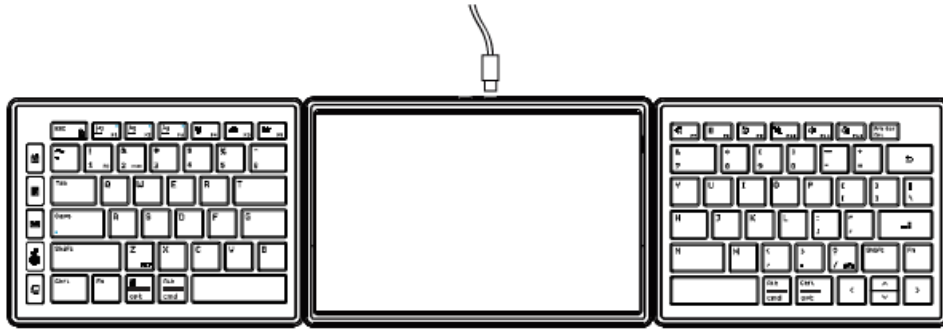
- Press Fn + 1 for Windows. Android key layout. Press Fn + 2 for macOS key layout
- For Windows 10 Key layout, press Fn + 3

Charging

- There are two ways to charge the keyboards



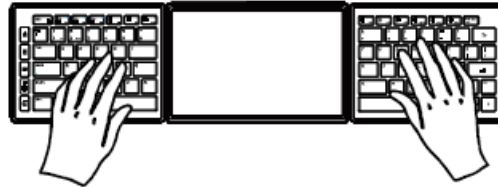
1. Connect the left and right keyboards via the pogo pins by docking the two halves together. Keyboard should charge via the USB-C port located on the left side of the keyboard, the under-glow light should start pulsing



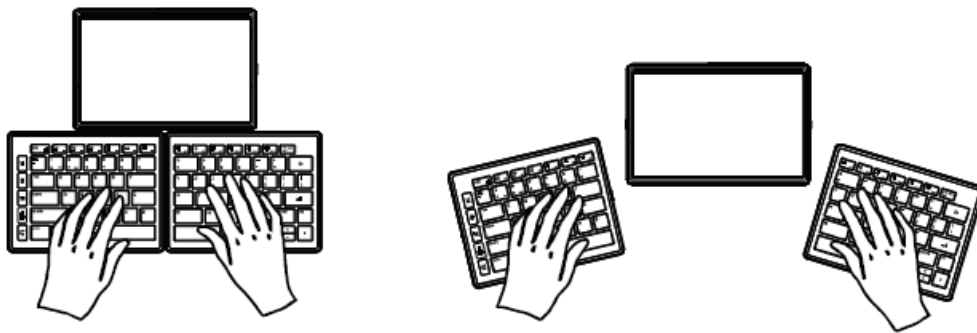
2. Connect the left and right keyboards to the display by docking the two halves to its sides. Keyboard should charge via the TETRA display. The under-glow light should start pulsing

Positioning

- There are several recommended configurations of keyboards placement. You can dock the two halves together, dock them to the display or split them up to use it.



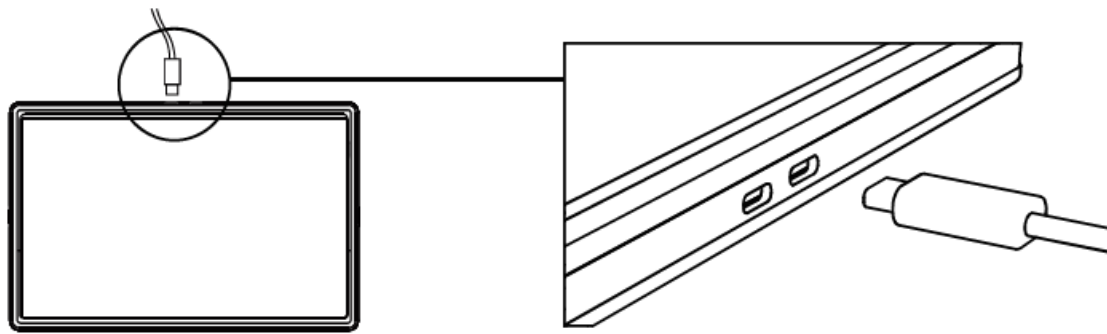
- Most importantly, place the two halves of the keyboard in a comfortable position in front of you. A good starting point is to align each half with your shoulders. Adjust the angle and distance between the keyboard halves to reduce strain on your wrists and arms. It may take some time to get used to typing on a split keyboard. Practice regularly to build muscle memory.



Set up the Display

Step 1: Connection

- The Display needs to be connected to a USB-A or USB-C port that supports the USB 3.1 standard. If the host supports Thunderbolt or DisplayPort enabled USB-C. Device will be plug-and-play.



USB C / Thunderbolt



USB C / Displayport



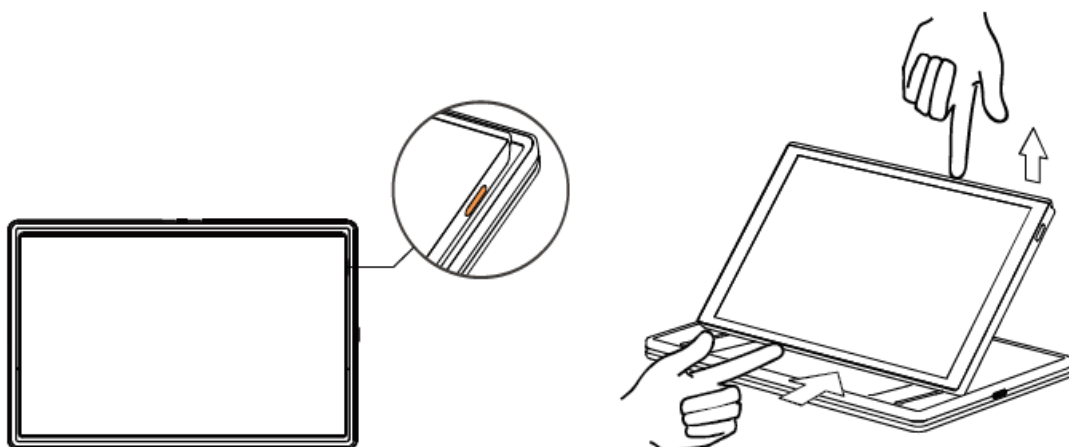
* If USB-C or USB-A only supports data transfer, a video driver is required. For installation, visit mobilepixels.us.



USB C / USB SS



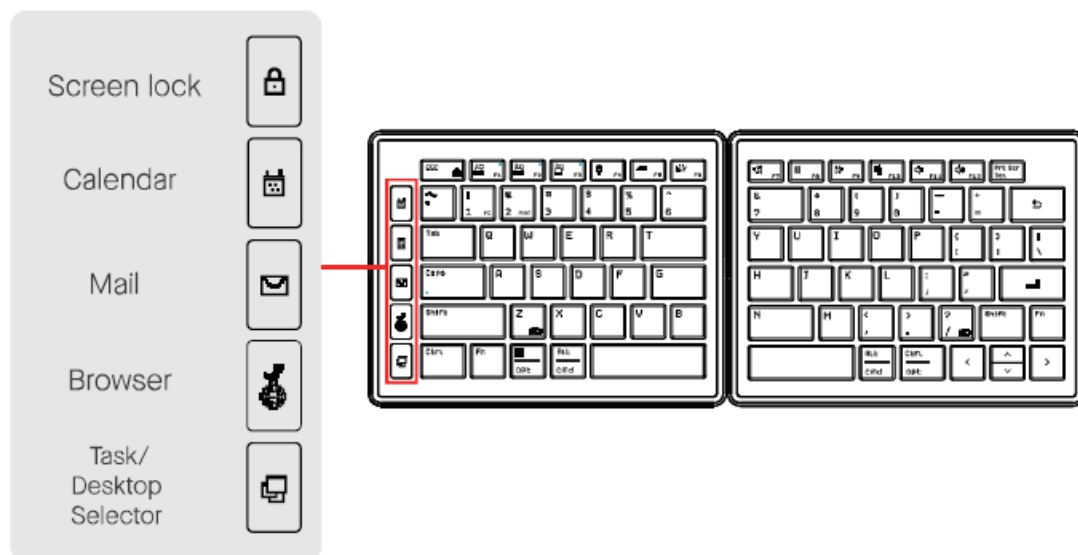
Step 2: Setting up



- The Display settings can be adjusted using the OSD touch-enabled menu.
- The Display angle can be adjusted by lifting the top edge or pushing from the bottom edge of the panel housing.

Shortcut Keys

- The 5 shortcut keys can be found under the left keyboard indicator lights (mac user please install script here for full functions):



Technical Information

Model	MP TETRA KEYBOARD
Size	172 mm x 132 mm x 13.8 mm
Weight	200g(Left), 196g(Right)
Key Travel	1.3±0.3mm
Peak/Bottom-out Force	Peak: 64±12 gf/Bottom-out: 29±10 gf
Keycap Type	ABS chamfered backlit keycap
Key Number	42(Left)+43(Right)
Switch Type	Scissor Switches
Battery	1200 mah on each keyboard
Charging Current	134mA (Dock), 320mA(USB-C)

Model	MP TETRA DISPLAY
Size	207 mm x 136 mm x 19 mm
Weight	498g
Display Type	IPS(LCD)
Refresh Rate	60Hz
Response time	30ms
Resolution	1280×800 RGB
Display Color:	16.7M
Color Gamut	60% NTSC
Charging Current	134mA (Dock), 320mA(USB-C)
Luminance	300 nit
Power Consumption	6.2W (Specifics)

*Specifications are subject to change without notice.

Safety and Handling

• IMPORTANT SAFETY INFORMATION

- Carefully go through the user manual and other documentation before setting up the MP TETRA. If any part is broken or damaged, do not try to open MP TETRA or attempt to fix it yourself, please contact the retailer, a qualified service technician or email us directly at contact@mobilepixels.us.
- Store MP TETRA under appropriate conditions, avoid exposure to extreme heat, moisture and dust. We recommend you to place MP TETRA on a stable surface and keep your MP TETRA in a sleeve to protect it during transport.
- Never spill liquid of any kind onto the surface or into the openings of the v. Do not spray any cleaner on the screen to avoid an electric shock. If your MP TETRA gets wet, unplug all cables and reconnect till the MP TETRA is completely dry.
- Carefully unplug all cables before cleaning MP TETRA. Clean with a soft, dry, lint-free cloth. To ensure satisfactory experience, use the MP TETRA with recommended display size of your laptop.
- Please disconnect the cables when you reverse the position of MP TETRA, decouple the MP TETRA from the backplane of your laptop, rotate 180° About a vector normal to the backplane, and re-couple to the backplane of the laptop computer.

CHOKING HAZARD

- MP TETRA and accessories contain small parts that may present a choking hazard to small children, please keep them out of reach from small children.

MEDICAL DEVICE INTERFERENCE

- The MP TETRA contains magnets. The MP TETRA also contain components and radios that emit electromagnetic fields. It may interfere with personal medical devices, e.g. pacemakers or defibrillators. Keep a safe distance between the MP TETRA and your medical device. Consult a physician or medical device manufacturer for specific details of your medical device. Stop using MP TETRA if the interference is observed with your personal medical devices. Items with magnetically-stored data such as credit cards and hard drives may be sensitive to magnetic or electromagnetic fields, hence should be kept at a distance from MP TETRA.

Tetra Board Application

Introduction



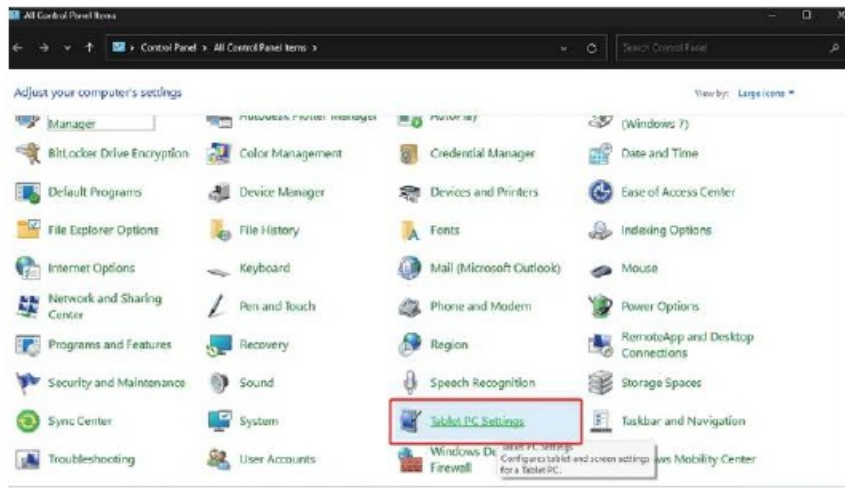
- MP TETRA Board is a content controller software that allows you to easily switch between different scenes, actions, and tools with the touch of a virtual button. The program has customizable keys that you can assign to various functions, such as adding text, launching applications, opening webpages, activating hotkeys, controlling your devices, and more. MP TETRA Board is designed to integrate with your most frequently used software, and in doing so, enhance their functionalities.

System Requirements

- MP TETRA Board is compatible with MP TETRA touch-enabled display connected to hosts running Windows (8, 10, 11) or macOS (10.3 – 14) with the MP Touch Driver installed.

Getting Started

- Please connect the MP Tetra monitor to the USB-C or A port on your Windows or Mac machine. (If you are connecting to a USB-A port or a data transfer-only USB-C port, please download and install the MP video driver)
- To ensure the touch input is registered on the proper screen, please refer to the steps below:
- **Windows** On Windows machines, please navigate to Control Panel and select Tablet PC Settings, then select the Setup button.



- **MacOS** On machines running macOS, please install the touch driver

To configure touch's input to bind to the monitor, please launch the identify command. Visit Monitor configuration for more information.

- **Installation** :Please visit <https://www.mobilepixels.us/pages/download-drivers> for downloads and installation guide

Warning:

- Changes or modifications not expressly approved by the party responsible for compliance could void your authority to operate the equipment.

FCC

FCC COMPLIANCE STATEMENT

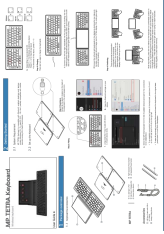
This device complies with Part 15 of the FCC Rules. Operation is subject to the following two conditions:

1. This device may not cause harmful interference.
2. This device must accept any interference received including interference that may cause undesired operation.

Note: This equipment has been tested and found to comply with the limits for a Class B digital device, pursuant to Part 15 of the FCC Rules. These limits are designed to provide reasonable protection against harmful interference in a residential installation. This equipment generates, uses, and can radiate radio frequency energy, and if not installed and used in accordance with the instructions, may cause harmful interference to radio communications. However, there is no guarantee that interference will not occur in a particular installation. If this equipment does cause harmful interference to radio or television reception, which can be determined by turning the equipment off and on, the user is encouraged to try to correct the interference by one or more of the following measures:

- Reorient or relocate the receiving antenna.
- Increase the separation between the equipment and receiver.
- Connect the equipment into an outlet on a circuit different from that to which the receiver is connected.
- Consult the dealer or an experienced radio/TV technician for help.

Documents / Resources



[Mobile Pixels MP TETRA Wireless Keyboard](#) [pdf] User Guide
109-760664R, 2BKJC-109-760664R, MP TETRA Wireless Keyboard, MP TETRA, Wireless Keyboard, Keyboard

References

- [User Manual](#)

Manuals+, Privacy Policy

This website is an independent publication and is neither affiliated with nor endorsed by any of the trademark owners. The "Bluetooth®" word mark and logos are registered trademarks owned by Bluetooth SIG, Inc. The "Wi-Fi®" word mark and logos are registered trademarks owned by the Wi-Fi Alliance. Any use of these marks on this website does not imply any affiliation with or endorsement.