



## moa TB70 Blender Instruction Manual

[Home](#) » [moa](#) » moa TB70 Blender Instruction Manual 

### Contents

- [1 moa TB70 Blender](#)
- [2 Documents / Resources](#)
  - [2.1 References](#)
- [3 Related Posts](#)

# moa

### moa TB70 Blender



#### **BEFORE USE**

Before use, please read this manual carefully.  
Only connect the appliance to an earthed wall socket.

This appliance is for household use only. When using electrical appliances, basic safety precautions should always be followed to avoid fires, electric shocks, burns, or other injuries and damage. Read these operating and safety instructions carefully.

**WARNING:** The blades of the knife are extremely sharp. Handle them with caution.

## **IMPORTANT SAFEGUARDS ( 1 /2)**

**WARNING:** the blades of the knife are extremely sharp. Handle them with caution.

1. Read all instructions carefully.
2. To protect against electric shock, do not place cord, plug or appliance in water or other liquid.
3. Close supervision is necessary when any appliance is used by or near children.
4. This appliance is not intended for use by persons (including children) with reduced physical, sensory or mental capabilities, or lack of experience and knowledge, unless instructions concerning use of the appliance by a person responsible for their safety.
5. Unplug from outlet when not in use and before cleaning.
6. Do not operate any appliance with a damaged cord or plug, in case of appliance malfunctions or if the appliance has been damaged in any manner.
7. The use of accessory attachments not recommended by manufacturer may cause malfunctions.
8. Do not use outdoors.
9. Do not let cord hang over edge of table or counter, or touch hot Surfaces.
10. Do not place the appliance on or near hot gas or electric burner, or in a heated oven.
11. This product has been designed for domestic use only. Any commercial use, inappropriate use or failure to comply with the instructions, the manufacturer accepts no responsibility and guarantee is no more valid.
12. Do not use your food processor if any part is broken.
13. Do not put the appliance, the power cord or the plug into water or any other liquid.
14. Make sure that the cover is securely locked in place before operating the appliance.
15. Never place ingredients in the container by hand and while the appliance is in use. Always use the food pusher.
16. The blade and discs are sharp. Handle carefully. Store out of reach of children.
17. If the power cord or the plug are damaged, do not use your appliance.
18. For your own safety, please use only the original accessories and spare parts which are suitable for your appliance.
19. Never remove the lid until the knife has stopped completely.
20. This appliance is designed to process small quantities. Do not exceed the quantities indicated in these instructions for use.
21. Do not use this appliance to mix glutinous food or substance.
22. Do not use appliance for other than intended use.
23. For your safety, this appliance conforms to the appliance standards, regulations and directives of Low Voltage, Electromagnetic Compatibility, Environment, etc.

**CAUTION:** Maximum time of processing should not exceed 30 second continuous Use. In order to achieve below processing times, use the appliance with pulses and intermediate 10 second pauses.

**CAUTION:** DO NOT OPERATE THE UNIT WHEN EMPTY.

**CAUTION:** DO NOT PUT HOT INGREDIENTS INTO THE JAR. BEFORE FOOD PREPARATION, ALLOW FOOD TO COOL DOWN FOR A FEW MINUTES.

**CAUTION:** Before you eat or serve blended food, please always check for ingredients that might have not been blended adequately.

## GENERAL

For better results: please make sure that the quantity of ingredients fly covers the blade while chopping solid food.

## CARE AND CLEANING

- Always unplug the appliance first.
- Only use a damp sponge to clean the motor unit. Never place it in water, or under running water.

## DESCRIPTION



1. Measuring Cup
2. Lid
3. Glass bowl
4. Blade
5. Glass bowl holder
6. Function button
7. Start knob
8. Rubber Feet

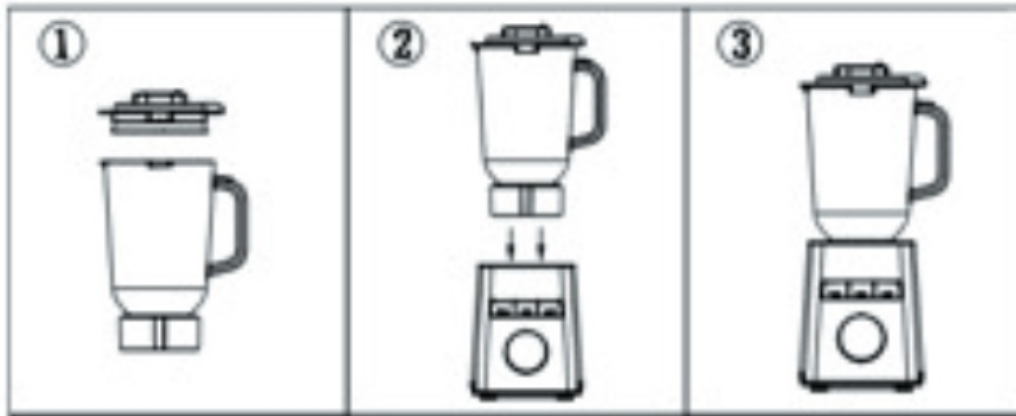
## PRODUCT FEATURE

1. **Rated voltage:** 220V 50/60Hz  
**Rated power:** 1 000W
2. Transparent AS measuring cup, black ABS cup cover with silicone seal ring, glass cup stainless steel serrated knife assembly (knife shaft material is SUS303, blade material is SUS304 natural color) stainless steel body (SUS201 T =0.35), knob ABS, knob with Step-less speed minmax, black base, black power cord exposed 1 M.
3. **Rotary switch function:** OFF O ON speed control gear, has pulse, crushed ice and milkshake function. The motor has a self-resetting thermostat.

## MINCING AND BLENDING WITH SPEED KNOB

With Glass Bowl

- Pour in the ingredients and cover the glass bowl (Fig. 1 ), and then place the glass bowl into the host (Fig. 2) and turn clockwise (Fig. 3). Lift the glass bowl to check it is locking whether or not.
- Plug in the appliance and rotate the start knob to which speed you need.
- At the end of preparation, rotate the start knob to position OFF, unplug the appliance and wait until the blades come to a complete stop.
- Remove the glass bowl and take off the lid, then pour out the ingredients.



### BLENDING WITH FUNCTION BUTTONS

Rotate the start knob to the position ON, then press the function button basing on your need.

- **Smoothie Function**

When you press “Smoothie” button, it will work for 1 minute.

- **Ice Crushing Function**

When you press “Ice crushing” button, the appliance will start the crushing program, it will work for 1 minute.

- **Pulse Function**

The appliance runs when pressing “Pulse” and stops working when releasing the button. When you press button “Pulse” , you should press it continuously until the food finish processing.

**Remark:** The appliance will stop automatically when it finishes the pre-set program after you press the button “Smoothie” or “Ice Crushing. Press the function button “Smoothie” or “Ice Crushing to start the appliance, press the button again to stop the program before the pre-set program ends, then the appliance will go to standby status.

### RECOMMENDED USAGE

Function Button: Smoothie

**Usage/ Ingredients: Smoothie:** Put fresh fruits and some liquid including yogurt, milk and juice). Then add some frozen food including dozen Fruits, ice or ice cream.

Maximum Recommended Dosage: s1.2

**Processing Time:** For stepless speed control, about 30-60 seconds.

**Function Button:** Ice Crushing

**Usage/Ingredients:** Cold drinks /Cocktails: Press the button “Ice Crushing. The speed change during the process

is preset by the program, is normal.

Maximum Recommended Dosage: 1.0L Ice 200g (Max 20 pieces of ice cubes 20\*20\*20mm)

**Processing Time:** For stepless speed control, about 30~60 seconds. Function Button: Rinse (Pulse) Usage  
Ingredients: Rinse the glass jar with warm water by pressing “Pulse” before cleaning. For better results in the Future use, it is recommended to thoroughly clean and dry the blending jar before reassembling.

**Maximum Recommended Dosage:** 500ml warm water

**Processing Time:** 20 seconds

**DISPOSAL**

Do not dispose of the device in normal domestic waste. Dispose of the device over a registered waste disposal trim or through your communal waste disposal facility. Observe the currently valid regulations. In case of doubt, consult your waste disposal facility.

**WARRANTY**


Dear Valued Customer,  
Thank you very much for purchasing a MOA product.

We wish you to inform you that this product is covered by a warranty which complies with all legal provisions concerning existing warranty and consumer rights in the country where the product was purchased.

Should you find any defect or malfunction of your MOA product, please contact the appropriate Customer Care Center.

Sincerely yours, The MOA Team

**Documents / Resources**

	<a href="#">moa TB70 Blender</a> [pdf] Instruction Manual TB70 Blender, TB70, Blender
---	--

**References**

-  [MOA](#)