

MIYLEE
FJ-017 Smart Scent
Diffuser



MIYLEE FJ-017 Smart Scent Diffuser User Manual

[Home](#) » [MIYLEE](#) » MIYLEE FJ-017 Smart Scent Diffuser User Manual 

Contents

- 1 MIYLEE FJ-017 Smart Scent Diffuser
- 2 Installation
- 3 Package Include
- 4 Function Buttons
- 5 Set System time
- 6 Set the working mode by APP
- 7 Product details
- 8 Equipment maintenance
- 9 Warranty
- 10 FAQ
- 11 FCC STATEMENT
- 12 Documents / Resources
 - 12.1 References
- 13 Related Posts

MIYLEE

MIYLEE FJ-017 Smart Scent Diffuser



Installation



1. Press the top button to open the cover.



2. Pull out the atomizer head and essential oil bottle as a whole



3. Take out the essential oil bottle, refill the essential oil, and put it back on the atomizer head



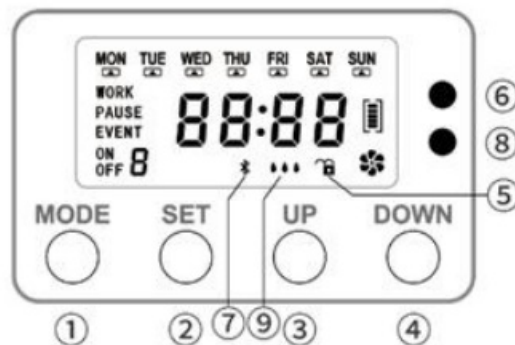
4. Put the atomizing head back into the device and close the cover.

Wall-mounted: First fix the wall-mounted backplane to the wall, and then hang the device on the backplane hole along the screw position.

Package Include

Smart scent air machine x1, power adapter x1, HVAC adapter x1, wall Bracket x1, user manual x1

Function Buttons



This device with Bluetooth and essential oil level detection function, could set byan APP or Buttons

Button Instruction

No	Key name	Function	How to use
①	MODE	1. Choose work mode 2. Reset	Adjust different functions, including your local current time, 5 different groups working periods, Work/Pause interval time, and aroma concentration. On the initial page, long press [MODE] for 10 seconds to restore the factory settings.
②	SET	1. Set Program 2.Lock/unlock	Start the program Setting by a flexible setting including the Time, Date, and aroma concentration. Then press [SET] for 5 seconds to lock /unlock the previous setting.
③	UP	1. Add 2.On/off fan	Press it to adjust/increase the function, such as adjusting the time, aroma concentration, and working days. Press and hold the UP button for 5 seconds to turn the fan on and off
④	DOWN	reduce	Press it to adjust/increase the function, such as adjust the time, aroma concentration, and working days.

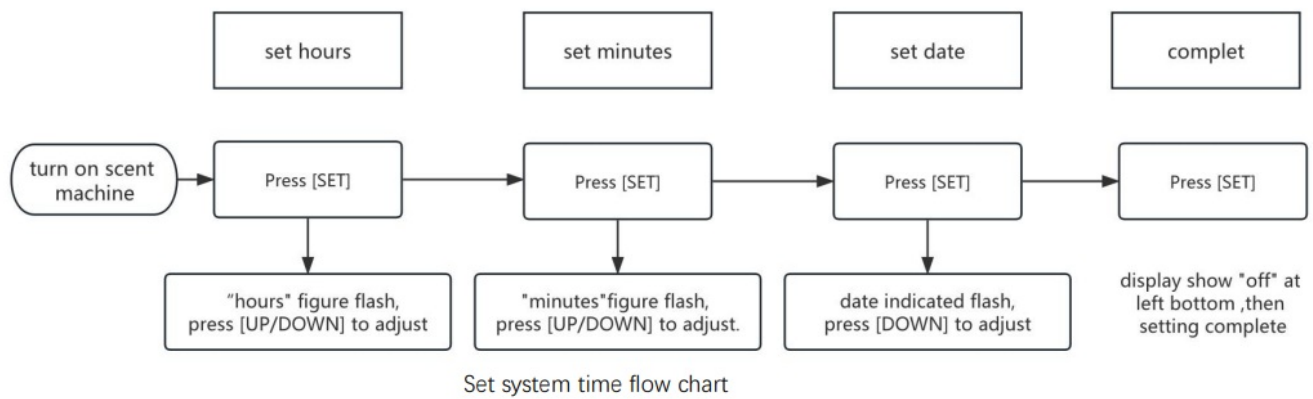
Display sign Instruction

No.	Name	Function
⑤	Lock/unlock	When locked,the device could not be program set.
⑥	Working/Bluetooth indicator light	When working: Green light flashing When paused: Green light is on. Bluetooth Connected or set update: Blue light flashing.
⑦	Bluetooth	displayed when connecting to mobile via bluetooth.
⑧	Oil level indicator light	The oil level is high: The green light is on. Oil level is medium:Yellow light is on. Oil level is low: red light is on. The red light flashes, indicating that oil level is insufficient, and refill the essential oil in time.
⑨	Oil level sign	The machine was controlled by a button in default. When connected to Bluetooth bluetooth control is prioritized

Set System time

- Please set the system time before you use it. The default time may not be the time in your time zone.
- After powering the machine, then press the set button to set the system time, you could follow the Set system time flow chart.

Time	Button	Operate
Hours	Press [SET]	until “hours” figure flashes, press [UP/DOWN] to adjust.
Minutes	Press [SET]	until the” minutes” figure flashes, press [UP/DOWN] to adjust.
Date	Press [SET]	until the date indicated flash, press [DOWN] to adjust.
Complete system time set	Press [SET]	until the display shows off at the left bottom, then the setting is complete.



Set the working mode by APP

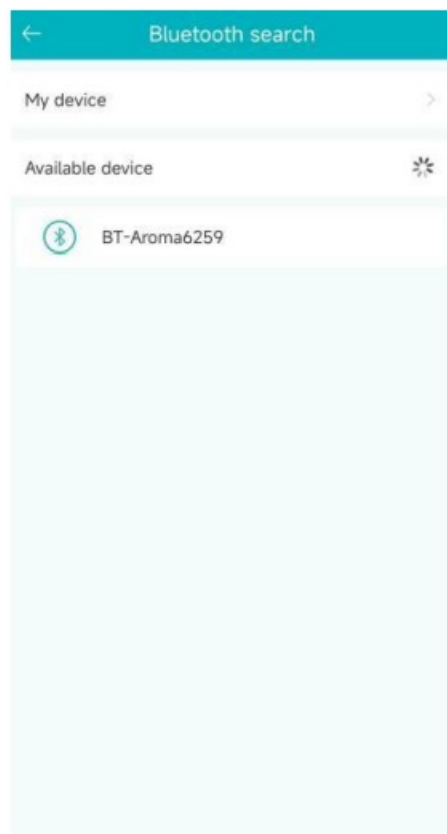
- Please search“Scent Tech” in Play Store to install this APP, Or scan this code to download this APP.
- The machine can be set up to 5 modes,it can be set for different working days, and working times according to different requests and suit for different places.



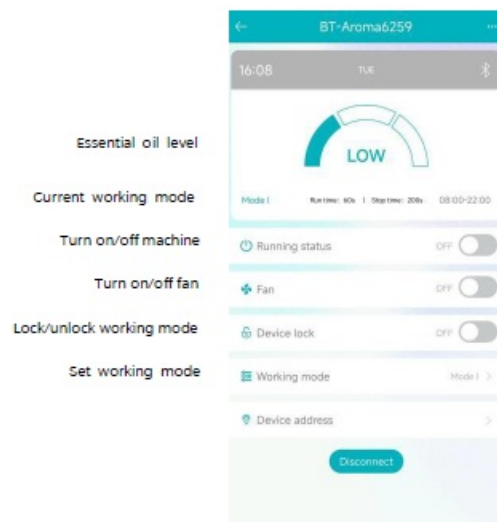
Step1 On the APP home page click “bluetooth” to add the device do not click “WIFI” or “4G”.This machine is a bluetooth device. Bluetooth connection does not need a registered account.



Step2 Add smart scent air machine.



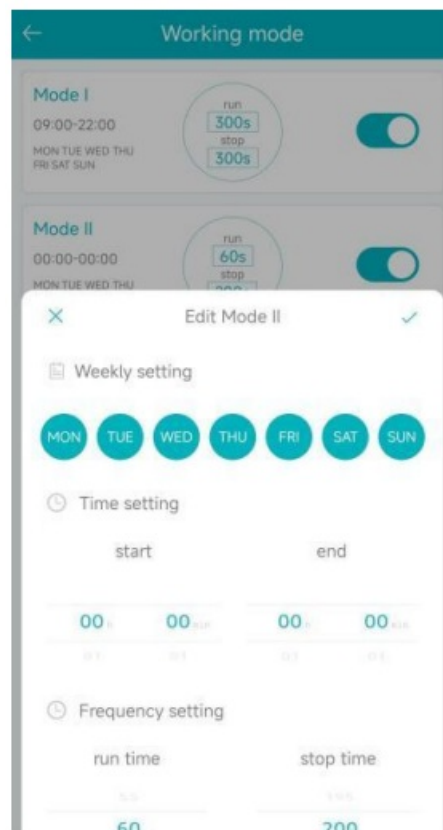
Step3 Click “working mode” to set time



Step4 into working mode



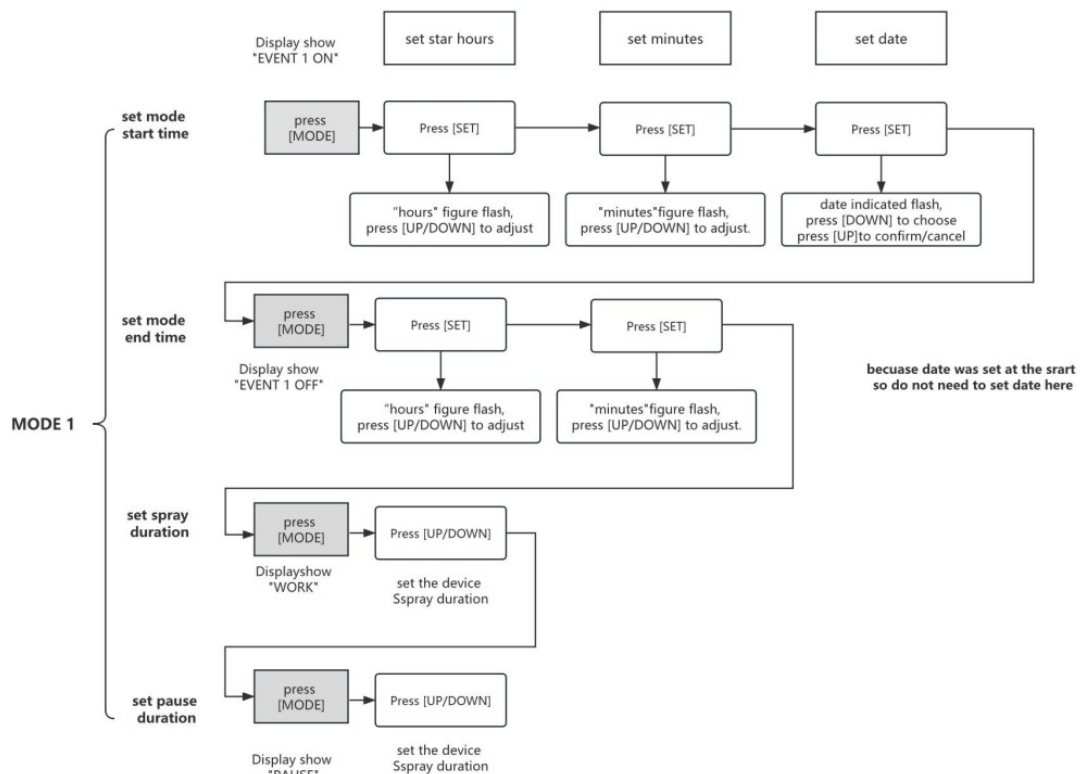
Step5 set your preferred work mode



Set the working mode by button

This device could set working mode by button and could set up to 5 modes. you could set it to follow the work mode flow chart .

Set mode	Set mode start time	<p>Press the [MODE] button first, LCD shows" EVENT 1 ON", press[SET] button and the UP/DOWN] button Select settings mode starting hours, minutes, and date.</p> <p>Note:</p> <p>1. when set the day, press the [Down] button to move, and press the [UP] button to select or cancel the day. 2. The symbol "▲" will show or disappear under the days on top of the display, which means select or cancel.</p>
	Set mode end time	<p>Press the [MODE] button secondly,LCD display shows" EVENT 1 OFF", Press the [SET] button</p> <p>Select settings mode end hours, minutes.</p>
	Set spray duration	<p>Press the [MODE] button thirdly, LCD display shows" WORK", press the [UP/DOWN] button to</p> <p>set the spray duration between 5~300 seconds</p>
	Set pause duration	<p>Press the [MODE] button thirdly, LCD display shows" PAUSE", press [UP/DOWN] button to</p> <p>set the pause duration between 20~300 seconds</p>



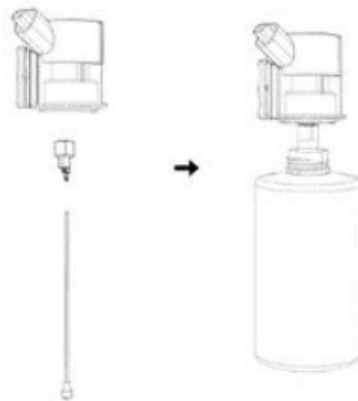
MODE 2

When complete mode1, continue press[MODE] and start to set mode2. you could set up to 5 modes Set work mode flow chart

Product details

- Size: 212×158×75mm/ 8.3×6.2×2.95 inch
- Power: 8W
- Capacity: 400ml/13.5 fl.oz
- Voltage: DC 12V
- Weight: 0.8kg/1.76 lb
- Coverage: 1000-2500 sq.ft

Replace the atomization core



The atomization head includes: the atomization core, oil tank, oil pipette, and filter. Take off the oil tank, pull out the pipette, remove the atomization core, then insert the new core into the main body of the atomization head, align the oil pipette with the small hole in the atomization core and press tighten it .

Equipment maintenance

If the equipment is not used for a long time, please refill the oil tank with 95% industrial alcohol to clean the nozzle and other parts inside the machine. Tip: Maintain the equipment with 95% industrial alcohol at least every 1-2 months. Specific operation: add 95% alcohol into the empty bottle, turn on the equipment, and run for 10-15 minutes, then turn off the machine and pour the alcohol then install the tank to a machine.

Warranty

1. The Warranty is suitable for new machines but not resell or second-hand products.
2. Warranty is offered for all qualified machines. During the warranty, we will offer repair services and free parts but without essential oil.
3. The warranty card & purchase Invoice are needed if after-sell service is required. Please contact us within warranty when have any problems.
4. The following is not for free warranty service
 1. Damage & problems caused by Accidents & Fire.
 2. Not used properly and wrong operation.
 3. If repaired by not a professional person and make some parts damaged.
 4. Damaged during transportation.
 5. Without our warranty card.
 6. Without proper cleaning for a long time
 7. The machine works time out.

8. Machines & Parts not from us.
9. Machines not gotten from official channels.
10. Send the machines back without a permit from the manufacturer.

Notice

1. Please carefully read the Instructions before installation, and keep the User manual to check if need at anytime
2. Please make sure the machine is upright , no leaking and no down; or may damage the device and parts
3. Please do not use the broken power wire and make sure the power supply is suitable for the machine, or may cause fire .
4. Please do not open the machine by yourself, If problems, please contact us promptly !

FQA

1. 1. After turn on there is no diffuser.
 1. This scent machine is different from the traditional diffuser which runs all the time. It will work for several seconds, then pause, and work again.
 2. Check the Power.
 3. Replace the oil with rubbing alcohol and run it through for 10-15 minutes.
2. Could this machine connect with Wifi?

It could not use Wifi. This is a bluetooth connection machine ,it only could connect to a mobile phone via bluetooth.
3. Did the App need registered to use?

No,Click"bluetooth" to connect the device do not need registration,
4. The motor is working but there is no scent.

First, you need to check whether the essential oil tank is tightened. If there is air leakage, the fragrance will not be sprayed.If there is no problem with the installation, please reset the machine and then it will work again.
5. After setting the working mode through the app, the indicator light is on, but the screen does not change and the machine does not work.

Take off the power cable for 10 minutes, then power it on again and restart the machine.

FCC STATEMENT

FCC Warning

This equipment has been tested and found to comply with the limits for a Class B digital device, pursuant to part 15 of the FCC Rules. These limits are designed to provide reasonable protection against harmful interference in a residential installation. This equipment generates, uses, and can radiate radio frequency energy and, if not installed and used in accordance with the instructions, may cause harmful interference to radio communications. However, there is no guarantee that interference will not occur in a particular installation. If this equipment does cause harmful interference e to radio or television reception, which can be determined by turning the equipment off and on, the user is encouraged to try to correct the interference by one or more of the following measures:

- Reorient or relocate the receiving antenna.
- Increase the separation between the equipment and the receiver.
- Connect the equipment to an outlet on a circuit different from that to which the receiver is connected.
- Consult the dealer or an experienced radio/TV technician for help.

Caution: Any changes or modifications to this device not explicitly approved by the manufacturer could void your authority to operate this equipment.

This device complies with part 15 of the FCC Rules. Operation is subject to the following two conditions:

- 1. This device may not cause harmful interference, and
- 2. this device must accept any interference received, including interference that may cause undesired operation.

This equipment complies with FCC radiation exposure limits set forth for an uncontrolled environment. This equipment should be installed and operated with minimum distance 0cm between the radiator and your body.

Documents / Resources

	<p>MIYLEE FJ-017 Smart Scent Diffuser [pdf] User Manual 2BMLV-FJ-017, 2BMLVFJ017, FJ-017 Smart Scent Diffuser, FJ-017, Smart Scent Diffuser, Scent Diffuser, Diffuser</p>
---	---

References

- [User Manual](#)

[Manuals+](#), [Privacy Policy](#)

This website is an independent publication and is neither affiliated with nor endorsed by any of the trademark owners. The "Bluetooth®" word mark and logos are registered trademarks owned by Bluetooth SIG, Inc. The "Wi-Fi®" word mark and logos are registered trademarks owned by the Wi-Fi Alliance. Any use of these marks on this website does not imply any affiliation with or endorsement.