



Mixtile H17A Hub Home Automation Server User Manual

[Home](#) » [MIXTILE](#) » Mixtile H17A Hub Home Automation Server User Manual 

Contents

- [1 Mixtile H17A Hub Home Automation Server User Manual](#)
- [2 Preface](#)
- [3 General Safety](#)
- [4 Cleaning and Maintenance](#)
- [5 About Mixtile Hub](#)
- [6 Features](#)
- [7 Specification](#)
- [8 Parts and Functions](#)
- [9 Before Use](#)
- [10 Getting Started](#)
- [11 Basic Operations](#)
- [12 Legal Compliance](#)
- [13 FCC Statement](#)
- [14 Warranty and Service](#)
- [15 References](#)

Mixtile

Mixtile H17A Hub Home Automation Server User Manual



Preface

Thank you for purchasing Focalcrest Mixtile Hub, the home automation server. To use your hub safely and effectively, please read this User Manual thoroughly before use and follow the instructions provided. Please keep this User Manual for future reference. Focalcrest reserves the right to change the product information and specifications without notice. The products and specifications discussed herein are for reference purposes only. All information discussed herein may change without notice and warranties of any kind. This document and all information discussed herein remain the sole and exclusive property of Focalcrest.

Safety Instructions

Warning: These safety instructions provide important safety information and should be observed at all times. Please read them before using the product.

General Safety

- This product is designed to be used in dry indoor places. It is not waterproof, please keep it away from rain or water.
- The adapter shall be installed near the hub and shall be easily accessible.
- Do not use the hub if it is damaged or it shows any kind of visible damage.
- Do not handle the hub and its components with wet hands.
- Do not dismantle the hub.
- The AC adapter may become hot during the normal operation of your hub. Use care when handling the adapter during or immediately after operation.
- Always use genuine parts and accessories provided. Using parts and accessories other than the provided one may cause short circuits or overheating, and result in electric shock or fire.

Location

- Always place the hub on an even and stable surface.
- Keep the hub away from direct sunlight or moisture.
- Keep the hub away from heat sources, such as stovetops or ovens.
- Do not subject the hub to extreme temperatures.

- Do not subject the hub to strong impact or vibration.
- Keep the hub away from potentially dangerous locations, such as flammable, explosive, chemical-laden or wet atmospheres where petrol or flammable liquids are used for storage.

Cleaning and Maintenance

It is recommended that you clean the hub by wiping it gently using a soft and dry cloth. Do not use water, chemical substances or detergents. These may cause discoloration or corrosion to the product's exterior and may cause a fire or electric shock. Do not attempt to repair the hub or its accessories by yourself, as damage or personal injury may occur. Damage caused by unauthorized repair is not under the warranty. Please contact our Authorized Service Center for any possible problems concerned with the product.

WARNING

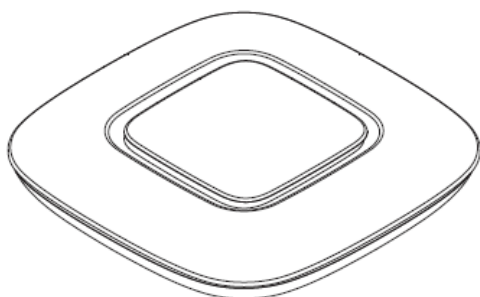
No user-serviceable parts inside. Refer all servicing to qualified service personnel. Focalcrest disclaims all liability for any accidents or damage caused by using the product in the ways that are not described in this User Manual or using non-genuine parts or accessories.

About Mixtile Hub

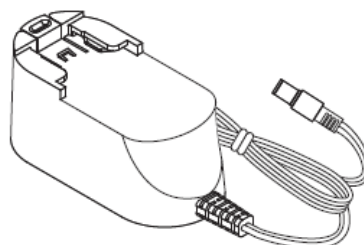
Overview

Mixtile Hub is a home automation server that can connect to various smart home devices from different brands. It enables you to control and monitor your home within one app and automates your smart home devices to meet your desired scenarios.

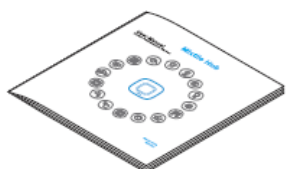
Package Contents



Mixtile Hub x 1



AC Adapter x 1



User Manual x 1

Note: The images shown in this User Manual are for reference only and may slightly differ from the actual product. The plug is varied according to the destination country/region.

Features

Automated Operation

Mixtile Hub can connect to a wide range of smart home devices and automates such devices to respond to your unique schedules and customized scenes.

App Control

Simply adding your smart home devices to Mixtile App, you are able to control and monitor your home anywhere in the world, within one app.

High Security

Mixtile Hub protects your data with multiple layers of security, and can automatically identify safe or risky device and alert you if necessary.

Backup Battery

When hit by power outage, the built-in battery can automatically power the hub and enable the hub to continue communicating with working devices powered by batteries.

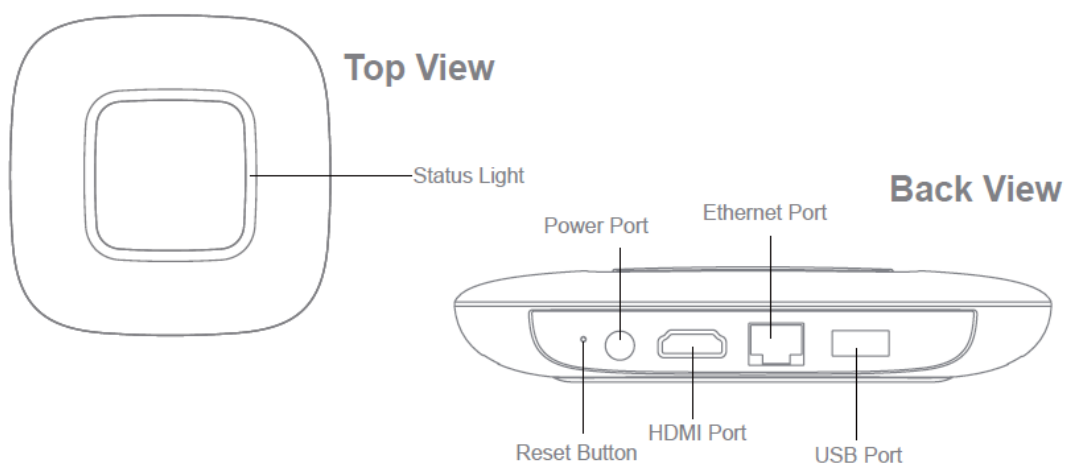
Open Source System

Open source system for developers, adding more brands and devices as you like is possible.

Specification

Model	H17A
Processor	Allwinner H3
Communication	IEEE 802.11b/g/n; 2.4GHz Wi-Fi Compliant ZigBee, Z-Wave
Storage	8GB eMMC
Memory	1GB DDR3 1333MHz
Built-in Speaker	1.5W/8ohm
Built-in Battery	2500mAh Rechargeable Lithium-ion Battery
Adapter	Input: AC 100-240V; 50/60Hz; 0.6A
	Output: 5V/2.5A
Network Connection	2.4G Wi-Fi/Ethernet
Operating Temperature	32 °F to 140 °F /0°C to 60°C
Storage Temperature	23°F to 113°F /-5°C to 45°C
Net Weight*1	0.65lb /295g
Gross Weight*1	1.68lb /760g
Dimension	5.5" x 5.5" x 1.1"/140 x 140 x 27mm
Materials	Plastics
Origin	China
Manufacturer	Shenzhen ZHIQU Technology Limited
Address	RM1101, Tower B, Haisong Building, Tairan 9th Road, Futian District, Shenzhen, China
*1: Average weight: there may be slight weight deviation for each device.	

Parts and Functions



Parts	Functions
Reset Button	<ol style="list-style-type: none"> 1. Reset the network. See <i>7. Basic Operations</i>. 2. Restore to factory settings. See <i>7. Basic Operations</i>.
Power Port	The supplied power adapter converts AC power to DC power for use with this port.
HDMI Port	Support an HDMI cable for connection to TV.
Ethernet Port	Support a standard Ethernet Cable for connection to a local network.
USB Port	Support a USB cable for data exporting or other USB enabled accessories.
Status Light	Indicate the real time status of the hub.

The status light indicates the status of the hub:

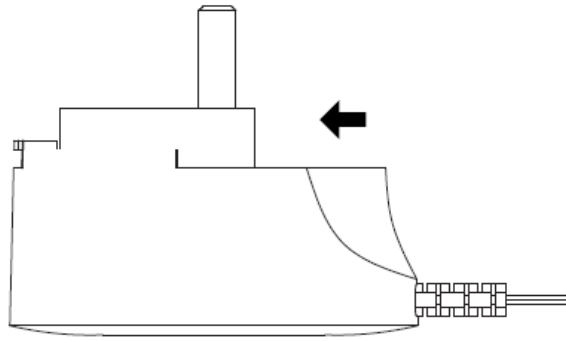
Color	Meanings
Solid blue	<ol style="list-style-type: none"> 1. The device is starting up. 2. The device works normally.
Spinning blue	The device is ready for setup.
Blink blue 5 times	Identify Mixtile Hub.
Spinning green	Mixtile Hub is searching for sensors.
Solid yellow	<ol style="list-style-type: none"> 1. Network disconnected. 2. Sensors disconnected.
Breathing yellow	Sensors are low battery.
Solid orange	You have silenced the alarm temporarily.
Breathing orange	Mixtile Hub is low battery.
Fast flashing red	A sensor has reached emergency level.

Before Use

Assemble the Power Adapter

Before use, you need to connect the AC adapter with the plug to assemble a ready-to-use power adapter.

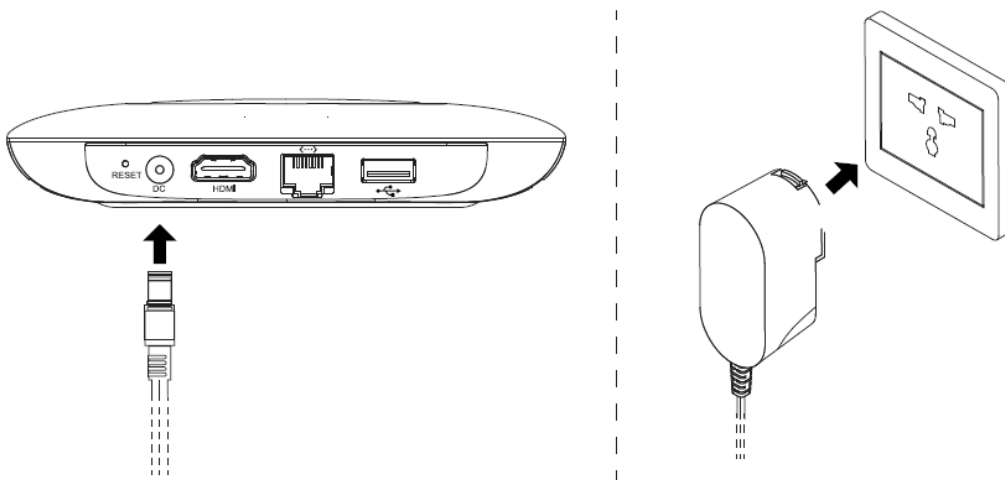
- Properly align the key in the plug and the slot in the AC Adapter, and finger-tighten the plug and AC Adapter to hold the adapter firmly in place.



Simple Setup

Attach External Power Supply Plug in the adapter to an outlet and attach the power connector to the back of the Hub.

Warning: Only use the adapter and its accessory provided.



Connect to the Internet

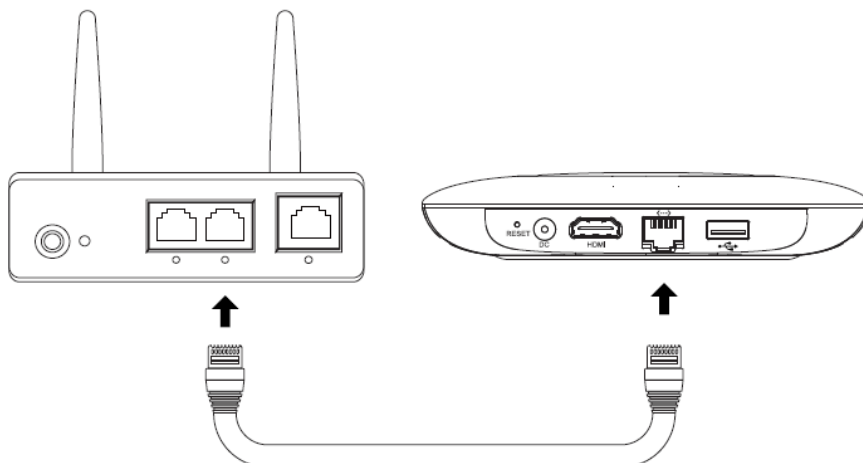
Mixtile Hub can be connected to the internet through Wi-Fi or an active Ethernet Cable.

Wi-Fi Connection

Follow the instructions in Mixtile App to complete the connection.

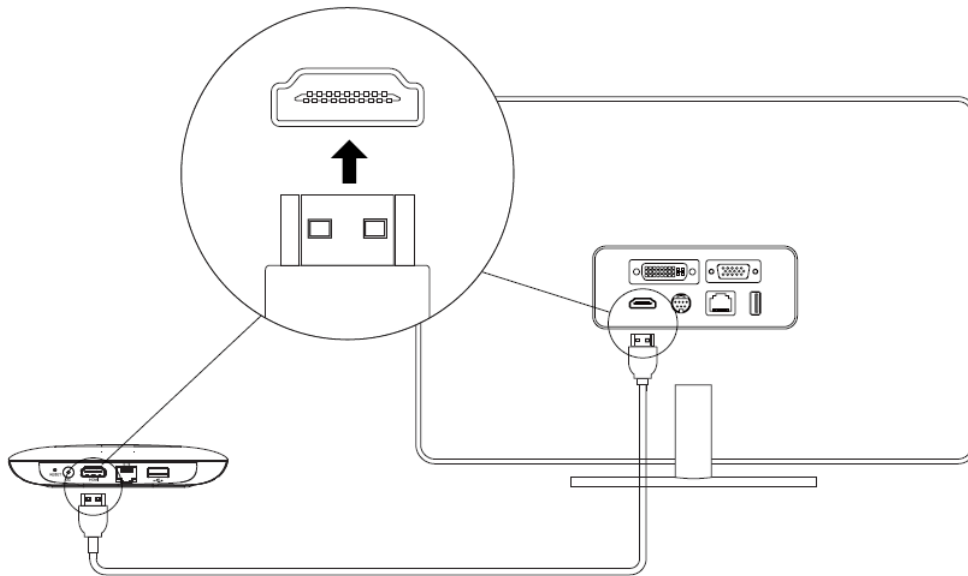
Ethernet Cable Network Connection

Insert an active Ethernet Cable into the Ethernet port of the hub.



Connect to TV (Optional)

When the hub is connected to TV, you will be able to see the hub status on the TV. The HDMI cable is not provided. Attach the HDMI cable to the hub and plug in the other side of the cable to the TV. Follow the instructions on the screen to complete the connection.



Getting Started

Download Mixtile App

Visit Apple App Store or Google Play Store to download the latest version of the Mixtile App.

Note: The Mixtile App supports iOS 8+ or Android OS 4.0+.

Create Account/Login (Optional)

You can create an account as instructed. If you already have an account, please login directly.

Note: Account is not mandatory, you can skip this procedure and continue using mixtile hub.

Add Mixtile Hub

Follow the instructions on the app to add Mixtile Hub. A pairing code is required. You can find the code on the label pasted on the hub.

Note: The first person who adds the hub will be assigned as the owner of the hub. The others who want to add the hub must be invited by the device owner.

Basic Operations

Boot the Hub

The hub is about to work when it is plugged into the outlet.

Shut down the Hub

The hub stops working when it is unplugged.

Note: When the hub is unplugged, the built-in battery doesn't work as well. During power outage, you need keep the hub plugged in, so that the built-in battery can power the hub automatically.

Restore to Factory Settings

Unplug the hub, and then re-plug the hub into the outlet while keep pressing the Reset Button.

Reset Network

Long press the Reset Button to reset the network. You need re-configure your network.

Legal Compliance

Disposal Instructions

This symbol on the product or on its packaging indicates that this product must not be disposed of with your other household waste. Instead, it is your responsibility to dispose of your waste equipment by handing it over to a designated collection point for the recycling of waste electrical and electronic equipment. The separate collection and recycling of your waste equipment at the time of disposal will help conserve natural resources and ensure that it is recycled in a manner that protects human health and the environment. For more information about where you can drop off your waste equipment for recycling, please contact your local city office, your household waste disposal service, or the shop where you purchased the product.

CE Compliance Statement

This product had been subject to testing requirements for the CE mark, and has been approved to claim CE mark for the standard: 60950-1:2006+A11:2009+A1:2010+A12:2011+A2:2013

FCC Statement

This device complies with Part 15 of the FCC Rules. Operation is subject to the following two conditions:

- (1) This device may not cause harmful interference, and
- (2) This device must accept any interference received, including interference that may cause undesired operation.

Warning: Changes or modifications not expressly approved by the party responsible for compliance could void the user's authority to operate the equipment.

NOTE: This equipment has been tested and found to comply with the limits for a Class B digital device, pursuant to Part 15 of the FCC Rules. These limits are designed to provide reasonable protection against harmful interference in a residential installation. This equipment generates uses and can radiate radio frequency energy and, if not installed and used in accordance with the instructions, may cause harmful interference to radio communications. However, there is no guarantee that interference will not occur in a particular installation. If this equipment does cause harmful interference to radio or television reception, which can be determined by turning the equipment off and on, the user is encouraged to try to correct the interference by one or more of the following measures:

- Reorient or relocate the receiving antenna.
- Increase the separation between the equipment and receiver.
- Connect the equipment into an outlet on a circuit different from that to which the receiver is connected.
- consult the dealer or an experienced radio/TV technician for help.

To comply with FCC RF exposure compliance requirements, this grant is applicable to only mobile configurations. The antennas used for this transmitter must be installed to provide a separation distance of at least 20 cm from all persons and must not be co-located or operating in conjunction with any other antenna or transmitter.

Use of Free and Open-Source Software

This document contains licensing information relating to the use of free and open-source software (FOSS) with or within the Mixtile Hub software. The open source software is governed by the terms and conditions of the applicable open source license, and you are bound by the terms and conditions of the applicable open source license in connection with your use and distribution of the open source software in this product. You agree to comply with all such licenses and other notices. If you do not agree to such terms, you may not install, download, or otherwise use the open source software. A document containing the complete and current list of FOSS packages used in Mixtile Hub software can be found here: www.mixtile.com/foss

Warranty and Service

Limited Warranty

Thank you for purchasing Focalcrest Mixtile Hub. Focalcrest values your business and always attempts to provide you the very best quality of service. Focalcrest warrants to the purchaser of the product in its original sealed packaging that the product is free from defects in material and workmanship, for the limited warranty period, which duration is One years, beginning on the date the product was purchased in its original sealed packaging. The warranty stated herein shall NOT apply if:

- The product was not used in accordance with any accompanying instructions.
- The product was not used for its intended function and environment.
- Any failure or defect arose out of the presence of a third party product or component, whether authorized or not.
- Any failure or defect was a result of improper installation or testing, misuse, neglect, unauthorized repair, modification, accident or other external causes.
- Customer does not provide required proof of purchase.
- Focalcrest reserves the right of final decision in all warranty cases. Focalcrest may interpret and revise the content of this warranty terms.

Service

If you have any question, please contact us through www.mixtile.com. If it becomes necessary to return the device for repair, contact your local distributor for more information.

Focalcrest

For more information, please visit www.mixtile.com

Download PDF: [Mixtile H17A Hub Home Automation Server User Manual](#)

References

- [User Manual](#)