



MISENO MM4040LED MR LED Lighted Mirror with Built in Magnifier and Clock User Guide

[Home](#) » [Misen](#) » MISENO MM4040LED MR LED Lighted Mirror with Built in Magnifier and Clock User Guide 

Contents

- 1 MISENO MM4040LED MR LED Lighted Mirror with Built in Magnifier and Clock
- 2 IMPORTANT SAFETY INFORMATION
- 3 PACKAGE CONTENTS
- 4 INSTALLATION
- 5 INSTALLATION DIMENSIONS
- 6 BASIC OPERATION
- 7 CARE AND MAINTENANCE
- 8 WARRANTY
- 9 REPLACEMENT PARTS
- 10 Documents / Resources
 - 10.1 References



MISENO MM4040LED MR LED Lighted Mirror with Built in Magnifier and Clock



Model: MM4040LED MR, MM4835LED MR, MM5636LED MR, MM6028LED MR

IMPORTANT SAFETY INFORMATION

Please read through this installation instruction so you will know how to install and operate your model properly. Keep this document in a safe place for future reference after use.

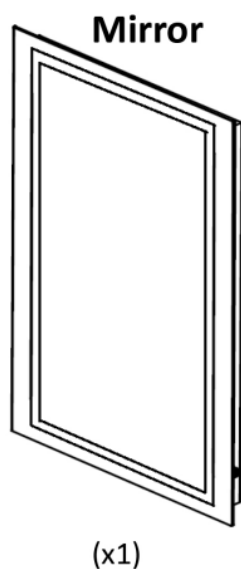
WARNING

This product must be installed under the installation instructions by qualified technician. Failure to follow instructions could result in death or serious bodily injury.

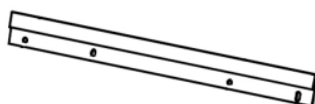
CAUTION

This product must be serviced by qualified personnel. ALWAYS unplug the power cord or turn off the circuit breaker before service.

PACKAGE CONTENTS



Mounting Bracket



(Model MM4040LED MR x2)
 (Model MM4835LED MR x2)
 (Model MM5636LED MR x2)
 (Model MM6028LED MR x2)

Screw



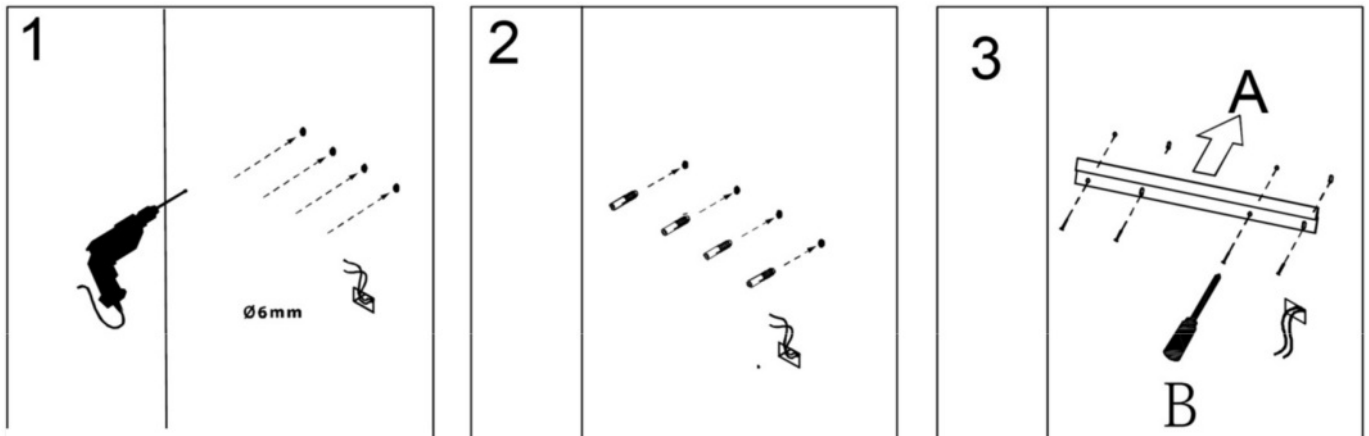
(Model MM4040LED MR x4)
 (Model MM4835LED MR x4)
 (Model MM5636LED MR x4)
 (Model MM6028LED MR x4)

Drywall Anchor

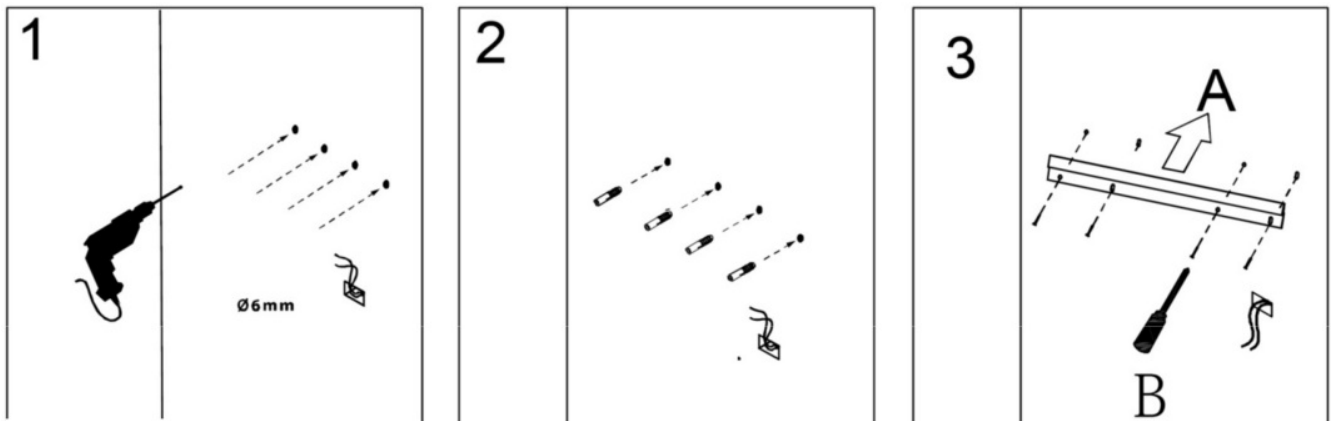


(Model MM4040LED MR x4)
 (Model MM4835LED MR x4)
 (Model MM5636LED MR x4)
 (Model MM6028LED MR x4)

INSTALLATION



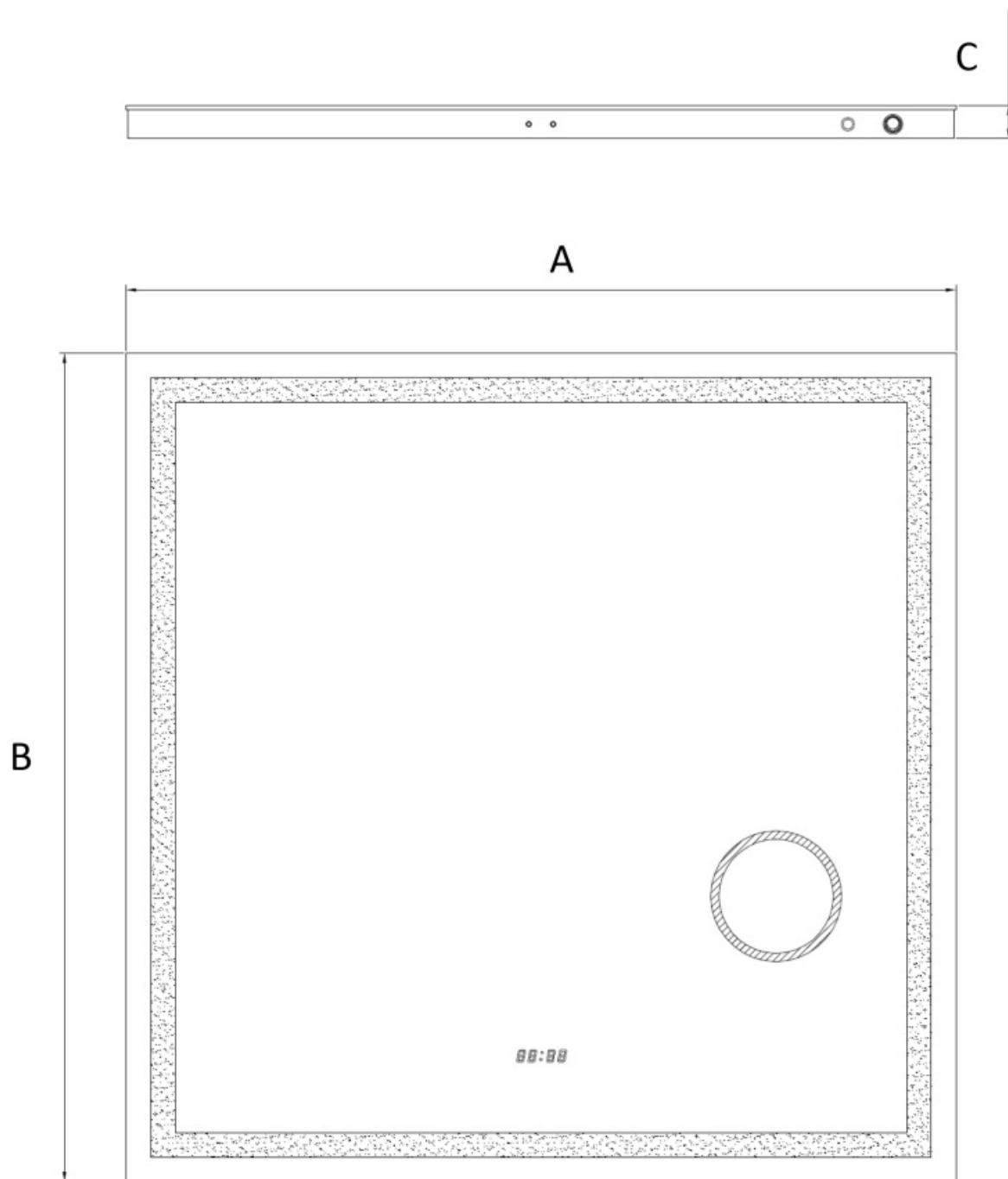
1. For drywall installation, mark the hole locations and drill CD 6mm holes for the drywall anchors. Install a junction box behind the mirror for power connections.
2. Insert provided drywall anchors.
3. Install the mounting bracket.



4. You may hardwire both cables to the same power supply. Connect the on/off switch to the white cable (Main) if one is used. A separate power supply is required for the Clock (black cable).
5. Hang the mirror to the wall and make sure the bracket in the back of the mirror lineup with the mounting bracket properly.
6. Press the mirror down slightly and make sure the brackets fit properly.

- Using the wall studs to hang the mirror is highly recommended.
- This mirror is NOT designed to work with a dimmable wall switch. Before fixing the mounting location, please make sure there is no interference to the IR sensor. It requires a minimum clearance of 4-1/2" and will not function normally when interference occurs. Measure from the top of the backsplash if one is used. Remove the objects in vicinity or relocate the mirror and try again.

INSTALLATION DIMENSIONS



Model #	A	B	C
MM4040LED MR	40	40	1 5/8
MM4835LED MR	48	35	1 5/8
MM5636LED MR	56	36	1 5/8
MM6028LED MR	60	28	1 5/8

BASIC OPERATION

1. Rocker switch

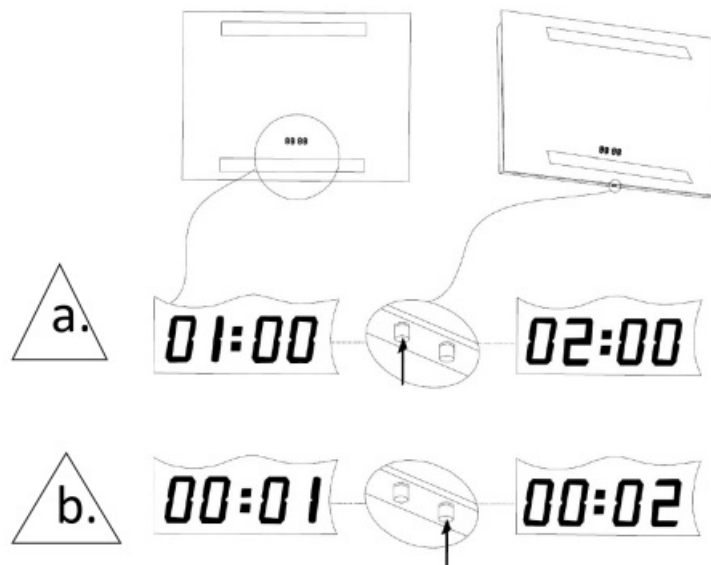
1. Turn switch to < I > position; lights can be controlled by the IR sensor.
2. Turn switch to < 0 > position to turn off the lights.
3. Turn switch to < 11 > position to turn on the lights.

2. Dimmable IR sensor

- Turn the Rocker switch to < I > position to activate the IR sensor.
 - Move your hand across the IR sensor to turn the lights on or off.
 - The distance between your hand and the sensor should be approx. 1".
 - To adjust the brightness of the lights, turn on the lights with the IR sensor. Place your hand in front of the sensor until the desirable brightness has reached and move your hand away from the sensor.
 - If the lights flicker, the level of brightness might be too low; try to adjust the brightness to a higher level.
- IR sensor requires a minimum clearance of 4-1/2" and will not function normally when interference occurs. Remove the objects in the vicinity or relocate the mirror and try again.

3. Setting the clock

- To change the hour, press the dial on the left.
- To change the minute press the dial on the right.



- If the clock is flashing and not responding to the setting dials, cut off the power through the circuit breaker and wait for at least 30 seconds before turning it back on.

CARE AND MAINTENANCE

Clean the mirror with a soft, damp cloth and dry thoroughly with a soft towel. Do NOT allow the edges of the mirror to get or remain wet over a period of time. Please do NOT use glass cleaner that contains ammonia or vinegar. Never spray any cleaner directly onto a mirror. Instead apply the cleaner to a soft cloth and then wipe the mirror. Make sure no commercial cleaner comes in contact with the edge or backing.

WARRANTY

DEFECTIVE GOODS CONSUMER WARRANTY

MISENO inspects all of its products before shipment. We offer a 5-year Limited warranty on our electric mirror products. Defective products should be returned to place of purchase for replacement. However, if this is not possible, we accept returns on defective product with our written authorization. Returns will be handled by product replacement. Defects or damage caused to the product by the consumer are not accepted.

SHORTAGE OR DAMAGED PRODUCTS

All shipments are carefully inspected and counted before leaving our distribution centers. Please inspect carefully on receipt of merchandise, noting any discrepancy or damage on the carrier's freight bill at that time, and file a claim with the carrier within 10 days from receipt of order. Then contact our office. Deductions from invoices for

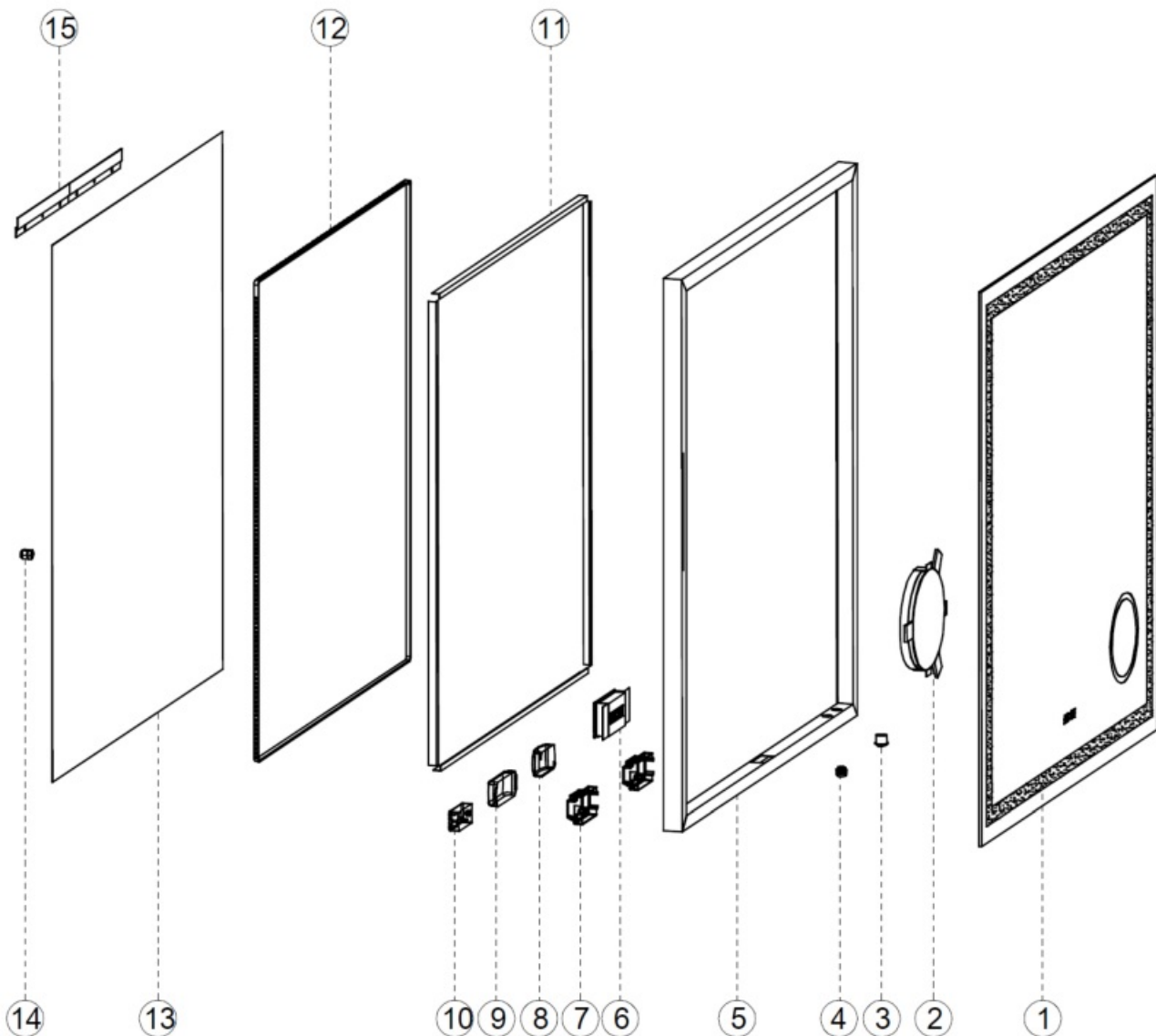
shortages or damage claims will not be allowed.

RETURN NEW GOODS

All claims for returns or adjustments must have prior approval and return authorization (RGA) number. Only original, sealed product in salable condition are eligible for return. Credit for authorized returns will be issued at the net price paid for the product and subject to a 15% restocking/handling fee. Merchandise is to be returned via prepaid freight. All unauthorized returns will be refused or subject to a 25% restocking/handling fee.

REPLACEMENT PARTS

Part	Description
1	Mirror
2	Magnifier
3	Rocker Switch
4	Dimmable IR Sensor
5	Aluminum Frame
6	Clock Unit
7	Connection Box
8	Clock Driver
9	LED Driver
10	IR Sensor Driver
11	LED Strip Support
12	LED Strip
13	Galvanized Plate
14	Cable Gland
15	Mounting Bracket



Customer Service: (855) 480-2915 or infoservice@miseno.com

Documents / Resources

	<p>MISENO MM4040LEDMR LED Lighted Mirror with Built in Magnifier and Clock [pdf] User Guide</p> <p>MM4040LEDMR LED Lighted Mirror with Built in Magnifier and Clock, MM4040LEDMR, LED Lighted Mirror with Built in Magnifier and Clock, Built in Magnifier and Clock, Magnifier and Clock</p>
--	---

References

- [User Manual](#)

