

mis MT201D Robust Monitor Arm Instructions



Contents

1

MAG MT201D

2

BRAS DE MONITEUR ROBUSTE

2.1

INSTRUCTIONS OF SAFETY AND WARNINGS:

3

Documents / Resources

3.1

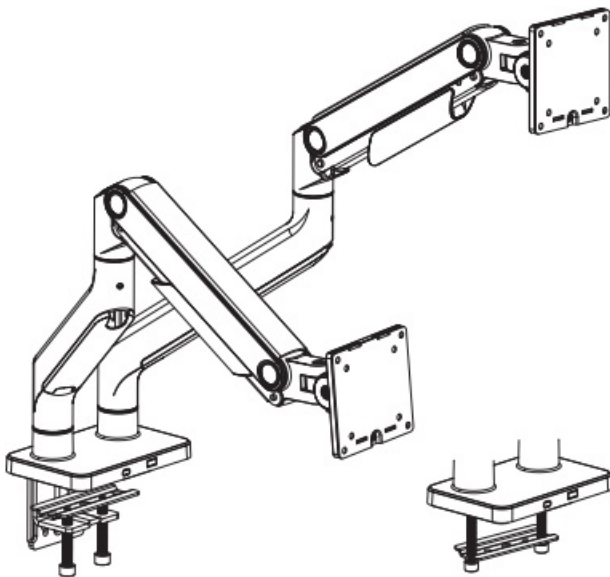
References

4


Related Posts

MAG MT201D

BRAS DE MONITEUR ROBUSTE



Compatible VESA 75 x 75 100 x 100	<div>45 po</div> <div>MAX</div> <div>PLAT/COURBÉ</div>	<div></div> <div>(2-20 kg) x 2 (4,4-44 lbs) x 2</div> <div>NOMINAL</div>
--------------------------------------	--	---

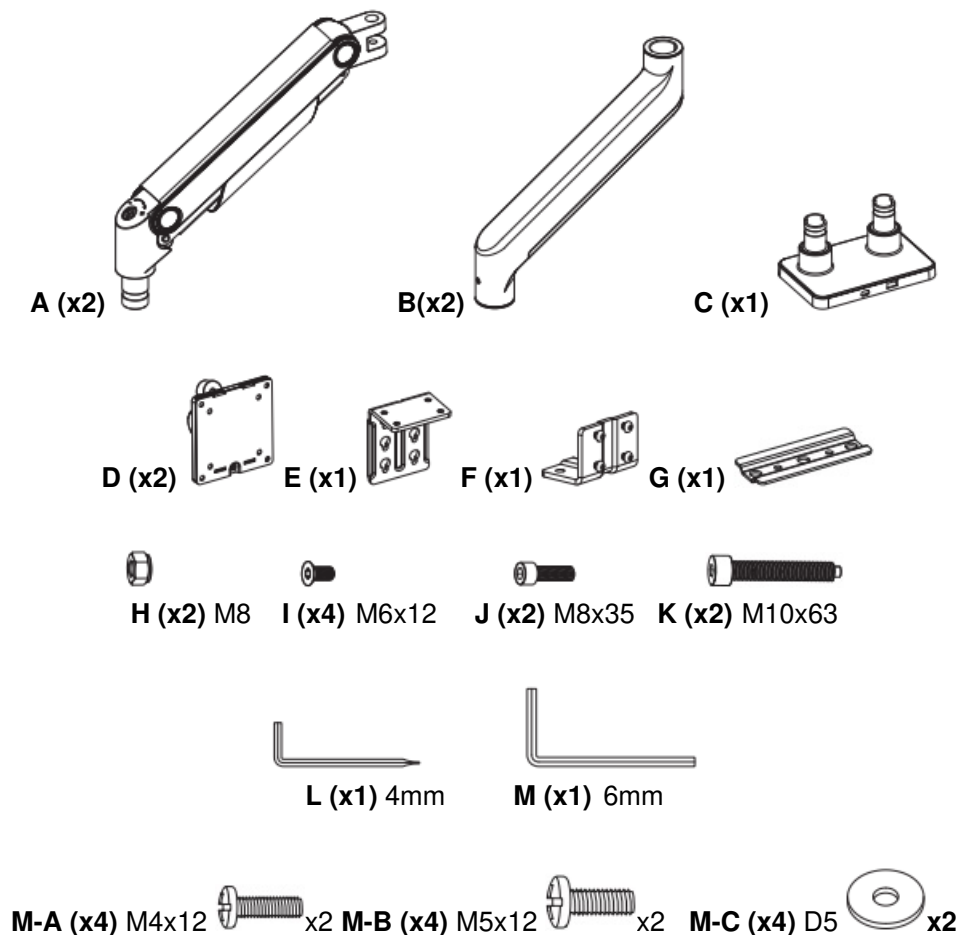
 **IMPORTANT:**

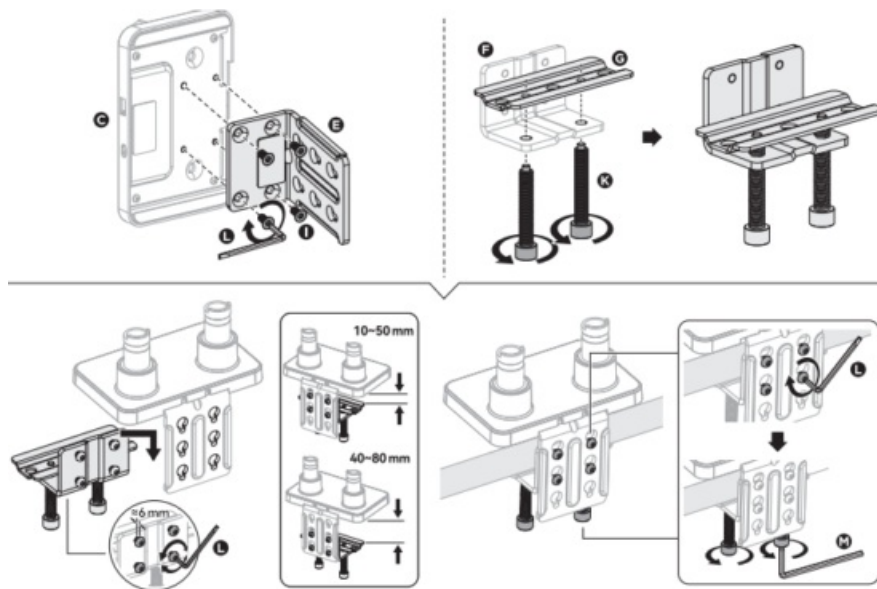
Failure to read, thoroughly understand, and follow all instructions can result in serious personal injury, damage to equipment, or voiding of factory warranty.

INSTRUCTIONS OF SAFETY AND WARNINGS:

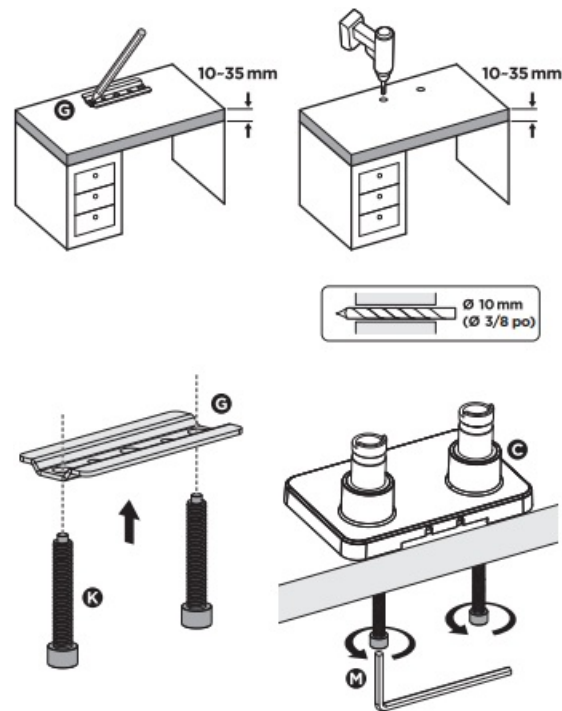
- Make sure that the mounting surface is strong enough to handle a mounted product and equipment.
- DO NOT EXCEED THE MAXIMUM LISTED WEIGHT CAPACITY.
- Always use an assistant or a mechanical lifting device to safely lift and position heavy products.
- Tighten screws firmly, but do not over tighten. Over tightening can cause product damage that greatly reduces the holding power.
- Keep a clear area and distance from moving parts when using the product.
- Use only as intended. Never stand, hang or climb on the product.
- This product is intended for indoor use only
- Any attempts to reconstruct the construction aren't allowed.
- This product may contain small items that could be a choking hazard if swallowed. Keep children away unless the product is intended for their use and all instructions and manuals are fully reviewed and understood by them.
- Check that the product is secure and safe to use at regular intervals (at least every three months).

Should you ever have any questions or feel you require help please contact your place of purchase for assistance.

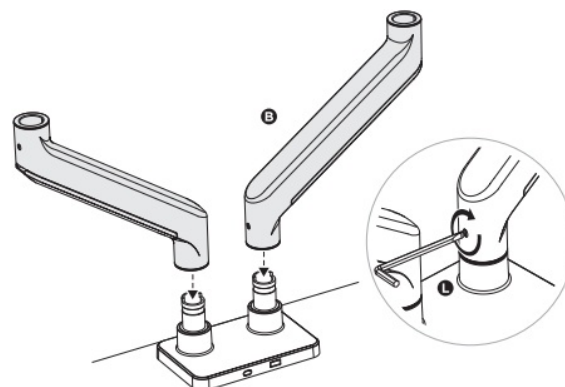


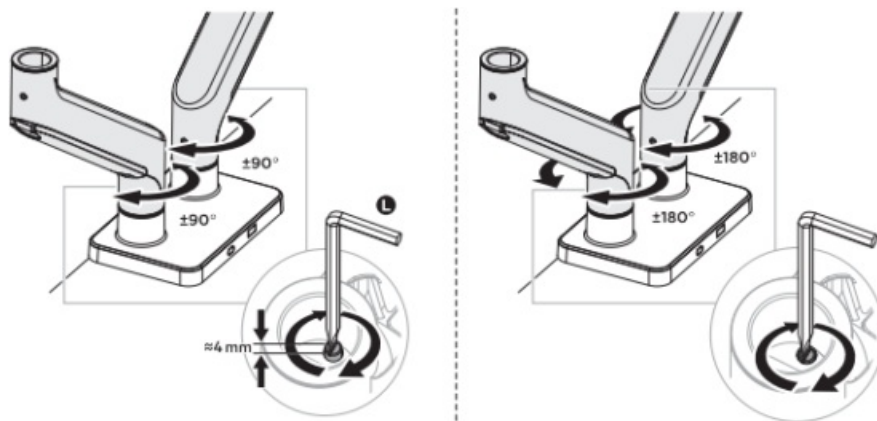


1b

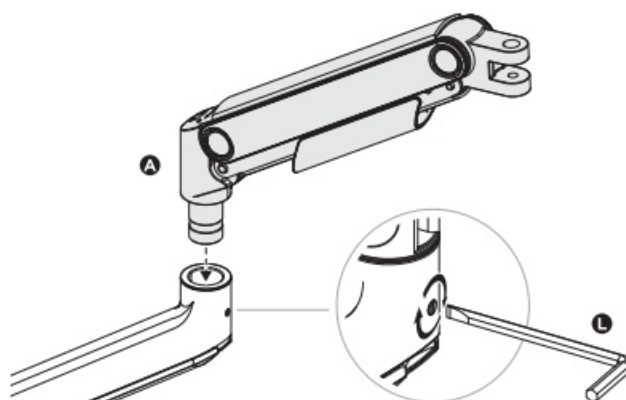


2

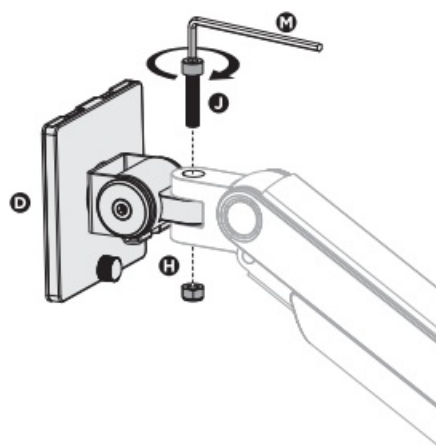




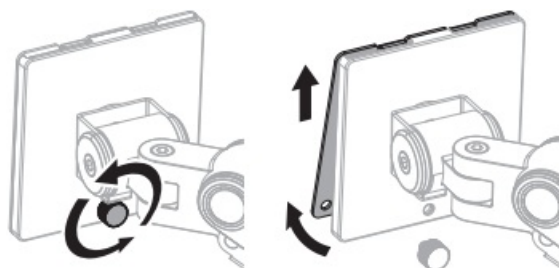
3



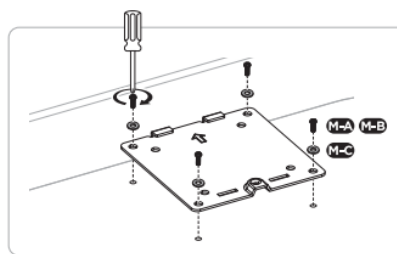
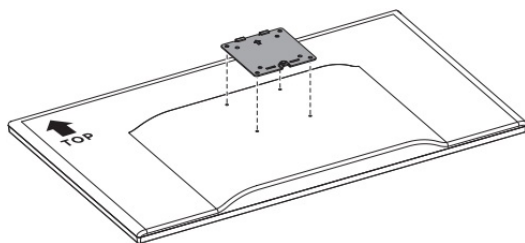
4



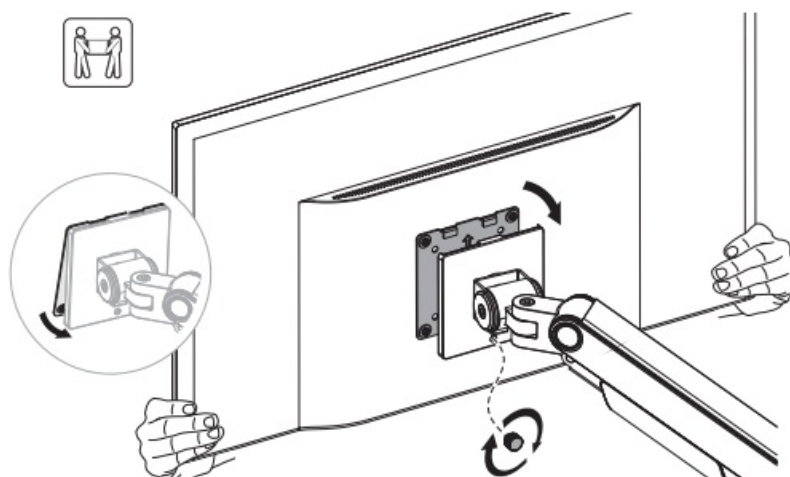
5



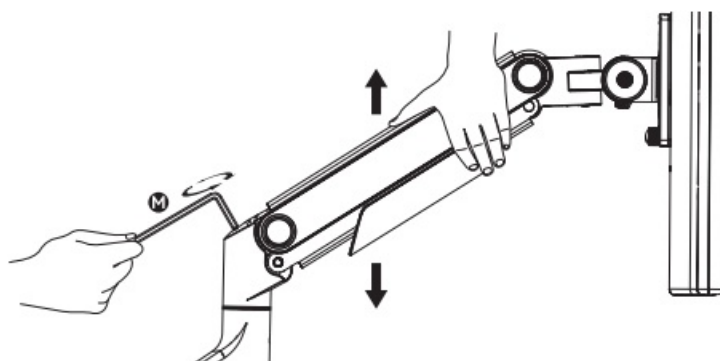
6



7



8



To properly balance the arm with the monitor stand, adjust the spring tension using the supplied Allen key as follows:

First, position and hold the arm firmly horizontally as shown. Ask for help if you need it.



CAUTION: To avoid damage to the monitor or stand, always keep the arm in a horizontal position when making adjustments. Again, ask for help if necessary.



If the arm **falls**, turn the adjustment screw in counterclockwise until it remains in a horizontal position.

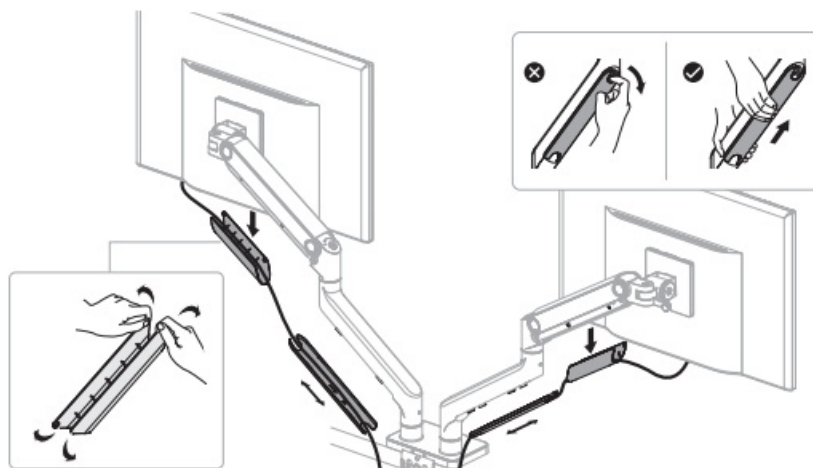


If the arm **lifts**, turn the adjustment screw clockwise until it remains in the horizontal position.

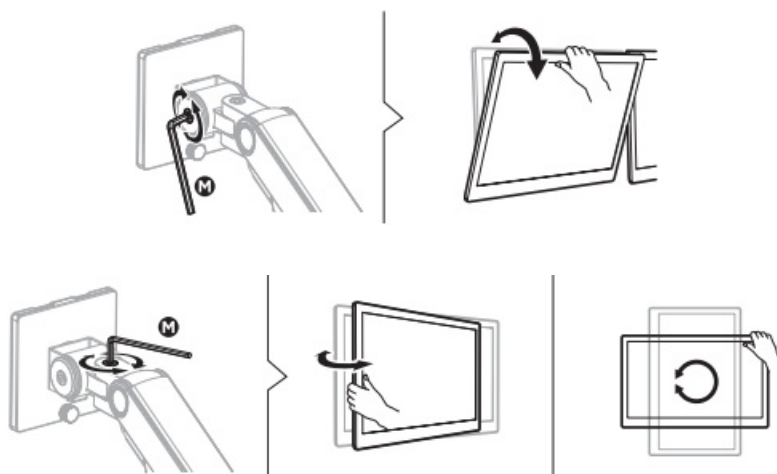


ATTENTION:
DO NOT overtighten the screws

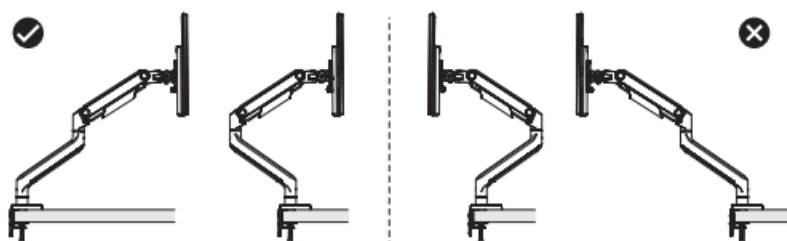
9



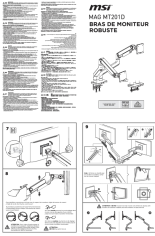
Note: If the screen does not stop to the desired position, tighten screws as shown.



CAUTION: DO NOT turn the moniro arms towards the back of the desk in order to to avoid an unstable situation that could lead to a tip over.



Documents / Resources



[mis MT201D Robust Monitor Arm](#) [pdf] Instructions
306-3BA9110-LAX, LDT74-C024, MT201D Robust Monitor Arm, MT201D, Robust Monitor Arm, Monitor Arm, Arm

References

- [User Manual](#)

[Manuals+.](#) [Privacy Policy](#)

This website is an independent publication and is neither affiliated with nor endorsed by any of the trademark owners. The "Bluetooth®" word mark and logos are registered trademarks owned by Bluetooth SIG, Inc. The "Wi-Fi®" word mark and logos are registered trademarks owned by the Wi-Fi Alliance. Any use of these marks on this website does not imply any affiliation with or endorsement.