

Miro Well-Architected Framework Reviews Instructions

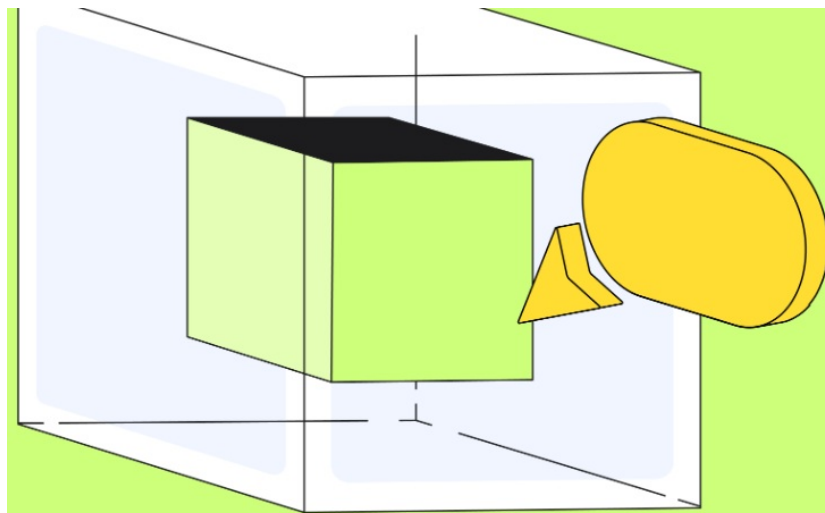
[Home](#) » [miro](#) » Miro Well-Architected Framework Reviews Instructions 

Contents

- 1 Miro Well-Architected Framework Reviews
- 2 Product Usage Instructions
- 3 Turbocharge your Well- Architected Framework Reviews with Miro
- 4 Enable collaborative diagramming with Miro's AWS Shape Packs
- 5 Automatically compile risks with Miro's AWS Well- Architected Tool
- 6 Instantly estimate architecture cost with Miro's AWS Cost Calculator
- 7 Keep everything in a single source of truth with Miro as a project hub
- 8 Documents / Resources
 - 8.1 References



Miro Well-Architected Framework Reviews



Specifications:

- **Product Name:** Miro
- **Features:** Visual workspace for innovation, collaboration tools, AWS integrations, architecture diagramming, project management solutions
- **Compatibility:** Works with distributed teams of any size
- **Availability:** Available on AWS Marketplace

Product Usage Instructions

1. Collaborative Diagramming with AWS Shape Packs:

Use Miro's AWS Shape Packs to collaborate on AWS architecture creation in real-time. This feature helps in cross-functional diagram creation within the Miro board.

2. Automatic Risk Compilation with AWS Well-Architected Tool:

Miro's AWS Well-Architected Tool automatically compiles risks from the AWS console onto your Miro board. Color-coded risks appear with mitigation suggestions for efficient risk management.

3. Architecture Cost Estimation with AWS Cost Calculator:

Utilize Miro's AWS Cost Calculator to estimate the cost of the architecture hourly, monthly, and yearly. Adjust configurations in real-time to optimize service usage.

4. Project Management and Collaboration:

Leverage Miro as a project hub for eliminating siloed work. Use task tracking integrations, templates, and project management solutions for efficient project planning and execution.

Frequently Asked Questions (FAQ):

• Q: Is Miro compatible with all sizes of distributed teams?

A: Yes, Miro is designed to empower distributed teams of any size to collaborate effectively.

• Q: Can I import existing architecture diagrams into Miro?

A: Yes, you can import existing architecture from draw.io instantly with Miro's free draw.io integration.

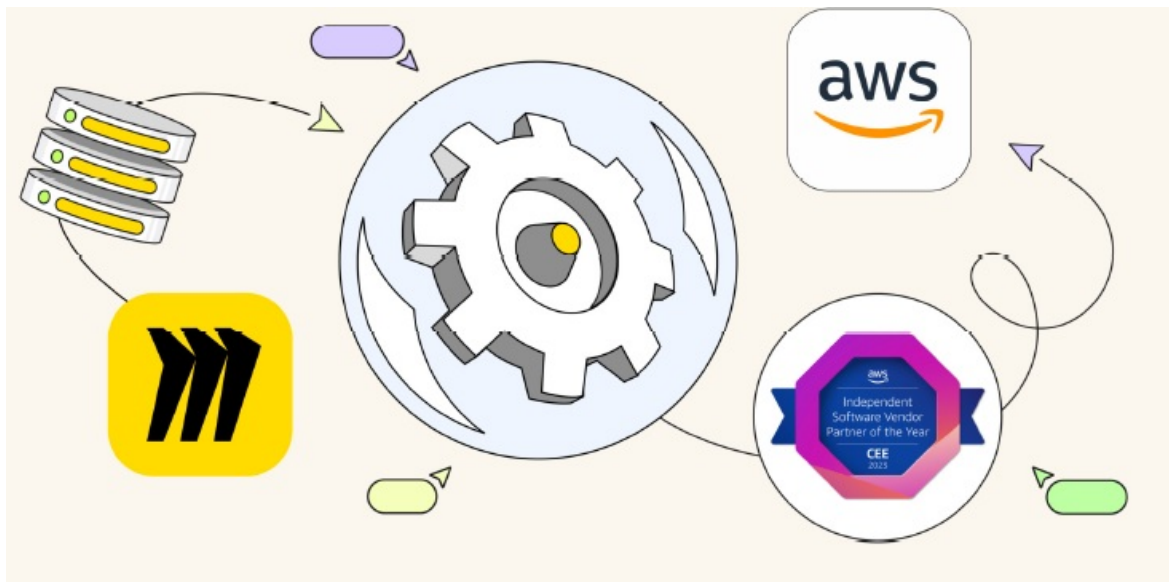
• Q: How does Miro help in estimating architecture costs?

A: Miro's AWS Cost Calculator provides instant estimates of architecture costs, allowing you to make faster and informed decisions.

• Q: Is Miro integrated with popular project management tools?

A: Yes, Miro offers two-way integrations with popular project management tools for seamless task tracking and document embedding.

Turbocharge your Well- Architected Framework Reviews with Miro



- At Miro, our mission is to empower teams to create the next big thing. Miro provides a visual workspace for innovation that enables distributed teams of any size to dream, design, and build the future together.
- Miro and AWS have created new integrations and features for better visualization, optimization, and Well-Architected Framework Reviews in a single workspace. This helps you complete reviews faster, earn more AWS credits, and win more clients.

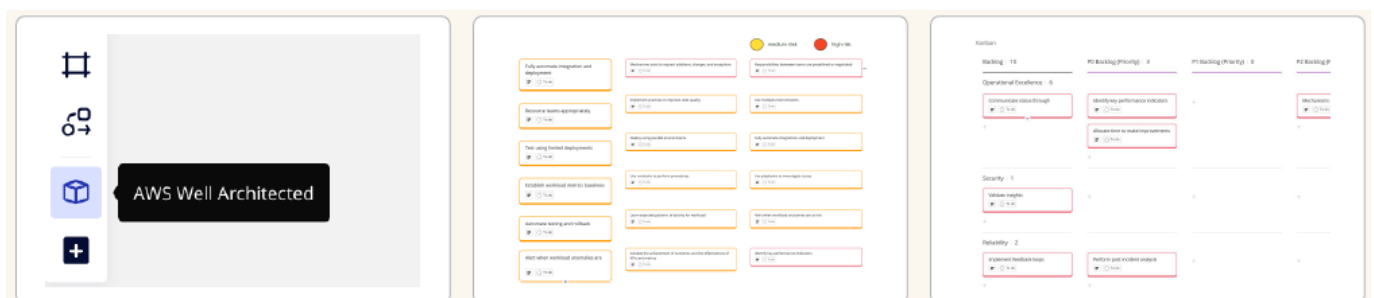
Enable collaborative diagramming with Miro's AWS Shape Packs



Alleviate the pain of siloed diagramming by collaborating on AWS architecture creation in Miro

- Leverage AWS Shape Packs to collaborate cross functionally on diagram creation in real time right within the Miro board.
- Import existing architecture from draw.io instantly with our free draw.io integration.

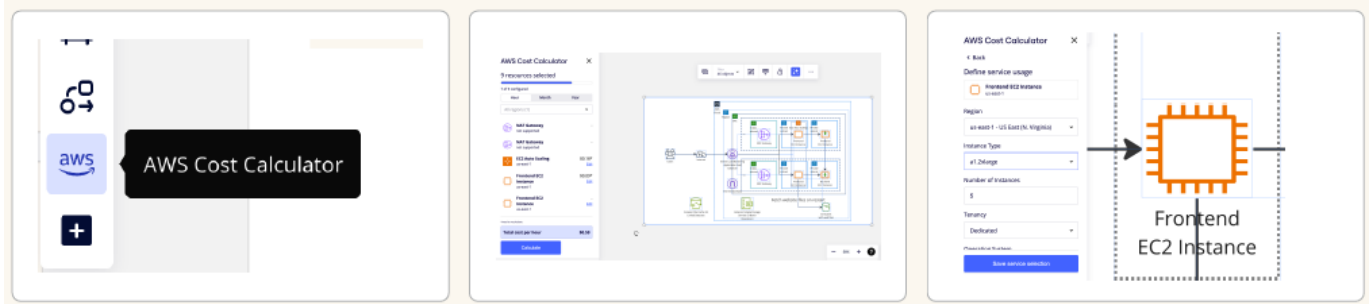
Automatically compile risks with Miro's AWS Well- Architected Tool



Say goodbye to manual compiling and human error saving you time while removing risks

- Color-coded risks automatically appear on your Miro board from the AWS console complete with risk mitigation suggestions.
- Instantly move risks into project management tools like a KanBan on the board for efficient project planning in a single source of truth.

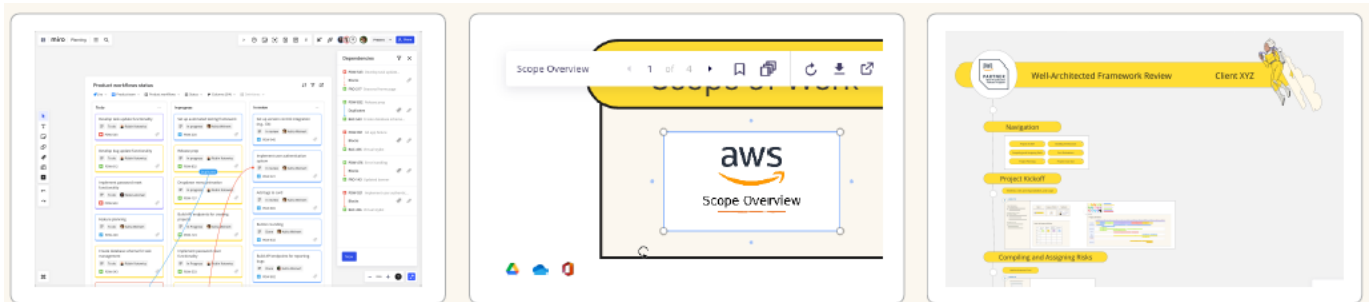
Instantly estimate architecture cost with Miro's AWS Cost Calculator



Remove manual architecture cost calculations, saving you time and enabling faster decision-making.

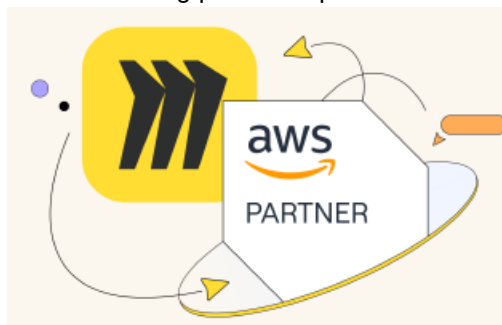
- Simply highlight AWS architecture on the board with Miro's AWS Cost Calculator to get an estimate of the hourly, monthly, and yearly cost of the architecture.
- Adjust configurations in real time to ensure the proper service usage.

Keep everything in a single source of truth with Miro as a project hub



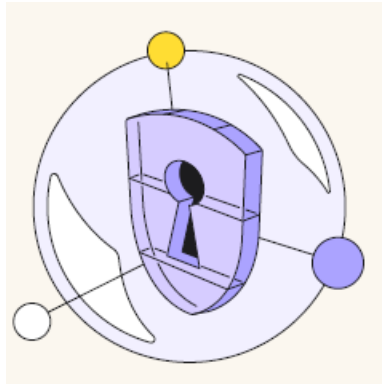
- Bring task tracking together with Miro's two-way integrations with popular project management tools.
- Embed crucial documents.
- Leverage pre-built templates or create your own to reduce time needed to set up future engagements.

Better together: Miro and AWS have built a strong partnership focused on driving innovation for your team



- **Built on Strong Foundations**

AWS provides the infrastructure and security for Miro, making it the platform of choice for 99% of Fortune 100 companies.



- **Constant Collaboration**

Miro is part of the AWS Partner Network and available on the AWS Marketplace. We're also working closely with AWS to bring innovative new workflows to your teams.



- **Partner of the Year**

Miro is the 2023 CEE ISV Partner of the Year award winner, in recognition of our commitment to building software that shapes the future.





[Miro Well-Architected Framework Reviews](#) [pdf] Instructions

Well-Architected Framework Reviews, Well-Architected Framework Reviews, Architected Framework Reviews, Framework Reviews, Reviews

References

- [📄 Flowchart Maker & Online Diagram Software](#)
- [📄 Free Kanban Tool for Workflow Management | Miro](#)
- [📄 AWS Cost Calculator + Miro | Team Collaboration Apps Marketplace](#)
- [📄 AWS Icons + Miro | Team Collaboration Apps Marketplace](#)
- [📄 Draw.io + Miro | Team Collaboration Apps Marketplace](#)
- [User Manual](#)

[Manuals+.](#) [Privacy Policy](#)

This website is an independent publication and is neither affiliated with nor endorsed by any of the trademark owners. The "Bluetooth®" word mark and logos are registered trademarks owned by Bluetooth SIG, Inc. The "Wi-Fi®" word mark and logos are registered trademarks owned by the Wi-Fi Alliance. Any use of these marks on this website does not imply any affiliation with or endorsement.