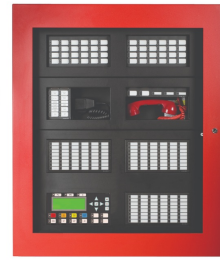




RPL-FX-2009-DF Fire Alarm
Control Panel



Mircom RPL-FX-2009-DF Fire Alarm Control Panel Installation Guide

[Home](#) » [Mircom](#) » Mircom RPL-FX-2009-DF Fire Alarm Control Panel Installation Guide 

Contents

- [1 Mircom RPL-FX-2009-DF Fire Alarm Control Panel](#)
- [2 Specifications](#)
- [3 Contents of the Kit](#)
- [4 Installation](#)
- [5 LED Mapping](#)
- [6 FAQs](#)
- [7 Documents / Resources](#)
 - [7.1 References](#)



Mircom RPL-FX-2009-DF Fire Alarm Control Panel



Specifications

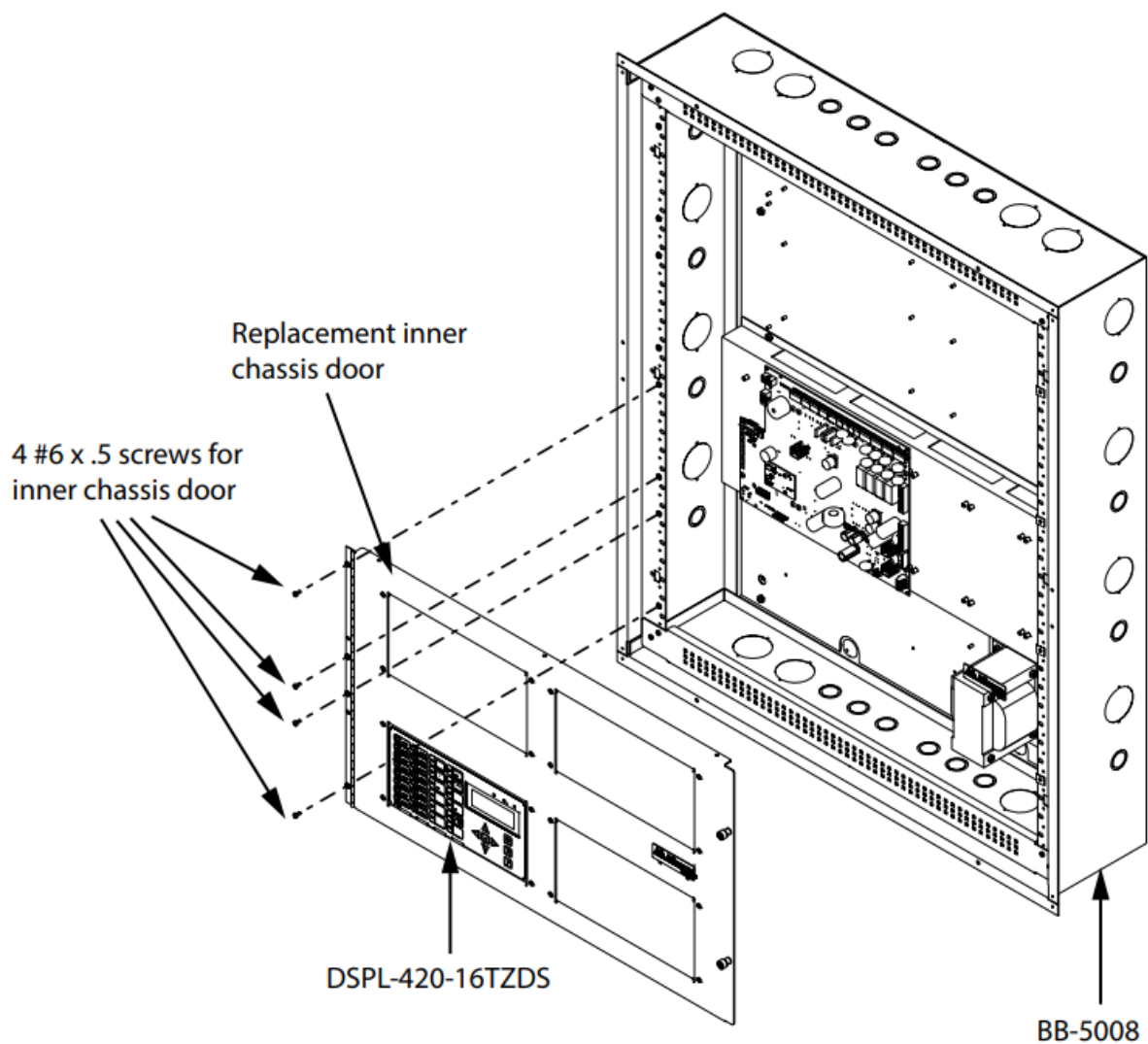
- Model: RPL-FX-2009-DF
- Compatible with Mircom FX-2000 Fire Alarm Control Panel
- Includes: Replacement inner chassis door, 4 #6 x .5 screws for inner chassis door, DSPL-420-16TZDS, BB-5008

Contents of the Kit

- The kit includes a replacement inner chassis door and 4 #6 x .5 screws for the inner chassis door.
- Also included are DSPL-420-16TZDS and BB-5008 components.
- Replacement inner chassis door with DSPL-420-16TZDS and 3 dead front covers mounted

Installation

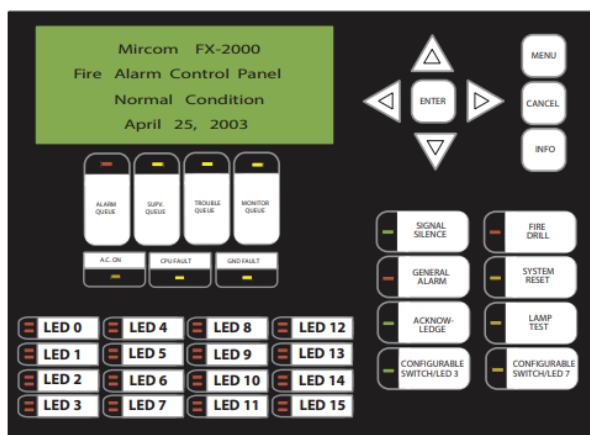
Follow these steps to install the RPL-FX-2009-DF:



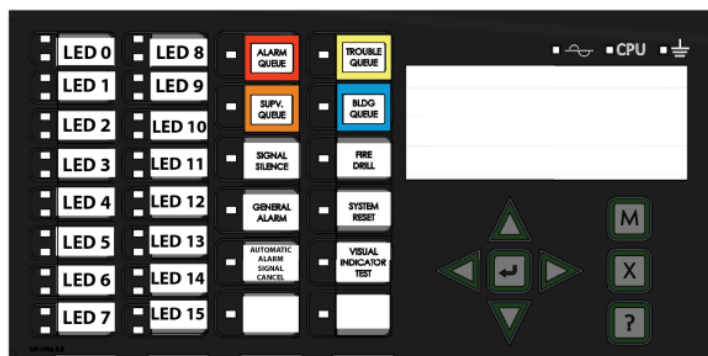
1. Remove the old inner chassis door.
2. Securely attach the replacement inner chassis door using the provided screws.
3. Ensure all components are properly connected.

LED Mapping

The LEDs on the old and new displays are mapped as follows:



Old Display



New Display

FAQs

Q: How do I reset the Mircom FX-2000 Fire Alarm Control Panel?

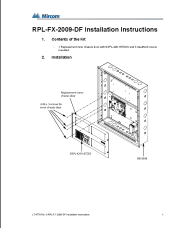
A: To reset the panel, press the SYSTEM RESET button on the new display.

Q: What should I do if I encounter a CPU fault indication?

A: If you see a CPU fault indication, contact customer support for assistance.

LT-6778 Rev 0 RPL-FX-2009-DF Installation Instructions

Documents / Resources

	<p>Mircom RPL-FX-2009-DF Fire Alarm Control Panel [pdf] Installation Guide LT-6778, DSPL-420-16TZDS, BB-5008, RPL-FX-2009-DF Fire Alarm Control Panel, RPL-FX-2009-DF, Fire Alarm Control Panel, Alarm Control Panel, Control Panel, Panel</p>
---	--

References

- [User Manual](#)

[Manuals+](#), [Privacy Policy](#)

This website is an independent publication and is neither affiliated with nor endorsed by any of the trademark owners. The "Bluetooth®" word mark and logos are registered trademarks owned by Bluetooth SIG, Inc. The "Wi-Fi®" word mark and logos are registered trademarks owned by the Wi-Fi Alliance. Any use of these marks on this website does not imply any affiliation with or endorsement.