



MiraScreen G130RX Wireless Presentation Receiver User Manual

[Home](#) » [MiraScreen](#) » MiraScreen G130RX Wireless Presentation Receiver User Manual 



Wireless HD Transmitter & Receiver Kit
User manual

Ver. A 1.0

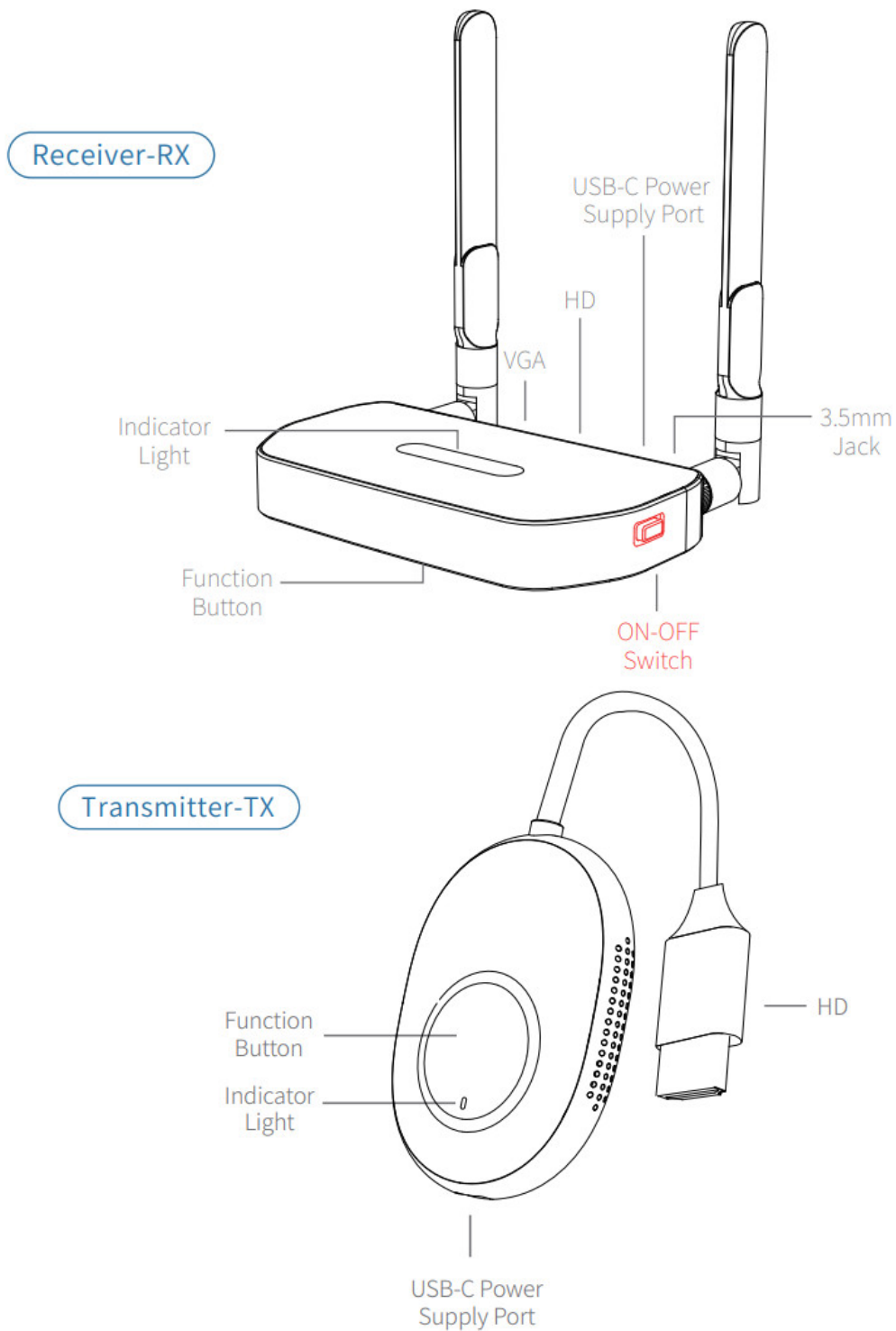
Preface

Thank you for purchasing the MiraScreen products, For optimum operation, please read this manual carefully before use.

Contents

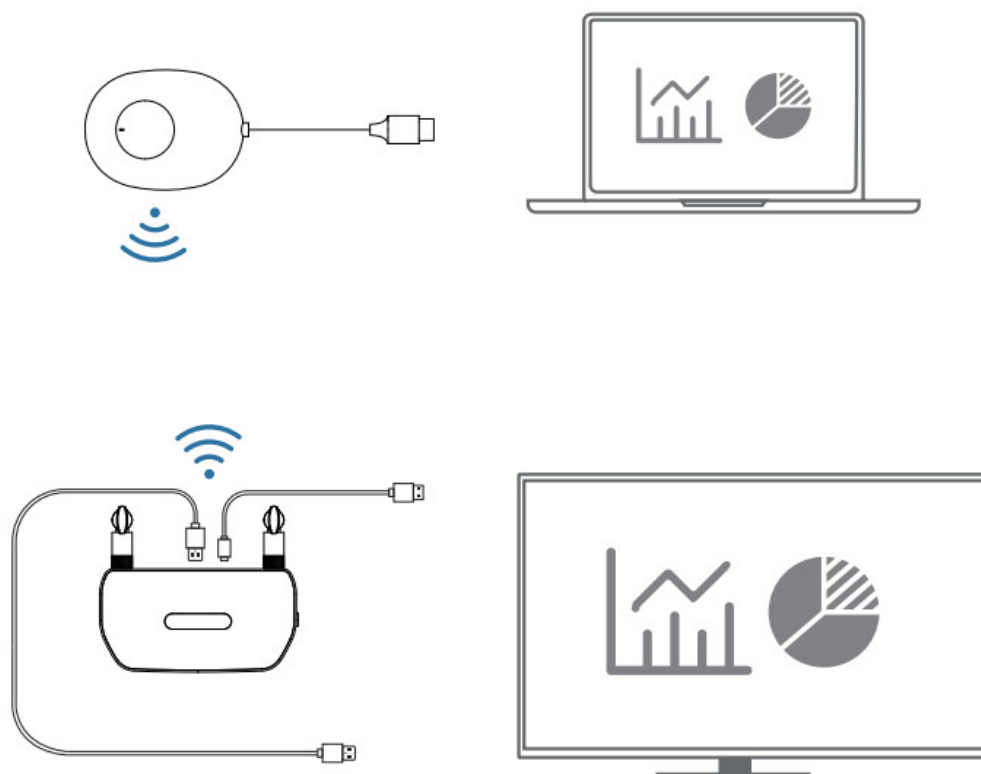
- [1 Connection Diagram](#)
- [2 Hardware Casting](#)
- [3 Pairing Instructions](#)
- [4 Function Settings](#)
- [5 Software Casting](#)
- [6 Documents / Resources](#)
- [7 Related Posts](#)

Connection Diagram



Hardware Casting

Combination of receiver and transmitter, plug and play

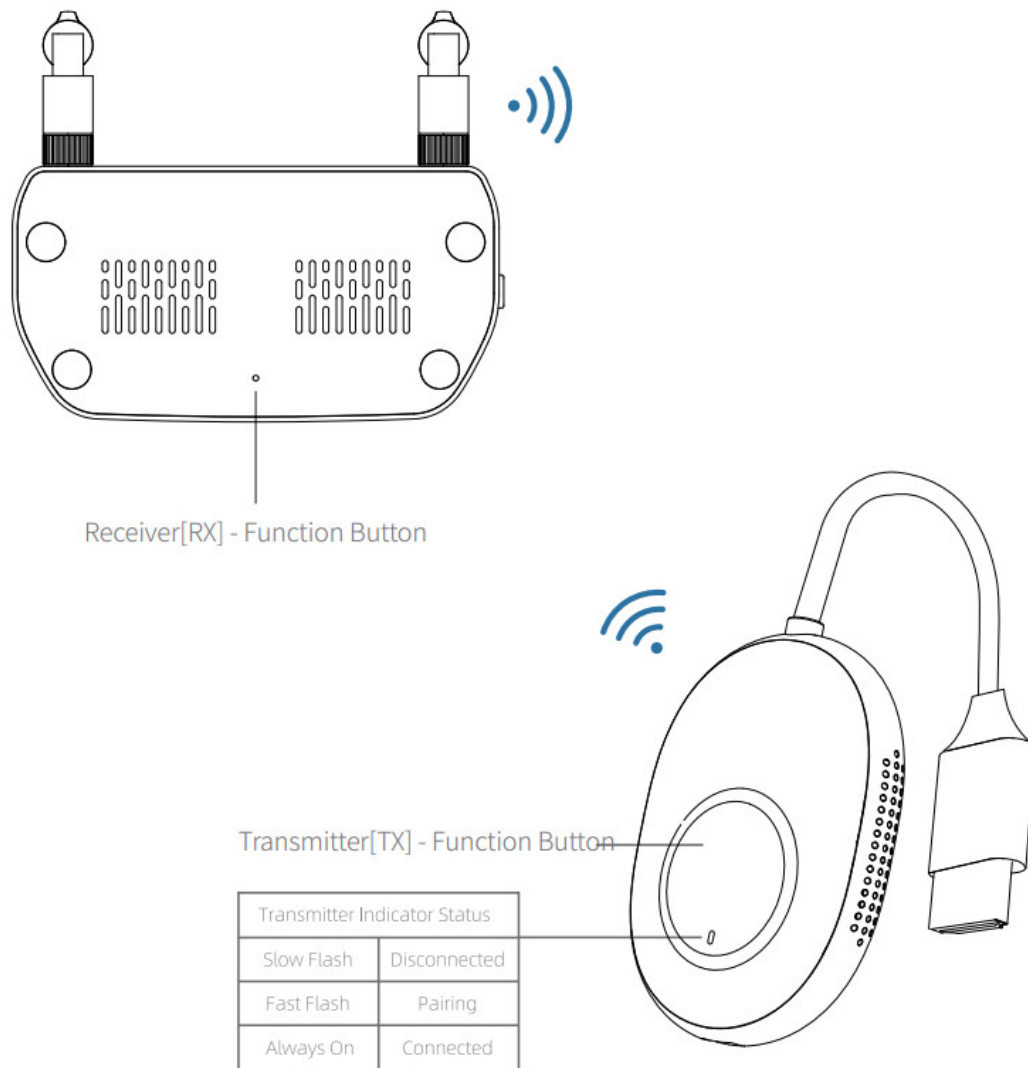


1. Connect the HD port or VGA port of the receiver to the video input port of the display device such as the monitor or TV.
2. Connect the USB-C power supply port of the receiver to the charging cable and plug it into the power adapter (Voltage above 5V, current above 2A). Turn on the Receiver power switch.
3. Adjust the HD Signal source of the monitor or TV to the corresponding HD port until the boot screen is displayed.
4. Connect the transmitter to the computer or other devices With HD video output function. After the indicator light enters the fast flash state, Wait for ten seconds to complete Casting.

*Please make sure that the power of the computer is sufficient. If the power supply of the computer is insufficient or HD is unable to supply power, please connect the transmitter to the power adapter or USB-C power supply port (Voltage above 5V, current above 2A)

Pairing Instructions

The product has been paired out of the factory. In case of pairing failure due to improper operation or other circumstances during use, it is necessary to restore and repair the device as follows:



1. Please Press the receiver function button for more than 3 seconds, and the prompt will pop up on the interface. Release the button to pair With Ezcast TX. Wait for the transmitter to enter pairing mode.
2. Press the transmitter function button for more than 3 seconds, the indicator will flash for pairing, and Wait for the transmitter indicator to be always on, indicating that the connection is successful.

* With one receiver and multiple transmitters, 1 receiver can pair with 8 transmitters for switching.

Function Settings

1. Search for a receiver in Wireless Network (Name is MiraScreen-XXXX, default password is 12345678)
2. Open the mobile/tablet browser and enter 192.168.203.1 in the address bar
3. After entering the website, you can operate the distribution network, resolution, upgrade and restart

Software Casting

When the receiver is used alone, it needs to cooperate with the software in the mobile phone or computer. Complete the "Internet" distribution network in the **Function Settings**.

(Apple iOS System – Operation Steps)

Slide the screen to enter the Apple Device Control Center, click Airplay, and check the MiraScreen device.

Android System – Operation Steps

1. Turn on the screencasting function in the mobile phone/tablet
2. Search and connect to MiraScreen device

Different brand screen casting function path reference

HUAWEI: Setting>Smart Assist>Multi-screen Interactive

Xiaomi: Settings-Connect and Share-Cast Screen

VIVO: Settings-Other connection methods-Smart screen

OPPO: Settings-Other connection methods-Smart screen

MEIZU: Setting>Display>Projection Screen

Lenovo: Setting Display>Wireless Display }

SAMSUNG: Phone From Top To Bottom>Smart View

Please contact service WeChat for more models and brands

Problem-solving

Q: How to restore factory settings?

A: When the product fails, press and hold the receiver function button for 10 seconds. After a black screen appears and restart, the factory settings will be restored.

Q: Can devices without an HD interface be used?

A: Yes, please use the device with an HD interface converter.

Q: How to enter privacy mode?

A: Tap the transmitter function button to disconnect or reconnect.

FCC Warning Statement

Changes or modifications not expressly approved by the party responsible for compliance could void the user's authority to operate the equipment. This equipment has been tested and found to comply with the limits for a Class B digital device, pursuant to Part 15 of the FCC Rules. These limits are designed to provide reasonable protection against harmful interference in a residential installation. This equipment generates uses and can radiate radio frequency energy and, if not installed and used in accordance with the instructions, may cause harmful interference to radio communications. However, there is no guarantee that interference will not occur in a particular installation. If this equipment does cause harmful interference to radio or television reception, which can be determined by turning the equipment off and on, the user is encouraged to try to correct the interference by one or more of the following measures:

- Reorient or relocate the receiving antenna.
- Increase the separation between the equipment and receiver.
- Connect the equipment into an outlet on a circuit different from that to which the receiver is connected.
- Consult the dealer or an experienced radio/TV technician for help.

This device complies with part 15 of the FCC Rules. Operation is subject to the following two conditions: (1) This device may not cause harmful interference, and (2) this device must accept any interference received, including interference that may cause undesired operation.

RF Exposure Statement

To maintain compliance with FCC's RF exposure guidelines, This equipment should be installed and operated with a minimum distance of 20cm the radiator your body. This device and its antenna(s) must not be co-located or operation in conjunction with any other antenna or transmitter.

Documents / Resources



[MiraScreen G130RX Wireless Presentation Receiver](#) [pdf] User Manual
G130RX, 2ALU5-G130RX, 2ALU5G130RX, G130RX Wireless Presentation Receiver, Wireless
Presentation Receiver, Presentation Receiver