



# MINOSTON MT10N 4 Hour Countdown Timer Switch User Manual

[Home](#) » [Minoston](#) » MINOSTON MT10N 4 Hour Countdown Timer Switch User Manual 



## Contents

- [1 MT10N 4 Hour Countdown Timer Switch](#)
- [2 Countdown Timer Switch](#)
- [3 Specifications:](#)
- [4 HOW TO INSTALL THE WIRES](#)
- [5 Single – pole wiring](#)
- [6 FCC warning:](#)
- [7 MEDICAL EQUIPMENT](#)
- [8 IMPORTANT SAFETY INSTRUCTIONS](#)
- [9 Documents / Resources](#)
  - [9.1 References](#)

**MT10N 4 Hour Countdown Timer Switch**



## Countdown Timer Switch

### Model — MT10N(NHT06)

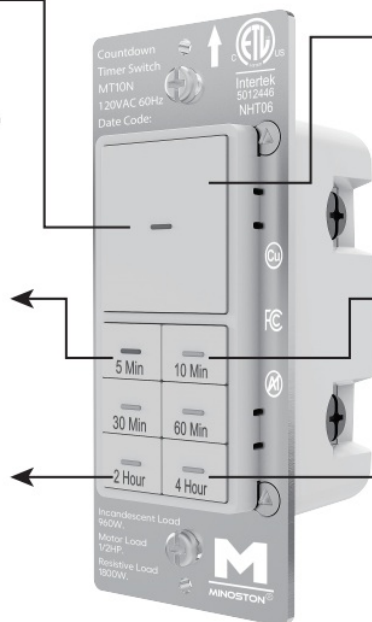
On/off override button  
Push any buttons below  
to set your countdown time  
(5min, 10min, 30min, 60min,  
2hour, 4hour)

\* The indicator of your last  
choice flashes by default.

Hold “5Min” button for 3s  
to turn off or resume 7 LED  
indicators.

Hold “2Hour” button for 3s  
to Dim LED indicators of all  
7buttons.

\* All LED indicators flash on  
minimum brightness.



- Hold the “on/off” button for 3s to exit from countdown mode.
- Push the “on/off” button to resume countdown mode.

Hold “10Min” button for 3s to Dim the LED indicator of on/off button.

Hold “4Hour” button for 3s to brighten LED indicators of all 7buttons.

\* All LED indicators flash on maximum brightness.



Switch x1

Wiring x1

## Specifications:

Power: 120VAC, 60Hz

Incandescent Load: 960W

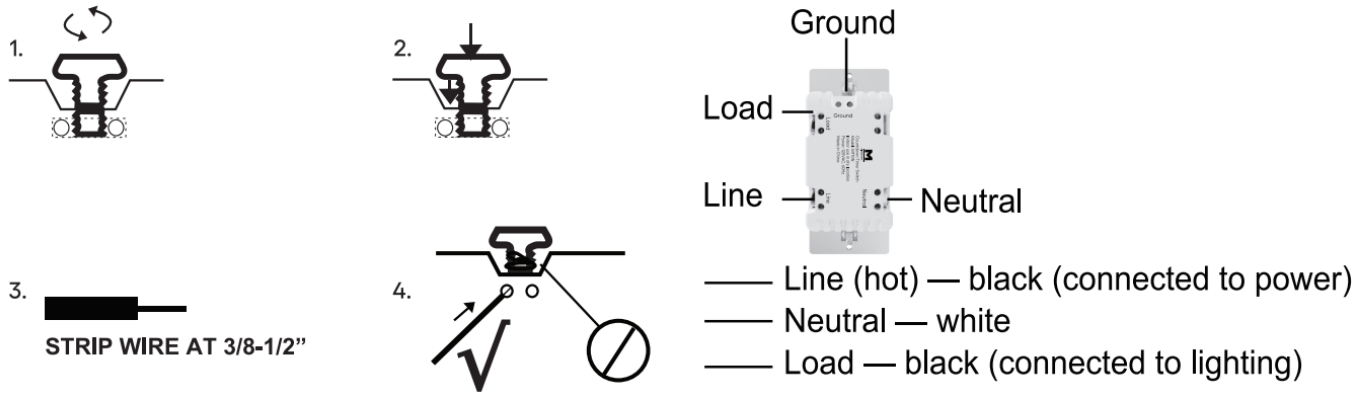
Motor Load 1/2HP

Resistive Load 1800W

Temperature Range: 32° F~104° F

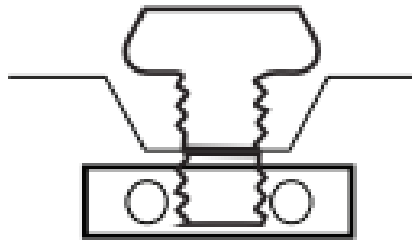
Time Delay: 5 Min / 10 Min / 30 Min / 60 Min / 2 Hour / 4 Hour

## HOW TO INSTALL THE WIRES



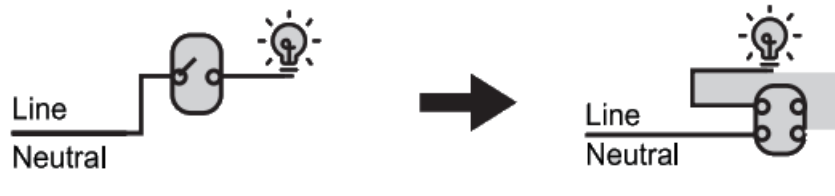
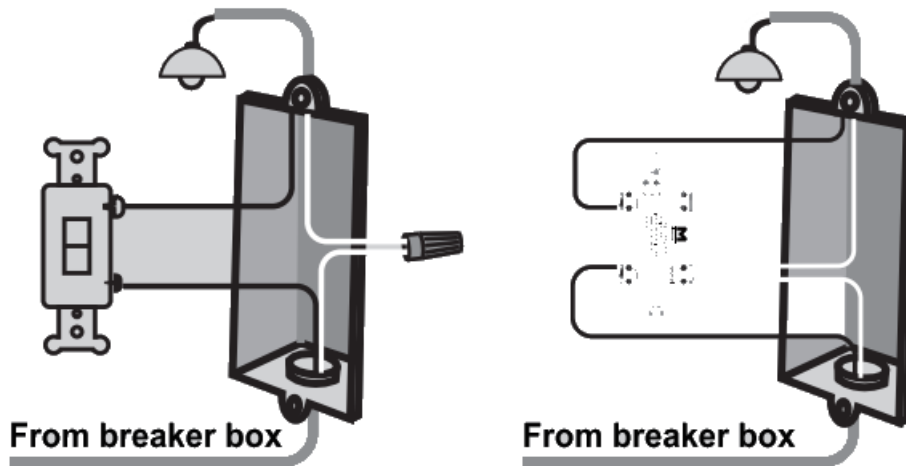
1. **Unscrew:** carefully turn the screw counterclockwise to leave enough space for the wire to be inserted. Do not unscrew the screws completely.
2. **Press down:** Once loosened, use your finger so it catches the thread,
3. **Insert the wire:** make sure the wire is completely straight, then insert it into the terminal while holding down the screw. Do not wrap the wire around the screw!
4. **Tighten:** Turn the screw clockwise to tighten the wire. Make sure the wires are locked!

**Note:** There are 2 holes for each terminal can be used in the connection.

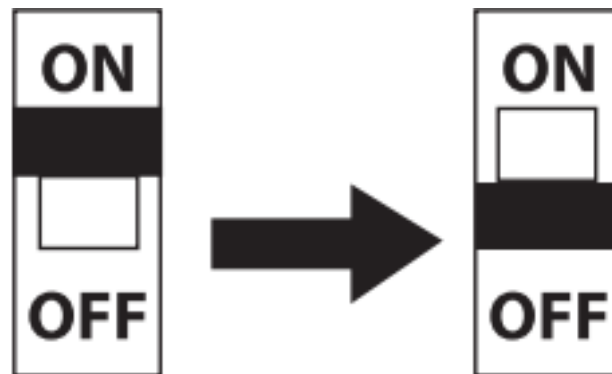


You can use a jump wire or the second hole at the terminal to connect.

### Single – pole wiring



1. Tool: Please prepare a flat head screwdriver.
2. Turn power OFF at circuit breaker or fuse box.



3. Remove wallplate.
4. Remove the switch mounting screws.
5. Disconnect the wires and label them after remove the old switch, (Please use our sticker)
6. Carefully remove the switch from the switch box. (DO NOT disconnect the wires.)
7. There are up to five screw terminals on the smart switch, these are marked (Please check <HOW TO INSTALL THE WIRES>)
8. Fix the wallplate with screws after wiring succeed, (Please use our screws.)
9. The Ground was excluded from the diagram to simplify the illustration. Please Make sure all ground wires are connected to all switches respectively.

**FCC warning:**

This device complies with Part 15 of the FCC Rules, Operation is subject to the following two conditions:

- (1) This device may not cause harmful interference,
  - (2) This device must accept any interference received, including interference that may cause undesired operation.
- changes or modifications not expressly approved by the party responsible for compliance could void the user's authority to operate the equipment.

**NOTE:**

This equipment has been tested and found to comply with the limits for a Class B digital device, pursuant to Part 15 of the FCC Rules. These limits are designed to provide reasonable protection against harmful interference in a residential installation. This equipment generates, uses and can radiate radio frequency energy and, if not installed and used in accordance with the instructions, may cause harmful interference to radio communications. However, there is no guarantee that interference will not occur in a particular installation. If this equipment does cause harmful interference to radio or television reception, which can be determined by turning the equipment off and on, the user is encouraged to try to correct the interference by one or more of the following measures:

- Reorient or relocate the receiving antenna.
- Increase the separation between the equipment and receiver.
- Connect the equipment into an outlet on a circuit different from that to which the receiver is receiver is connected.
- Consult the dealer or an experienced radio/TV technician for help.

**FCC Radiation Exposure Statement:**

This equipment complies with FCC radiation exposure limits set forth for an uncontrolled environment. This transmitter must not be cotocated or operating in conjunction with any other antenna or transmitter. This equipment should be installed and operated with minimum distance 20cm between the radiator& your body.

**CAUTION = PLEASE READ!**

This device is intended for instalation in accordance with the National Electric Code and local regulations in the United States, or the Canadian Electrical Code and local regulations in Canada, If you are unsure or uncomfortable about performing this installation consult a qualified electrician.

## **MEDICAL EQUIPMENT**

Please DO NOT use this plug to control Medical or Life Support equipment. This device should never be used to control the On/Off status of Medical and/or Life Support equipment,

**OTHER WARNINGS**

Risk of Fire / Risk of Electrical Shock / Risk of Burns

## **IMPORTANT SAFETY INSTRUCTIONS**

1. READ AND FOLLOW ALL SAFETY INSTRUCTIONS.
2. Read and follow all instructions that are on the product or provided with the product.
3. do not use an extension cord.
4. Reference the National Electrical Code, NFPA 70, specifically for the installation of wiring andclearances from power and lighting conductors,
5. Installation work and electrical wiring must be done by qualified person(s) in accordance with allapplicable codes and standards, including fire-rated construction.
6. do not install or use within 10 feet of a pool

**8 WARNING:**

Risk of Electric Shock,

When used outdoors, install only to a covered Class A GFCI protected receptacle that is weatherproof with the power unit connected to the receptacle. If one is not provided, contact a qualified electrician for proper installation. Ensure that the power unit andcord do not interfere with completely closing the receptacle cover.

**9. WARNING:**

Risk of Electric Shock, Mount the unit at a height greater than 1 foot from the ground surface

**10.WARNING:**

Risk of Electric fire. install only to a receptacle protected by 20A branch circuit over current protection.

**SAVE THESE INSTRUCTIONS** – this manual contains important safety and operating instructions.




If you have any questions, please contact us at  
Scan QR code or visit



<https://minoston.com/>  
[ask@minoston.com](mailto:ask@minoston.com) and [www.minoston.com](http://www.minoston.com)

---

## Documents / Resources

	<p><a href="#">MINOSTON MT10N 4 Hour Countdown Timer Switch</a> [pdf] User Manual MT10N 4 Hour Countdown Timer Switch, MT10N, 4 Hour Countdown Timer Switch, Countdown Timer Switch, Timer Switch</p>
---	---

## References

- [User Manual](#)