



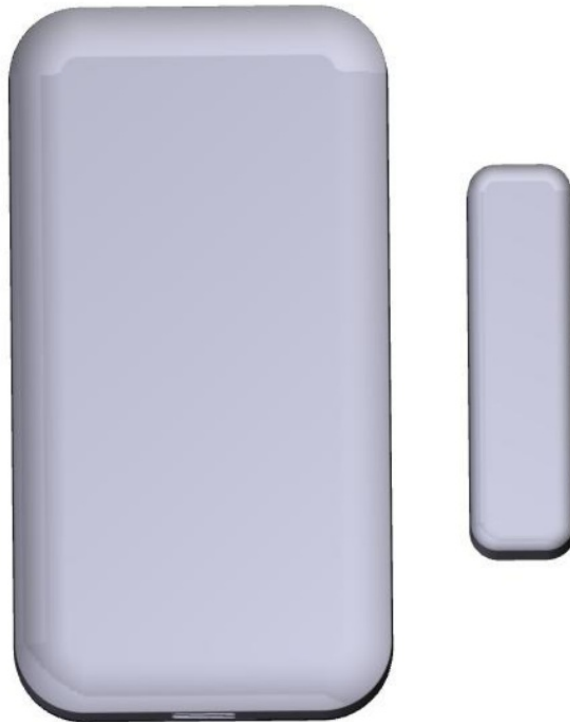
Minoston MSE30Z Z-Wave Plus Multipurpose Sensor User Manual

[Home](#) » [Minoston](#) » Minoston MSE30Z Z-Wave Plus Multipurpose Sensor User Manual 

Minoston®

**MSE30Z
Z-Wave Plus Multipurpose Sensor**

FEDERAL COMMUNICATIONS COMMISSION(FCC)STATEMENT FCC CautionThis device complies with part 15 of the FCC Rules. Operation is subject to the following two conditions: (1) This device may not cause harmful interference, and(2)this device must accept any interference received including interference that may cause undesired operation. Any changes or modifications not expressly approved by the party responsible for compliance could void the user's authority to operate the equipment. NOTE: This equipment has been tested and found to comply with the limits for a Class B digital device, pursuant to part 15 of the FCC RulesThese limits are designed to provide reasonable protection against harmful interference in a residential installation. This equipment generates uses and can radiate radio frequency energy and, if not installed and used in accordance with the instructions, may cause harmful interference to radio communications. However, there is no guarantee that interference will not occur in a particular installation. If this equipment does cause harmful interference to radio or television reception, which can be determined by turning the equipment off and on, the user is encouraged to try to correct the interference by one or more of the following measures: -Reorient or relocate the receiving antenna- Increase the separation between the equipment and receiver -Connect the equipment into an outlet on a circuit different from that to which the receiver is connected -Consult the dealer or an experienced radio / TV technician for help.



Contents

- [1 WARRANTY](#)
- [2 SPECIFICATIONS](#)
- [3 WARNING'](#)
- [4 Introduction:](#)
- [5 Key Features:](#)
- [6 Product Overview:](#)
- [7 Key function description Function](#)
- [8 Adding Your Device To A Hub](#)
- [9 QR CODE](#)
- [10 Command Class](#)
- [11 Z-Wave™ Configuration Parameters](#)
- [12 Support for Notification](#)
- [13 Basic Set Mapping](#)
- [14 Indicator Command Class](#)
- [15 Restoring Factory Defaults](#)
- [16 Documents / Resources](#)
- [17 Related Posts](#)

WARRANTY

Moston Products warrants this product to be free from manufacturing defects for a period of two years from the original date of consumer purchase. This warranty is limited to the repair or replacement of this product only and does not extend to consequential or incidental damage to other products that may be used with this product. This warranty is in lieu of all other warranties, expressed or implied. Some states do not allow limitations on how long an implied warranty lasts or permit the exclusion or limitation of incidental or consequential damage, so the above limitations may not apply to you. This warranty gives you specific rights, and you may also have other rights which vary from state to state. if the unit should prove defective within the warranty period.

SPECIFICATIONS

Model:MSE302 Power: CR2450 3V Signal (Frequency): 908.42 ME.

Range: Up to 100 feet line of sight between the Wireless Controller and the closest 2-Wave" receiver module.

Operating Temperature Range: 5-104° F (-10-40° C)

Specifications subject to change without notice due to continuing product improvement

Website: www.nie-tech.com

WARNING'

RISK OF FIRE RISK OF ELECTRICAL SHOCK RISK OF BURNS CONTROLLING APPLIANCES: EXERCISE EXTREME CAUTION WHEN USING Z -Wave" DEVICES TO CONTROL APPLIANCES. OPERATION OF THE Z-Wave DEVICE MAY BE IN A DIFFERENT ROOM THAN THE CONTROLLED APPLIANCE, ALSO ANUNINTENTIONAL ACTIVATION MAY OCCUR IF THE WRONG BUTTON ON THE REMOTE IS PRESSED. Z-Wave DEVICES MAY AUTOMATICALLY BE POWERED ON DUE TO TIMED EVENT PROGRAMMING. DEPENDING UPON THE APPLIANCE, THESE UNATTENDED OR UNINTENTIONAL OPERATIONS COULD POSSIBLY RESULT IN A HAZARDOUS CONDITION. FOR THESE REASONS, WE RECOMMEND DO NOT RETURN THIS PRODUCT TO THE STORE THE FOLLOWING: DO NOT USE Z -Wave" DEVICES TO CONTROL ELECTRIC HEATERS OR ANY OTHER APPLIANCES WHICH MAY PRESENT A HAZARDOUS CONDITION DUE TO UNATTENDED OR UNINTENTIONAL OR AUTOMATIC POWER ON CONTROL.

Introduction:

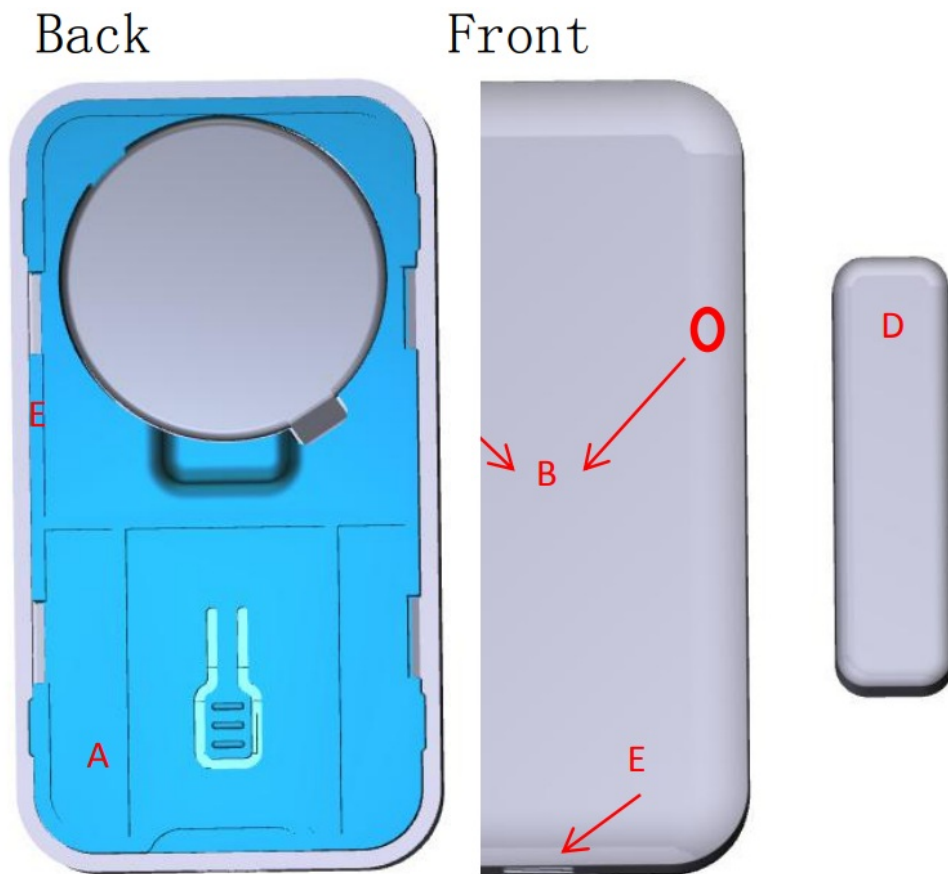
This product can be operated in any Z-Wave network with other Z-Wave Plus certified devices from other manufacturers. This product is a Multipurpose Sensor, it has a door/window sensor and Temperature Humidity sensor. This product is battery power, It sleeps most of the time. MSE3OZ is a security-enabled Z-Wave Plus device. Security Enabled Z-Wave Plus Controller must be used in order to fully utilize the product. The GENERIC_TYPE of the MSE3OZ is GENERIC_TYPE_SENSOR_NOTIFICATION The SPECIFIC TYPE of the MSE3OZ is SPECIFIC_TYPE_NOTIFICATION_SENSOR

Key Features:

- Checks and sends the status of the gate
- Detects and sends ambient temperature
- Detects and sends ambient humidity
- Support Association Group and Auto Report switch status
- Support firmware upgrades via Over-the-air (need Gateways support)

Product Overview:

- A. z-wave program button
- B. Magnet detection point
- C. Temperature and humidity detection point
- D. The magnet
- E. Power: CR2450 3V



Key function description Function

1: quickly press 3x button: inclusion (only if the sensor is not included in network) quickly press 3x button: exclusion

Function 2: quickly press the 5x button: Wake up the device

Function 3: Press click Z-Wave button 3 times quickly, and hold the third time for at least 10 seconds. to restore the device to the factory.

(Node: Please use this procedure only when the network primary controller is missing or otherwise inoperable.)

Adding Your Device To A Hub

The device support two methods of inclusion, When using a Z-Wave Flu' certified controller choose Network Wide Inclusion or SmartStart, Network Wide Inclusion To A Z-Wave' Network 1, Refer to your primary controller instructions to process the inclusion/exclusion setup procedure. 2, When prompted by your primary controller, click the z-wave button three times in one second. The device is compatible with SmartStart SmartStart enabled products can be added into a Z-Wave' network by scanning the Z-Wave

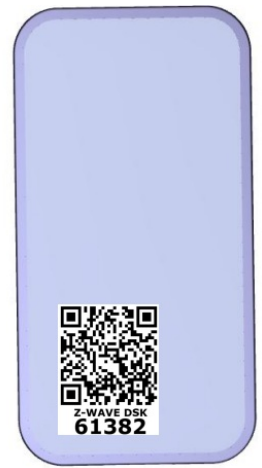
QR Code found on the top of the outlet or the back of the box with a controller providing SmartStart inclusion. No further action is required and the SmartStart product will be added automatically within 10 minutes of being switched on and in the network vicinity.

QR CODE

the QR code is stuck to the side of the case, DSK is included in the QR code.

DSK

The DSK code can be found on the DSK label which is attached to the packaging box.



Command Class

| Command Clas | Version | Required Security Class |
|-------------------------------|-------------------------|-------------------------|
| Z-Wave Plus Info | V2 | none |
| Configuration | V4 | highest granted |
| Association | V3 | highest granted |
| Multi-Channel Association | V4 | highest granted |
| Association Group Information | V3 | highest granted |
| Transport Service | V2 | none |
| Version | V3 | highest granted |
| Manufacturer Specific | V2 | highest granted |
| Device Reset Locally | V1 | highest granted |
| Powerlevel | V1_ | highest granted |
| Security 2 | V1 | none |
| Supervision | V1 | none |
| Firmware Update Meta Data | V5 | highest granted |
| Battery | V1 | highest granted |
| Indicator | V3 | highest granted |
| Sensor Binary | V2 | highest granted |
| Notification | V8 | highest granted |
| Sensor Multilevel | V11.....highest granted | |
| Wake Up | V2highest granted | |

Z-Wave™ Configuration Parameters

You may use the below configuration parameters to change the settings of the corresponding functionality. The device needs to be woken up during setup

| Number | Name | Information | Format / Size | Read Only | Altering | Advanced | MIN | MAX | Default | Value Description | Change |
|--------|------------------------------------|-----------------------------------------------------------------------|--------------------------|-----------|----------|----------|-----|------|---------|---------------------------------------------------------------------------------------------------------|----------------------------|
| 1 | Battery report threshold | When battery level exceeds threshold, the unit need to report to hub. | 1 byte unsigned integer | NO | NO | NO | 1 | 20 | 10 | 1 - 1% 2 - 2% ... 20 - 20% | Only can be changed by HUB |
| 2 | Low battery alarm report threshold | Setting the threshold for low battery alarm report. | 1 byte unsigned integer | NO | NO | NO | 5 | 20 | 5 | 5 - 5% 6 - 6% ... 20 - 20% | Only can be changed by HUB |
| 3 | state of the door sensor | Parameter defines state of the sensor when the magnet closes the reed | 1 byte unsigned integer | NO | NO | NO | 0 | 1 | 0 | 0 - door/window closed when magnet closes the reed 1- door/window opened when magnet closes the reed | Only can be changed by HUB |
| 4 | Door close send command time | Delay in seconds when door closed | 2 bytes unsigned integer | NO | NO | NO | 0 | 3600 | 0 | 0 - instantly 1- 1 second ... 3600 - 3600 seconds | Only can be changed by HUB |
| 5 | Door open send command time | Delay in seconds when door opened | 2 bytes unsigned integer | NO | NO | NO | 0 | 3600 | 0 | 0 - instantly 1- 1 second ... 3600 - 3600 seconds | Only can be changed by HUB |

| | | | | | | | | | | | |
|----|------------------------------|---------------------------------------|-------------------------|----|----|----|---|-----|----|---------------------------------------------------------------------------------------------------------------------------------------------------------------------------------------------------------------------------------------------------------------------------------------------------------------------------------------------------------------------------------------------------------------------------|----------------------------|
| 6 | Temperature report threshold | Minimum Temperature change to report | 1 byte unsigned integer | NO | NO | NO | 1 | 9 | 3 | 1 - 1°C 2 - 1.5°C 3 - 2°C 4 - 2.5°C 5 - 3°C 6 - 3.5°C 7 - 4°C 8 - 4.5°C 9 - 5°C | Only can be changed by HUB |
| 7 | Humidity report threshold | Minimum humidity change to report | 1 byte unsigned integer | NO | NO | NO | 5 | 20 | 10 | 5 - 5% 6 - 6% ... 20 - 20% | Only can be changed by HUB |
| 8 | Temperature Upper | Temperature Upper Watermark value | 1 byte unsigned integer | NO | NO | NO | 0 | 50 | 0 | 0 - Disable 1 - °C ... 50 - 50°C | Only can be changed by HUB |
| 9 | Temperature Lower | Temperature Lower Watermark value | 1 byte unsigned integer | NO | NO | NO | 0 | 50 | 0 | 0 - Disable 1 - 1°C 50 - 50°C | Only can be changed by HUB |
| 10 | Humidity Upper | Humidity Upper Watermark value | 1 byte unsigned integer | NO | NO | NO | 0 | 100 | 0 | 0 - Disable 1 - 1% ... 100 - 100% | Only can be changed by HUB |
| 11 | Humidity Lower | Humidity Lower Watermark value | 1 byte unsigned integer | NO | NO | NO | 0 | 100 | 0 | 0 - Disable 1 - 1% ... 100 - 100% | Only can be changed by HUB |
| 12 | Temperature unit | Switch the unit of Temperature report | 1 byte unsigned integer | NO | NO | NO | 0 | 1 | 1 | 0 - Celsius 1 - Fahrenheit | Only can be changed by HUB |
| 13 | Group 2 Function | Association Group 2 Setting | 1 byte unsigned integer | NO | NO | NO | 0 | 6 | 1 | 0 - Disable 1 - Send Basic SET 0xFF when Magnet is away, and send Basic SET 0x00 when Magnet is near. 2 - Send Basic SET 0x00 when Magnet is away, and send Basic SET 0xFF when Magnet is near. 3 - Only send Basic SET 0xFF when Magnet is away. 4 - Only send Basic SET 0x00 when Magnet is near. 5 - Only send Basic SET 0x00 when Magnet is away. 6 - Only send Basic SET 0xFF when Magnet is near. | Only can be changed by HUB |

Support for Notification

| Type | Events | Description |
|----------------------|--------------------------------|-----------------------------------|
| Access Control(0x06) | 0x16(Window/Door is open) | Open status. |
| Access Control(0x06) | 0x17(VVindow/Door is closed) | Close status. |
| Heat Alarm(0x04) | 0x02(Overheat) 0x06(Underheat) | Air temperature is high. Air temp |
| Weather Alarm(0x 10) | 0x02(Weather Alarm) | Air humidity is high or low. |

Basic Set Mapping

- Basic CC does not map to any Command Class.

Indicator Command Class

- The indicator (blue color) will flash according to the indicator set command received from HUB.

Support for Association Groups

Association Group

