



MINOSTON MS11W Switch On Off Smart Toggle Switch Instruction Manual

[Home](#) » [Minoston](#) » MINOSTON MS11W Switch On Off Smart Toggle Switch Instruction Manual 

Contents

- [1 MINOSTON MS11W Switch On Off Smart Toggle Switch](#)
- [2 Product Information](#)
- [3 Product Usage Instructions](#)
- [4 Specifications](#)
- [5 FCC](#)
- [6 Part 1. Installation](#)
- [7 Part 2. Manual Control](#)
- [8 Part 3. APP Connection](#)
- [9 Part 4. Troubleshooting](#)
- [10 Documents / Resources](#)
 - [10.1 References](#)
- [11 Related Posts](#)

Minoston®

MINOSTON MS11W Switch On Off Smart Toggle Switch



Product Information

- **Product Name:** Wi-Fi ON/OFF Switch
- **Power:** 120V AC, 60Hz
- **Wireless Frequency:** 2.4GHz
- **Wireless Standard:** IEEE802.11b/g/n
- **Maximum Load:** 10A
- For indoor use
- FCC and Industry Canada license-exempt RSS compliant

Product Usage Instructions

Before installing or using the Wi-Fi ON/OFF Switch, please read and follow these instructions:

Installation

1. Ensure that the power to the circuit for the switch and lighting fixture is turned off at the service panel (circuit breaker) before installation to prevent personal injury and/or damage to the switch.
2. Follow the installation guidelines provided by the National Electric Code and local regulations in the United States or the Canadian Electrical Code and local regulations in Canada.
3. If you are unsure or uncomfortable performing the installation, it is recommended to consult a qualified electrician.

Usage

To use the Wi-Fi ON/OFF Switch:

1. Ensure that the switch is connected to a power source with a voltage of 120V AC and frequency of 60Hz.

2. Make sure the wireless frequency of the switch is set to 2.4GHz.
3. Connect the switch to your home Wi-Fi network using the provided instructions or user interface.
4. Download and install the compatible mobile application on your smartphone or tablet.
5. Open the mobile application and follow the instructions to set up and configure the switch.
6. Once the setup is complete, you can use the mobile application to turn the switch ON or OFF remotely.
7. Ensure that the connected load does not exceed 10A to prevent damage to the switch.

Note: Any modifications to the antenna or device are not permitted to comply with FCC RF exposure compliance requirements. Additionally, please refer to the warranty terms provided by the manufacturer for information regarding warranty coverage and limitations.

Specifications



- **Power:** 120V AC, 60Hz
- **Wireless Frequency:** 2.4GHz Wireless
- **Standard:** IEEE802.11b/g/n
- **Maximum Load:** 10A Incandescent 625W LED 150W Resistive 1250W
- **Temperature Range:** 32° F~104° F
- **Range:** Up to 100 feet line of sight

For indoor use.



- Switch x1
- wiring x1
- screw x2
- Faceplate x1

FCC

This device complies with part 15 of the FCC and Industry Canada license-exempt RSS standard(s). Operation is subjected to the following two conditions:

1. This device may not cause harmful interference, and
2. This device must accept any interference received, including interference that may cause undesired operation.

FCC NOTE: The manufacturer is not responsible for any radio or TV interference caused by unauthorized modifications to this equipment. Such modifications could void the user's authority to operate the equipment.

- Reorient or relocate the receiving antenna.
- Increase the separation between the equipment and receiver.
- Connect the equipment into an outlet on a circuit different from that to which the receiver is connected.
- Consult the dealer or an experienced radio/TV technician for help.

NOTE: This equipment has been tested and found to comply with the limits for a Class B digital device, pursuant to Part 15 of the FCC Rules. These limits are designed to provide reasonable protection against harmful interference in a residential installation. This equipment generates, uses and can radiate radio frequency energy and, if not installed and used in accordance with the instructions may cause harmful interference to radio communications. However, there is no guarantee that interference will not occur in a particular installation. If this equipment does cause harmful interference to radio or television reception, which can be determined by turning the equipment off and on, the user is encouraged to try to correct the interference by one or more of the following measures:

Important note: To comply with the FCC RF exposure compliance requirements, no change to the antenna or the device is permitted. Any change to the antenna or the device could result in the device exceeding the RF exposure requirements and void user's authority to operate the device.

CAUTION – PLEASE READ!

This device is intended for installation in accordance with the National Electric Code and local regulations in the United States, or the Canadian Electrical Code and local regulations in Canada. If you are unsure or uncomfortable about performing this installation consult a qualified electrician.

WARNING – SHOCK HAZARD

TURN OFF THE POWER to the circuit for the switch and lighting fixture at the service panel (circuit breaker) prior to installation.

ALL WIRING CONNECTIONS MUST BE MADE WITH THE POWER OFF to avoid personal injury and/or damage to the switch.

OTHER WARNINGS

- Risk of Fire
- Risk of Electrical Shock
- Risk of Burns

WARRANTY

Our Products warrants this product to be free from manufacturing defects for a period of one year from the original date of consumer purchase. This warranty is limited to the repair or replacement of this product only and does not extend to consequential or incidental damage to other products that may be used with this product. This warranty is in lieu of all other warranties, expressed or implied. Some states do not allow limitations on how long an implied warranty lasts or permit the exclusion or limitation of incidental or consequential damage, so the above limitations

may not apply to you. This warranty gives you specific rights, and you may also have other rights which vary from state to state.

Part 1. Installation

CHANGING THE COLOR OF THE PADDLE(OPTIONAL)

This step is optional. Before you start you may want to change the color of the paddle to match your wallplate or decor.



1. Push side tabs in on one side and then the other to release
2. Simply put the new paddle onto the switch by side tabs and snap securely into place. Once this step has been completed please proceed to part 2 wiring.

Wiring Instructions – A Few Quick Reminders



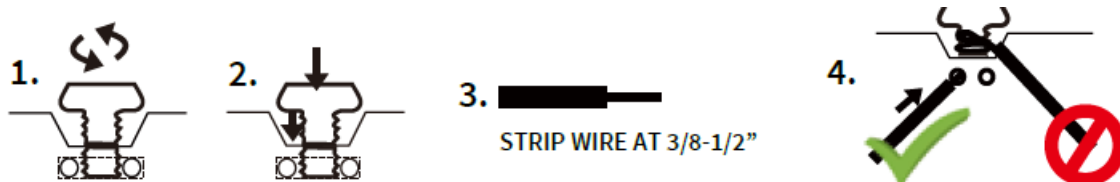
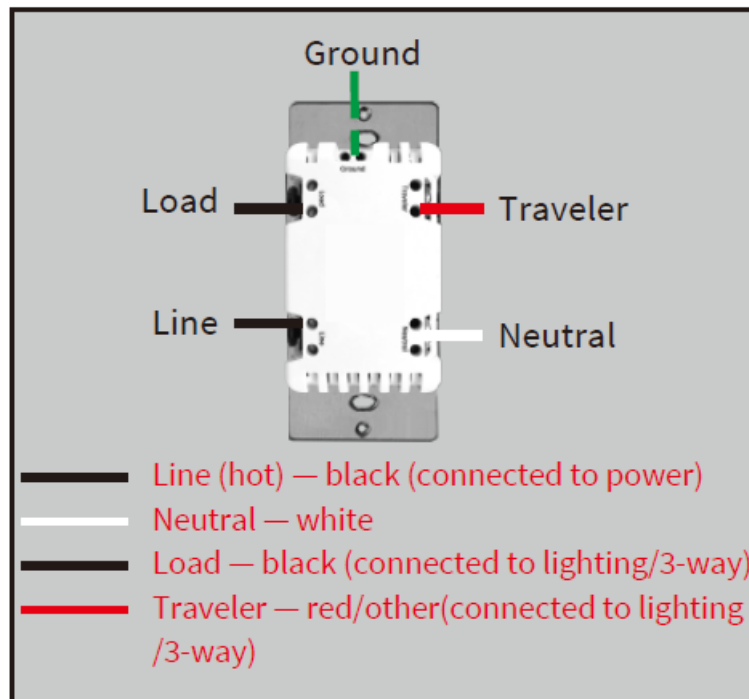
Scan to view installation guide

Note before installation

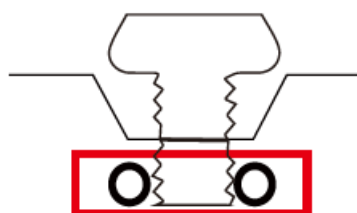
- The Wi-Fi In-wall Smart Switch must not exceed Incandescent 625W / LED 150W / Resistive 1250W.
- Work with regular 3-way on/off for 2 locations control. It can only be connected with regular 3-way on/off switch, don't use a smart switch or a dimmer switch! Couldn't work with an add-on switch!

- The colors of your wires may not match the ones in our diagrams so please make sure you've identified all wires correctly based on their source, not color only.
- Please check your original 3-way wiring circuit in your home before installation, and then follow the wiring diagram option 1 or 2 in the manual.
- This switch requires a Neutral for installation, or the installation will not succeed.
- Not recommended for fan.

HOW TO INSTALL THE WIRES

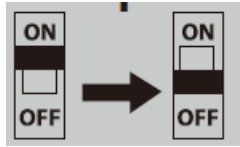


1. **Unscrew**: carefully turn the screw counterclockwise to leave enough space for the wire to be inserted. Do not unscrew the screws completely.
2. **Press down**: Once loosened, use your finger so it catches the thread.
3. **Insert the wire**: make sure the wire is completely straight, then insert it into the terminal while holding down the screw. Do not wrap the wire around the screw!
4. **Tighten**: Turn the screw clockwise to tighten the wire. Make sure the wires are locked!



Note: There are 2 holes for each terminal can be used in the connection. You can use a jump wire or the second hole at the terminal to connect.

1. **Tool:** Please prepare a flat head screwdriver.
2. Turn power OFF at circuit breaker or fuse box.

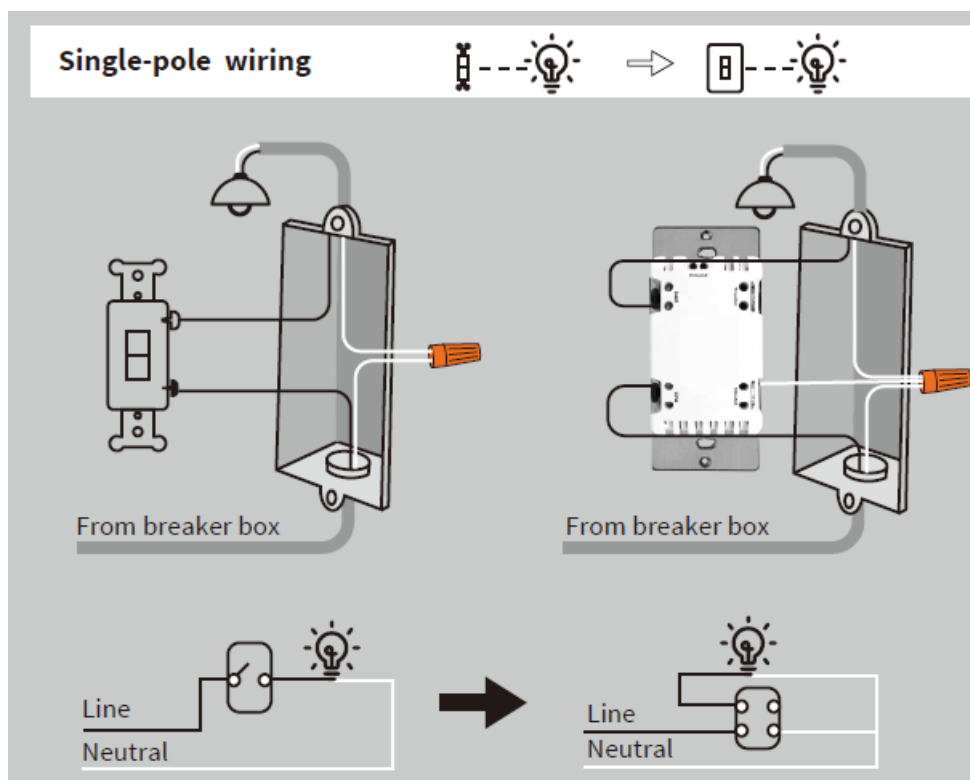


3. Remove wall plate.

4. Remove the switch mounting screws. 5. switch.(Please use our sticker) (Just for 3-way switch)



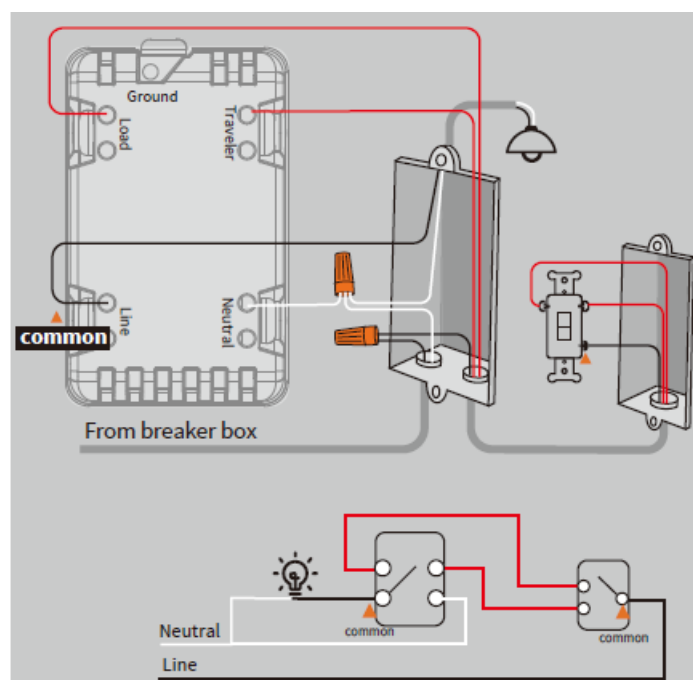
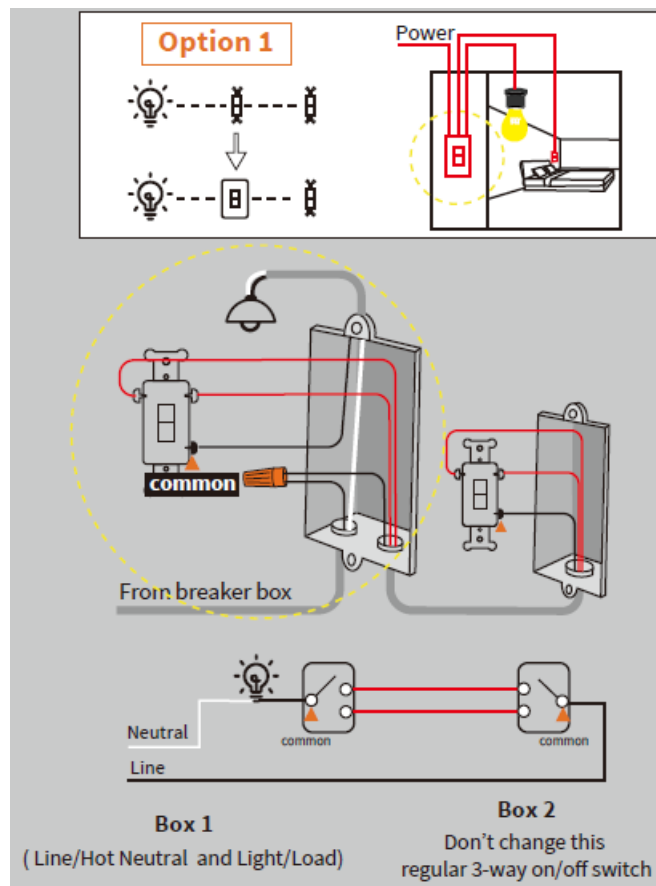
5. Carefully remove the switch from the switch box. (DO NOT disconnect the wires.)
6. There are up to five screw terminals on the smart switch, these are marked (Please check <HOW TO INSTALL THE WIRES>) (Please use our screws.)
7. The Ground was excluded from the diagram to simplify the illustration. Please Make sure the ground wires connected to the switches respectively.

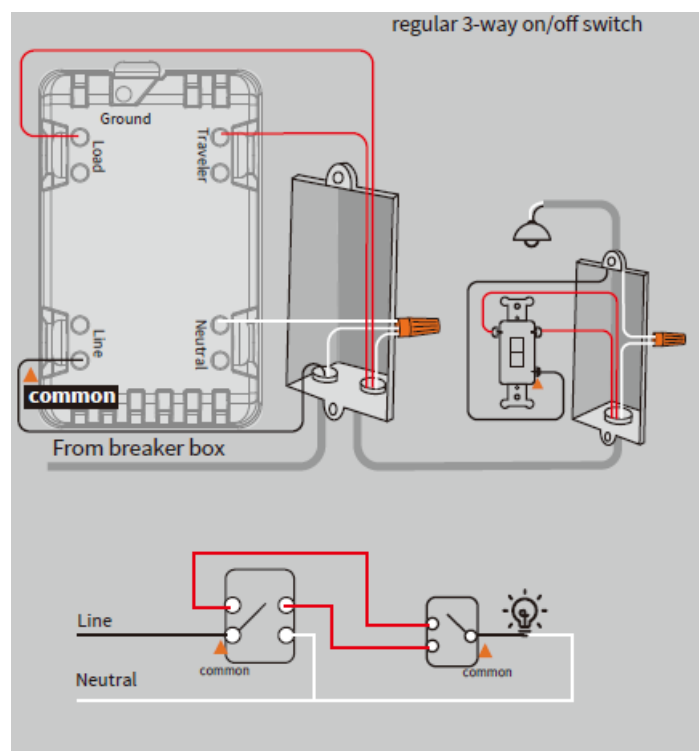
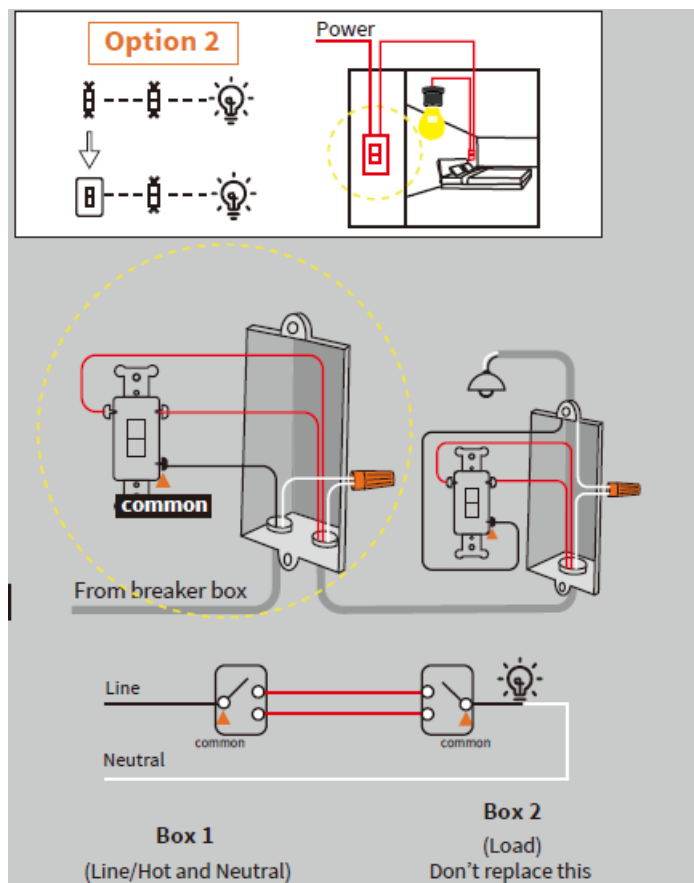


NOTE:

1. Neutral required. If the switch box do not have a Neutral, please stop! Connect the white wire to neutral terminal (use a white jump wire form the package or the second hole at the terminal to connect.)
2. Before the old switch detached, please identify the common terminal.
3. If the Line wire connected to the Common terminal, please refer to the wiring diagram Option 2. If the Load wire connected to the Common terminal, please refer to the wiring diagram Option1.
4. Only work with regular 3-way on/off for 2 locations control. It can only be connected with regular 3-way on/off switch, don't use a smart switch or a dimmer switch! Couldn't work with an add-on switch!

Please check which option is best for your 3-way installation.





Part 2. Manual Control



LED Indicator:

- Red: Network failure
- Blue: Network configuration mode
- Orange: Light status indicator
- Purple: AP Network configuration mode

OPERATION GUIDE

- Adding your device to Wi-Fi network:
Hold the “down” button more than 10s until the bulb flashes and blue LED indicator blinks rapidly to initiate App-configured Mode.

Operation	LED	Switch
Press “down ”	ON (Default)	Power OFF
Press “up”	OFF (Default)	Power ON
Hold the “down” button more than 10s	blue LED flashes	Connect to the network
Press the “down” button 10 times quickly	flash 3 times	Change LED status
Press the “up” button 10 times quickly	flash 3 times	Restores status power failure
Press “down ” button 8 times quickly	flash 3 times	Button Function Setting

Part 3. APP Connection



QR code



Smart Life

- Please scan the QR code to download the application “Smart Life”.
- If you cannot download the Smart Life app, please search “Smart Life” on Google Play (for Android phone) or Apple Store (for iOS phone) to download. , please follow the instructions below to set up your smart switch.
- The smart switch can be also used with Amazon Echo and Google Home. Please scan the QR code below and

follow the instructions if you have any trouble pairing with them.



Amazon-Echo

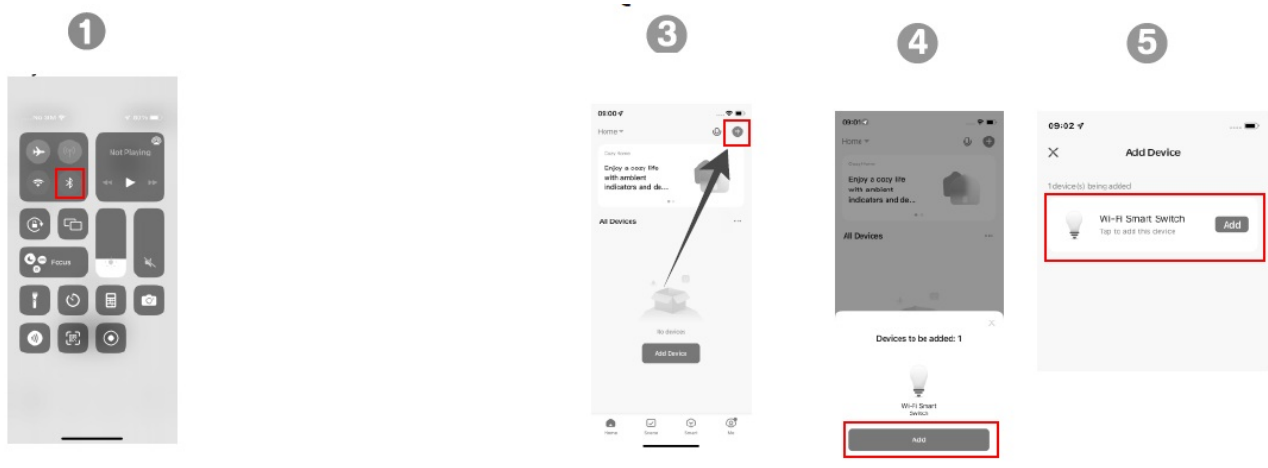


Google-Home

Note:

- Our products only support 2.4GHz Wi-Fi network.
- 3 connection network modes: Bluetooth quick-fit Mode, Easy Mode, AP Mode. Choose the most suitable mode to configure the network.
- Please operate quickly when blue LED indicator blinks rapidly.
- When indicator flash enters the network, complete standard operation within 30s
- Purple LED Flashing slowly enters AP Mode (select “AP Mode” follow the below instructions.)
- Make sure the switch works properly by manual control before network configuration.
- Device Reset / Network reset
hold the “Down” button until the light bulb flashes (LED blinks rapidly)

Bluetooth Quick-Fit Mode



1. Turn on your Phone Bluetooth.
2. The auto-connection comes with blue LED indicator blinks for 3 minutes to wait for configuration. If it stopped, please Hold the “down” toggle more than 5s until the bulb flashes and the blue LED blinks again.
3. Tap ‘+’ to add this switch in the “Smart Life” APP.
4. You’ll see “Devices to be added”.... “Go to add”.
5. Click to “Add”

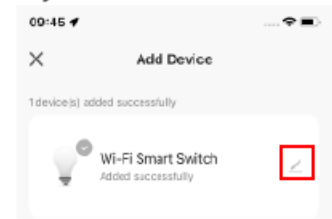
6



7



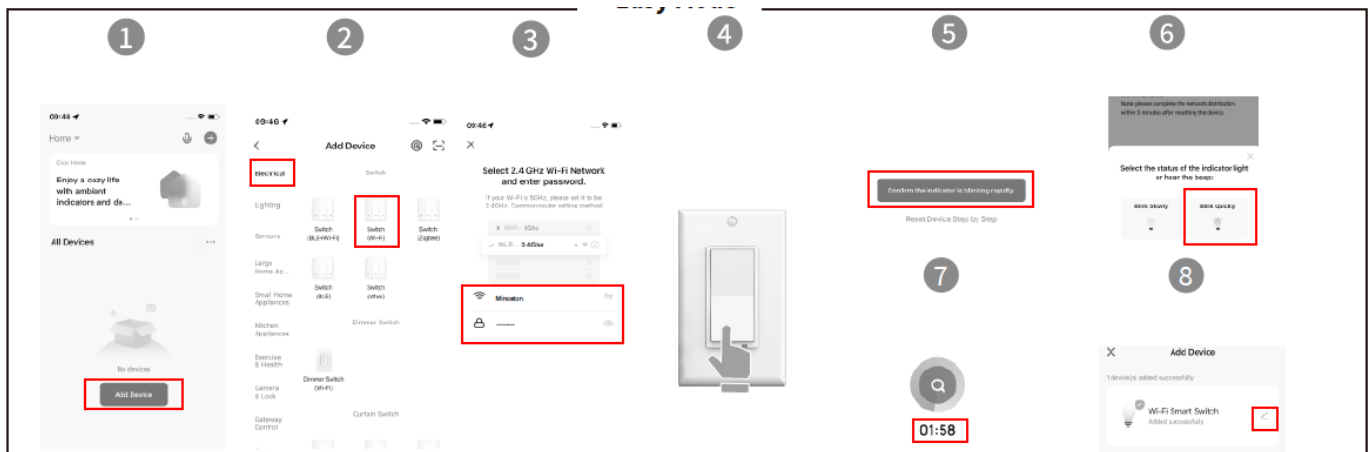
8



6. Enter the Wi-Fi Password (Your phone should have connected to the same Wi-Fi first).
7. Wait for it's 100% (LED stays in • green 3 seconds.)
8. Edit the name of your new smart switch!

Note: When the Bluetooth is off, APP will remind: "You are advised to enable Bluetooth".

Easy Mode



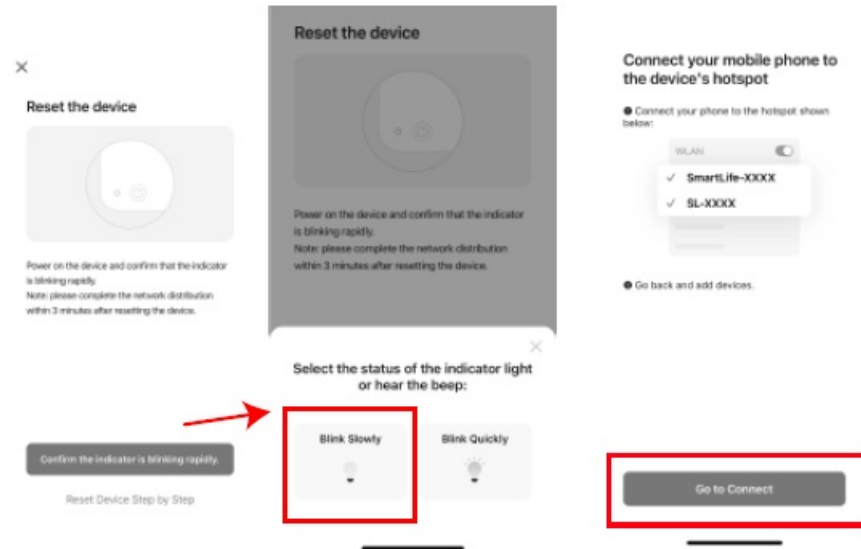
1. Tap "Add Device" to add a device in your app
2. Select "Electrical"- "Switch (Wi-Fi)"
3. Enter the Wi-Fi Password
4. Hold the "down" toggle more than 5s until the bulb flashes and "BLUE" LED blinks rapidly. Please make sure the switch is on the "OFF" position.
5. Tap "Confirm the indicator is blinking rapidly."
6. Click "Blink Quickly"
7. Wait for it's 100% (LED stays in • green 3 seconds.)
8. Click and edit the name of switch!

AP Mode

If you cannot successfully configure the default mode, try connecting to AP mode.

1. Select "Electrician "- "Switch (Wi-Fi)" and enter the Wi-Fi password.
2. When the blue LED indicator flashes quickly, press and hold the off button (default is the down button for more than 5s until the bulb flashes twice to enter the AP mode, and the purple LED indicator flashes quickly.
3. Click "Confirm the indicator is blinking rapidly." Then select "Blink Slowly".
4. Open wireless WLAN settings with "SmartLife-xxxx".

5. Back in the application, continue adding devices and wait for the connection to complete.



AP Network configuration mode to Easy Mode: When the purple LED indicator flashes quickly, press and hold the “down” toggle for more than 5s until the bulb flashes 1 time to enter easy mode, and the blue LED indicator flashes quickly.

The indicator will flashes 3 times after each parameter set successfully		
Parameter	Available settings	Operation
Parameter 1: LED Indicator Status Setting (This parameter can access you to choose the led indicator to be on when the switch (light) is on/off, or LED indicator remains on/off all times.)	Value=1 (default) LED is On when the switch (light) Off and LED is Off when the switch (light) On. Value=2 LED is On when switch (light) On and LED is Off when the switch (light) Off. Value=3 LED is always Off. Value=4 LED is always On.	Quick press “Down” button 10 times. Please note: the switching of each value is in order, a quick press “down” button 10 times will switch once. eg: Switching from value1 to value 4 needs 3 switchings.
Parameter 2: Restores State after Power Failure (This parameter can access you to set the switch to be on/off after power failure.)	Value=1 (default) Memory state before power failure This switch will be return to state prior to the power failure after power is restored. Value=2 The switch is off regardless of the state prior to power failure Value=3 The switch is off regardless of the state prior to power failure.	Quickly press “Up” button 10 times. Please note: the switching of each value is in order, a quick press “up” button 10 times will switch once. eg: Switching from value1 to value 3 needs 2 switchings.
Parameter 3: Button Function Setting (This parameter can access you to set the “up” button to turn the light on/off.)	Value=1 (default) The “up” button turn the light on and “down” button turn lights off. Value=2 The “up” button turn the light off and “down” button turn lights on.	Quick press “Down” button 8 times Please note: the switching of each value is in order, a quick press “down” button 8 times will switch once. eg: Switching from value1 to value 2 needs 1 switching.

Part 4. Troubleshooting

Possible Problem	Possible Cause	Solution
<ul style="list-style-type: none"> Unable to connect with the phone 	Network issue.	Please check if the red LED blinks. If yes, retry to add this switch to your network.
<ul style="list-style-type: none"> The light bulb blinks when the switch turn it off 	There is a leakage of electricity or the bulb does not close with the switch	Rewire the switch or replace the bulb.
<ul style="list-style-type: none"> Cannot turn the switch on/off manually 	<ol style="list-style-type: none"> Incorrect wiring No electricity The bulb is broken or incompatible 	<ul style="list-style-type: none"> Make sure the switch wiring is correct Inspecting circuit breakers; Make sure the power supply is restored change a light bulb
<ul style="list-style-type: none"> The switch is not work with APP control 	<ol style="list-style-type: none"> Network delay or disconnect The phone refuses your permission The switch out of the order 	<ul style="list-style-type: none"> Check your network connectivity, The switch needs to be reconnected Grant permission on your phone settings Manually switch on to check the switch
<ul style="list-style-type: none"> The switch cannot connected to the application 	<ol style="list-style-type: none"> Enter wrong Wi-Fi password Weak Wi-Fi signal Unable to connect to Wi-Fi 	<ul style="list-style-type: none"> Enter the correct Wi-Fi password Check Wi-Fi signal Confirm Your Wi-Fi is 2.4GHz

Please contact us if you have any questions during installation.

ask@minoston.com

www.minoston.com

Documents / Resources

	<p>MINOSTON MS11W Switch On Off Smart Toggle Switch [pdf] Instruction Manual MS11WWF30S, MS11W, MS11W Switch On Off Smart Toggle Switch, Switch On Off Smart Toggle Switch, Off Smart Toggle Switch, Smart Toggle Switch, Toggle Switch, Switch</p>
--	---

References

- [M Minoston |](#)