

Minosoo YYC088 Inflatable Pool



Minosoo YYC088 Inflatable Pool User Manual

[Home](#) » [Minosoo](#) » Minosoo YYC088 Inflatable Pool User Manual 

Contents

- 1 [Minosoo YYC088 Inflatable Pool](#)
- 2 [Product Information](#)
- 3 [Product Usage Instructions](#)
- 4 [FAQs](#)
- 5 [Package Contents](#)
- 6 [Safe Use of the Pool](#)
- 7 [Get Started](#)
- 8 [Inflating the Pool](#)
- 9 [Filling the Pool](#)
- 10 [Storage and Maintenance](#)
- 11 [Documents / Resources](#)
 - 11.1 [References](#)

Minosoo

Minosoo YYC088 Inflatable Pool



Product Information

Specifications:

- Model: YYC088
- Customer Service: support@moyoili.net
- Electric air pump recommended (not included)

Product Usage Instructions

Inflation:

1. Start inflating the pool from the bottom air chamber and work your way up to the top air chamber. Avoid overinflating to prevent damage.
2. Use an electric air pump for efficient inflation.

Filling:

1. Fill the pool slowly to prevent water overflow.
2. Do not exceed the middle air chamber while filling the pool.

Safety Precautions:

1. Never dive or jump into the pool to avoid injury.

FAQs

Q: Can I use a manual pump instead of an electric air pump?

A: While an electric air pump is recommended for efficient inflation, you can use a manual pump if needed. Ensure not to overinflate the pool.

Q: What should I do if water overflows while filling the pool?

A: If water starts to overflow, immediately stop filling and reduce the water level. Do not exceed the middle air chamber to prevent overflow.

YYC088

Never dive in or jump into the pool to avoid injury.

Customer Service: support@moyoili.net

Package Contents

- 1xpool
- 2 x Repair Patch
- 1 x User Manual

IMPORTANT

READ AND FOLLOW ALL SAFETY INFORMATION AND INSTRUCTIONS. KEEP FOR FUTURE REFERENCE. FAILURE TO FOLLOW THESE WARNINGS AND INSTRUCTIONS CAN RESULT IN SERIOUS INJURY OR DEATH TO USERS. ESPECIALLY CHILDREN.

- This manual addresses some common risks but not all danger of water recreation. Always be cautious, use common sense and wise judgment when enjoying water activity.
- Please read this manual thoroughly before use of the product and retain it for future reference.

WARNING




**WARNING**
PREVENT DROWNING




Children---especially
Toddlers--- are at high risk
of drowning.

Closely watch children who
are in or near this pool.

Empty pool or prevent
access when not in use.

**WARNING**
No Diving



You can break your neck
and be paralyzed!

Never leave your child unattended- drowning hazard.

- Children under 5 are at the highest risk of drowning.
- Closely watch children who are in or near this pool.
- Empty pool or prevent access when not in use.
- This product is intended for the use of people aged 3 and above.
- Only for domestic use. Only for outdoor use.
- Children can be drowned in very small amounts of water. Empty the pool when not in use.
- Keep children under direct sight. Actively supervise them when they are in or near the pool or when you are filling or emptying the pool. When searching for a missing child, check the pool first, even if he/she is thought to be in the house.
- Drain water inside the pool after use or before storage to prevent the pool from collecting water from rain or other sources.
- Set up a fence or other approved barriers around the pool as per the local law and regulations to avoid unsupervised children accessing the pool,
- Never dive in or jump into the pool to avoid injury.

Safe Use of the Pool

- Encourage children to learn to swim.
- Learn Lifesaving knowledge (e.g. Cardiopulmonary Resuscitation – CPR) and update it regularly, which will make a tremendous difference during an emergency. Instruct all users including children on how to handle emergencies.
- Do not use the product after drinking or during medication,
- Please remove any cover completely before use if you have covered the pool.
- Change water in the pool regularly to prevent water-related illnesses.
- Do not add any undiluted chemicals into the pool to avoid injury to humans.
- If any chemicals are occasionally used to reduce the frequency of water replacement, follow instructions from the manufacturer closely and dilute the chemicals properly. Keep the chemicals out of reach of children.
- Make sure the installation and use of power appliances near the pool conform to local regulations.
- Always remove any means of access from the pool and store it out of reach of children.
- The use of accessories not recommended by the manufacturer may lead to injury or property loss,
- Keep power cable, radio, speaker or any other electric appliances away from the pool. Never place the pool near or under the electric lines.
- Always read and follow warnings and safety signs on the pool.

Prevent Young Children from Drowning

- Install fencing or approved barriers around all sides of the pool. State or local laws or codes may require fencing or other approved barriers.
- Check state or local laws and codes before setting up the pool, Drowning occurs silently and quickly. Assign an adult to supervise pool and wear the provided water watcher tag.
- Keep children in your direct sight when they are in or near the pool and when you are filling and emptying the pool.

- When searching for a missing child, check the pool first, even If you think your child is in the house.

Prevent Young Children from Gaining Access to the Pool

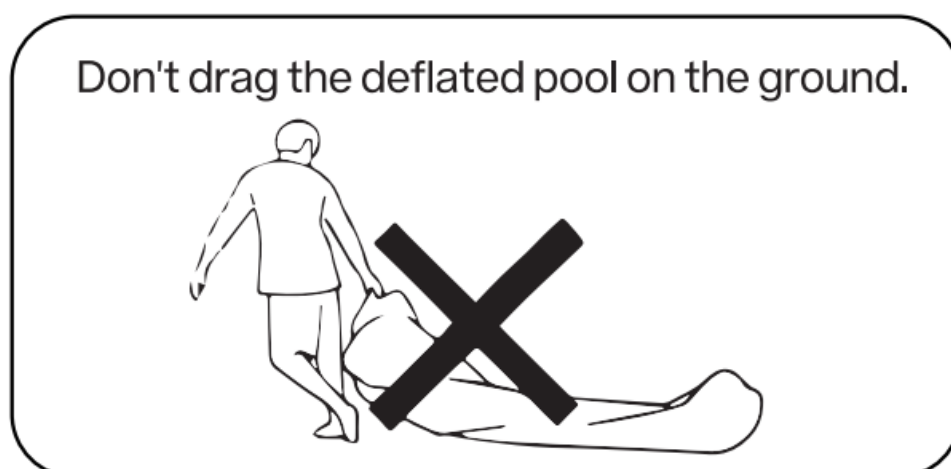
- Remove pool ladders before leaving the pool. Toddlers can climb the ladder and get into the pool.
- Position furniture away from the pool so that children cannot climb and gain access to the pool.
- When leaving the pool, remove floats and toys from the pool that might attract a child.

Be Prepared to Respond to an Emergency:

- Keep a working phone and list of emergency numbers near pool.
- Become certified in cardiopulmonary resuscitation(CPR)so you can respond to an emergency.
- Pool that presents a drowning hazard even during the filling and draining of the pool.
- Maintain constant supervision of children and do not remove any safety barriers until the splash pod is completely empty and stowed away.

CAUTION

- Assembly and disassembly of the pool and its accessories can only be conducted by an adult. No tools are needed during the installation.
- Use the pool on an even and stable surface only. Keep it at least 2 meters/ 6. 56 feet away from buildings or any other obstructions.
- Leave enough space around the pool for adults to walk through for supervision of children inside the pools.
- Empty the pool after use or before storage.
- Never lean over or squeeze the inflating or deflating valve to avoid injury or water overflow.
- Take off all sharp objects(e.g. jewellery, watch, key)before entering the pool.
- Keep water inside the pool clean to avoid possible illness.
- Please clean and maintain the product properly to avoid fast wear abrasion and aging.
- Check the pool regularly for any sharp edges to avoid injury to the human body.



Get Started

1. Find an even and stable surface, and remove any sharp objects. Place the pool in the selected spot.
2. Unfold the product gently and check its integrity. Do not use it if any breakage is found.

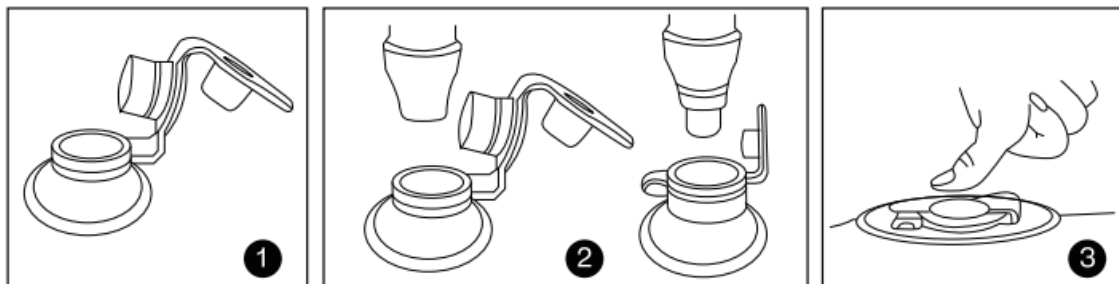
3. Fasten all the deflating or drainage valves securely.

Note:

- Do not install the pool over concrete, asphalt or any other hard surface.
- Change water in the pool frequently (particularly in hot weather) or when noticeably contaminated.
- Keep the assembly and installation instructions for further reference.

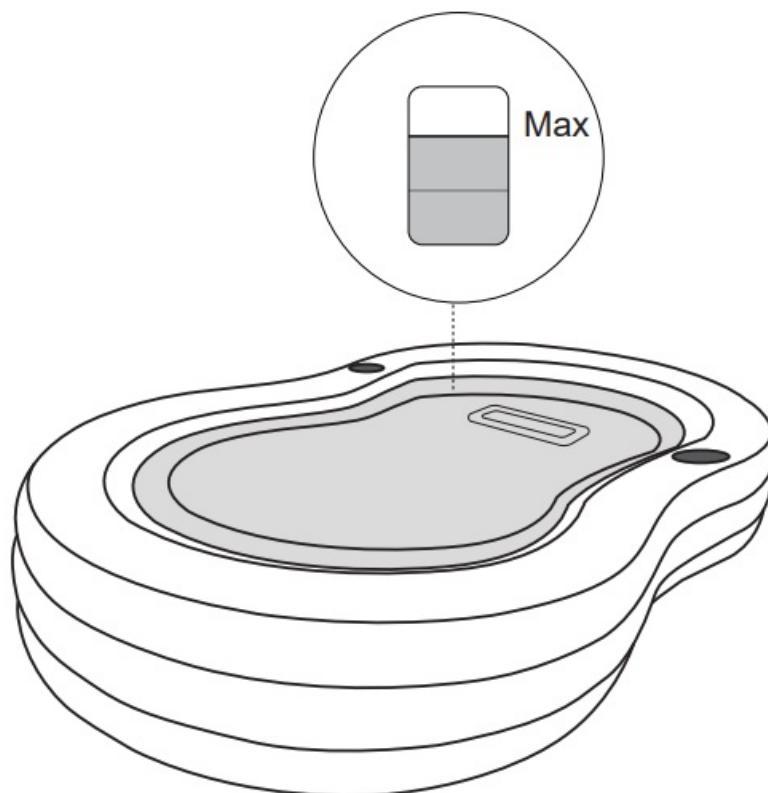
Inflating the Pool

(An electric air pump is recommended but not included) Inflate the pool from the bottom air chamber to the top air chamber, never overinflate it.



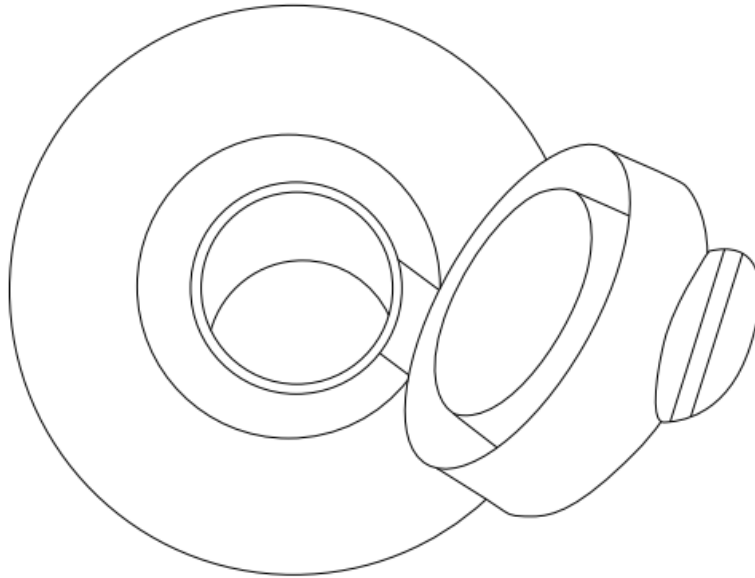
Filling the Pool

Fill the pool slowly, do not exceed the middle air chamber to avoid water overflow.



Storage and Maintenance


1. Remove all accessories, toys and pipes from the pool.
2. Open the drainage valve.



3. Open the inflating valve, and fold the pool for faster deflation and drainage.
4. Fasten all the valves and expose the pool and its accessories to direct sunlight until it is completely dry.
5. store in a clean, dry room.
6. Fix the small-sized leakage and breakage with the included fixing patches.

To keep children from entering the pool area unaccompanied by a supervising adult, we suggest construct and maintain barriers, and never leaving children around a portable pool unsupervised. Portable pools should be fenced, covered, or emptied and stored away when not in use. Recommendations, as described in CPSC Pub. No.362 found at www.poolsafely.gov.

Documents / Resources

	Minosoo YYC088 Inflatable Pool [pdf] User Manual YYC088 Inflatable Pool, YYC088, Inflatable Pool, Pool
---	---

References

- [User Manual](#)

[Manuals+](#), [Privacy Policy](#)

This website is an independent publication and is neither affiliated with nor endorsed by any of the trademark owners. The "Bluetooth®" word mark and logos are registered trademarks owned by Bluetooth SIG, Inc. The "Wi-Fi®" word mark and logos are registered trademarks owned by the Wi-Fi Alliance. Any use of these marks on this website does not imply any affiliation with or endorsement.