



MINN KOTA Micro Remote GPS Navigation System Installation Guide

[Home](#) » [MINN KOTA](#) » MINN KOTA Micro Remote GPS Navigation System Installation Guide 

MINN KOTA Micro Remote GPS Navigation
System Installation Guide



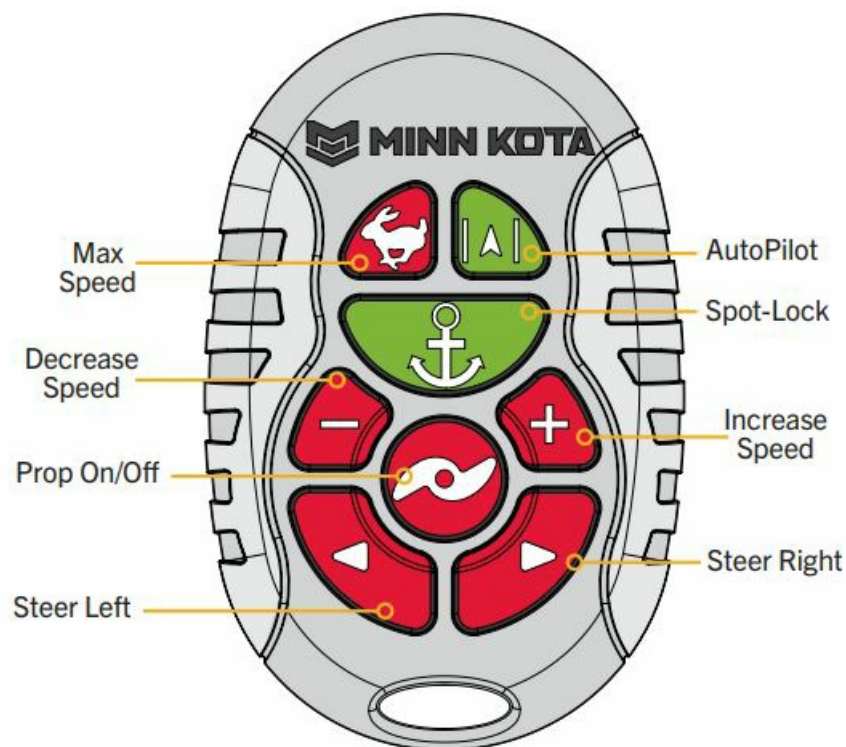
Compatible with all Bluetooth® enabled Minn Kota GPS Navigation Systems only.

**MICRO REMOTE
QUICK REFERENCE GUIDE**

Contents

- [1 REMOTE](#)
- [2 MANUAL CONTROL
BUTTONS](#)
- [3 NAVIGATION BUTTONS](#)
- [4 PAIRING](#)
- [5 Documents / Resources](#)
 - [5.1 References](#)

REMOTE



NOTICE: If your motor has Spot-Lock Jog enabled, the Speed Down (backwards), Speed Up (forward), Steer Right and Steer Left buttons function change to Jog the boat while in Spot-Lock.

MANUAL CONTROL BUTTONS

| | |
|--|---|
| | Speed Down & Speed Up Press to decrease or increase motor speed. |
| | Prop On/Off Pressing this button will turn the Prop on and off. |
| | Steer Left & Steer Right Press to steer the motor to the left or to the right. |
| | Max Speed Bypasses the current motor speed to speed 10. Double press to engage. Single press to disengage. |

NAVIGATION BUTTONS



Spot-Lock

Press to enable Spot-Lock. When Spot-Lock is enabled from the Micro Remote, use either the fully functioning standard remote or the fish finder if you want to save it.



AutoPilot

Press to enable AutoPilot. The selection between Heading Lock and Course Lock must be made from either the fully functioning standard remote or the fish finder.

PAIRING

Pairing the Micro Remote to your Controller

The controller is located in the Control Head on your Minn Kota trolling motor with Advanced GPS Navigation and may pair up to 5 remotes. These five remotes can be a combination of standard remotes and micro remotes. Any additional remotes can be paired using the following steps. Once the maximum number of remotes have been paired, the controller will start replacing the oldest paired remote in memory with the new remote.

1. Power up the trolling motor.
2. Locate the Pair PAIR button at the top of the Control Head.
3. Push and hold the Pair PAIR button down. A consistent tone will be emitted from the Control Head.
NOTICE: Make sure the remote stays within range of the Control Head during the pairing process.
4. While holding the Pair PAIR button on the Control Head, push and hold the Max Speed button and AutoPilot button on the remote simultaneously.
NOTICE: When the remote is being paired to the Controller, the Max Speed button and the AutoPilot button need to be held down simultaneously. Make sure to also hold the Pair PAIR button on the Control Head to successfully pair the remote to the controller.
5. Once successfully paired, 3 longer beeps will be emitted from the Control Head and the remote will be paired.
NOTICE: A remote can be paired to one controller at a time. A controller can have multiple remotes paired to it.

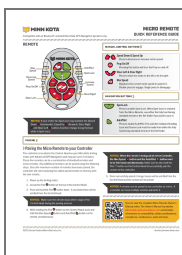


minnkota.johnsonoutdoors.com

Scan to view the complete Micro Remote Owner's Manual online. The Owner's Manual is available at minnkota.johnsonoutdoors.com and includes information on compatibility, safety considerations, compliance, maintenance, parts and more.

©2023 Johnson Outdoors Marine Electronics, Inc.
minnkota.johnsonoutdoors.com

Documents / Resources



[MINN KOTA Micro Remote GPS Navigation System](#) [pdf] Installation Guide
2394912, Micro Remote GPS Navigation System, Micro Remote GPS, GPS, GPS Navigation System, Navigation System

References

-  minnkota.johnsonoutdoors.com
-  minnkota.johnsonoutdoors.com/

Manuals+.