

**MINIX**

**C1 Plus  
USB-C to  
HDMI  
Wireless  
Display  
Dongle**



## MINIX C1 Plus USB-C to HDMI Wireless Display Dongle User Guide

[Home](#) » [MINIX](#) » MINIX C1 Plus USB-C to HDMI Wireless Display Dongle User Guide 

### Contents

- [1 MINIX C1 Plus USB-C to HDMI Wireless Display Dongle](#)
- [2 Product Information](#)
- [3 Product Usage Instructions](#)
- [4 Frequently Asked Questions](#)
- [5 CONNECTION](#)
- [6 FCC Warning](#)
- [7 Documents / Resources](#)
  - [7.1 References](#)
- [8 Related Posts](#)

**MINIX**

**MINIX C1 Plus USB-C to HDMI Wireless Display Dongle**



## Product Information

### Specifications

- **Compliance:** Part 15 of FCC Rules
- **Radiation Exposure Limits:** FCC approved
- **Operating Distance:** Minimum 0cm between radiator and body

### Product Usage Instructions

#### Safety Precautions

1. Do not make any changes or modifications to the device that are not explicitly approved by the manufacturer.
2. Ensure the device is operated in compliance with FCC rules to avoid harmful interference.
3. Maintain a minimum distance of 0cm between the radiator and your body during installation and operation.

#### Installation

1. Place the device in a suitable location ensuring proper ventilation.
2. Connect the device to a power source as per the manufacturer's instructions.

#### Operation

1. Power on the device using the designated switch or button.
2. Follow the user manual for specific instructions on operating the device.

### Frequently Asked Questions

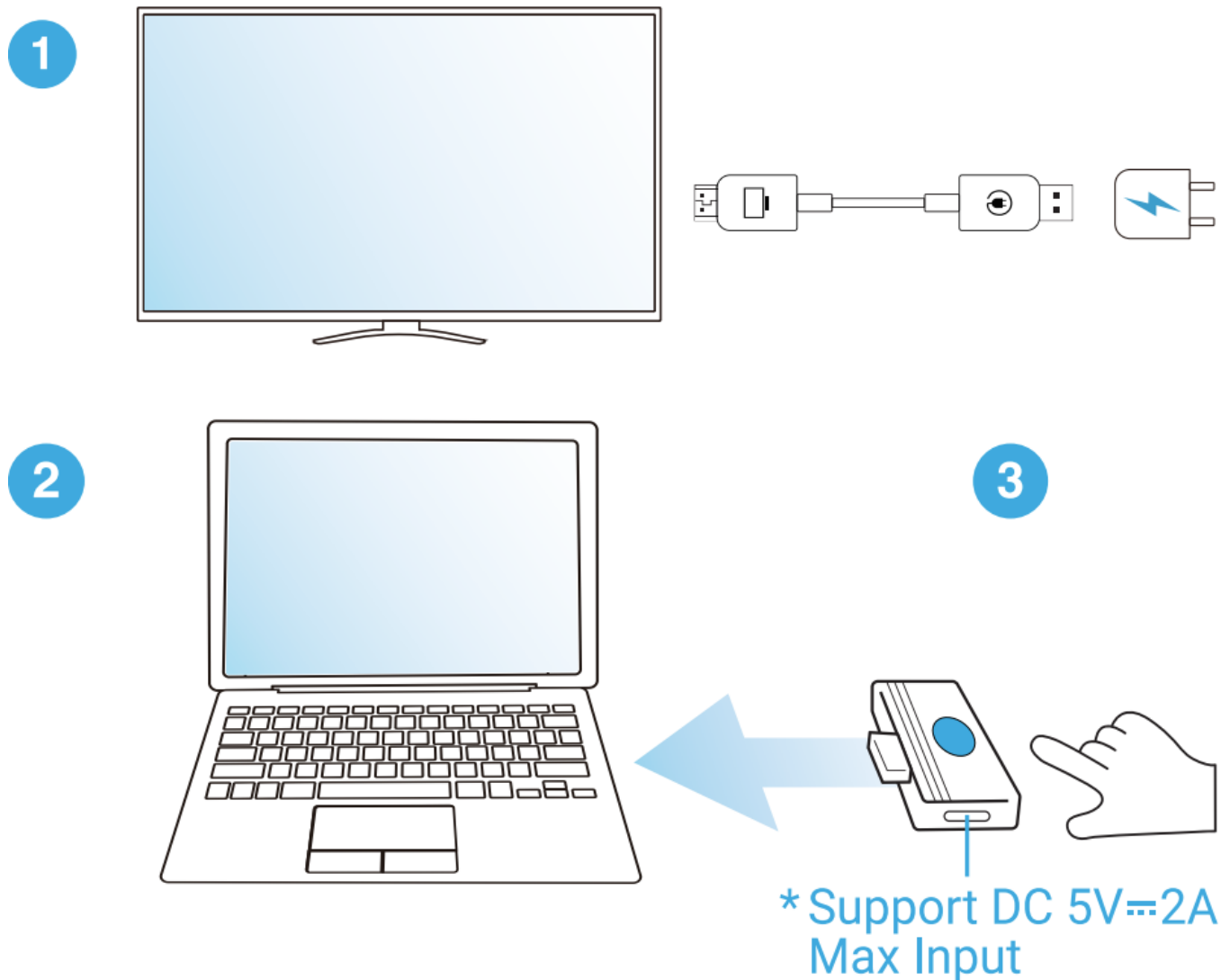
**Q: Can I modify the device without voiding the warranty?**

**A:** No, any changes or modifications not approved by the manufacturer could void your warranty and authority to operate the equipment.

**Q: Is it safe to operate the device close to my body?**

**A:** The device should be operated with a minimum distance of 0cm between the radiator and your body to comply with FCC radiation exposure limits.

## CONNECTION



### 1. Install receiver:

- Connect the wireless display receiver to your screen and power it on.

### 2. Plug and mirror:

- Plug the transmitter into the laptop or mobile and wait for mirroring automatically.
- Chargeable via Type-C port.

### 3. Stop/resume mirroring:

- Press the button on the transmitter to stop mirroring or resume mirroring.
- If unable to mirror, please pair your transmitter to the receiver again.

## FCC Warning

This equipment has been tested and found to comply with the limits for a Class B digital device, under part 15 of the FCC Rules. These limits are designed to provide reasonable protection against harmful interference in a residential installation. This equipment generates, uses, and can radiate radio frequency energy and, if not installed and used under the instructions, may cause harmful interference to radio communications. However, there is no guarantee that interference will not occur in a particular installation. If this equipment does cause harmful interference to radio or television reception, which can be determined by turning the equipment off and on, the user is encouraged to try to correct the interference by one or more of the following measures:

- Reorient or relocate the receiving antenna.
- Increase the separation between the equipment and the receiver.
- Connect the equipment to an outlet on a circuit different from that to which the receiver is connected.
- Consult the dealer or an experienced radio/TV technician for help.

**Caution:** Any changes or modifications to this device not explicitly approved by manufacturer could void your authority to operate this equipment.


This device complies with part 15 of the FCC Rules. Operation is subject to the following two conditions:

1. This device may not cause harmful interference,
2. this device must accept any interference received, including interference that may cause undesired operation.

This equipment complies with FCC radiation exposure limits set forth for an uncontrolled environment. This equipment should be installed and operated with a minimum distance of 0cm between the radiator and your body.

**MINIX Technology Limited FLAT/RM 01, 15/F, Chevalier Commercial Center, No.8 Wang Hoi Road, Kowloon Bay, Kowloon, Hong Kong [support@minix.com.hk](mailto:support@minix.com.hk)**

## Documents / Resources

	<p><b><a href="#">MINIX C1 Plus USB-C to HDMI Wireless Display Dongle</a> [pdf] User Guide</b></p> <p>C1 Plus, C1 Plus USB-C to HDMI Wireless Display Dongle, USB-C to HDMI Wireless Display Dongle, HDMI Wireless Display Dongle, Wireless Display Dongle, Display Dongle, Dongle</p>
-------------------------------------------------------------------------------------	----------------------------------------------------------------------------------------------------------------------------------------------------------------------------------------------------------------------------------------------------------------------------------------

## References

- [User Manual](#)

[Manuals+](#), [Privacy Policy](#)

This website is an independent publication and is neither affiliated with nor endorsed by any of the trademark owners. The "Bluetooth®" word mark and logos are registered trademarks owned by Bluetooth SIG, Inc. The "Wi-Fi®" word mark and logos are registered trademarks owned by the Wi-Fi Alliance. Any use of these marks on this website does not imply any affiliation with or endorsement.